

UNITED STATES  
DEPARTMENT OF THE INTERIOR  
GEOLOGICAL SURVEY

30-015-24009

APPLICATION FOR PERMIT TO DRILL, DEEPEN, OR PLUG BACK

1a. TYPE OF WORK

DRILL ☒

DEEPEN ☐

PLUG BACK ☐

b. TYPE OF WELL

OIL WELL ☐

GAS WELL ☒

OTHER

SINGLE ZONE ☒

MULTIPLE ZONE ☐

2. NAME OF OPERATOR

COQUINA OIL CORPORATION

(Ph. 915-682-6271)

3. ADDRESS OF OPERATOR

P. O. Drawer 2960, Midland, Texas 79702

RECEIVED

4. LOCATION OF WELL (Report location clearly and in accordance with any State requirements.)\*

At surface

1980' FSL & 1980' FEL of Sec. 8-23S-31E

DEC 4 1981

At proposed prod. zone

same

14. DISTANCE IN MILES AND DIRECTION FROM NEAREST TOWN OR POST OFFICE\*

26 1/2 air miles east-southeast of Carlsbad, N. M. ARTESIA, OFFICE

15. DISTANCE FROM PROPOSED\*

LOCATION TO NEAREST PROPERTY OR LEASE LINE, FT. (Also to nearest drlg. unit line, if any)

660'

16. NO. OF ACRES IN LEASE

320

17. NO. OF ACRES ASSIGNED TO THIS WELL

320

18. DISTANCE FROM PROPOSED LOCATION\*

TO NEAREST WELL, DRILLING, COMPLETED, OR APPLIED FOR, ON THIS LEASE, FT.

19. PROPOSED DEPTH

15,000' Morrow

20. ROTARY OR CABLE TOOLS

Rotary

21. ELEVATIONS (Show whether DF, RT, GR, etc.)

3330 G. L.

22. APPROX. DATE WORK WILL START\*

January 1, 1982

23. PROPOSED CASING AND CEMENTING PROGRAM

SIZE OF HOLE	SIZE OF CASING	WEIGHT PER FOOT	SETTING DEPTH	QUANTITY OF CEMENT
26 "	20"	94#	600'	Circulate cement to surface
17 1/2 "	13 3/8"	54.5, 61#	4150'	Circulate cement to surface
12 1/4 "	9 5/8"	43.5, 47#	12400'	1000 sacks
8 1/2 "	7 5/8" liner	39#	12000-14300'	Circulate cement behind liner
6 1/2 "	5" liner	11#	13900-15000'	Circulate cement behind liner

After setting and cementing production liner, pay interval will be perforated and stimulated as needed for production.

Attached are: 1. Well Location & Acreage Dedication Plat  
2. Supplemental Drilling Data  
3. Surface Use Plan

Gas is not dedicated.

RECEIVED  
NOV 13 1981

OIL & GAS  
U.S. GEOLOGICAL SURVEY  
ROSWELL, NEW MEXICO

IN ABOVE SPACE DESCRIBE PROPOSED PROGRAM: If proposal is to deepen or plug back, give data on present productive zone and proposed new productive zone. If proposal is to drill or deepen directionally, give pertinent data on subsurface locations and measured and true vertical depths. Give blowout preventer program, if any.

24. SIGNED James A. Knäuf TITLE Agent DATE November 6, 1981  
(This space for Federal or State office use)

PERMIT NO.

APPROVAL DATE 12-3-81

APPROVED BY

TITLE

DATE

CONDITIONS OF APPROVAL, IF ANY:



NEW MEXICO OIL CONSERVATION COMMISSION  
WELL LOCATION AND ACREAGE DEDICATION PLAT

Form O-101  
Supersedes O-128  
Effective 1-1-75

All distances must be from the outer boundaries of the Section

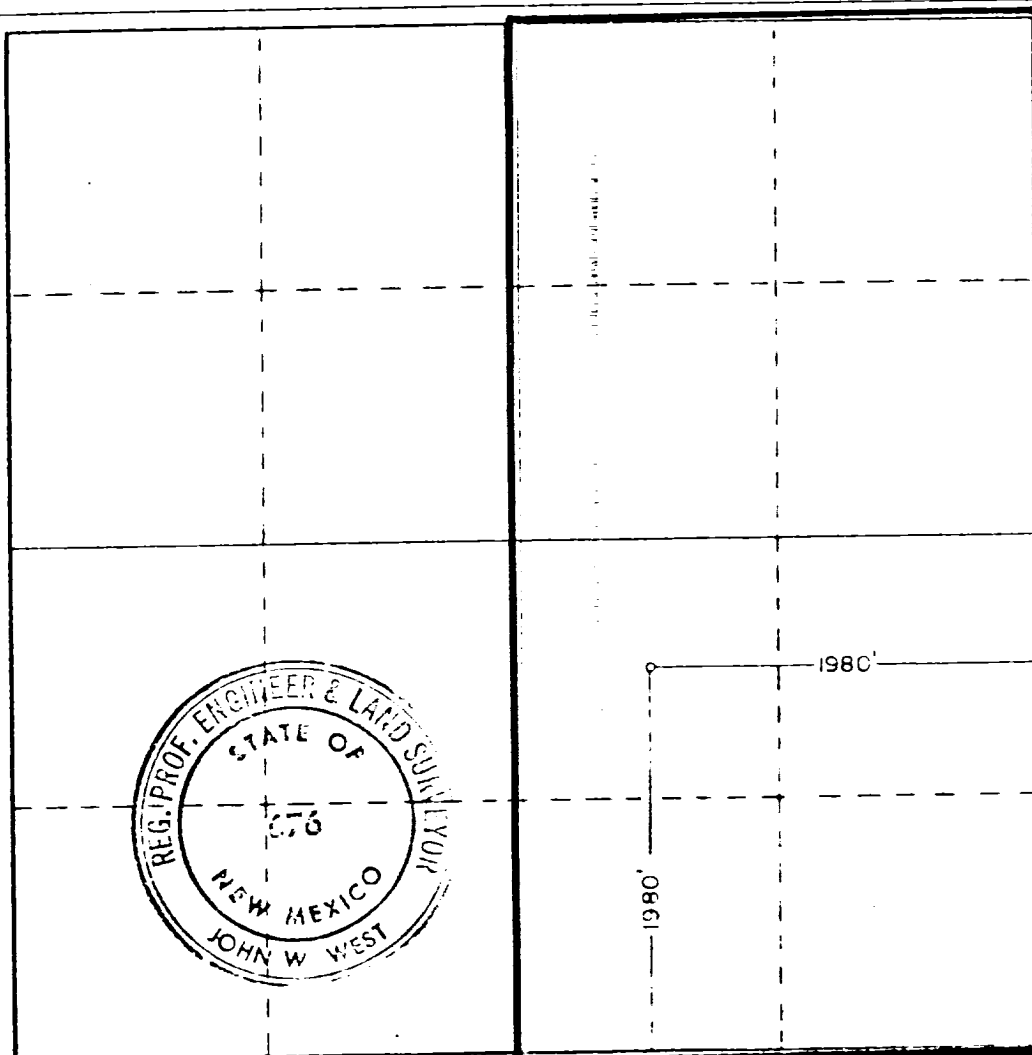
Operator <b>COQUINA OIL CORP.</b>		Lease <b>PURE GOLD "E" <i>Federal</i></b>		Well No. <b>1</b>
Tract Letter <b>J</b>	Section <b>8</b>	Township <b>23 SOUTH</b>	Range <b>31 EAST</b>	County <b>EDDY</b>
Actual Footage Location of Well: <b>1980</b> feet from the <b>SOUTH</b> line and <b>1980</b> feet from the <b>EAST</b> line				
Ground Level Elev. <b>3329.8</b>	Producing Formation <b>Morrow</b>	Foot <b>Undesignated (Los Medanos Morrow)</b>		Dedicated Acreage: <b>320</b>

1. Outline the acreage dedicated to the subject well by colored pencil or hatchure marks on the plat below.
2. If more than one lease is dedicated to the well, outline each and identify the ownership thereof (both as to working interest and royalty). **Federal oil & gas lease NM-45-232 is the only lease involved.**
3. If more than one lease of different ownership is dedicated to the well, have the interests of all owners been consolidated by communitization, unitization, force-pooling, etc?

☐ Yes ☐ No If answer is "yes," type of consolidation \_\_\_\_\_

If answer is "no," list the owners and tract descriptions which have actually been consolidated (Use reverse side of this form if necessary.) \_\_\_\_\_

No allowable will be assigned to the well until all interests have been consolidated (by communitization, unitization, forced-pooling, or otherwise) or until a non-standard unit, eliminating such interests, has been approved by the Commission.



CERTIFICATION

I hereby certify that the information contained herein is true and complete to the best of my knowledge and belief.

*James A. Knauf*  
James A. Knauf

Agent

COQUINA OIL CORPORATION

November 6, 1981

I hereby certify that the well location shown on this plat was plotted from field notes of actual surveys made by me or under my supervision and that the same is true and correct to the best of my knowledge and belief.

Date Surveyed

9 -30- 81

Registered Professional Engineer and Land Surveyor

*John W. West*

Certificate No. **JOHN W. WEST 676**  
**PATRICK A. ROMERO 6865**  
Revised 1-1-75 3230





IN REPLY REFER TO:

UNITED STATES  
DEPARTMENT OF THE INTERIOR  
GEOLOGICAL SURVEY  
~~South Central Region~~  
P.O. Box 26124  
Albuquerque, New Mexico 87125

DEC 03 1981

RECEIVED

DEC 4 1981

O. C. D.  
ARTESIA, OFFICE

Coquina Oil Corporation  
P.O. Drawer 2960  
Midland, Texas 79702

Gentlemen:

Your application for Permit to Drill well No. 1 Pure Gold "E" Federal in the NW 1/4 sec. 8, T. 23 S., R. 31 E., Eddy County, New Mexico, lease NM-45232, to a depth of 15,000 feet to test the Morrow formation in the oil-potash area, is hereby approved as amended by stipulations attached to the application.

One copy of the application is returned herewith. Please notify the District Supervisor, Geological Survey, Roswell, New Mexico, in sufficient time for a representative to witness all cementing operations.

Sincerely yours,

(ORIG. SGD.) MICHAEL F. REITZ

FOR : Gene F. Daniel  
Deputy Conservation Manager  
Oil and Gas

Enclosure

cc:  
NMOCD (2) ✓  
BIM - Carlsbad  
CM, SCR  
DCM - Mining (2)  
Regional Files (2)  
Roswell  
Artesia  
ARF  
RCF

JAGillham:mvd:11/13/81



## SUPPLEMENTAL DRILLING DATA

COQUINA OIL CORPORATION  
WELL #1 PURE GOLD "E" FEDERAL  
NW $\frac{1}{4}$ SE $\frac{1}{4}$  SEC. 8-23S-31E  
EDDY COUNTY, NEW MEXICO

1. SURFACE FORMATION: Sandy soils of Quaternary Age.

2. ESTIMATED GEOLOGIC TOPS:

Lamar	4100'	Wolfcamp	11300'
Delaware	4150'	Strawn	13100'
Cherry Canyon	5050'	Atoka	13350'
Brushy Canyon	6300'	Morrow	13900'
Bone Spring	7950'	Barnett	14900'

3. POSSIBLE WATER AND HYDROCARBON BEARING ZONES:

Water:	Above 300'
Oil:	Cherry Canyon
Gas:	Wolfcamp, Atoka, Morrow

4. PROPOSED CASING PROGRAM:

<u>Size</u>	<u>Interval</u>	<u>Weight</u>	<u>Grade</u>	<u>Joint</u>	<u>Condition</u>
20"	0- 600'	94#	H-40	STC	New
13 3/8"	0- 1700'	54.5#	K-55	STC	New
	1700- 4150'	61#	K-55	STC	New
9 5/8"	0- 9600'	43.5#	S-95	LTC	New
	9600-12400'	47#	S-95	LTC	New
7 5/8"	1200-14300'	39#	S-95	FL4S	New
5"	13900-15000'	18#	N-80	FL4S	New



5. PRESSURE CONTROL EQUIPMENT:

- 600- 4150' An annular-type preventer rated to 1500 psi.
- 4150-12400' An annular-type and two ram-type preventers rated to 5000 psi (see Figure 1).
- 12400-15000' An annular-type and three ram-type preventers rated to 5000 psi (see Figure 2).

6. PROPOSED MUD PROGRAM:

- 0- 600' Spud mud w/paper added to control seepage. Add LCM as necessary if loss of circulation becomes a problem.
- 600- 4150' Drill w/saturated brine water.
- 4150-12400' Drill w/cut brine water, mudding up as hole conditions dictate.
- 12400-14300' Drill w/brine increasing weight as hole conditions dictate.
- 14300-15000' Drill w/brine water.

7. AUXILIARY EQUIPMENT:

- A. Kelly cock in kelly.
- B. Full-opening valve on rig floor in open position at all times ready to be stabbed into drillpipe if necessary.
- C. Rotating drilling head.

8. TESTING, LOGGING AND CORING PROGRAMS:

- A. Possible DST's in Wolfcamp, Atoka, and Morrow.
- B. No coring is planned.
- C. CNL-FDC w/GR and caliper; DIL w/Rxc, 4150' to TD.

9. ABNORMAL PRESSURES, TEMPERATURES OR HYDROGEN SULFIDE GAS: Sufficient material will be kept on location to increase mud weight to handle anticipated pressures. The Wolfcamp and/or Atoka may be abnormally pressured.

10. ANTICIPATED STARTING DATE AND DURATION OF THE OPERATIONS:

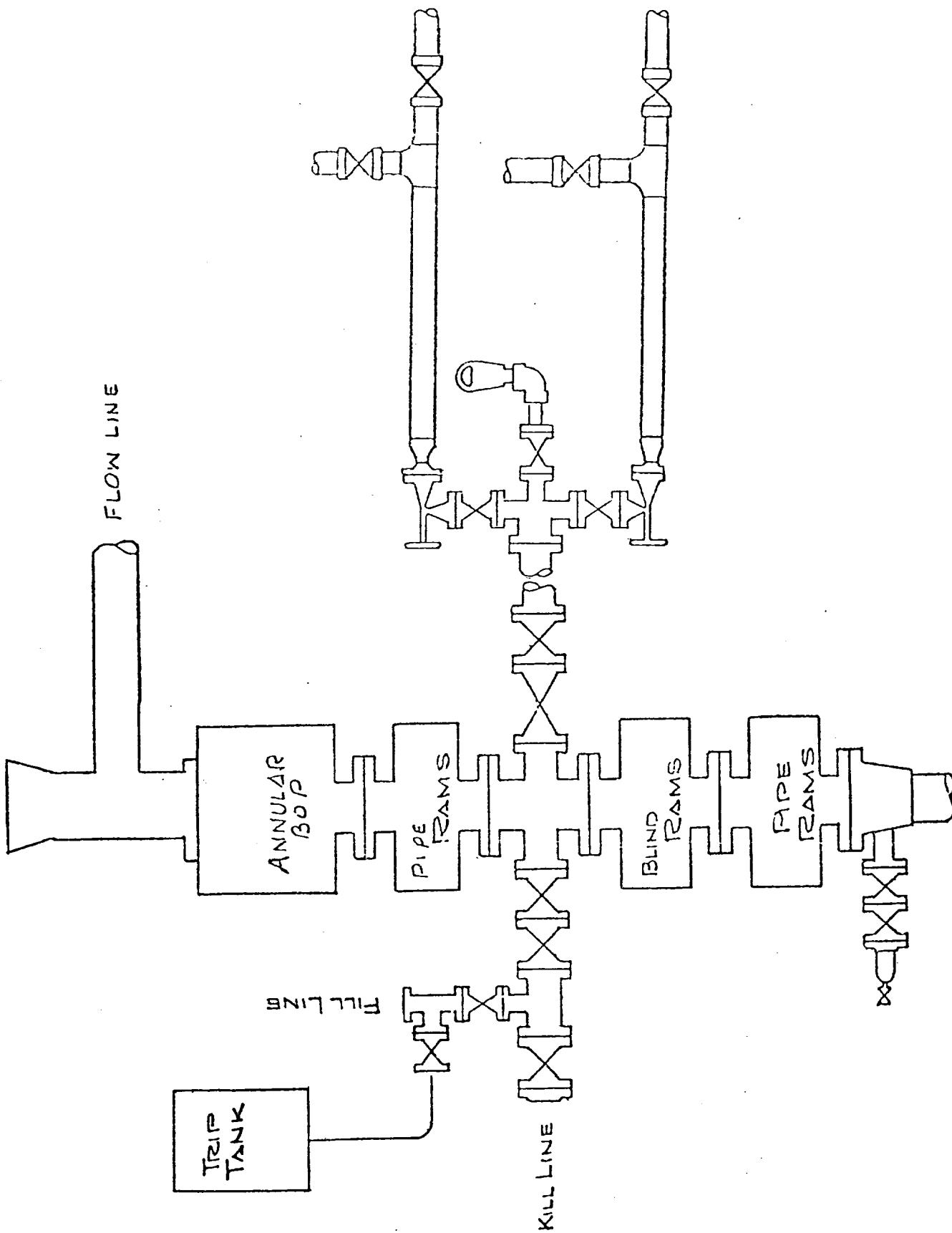
- A. Road and pad construction: January 1, 1982
- B. Spud well: January 15, 1982
- C. Duration of drilling and completion operations should be about 120-150 days.



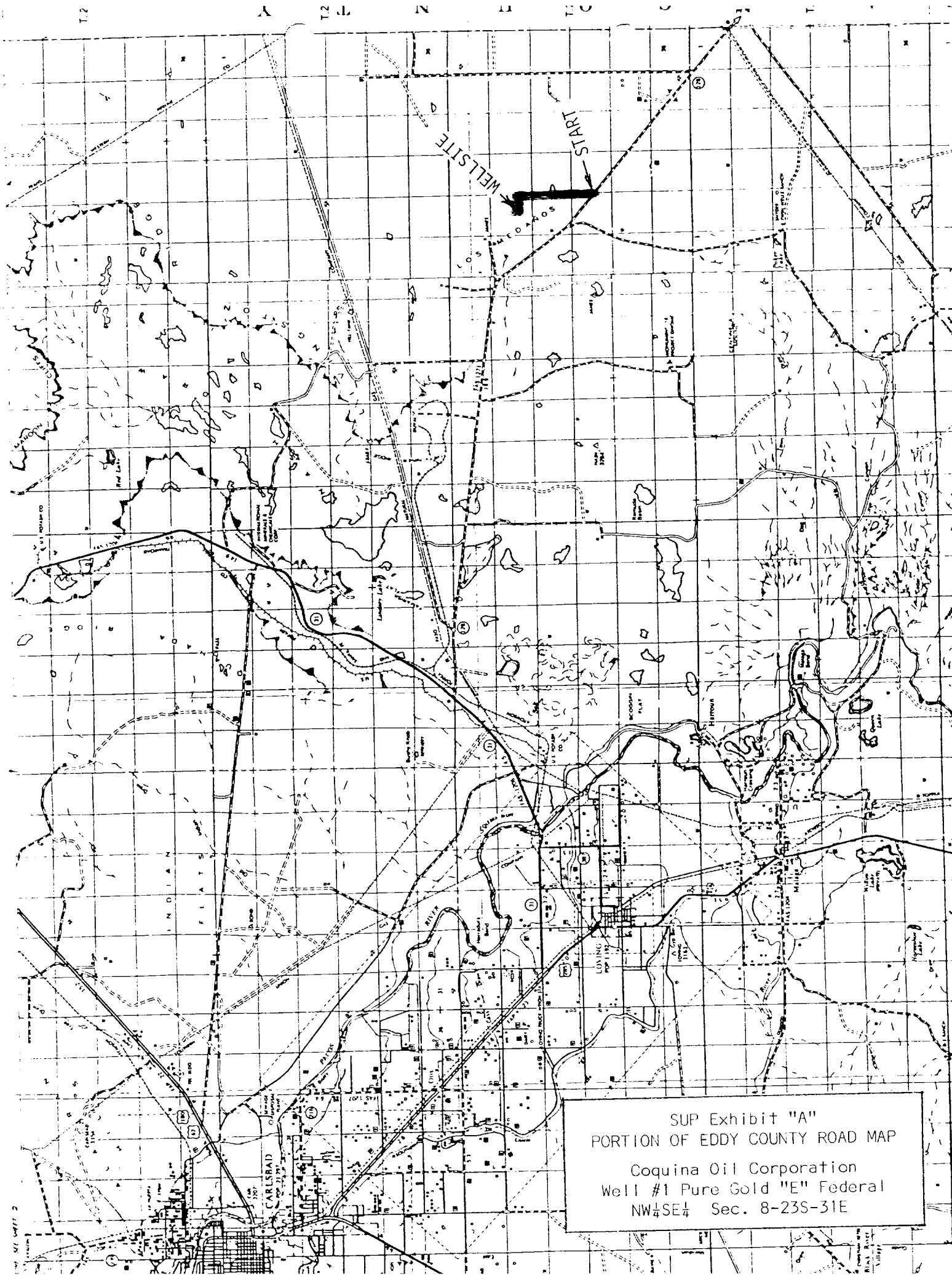




# BLOWOUT PREVENTER SPECIFICATION



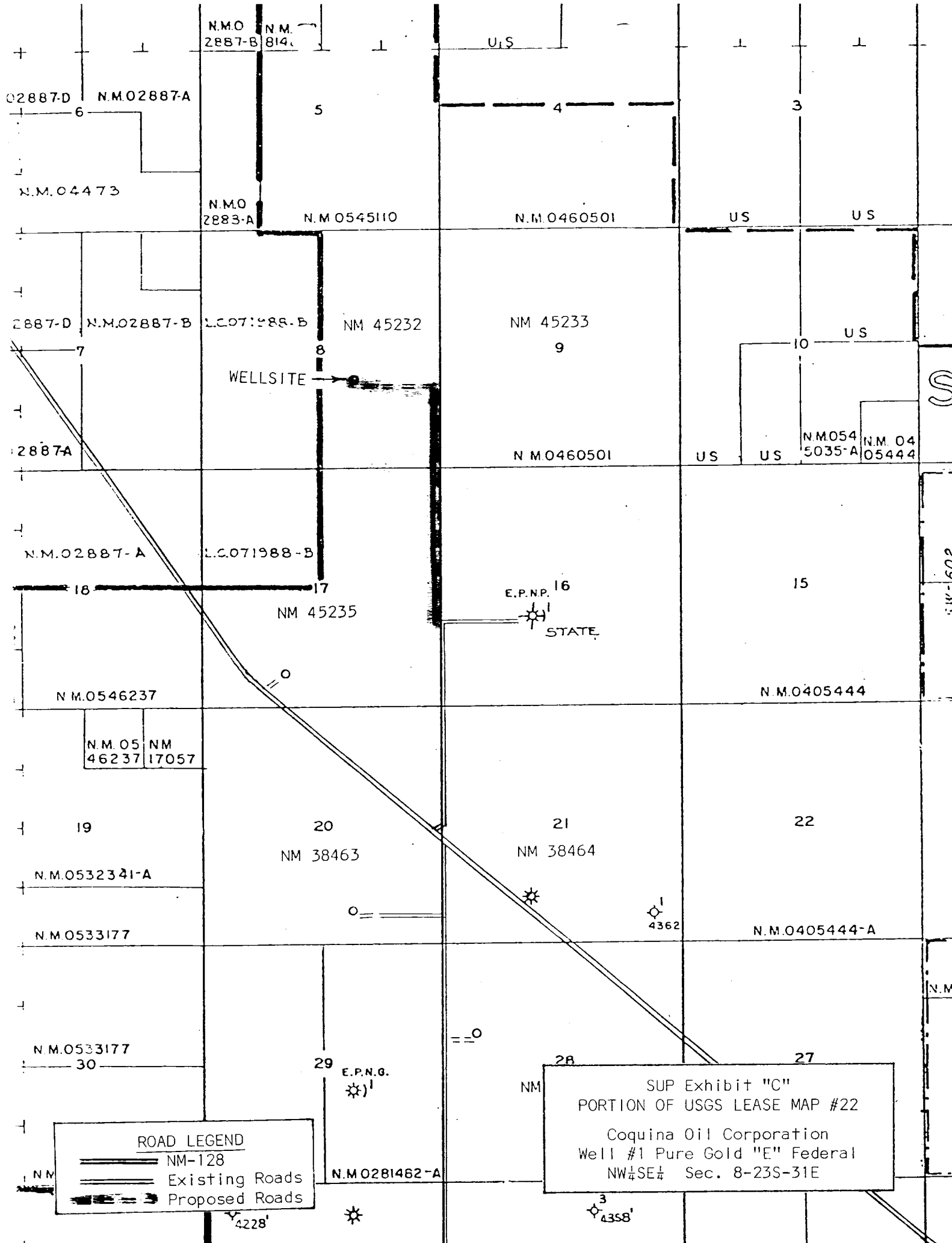




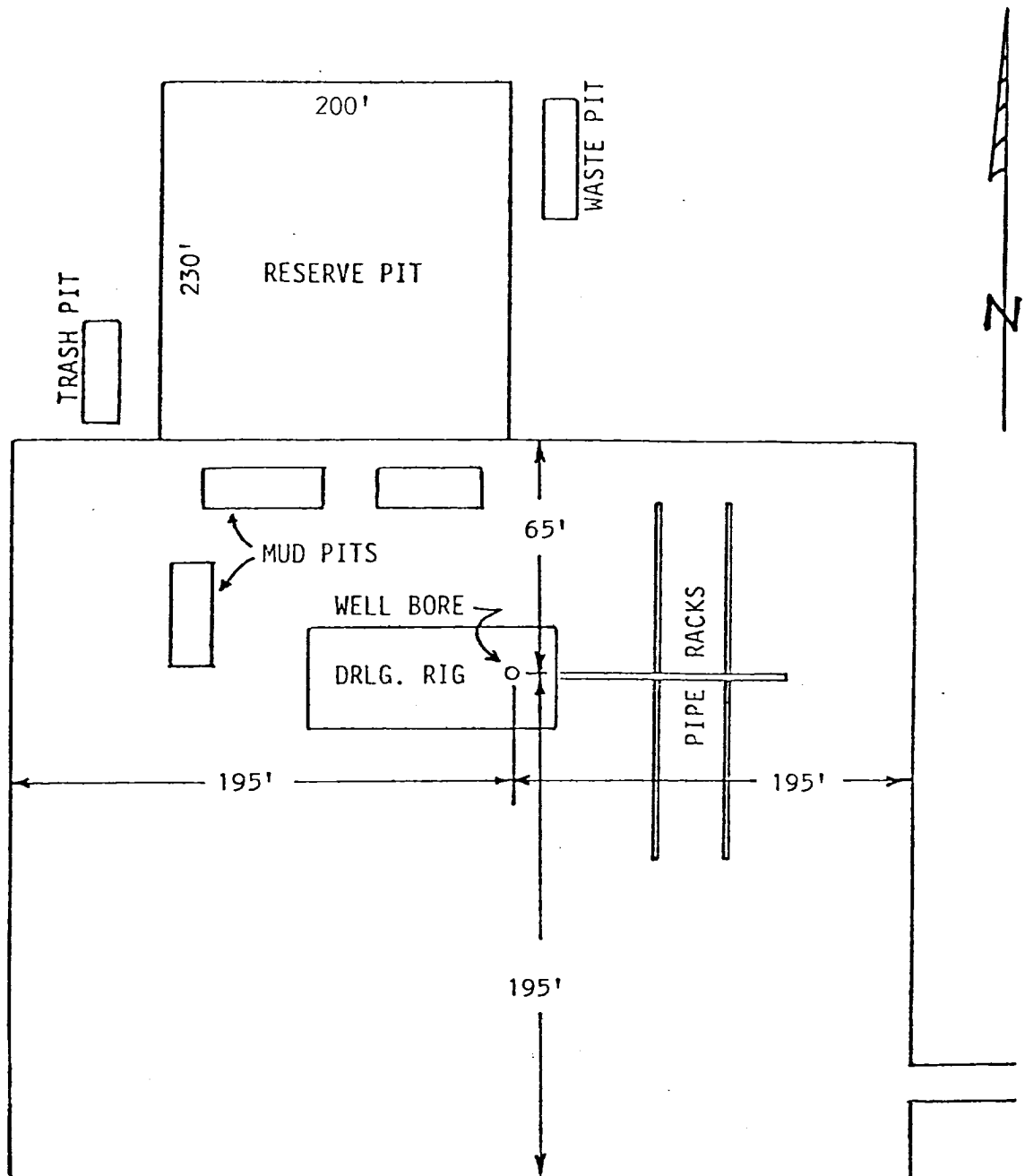
SUP Exhibit "A"  
PORTION OF EDDY COUNTY ROAD MAP  
Coquina Oil Corporation  
Well #1 Pure Gold "E" Federal  
NW 1/4 SE 1/4 Sec. 8-23S-31E

SEE SHEET 2









SUP Exhibit "D"  
 SKETCH OF WELL PAD  
 Coquina Oil Corporation  
 Well #1 Pure Gold "E" Federal  
 NW $\frac{1}{4}$ SE $\frac{1}{4}$  Sec. 8-23S-31E