

UNITED STATES
DEPARTMENT OF THE INTERIOR

GEOLOGICAL SURVEY

APPLICATION FOR PERMIT TO DRILL, DEEPEN, OR PLUG BACK

1a. TYPE OF WORK

DRILL ☒DEEPEN ☐PLUG BACK ☐

b. TYPE OF WELL

OIL
WELL ☐GAS
WELL ☒

OTHER

SINGLE
ZONE ☒MULTIPLE
ZONE ☐

2. NAME OF OPERATOR

Gulf Oil Corporation ✓

3. ADDRESS OF OPERATOR

P. O. Box 670, Hobbs, NM 88240

4. LOCATION OF WELL (Report location clearly and in accordance with any State requirements.)

At surface

1690' FNL & 1650' FEL

At proposed prod. zone

14. DISTANCE IN MILES AND DIRECTION FROM NEAREST TOWN OR POST OFFICE*

4 miles northeast of White City, New Mexico

10. DISTANCE FROM PROPOSED*

LOCATION TO NEAREST
PROPERTY OR LEASE LINE, FT.
(Also to nearest drlg. unit line, if any)

18. DISTANCE FROM PROPOSED LOCATION*

TO NEAREST WELL, DRILLING, COMPLETED,
OR APPLIED FOR, ON THIS LEASE, FT.

16. NO. OF ACRES IN LEASE

1920

19. PROPOSED DEPTH

11,850'

17. NO. OF ACRES ASSIGNED

TO THIS WELL

640

20. ROTARY OR CABLE TOOLS

Rotary

21. ELEVATIONS (Show whether DF, RT, GR, etc.)

3499.7' GL

22. APPROX. DATE WORK WILL START*

January 15, 1982

23.

PROPOSED CASING AND CEMENTING PROGRAM

SIZE OF HOLE	SIZE OF CASING	WEIGHT PER FOOT	SETTING DEPTH	QUANTITY OF CEMENT
13-3/4"	10-3/4"	32.75#&40.5#	1,800'	1100 sx - circ
9 1/2"	7-5/8"	26.4#&29.2#	8,600'	750 sx - circ
6 1/2"	5" Liner	15#	11,850'	300 sx - circ Linetop @ 8400'

Drilling Fluids:

0' - 1,800'
1,800' - 11,850'

FW Spud Mud

Salt Water Polymer; wt & viscosity
as hole dictates, filtration control
as necessary

See Attached BOP Drawing #4

Gas Is Dedicated

IN ABOVE SPACE DESCRIBE PROPOSED PROGRAM: If proposal is to deepen or plug back, give data on present productive zone and proposed new productive zone. If proposal is to drill or deepen directionally, give pertinent data on subsurface locations and measured and true vertical depths. Give blowout preventer program, if any.

24.

SIGNED

RD Pite for

TITLE

Area Production Manager

DATE

12-3-81

(This space for Federal or State office use)

PERMIT NO.

APPROVAL DATE

APPROVED BY

TITLE

DATE

CONDITIONS OF APPROVAL, IF ANY:

APPROVED

JAN 5 1982

JAMES A. GILLHAM See Instructions On Reverse Side
DISTRICT SUPERVISOR

UNITED STATES
DEPARTMENT OF THE INTERIOR
GEOLOGICAL SURVEY

SUBMIT IN TRIPLICATE (Other instructions on reverse side)
Artesia, NM 88210
Budget Bureau No. 42-R1424.

IN OIL CONS. COMMISSION
Drawer DD

SUNDRY NOTICES AND REPORTS ON WELLS

(Do not use this form for proposals to drill or to deepen or plug back to a different reservoir. Use "APPLICATION FOR PERMIT—" for such proposals.)

1. OIL WELL <input type="checkbox"/> GAS WELL <input checked="" type="checkbox"/> OTHER		5. LEASE DESIGNATION AND SERIAL NO. LC- 065347
2. NAME OF OPERATOR Gulf Oil Corporation		6. IF INDIAN, ALLOTTEE OR TRIBE NAME
3. ADDRESS OF OPERATOR P. O. Box 670, Hobbs, NM 88240		7. UNIT AGREEMENT NAME
4. LOCATION OF WELL (Report location clearly and in accordance with any State requirements. See also space 17 below.) At surface ** 1690' FNL & 1330' FEL		8. FARM OR LEASE NAME Estill "AD" Federal
14. PERMIT NO.		9. WELL NO. 2
15. ELEVATIONS (Show whether DF, RT, GR, etc.) ** 3469.7' GL		10. FIELD AND POOL, OR WILDCAT
16. Check Appropriate Box To Indicate Nature of Notice, Report, or Other Data		11. SEC., T., R., M., OR BLK. AND SURVEY OR AREA Sec 19-T24S-R26E
		12. COUNTY OR PARISH Eddy
		13. STATE NM

RECEIVED

JAN 6 1982

O. C. D.
ARTESIA, OFFICE

18. Check Appropriate Box To Indicate Nature of Notice, Report, or Other Data

NOTICE OF INTENTION TO:		SUBSEQUENT REPORT OF:	
TEST WATER SHUT-OFF <input type="checkbox"/>	PULL OR ALTER CASING <input type="checkbox"/>	WATER SHUT-OFF <input type="checkbox"/>	REPAIRING WELL <input type="checkbox"/>
FRACTURE TREAT <input type="checkbox"/>	MULTIPLE COMPLETE <input type="checkbox"/>	FRACTURE TREATMENT <input type="checkbox"/>	ALTERING CASING <input type="checkbox"/>
SHOOT OR ACIDIZE <input type="checkbox"/>	ABANDON* <input type="checkbox"/>	SHOOTING OR ACIDIZING <input type="checkbox"/>	ABANDONMENT* <input type="checkbox"/>
REPAIR WELL <input type="checkbox"/>	CHANGE PLANS <input type="checkbox"/>	(Other) <input type="checkbox"/>	

(NOTE: Report results of multiple completion on Well Completion or Recompletion Report and Log form.)

17. DESCRIBE PROPOSED OR COMPLETED OPERATIONS (Clearly state all pertinent details, and give pertinent dates, including estimated date of starting any proposed work. If well is directionally drilled, give subsurface locations and measured and true vertical depths for all markers and zones pertinent to this work.)

Original Application for Permit to Drill showed location as 1650' FNL & 1650' FEL with elevation of 3499.7' GL.

** Location should be changed to show 1690' FNL & 1330' FEL with elevation of 3469.7' GL

RECEIVED
DEC 23 1981

OIL & GAS
U.S. GEOLOGICAL SURVEY
ROSWell, NEW MEXICO

18. I hereby certify that the foregoing is true and correct

SIGNED <u>R. E. Pite</u>	TITLE <u>Area Engineer</u>	DATE <u>12-22-81</u>
APPROVED		
APPROVED BY <u>JAMES A. GILLHAM</u>	TITLE <u>Area Engineer</u>	DATE <u>JAN 5 1982</u>
CONDITIONS OF APPROVAL, IF ANY:		

James A. Gillham
Area Engineer
Reverse Side

MEXICO OIL CONSERVATION COMMISSION
WELL LOCATION AND ACREAGE DEDICATION PLAT

Form C-102
Supersedes C-128
Effective 1-1-65

All distances must be from the outer boundaries of the Section.

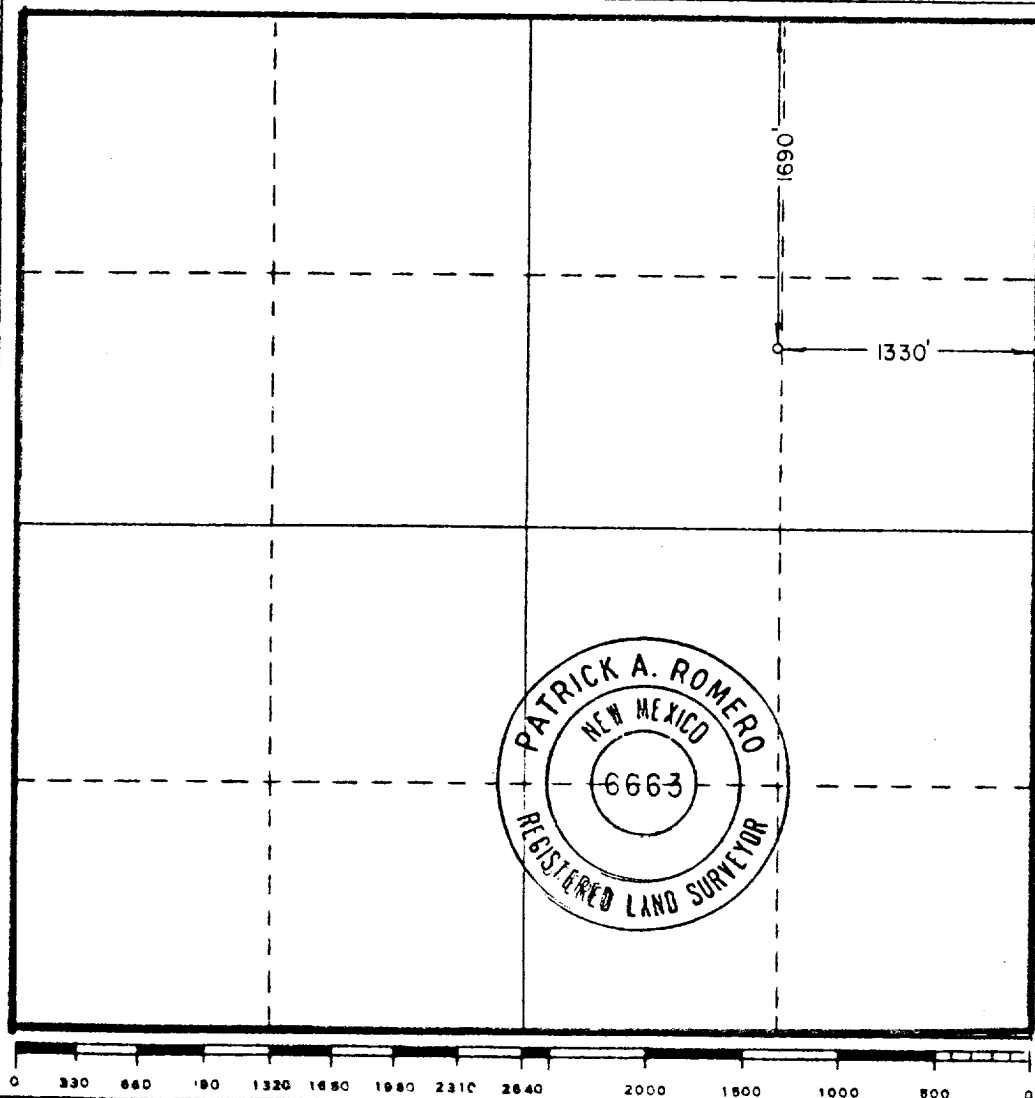
Operator Gulf Oil Corporation		Lease Estill A. D. Federal		Well No. 2
Unit Letter G	Section 19	Township 24S	Range 26E	County Eddy County
Actual Footage Location of Well: 1690 feet from the North line and 1330 feet from the East line				
Ground Level Elev. 3469.7	Producing Formation Morrow	Pool White City Penn	Dedicated Acreage: 640 Acres	

1. Outline the acreage dedicated to the subject well by colored pencil or hachure marks on the plat below.
2. If more than one lease is dedicated to the well, outline each and identify the ownership thereof (both as to working interest and royalty).
3. If more than one lease of different ownership is dedicated to the well, have the interests of all owners been consolidated by communitization, unitization, force-pooling, etc?

☐ Yes ☐ No If answer is "yes," type of consolidation _____

If answer is "no," list the owners and tract descriptions which have actually been consolidated. (Use reverse side of this form if necessary.) _____

No allowable will be assigned to the well until all interests have been consolidated (by communitization, unitization, forced-pooling, or otherwise) or until a non-standard unit, eliminating such interests, has been approved by the Commission.



CERTIFICATION	
I hereby certify that the information contained herein is true and complete to the best of my knowledge and belief. <i>R. D. Pitre</i>	
Name	R. D. Pitre
Position	Area Engineer
Company	Gulf Oil Corporation
Date	12-22-81
I hereby certify that the well location shown on this plat was plotted from field notes of actual surveys made by me or under my supervision, and that the same is true and correct to the best of my knowledge and belief. 12/18/81	
Date Surveyed	
Registered Professional Engineer and/or Land Surveyor <i>Patrick A. Romero</i>	
Certificate No.	JOHN W. WEST 676 PATRICK A. ROMERO 6663 Ronald J. Eidson 3239

**MEXICO OIL CONSERVATION COMMISSION
WELL LOCATION AND ACREAGE DEDICATION PLAT**

Form C-102
Supersedes C-128
Effective 1-1-65

All distances must be from the outer boundaries of the Section

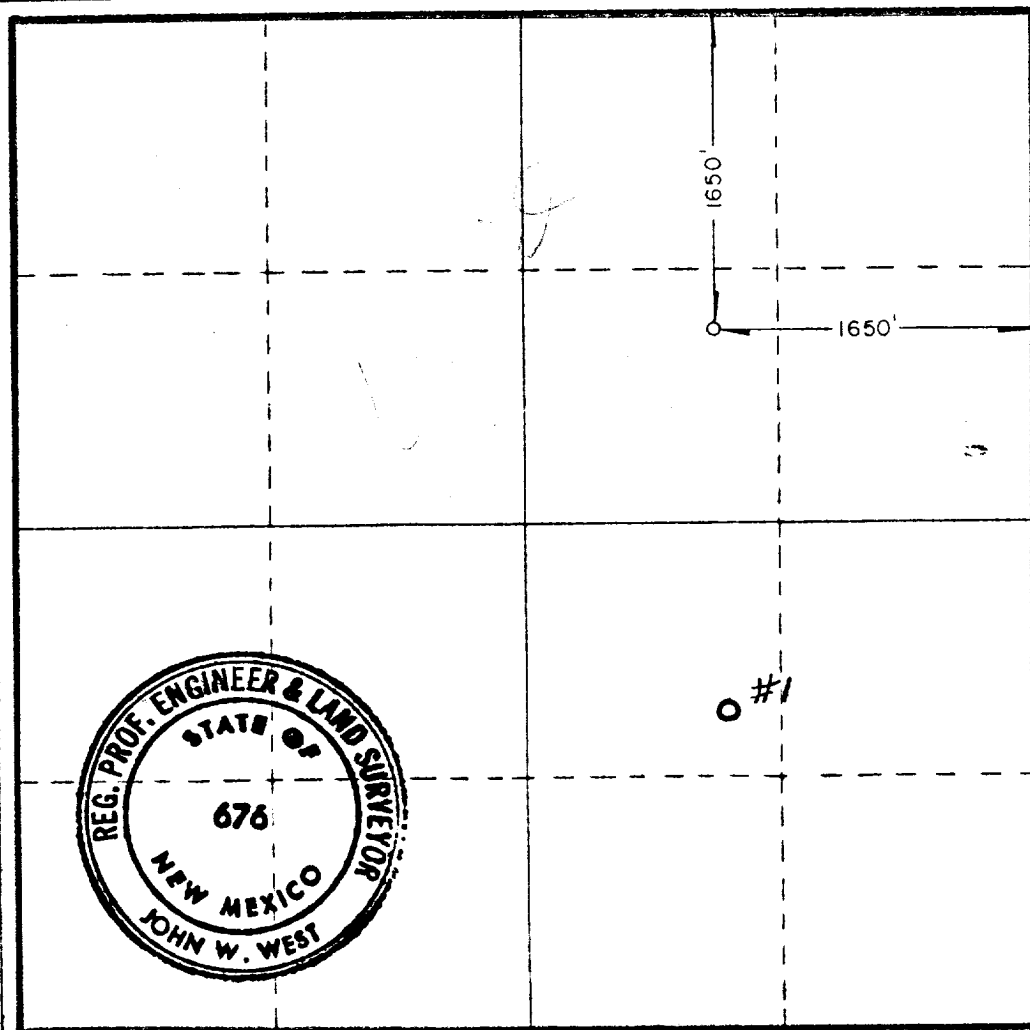
Operator Gulf Oil Corporation			Lease Estill A. D. Federal		Well No. 2
Unit Letter G	Section 19	Township 24 South	Range 26 East	County Eddy	
Actual Footage Location of Well: 1650 feet from the north line and 1650 feet from the east line					
Ground Level Elev. 3499.7'	Producing Formation Morrow		Pool White City Penn		Dedicated Acreage: 640 Acres

1. Outline the acreage dedicated to the subject well by colored pencil or hatchure marks on the plat below.
2. If more than one lease is dedicated to the well, outline each and identify the ownership thereof (both as to working interest and royalty).
3. If more than one lease of different ownership is dedicated to the well, have the interests of all owners been consolidated by communitization, unitization, force-pooling, etc?

☐ Yes ☐ No If answer is "yes," type of consolidation _____

If answer is "no," list the owners and tract descriptions which have actually been consolidated. (Use reverse side of this form if necessary.) _____

No allowable will be assigned to the well until all interests have been consolidated (by communitization, unitization, forced-pooling, or otherwise) or until a non-standard unit, eliminating such interests, has been approved by the Commission.



CERTIFICATION

I hereby certify that the information contained herein is true and complete to the best of my knowledge and belief.

R. C. Anderson for
Name
R. C. Anderson

Position
Area Production Manager

Company
Gulf Oil Corporation

Date
12-3-81

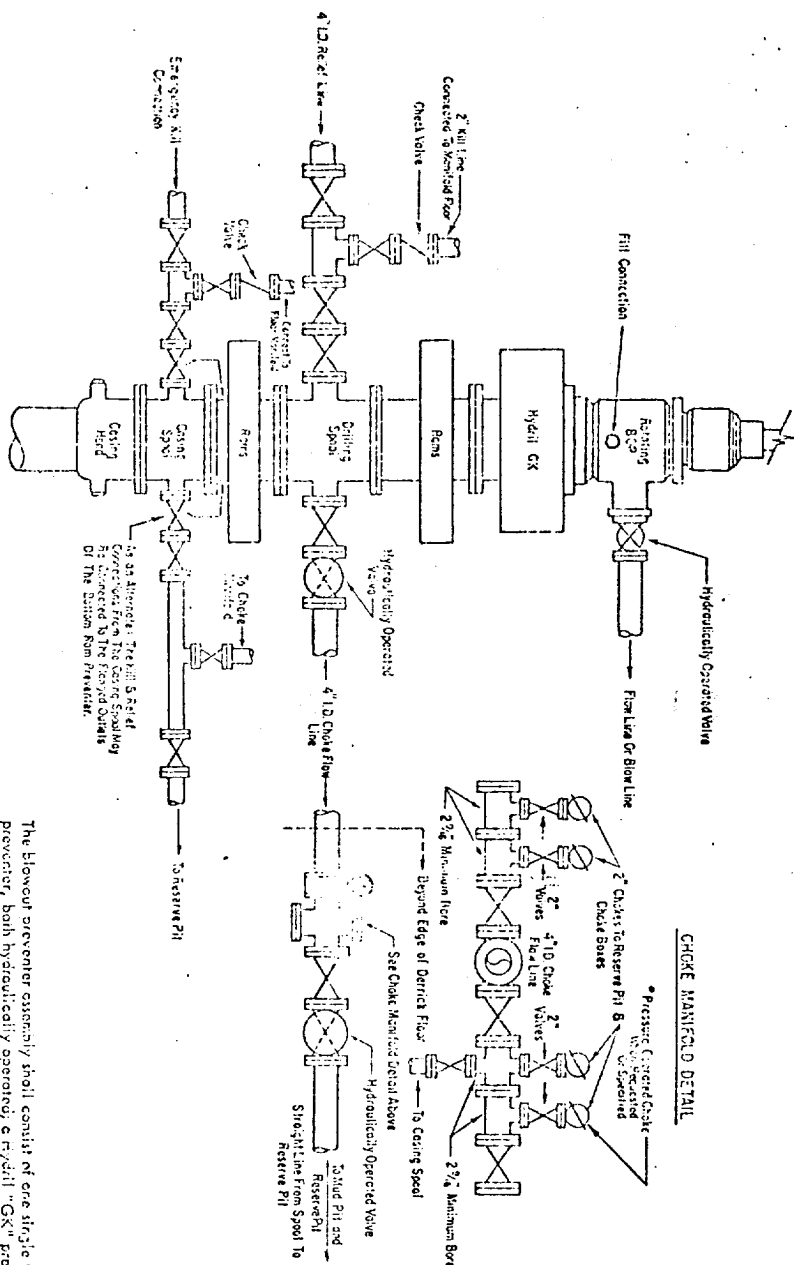
I hereby certify that the well location shown on this plat was plotted from field notes of actual surveys made by me or under my supervision, and that the same is true and correct to the best of my knowledge and belief.

Date Surveyed
11-16-81

Registered Professional Engineer and/or Land Surveyor

John W. West
Certificate No. **JOHN W. WEST 676**
PATRICK A. ROMERO 6663
Ronald J. Eidson 3239

0 330 660 990 1320 1650 1980 2310 2640 2970 3300 3630 3960 4290 4620 4950 5280 5610 5940 6270 6600



ADDITIONS-DELETIONS-CHANGES
 SPECIFY

5000 PSI WORKING PRESSURE
 BLOWOUT PREVENTER HOOK-UP

The blowout preventer assembly shall consist of one single type blind ram preventer and one single type pipe ram preventer, both hydraulically operated, a hybrid "GX" preventer, a ram preventer, valves, chokes and connections, as illustrated. If a tapered drill string is used, a ram preventer must be provided for each size of drill pipe. Coating and tubing rams to fit the preventers are to be available as needed. If correct in size, the flanged outlets of the ram preventer may be used for connecting to the 4-inch I.D. choke flow line and 4-inch I.D. relief line, except when air or gas drilling. All preventer connections are to be open-face flanged.

Minimum operating equipment for the preventers and hydraulically operated valves shall be as follows: (1) Multiple pumps, driven by a continuous source of power, capable of fluid charging the total accumulator volume from the nitrogen precharge pressure to its rated pressure within _____ minutes. Also, the pumps are to be connected to the accumulator precharge pressure to its rated pressure to receive the aforementioned fluid charge. With the remaining accumulator pressure shall be not less than 1000 PSI with the remaining accumulator fluid volume at least _____ percent of the original. (3) When requested, an additional source of power, remote and equivalent, is to be available to operate the above pumps or there shall be additional pumps operated by separate power and equal in performance capabilities.

The electric manifold and remote closing manifold shall have a separate control for each pressure-operated device. Controls are to be labeled, with control handles indicating open and closed positions. A pressure-reducing and regulator must be provided for operating the Hybrid preventer. When requested, a second pressure reducer shall be available to limit operating fluid pressures to ram preventers. Gulf Legion No. 28 hydraulic oil, an equivalent or better, is to be used as the fluid to operate the hydraulic equipment.

The choke manifold, choke flow line, relief line, and choke lines are to be supported by metal stands and adequately anchored. The choke flow line, relief line, and choke line shall be constructed as straight as possible and without sharp bends. Easy and safe access is to be maintained to the choke manifold. If deemed necessary, walkways and stairways shall be erected in and around the choke manifold. All valves are to be tested for operation in the presence of oil, gas, and drilling fluid. The choke flow line valves and relief line valves connected to the drilling spool and all ram type preventers must be equipped with stem extensions, universal joints if needed, and hand wheels which are to extend beyond the edge of the derrick substructure. All other valves are to be equipped with handles.

Gulf Oil Exploration and Production Company

R. C. Anderson
PRODUCTION MANAGER, HOBBS AREA

December 3, 1981

P. O. Box 670
Hobbs, NM 88240

Re: Application for Permit to Drill
Estill "AD" Federal Well #2,
Eddy County, New Mexico

U. S. Geological Survey
P. O. Drawer 1857
Roswell, New Mexico 88201

Gentlemen:

We are submitting the information requested in NTL-6 which should accompany application for permit to drill.

Well: Estill "AD" Federal Well No. 2

- (1) Location: 1650' FNL & 1650' FEL, Section 19-T24S-R26E, Eddy County, New Mexico
- (2) Elevation of Unprepared Ground: 3499.7' GL
- (3) Geologic Name of Surface Formation: Quarternary Alluvium
- (4) Type Drilling Tools: Rotary
- (5) Proposed Drilling Depth: 11,850'
- (6) Estimated Tops of Geologic Markers: Delaware 1950', Bone Springs 5220', Wolfcamp 8360', Strawn 10,270', Atoka 10,450', Morrow 10,840', Barnett 11,800'
- (7) Estimated Depths at which Anticipated Gas or Oil-Bearing Formations Expected: Wolfcamp 9900', Strawn 10,270', Atoka 10,450', Morrow 10,840'
- (8) Casing Program and Setting Depths:

	<u>Size</u>	<u>Weight</u>	<u>Grade</u>	<u>Setting Depth</u>
Surface	10-3/4"	32.75#&40.5#	K-55	1,800'
Intermediate	7-5/8"	26.4#&29.2#	S-95;N-80	8,600'
Production	5" Liner	15#	X-Line	11,850' (Top@8400')



A DIVISION OF GULF OIL CORPORATION

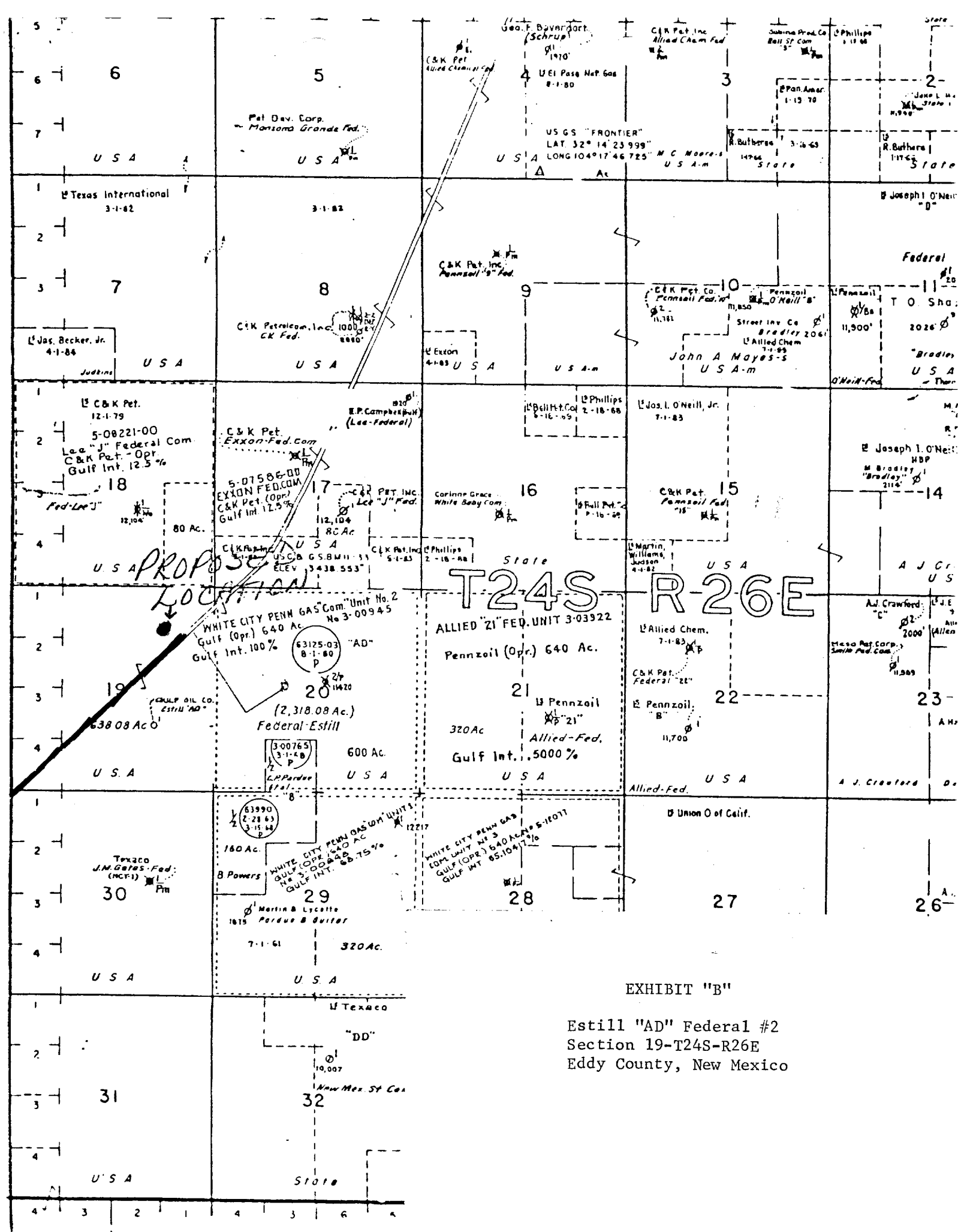
- (9) Casing Setting Depth and Cementing Program:
- (a) Surface casing will be set at 1,800' and cemented with 1100 sacks Class "C" cement.
 - (b) Intermediate casing will be set at 8,600' and cemented with 750 sacks Class "C" cement.
 - (c) Production liner is to be set at 11,850' and cemented with 300 sacks Class "H" cement.
- (10) Pressure Control Equipment: Minimum specifications for pressure control equipment can be seen on attached Drawing No. 4 of Gulf's blowout preventer hook-up for 5000 psi working pressure.
- (11) Circulating Media:
- | | |
|------------------|---|
| 0' - 1,800' | Fresh Water Spud Mud |
| 1,800' - 11,850' | Salt Water Polymer; weight and viscosity sufficient for adequate hole control, filtration control through desired pay zones |
- (12) Testing, Logging and Coring Programs:
- (a) Formation testing may be done at any depth where samples, drilling rate, or log information indicate a possible show of oil or gas.
 - (b) Open hole logs will be run prior to running casing at total depth.
 - (c) No cores are planned.
- (13) Abnormal Pressure or Temperature and Hydrogen Sulfide Gas: Abnormal pressures or temperatures and hydrogen sulfide gas are not anticipated but blow out prevention equipment will be installed as in attached drawing.
- (14) Anticipated Starting Date: Drilling operations should begin January 15, 1982.
- (15) Other Facets of the Proposed Operation: None

Yours very truly,

R. C. Anderson for

R. C. Anderson
Area Production Manager

GAB/jr





STATE OF NEW MEXICO
ENERGY AND MINERALS DEPARTMENT

OIL CONSERVATION DIVISION
ARTESIA DISTRICT OFFICE

January 7, 1982

BRUCE KING
GOVERNOR

LARRY KEHOE
SECRETARY

P.O. DRAWER DD
ARTESIA, NEW MEXICO 88210
(505) 746-4861

Gulf Oil Corp.
P.O. Box 670
Hobbs, New Mexico 88240

Re: Estill "AD" Federal
#2-G-19-24-26
Eddy County, New Mexico

Gentlemen:

We hereby acknowledge receipt of the application for permit to drill the subject well approved by the USGS on January 5, 1982.

Said well is an unorthodox location and this office has no record of Division Approval of same.

Said unorthodox location must be approved by the Oil Conservation Division prior to producing the well.

If you have any questions concerning this matter, please feel free to call upon me.

Sincerely,

A handwritten signature in cursive script, reading "W.A. Gressett".

W.A. Gressett
Supervisor, District II

WAG:mm

Gulf Oil Exploration and Production Company

R. C. Anderson
PRODUCTION MANAGER, HOBBS AREA

January 5, 1982

P. O. Box 670
Hobbs, NM 88240

Re: Application for Non-Standard Location
Estill AD Federal #2
1690' FNL & 1330' FEL of Section 19-
T24S-R26E, Eddy County, New Mexico

RECEIVED

JAN 11 1982

O. C. D.
ARTESIA, OFFICE

Mr. R. L. Stamets
Technical Support Chief
State of New Mexico
Energy & Minerals Department
Oil Conservation Division
P. O. Box 2088
Santa Fe, New Mexico 87501

Dear Sir:

Gulf Oil Corporation requests your administrative approval for the non-standard location described above for our Estill AD Federal #2, a proposed 11,850' development well in the White City Penn Pool. In support of this application, the following information is submitted herewith:

1. A plat showing the location of the well
2. Two plats fully identifying the topography of the area
(See Exhibits A & B)
3. List of offset operators

This application is necessary pursuant to moving the location southeasterly, at the requests of the USGS and BLM, because of topographical conditions. The offset operators have been furnished copies of this application by certified mail. If additional information is required, please advise.

Yours very truly,

R. C. Anderson
R. C. ANDERSON

DAH/skj
Att'd



A DIVISION OF GULF OIL CORPORATION