

| | | |
|------------------------|---|---|
| NO. OF COPIES RECEIVED | | |
| DISTRIBUTION | | |
| SANTA FE | ✓ | |
| FILE | ✓ | ✓ |
| U.S.G.S. | ✓ | |
| LAND OFFICE | ✓ | |
| OPERATOR | ✓ | |

RECEIVED
NEW MEXICO OIL CONSERVATION COMMISSION

NOV 8 1982

O. C. D.
ARTESIA OFFICE

Form C-101 30-015-24313
Revised 1-4-65

5A. Indicate Type of Lease
STATE FEE

5. State Oil & Gas Lease No.
LG-3965

APPLICATION FOR PERMIT TO DRILL, DEEPEN, OR PLUG BACK

1a. Type of Work
b. Type of Well DRILL DEEPEN PLUG BACK
OIL WELL GAS WELL OTHER SINGLE ZONE MULTIPLE ZONE

2. Name of Operator
Exxon Corporation ✓

3. Address of Operator
P. O. Box 1600, Midland, TX 79702

4. Location of Well UNIT LETTER P LOCATED 660 FEET FROM THE South LINE
AND 660 FEET FROM THE East LINE OF SEC. 24 TWP. 16S RGE. 28E NMPM

7. Unit Agreement Name

8. Farm or Lease Name
New Mexico DG State

9. Well No.
1

10. Field and Pool, or Wildcat
Undesignated East Red Lake-Queen-Grayburg

12. County
Eddy

19. Proposed Depth
2400'

19A. Formation
Penrose & Premier

20. Rotary or C.T.
Rotary

21. Elevations (Show whether DF, RT, etc.)
Ungraded ground 3583'

21A. Kind & Status Plug. Bond
Blanket

21B. Drilling Contractor
Unknown

22. Approx. Date Work will start
Unknown

23. PROPOSED CASING AND CEMENT PROGRAM

| SIZE OF HOLE | SIZE OF CASING | WEIGHT PER FOOT | SETTING DEPTH | SACKS OF CEMENT | EST. TOP |
|--------------|----------------|-----------------|---------------|-----------------|----------|
| 12 1/4" | 8 5/8" | 24# | 350' | 225 | Surface |
| 7 7/8" | 5 1/2" | 14# | 2300' | 650 | 500'± |

Mud Program:

| Depth | Type | Weight |
|---------|---------|---------|
| 0-350' | FW Spud | 8.4-8.6 |
| 350- TD | CBW | 9.6-9.8 |

Diagrammatic sketch and specifications of BOP are attached.

Gas is not dedicated to a purchaser.

APPROVAL VALID FOR 180 DAYS
PERMIT EXPIRES 6/1/83
UNLESS DRILLING UNDERWAY

IN ABOVE SPACE DESCRIBE PROPOSED PROGRAM; IF PROPOSAL IS TO DEEPEN OR PLUG BACK, GIVE DATA ON PRESENT PRODUCTIVE ZONE AND PROPOSED NEW PRODUCTIVE ZONE. GIVE BLOWOUT PREVENTER PROGRAM, IF ANY.

I hereby certify that the information above is true and complete to the best of my knowledge and belief.

Signed Melva Knippling Title Unit Head Date November 5, 1982

(This space for State Use)

APPROVED BY [Signature] TITLE _____ DATE _____

CONDITIONS OF APPROVAL, IF ANY:

Exxon Lse. No. _____

NEW MEXICO OIL CONSERVATION COMMISSION

Form C-102
Supersedes C-128
Effective 1-1-65

State Lse. No. _____

WELL LOCATION AND ACREAGE DEDICATION PLAT

Federal Lse. No. _____

All distances must be from the outer boundaries of the Section.

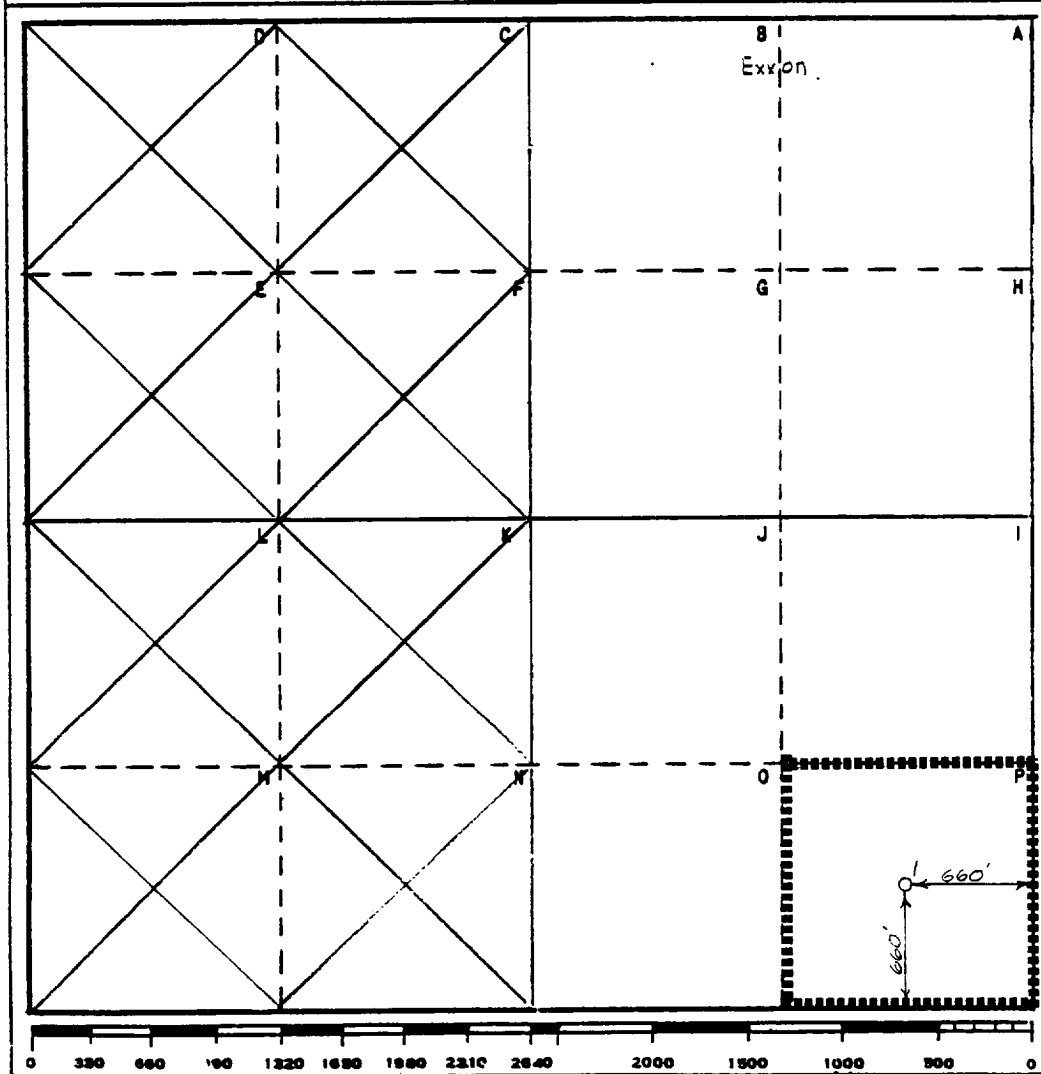
| | | | | | |
|--|---------------------------------------|---------------------------------------|---|-----------------------|---------------------------------------|
| Operator Exxon Corporation | | Lease New Mexico "DG" State | | | Well No. 1 |
| Unit Letter P | Section 24 | Township 16 S | Range 28 E | County Eddy | |
| Actual Footage Location of Well: 660 feet from the South line and 660 feet from the East line | | | | | |
| Ground Level Elev: 3503 | Producing Formation Penrose | | Pool Undes. East Redlake - Queen - Grayburg | | Dedicated Acreage: 40 Acres |

1. Outline the acreage dedicated to the subject well by colored pencil or hachure marks on the plat below.
2. If more than one lease is dedicated to the well, outline each and identify the ownership thereof (both as to working interest and royalty).
3. If more than one lease of different ownership is dedicated to the well, have the interests of all owners been consolidated by communitization, unitization, force-pooling, etc?

Yes No If answer is "yes," type of consolidation _____

If answer is "no," list the owners and tract descriptions which have actually been consolidated. (Use reverse side of this form if necessary.) _____

No allowable will be assigned to the well until all interests have been consolidated (by communitization, unitization, forced-pooling, or otherwise) or until a non-standard unit, eliminating such interests, has been approved by the Commission.



CERTIFICATION

I hereby certify that the information contained herein is true and complete to the best of my knowledge and belief.

Name
Melba Knippling

Position
UNIT HEAD

Company **Exxon Corporation**
Box 1600 Midland, Texas

Date
11-4-82

I hereby certify that the well location shown on this plat was plotted from field notes of actual surveys made by me or under my supervision, and that the same is true and correct to the best of my knowledge and belief.

Date Surveyed
10-28-82

Registered Professional Engineer and/or Land Surveyor
W. J. Richmond

Certificate No.
6157

16.5 Miles **NE** of **Artesia**, New Mexico

C.E. Sec. File No. **WA-792B-A**

Exxon Lse. No. _____

NEW MEXICO OIL CONSERVATION COMMISSION

Form C-102
Supersedes C-128
Effective 1-1-65

State Lse. No. _____

WELL LOCATION AND ACREAGE DEDICATION PLAT

Federal Lse. No. _____

All distances must be from the outer boundaries of the Section.

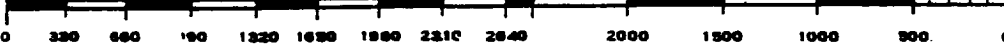
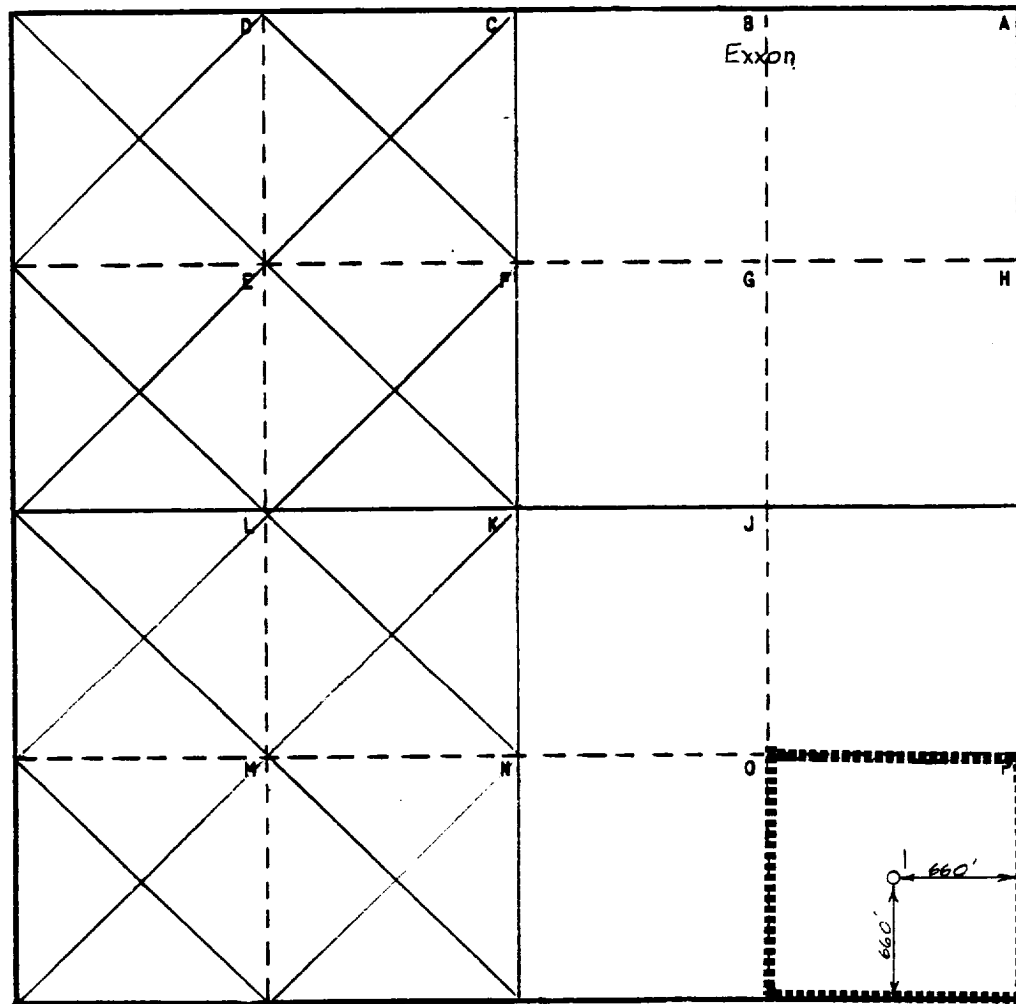
| | | | | | |
|--|---------------------------------------|---|---------------------------------------|-----------------------|----------------------|
| Operator Exxon Corporation | | Lease New Mexico "DG" State | | | Well No. 1 |
| Unit Letter P | Section 24 | Township 16 S | Range 28 E | County Eddy | |
| Actual Footage Location of Well: 660 feet from the South line and 660 feet from the East line | | | | | |
| Ground Level Elev: | Producing Formation Premier | Pool Undes. East Redlake-Queen-Grayburg | Dedicated Acreage: 40 Acres | | |

1. Outline the acreage dedicated to the subject well by colored pencil or hachure marks on the plat below.
2. If more than one lease is dedicated to the well, outline each and identify the ownership thereof (both as to working interest and royalty).
3. If more than one lease of different ownership is dedicated to the well, have the interests of all owners been consolidated by communitization, unitization, force-pooling, etc?

Yes No If answer is "yes," type of consolidation _____

If answer is "no," list the owners and tract descriptions which have actually been consolidated. (Use reverse side of this form if necessary.) _____

No allowable will be assigned to the well until all interests have been consolidated (by communitization, unitization, forced-pooling, or otherwise) or until a non-standard unit, eliminating such interests, has been approved by the Commission.



CERTIFICATION

I hereby certify that the information contained herein is true and complete to the best of my knowledge and belief.

Name *Melba Kripling*
Position **UNIT HEAD**
Company **Exxon Corporation**
Box 1600 Midland, Texas
Date **11-4-82**

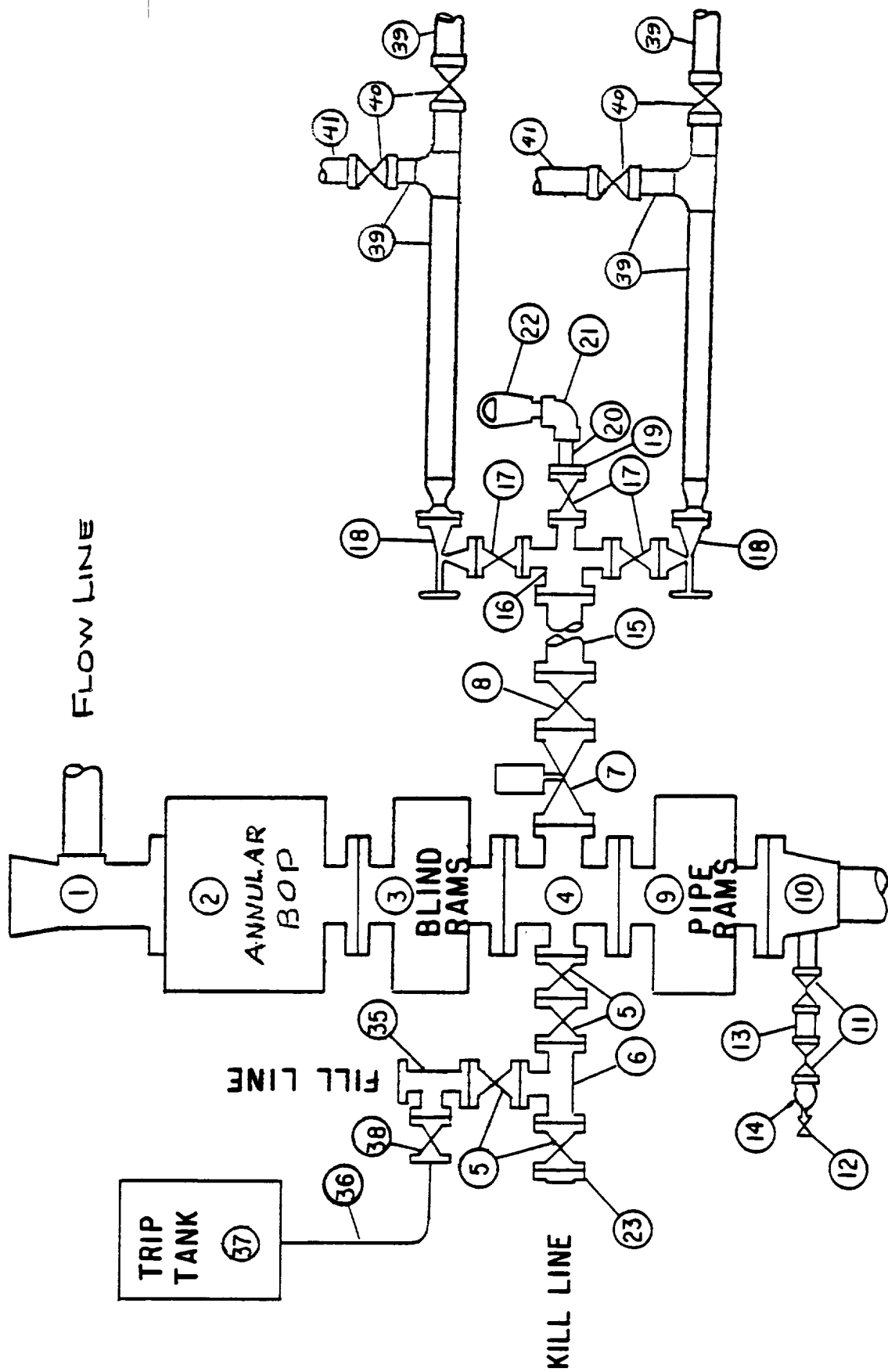
I hereby certify that the well location shown on this plat was plotted from field notes of actual surveys made by me or under my supervision, and that the same is true and correct to the best of my knowledge and belief.

Date Surveyed **10-28-82**
Registered Professional Engineer and/or Land Surveyor **W. J. Richmond**
Certificate No. **6157**

16.5 miles **NE** of **Artesia**, New Mexico

C.E. Sec. File No. **W-A-7928**

MIDLAND DRILLING ORGANIZATION
 BLOWOUT PREVENTER SPECIFICATION
 TYPE II - C



BLOWOUT PREVENTER SPECIFICATION
EQUIPMENT DESCRIPTION

TYPE II

All equipment should be at least 2,000 psi WP or higher unless otherwise specified.

1. Bell Nipple.
2. Hydril or Shaffer bag type preventer.
3. Ram type pressure operated blowout preventer with blind rams.
4. Flanged spool with one 4-inch and one 2-inch (minimum) outlet.
5. 2-inch (minimum) flanged plug or gate valve.
6. 2-inch by 2-inch by 2-inch (minimum) flanged tee.
7. 4-inch pressure operated gate valve.
8. 4-inch flanged gate or plug valve.
9. Ram type pressure operated blowout preventer with pipe rams.
10. Flanged type casing head with one side outlet (furnished by Exxon).
11. 2-inch threaded (or flanged) plug or gate valve (furnished by Exxon).
Flanged on 5000# WP, threaded on 3000# WP or less.
12. Needle valve (furnished by Exxon).
13. 2-inch nipple (furnished by Exxon).
14. Tapped bull plug (furnished by Exxon).
15. 4-inch flanged spacer spool.
16. 4-inch by 2-inch by 2-inch by 2-inch flanged cross.
17. 2-inch flanged plug or gate valve.
18. 2-inch flanged adjustable choke.
19. 2-inch threaded flange.
20. 2-inch XXH nipple.
21. 2-inch forged steel 90° Ell.
22. Cameron (or equal.) threaded pressure gage.
23. Threaded flange.
24. 2-1/2-inch pipe, 300' to pit, anchored.
25. 2-1/2-inch SE gate valve.
26. 2-1/2-inch line to steel pit or separator.

NOTES:

1. Items 3, 4 and 9 may be replaced with double ram type preventer with side outlets between the rams.
2. The two valves next to the stack on the fill and kill line to be closed unless drill string is being pulled.
3. Kill line is for emergency use only. This connection shall not be used for filling.
4. Replacement pipe rams and blind rams shall be on location at all times.
5. Only type U, LWS, and QRC ram type preventers with secondary seals acceptable for 5000 psi WP and higher.
6. Type E ram type BOP's with factory modified side outlets may be used on 3000 psi WP or lower BOP stacks.