

Artesia, NM 88210 UNITED STATES
DEPARTMENT OF THE INTERIOR
GEOLOGICAL SURVEY

SUBMIT IN 1 Llicate*
(Other instructions on
reverse side)

Form approved.
Budget Bureau No. 42-R1425.

30-015-24340
5. LEASE DESIGNATION AND SERIAL NO.

NM-9987

6. IF INDIAN, ALLOTTEE OR TRIBE NAME

7. UNIT AGREEMENT NAME

8. FARM OR LEASE NAME

Ryan Federal

9. WELL NO.

3

10. FIELD AND POOL, OR WILDCAT

Undesignated - Premier

11. SEC., T., R., M., OR BLK.
AND SURVEY OR AREA

Sec. 19-16S-29E

12. COUNTY OR PARISH 13. STATE

Eddy

New Mexico

1a. TYPE OF WORK

DRILL ☒

DEEPEN ☐

PLUG BACK ☐

b. TYPE OF WELL

OIL
WELL ☒

GAS
WELL ☐

OTHER

SINGLY RECEIVED MULTIPLE
ZONE ☒

2. NAME OF OPERATOR

Exxon Corporation

NOV 24 1982

3. ADDRESS OF OPERATOR

P. O. Box 1600, Midland, TX 79702

4. LOCATION OF WELL (Report location clearly and in accordance with any State requirements.)
At surface

1980' FSL and 3300' FEL of Section

At proposed prod. zone

O.C.D.
ARTESIA, OFFICE

14. DISTANCE IN MILES AND DIRECTION FROM NEAREST TOWN OR POST OFFICE*

17.4 miles East from Artesia

15. DISTANCE FROM PROPOSED*

LOCATION TO NEAREST
PROPERTY OR LEASE LINE, FT.
(Also to nearest drlg. unit line, if any) 660' drlg line

16. NO. OF ACRES IN LEASE

1448.11

18. DISTANCE FROM PROPOSED LOCATION*

TO NEAREST WELL, DRILLING, COMPLETED,
OR APPLIED FOR, ON THIS LEASE, FT. 1320' S to #5

19. PROPOSED DEPTH

2300'

17. NO. OF ACRES ASSIGNED
TO THIS WELL

40

20. ROTARY OR CABLE TOOLS

Rotary

21. ELEVATIONS (Show whether DF, RT, GR, etc.)

3651' GR

22. APPROX. DATE WORK WILL START*

December 19, 1982

23. PROPOSED CASING AND CEMENTING PROGRAM

SIZE OF HOLE	SIZE OF CASING	WEIGHT PER FOOT	SETTING DEPTH	QUANTITY OF CEMENT
12 1/4"	8 5/8"	24#	350'	225 sx CIRCULATE
7 7/8"	5 1/2"	14#	2300'	650 sx

Gas is not dedicated to a purchaser.

RECEIVED

NOV 10 1982

OIL & GAS
MINERAL EXPLORATION SERVICE
ROCKWELL, NEW MEXICO

IN ABOVE SPACE DESCRIBE PROPOSED PROGRAM: If proposal is to deepen or plug back, give data on present productive zone and proposed new productive zone. If proposal is to drill or deepen directionally, give pertinent data on subsurface locations and measured and true vertical depths. Give blowout preventer program, if any.

24.

SIGNED

Melba Knippling

TITLE

Unit Head

DATE

November 9, 1982

(This space for Federal or State office use)

APPROVED

PERMIT NO.

(Orig. Sgd.) GEORGE H. STEWART

APPROVAL DATE

APPROVED BY

NOV 23 1982

TITLE

DATE

CONDITIONS OF APPROVAL

JAMES A. GUINAM
DISTRICT SUPERVISOR

Federal Lse. No. _____ All distances must be from the outer boundaries of the Section.

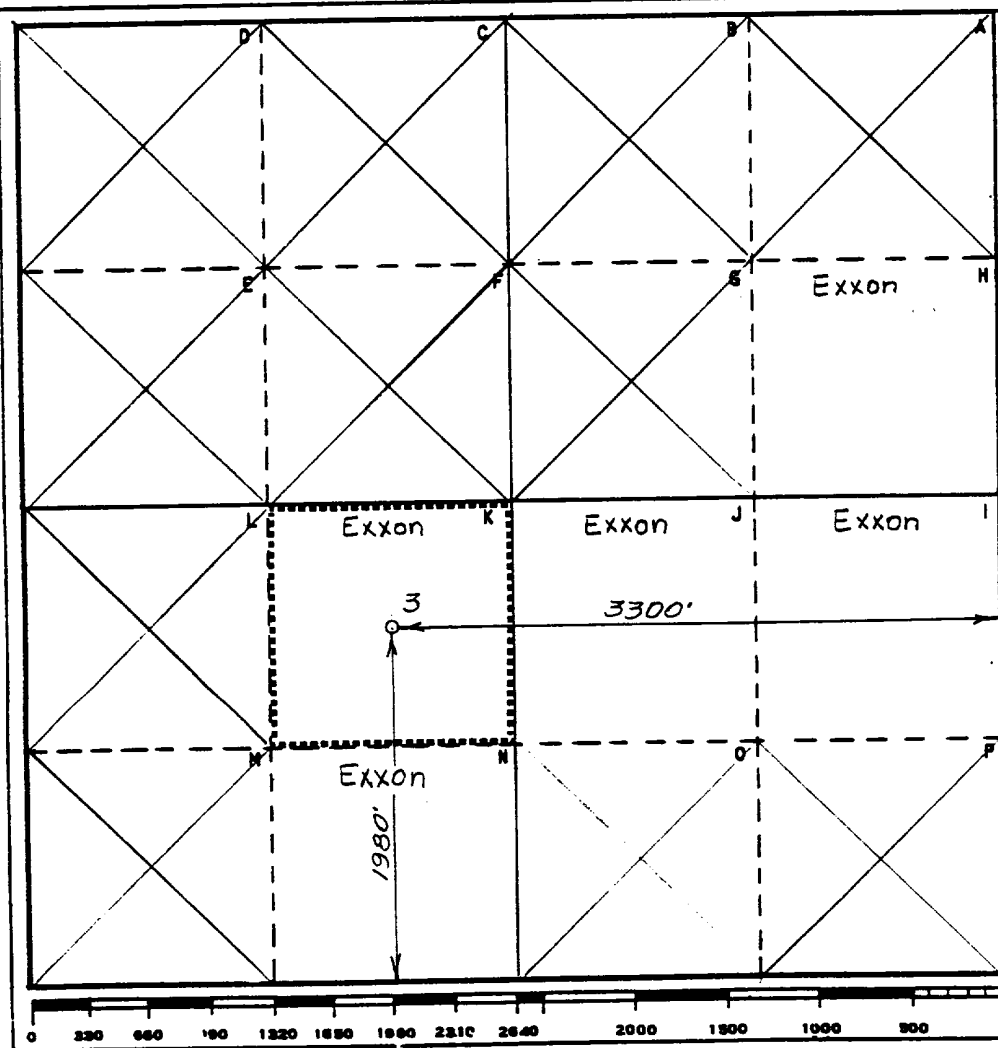
Operator Exxon Corporation			Lease Ryan Federal		Well No. 3
Unit Letter K	Section 19	Township 16 S	Range 29 E	County Eddy	
Actual Footage Location of Well: 1980 feet from the South line and 3300 feet from the East line					
Ground Level Elev: 3651	Producing Formation Penrose		Pool Undesignated	Dedicated Acreage: 40 Acres	

1. Outline the acreage dedicated to the subject well by colored pencil or hachure marks on the plat below.
2. If more than one lease is dedicated to the well, outline each and identify the ownership thereof (both as to working interest and royalty).
3. If more than one lease of different ownership is dedicated to the well, have the interests of all owners been consolidated by communitization, unitization, force-pooling, etc?

☐ Yes ☐ No If answer is "yes," type of consolidation _____

If answer is "no," list the owners and tract descriptions which have actually been consolidated. (Use reverse side of this form if necessary.) _____

No allowable will be assigned to the well until all interests have been consolidated (by communitization, unitization, forced-pooling, or otherwise) or until a non-standard unit, eliminating such interests, has been approved by the Commission.



CERTIFICATION

I hereby certify that the information contained herein is true and complete to the best of my knowledge and belief.

Name
Melba Knippling
Position

UNIT HEAD

Company Exxon Corporation
Box 1600 Midland, Texas

Date
11-2-82

I hereby certify that the well location shown on this plat was plotted from field notes of actual surveys made by me or under my supervision, and that the same is true and correct to the best of my knowledge and belief.

Date Surveyed
10-28-82

Registered Professional Engineer
and/or Land Surveyor

W. J. Rahman
Certificate No.
6157

17.4 Miles E of Artesia, New Mexico

C.E. Sec. File No. WA-7923

Federal Lse. No. _____ All distances must be from the outer boundaries of the Section.

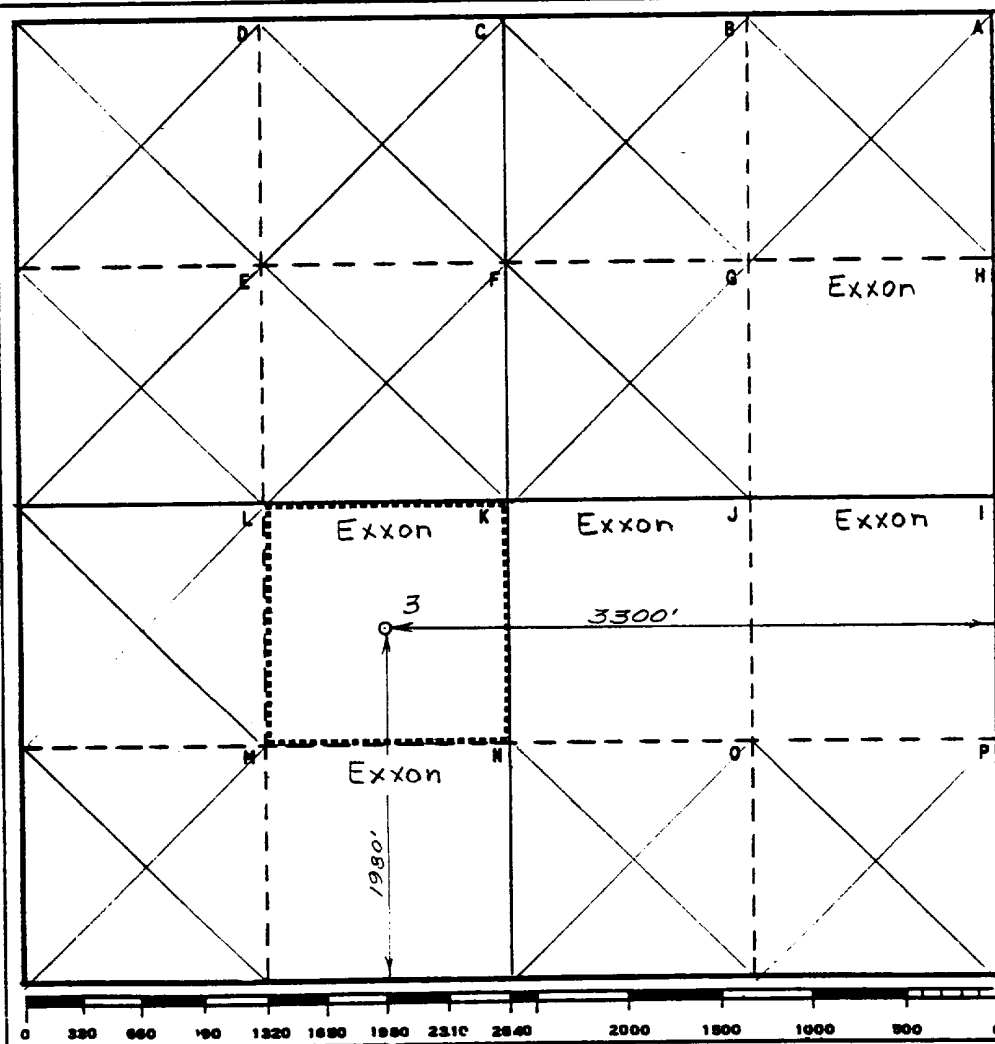
Operator Exxon Corporation			Lease Ryan Federal		Well No. 3
Unit Letter K	Section 19	Township 16 S	Range 29 E	County Eddy	
Actual Footage Location of Well: 1980 feet from the South line and 3300 feet from the East line					
Ground Level Elev: 3651	Producing Formation Premier	Pool Undesignated	Dedicated Acreage: 40 Acres		

1. Outline the acreage dedicated to the subject well by colored pencil or hachure marks on the plat below.
2. If more than one lease is dedicated to the well, outline each and identify the ownership thereof (both as to working interest and royalty).
3. If more than one lease of different ownership is dedicated to the well, have the interests of all owners been consolidated by communitization, unitization, force-pooling, etc?

☐ Yes ☐ No If answer is "yes," type of consolidation _____

If answer is "no," list the owners and tract descriptions which have actually been consolidated. (Use reverse side of this form if necessary.) _____

No allowable will be assigned to the well until all interests have been consolidated (by communitization, unitization, forced-pooling, or otherwise) or until a non-standard unit, eliminating such interests, has been approved by the Commission.



CERTIFICATION

I hereby certify that the information contained herein is true and complete to the best of my knowledge and belief.

Name
Melba Kripling
Position

UNIT HEAD

Company Exxon Corporation
Box 1600 Midland, Texas

Date
11-2-82

I hereby certify that the well location shown on this plat was plotted from field notes of actual surveys made by me or under my supervision, and that the same is true and correct to the best of my knowledge and belief.

Date Surveyed
10-28-82

Registered Professional Engineer
and/or Land Surveyor

W. J. Richmond
Certificate No.
6157

17.4 Miles E of Artesia, New Mexico

C.E. Sec. File No. WA-7022

RYAN FEDERAL #3
Ten Point Plan
Eddy County, New Mexico
Federal Lease No. NM-9987

1. The geologic name of the surface formation: Recent.
2. The estimated tops of important geologic markers:

Salado	280'
Yates	700'
Seven Rivers	920'
Queen	1675'
Grayburg	1830'
Premier Sand	2190'

3. The estimated depths at which anticipated water, oil, gas, or other mineral bearing formations are expected to occur:

Water	0-280'
Oil & Gas - Queen	
Oil - Seven Rivers	

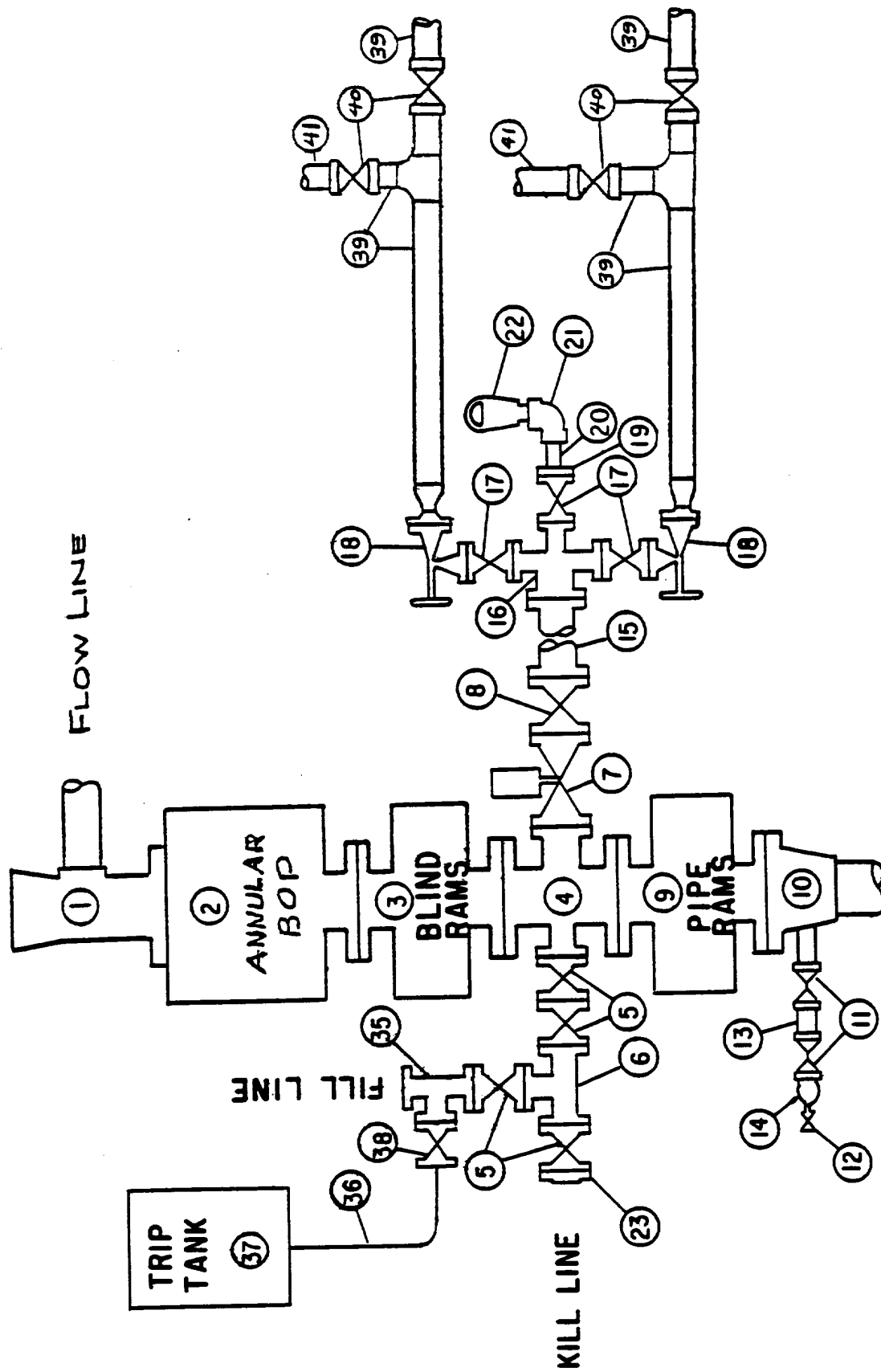
4. Proposed Casing Program:

<u>String</u>	<u>Size</u>	<u>Weight/Grade</u>	<u>Condition</u>	<u>Depth Interval</u>
Surface	8 5/8"	24/K-55/STC	New or Used	0- 350'
Production	5 1/2"	14/K-55/STC	New or Used	0-2300'

5. Minimum specifications for pressure control equipment:

- a. Wellhead Equipment - Threaded type 2000 psi WP for 8 5/8" x 5 1/2" casing program and 2 7/8" tubing.
- b. Blowout Preventers - Refer to attached drawing and list of equipment titled "Type II-C" for description of BOP stack and choke manifold.
- c. BOP Control Unit - Unit will be hydraulically operated and have at least 4 control stations.
- d. Testing - When installed on 8 5/8" surface casing the BOP stack will be tested to a low pressure (200-300 psi) and to 2000 psi. Casing rams will be tested in like manner when installed prior to running production casing. An operational test of the blowout preventers will be performed on each round trip (but not more than once each day); the annular and pipe ram preventers will be closed on drill pipe, and the blind rams will be closed while pipe is out of the hole.

MIDLAND DRILLING ORGANIZATION BLOWOUT PREVENTER SPECIFICATION TYPE II - C



BLOWOUT PREVENTER SPECIFICAT. I
EQUIPMENT DESCRIPTION

TYPE II-C

All equipment should be at least 2000 psi WP or higher unless otherwise specified.

1. Bell nipple.
2. Hydril or Shaffer bag type preventer.
3. Ram type pressure operated blowout preventer with blind rams.
4. Flanged spool with one 4-inch and one 2-inch (minimum) outlet.
5. 2-inch (minimum) flanged plug or gate valve.
6. 2-inch by 2-inch by 2-inch (minimum) flanged tee.
7. 4-inch pressure operated gate valve.
8. 4-inch flanged gate or plug valve.
9. Ram type pressure operated blowout preventer with pipe rams.
10. Flanged type casing head with one side outlet (furnished by Exxon).
11. 2-inch threaded (or flanged) plug or gate valve (furnished by Exxon).
Flanged on 5000# WP, threaded on 3000# WP or less.
12. Needle valve (furnished by Exxon).
13. 2-inch nipple (furnished by Exxon).
14. Tapped bull plug (furnished by Exxon).
15. 4-inch flanged spacer spool.
16. 4-inch by 2-inch by 2-inch flanged cross.
17. 2-inch flanged plug or gate valve.
18. 2-inch flanged adjustable choke.
19. 2-inch threaded flange.
20. 2-inch XXH nipple.
21. 2-inch forged steel 90° Ell.
22. Cameron (or equal.) threaded pressure gage.
23. Threaded flange.

35. 2-inch flanged tee.
36. 3-inch (minimum) hose. (Furnished by Exxon).
37. Trip tank. (Furnished by Exxon).
38. 2-inch flanged plug or gate valve.
39. 2-1/2-inch pipe, 300' to pit, anchored.
40. 2-1/2-inch SE valve.
41. 2-1/2-inch line to steel pit or separator.

NOTES:

1. Items 3, 4 and 9 may be replaced with double ram type preventer with side outlets between the rams.
2. The two valves next to the stack on the fill and kill line to be closed unless drill string is being pulled.
3. Kill line is for emergency use only. This connection shall not be used for filling.
4. Replacement pipe rams and blind rams shall be on location at all times.
5. Only type U, LWS and QRC ram type preventers with secondary seals are acceptable for 5000 psi WP and higher BOP stacks.
6. Type E ram-type BOP's with factory modified side outlets may be used on 3000 psi or lower WP BOP stacks.

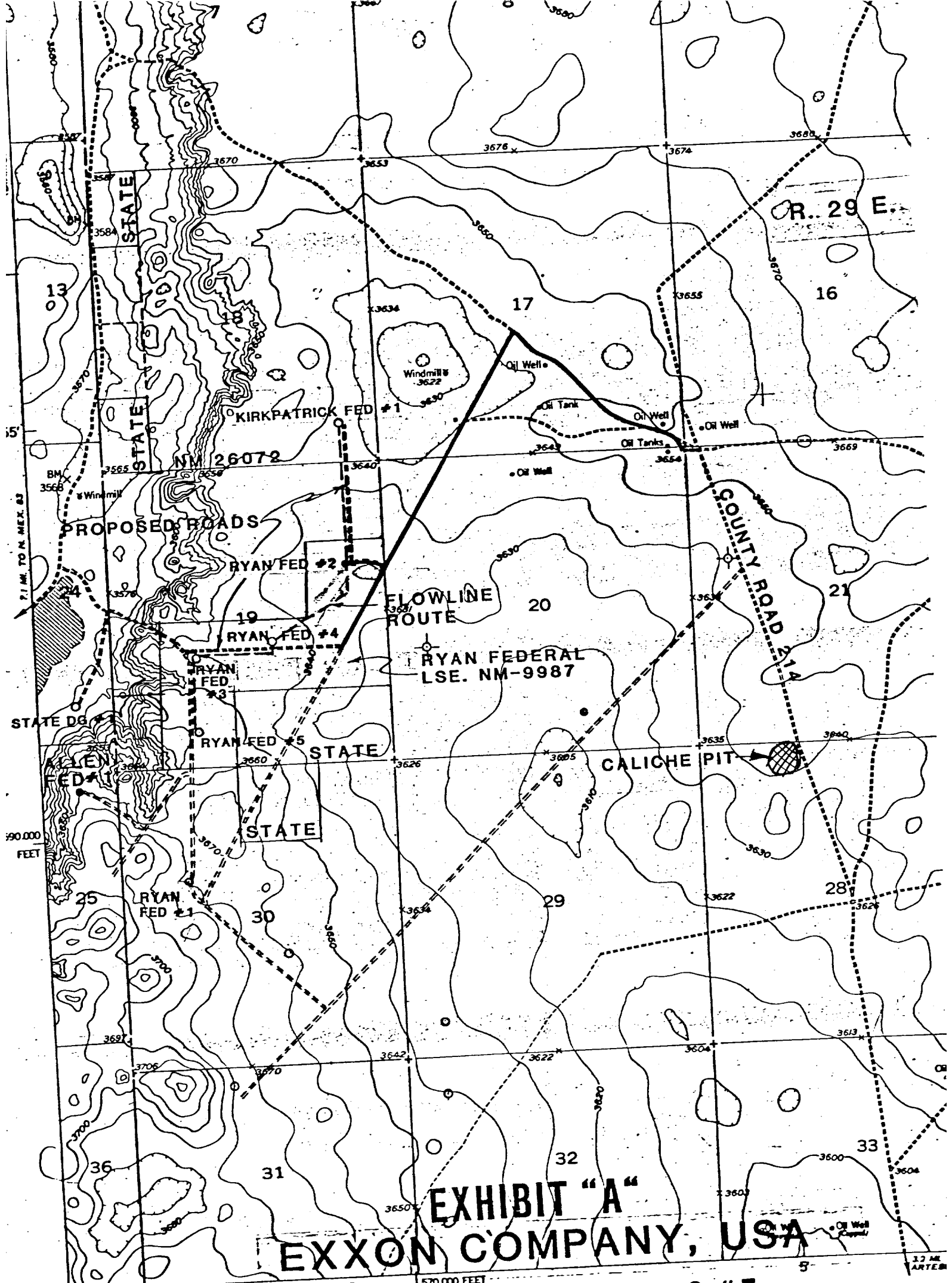
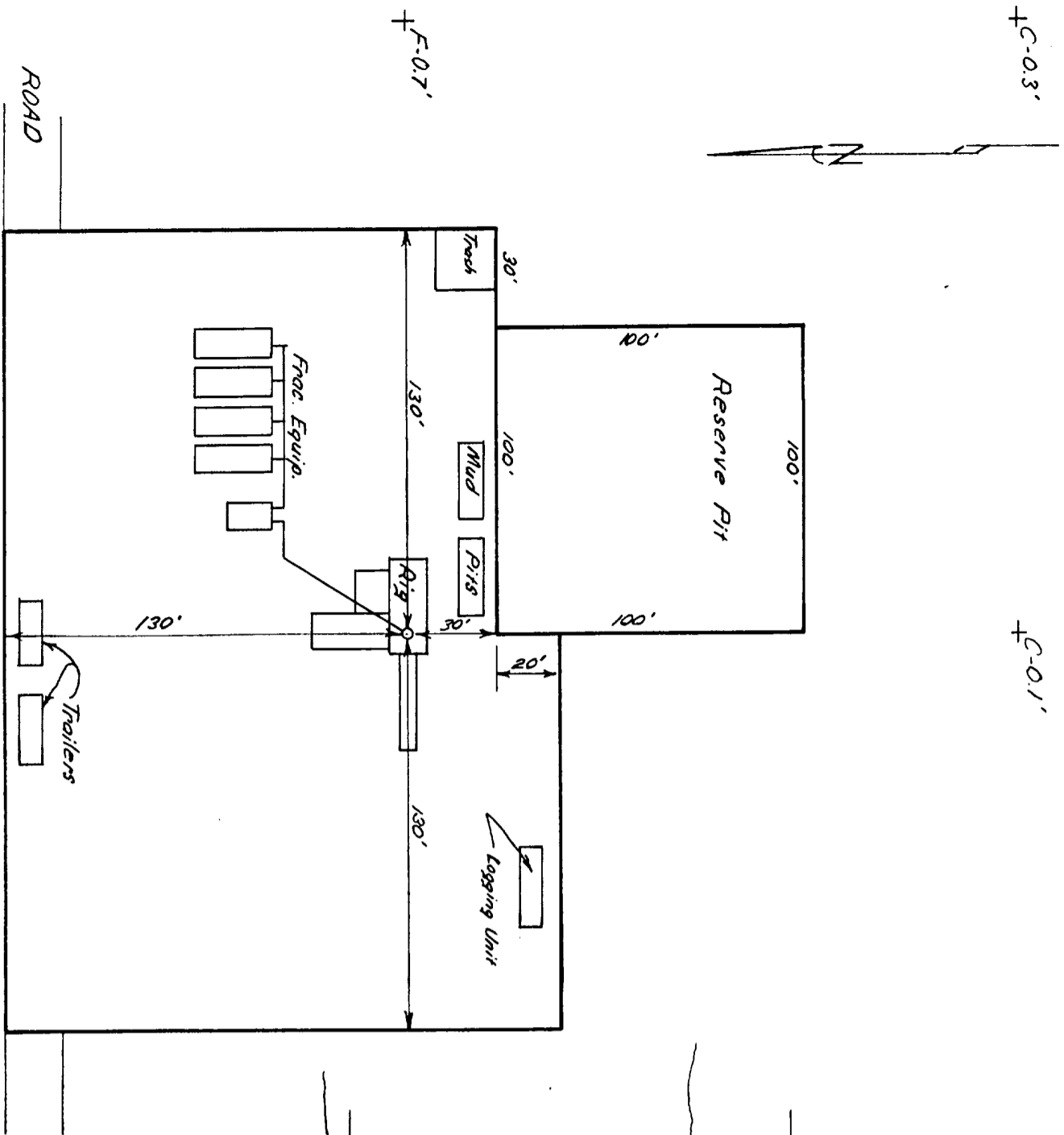


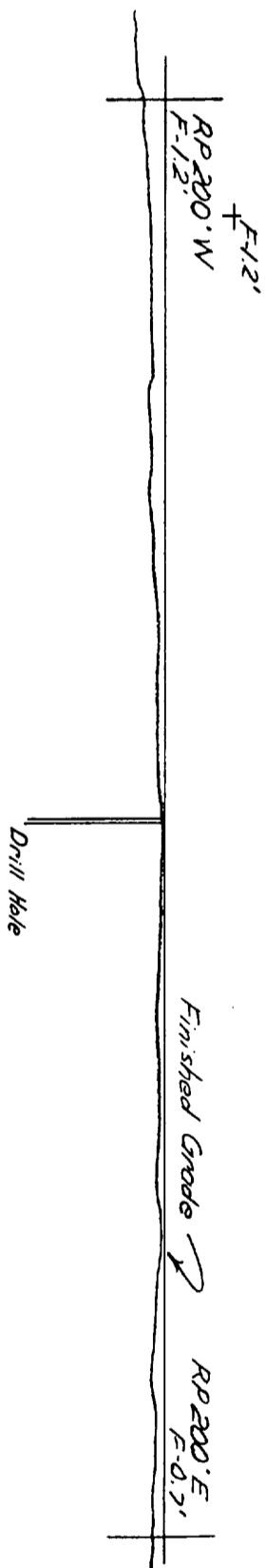
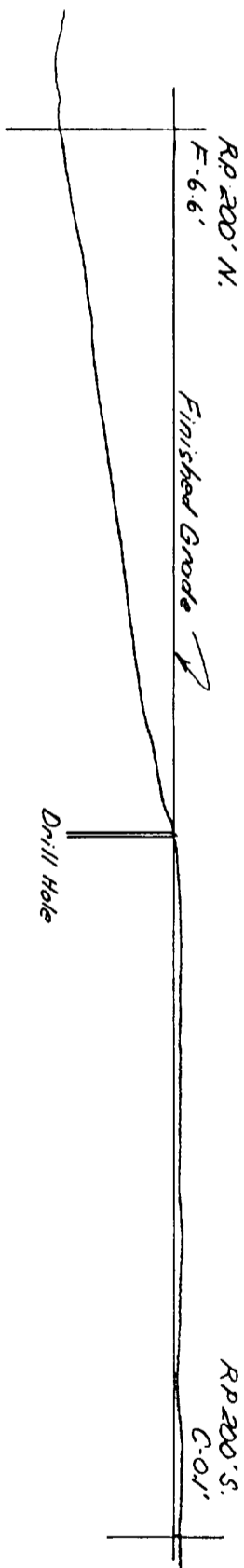
EXHIBIT "A"
EXXON COMPANY, USA

RYAN FEDERAL #3, #4, & #5
KIRKPATRICK FEDERAL #1

- EXISTING ACCESS ROADS
- - - PROPOSED ACCESS ROADS
- - - PROPOSED PIPELINE ROUTES



WELL SITE LAYOUT
SCALE: 1"=50'



CROSS SECTIONS
SCALE: 1"=50' Hor.
1"=10' Vert.

EXHIBIT "B"

EXXON'S RYAN FEDERAL #3 SECTION 19, T-16-S, R-29-E, 3 rd PM EDDY COUNTY, NEW MEX.			EXXON COMPANY U.S.A. (a division of Exxon Corporation) PRODUCTION DEPARTMENT		
DRAWN	C.S.S.	ENGR. SECTION	Civil	REVISD	
CHECKED	<i>[Signature]</i>	APPROVED		DATE	11/8/82
				SCALE	shown
				JOB NO.	
				FILE NO.	WB-1801