

Exxon-Lse No. _____

NEW MEXICO OIL CONSERVATION COMMISSION

DD
LAT NM 88210Form C-102
Supersedes C-128
Effective 1-1-65

State Lse.No. _____

WELL LOCATION AND ACREAGE DEDICATION

Federal Lse.No. _____

All distances must be from the outer boundaries of the Section.

Corrected Plot

Operator Exxon Corporation			Lease Yates 'C' FEDERAL		Well No. 25
Unit Letter Lot 6	Section 4	Township 21 S	Range 27 E	County Eddy	
Actual Footage Location of Well: 1446 feet from the NORTH line and 1980 feet from the West line					
Ground Level Elev: 3193'	Producing Formation Delaware		Pool Undesig. Avalon		Dedicated Acreage: 40 Acres

1. Outline the acreage dedicated to the subject well by colored pencil or hachure marks on the plat below.
2. If more than one lease is dedicated to the well, outline each and identify the ownership thereof (both as to working interest and royalty).
3. If more than one lease of different ownership is dedicated to the well, have the interests of all owners been consolidated by communitization, unitization, force-pooling, etc?

☐ Yes ☐ No If answer is "yes," type of consolidation _____

If answer is "no," list the owners and tract descriptions which have actually been consolidated. (Use reverse side of this form if necessary.) _____

No allowable will be assigned to the well until all interests have been consolidated (by communitization, unitization, forced-pooling, or otherwise) or until a non-standard unit, eliminating such interests, has been approved by the Commission.

RECEIVED BY

SEP 22 1983

O. C. D.
ARTESIA, OFFICE

CERTIFICATION

I hereby certify that the information contained herein is true and complete to the best of my knowledge and belief.

Name

Position

UNIT HEAD

Company Exxon Corporation

Box 1600 Midland, Texas

Date

6-9-83

I hereby certify that the well location shown on this plat was plotted from field notes of actual surveys made by me or under my supervision, and that the same is true and correct to the best of my knowledge and belief.

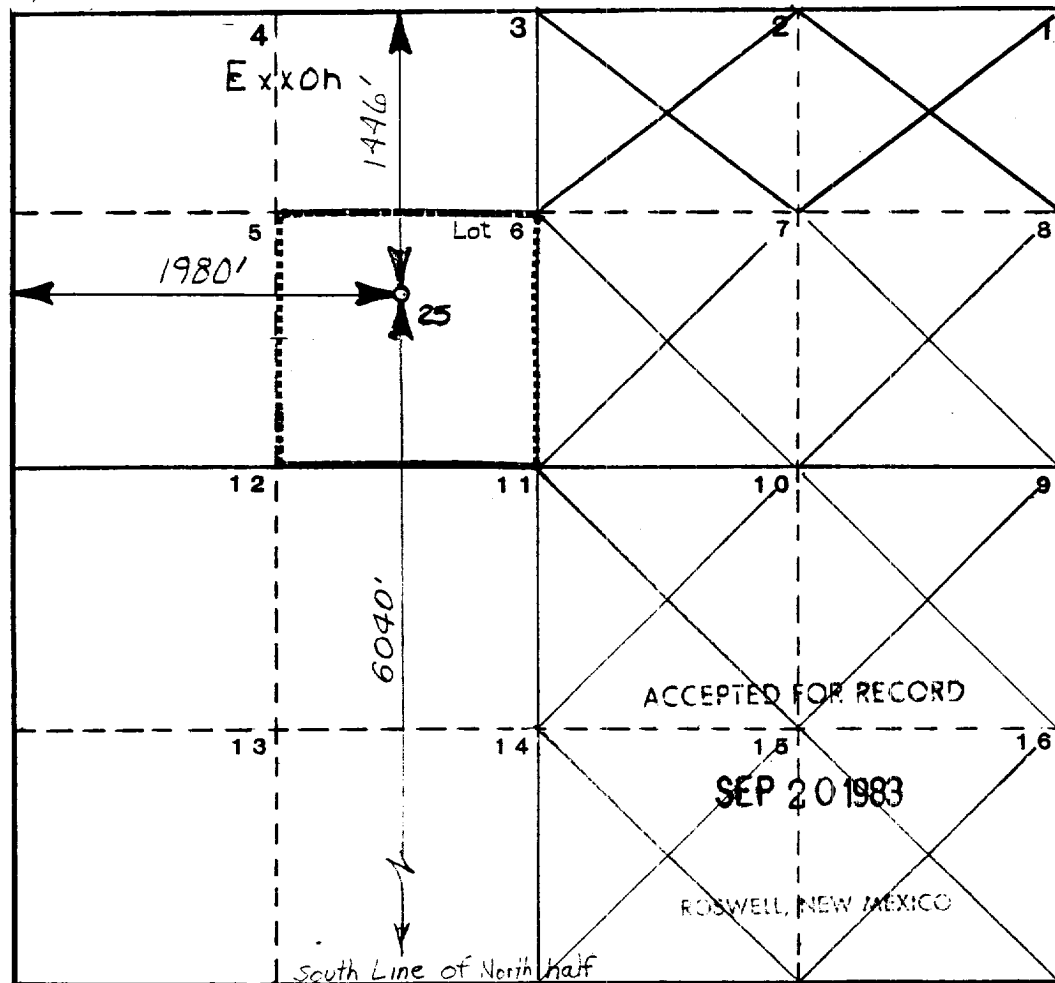
Date Surveyed

5-10-83

Registered Professional Engineer
and/or Land Surveyor

Certificate No.

6157



8 N Carlsbad

New Mexico

WA-8093-D