

NO. OF COPIES RECEIVED	
DISTRIBUTION	
SANTAFE	✓
FILE	✓
U.S.G.S.	✓
LAND OFFICE	✓
OPERATOR	✓

RECEIVED
NEW MEXICO OIL CONSERVATION COMMISSION

JUN 24 1983

O. C. D.
ARTESIA, OFFICE

30-615-24511
Form C-101
Revised 1-1-65

5A. Indicate Type of Lease
STATE <input checked="" type="checkbox"/> FEE <input type="checkbox"/>
5. State Oil & Gas Lease No.
V-693

APPLICATION FOR PERMIT TO DRILL, DEEPEN, OR PLUG BACK

1a. Type of Work		7. Unit Agreement Name	
b. Type of Well OIL WELL <input checked="" type="checkbox"/> GAS WELL <input type="checkbox"/> OTHER <input type="checkbox"/>		8. Farm or Lease Name	
DEEPEN <input type="checkbox"/> PLUG BACK <input type="checkbox"/>		New Mexico DO State	
2. Name of Operator		9. Well No.	
Exxon Corporation ✓		1	
3. Address of Operator		10. Field and Pool, or Wildcat	
P. O. Box 1600, Midland, Texas 79702		Undesignated - Burton	
4. Location of Well		12. County	
UNIT LETTER Lot 9 LOCATED 4620 FEET FROM THE South LINE		Eddy	
AND 560 FEET FROM THE East LINE OF SEC. 6 TWP. 21S RGE. 27E NMFM			
19. Proposed Depth		19A. Formation	
5,300'		Delaware	
20. Rotary or C.T.		Rotary	
21. Elevations (Show whether DF, RT, etc.)		22. Approx. Date Work will start	
Will Submit Later 3		3rd Quarter, 1983	
21A. Kind & Status Plug. Bond		21B. Drilling Contractor	
Blanket		Unknown	

23.

PROPOSED CASING AND CEMENT PROGRAM

SIZE OF HOLE	SIZE OF CASING	WEIGHT PER FOOT	SETTING DEPTH	SACKS OF CEMENT	EST. TOP
26"	20"	94 #	40'	25 sx. Redi-Mix	Surface
17 1/2"	13 3/8"	54.5 #	600'	500 sx.	Surface
11"	8 5/8"	24 #	2,500'	700 sx	Tie to Surface csg
7 7/8"	5 1/2"	14 - 15.5 #	5,000'	700 sx	Tie to Surface csg int.

Mud: 0-2500' EW 8.4-8.8 PPG
2500-5300' CBW 8.8-9.4 PPG
2500-5300' CBW

BOP: 13 3/8"/Type II-C/ 2000 PSI
8 5/8"/Type II-C/ 2000 PSI

For Test @ 1000' to 1500' 7-9-83

APPROVAL VALID FOR 180 DAYS
PERMIT EXPIRES 1-5-84
UNLESS DRILLING UNDERWAY

IN ABOVE SPACE DESCRIBE PROPOSED PROGRAM: IF PROPOSAL IS TO DEEPEN OR PLUG BACK, GIVE DATA ON PRESENT PRODUCTIVE ZONE AND PROPOSED NEW PRODUCTIVE ZONE. GIVE BLOWOUT PREVENTER PROGRAM, IF ANY.

I hereby certify that the information above is true and complete to the best of my knowledge and belief.

Signed Edgar Runkel Title Unit Head Date June 23, 1983
Melba Knipling
(This space for State Use)

APPROVED BY Melba Knipling TITLE OIL AND GAS INSPECTOR DATE JUL 5 1983
CONDITIONS OF APPROVAL, IF ANY:

Notify NMO in writing
time to submit and in
the 25/5 casing

Exxon Use No. _____

NEW MEXICO OIL CONSERVATION COMMISSION

Form C-102
Supersedes C-128
Effective 1-1-65

State Use No. _____

WELL LOCATION AND ACREAGE DEDICATION PLAT

Federal Use No. _____

All distances must be from the outer boundaries of the Section.

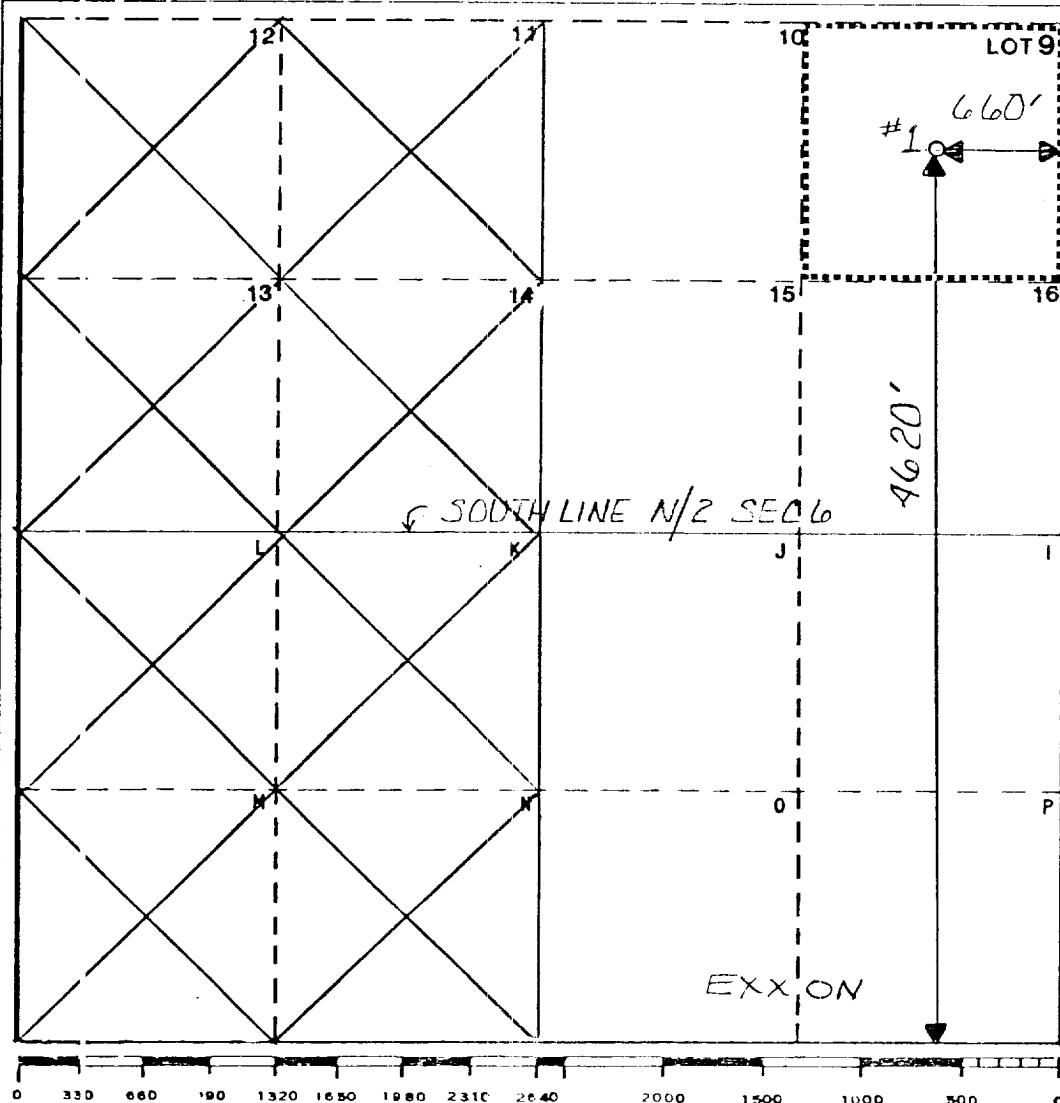
Operator Exxon Corporation			Lease NEW MEXICO "DO" STATE		Well No. 1
Unit Letter 1 LOT 9	Section 6	Township 21S	Range 27E	County EDDY	
Actual Footage Location of Well: 4620 feet from the SOUTH line and 660 feet from the EAST line					
Ground Level Elev. 5	Producing Formation DELAWARE	Pool UNDESIG. BURTON FLAT	Dedicated Acreage: 40 Acres		

1. Outline the acreage dedicated to the subject well by colored pencil or hatchure marks on the plat below.
2. If more than one lease is dedicated to the well, outline each and identify the ownership thereof (both as to working interest and royalty).
3. If more than one lease of different ownership is dedicated to the well, have the interests of all owners been consolidated by communitization, unitization, force-pooling, etc?

☐ Yes ☐ No If answer is "yes," type of consolidation _____

If answer is "no," list the owners and tract descriptions which have actually been consolidated. (Use reverse side of this form if necessary.) _____

No allowable will be assigned to the well until all interests have been consolidated (by communitization, unitization, forced-pooling, or otherwise) or until a non-standard unit, eliminating such interests, has been approved by the Commission.



CERTIFICATION

I hereby certify that the information contained herein is true and complete to the best of my knowledge and belief.

Name *Edgar Runkel*
Position
UNIT HEAD

Company Exxon Corporation
Box 1600 Midland, Texas

Date 6-21-83

I hereby certify that the location shown on this plat was plotted from field notes of actual surveys made by me or under my supervision, and that the same is true and correct to the best of my knowledge and belief.

6-13-83

Date Surveyed

Registered Professional Engineer and/or Land Surveyor

W. J. Richmond

Certificate No. 6157

6 Miles NORTH of CARLSBAD, New Mexico

C.E. Sec. File No. A-7139

BLOWOUT PREVENTER SPECIFICATION
EQUIPMENT DESCRIPTION

TYPE II-C

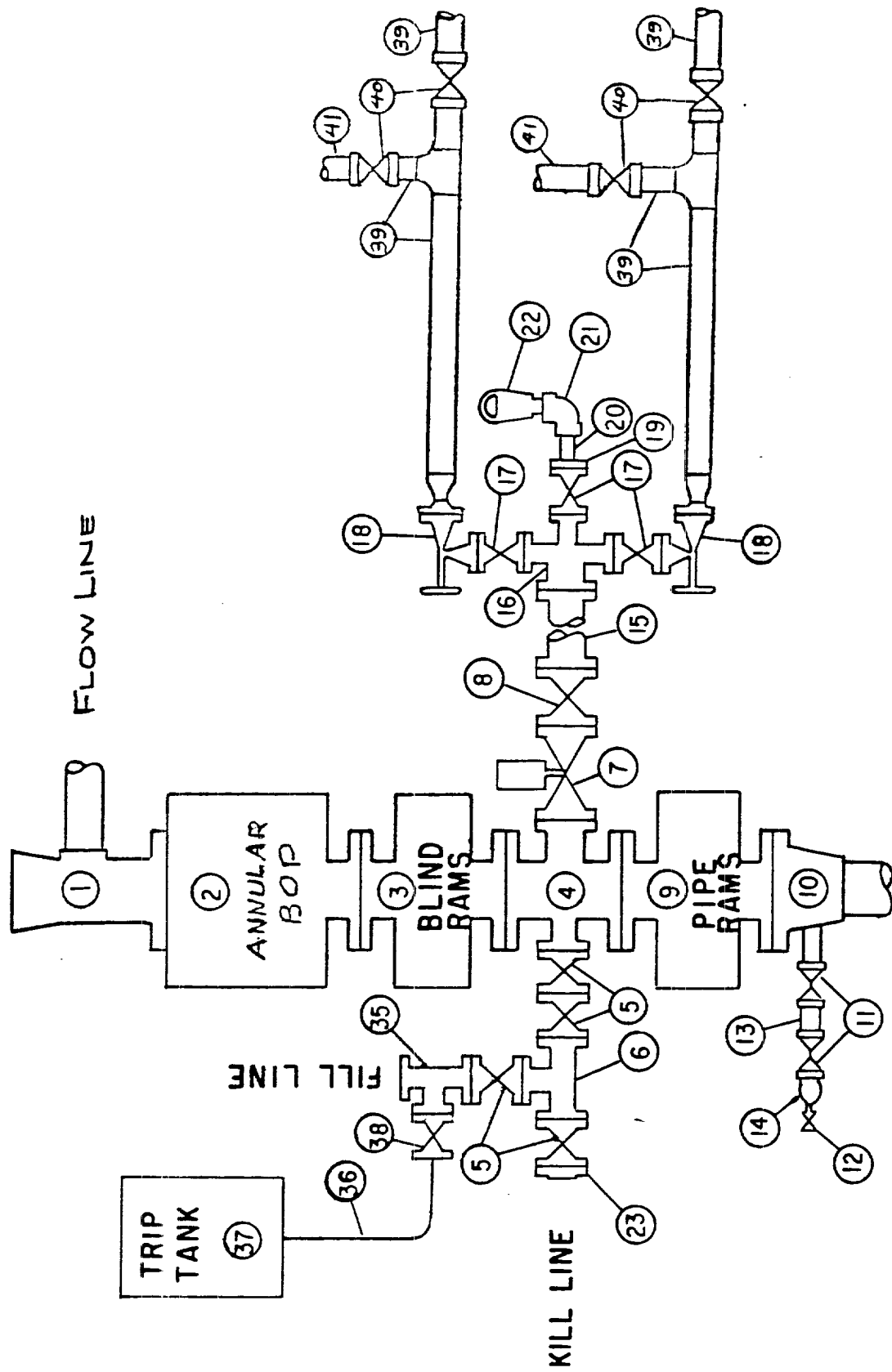
All equipment should be at least 2000 psi WP or higher unless otherwise specified.

1. Bell nipple.
2. Hydril or Shaffer bag type preventer.
3. Ram type pressure operated blowout preventer with blind rams.
4. Flanged spool with one 4-inch and one 2-inch (minimum) outlet.
5. 2-inch (minimum) flanged plug or gate valve.
6. 2-inch by 2-inch by 2-inch (minimum) flanged tee.
7. 4-inch pressure operated gate valve.
8. 4-inch flanged gate or plug valve.
9. Ram type pressure operated blowout preventer with pipe rams.
10. Flanged type casing head with one side outlet (furnished by Exxon).
11. 2-inch threaded (or flanged) plug or gate valve (furnished by Exxon).
Flanged on 5000# WP, threaded on 3000# WP or less.
12. Needle valve (furnished by Exxon).
13. 2-inch nipple (furnished by Exxon).
14. Tapped bull plug (furnished by Exxon).
15. 4-inch flanged spacer spool.
16. 4-inch by 2-inch by 2-inch by 2-inch flanged cross.
17. 2-inch flanged plug or gate valve.
18. 2-inch flanged adjustable choke.
19. 2-inch threaded flange.
20. 2-inch XXH nipple.
21. 2-inch forged steel 90° Ell.
22. Cameron (or equal.) threaded pressure gage.
23. Threaded flange.
35. 2-inch flanged tee.
36. 3-inch (minimum) hose. (Furnished by Exxon).
37. Trip tank. (Furnished by Exxon).
38. 2-inch flanged plug or gate valve.
39. 2-1/2-inch pipe, 300' to pit, anchored.
40. 2-1/2-inch SE valve.
41. 2-1/2-inch line to steel pit or separator.

NOTES:

1. Items 3, 4 and 9 may be replaced with double ram type preventer with side outlets between the rams.
2. The two valves next to the stack on the fill and kill line to be closed unless drill string is being pulled.
3. Kill line is for emergency use only. This connection shall not be used for filling.
4. Replacement pipe rams and blind rams shall be on location at all times.
5. Only type U, LWS and QRC ram type preventers with secondary seals are acceptable for 5000 psi WP and higher BOP stacks.
6. Type E ram-type BOP's with factory modified side outlets may be used on 3000 psi or lower WP BOP stacks.

MIDLAND DRILLING ORGANIZATION
 BLOWOUT PREVENTER SPECIFICATION
 TYPE II - C



9/15/73