

UNITED STATES
DEPARTMENT OF THE INTERIOR
GEOLOGICAL SURVEYNM OIL (Oil and Gas Division)
Draper DD
Artesia, NM 88210

30-015-24514

APPLICATION FOR PERMIT TO DRILL, DEEPEN, OR PLUG BACK

1a. TYPE OF WORK

DRILL ☒DEEPEN ☐RECEIVED BACK ☐

b. TYPE OF WELL

OIL WELL ☐GAS WELL ☒

OTHER

SINGLE ZONE ☒MULTIPLE ZONE ☐

2. NAME OF OPERATOR

PERRY R. BASS

3. ADDRESS OF OPERATOR

P O BOX 2760 MIDLAND TX 79702

4. LOCATION OF WELL (Report location clearly and in accordance with any State requirements.)*

At surface 660' FNL, 1980' FWL, SEC 17, T23S, R31E

At proposed prod. zone

SAME AS ABOVE

14. DISTANCE IN MILES AND DIRECTION FROM NEAREST TOWN OR POST OFFICE*

40 MILES SOUTHWEST OF CARLSBAD, NEW MEXICO

15. DISTANCE FROM PROPOSED*

LOCATION TO NEAREST
PROPERTY OR LEASE LINE, FT.
(Also to nearest drlg. unit line, if any)

660'

16. NO. OF ACRES IN LEASE

320

17. NO. OF ACRES ASSIGNED
TO THIS WELL

320

18. DISTANCE FROM PROPOSED LOCATION*

TO NEAREST WELL, DRILLING, COMPLETED,
OR APPLIED FOR, ON THIS LEASE, FT.

--

19. PROPOSED DEPTH

14,700

20. ROTARY OR CABLE TOOLS

ROTARY

21. ELEVATIONS (Show whether DF, RT, GR, etc.)

3320' GL

22. APPROX. DATE WORK WILL START*

23.

PROPOSED CASING AND CEMENTING PROGRAM

SIZE OF HOLE	SIZE OF CASING	WEIGHT PER FOOT	SETTING DEPTH	QUANTITY OF CEMENT
18 7/8"	16"	65# GS	600'+	1100 sx + Circ to surface
15"	10 3/4"	40.5# GS	4,000'+	2400 sx + Circ to surface
9 5/8"	7 5/8"	33.7#	11,250'+	450 sx + Est. TOC @ 10,000'
6 1/2"	5" liner	15#	14,700'+	400 sx +

Drilling procedure, BOPE diagrams, anticipated tops, casing design, mud program,
and surface use plans are attached.

Gas is dedicated.

RECEIVED
FEB 14 1983
MINERAL SERVICE
ROSWELL, NEW MEXICO
Postul D-1
A. H. H. H. H. H.
11-8-83

IN ABOVE SPACE DESCRIBE PROPOSED PROGRAM: If proposal is to deepen or plug back, give data on present productive zone and proposed new productive zone. If proposal is to drill or deepen directionally, give pertinent data on subsurface locations and measured and true vertical depths. Give blowout preventer program, if any.

24.

SIGNED

Mark A. Losch

TITLE Sr. Drilling Engineer

DATE

2-11-83

(This space for Federal or State office use)

PERMIT NO.

APPROVAL DATE

APPROVED BY

Janet A. Gilliam

TITLE

ACTING DISTRICT MANAGER

DATE

6-28-83

CONDITIONS OF APPROVAL, IF ANY:

APPROVAL SUBJECT TO
GENERAL REQUIREMENTS AND
SPECIAL STIPULATIONS
ATTACHED

**NEW MEXICO OIL CONSERVATION COMMISSION
WELL LOCATION AND ACREAGE DEDICATION PLAT**

Form C-102
Supersedes C-128
Effective 1-1-65

All distances must be from the outer boundaries of the Section.

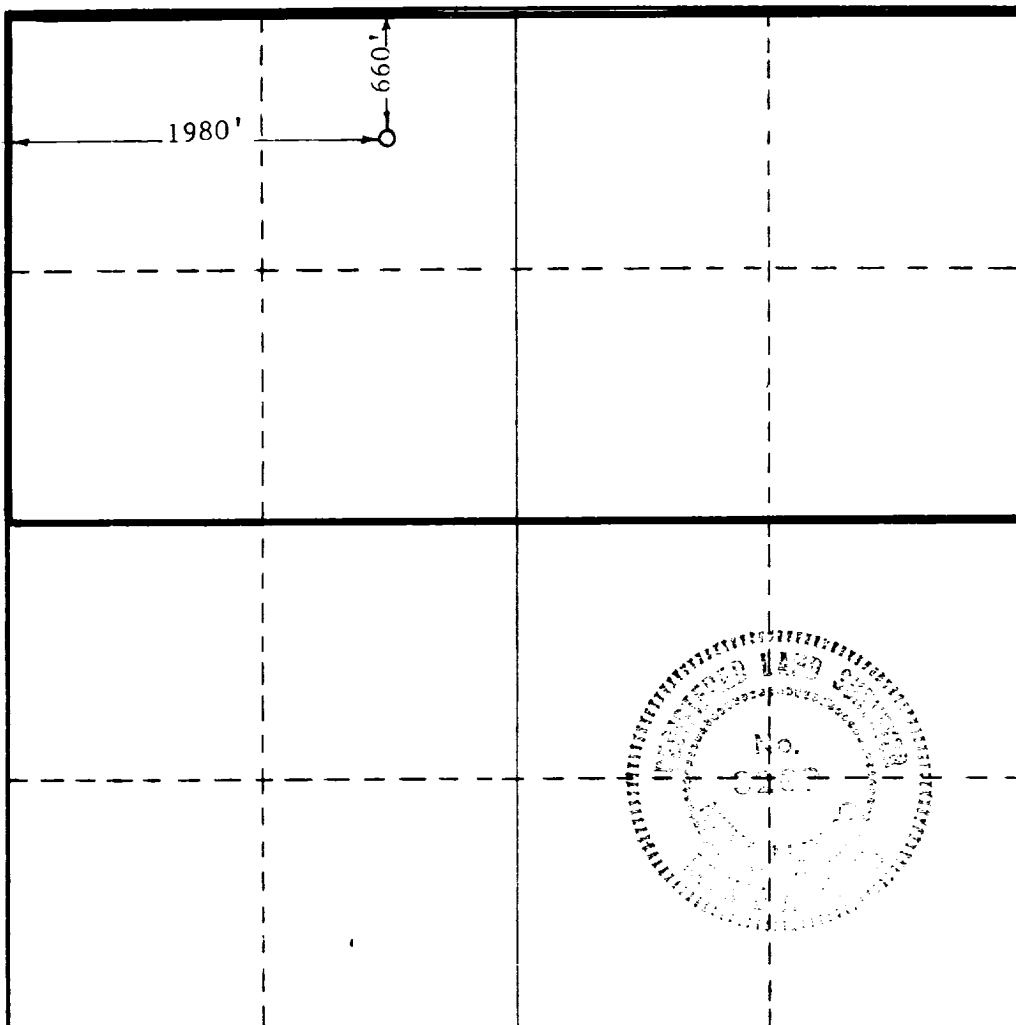
Operator PERRY R. BASS			Lease James Ranch Unit		Well No. 15
Unit Letter C	Section 17	Township 23 South	Range 31 East	County Eddy	
Actual Footage Location of Well:					
660 feet from the North line and		1980 feet from the West line			
Ground Level Elev. 3320'	Producing Formation <i>Monk</i>	Pool <i>Unit 1</i>	Dedicated Acreage: 3.0 Acres		

1. Outline the acreage dedicated to the subject well by colored pencil or hachure marks on the plat below.
2. If more than one lease is dedicated to the well, outline each and identify the ownership thereof (both as to working interest and royalty).
3. If more than one lease of different ownership is dedicated to the well, have the interests of all owners been consolidated by communitization, unitization, force-pooling, etc?

☒ Yes ☐ No If answer is "yes," type of consolidation Unitized

If answer is "no," list the owners and tract descriptions which have actually been consolidated. (Use reverse side of this form if necessary.) _____

No allowable will be assigned to the well until all interests have been consolidated (by communitization, unitization, forced-pooling, or otherwise) or until a non-standard unit, eliminating such interests, has been approved by the Commission.



CERTIFICATION

I hereby certify that the information contained herein is true and complete to the best of my knowledge and belief.

Mark A. Gosch

Name

Mark A. Gosch

Position

Sr. Drilling Engineer

Company

Bass Enterprises Prod. Co

Date

February 11, 1983

I hereby certify that the well location shown on this plat was plotted from field notes of actual surveys made by me or under my supervision, and that the same is true and correct to the best of my knowledge and belief.

Date Surveyed

February 11, 1983

Registered Professional Engineer
and/or Land Surveyor

Ronald J. Eidson

Certificate No. **JOHN W. WEST 676**
PATRICK A. ROMERO 6863
Ronald J. Eidson 3239

0 330 660 990 1320 1650 1980 2310 2640 2970 3300 3630 3960 4290 4620 4950 5280 5610 5940 6270 6600

JAMES RANCH UNIT #15
GEOLOGIC FORMATION TOPS

ESTIMATED KB ELEVATION: 3332'

<u>GEOLOGIC FORMATION TOP</u>	<u>SUBSEA DEPTH</u>	<u>MEASURED DEPTH</u>
Delaware Sand	- 710	4,042
Bone Springs	- 4,550	7,882
Wolfcamp	- 7,850	11,182
Strawn	- 9,520	12,852
Atoka Sand	- 9,820	13,152
Atoka Reef	- 9,900	13,232
Upper Morrow	- 10,443	13,775
Middle Morrow	- 10,710	14,042
Lower Morrow	- 11,200	14,532

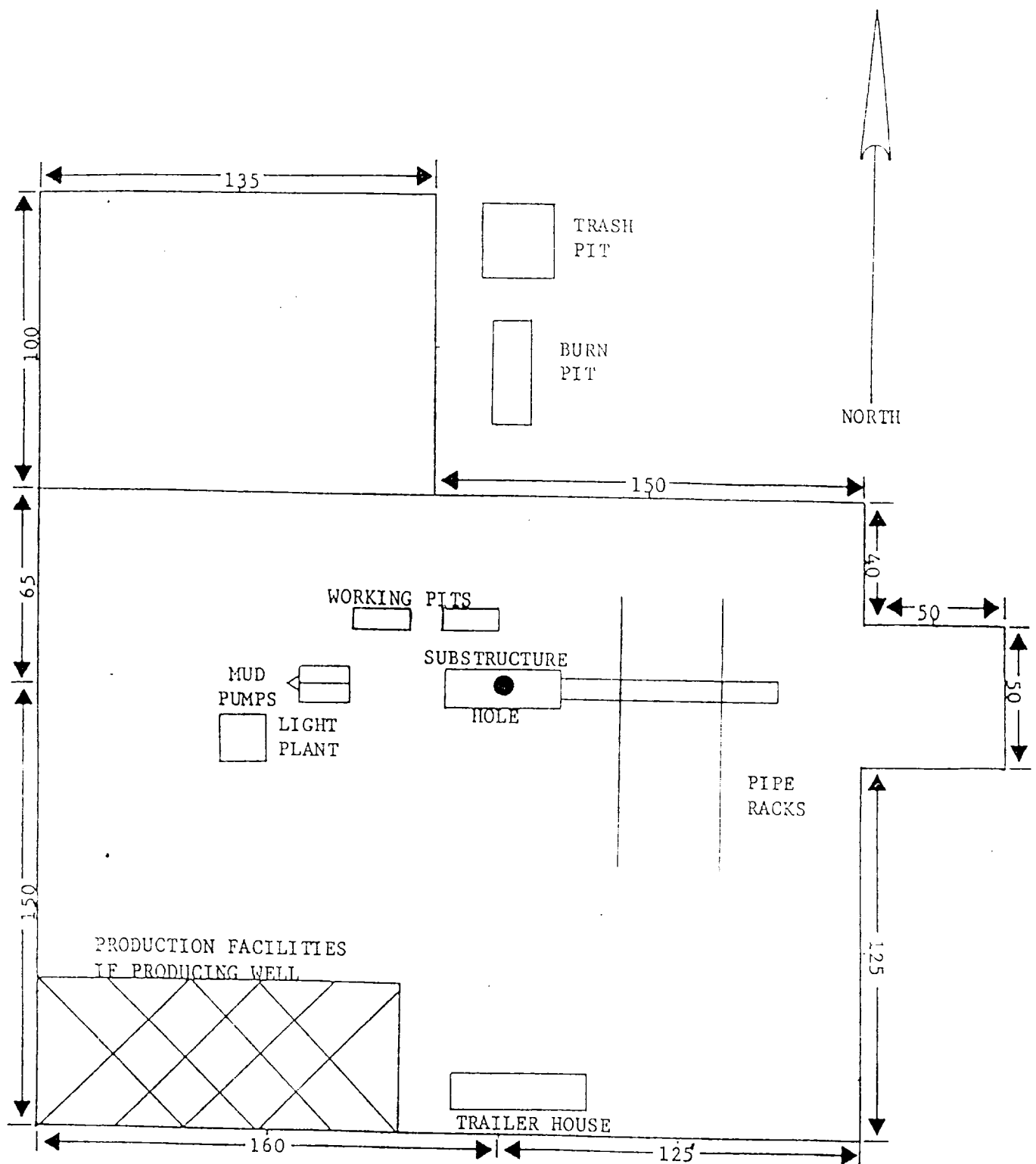


EXHIBIT "B"