

UNITED STATES
DEPARTMENT OF THE INTERIOR
GEOLOGICAL SURVEY

APPLICATION FOR PERMIT TO DRILL, DEEPEN, OR PLUG BACK

1a. TYPE OF WORK

DRILL ☒DEEPEN ☐PLUG BACK ☐

b. TYPE OF WELL

OIL
WELL ☒GAS
WELL ☐OTHER ☐

2. NAME OF OPERATOR

Exxon Corporation

3. ADDRESS OF OPERATOR

P. O. Box 1600, Midland, Texas 79702

4. LOCATION OF WELL (Report location clearly and in accordance with any State requirements.)*

At surface

660' FNL and 660' FEL of Section.

At proposed prod. zone

14. DISTANCE IN MILES AND DIRECTION FROM NEAREST TOWN OR POST OFFICE*

7 Miles North from Carlsbad, New Mexico

15. DISTANCE FROM PROPOSED* LOCATION TO NEAREST PROPERTY OR LEASE LINE, FT.
(Also to nearest drlg. unit line, if any)

660' Lease Line.

660' Drlg. Line

18. DISTANCE FROM PROPOSED LOCATION* TO NEAREST WELL, DRILLING, COMPLETED, OR APPLIED FOR, ON THIS LEASE, FT.

None

16. NO. OF ACRES IN LEASE

240

19. PROPOSED DEPTH

5300'

17. NO. OF ACRES ASSIGNED TO THIS WELL

40

20. ROTARY OR CABLE TOOLS

Rotary

21. ELEVATIONS (Show whether DF, RT, GR, etc.)

3238' GR.

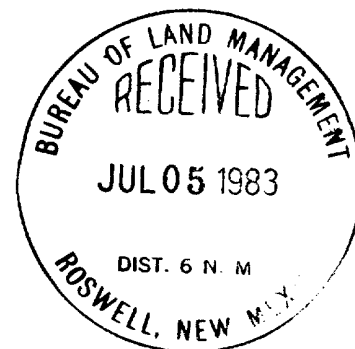
22. APPROX. DATE WORK WILL START*

Third Quarter 1983

23.

PROPOSED CASING AND CEMENTING PROGRAM

SIZE OF HOLE	SIZE OF CASING	WEIGHT PER FOOT	SETTING DEPTH	QUANTITY OF CEMENT
26"	20"	94 #	40'	25 sx Redi Mix Surface
17 1/2"	13 3/8"	54 1/2#	600'	500 sx CIRCULATE
11"	8 5/8"	24 #	2500'	700 sx CIRCULATE
7 7/8"	5 1/2"	14 & 15.5 #	5300'	700 sx CIRCULATE intermediate csg.

BOP's: 13 3/8"/Type II-C/2000 PSI
8 5/8"/Type II-C/2000 PSI

IN ABOVE SPACE DESCRIBE PROPOSED PROGRAM: If proposal is to deepen or plug back, give data on present productive zone and proposed new productive zone. If proposal is to drill or deepen directionally, give pertinent data on subsurface locations and measured and true vertical depths. Give blowout preventer program, if any.

24.

SIGNED

Melba Knippling
Melba Knippling

TITLE

Unit Head

DATE July 1, 1983

(This space for Federal or State office use)

PERMIT NO.

APPROVAL DATE

APPROVED BY

A. D. Lopez

TITLE

DATE

8/30/83

CONDITIONS OF APPROVAL, IF ANY:

*See Instructions On Reverse Side

APPROVAL SUBJECT TO
GENERAL REQUIREMENTS AND
SPECIAL STIPULATIONS
ATTACHED

Instructions

General: This form is designed for submitting proposals to perform certain well operations, as indicated, on all types of lands and leases for appropriate action by either a Federal or a State agency, or both, pursuant to applicable Federal and/or State laws and regulations. Any necessary special instructions concerning the use of this form and the number of copies to be submitted, particularly with regard to local, area, or regional procedures and practices, either are shown below or will be issued by, or may be obtained from, the local Federal and/or State office.

Item 1: If the proposal is to redrill to the same reservoir at a different subsurface location or to a new reservoir, use this form with appropriate notations. Consult applicable State or Federal regulations concerning subsequent work proposals or reports on the well.

Item 4: If there are no applicable State requirements, locations on Federal or Indian land should be described in accordance with Federal requirements. Consult local State or Federal office for specific instructions.

Item 14: Needed only when location of well cannot readily be found by road from the land or lease description. A plat, or plats, separate or on this reverse side, showing the roads to, and the surveyed location of, the well, and any other required information, should be furnished when required by Federal or State agency offices.

Items 15 and 18: If well is to be, or has been directionally drilled, give distances for subsurface location of hole in any present or objective production zone.

Item 22: Consult applicable Federal or State regulations, or appropriate officials, concerning approval of the proposal before operations are started.

Federal Lse. No. _____ All distances must be from the outer boundaries of the Section.

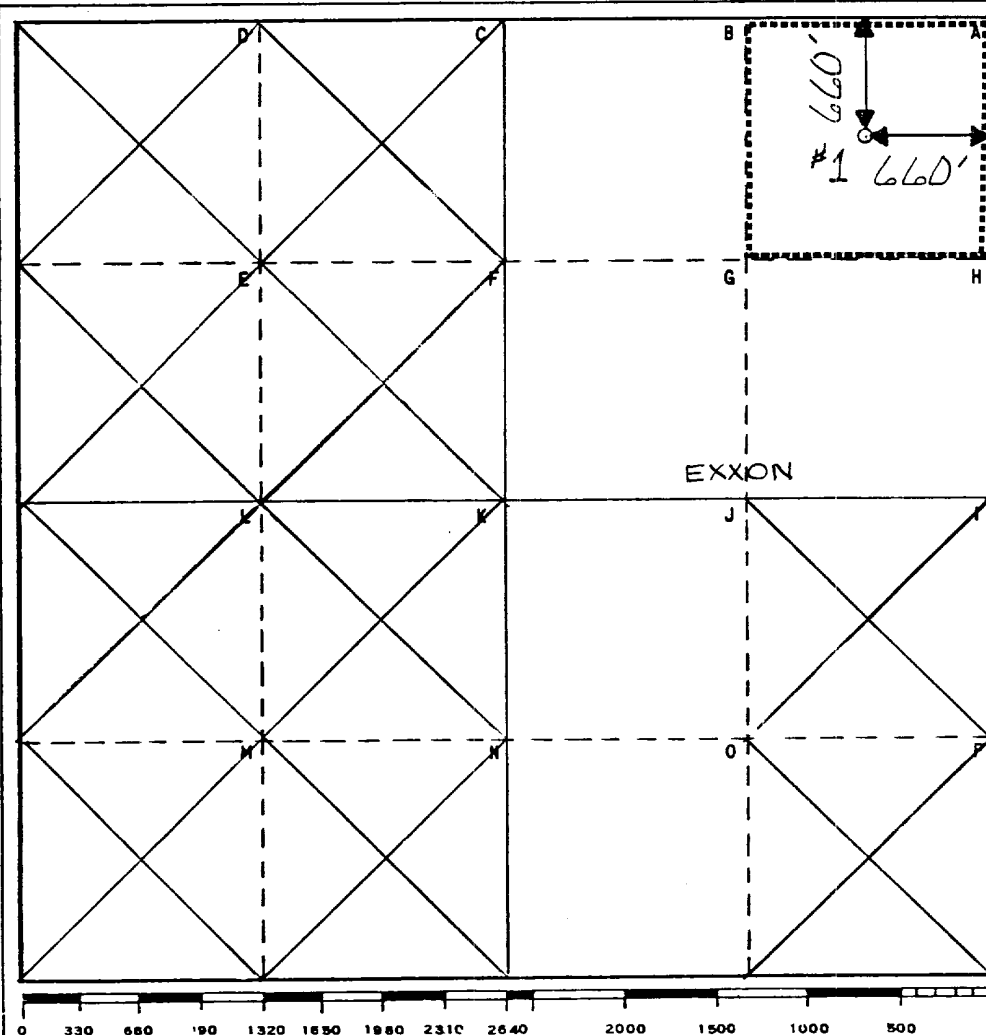
Operator Exxon Corporation			Lease BURTON FLAT FED. "E"		Well No. 1
Unit Letter A	Section 35	Township 20S	Range 28E	County EDDY	
Actual Footage Location of Well: 660 feet from the NORTH line and 660 feet from the EAST line					
Ground Level Elev. 3238	Producing Formation DELAWARE		Pool WILD CAT	Dedicated Acreage: 40 Acres	

1. Outline the acreage dedicated to the subject well by colored pencil or hachure marks on the plat below.
2. If more than one lease is dedicated to the well, outline each and identify the ownership thereof (both as to working interest and royalty).
3. If more than one lease of different ownership is dedicated to the well, have the interests of all owners been consolidated by communitization, unitization, force-pooling, etc?

☐ Yes ☐ No If answer is "yes," type of consolidation _____

If answer is "no," list the owners and tract descriptions which have actually been consolidated. (Use reverse side of this form if necessary.) _____

No allowable will be assigned to the well until all interests have been consolidated (by communitization, unitization, forced-pooling, or otherwise) or until a non-standard unit, eliminating such interests, has been approved by the Commission.



CERTIFICATION

I hereby certify that the information contained herein is true and complete to the best of my knowledge and belief.

Name
Edgar Runkel
Position
UNIT HEAD

Company Exxon Corporation
Box 1600 Midland, Texas

Date
6-21-83

I hereby certify that the location shown on this plat was verified by me under my supervision, and that the same is true and correct to the best of my knowledge and belief.

Date Surveyed
6-14-83

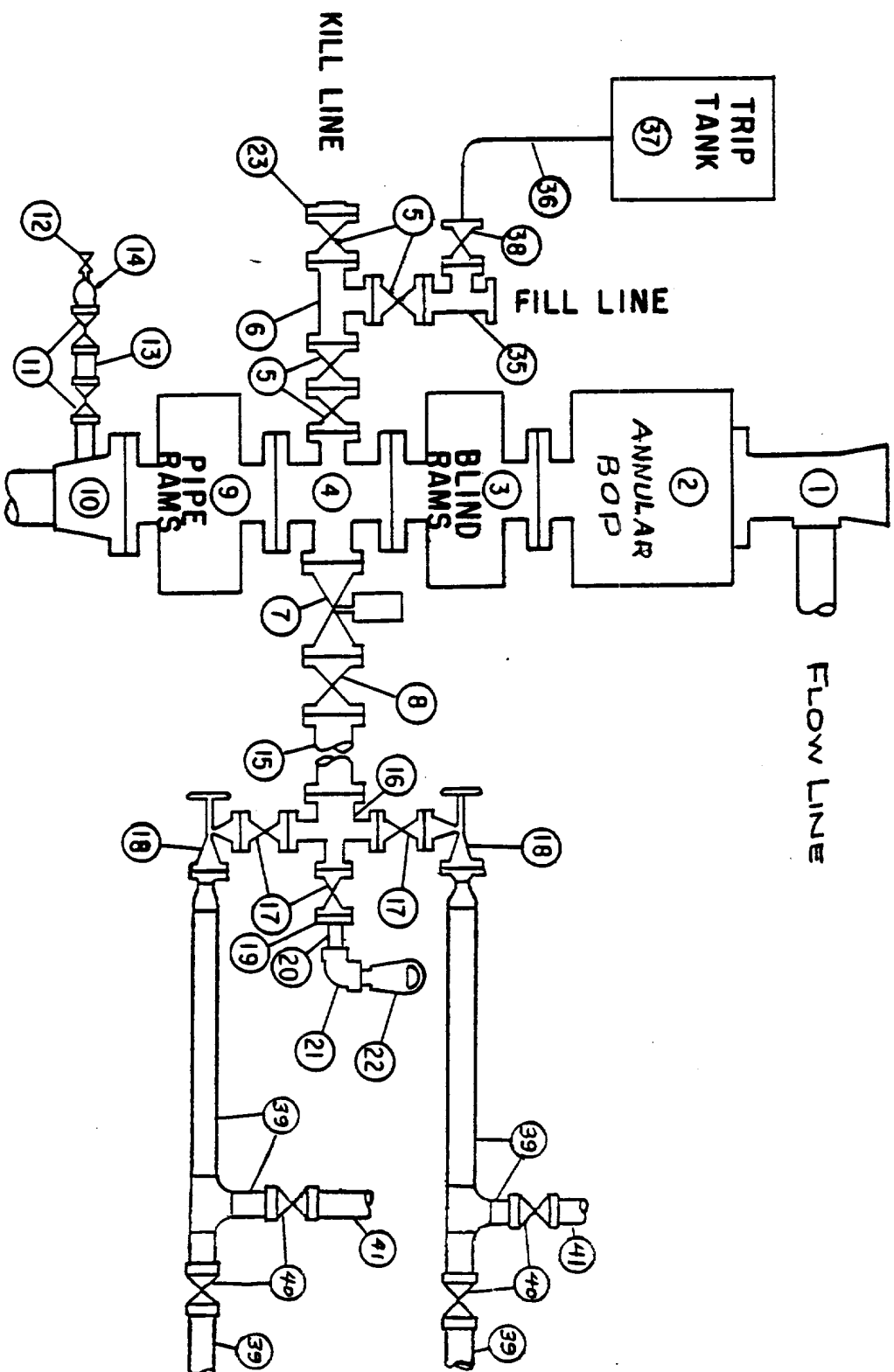
Registered Professional Engineer and/or Land Surveyor

W. J. Runkel
Certificate No.
6157

7 Miles NORTH of CARLSBAD, New Mexico

C.E. Sec. File No. A-8138

MIDLAND DRILLING ORGANIZATION BLOWOUT PREVENTER SPECIFICATION TYPE II - C



BLOWOUT PREVENTER SPECIFICATION
EQUIPMENT DESCRIPTION

TYPE II-C

All equipment should be at least 2000 psi WP or higher unless otherwise specified.

1. Bell nipple.
2. Hydril or Shaffer bag type preventer.
3. Ram type pressure operated blowout preventer with blind rams.
4. Flanged spool with one 4-inch and one 2-inch (minimum) outlet.
5. 2-inch (minimum) flanged plug or gate valve.
6. 2-inch by 2-inch by 2-inch (minimum) flanged tee.
7. 4-inch pressure operated gate valve.
8. 4-inch flanged gate or plug valve.
9. Ram type pressure operated blowout preventer with pipe rams.
10. Flanged type casing head with one side outlet (furnished by Exxon).
11. 2-inch threaded (or flanged) plug or gate valve (furnished by Exxon).
Flanged on 5000# WP, threaded on 3000# WP or less.
12. Needle valve (furnished by Exxon).
13. 2-inch nipple (furnished by Exxon).
14. Tapped bull plug (furnished by Exxon).
15. 4-inch flanged spacer spool.
16. 4-inch by 2-inch by 2-inch by 2-inch flanged cross.
17. 2-inch flanged plug or gate valve.
18. 2-inch flanged adjustable choke.
19. 2-inch threaded flange.
20. 2-inch XXH nipple.
21. 2-inch forged steel 90° Ell.
22. Cameron (or equal.) threaded pressure gage.
23. Threaded flange.
35. 2-inch flanged tee.
36. 3-inch (minimum) hose. (Furnished by Exxon).
37. Trip tank. (Furnished by Exxon).
38. 2-inch flanged plug or gate valve.
39. 2-1/2-inch pipe, 300' to pit, anchored.
40. 2-1/2-inch SE valve.
41. 2-1/2-inch line to steel pit or separator.

NOTES:

1. Items 3, 4 and 9 may be replaced with double ram type preventer with side outlets between the rams.
2. The two valves next to the stack on the fill and kill line to be closed unless drill string is being pulled.
3. Kill line is for emergency use only. This connection shall not be used for filling.
4. Replacement pipe rams and blind rams shall be on location at all times.
5. Only type U, LWS and QRC ram type preventers with secondary seals are acceptable for 5000 psi WP and higher BOP stacks.
6. Type E ram-type BOP's with factory modified side outlets may be used on 3000 psi or lower WP BOP stacks.

10 POINT PLAN
BURTON FLAT FEDERAL C-1
Section 35 , 20S, 28E
Eddy County, New Mexico
June 21, 1983

1. The geologic name of the surface formation: Recent

2. The estimated tops of important geologic markers:

Delaware Mt. Grp. : 2500'
Bone Spring : 4900'

3. The estimated depths at which anticipated water, oil, gas, or other mineral bearing formations are expected to occur:

Deepest FW : 500'
Oil
Bone Spring : 4900'

4. Proposed casing program:

<u>STRING</u>	<u>SIZE</u>	<u>WEIGHT/GRADE</u>	<u>CONDITION</u>	<u>DEPTH INTERVAL</u>
Conductor	20"	94#/H-40	New	0- 40'
Surface	13-3/8"	54.5#/K-55	New	0- 600'
Intermediate	8-5/8"	24#/K-55	New	0-2500'
Production	5-1/2"	14# & 15.5#/K-55	New	0-5300'

5. Minimum specifications for pressure control equipment:

- A. Wellhead equipment - Threaded type, 2000 psi WP for 13-3/8" x 8-5/8" x 5-1/2" casing program with 2-7/8" tubing hanger.
- B. Blowout preventers - Refer to attached drawings and lists of equipment titled "Type II-C" for description of BOP stacks and choke manifold.
- C. BOP control unit - Unit will be hydraulically operated and have at least two control stations.
- D. Testing - Upon installation, the Type II-C BOP's for the 13-3/8" surface casing and the 8-5/8" intermediate casing will be tested to a low pressure (200-300 psi) and to a high pressure of 2000 psi. Casing rams will be tested in a like manner. An operational test of the blowout preventers will be performed on each round trip, (but not more than once each day); the annular and pipe rams preventers will be closed on drill pipe and the blind rams will be closed while pipe is out of the hole.

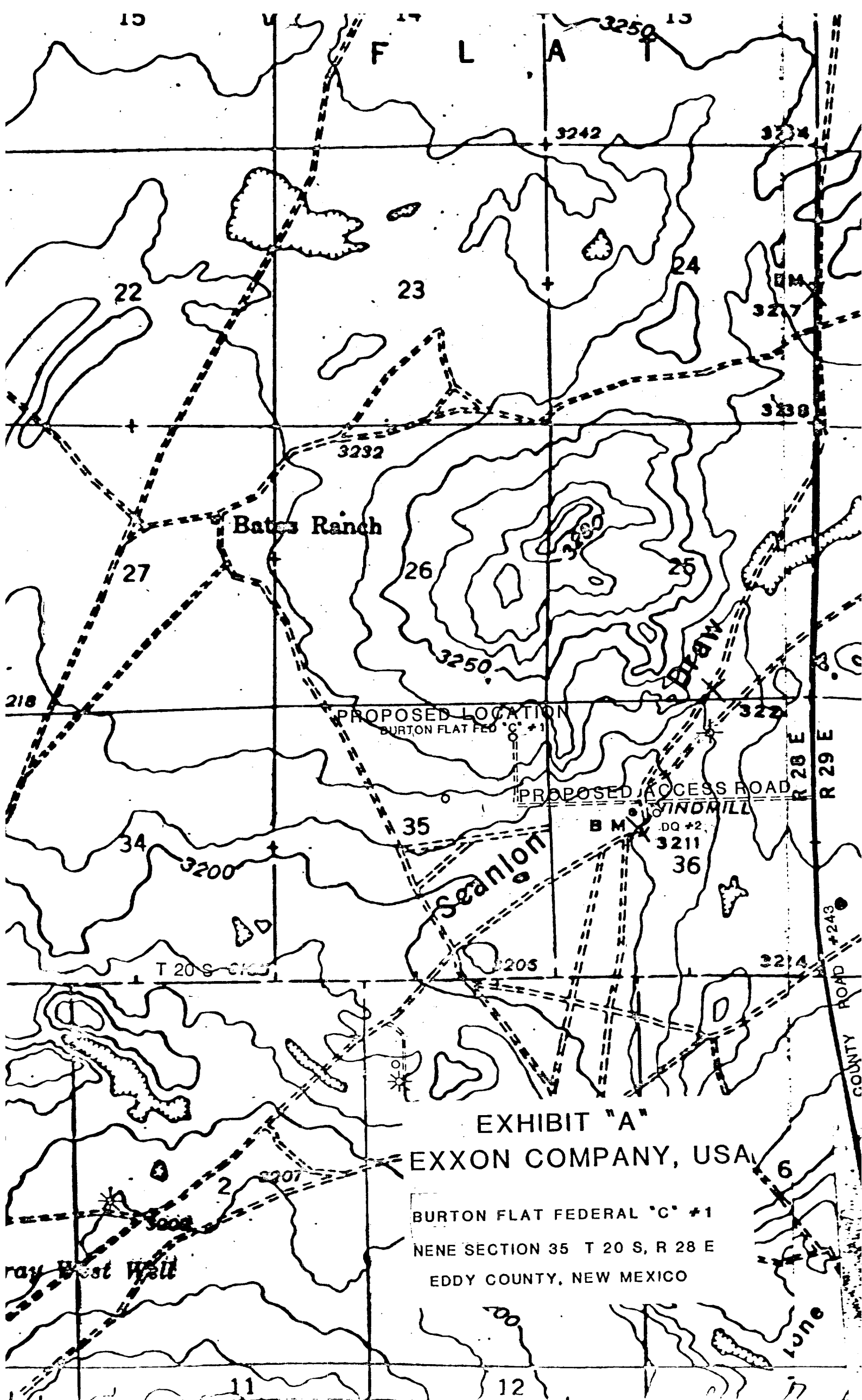
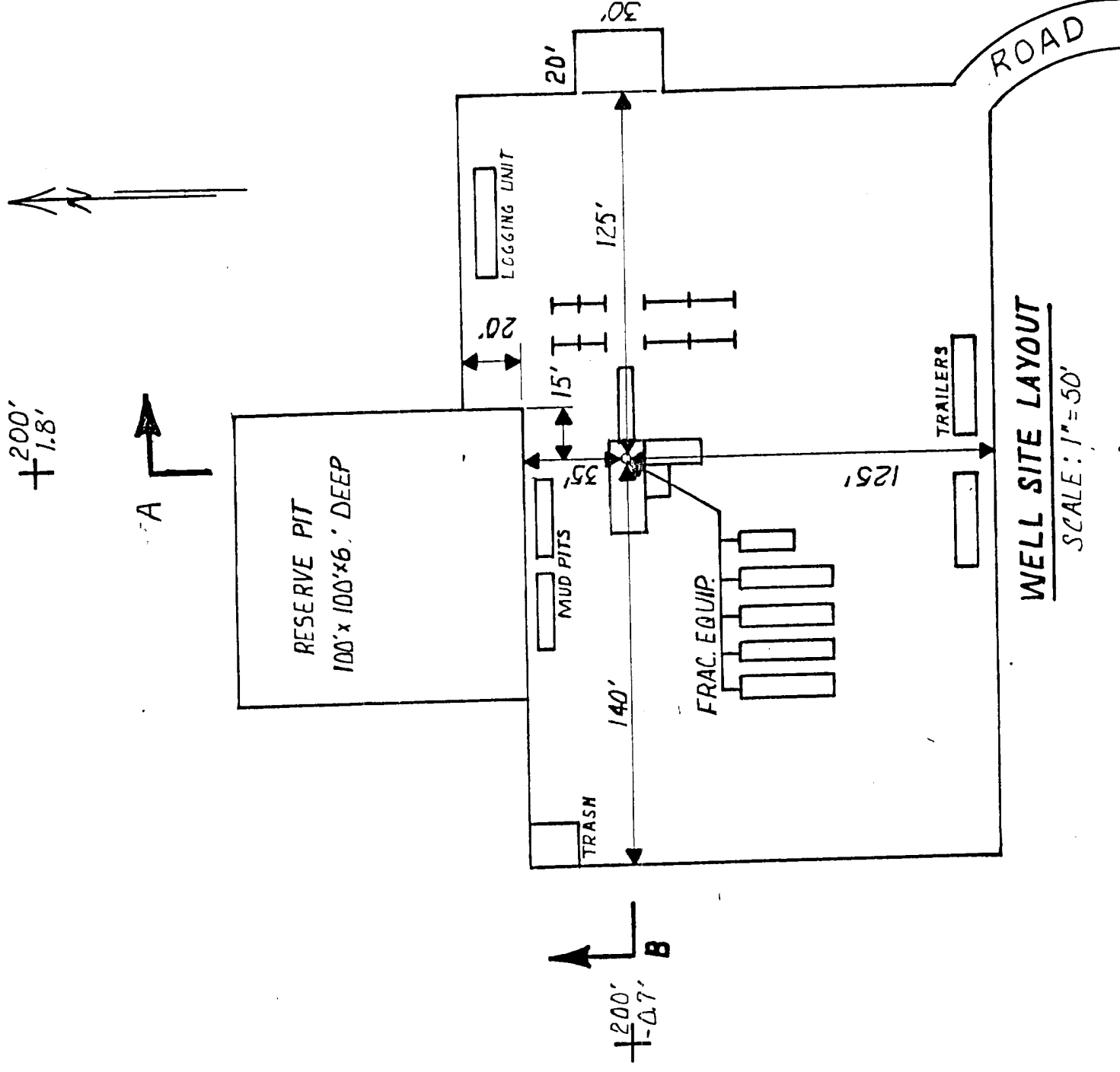
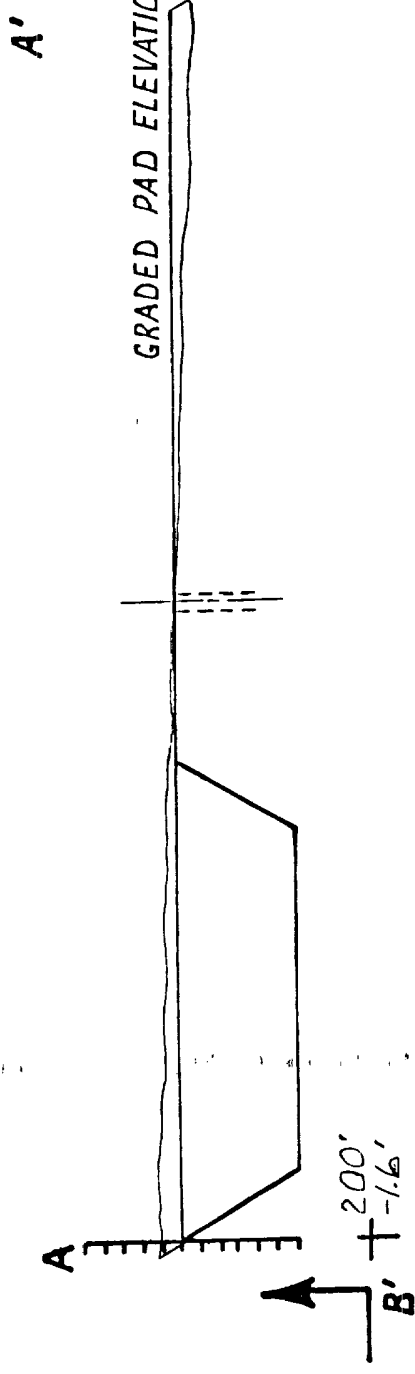
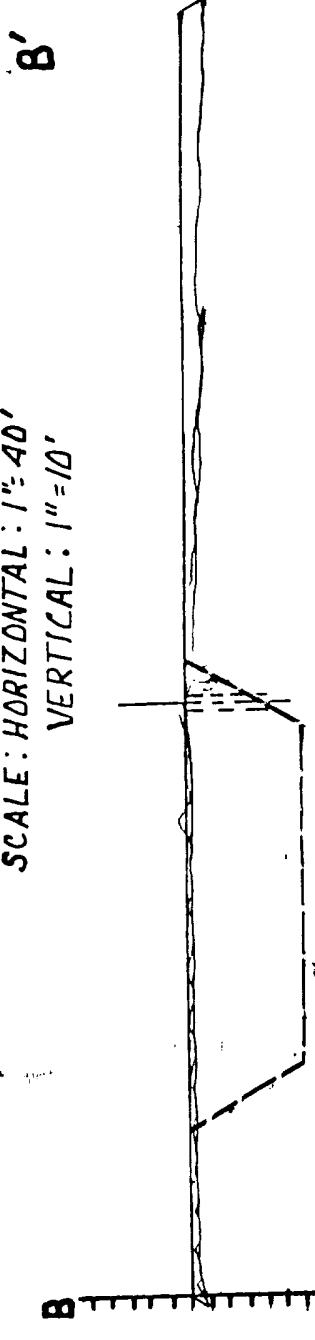


EXHIBIT "A"
EXXON COMPANY, USA

BURTON FLAT FEDERAL "C" #1
NENE SECTION 35 T 20 S, R 28 E
EDDY COUNTY, NEW MEXICO

CROSS SECTIONS

SCALE: HORIZONTAL: 1"=40'
VERTICAL: 1"=10'



WELL SITE LAYOUT

SCALE: 1"=50'

A' +200' -1.4'
V-DOOR EAST

EXXON COMPANY, USA (a division of Exxon Corporation)
PRODUCTION DEPARTMENT
EXHIBIT "B"

BURTON FLAT FEDERAL "C" #1
NE NE SEC 35 T20S R28E
EDDY COUNTY N.M.

DATE 6-22-83
SCALE AS SHOWN

ENGR. SECTION
APPROVED

DRAWN S. HALL
CHECKED

FILE NO.
WB 1846