

**NEW MEXICO OIL CONSERVATION COMMISSION
WELL LOCATION AND ACREAGE DEDICATION PLAT**

Form O-102
Supersedes O-128
Effective 1-1-65

All distances must be from the outer boundaries of the Section

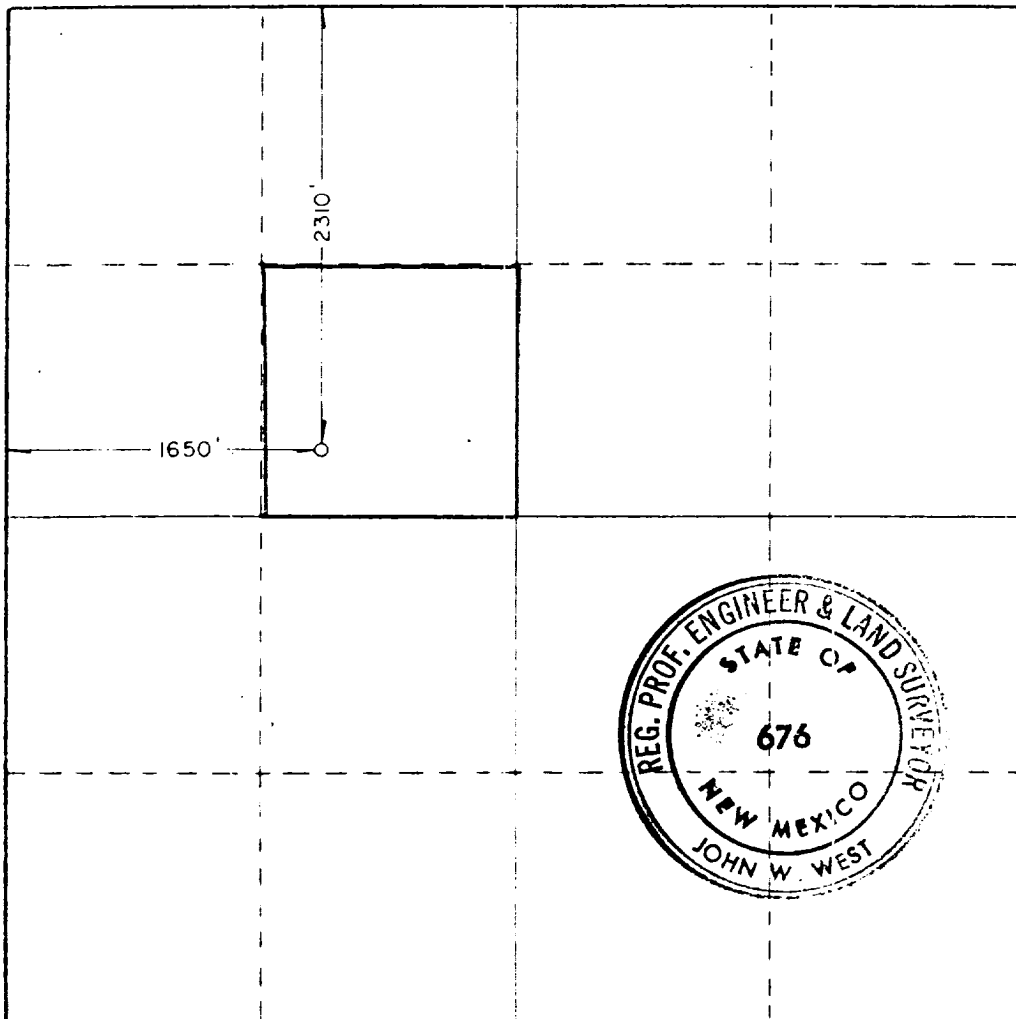
Lessor GULF OIL CORP.			Lessee LITTLEFIELD AB FEDERAL		Well No. 15
Section F	Section 22	Township 18 SOUTH	Range 31 EAST	County EDDY	
2. Well Location (Section 1 Well)					
2310	feet from the NORTH	line and	1650	feet from the WEST	line
Produced Elev. 3648.4	Producing Formation Delaware		Pool <i>Unit</i> Shugart Delaware	Estimated Acreage 40	

1. Outline the acreage dedicated to the subject well by colored pencil or hachure marks on the plat below.
2. If more than one lease is dedicated to the well, outline each and identify the ownership thereof (both as to working interest and royalty).
3. If more than one lease of different ownership is dedicated to the well, have the interests of all owners been consolidated by communitization, unitization, force-pooling, etc?

☐ Yes ☐ No If answer is "yes," type of consolidation _____

If answer is "no," list the owners and tract descriptions which have actually been consolidated. (Use reverse side of this form if necessary.) _____

No allowable will be assigned to the well until all interests have been consolidated (by communitization, unitization, forced-pooling, or otherwise) or until a non-standard unit, eliminating such interests, has been approved by the Commission.



CERTIFICATION

I hereby certify that the information contained herein is true and complete to the best of my knowledge and belief.

R. C. Anderson

Name _____

R. C. Anderson

Position _____

Area Production Manager

Company _____

Gulf Oil Corporation

Date _____

8-10-83

I hereby certify that the well location shown on this plat was plotted from field notes of actual surveys made by me or under my supervision, and that the same is true and correct to the best of my knowledge and belief.

Date Surveyed _____

AUGUST 1, 1983

Registered Professional Engineer and Land Surveyor

Ronald J. Eidson

Certificate No. **JOHN W. WEST** 676

RONALD J. EIDSON, 3239

