

NM OIL CONS. COMMISSION  
Drawer 20  
Artesia, NM  
SUBMIT IN TRIPLICATE\*  
(Other instructions on reverse side)Form approved.  
Budget Bureau No. 42-R1425.

30-015-24660

UNITED STATES  
DEPARTMENT OF THE INTERIOR  
RECEIVED BY  
GEOLOGICAL SURVEY

## APPLICATION FOR PERMIT TO DRILL, DEEPEN, OR PLUG BACK

1a. TYPE OF WORK DRILL <input checked="" type="checkbox"/> DEEPEN <input type="checkbox"/> PLUG BACK <input type="checkbox"/>		1b. TYPE OF WELL OIL WELL <input checked="" type="checkbox"/> GAS WELL <input type="checkbox"/> OTHER <input type="checkbox"/>		SINGLE ZONE <input checked="" type="checkbox"/> MULTIPLE ZONE <input type="checkbox"/>	
2. NAME OF OPERATOR MONSANTO OIL COMPANY					
3. ADDRESS OF OPERATOR First City Center, Ste. 1300 500 West Texas, Midland, Texas 79701					
4. LOCATION OF WELL (Report location clearly and in accordance with any State requirements.) At surface 1980' FSL 1980' FEL Sec. 3-21S-27E At proposed prod. zone Same					
14. DISTANCE IN MILES AND DIRECTION FROM NEAREST TOWN OR POST OFFICE* Approximately 7 miles northwest of Carlsbad, New Mexico					
15. DISTANCE FROM PROPOSED* LOCATION TO NEAREST PROPERTY OR LEASE LINE, FT. (Also to nearest drlg. unit line, if any)		16. NO. OF ACRES IN LEASE		17. NO. OF ACRES ASSIGNED TO THIS WELL	
660'		360		40	
18. DISTANCE FROM PROPOSED LOCATION* TO NEAREST WELL, DRILLING, COMPLETED, OR APPLIED FOR, ON THIS LEASE, FT.		19. PROPOSED DEPTH		20. ROTARY OR CABLE TOOLS	
1320'		5200' Delaware		Rotary	
21. ELEVATIONS (Show whether DF, RT, GR, etc.) 3202' GL				22. APPROX. DATE WORK WILL START* As Soon As Possible	

## PROPOSED CASING AND CEMENTING PROGRAM

SIZE OF HOLE	SIZE OF CASING	WEIGHT PER FOOT	SETTING DEPTH	QUANTITY OF CEMENT
17-1/2"	13-3/8" H-40	48# ST&C	500' ±	500 sx Circulated
11"	8-5/8" J-55	24# ST&C	2500' ±	700 sx Circulated
7-7/8"	5-1/2" K-55	15.5# LT&C	5200' ±	700 sx Sufficient to isolate all water, oil and gas zones.

Propose to drill to approximately 5200' to test Delaware formation. If commercial production is indicated, the well will be completed by cementing production casing, selectively perforating and stimulating. Run 2-7/8" tubing and test well.

See attached "Drilling Data" for drilling and BOP details.

IN ABOVE SPACE DESCRIBE PROPOSED PROGRAM: If proposal is to deepen or plug back, give data on present productive zone and proposed new productive zone. If proposal is to drill or deepen directionally, give pertinent data on subsurface locations and measured and true vertical depths. Give blowout preventer program, if any.

24. SIGNED <u>Jerry W. Long</u> JERRY W. LONG (This space for Federal or State office use)		TITLE <u>Agent</u>	DATE <u>October 18, 1983</u>
PERMIT NO. _____		APPROVAL DATE _____	
APPROVED BY <u>[Signature]</u>		TITLE _____	DATE <u>11/1/83</u>
CONDITIONS OF APPROVAL, IF ANY: _____			

APPROVAL SUBJECT TO  
GENERAL REQUIREMENTS AND  
SPECIAL STIPULATIONS  
ATTACHED

Posted A #9  
2D-12th Book  
11-4-83

Post ID-2  
2-18-96  
Exp Int

NEW MEXICO OIL CONSERVATION COMMISSION  
WELL LOCATION AND ACREAGE DEDICATION PLAT

Form C-102  
Supersedes C-128  
Effective 1-1-65

All distances must be from the outer boundaries of the Section.

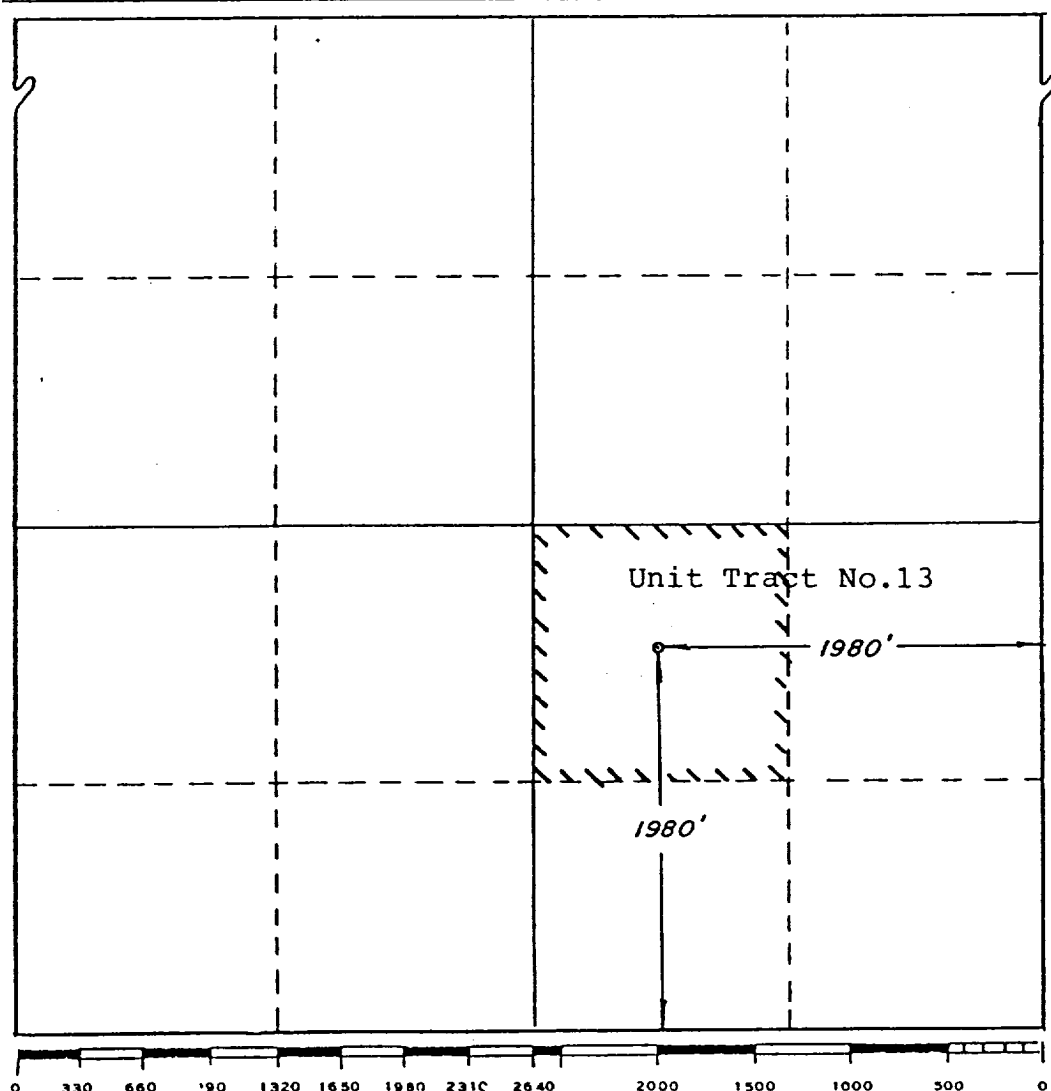
Operator <b>MONSANTO COMPANY</b>			Lease <b>Burton Flat Unit</b>		Well No. <b>22</b>
Unit Letter <b>J</b>	Section <b>3</b>	Township <b>21 South</b>	Range <b>27 East</b>	County <b>Eddy</b>	
Actual Footage Location of Well:					
<b>1980</b> feet from the <b>SOUTH</b>		line and	<b>1980</b> feet from the <b>EAST</b>		line
Ground Level Elev. <b>3202</b>	Producing Formation <b>Delaware</b>	Pool <b>Wildcat</b>	Dedicated Acreage: <b>40</b> Acres		

1. Outline the acreage dedicated to the subject well by colored pencil or hachure marks on the plat below.
2. If more than one lease is dedicated to the well, outline each and identify the ownership thereof (both as to working interest and royalty).
3. If more than one lease of different ownership is dedicated to the well, have the interests of all owners been consolidated by communitization, unitization, force-pooling, etc?

☒ Yes ☐ No If answer is "yes," type of consolidation Unitization

If answer is "no," list the owners and tract descriptions which have actually been consolidated. (Use reverse side of this form if necessary.)

No allowable will be assigned to the well until all interests have been consolidated (by communitization, unitization, forced-pooling, or otherwise) or until a non-standard unit, eliminating such interests, has been approved by the Commission.



CERTIFICATION

I hereby certify that the information contained herein is true and complete to the best of my knowledge and belief.

*Jerry W. Long*  
Name  
**JERRY W. LONG**

Position  
**Agent**

Company  
**MONSANTO OIL COMPANY**

Date  
**October 17, 1983**

I hereby certify that the well location shown on this plat was plotted from field notes of actual surveys made by me or under my supervision, and that the same is true and correct to the best of my knowledge and belief.

**SEPT 19 1983**

Date Surveyed  
**Richard B. Duntiven**  
Registered Professional Engineer  
and/or Land Surveyor

*Richard B. Duntiven*  
Certificate No. **4882**

MONSANTO OIL COMPANY  
 No.22 Burton Flat Deep Unit  
 NW $\frac{1}{4}$ SE $\frac{1}{4}$  Sec.3-21S-27E  
 Eddy County, N.M.

THE BLOWOUT PREVENTER STACK  
 3000 psi Working Pressure

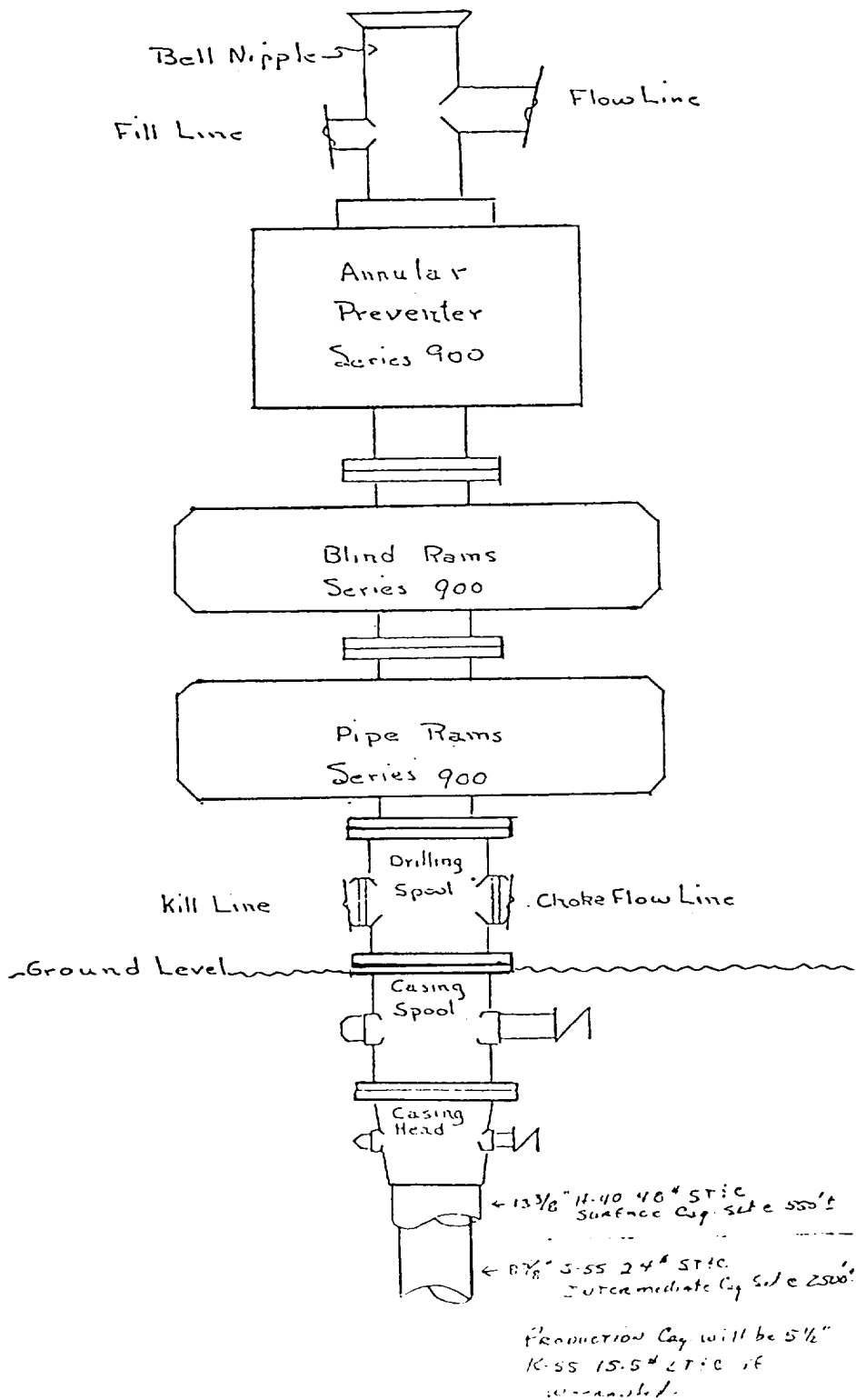


EXHIBIT D

SUPPLEMENTAL DRILLING DATA

MONSANTO OIL COMPANY  
No.22 Burton Flat Deep Unit  
1980'FSL 1980'FEL Sec.3-21S-27E  
Eddy County, N.M.

NM 0560290

The following items supplement Form 9-331C in accordance with instructions contained in NTL-6.

1. SURFACE FORMATION: Recent (Aeolian)

2. ESTIMATED TOPS OF GEOLOGIC MARKERS:

Rustler	100'
Yates	1150'
Delaware	2800'
Bone Spring	5200'

3. ESTIMATED DEPTHS TO WATER, OIL OR GAS FORMATIONS:

Fresh Water	-	Surface to about 200'
Oil and Gas	-	2800' to Total Depth of 5200'±

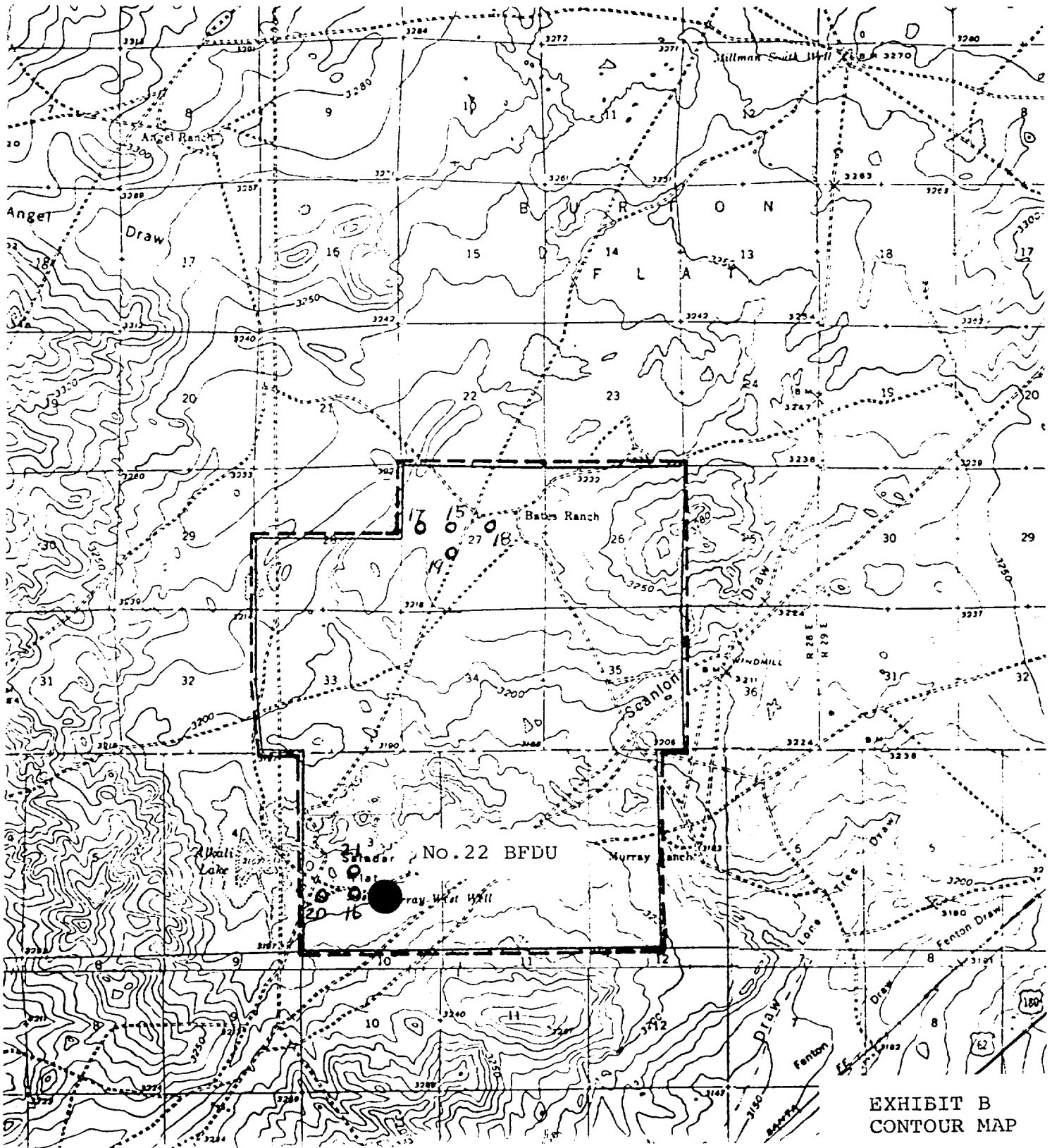
4. PROPOSED CASING PROGRAM:

13-3/8" Casing	-	H-40, 48# ST&C casing will be set to 500'± with cement circulated.
8-5/8" Casing	-	J-55, 24# ST&C casing will be set to 2500'± with cement circulated.
5-1/2" Casing	-	K-55, 15.5# LT&C casing will be set thru the producing zone and cemented to isolate all oil, gas and water zones.

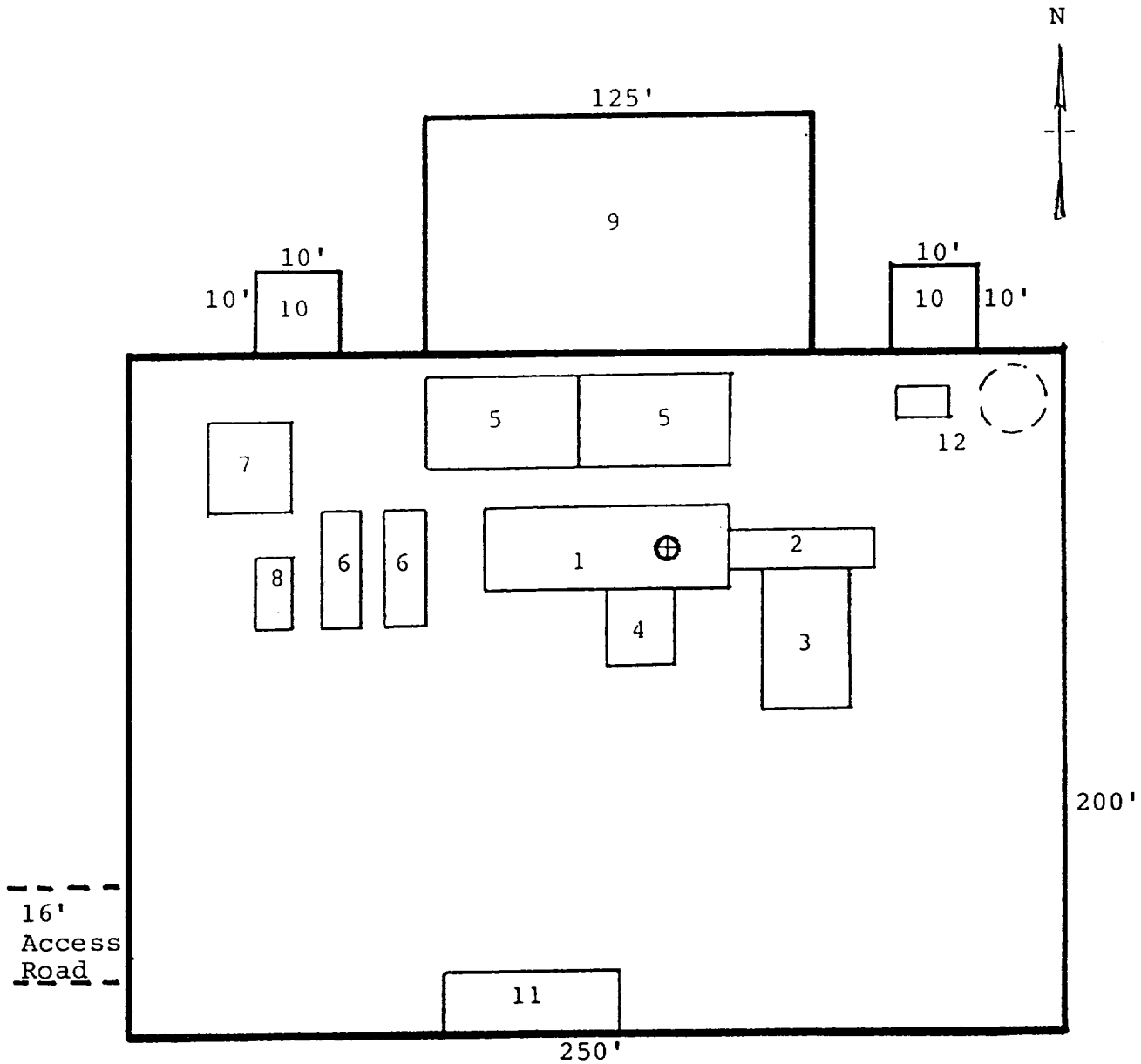
Intermediate and production casing strings will be tested to 1000 psi.

5. PRESSURE CONTROL EQUIPMENT: Pressure control equipment will include a 3000#WP blowout preventer stack with Series 900 annular preventer and Series 900 blind and pipe rams. The BOP stack will include a kill line and a choke manifold tested to 2000 psi. BOP hydraulic controls will be operated at least daily.

MONSANTO OIL COMPANY  
No.22 Burton Flat Deep Unit  
NW¼SE¼ Sec.3-21S-27E  
Eddy County, N.M.



MONSANTO OIL COMPANY  
 No.22 Burton Flat Deep Unit  
 NW¼SE¼ Sec.3-21S-27E  
 Eddy County, N.M.



RIG LAYOUT

- |                 |                           |
|-----------------|---------------------------|
| 1. Substructure | 7. Water Tank             |
| 2. Catwalk      | 8. Light Plant            |
| 3. Pipe Rack    | 9. Reserve Pit            |
| 4. Doghouse     | 10. Trash Pit             |
| 5. Mud Pits     | 11. Trailer House         |
| 6. Mud Pumps    | 12. Production Facilities |