

UNITED STATES  
DEPARTMENT OF THE INTERIOR  
GEOLOGICAL SURVEY

## APPLICATION FOR PERMIT TO DRILL, DEEPEN, OR PLUG BACK

## 1a. TYPE OF WORK

DRILL ☒DEEPEN ☐PLUG BACK ☐

## b. TYPE OF WELL

OIL WELL ☒GAS WELL ☐OTHER ☐

## 2. NAME OF OPERATOR

MONSANTO OIL COMPANY

## 3. ADDRESS OF OPERATOR First City Center, Ste. 1300

500 West Texas, Midland, Texas 79701

## 4. LOCATION OF WELL (Report location clearly and in accordance with any State requirements.)\*

At surface

1980' FSL 660' FWL

Sec. 3-21S-27E

At proposed prod. zone

Same

## 14. DISTANCE IN MILES AND DIRECTION FROM NEAREST TOWN OR POST OFFICE\*

Approximately 7 Miles Northeast of Carlsbad, New Mexico

## 15. DISTANCE FROM PROPOSED\*

LOCATION TO NEAREST  
PROPERTY OR LEASE LINE, FT.  
(Also to nearest drlg. unit line, if any)

660'

## 18. DISTANCE FROM PROPOSED LOCATION\*

TO NEAREST WELL, DRILLING, COMPLETED,  
OR APPLIED FOR, ON THIS LEASE, FT.

1320'

## 19. PROPOSED DEPTH

5200' Delaware

## 21. ELEVATIONS (Show whether DF, RT, GR, etc.)

3196' GL

## 22. APPROX. DATE WORK WILL START\*

As Soon As Possible

## 23.

## PROPOSED CASING AND CEMENTING PROGRAM

SIZE OF HOLE	SIZE OF CASING	WEIGHT PER FOOT	SETTING DEPTH	QUANTITY OF CEMENT
17-1/2"	13-3/8" H-40	48# ST&C	500' ±	500 sx Circulated
11"	8-5/8" J-55	24# ST&C	2500' ±	700 sx Circulated
7-7/8"	5-1/2" K-55	15.5# LT&C	5200' ±	700 sx Sufficient to isolate all water, oil and gas zones.

Propose to drill to approximately 5200' to test Delaware formation. If commercial production is indicated, the well will be completed by cementing production casing, selectively perforating and stimulating. Run 2-7/8' tubing and test well.

See attached "Drilling Data" for drilling and BOP details.

IN ABOVE SPACE DESCRIBE PROPOSED PROGRAM: If proposal is to deepen or plug back, give data on present productive zone and proposed new productive zone. If proposal is to drill or deepen directionally, give pertinent data on subsurface locations and measured and true vertical depths. Give blowout preventer program, if any.

24.

SIGNED

JERRY W. LONG

TITLE Agent

DATE October 17, 1983

(This space for Federal or State office use)

PERMIT NO.

APPROVAL DATE

APPROVED BY

TITLE

DATE 11/1/83

CONDITIONS OF APPROVAL, IF ANY:

APPROVAL SUBJECT TO  
GENERAL REQUIREMENTS AND  
SPECIAL STIPULATIONS  
ATTACHED

NEW MEXICO OIL CONSERVATION COMMISSION  
WELL LOCATION AND ACREAGE DEDICATION PLAT

Form C-102  
Supersedes C-128  
Effective 1-1-65

All distances must be from the outer boundaries of the Section.

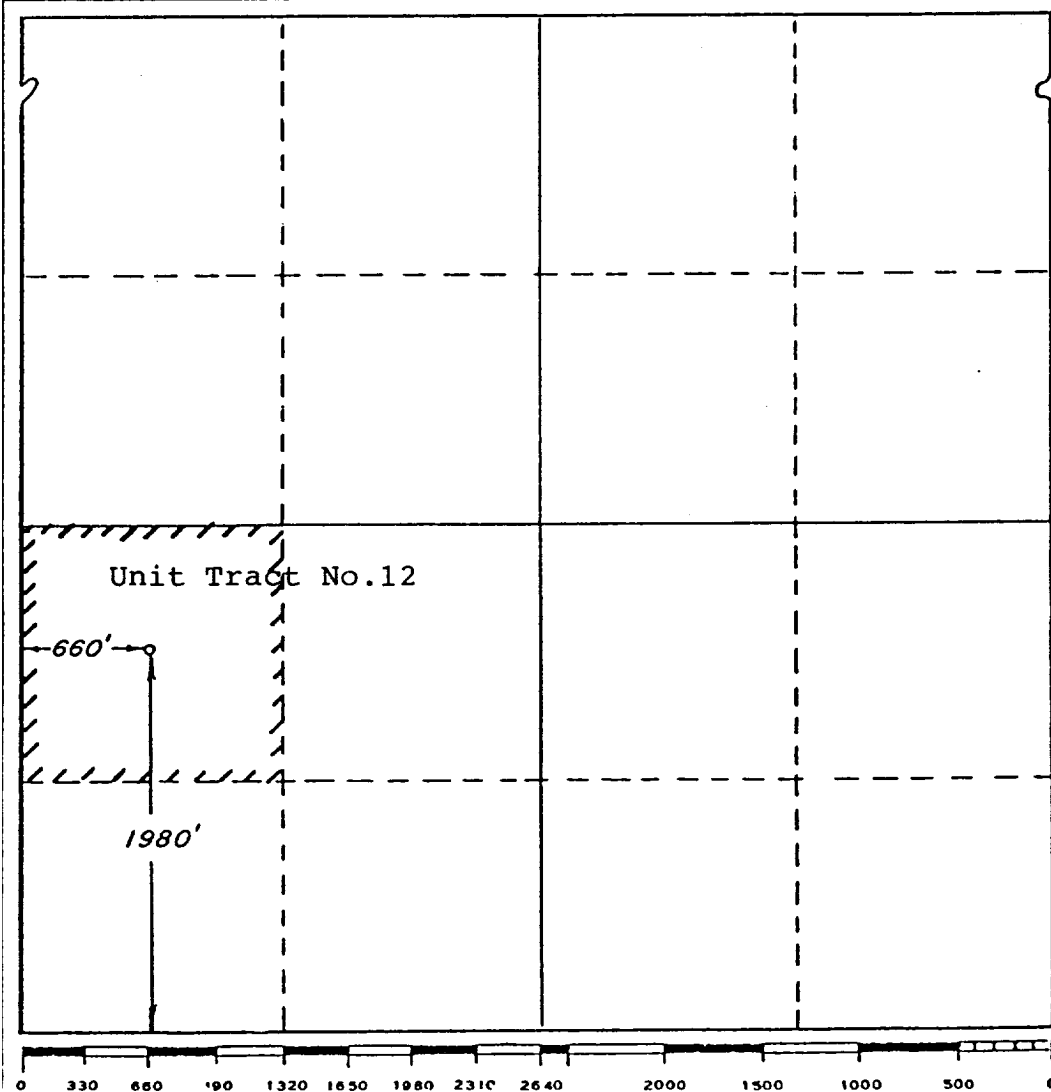
Operator <b>MONSANTO COMPANY</b>		Lease <b>Burton Flat Unit</b>		Well No. <b>20</b>
Unit Letter <b>L</b>	Section <b>3</b>	Township <b>21 South</b>	Range <b>27 East</b>	County <b>Eddy</b>
Actual Footage Location of Well: <b>1980</b> feet from the <b>South</b> line and <b>660</b> feet from the <b>West</b> line				
Ground Level Elev. <b>3196</b>	Producing Formation <b>Delaware</b>	Pool <b>Wildcat Delaware</b>	Dedicated Acreage: <b>40</b> Acres	

1. Outline the acreage dedicated to the subject well by colored pencil or hachure marks on the plat below.
2. If more than one lease is dedicated to the well, outline each and identify the ownership thereof (both as to working interest and royalty).
3. If more than one lease of different ownership is dedicated to the well, have the interests of all owners been consolidated by communitization, unitization, force-pooling, etc?

☒ Yes ☐ No If answer is "yes," type of consolidation Unitization

If answer is "no," list the owners and tract descriptions which have actually been consolidated. (Use reverse side of this form if necessary.)

No allowable will be assigned to the well until all interests have been consolidated (by communitization, unitization, forced-pooling, or otherwise) or until a non-standard unit, eliminating such interests, has been approved by the Commission.



CERTIFICATION

I hereby certify that the information contained herein is true and complete to the best of my knowledge and belief.

*Jerry W. Long*  
Name  
**JERRY W. LONG**

Position  
**Agent**

Company  
**MONSANTO OIL COMPANY**

Date  
**October 17, 1983**

I hereby certify that the well location shown on this plat was plotted from field notes of actual surveys made by me or under my supervision, and that the same is true and correct to the best of my knowledge and belief.

**SEPT. 49, 1983**

Date Surveyed **9-10-83**  
**Richard B. Duniven**

Registered Professional Engineer  
and/or Land Surveyor

*Richard B. Duniven*  
Certificate No.

**4882**

## SUPPLEMENTAL DRILLING DATA

MONSANTO OIL COMPANY  
No.20 Burton Flat Deep Unit  
1980'FSL 660'FWL Sec.3-21S-27E  
Eddy County, N.M.

NM 0560289

The following items supplement Form 9-331C in accordance with instructions contained in NTL-6.

1. SURFACE FORMATION: Recent (Aeolian)

2. ESTIMATED TOPS OF GEOLOGIC MARKERS:

Rustler	100'
Yates	1150'
Delaware	2800'
Bone Spring	5200'

3. ESTIMATED DEPTHS TO WATER, OIL OR GAS FORMATIONS:

Fresh Water	-	Surface to about 200'
Oil and Gas	-	2800' to Total Depth of 5200'±

4. PROPOSED CASING PROGRAM:

13-3/8" Casing	-	H-40, 48# ST&C casing will be set to 500'± with cement circulated.
8-5/8" Casing	-	J-55, 24# ST&C casing will be set to 2500'± with cement circulated.
5-1/2" Casing	-	K-55, 15.5# LT&C casing will be set thru the producing zone and cemented to isolate all oil, gas and water zones.

Intermediate and production casing strings will be tested to 1000 psi.

5. PRESSURE CONTROL EQUIPMENT: Pressure control equipment will include a 3000#WP blowout preventer stack with Series 900 annular preventer and Series 900 blind and pipe rams. The BOP stack will include a kill line and a choke manifold tested to 2000 psi. BOP hydraulic controls will be operated at least daily.

PERTINENT INFORMATION

For

MONSANTO OIL COMPANY  
No.20 Burton Flat Deep Unit  
1980'FSL 660'FWL Sec.3-21S-27E  
Eddy County, N.M.

LOCATED: Approximately 7 miles northeast  
of Carlsbad, New Mexico

FEDERAL LEASE NUMBER: NM 0560289 - Unit Tract No.12

LEASE ISSUED: September 1, 1962  
Held by commitment to Producing Unit

ACRES IN LEASE: 240 Ac.

RECORD LESSEE: Gulf Oil Corporation

BOND COVERAGE: \$150,000 Nationwide Bond

AUTHORITY TO OPERATE: Unit Operator  
Unit Contract No.14-08-0001-12391

SURFACE OWNERSHIP: Federal

GRAZING PERMITTEE: J.D. Spears, P.O. Box 1017  
Carlsbad, New Mexico  
Phone 505-885-6641

POOL RULES: General Oil Spacing  
Cement must be circulated on surface  
and intermediate casing strings since  
the well is within the Carlsbad Under-  
ground Water Basin.

PARTICIPATING AREA: Commercial production from Delaware  
will require an Initial Delaware  
Participating Area for the Unit.

EXHIBITS: A. Road Map  
B. Contour Map  
C. Rig Layout  
D. BOP Diagram  
E. Unit and Well Map

MONSANTO OIL COMPANY  
No.20 Burton Flat Deep Unit  
1980' FSL 660' FWL Sec.3-21S-27E  
Eddy County, N.M.

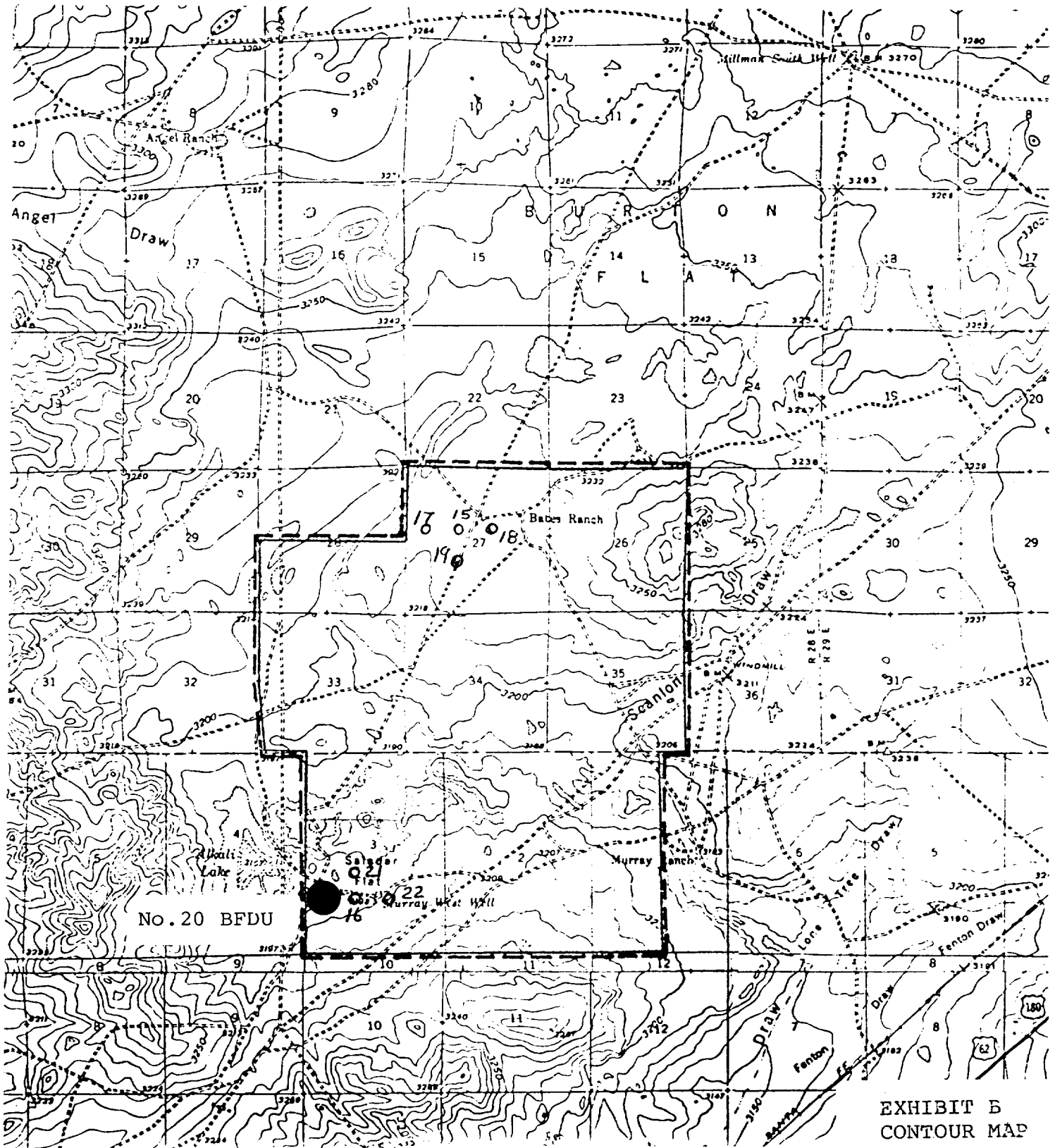
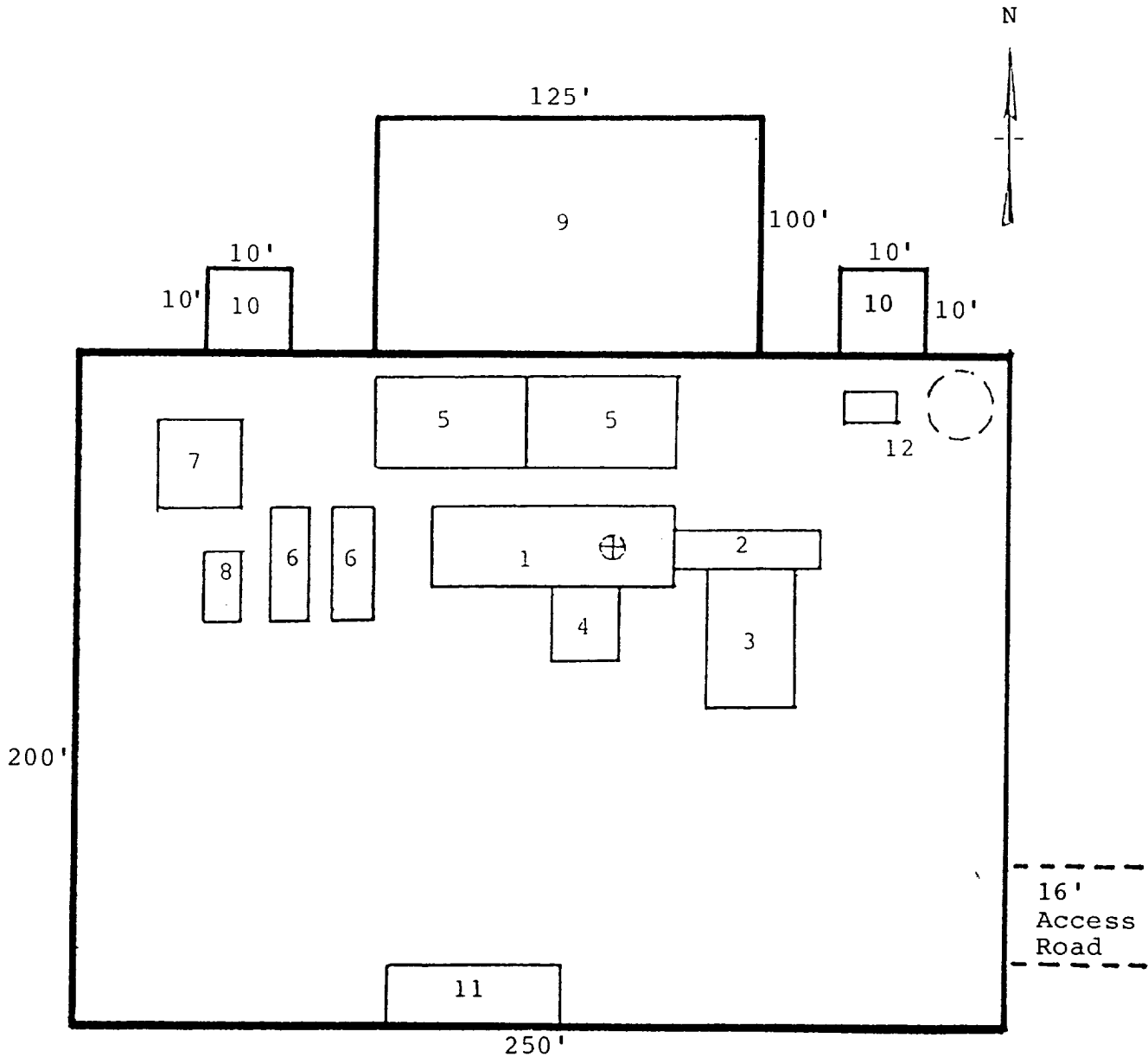


EXHIBIT B  
CONTOUR MAP

MONSANTO OIL COMPANY  
 No.20 Burton Flat Deep Unit  
 1980' FSL 660' FWL Sec.3-21S-27E  
 Eddy County, N.M.



RIG LAYOUT

- |                 |                           |
|-----------------|---------------------------|
| 1. Substructure | 7. Water Tank             |
| 2. Catwalk      | 8. Light Plant            |
| 3. Pipe Rack    | 9. Reserve Pit            |
| 4. Doghouse     | 10. Trash Pit             |
| 5. Mud Pits     | 11. Trailer House         |
| 6. Mud Pumps    | 12. Production Facilities |

MONSANTO OIL COMPANY  
 No. 20 Burton Flat Deep Unit  
 1980' FSL 660' FWL Sec. 3-21S-27E  
 Eddy County, N.M.

THE BLOWOUT PREVENTER STACK  
 3000 psi Working Pressure

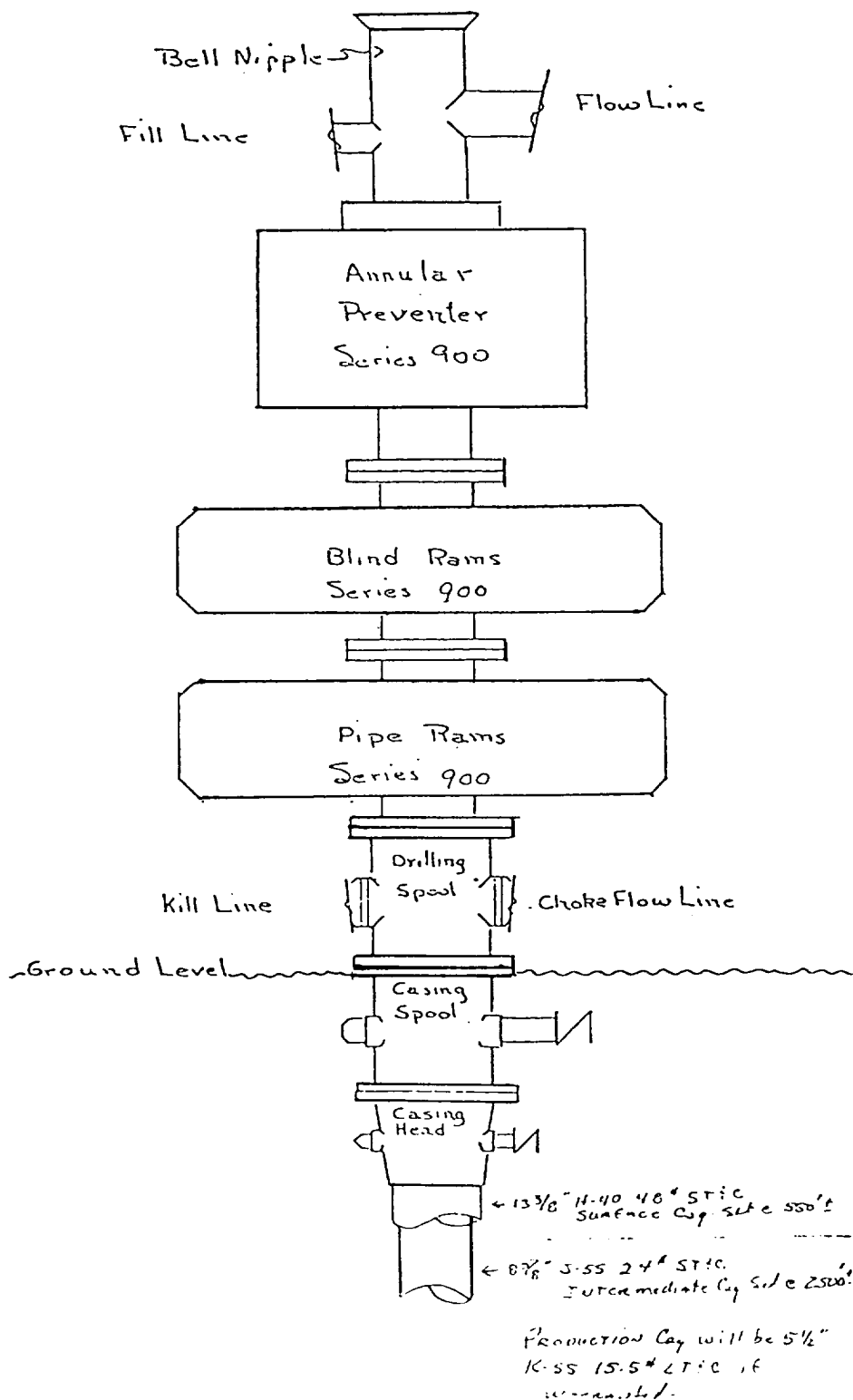


EXHIBIT D