

UNITED STATES  
DEPARTMENT OF THE INTERIOR  
GEOLOGICAL SURVEY

## APPLICATION FOR PERMIT TO DRILL, DEEPEN, OR PLUG BACK

## 1a. TYPE OF WORK

DRILL ☒DEEPEN ☐ NOV 02 1983 PLUG BACK ☐

## b. TYPE OF WELL

OIL  
WELL ☒GAS  
WELL ☐OTHER ☐

## 2. NAME OF OPERATOR

MONSANTO OIL COMPANY

## 3. ADDRESS OF OPERATOR

First City Center, Ste. 1300  
500 West Texas, Midland, Texas 79701

## 4. LOCATION OF WELL (Report location clearly and in accordance with any State requirements.)\*

At surface

3300' FSL 1980' FWL (LOT 14) of IRREGULAR Sec. 3

At proposed prod. zone

Same

## 14. DISTANCE IN MILES AND DIRECTION FROM NEAREST TOWN OR POST OFFICE\*

Approximately 7 miles northeast of Carlsbad, New Mexico

## 15. DISTANCE FROM PROPOSED\*

LOCATION TO NEAREST  
PROPERTY OR LEASE LINE, FT.  
(Also to nearest drlg. unit line, if any)

660'

## 18. DISTANCE FROM PROPOSED LOCATION\*

TO NEAREST WELL, DRILLING, COMPLETED,  
OR APPLIED FOR, ON THIS LEASE, FT.

1320'

## 16. NO. OF ACRES IN LEASE

240

## 19. PROPOSED DEPTH

5200' Delaware

17. NO. OF ACRES ASSIGNED  
TO THIS WELL

40

## 20. ROTARY OR CABLE TOOLS

Rotary

## 21. ELEVATIONS (Show whether DF, RT, GR, etc.)

3197' GL

## 22. APPROX. DATE WORK WILL START\*

As Soon As Possible

## 23. PROPOSED CASING AND CEMENTING PROGRAM

SIZE OF HOLE	SIZE OF CASING	WEIGHT PER FOOT	SETTING DEPTH	QUANTITY OF CEMENT
17-1/2"	13-3/8" H-40	48# ST&C	500' ±	500 sx Circulated
11"	8-5/8" J-55	24# ST&C	2500' ±	700 sx Circulated
7-7/8"	5-1/2" K-55	15.5# LT&C	5200' ±	700 sx Sufficient to isolate all water, oil and gas zones.

Propose to drill to approximately 5200' to test Delaware formation. If commercial production is indicated, the well will be completed by cementing production casing, selectively perforate and stimulate. Run 2-7/8" tubing and test well.

See attached "Drilling Data" for drilling and BOP details.

IN ABOVE SPACE DESCRIBE PROPOSED PROGRAM: If proposal is to deepen or plug back, give data on present productive zone and proposed new productive zone. If proposal is to drill or deepen directionally, give pertinent data on subsurface locations and measured and true vertical depths. Give blowout preventer program, if any.

24.

SIGNED Jerry W. Long TITLE Agent DATE October 18, 1983

(This space for Federal or State office use)

PERMIT NO.

APPROVAL DATE

APPROVED BY CL

TITLE

DATE 11/1/83

CONDITIONS OF APPROVAL, IF ANY:

APPROVAL SUBJECT TO  
GENERAL REQUIREMENTS AND  
SPECIAL STIPULATIONS  
ATTACHED

Ported at 12  
20-10-96  
11-4-93

Port ID-2  
2-10-96

Exp INT

NEW MEXICO OIL CONSERVATION COMMISSION  
WELL LOCATION AND ACREAGE DEDICATION PLAT

Form C-102  
Supersedes C-128  
Effective 1-1-65

All distances must be from the outer boundaries of the Section.

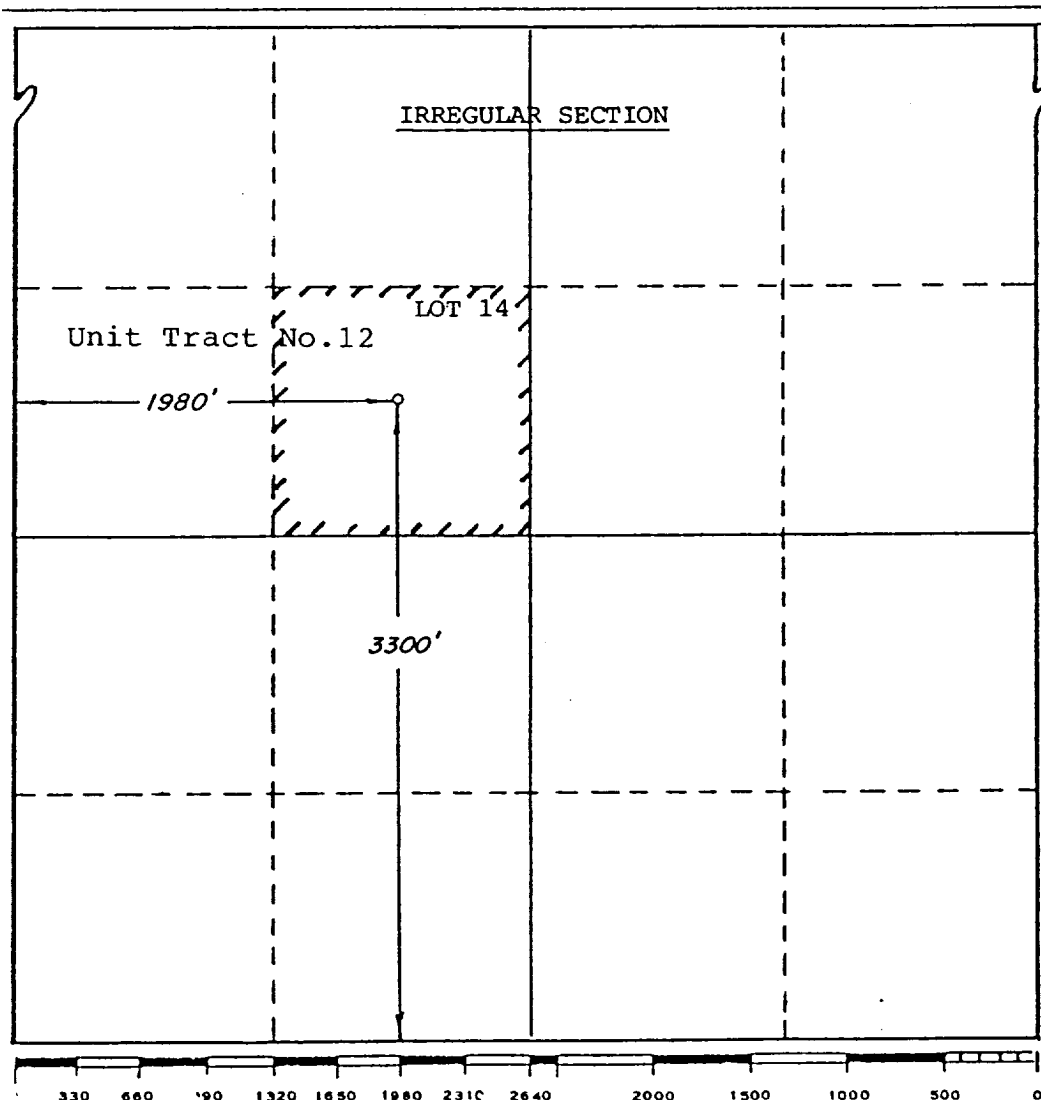
Operator <b>MONSANTO COMPANY</b>		Lease <b>Burton Flat Unit</b>		Well No. <b>21</b>
Unit Letter <b>LOT 14</b>	Section <b>3</b>	Township <b>21 South</b>	Range <b>27 East</b>	County <b>Eddy</b>
Actual Footage Location of Well: <b>3300</b> feet from the <b>South</b> line and <b>1980</b> feet from the <b>West</b> line				
Ground Level Elev. <b>3197</b>	Producing Formation <b>Delaware</b>	Pool <b>Wildcat Delaware</b>	Dedicated Acreage: <b>40</b> Acres	

1. Outline the acreage dedicated to the subject well by colored pencil or hachure marks on the plat below.
2. If more than one lease is dedicated to the well, outline each and identify the ownership thereof (both as to working interest and royalty).
3. If more than one lease of different ownership is dedicated to the well, have the interests of all owners been consolidated by communitization, unitization, force-pooling, etc?

☒ Yes ☐ No If answer is "yes," type of consolidation Unitization

If answer is "no," list the owners and tract descriptions which have actually been consolidated. (Use reverse side of this form if necessary.)

No allowable will be assigned to the well until all interests have been consolidated (by communitization, unitization, forced-pooling, or otherwise) or until a non-standard unit, eliminating such interests, has been approved by the Commission.



CERTIFICATION

I hereby certify that the information contained herein is true and complete to the best of my knowledge and belief.

Name Jerry W. Long  
**JERRY W. LONG**

Position  
**Agent**

Company  
**MONSANTO OIL COMPANY**

Date  
**October 18, 1983**

I hereby certify that the well location shown on this plat was plotted from field notes of actual surveys made by me or under my supervision, and that the same is true and correct to the best of my knowledge and belief.

**SEPT 19 1983**

Date Surveyed  
**Richard B. Nuniven**

Registered Professional Engineer  
and/or Land Surveyor

Richard B. Nuniven  
Certificate No. **4882**

SUPPLEMENTAL DRILLING DATA

MONSANTO OIL COMPANY  
No.21 Burton Flat Deep Unit  
3300'FSL 1980'FWL Sec.3-21S-27E  
Eddy County, N.M.

NM 0560289

The following items supplement Form 9-331C in accordance with instructions contained in NTL-6.

1. SURFACE FORMATION: Recent (Aeolian)

2. ESTIMATED TOPS OF GEOLOGIC MARKERS:

Rustler	100'
Yates	1150'
Delaware	2800'
Bone Spring	5200'

3. ESTIMATED DEPTHS TO WATER, OIL OR GAS FORMATIONS:

Fresh Water - Surface to about 200'  
Oil and Gas - 2800' to Total Depth of 5200'±

4. PROPOSED CASING PROGRAM:

13-3/8" Casing - H-40, 48# ST&C casing will be set to 500'± with cement circulated.

8-5/8" Casing - J-55, 24# ST&C casing will be set to 2500'± with cement circulated.

5-1/2" Casing - K-55, 15.5# LT&C casing will be set thru the producing zone and cemented to isolate all oil, gas and water zones.

Intermediate and production casing strings will be tested to 1000 psi.

5. PRESSURE CONTROL EQUIPMENT: Pressure control equipment will include a 3000#WP blowout preventer stack with Series 900 annular preventer and Series 900 blind and pipe rams. The BOP stack will include a kill line and a choke manifold tested to 2000 psi. BOP hydraulic controls will be operated at least daily.

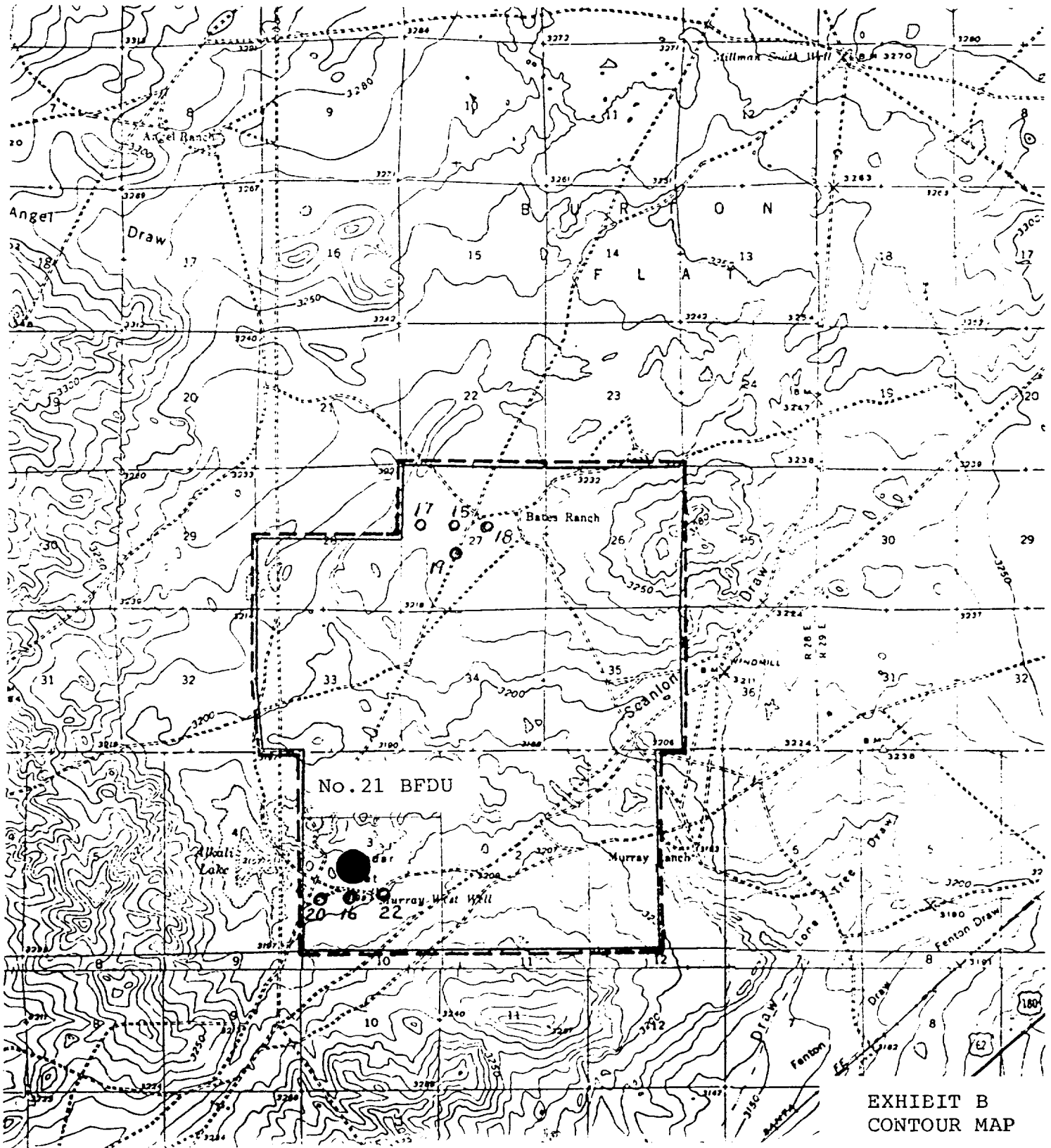
PERTINENT INFORMATION

For

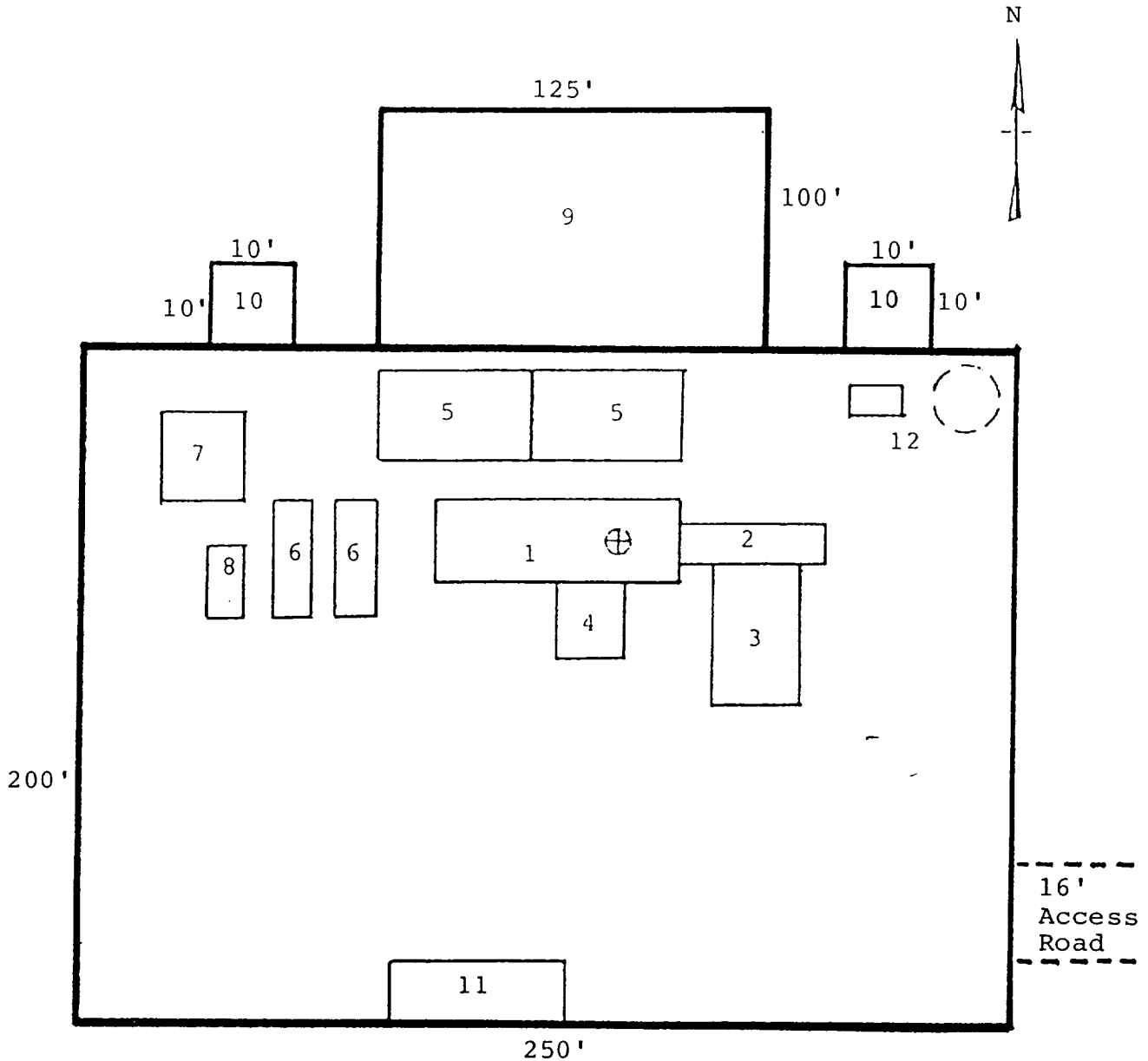
MONSANTO OIL COMPANY  
No.21 Burton Flat Deep Unit  
3300'FSL 1980'FWL Sec.3-21S-27E  
Eddy County, N.M.

<u>LOCATED:</u>	Approximately 7 miles northeast of Carlsbad, New Mexico
<u>FEDERAL LEASE NUMBER:</u>	NM 0560289 - Unit Tract No.12
<u>LEASE ISSUED:</u>	September 1, 1963 Held by commitment to Producing Unit
<u>ACRES IN LEASE:</u>	240 Ac.
<u>RECORD LESSEE:</u>	Gulf Oil Corporation
<u>BOND COVERAGE:</u>	\$150,000 Nationwide Bond
<u>AUTHORITY TO OPERATE:</u>	Unit operator Unit Contract No.14-08-0001-12391
<u>SURFACE OWNERSHIP:</u>	Federal
<u>GRAZING PERMITTEE:</u>	J.D. Spears, P.O. Box 1017 Carlsbad, New Mexico
<u>POOL RULES:</u>	General Oil Spacing Cement must be circulated on surface and intermediate casing strings since the well is within the Carlsbad Under- ground Water Basin.
<u>PARTICIPATING AREA:</u>	Commercial production from Delaware will require an Initial Delaware Par- ticipating Area for the Unit.
<u>EXHIBITS:</u>	A. Road Map B. Contour Map C. Rig Layout D. BOP Diagram E. Unit and Well Map

MONSANTO OIL COMPANY  
No.21 Burton Flat Deep Unit  
3300'FSL 1980'FWL Sec.3-21S-27E  
Eddy County, N.M.



MONSANTO OIL COMPANY  
 No.21 Burton Flat Deep Unit  
 3300'FSL 1980'FWL Sec.3-21S-27E  
 Eddy County, N.M.

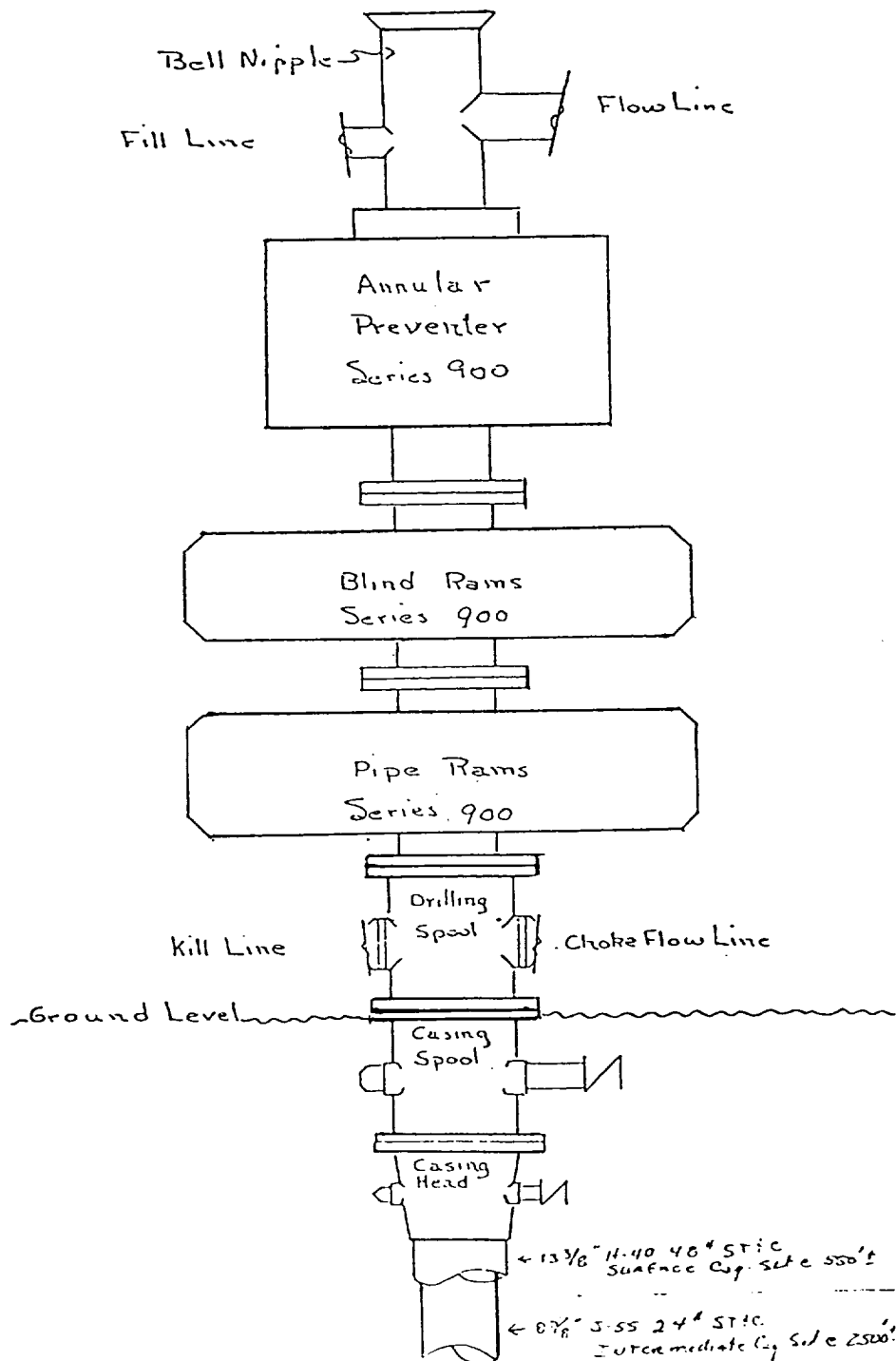


RIG LAYOUT

- |                 |                           |
|-----------------|---------------------------|
| 1. Substructure | 7. Water Tank             |
| 2. Catwalk      | 8. Light Plant            |
| 3. Pipe Rack    | 9. Reserve Pit            |
| 4. Doghouse     | 10. Trash Pit             |
| 5. Mud Pits     | 11. Trailer House         |
| 6. Mud Pumps    | 12. Production Facilities |

MONSANTO OIL COMPANY  
 No. 21 Burton Flat Deep Unit  
 3300' FSL 1980' FWL Sec. 3-21S-27E  
 Eddy County, N.M.

THE BLOWOUT PREVENTER STACK  
 3000 psi Working Pressure



Production Cg. will be 5 1/2"  
 10-55 15.5# 27°C if  
 w--an-sh-

EXHIBIT D