

C/37



United States Department of the Interior

BUREAU OF LAND MANAGEMENT
P.O. BOX 1397
ROSWELL, NEW MEXICO 88201

IN REPLY
REFER TO: NM-19848

November 3, 1983 NOV 08 1983

RECEIVED BY

O. C. D.
ARTESIA, OFFICE

Exxon Corporation
P.O. Box 1600
Midland, Texas 79702

Dear Sir:

Your application for Permit to Drill well No. 3 Blakemore Estate Federal in the SE 1/4 sec. 34, T. 23 S., R. 29 E., Eddy County, New Mexico, lease NM-19848, to a depth of 7,000 feet to test the Bone Spring formation in the oil-potash area, is hereby approved as amended by stipulations attached to the application.

One copy of the application is returned herewith. Please notify the Bureau of Land Management office checked on the attached special stipulation, in sufficient time for a representative to witness all cementing operations.

Sincerely yours,

'Orig. Sgd.' Earl R. Cunningham
District Manager

Enclosure

cc:

NMOCB (2)

BLM - Carlsbad

DM - Mining (2)

Roswell District Files

BLM - Carlsbad (John Wade)

SCR

Form 9-331 C
(May 1963)
NM OIL & GAS COMMISSION
Dorcas, NM
Artesia, NM

UNITED STATES
DEPARTMENT OF THE INTERIOR
GEOLOGICAL SURVEY

RECEIVED BY
SUBMIT IN TRIPLICATE
(Other instructions on
reverse side)
NOV 08 1983
O. C. D.

Form approved.
Budget Bureau No. 42-B1425.

30-015-24668

APPLICATION FOR PERMIT TO DRILL, DEEPEN, OR PLUG BACK

1a. TYPE OF WORK
DRILL ☒ DEEPEN ☐ PLUG BACK ☐

b. TYPE OF WELL
OIL WELL ☒ GAS WELL ☐ OTHER ☐

2. NAME OF OPERATOR
Exxon Corporation

3. ADDRESS OF OPERATOR
P.O. Box 1600, Midland, TX 79702

4. LOCATION OF WELL (Report location clearly and in accordance with any State requirements.)
At surface 1980' FNL & 2080' FWL of Section
At proposed prod. zone 2130'

14. DISTANCE IN MILES AND DIRECTION FROM NEAREST TOWN OR POST OFFICE
7.5 miles SE from Loving

15. DISTANCE FROM PROPOSED* 1980' lse line
LOCATION TO NEAREST PROPERTY OR LEASE LINE, FT.
(Also to nearest drlg. unit line, if any) 560' drlg. line

16. NO. OF ACRES IN LEASE
2080

17. NO. OF ACRES ASSIGNED TO THIS WELL
40

18. DISTANCE FROM PROPOSED LOCATION* TO NEAREST WELL, DRILLING, COMPLETED, OR APPLIED FOR, ON THIS LEASE, FT.
1.1 miles to #3 7000'

19. PROPOSED DEPTH
7000'

20. ROTARY OR CABLE TOOLS
Rotary

21. ELEVATIONS (Show whether DF, RT, GR, etc.)
3069' GR

22. APPROX. DATE WORK WILL START*
8-30-83

5. LEASE DESIGNATION AND SERIAL NO.
NM-19848

6. IF INDIAN, ALLOTTEE OR TRIBE NAME

7. UNIT AGREEMENT NAME

8. FARM OR LEASE NAME
Blakemore Estate Federal

9. WELL NO.
3

10. FIELD AND POOL, OR WILDCAT
Wildcat - Rose Spring

11. SEC., T., R., M., OR BLK. AND SURVEY OR AREA
Sec. 34-23S-29E

12. COUNTY OR PARISH
Eddy

13. STATE
New Mexico

BUREAU OF LAND MANAGEMENT
RECEIVED
AUG 12 1983
DIST. 6 N. M.
ROSWELL, NEW MEXICO

23. PROPOSED CASING AND CEMENTING PROGRAM

SIZE OF HOLE	SIZE OF CASING	WEIGHT PER FOOT	SETTING DEPTH	QUANTITY OF CEMENT
17 1/2"	13 3/8"	54.5#	600'	500 sx CIRCULATE
11 or 12 1/4"	8 5/8"	24#	2900'	1000 sx CIRCULATE
7 7/8"	5 1/2"	17#	7000'	1700 sx

Posted to BS
FD-1 of Back
11-11-83

IN ABOVE SPACE DESCRIBE PROPOSED PROGRAM: If proposal is to deepen or plug back, give data on present productive zone and proposed new productive zone. If proposal is to drill or deepen directionally, give pertinent data on subsurface locations and measured and true vertical depths. Give blowout preventer program, if any.

24. SIGNED Melba Knippling TITLE Unit Head DATE August 9, 1983

(This space for Federal or State office use)

PERMIT NO. _____ APPROVAL DATE _____

APPROVED BY _____ TITLE _____ DATE _____

CONDITIONS OF APPROVAL, IF ANY:

APPLICATION EXPIRED

APPROVAL SUBJECT TO
GENERAL REQUIREMENTS AND
SPECIAL STIPULATIONS
ATTACHED

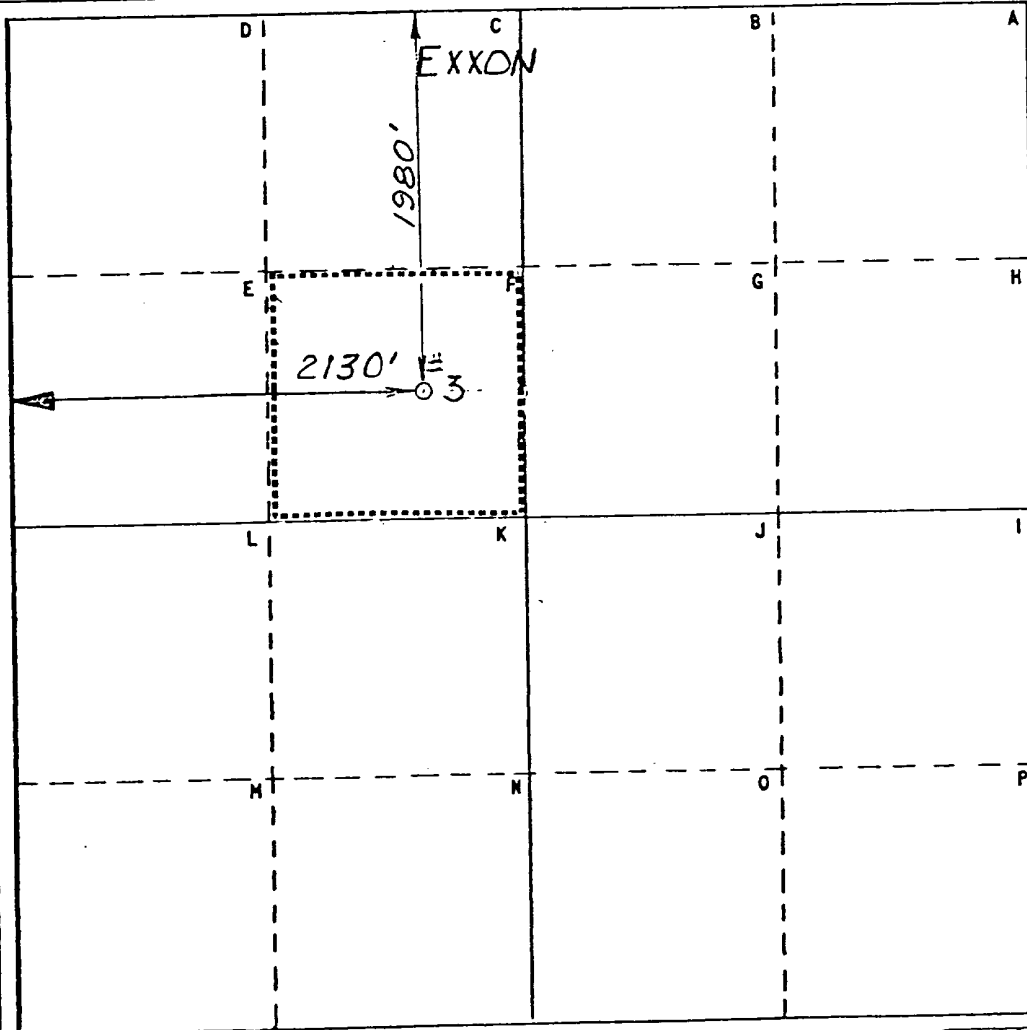
Operator Exxon Corporation			Lease BLAKEMORE ESTATE FED.			Well No. 3		
Unit Letter F	Section 34	Township 23S	Range 29E	County EDDY				
Actual Footage Location of Well: 1980 feet from the NORTH line and 2130 feet from the WEST line								
Ground Level Elev: 3069		Producing Formation BONE SPRING		Pool WILDCAT		Dedicated Acreage: 40 Acres		

1. Outline the acreage dedicated to the subject well by colored pencil or hachure marks on the plat below.
2. If more than one lease is dedicated to the well, outline each and identify the ownership thereof (both as to working interest and royalty).
3. If more than one lease of different ownership is dedicated to the well, have the interests of all owners been consolidated by communitization, unitization, force-pooling, etc?

☐ Yes ☐ No If answer is "yes," type of consolidation _____

If answer is "no," list the owners and tract descriptions which have actually been consolidated. (Use reverse side of this form if necessary.) _____

No allowable will be assigned to the well until all interests have been consolidated (by communitization, unitization, forced-pooling, or otherwise) or until a non-standard unit, eliminating such interests, has been approved by the Commission.



CERTIFICATION

I hereby certify that the information contained herein is true and complete to the best of my knowledge and belief.

Name
Melba Kripling

Position
UNIT HEAD

Company Exxon Corporation
Box 1600 Midland, Texas

Date

I hereby certify that the well location shown on this plat is based on field notes of actual surveys made by me or under my supervision and that the same is true and correct to the best of my knowledge and belief.

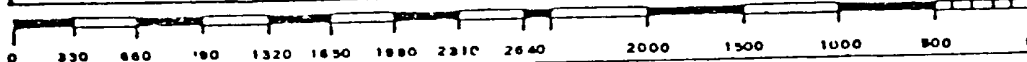
Date Surveyed
10-27-83

Registered Professional Engineer
and/or Land Surveyor

John Wallis

Certificate No.

8699



10 POINT PLAN
Blakemore State Federal #3
Section 34, T23S, T29E
Eddy County, New Mexico
July 18, 1983

1. The geologic name of the surface formation: Recent

2. The estimated tops of important geologic markers:

Delaware Mt. Grp. : 2900'
Bone Spring : 6600'

3. The estimated depths at which anticipated water, oil, gas, or other mineral bearing formations are expected to occur:

Deepest FW : 500'
Oil
Bone Spring : 6600'

4. Proposed casing program:

<u>STRING</u>	<u>SIZE</u>	<u>WEIGHT/GRADE</u>	<u>CONDITION</u>	<u>DEPTH INTERVAL</u>
Conductor	20"	94#/H-40	New	0- 40'
Surface	13-3/8"	54.5#/K-55	New	0- 600'
Intermediate	8-5/8"	32#/K-55	New	0-2900'
Production	5-1/2"	17#/K-55	New	0-7000'

5. Minimum specifications for pressure control equipment:

A. Wellhead equipment - Threaded type, 2000 psi WP for 13-3/8" x 8-5/8" x 5-1/2" casing program with 2-7/8" tubing hanger.

B. Blowout preventers - Refer to attached drawings and lists of equipment titled "Type II-C" for description of BOP stacks and choke manifold.

C. BOP control unit - Unit will be hydraulically operated and have at least two control stations.

D. Testing - Upon installation, the Type II-C BOP's for the 13-3/8" surface casing and the 8-5/8" intermediate casing will be tested to a low pressure (200-300 psi) and to a high pressure of 2000 psi. Casing rams will be body tested in a like manner. An operational test of the blowout preventers will be performed on each round trip, (but not more than once each day); the annular and pipe rams preventers will be closed on drill pipe and the blind rams will be closed while pipe is out of the hole.

BLOWOUT PREVENTER SPECIFICATION
EQUIPMENT DESCRIPTION

TYPE II-C

All equipment should be at least 2000 psi WP or higher unless otherwise specified.

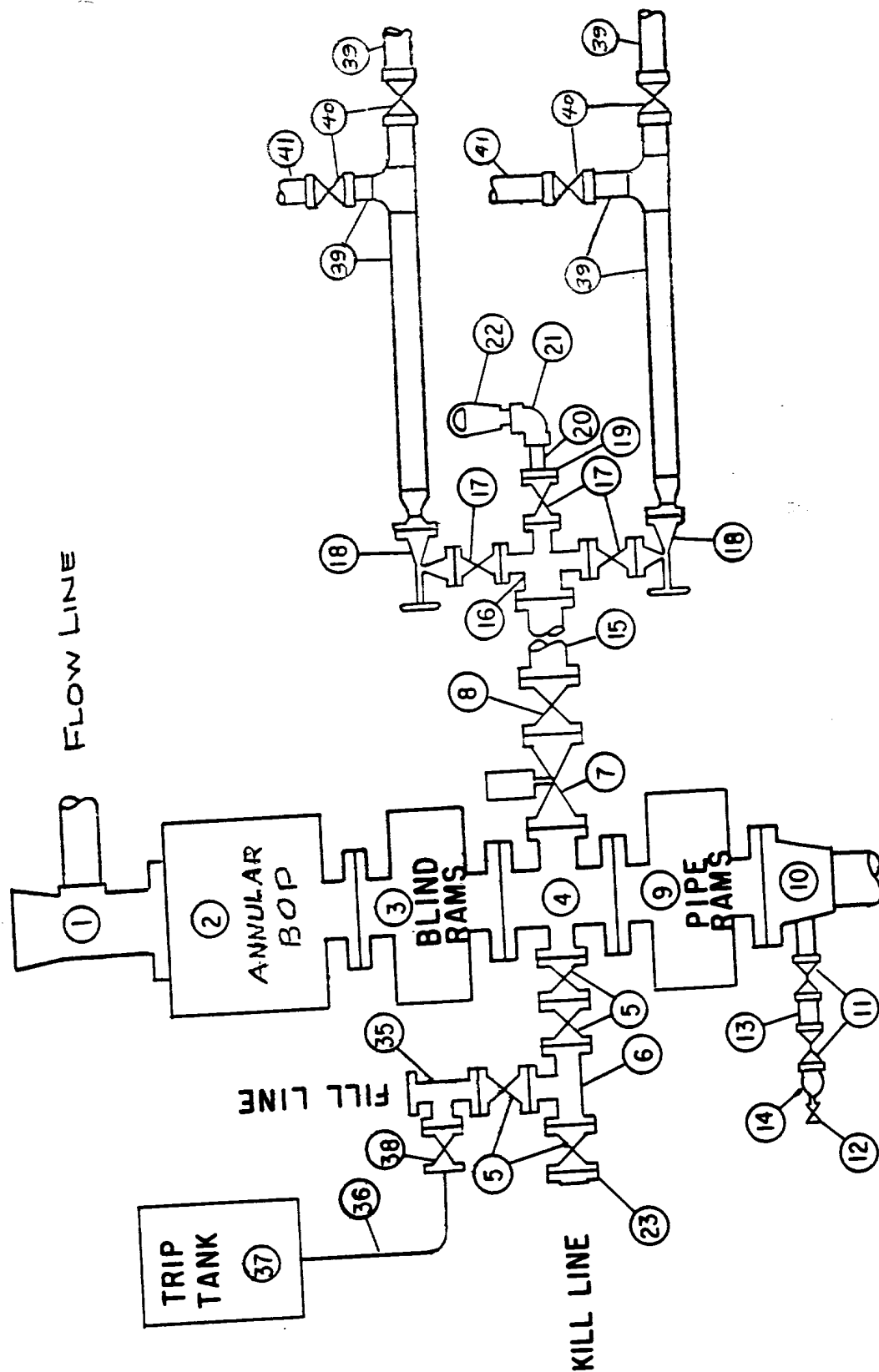
1. Bell nipple.
2. Hydril or Shaffer bag type preventer.
3. Ram type pressure operated blowout preventer with blind rams.
4. Flanged spool with one 4-inch and one 2-inch (minimum) outlet.
5. 2-inch (minimum) flanged plug or gate valve.
6. 2-inch by 2-inch by 2-inch (minimum) flanged tee.
7. 4-inch pressure operated gate valve.
8. 4-inch flanged gate or plug valve.
9. Ram type pressure operated blowout preventer with pipe rams.
10. Flanged type casing head with one side outlet (furnished by Exxon).
11. 2-inch threaded (or flanged) plug or gate valve (furnished by Exxon).
Flanged on 5000# WP, threaded on 3000# WP or less.
12. Needle valve (furnished by Exxon).
13. 2-inch nipple (furnished by Exxon).
14. Tapped bull plug (furnished by Exxon).
15. 4-inch flanged spacer spool.
16. 4-inch by 2-inch by 2-inch by 2-inch flanged cross.
17. 2-inch flanged plug or gate valve.
18. 2-inch flanged adjustable choke.
19. 2-inch threaded flange.
20. 2-inch XXH nipple.
21. 2-inch forged steel 90° Ell.
22. Cameron (or equal.) threaded pressure gage.
23. Threaded flange.

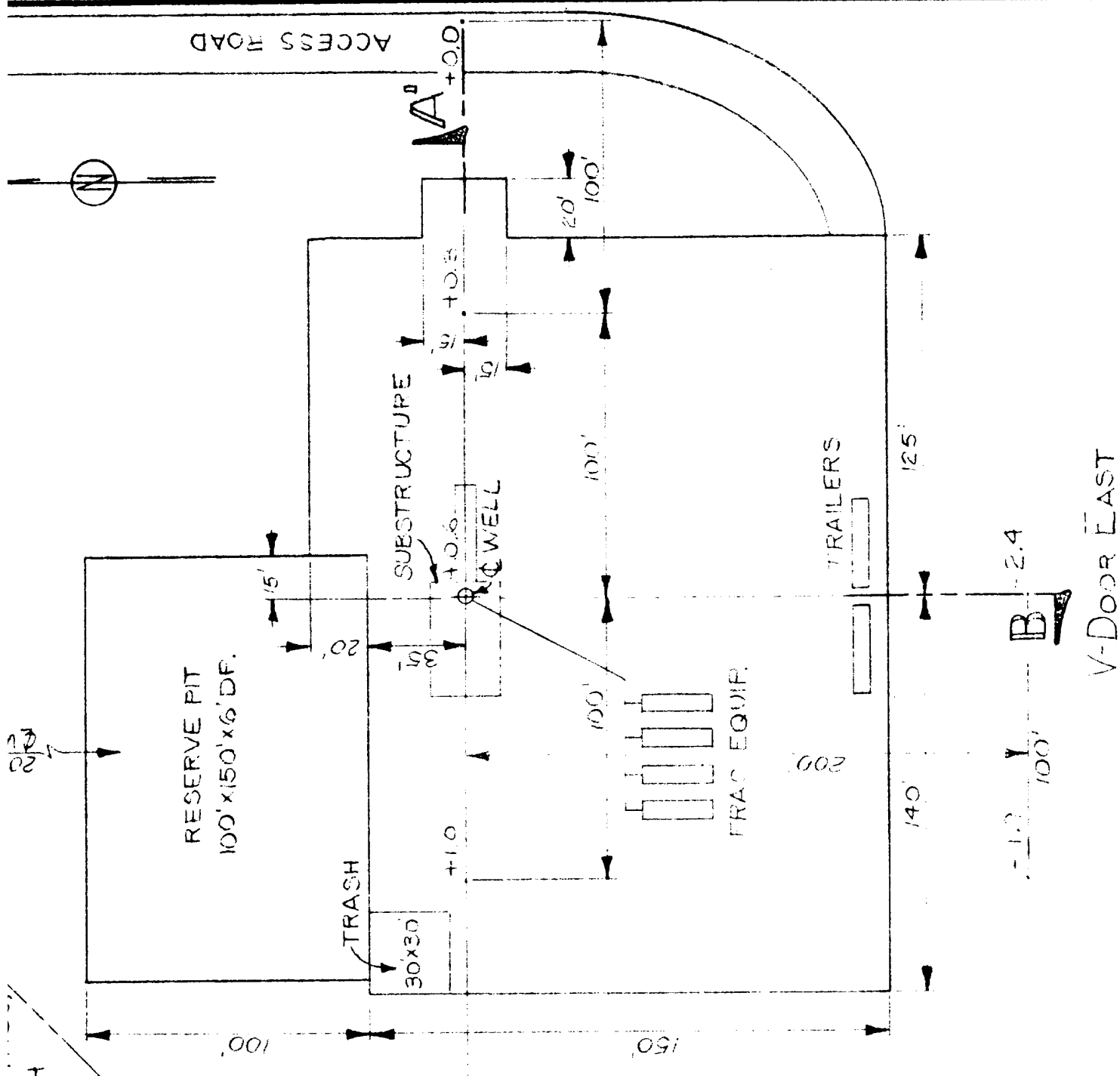
35. 2-inch flanged tee.
36. 3-inch (minimum) hose. (Furnished by Exxon).
37. Trip tank. (Furnished by Exxon).
38. 2-inch flanged plug or gate valve.
39. 2-1/2-inch pipe, 300' to pit, anchored.
40. 2-1/2-inch SE valve.
41. 2-1/2-inch line to steel pit or separator.

NOTES:

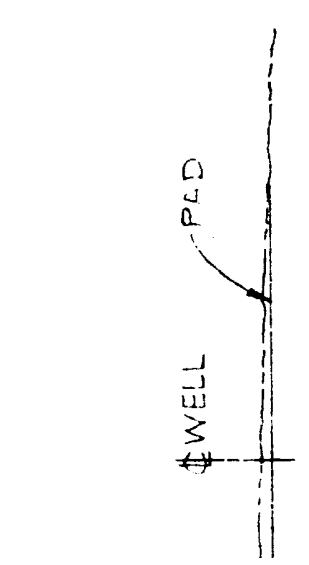
1. Items 3, 4 and 9 may be replaced with double ram type preventer with side outlets between the rams.
2. The two valves next to the stack on the fill and kill line to be closed unless drill string is being pulled.
3. Kill line is for emergency use only. This connection shall not be used for filling.
4. Replacement pipe rams and blind rams shall be on location at all times.
5. Only type U, LWS and QRC ram type preventers with secondary seals are acceptable for 5000 psi WP and higher BOP stacks.
6. Type E ram-type BOP's with factory modified side outlets may be used on 3000 psi or lower WP BOP stacks.

MIDLAND DRILLING ORGANIZATION BLOWOUT PREVENTER SPECIFICATION TYPE II - C

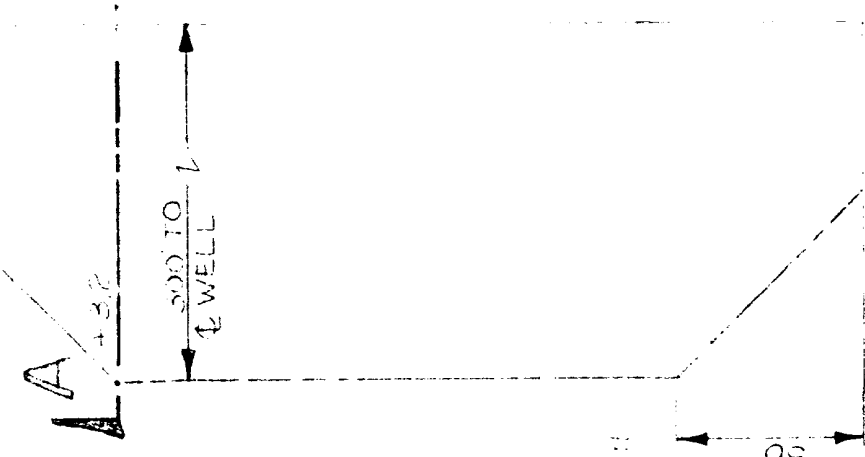




TO BE IDENTIFIED WITH
 A MARKED BARRIER.



SECTION A-A'



SECTION B-B'

V-Door East

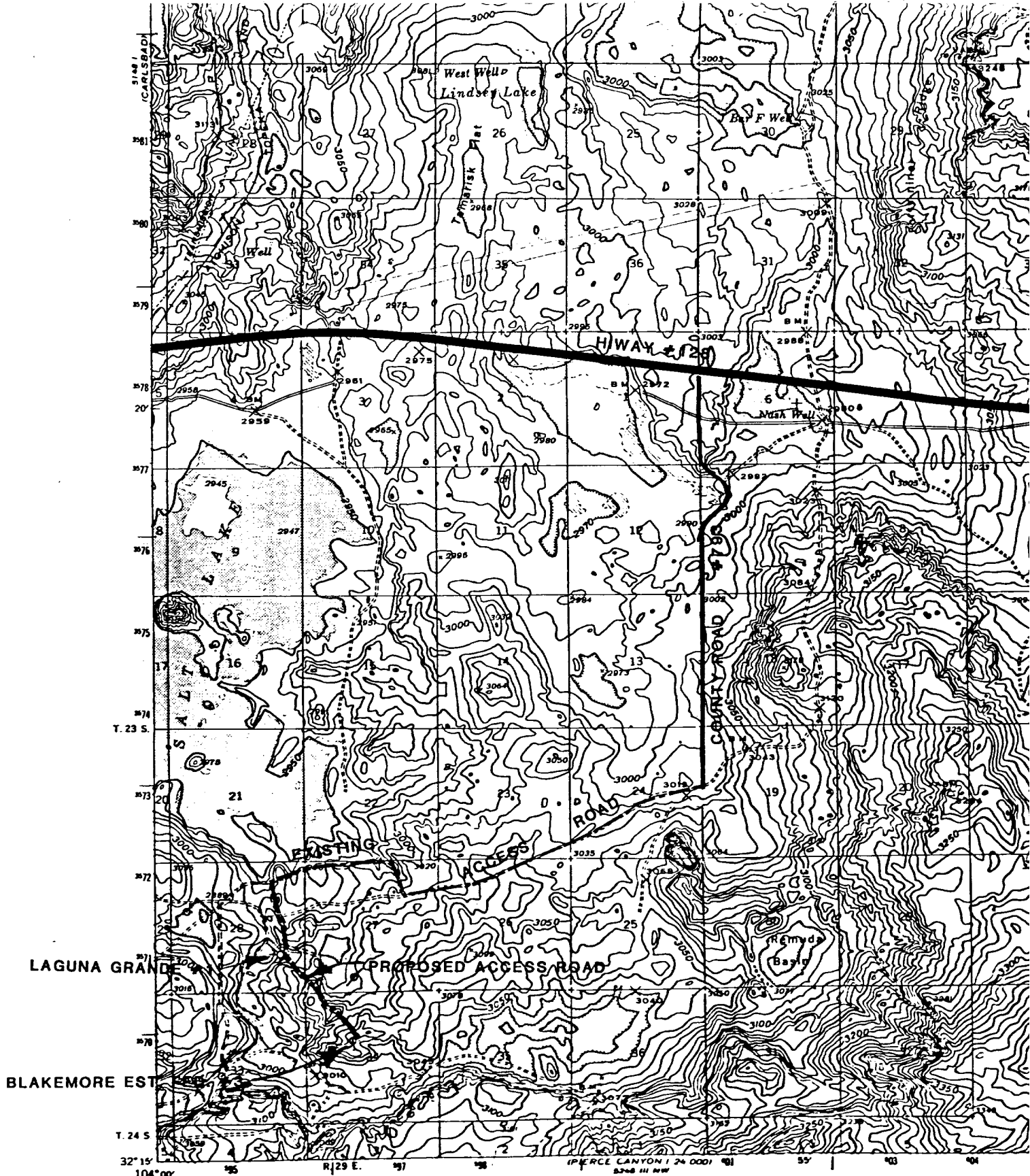


EXHIBIT "A"

EXXON COMPANY, USA

Topography by Max J. Gleissner, R. O. Davis,
M. C. McClellan, C. E. Walker, R. E. Isto, R. E. Mann,
N. B. Wright, J. A. Maier, Harry Parker,
and Lower Pecos River Survey

Surveyed in 1935 and 1939

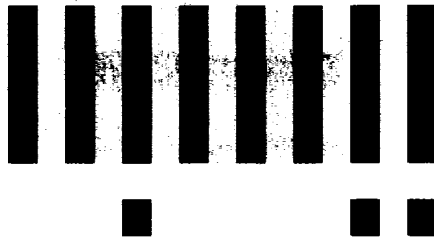
BLAKEMORE ESTATE FEDERAL #3

SE NW SECTION 34, T. 23 S., R. 29 E., EDDY COUNTY, NEW MEXICO

UTM GRID AND 1965 MAGNETIC NORTH
DECLINATION AT CENTER OF SHEET

WA-8175

FOR SALE BY U.S. GEOLOGICAL SURVEY



LTR



Job separation sheet

UNITED STATES
DEPARTMENT OF THE INTERIOR
GEOLOGICAL SURVEY

SUNDRY NOTICES AND REPORTS ON WELLS

(Do not use this form for proposals to drill or to deepen or plug back to a different reservoir. Use Form 9-331-C for such proposals.)

1. oil well ☒ gas well ☐ other

2. NAME OF OPERATOR
Exxon Corporation

3. ADDRESS OF OPERATOR
P.O. Box 1600; Midland, Texas 79702

4. LOCATION OF WELL (REPORT LOCATION CLEARLY. See space 17 below.)
AT SURFACE: 1980' FNL & 2130' FWL of Section
AT TOP PROD. INTERVAL:
AT TOTAL DEPTH:

16. CHECK APPROPRIATE BOX TO INDICATE NATURE OF NOTICE, REPORT, OR OTHER DATA

REQUEST FOR APPROVAL TO:

TEST WATER SHUT-OFF ☐
FRACTURE TREAT ☐
SHOOT OR ACIDIZE ☐
REPAIR WELL ☐
PULL OR ALTER CASING ☐
MULTIPLE COMPLETE ☐
CHANGE ZONES ☐
ABANDON* ☐
(other) Amend location

SUBSEQUENT REPORT OF:

☐
☐
☐
☐
☐
☐
☐
☐

17. DESCRIBE PROPOSED OR COMPLETED OPERATIONS (Clearly state all pertinent details, and give pertinent dates, including estimated date of starting any proposed work. If well is directionally drilled, give subsurface locations and measured and true vertical depths for all markers and zones pertinent to this work.)*

At the request of the BLM, the above well has been moved 50' East.

Subsurface Safety Valve: Manu. and Type _____ Set @ _____ Ft.

18. I hereby certify that the foregoing is true and correct

SIGNED Melba Knippling TITLE Unit Head DATE 10-31-83

(This space for Federal or State office use)

APPROVED BY _____
CONDITIONS OF APPROVAL, IF ANY:

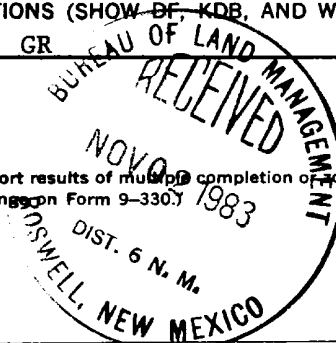
TITLE _____ DATE _____

ACCEPTED FOR RECORD

NOV 2 1983

RECEIVED BY NOV 04 1983 Form Approved Budget Bureau No. 42-R1424 O. C. D.	
5. LEASE NM-19848	ARTESIA, NEW MEXICO
6. IF INDIAN, ALLOTTEE OR TRIBE NAME --	
7. UNIT AGREEMENT NAME --	
8. FARM OR LEASE NAME Blakemore Estate Federal	
9. WELL NO. 3	
10. FIELD OR WILDCAT NAME Wildcat - <u>Paul Spence</u>	
11. SEC., T., R., M., OR BLK. AND SURVEY OR AREA Sec. 34-23S-29E	
12. COUNTY OR PARISH Eddy	13. STATE New Mexico
14. API NO.	
15. ELEVATIONS (SHOW OF, KDB, AND WD) 3069' GR	

(NOTE: Report results of multiple completion or zone changes on Form 9-330)



Federal Lse. No. _____ All distances must be from the outer boundaries of the Section.

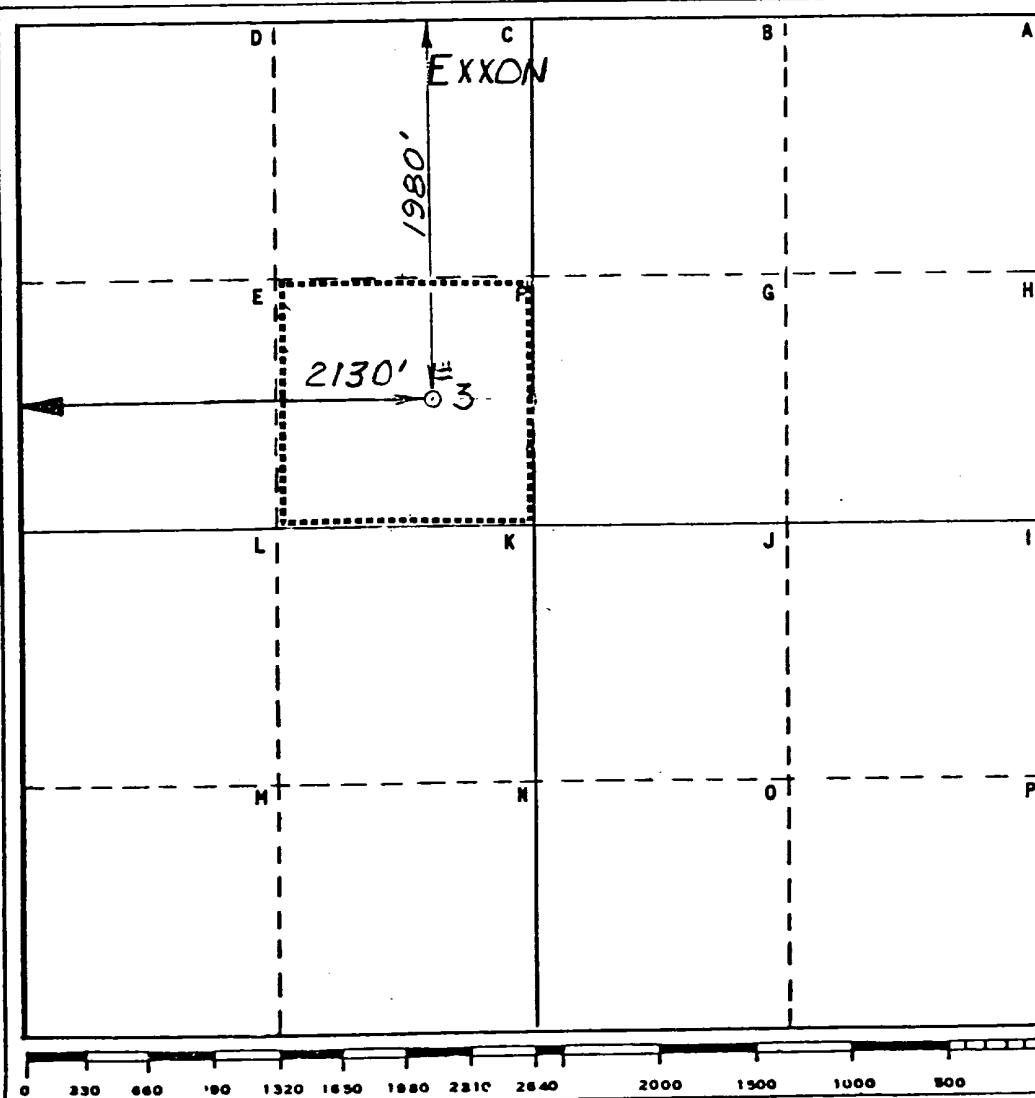
Operator Exxon Corporation		Lease BLAKE MORE ESTATE FED.		Well No. 3
Unit Letter F	Section 34	Township 23 S	Range 29 E	County EDDY
Actual Footage Location of Well: 1980 feet from the NORTH line and 2130 feet from the WEST line				
Ground Level Elev. 3069	Producing Formation BONE SPRING	Pool WILDCAT	Dedicated Acreage: 40 Acres	

1. Outline the acreage dedicated to the subject well by colored pencil or hachure marks on the plat below.
2. If more than one lease is dedicated to the well, outline each and identify the ownership thereof (both as to working interest and royalty).
3. If more than one lease of different ownership is dedicated to the well, have the interests of all owners been consolidated by communitization, unitization, force-pooling, etc?

☐ Yes ☐ No If answer is "yes," type of consolidation _____

If answer is "no," list the owners and tract descriptions which have actually been consolidated. (Use reverse side of this form if necessary.) _____

No allowable will be assigned to the well until all interests have been consolidated (by communitization, unitization, forced-pooling, or otherwise) or until a non-standard unit, eliminating such interests, has been approved by the Commission.



CERTIFICATION

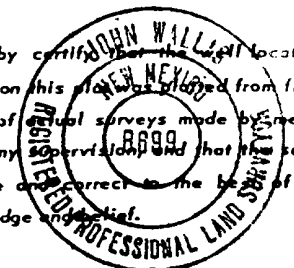
I hereby certify that the information contained herein is true and complete to the best of my knowledge and belief.

Name
Melba Kripling
Position
UNIT HEAD

Company Exxon Corporation
Box 1600 Midland, Texas

Date

I hereby certify that the well location shown on this plat was plotted from field notes of actual surveys made by me or under my supervision and that the same is true and correct to the best of my knowledge and belief.



Date Surveyed
10-27-83

Registered Professional Engineer
and/or Land Surveyor

John Wallis
Certificate No.
8699