

NM OIL COR
Drawer DD
Artesia, NM 88405

COMMISSION

UNITED STATES
DEPARTMENT OF THE INTERIOR
GEOLOGICAL SURVEY

RECEIVED

SUBMIT IN REPLICATE
NOV 28 1983
(with instructions on
reverse side)

O. C. D.

ARTESIA, OFFICE

Form approved.
Budget Bureau No. 42-R1425.

30-015-24691

5. LEASE DESIGNATION AND SERIAL NO.

LC-065705

6. IF INDIAN, ALLOTTEE OR TRIBE NAME

7. UNIT AGREEMENT NAME

8. FARM OR LEASE NAME

Maralo-Federal

9. WELL NO.

1

10. FIELD AND POOL, OR WILDCAT

Corral Canyon (Delaware)

11. SEC., T., R., M., OR BLK.
AND SURVEY OR AREA

18-25S-30E

12. COUNTY OR PARISH

Eddy

13. STATE

N.M.

APPLICATION FOR PERMIT TO DRILL, DEEPEN, OR PLUG BACK

1a. TYPE OF WORK

DRILL ☒DEEPEN ☐PLUG BACK ☐

b. TYPE OF WELL

OIL
WELL ☒GAS
WELL ☐

OTHER

SINGLE
ZONE ☒MULTIPLE
ZONE ☐

2. NAME OF OPERATOR

C. Clyde Hamblin

3. ADDRESS OF OPERATOR

606 W. Tennessee, Suite 107, Midland, TX 79701

4. LOCATION OF WELL (Report location clearly and in accordance with any State requirements.)*

At surface

1980' FNL & 660' FEL, Sec. 18, T-25-S, R-30E

At proposed prod. zone Same

14. DISTANCE IN MILES AND DIRECTION FROM NEAREST TOWN OR POST OFFICE*

11 miles Southeast of Malaga, N.M.

15. DISTANCE FROM PROPOSED*

LOCATION TO NEAREST
PROPERTY OR LEASE LINE, FT.
(Also to nearest drlg. unit line, if any)

660'

16. NO. OF ACRES IN LEASE

80

17. NO. OF ACRES ASSIGNED
TO THIS WELL

40

18. DISTANCE FROM PROPOSED LOCATION*
TO NEAREST WELL, DRILLING, COMPLETED,
OR APPLIED FOR, ON THIS LEASE, FT.

1320'

19. PROPOSED DEPTH

3800'

20. ROTARY OR CABLE TOOLS

Rotary

21. ELEVATIONS (Show whether DF, RT, GR, etc.)

3178.3 ft. GR

22. APPROX. DATE WORK WILL START*

As soon as possible

23.

PROPOSED CASING AND CEMENTING PROGRAM

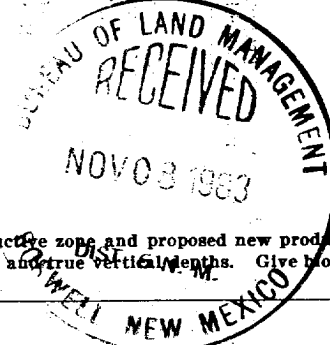
SIZE OF HOLE	SIZE OF CASING	WEIGHT PER FOOT	SETTING DEPTH	QUANTITY OF CEMENT
12-3/4 - 11	8-5/8"	28# S-80 & K-55	680'	400 sx CIRCULATE
7-7/8 - 6-3/4	4-1/2"	9.50# J-55	3700'	200 sx

Cement Program: 8-5/8" csg. - 400 sx Halliburton Class "C" w/1# flocele and 2% CaCl₂.
4-1/2" csg. - 200 sx Halliburton Class "C" 50/50 Poz w/6# salt, .3%
Halad 9 & 2% gel.

Mud Program: Drill to 3500' with brine water, mud up with salt water gel and core
and drill to total depth. Fresh water mud from surface to 680'

Pressure Control Equipment: A 3000# test blowout preventer will be used. See
Exhibit "C".

Gas not dedicated.



IN ABOVE SPACE DESCRIBE PROPOSED PROGRAM: If proposal is to deepen or plug back, give data on present productive zone and proposed new productive zone. If proposal is to drill or deepen directionally, give pertinent data on subsurface locations and measured and true vertical depths. Give blowout preventer program, if any.

24.

SIGNED

C. Clyde Hamblin

TITLE

Owner

DATE

11-7-83

(This space for Federal or State office use)

PERMIT NO.

APPROVAL DATE

APPROVED BY

P. D. Lopez

TITLE

DATE

11/18/83

CONDITIONS OF APPROVAL, IF ANY:

APPROVAL SUBJECT TO
GENERAL REQUIREMENTS AND
SPECIAL STIPULATIONS
ATTACHED

NEW MEXICO OIL CONSERVATION COMMISSION
WELL LOCATION AND ACREAGE DEDICATION PLAT

Form C-102
Supersedes C-128
Effective 1-1-65

All distances must be from the outer boundaries of the Section

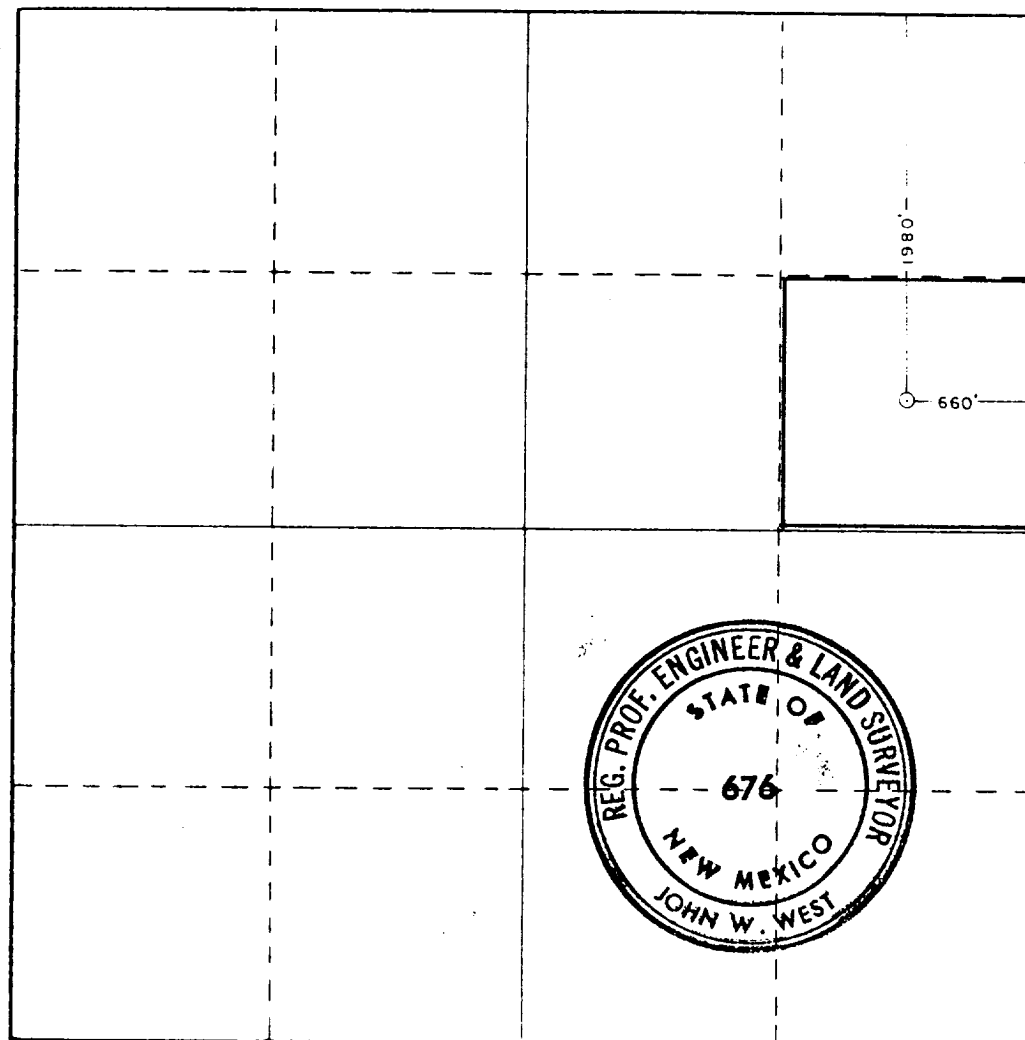
Owner C. Clyde Hamblin			Lease MARALO FEDERAL			Well No. 1		
Section Letter H	Section 18	Township 25 SOUTH	Range 30 EAST	County EDDY				
Well Location of Well:								
1980 feet from the NORTH line and		660 feet from the EAST line						
Well Elev. 3178.3	Producing Formation Delaware Sand		Pool Corral Canyon			Dedicated Acreage 40		

- Outline the acreage dedicated to the subject well by colored pencil or hatchure marks on the plat below.
- If more than one lease is dedicated to the well, outline each and identify the ownership thereof (both as to working interest and royalty).
- If more than one lease of different ownership is dedicated to the well, have the interests of all owners been consolidated by communitization, unitization, force-pooling, etc?

☐ Yes ☐ No If answer is "yes," type of consolidation _____

If answer is "no," list the owners and tract descriptions which have actually been consolidated. (Use reverse side of this form if necessary.) _____

No allowable will be assigned to the well until all interests have been consolidated (by communitization, unitization, forced-pooling, or otherwise) or until a non-standard unit, eliminating such interests, has been approved by the Commission.



CERTIFICATION

I hereby certify that the information contained herein is true and complete to the best of my knowledge and belief.

C. Clyde Hamblin
Name

C. Clyde Hamblin

Position
Owner

Company
Self

Date
November 7, 1983

I hereby certify that the well location shown on this plat was plotted from field notes of actual surveys made by me or under my supervision, and that the same is true and correct to the best of my knowledge and belief.

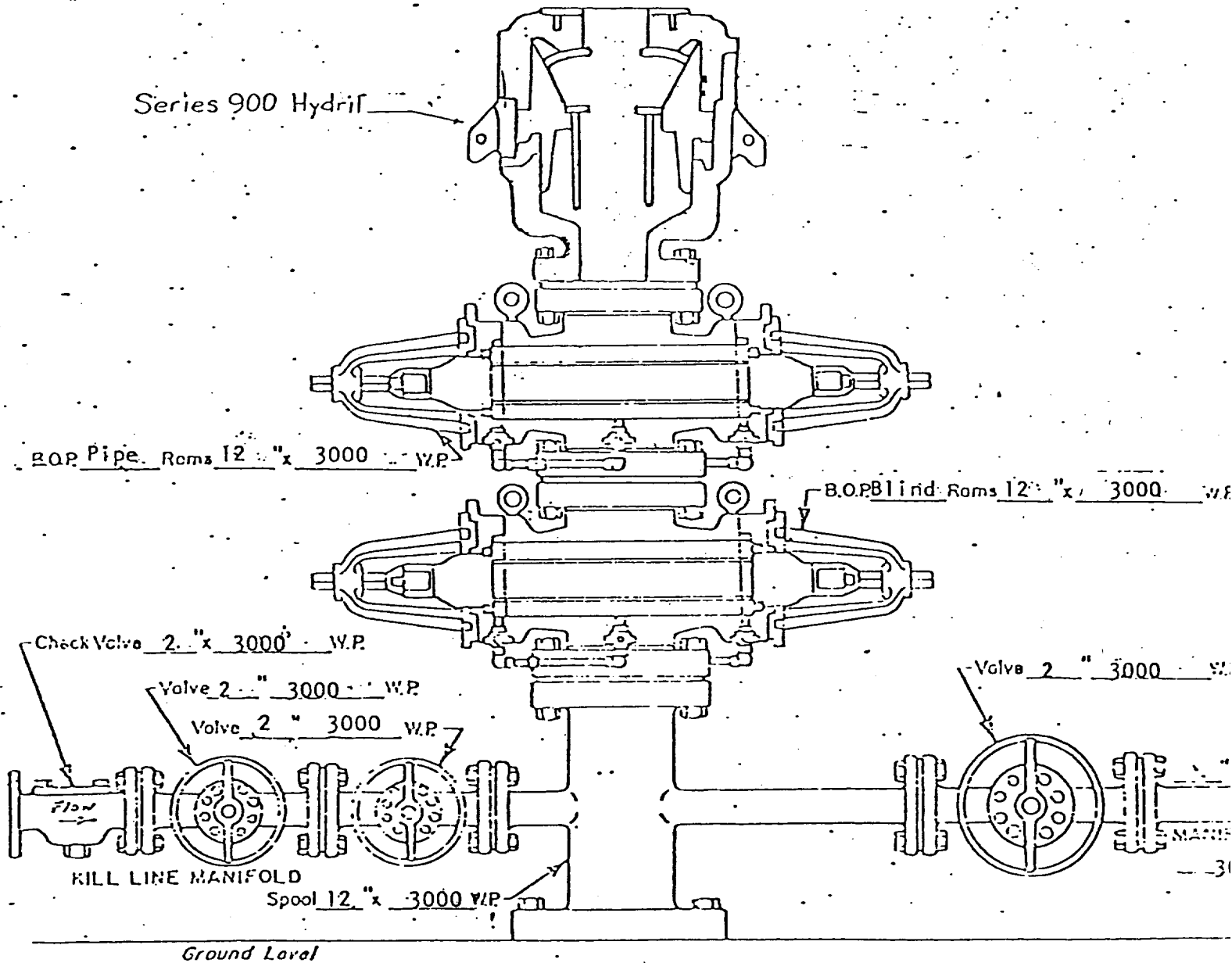
Date Surveyed
OCTOBER 24, 1983

Registered Professional Engineer and/or Land Surveyor

John W. West
Certificate No **JOHN W. WEST, 676**
RONALD J. EIDSON, 3239

330 660 90 1320 1650 1980 2310 2640 2000 1800 1000 800

EXHIBIT "C"
 C. Clyde Hamblin
 Maralo-Federal #1
 1980' FNL & 660' FEL
 Section 18, T-25-S, R-30-E
 Eddy County, New Mexico



SURFACE
WELL HEAD B.O.P.
3000 W.P.

☐ Manual
☒ Hydraulic

APPLICATION FOR DRILLING

C. Clyde Hamblin
Maralo-Federal Well No. 1
1980' FNL & 660' FEL
Section 18, T-25-S, R-30-E
Eddy County, New Mexico

In conjunction with Form 9-331C, Application for Permit to Drill subject well, C. Clyde Hamblin submits the following nine items of pertinent information in accordance with USGS requirements:

1. The geologic surface formation is Quaternary.
2. The estimated tops of geologic markers are as follows:

Triassic	170
Rustler	680
Castile	900
Lamar	3560
Delaware	3590

3. The estimated depths at which anticipated water, oil or gas formations are expected to be encountered:

Water:	150 to 170 feet
Oil or Gas:	3620 to 3670 feet

4. Proposed Casing Program: See Form 9-331C.
5. Pressure Control Equipment: See Form 9-331C and Exhibit "C".
6. Mud Program: See Form 9-331C.
7. Testing, Logging and Coring Programs:

Coring: Delaware Sand 3620 to 3670 feet

Drill Stem Tests: None

Mud Logging: None

Electric Logging: Sonic from T.D. to 200 feet
above T.D.
Gamma Ray from T.D. to Surface

8. No abnormal pressures or temperatures are anticipated.
9. Anticipated starting date: As soon as possible.

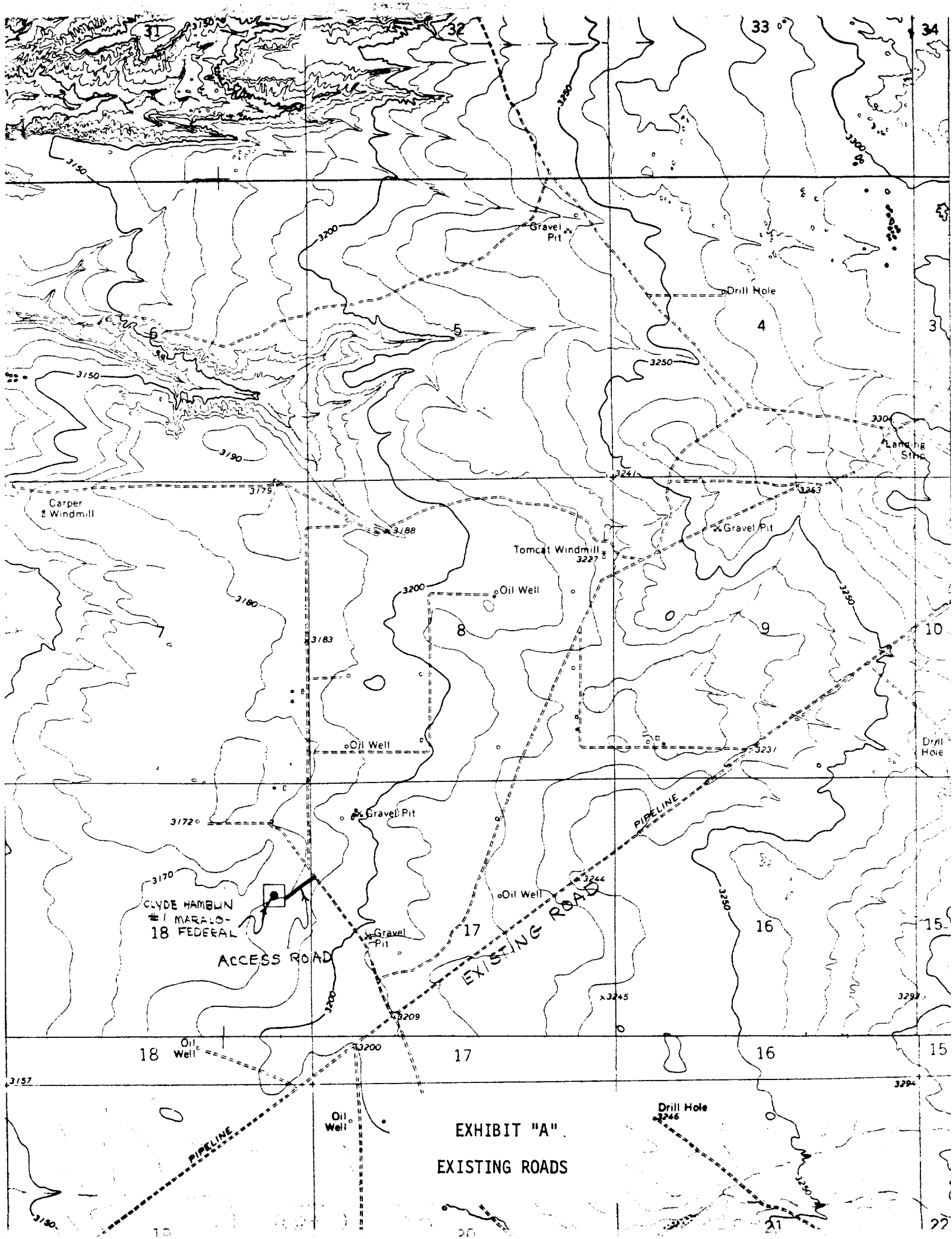


EXHIBIT "A"
EXISTING ROADS

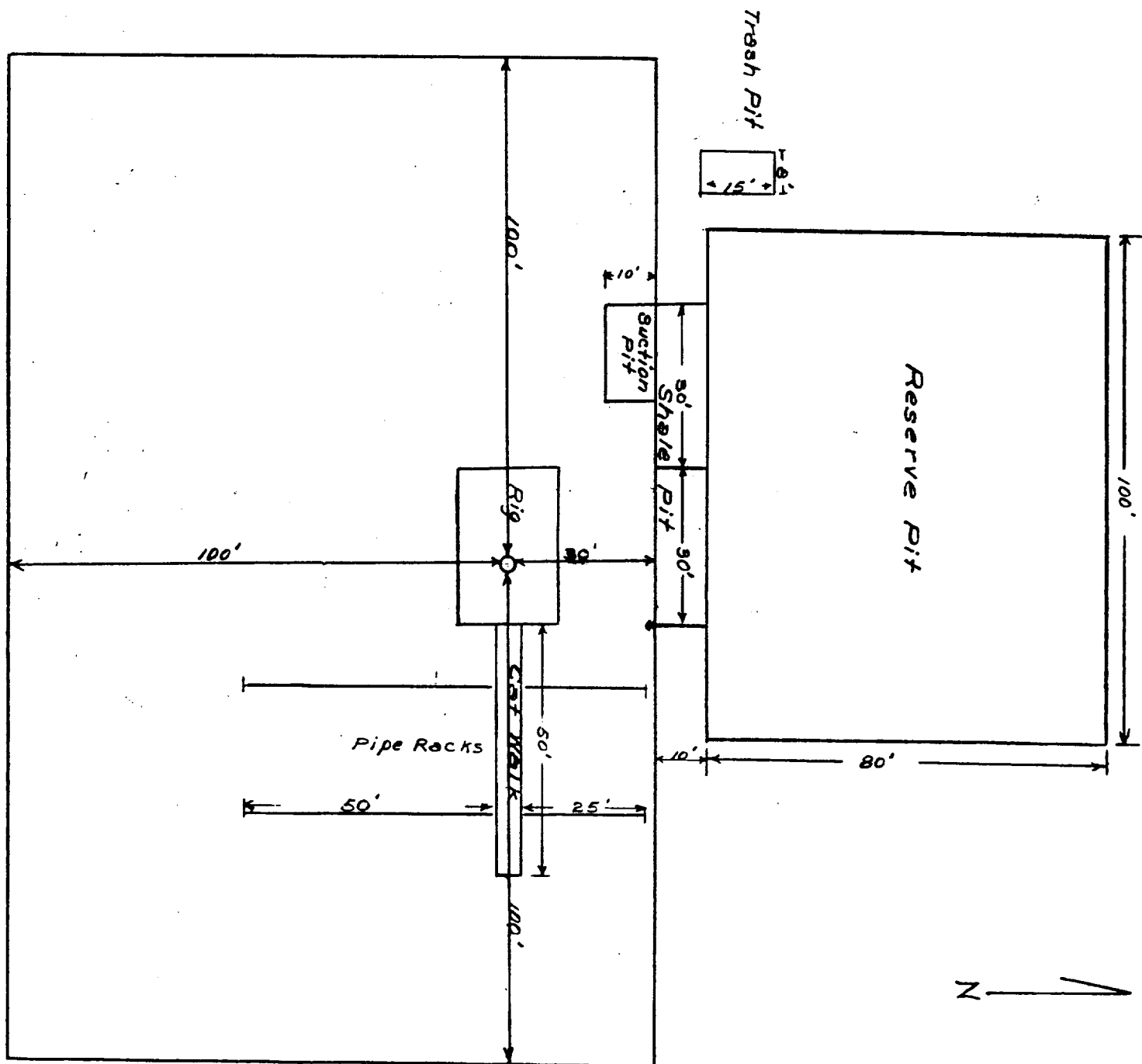


EXHIBIT "D"
 C. Clyde Hamblin
 Maralo-Federal #1
 Eddy County, N.M.