

NM OIL CONS. COMMISSION
Drawer
Artesia, NM 88210
UNITED STATES
DEPARTMENT OF THE INTERIOR
GEOLOGICAL SURVEYSUBMIT IN THE MANNER INDICATED*
(Other instructions on reverse side)Form approved.
Budget Bureau No. 42-R1425.

30-015-24698

C127

APPLICATION FOR PERMIT TO DRILL, DEEPEN, OR PLUG BACK

1a. TYPE OF WORK

DRILL ☒DEEPEN ☐PLUG BACK ☐

b. TYPE OF WELL

OIL
WELL ☒GAS
WELL ☐OTHER ☐SINGLE
ZONE ☒MULTIPLE
ZONE ☐

2. NAME OF OPERATOR

Exxon Corporation ✓

3. ADDRESS OF OPERATOR

P.O. Box 1600; Midland, Texas 79702

4. LOCATION OF WELL (Report location clearly and in accordance with any State requirements.)*

At surface

330' FNL & 900' FEL of Section

At proposed prod. zone

RECEIVED BY

NOV 23 1983

O. C. D.

ARTESIA OFFICE

ut, ft

5. LEASE DESIGNATION AND SERIAL NO.

NM-0426782

6. IF INDIAN, ALLOTTEE OR TRIBE NAME

--

7. UNIT AGREEMENT NAME

--

8. FARM OR LEASE NAME

Mary Federal

9. WELL NO.

2

10. FIELD AND POOL, OR WILDCAT

Wildcat - Delaware

11. SEC., T., R., M., OR BLK.
AND SURVEY OR AREA

Sec. 24-23S-25E

12. COUNTY OR PARISH

Eddy

13. STATE

New Mexico

14. DISTANCE IN MILES AND DIRECTION FROM NEAREST TOWN OR POST OFFICE*

12 miles SW of Carlsbad

15. DISTANCE FROM PROPOSED* LOCATION TO NEAREST PROPERTY OR LEASE LINE, FT.
(Also to nearest drlg. unit line, if any)

330' lse. line

330' drlg. line

16. NO. OF ACRES IN LEASE

2520

17. NO. OF ACRES ASSIGNED TO THIS WELL

40

18. DISTANCE FROM PROPOSED LOCATION* TO NEAREST WELL, DRILLING, COMPLETED, OR APPLIED FOR, ON THIS LEASE, FT.

#1

19. PROPOSED DEPTH

5825' 5400'

20. ROTARY OR CABLE TOOLS

Rotary

21. ELEVATIONS (Show whether DF, RT, GR, etc.)

3451' GR

22. APPROX. DATE WORK WILL START*

3rd quarter 1983

23.

PROPOSED CASING AND CEMENTING PROGRAM

SIZE OF HOLE	SIZE OF CASING	WEIGHT PER FOOT	SETTING DEPTH	QUANTITY OF CEMENT
17 1/2" 20	16 1/2 3/8"	65 54.5#	600' 60	475 sx CIRCULATE
11 1/2 1 1/4"	8 5/8"	24#	1000' 1600	500 sx CIRCULATE
7 7/8"	5 1/2"	17#	5400'	1100 sx



IN ABOVE SPACE DESCRIBE PROPOSED PROGRAM: If proposal is to deepen or plug back, give data on present productive zone and proposed new productive zone. If proposal is to drill or deepen directionally, give pertinent data on subsurface locations and measured and true vertical depths. Give blowout preventer program, if any.

24. SIGNED Melba Kripling TITLE Unit Head DATE 10-11-83

(This space for Federal or State office use)

PERMIT NO. _____ APPROVAL DATE _____

APPROVED BY /s/ Earl R. Cunningham TITLE District Manager DATE 11-22-83

CONDITIONS OF APPROVAL, IF ANY:

APPROVAL SUBJECT TO
GENERAL REQUIREMENTS AND
SPECIAL STIPULATIONS
ATTACHED

Exxon Lse. No. _____

NEW MEXICO OIL CONSERVATION COMMISSION

Form C-102
Supersedes C-128
Effective 1-1-65

State Lse. No. _____

WE LOCATION AND ACREAGE DEDICATION PLAT

Federal Lse. No. _____

All distances must be from the outer boundaries of the Section.

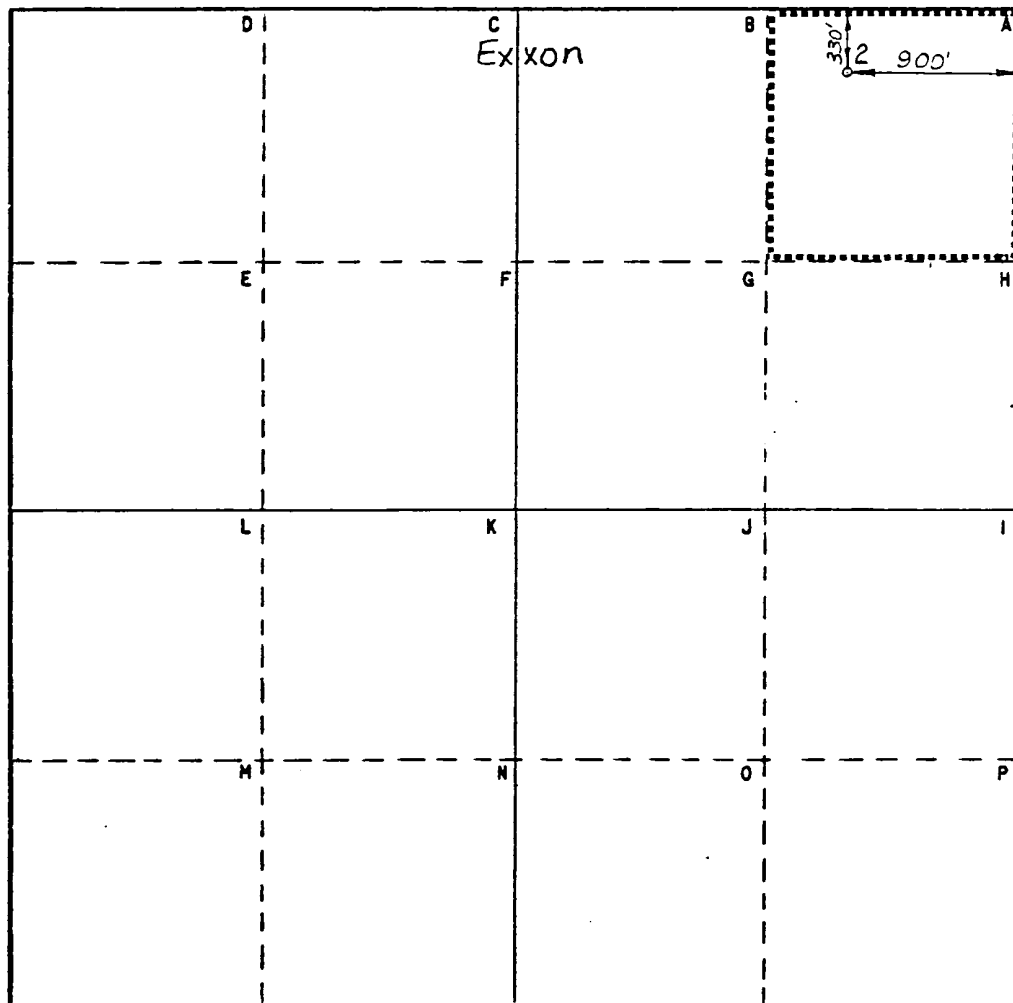
Operator Exxon Corporation		Lease MARY FEDERAL		Well No. 2	
Unit Letter A	Section 24	Township 23S	Range 25E	County EDDY	
Actual Footage Location of Well: 330 feet from the NORTH line and 900 feet from the EAST line					
Ground Level Elev: 3451'	Producing Formation DELAWARE		Pool WILDCAT	Dedicated Acreage: 40 Acres	

1. Outline the acreage dedicated to the subject well by colored pencil or hatchure marks on the plat below.
2. If more than one lease is dedicated to the well, outline each and identify the ownership thereof (both as to working interest and royalty).
3. If more than one lease of different ownership is dedicated to the well, have the interests of all owners been consolidated by communitization, unitization, force-pooling, etc?

☐ Yes ☐ No If answer is "yes," type of consolidation _____

If answer is "no," list the owners and tract descriptions which have actually been consolidated. (Use reverse side of this form if necessary.) _____

No allowable will be assigned to the well until all interests have been consolidated (by communitization, unitization, forced-pooling, or otherwise) or until a non-standard unit, eliminating such interests, has been approved by the Commission.



CERTIFICATION

I hereby certify that the information contained herein is true and complete to the best of my knowledge and belief.

Name

Position

UNIT HEAD

Company Exxon Corporation

Box 1600 Midland, Texas

Date

I hereby certify that the well location shown on this plat was plotted from field notes of actual surveys made by me or under my supervision, and that the same is true and correct to the best of my knowledge and belief.

Date Surveyed

7-22-83

Registered Professional Engineer
and/or Land Surveyor

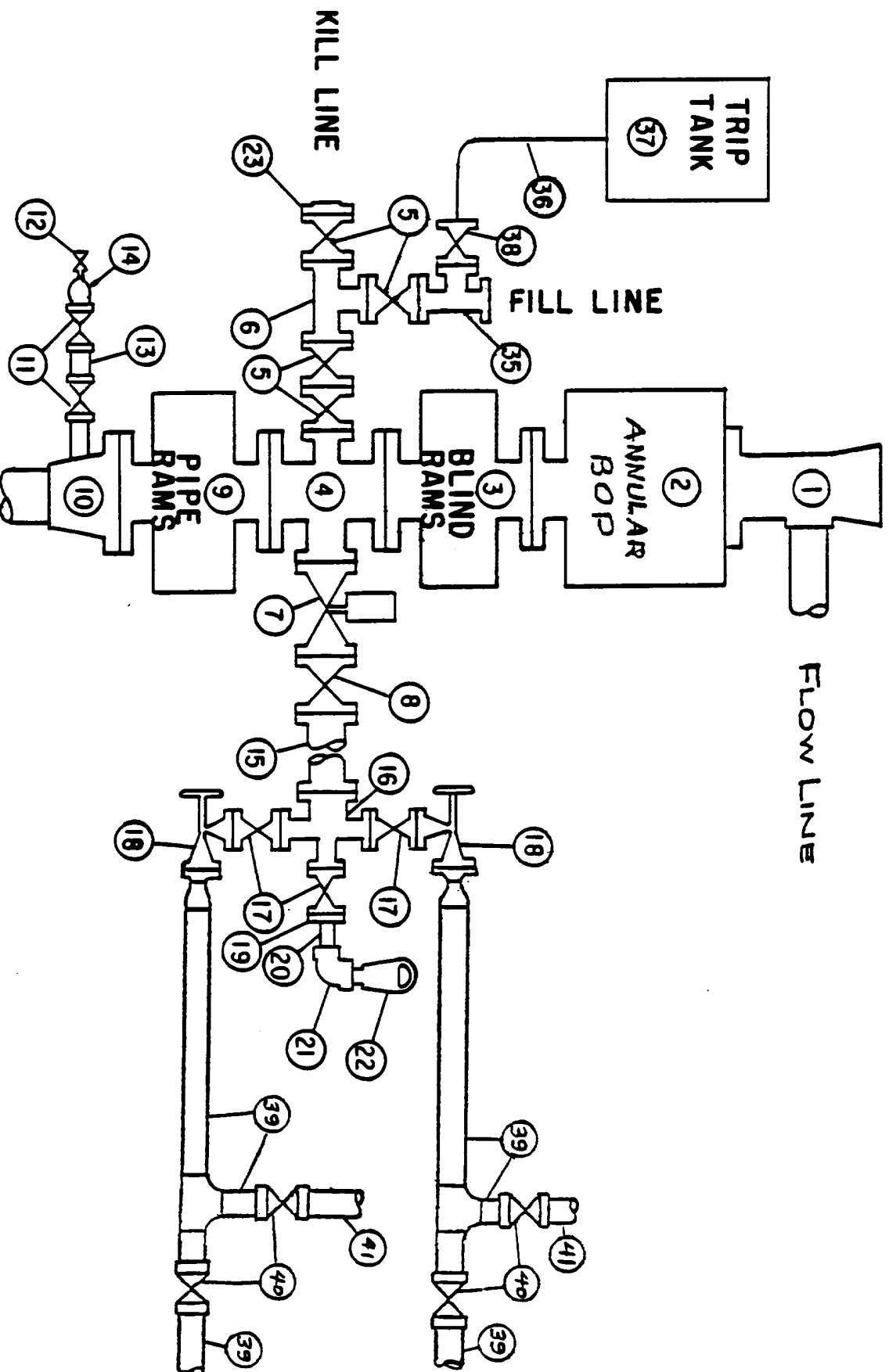
Certificate No.

6157

12 Miles SW of CARLSBAD, New Mexico

C.E. Sec. File No. A-8212

MIDLAND DRILLING ORGANIZATION BLOWOUT PREVENTER SPECIFICATION TYPE II - C



10 POINT PLAN

Section 24, T23S, T25E
Eddy County, New Mexico

1. The geologic name of the surface formation: Recent

2. The estimated tops of important geologic markers:

Delaware Mt. Grp. : 1900'
Bone Spring : 5100'

3. The estimated depths at which anticipated water, oil, gas, or other mineral bearing formations are expected to occur:

Deepest FW : 500'
Oil
Bone Spring : 5100'

4. Proposed casing program:

<u>STRING</u>	<u>SIZE</u>	<u>WEIGHT/GRADE</u>	<u>CONDITION</u>	<u>DEPTH INTERVAL</u>
Conductor	20"	94#/H-40	New	0- 40'
Surface	13-3/8"	54.5#/K-55	New	0- 600'
Intermediate	8-5/8"	24#/K-55	New	0-1900'
Production	5-1/2"	17#/K-55	New	0-5400'

5. Minimum specifications for pressure control equipment:

- A. Wellhead equipment - Threaded type, 2000 psi WP for 13-3/8" x 8-5/8" x 5-1/2" casing program with 2-7/8" tubing hanger.
- B. Blowout preventers - Refer to attached drawings and lists of equipment titled "Type II-C" for description of BOP stacks and choke manifold.
- C. BOP control unit - Unit will be hydraulically operated and have at least two control stations.
- D. Testing - Upon installation, the Type II-C BOP's for the 13-3/8" surface casing and the 8-5/8" intermediate casing will be tested to a low pressure (200-300 psi) and to a high pressure of 2000 psi. Casing rams will be body tested in a like manner. An operational test of the blowout preventers will be performed on each round trip, (but not more than once each day); the annular and pipe rams preventers will be closed on drill pipe and the blind rams will be closed while pipe is out of the hole.

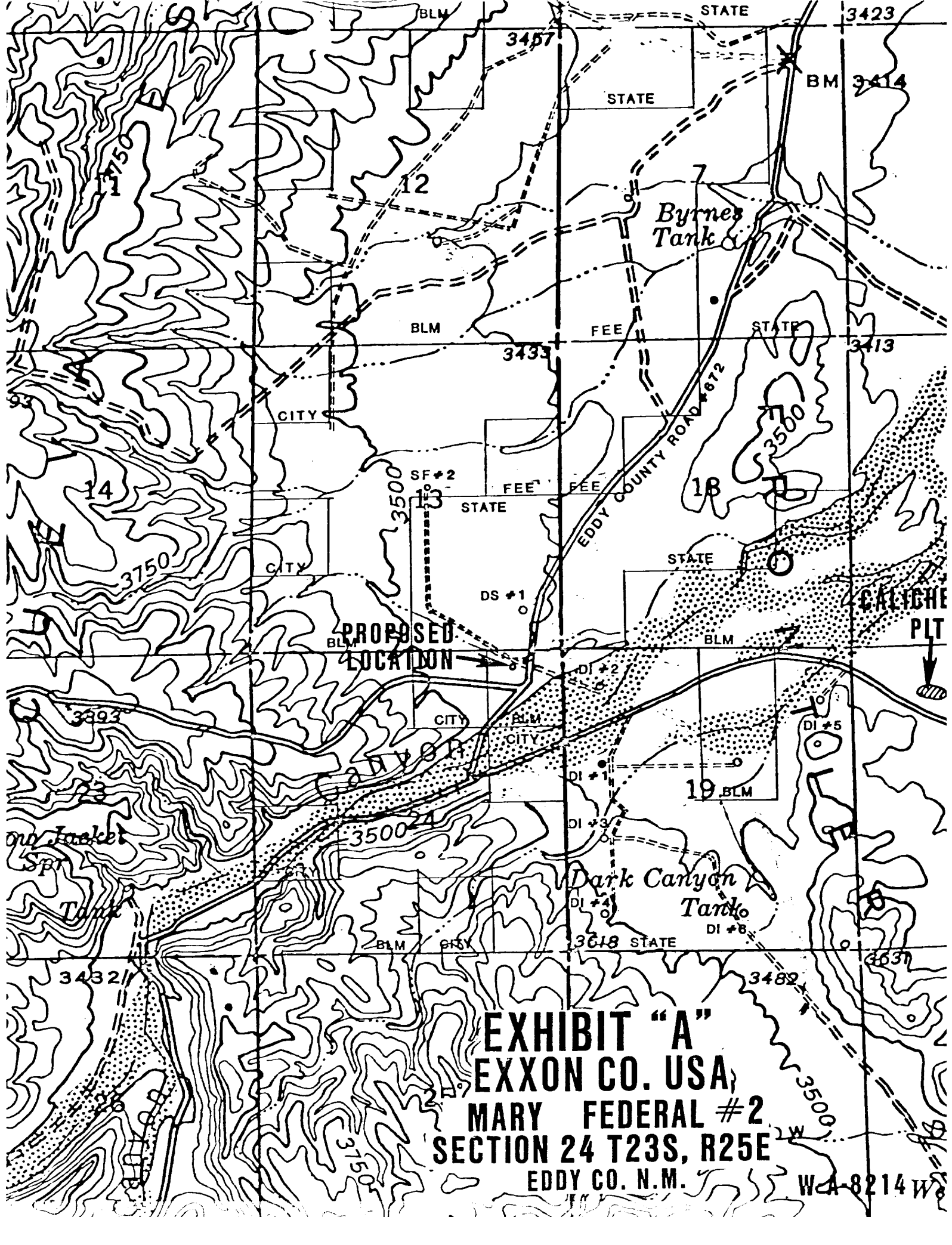
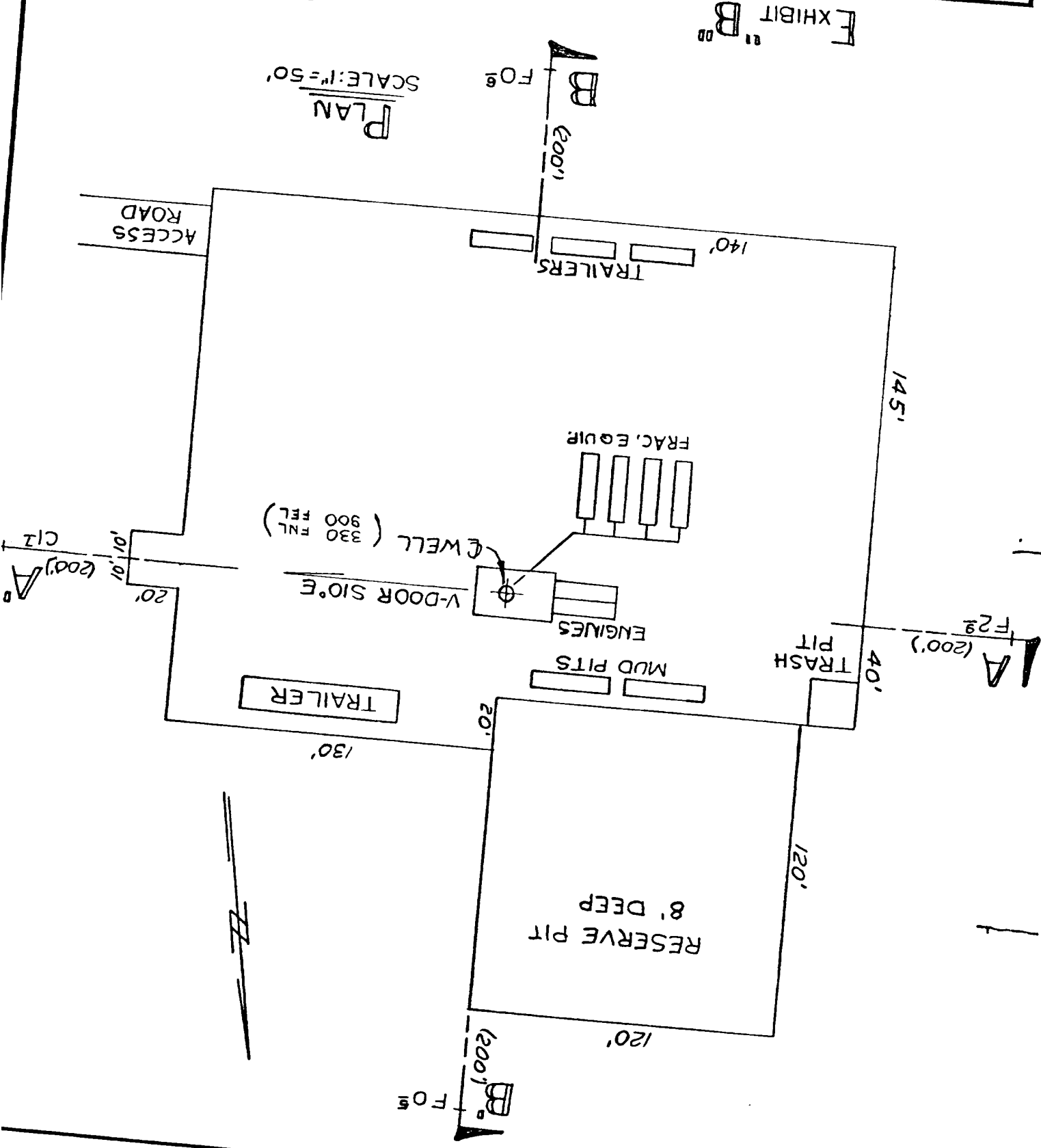


EXHIBIT "A"
EXXON CO. USA,
MARY FEDERAL #2
SECTION 24 T23S, R25E
EDDY CO. N.M.

W-4-8214 W

CHECKED		DRAWN Derek Cobb		ENGR. SECTION		APPROVED	
DATE 10-11-83		SCALE Shown		JOB NO.		FILE NO. W-B-1861	
RIG LAYOUT MARY FEDERAL #2				SECTION 24, T23S R25E			
SHEEP DRAW FIELD				EDDY CO., N.M.			
EXXON COMPANY U.S.A. (a division of Exxon Corporation)				PRODUCTION DEPARTMENT			



PLAN
SCALE: 1"=50'

EXHIBIT B

V-DOOR SIOE

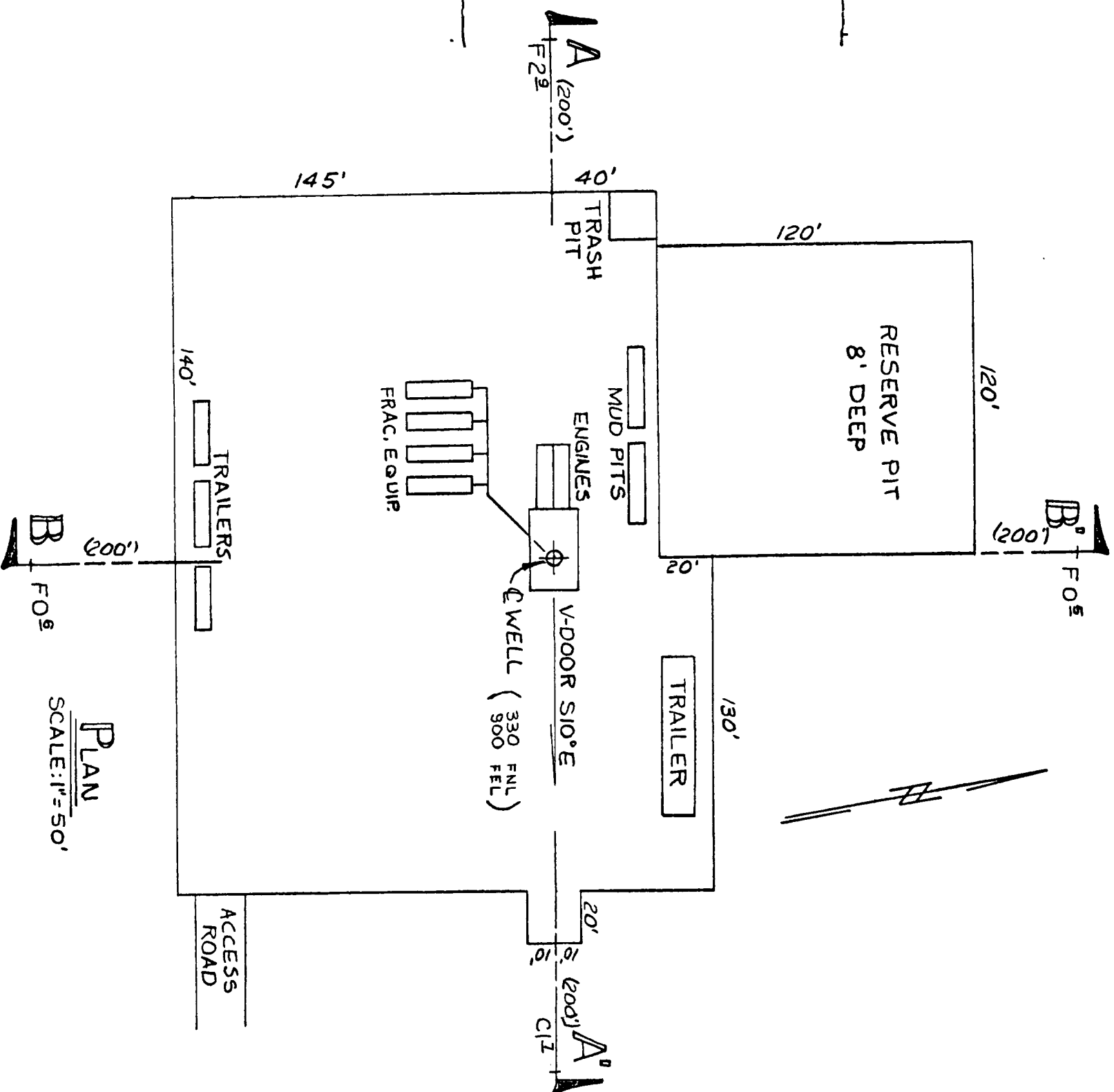
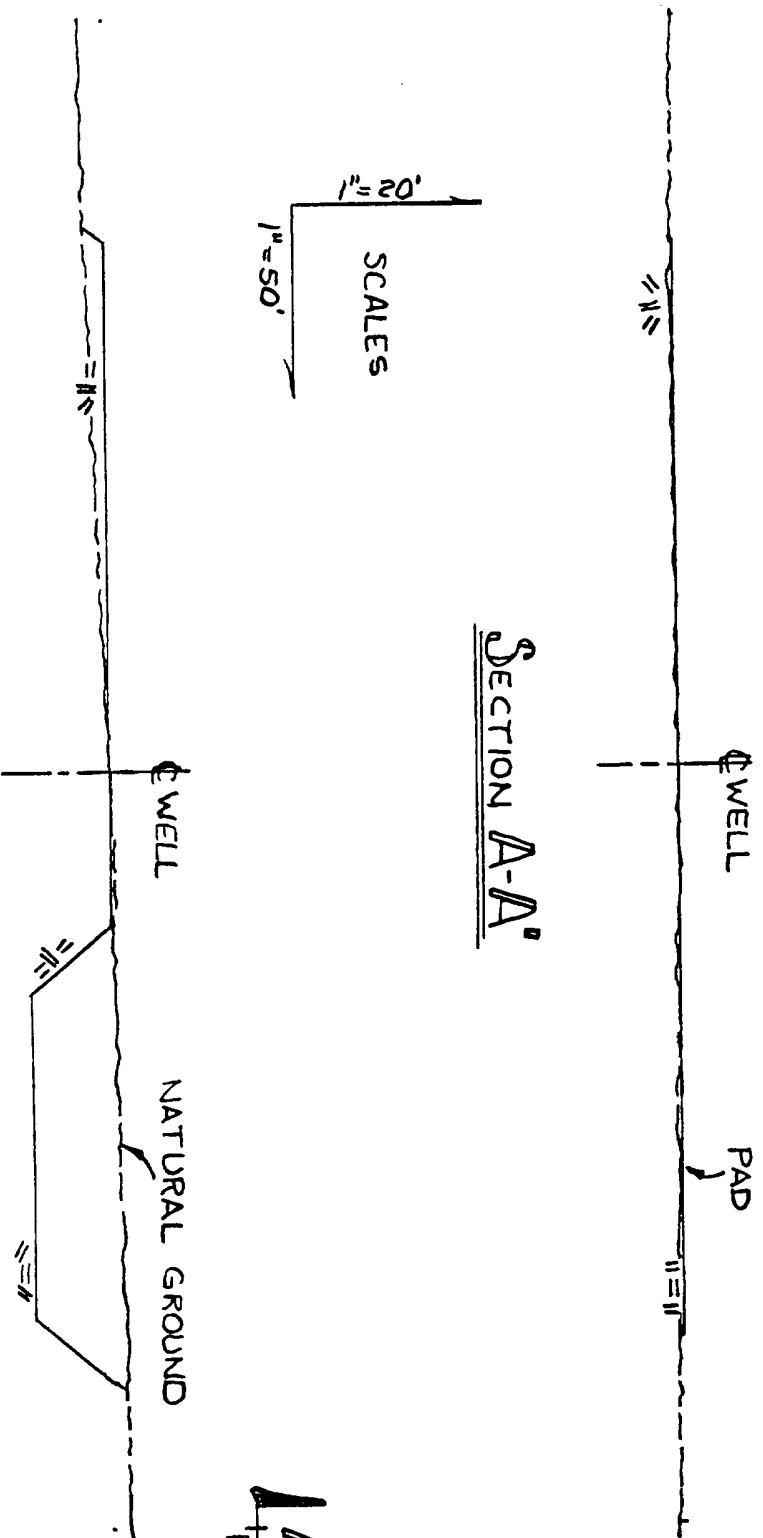


EXHIBIT B

V-Door S10°E

RIG LAYOUT MARY FEDERAL #2		EXXON COMPANY, U.S.A. (a division of Exxon Corporation)	
SECTION 24, T23S R25E		PRODUCTION DEPARTMENT	
SHEEP DRAW FIELD EDDY CO., N.M.		DATE 10-11-83	
DRAWN Derek Cobb		JOB NO.	
ENGINEER SECTION		FILE NO.	
APPROVED		W-B-1861	
CHECKED		SCALE Shown	