

RECEIVED BY
UNITED STATES
DEPARTMENT OF THE INTERIOR
NOV 28 1983
GEOLOGICAL SURVEY

APPLICATION FOR PERMIT TO DRILL, DEEPEN, OR PLUG BACK

1a. TYPE OF WORK

DRILL ☒

ARTESIA, OFFICE

DEEPEN ☐PLUG BACK ☐

b. TYPE OF WELL

OIL
WELL ☒GAS
WELL ☐OTHER ☐SINGLE
ZONE ☒MULTIPLE
ZONE ☐

2. NAME OF OPERATOR

J. Ray Stewart ✓

3. ADDRESS OF OPERATOR

P. O. Box 451, Midland, Texas 79702

4. LOCATION OF WELL (Report location clearly and in accordance with any State requirements.*)

At surface 1980' FNL & 660' FWL SW/4 NW/4

At proposed prod. zone Same

14. DISTANCE IN MILES AND DIRECTION FROM NEAREST TOWN OR POST OFFICE*

10 miles southeast of Malaga, N.M.

15. DISTANCE FROM PROPOSED*
LOCATION TO NEAREST
PROPERTY OR LEASE LINE, FT.

(Also to nearest drlg. unit line, if any)

660' West

18. DISTANCE FROM PROPOSED LOCATION*
TO NEAREST WELL, DRILLING, COMPLETED,
OR APPLIED FOR, ON THIS LEASE, FT.

1320' S

16. NO. OF ACRES IN LEASE

960

19. PROPOSED DEPTH

3800'

17. NO. OF ACRES ASSIGNED
TO THIS WELL

40

20. ROTARY OR CABLE TOOLS

Rotary

21. ELEVATIONS (Show whether DF, RT, GR, etc.)

3195.6' GL

22. APPROX. DATE WORK WILL START*

November 26, 1983

23. PROPOSED CASING AND CEMENTING PROGRAM

SIZE OF HOLE	SIZE OF CASING	WEIGHT PER FOOT	SETTING DEPTH	QUANTITY OF CEMENT
12 1/2"	8 5/8"	23.0#	750'±	625 sx (Circulate)
7 7/8"	4 1/2"	10.5#	Total Depth	275 sx

Posted APR 9
RD-1041 Book
12-2-83

Proposed plans are to drill through the Delaware formation and test for possible commercial production.

BOP sketch is attached.

NOV 28 1983

IN ABOVE SPACE DESCRIBE PROPOSED PROGRAM: If proposal is to deepen or plug back, give data on present productive zone and proposed new productive zone. If proposal is to drill or deepen directionally, give pertinent data on subsurface locations and measured and true vertical depths. Give blowout preventer program, if any.

24.

SIGNED

Harry W. Franklin

TITLE

Agent

DATE

11/21/83

(This space for Federal or State office use)

PERMIT NO.

APPROVAL DATE

APPROVED BY

TITLE

DATE

CONDITIONS OF APPROVAL, IF ANY:

APPROVAL SUBJECT TO
GENERAL REQUIREMENTS AND
SPECIAL STIPULATIONS
ATTACHED

NEW MEXICO OIL CONSERVATION COMMISS
WELL LOCATION AND ACREAGE DEDICATION PLAT

Form C-102
Supersedes C-128
Effective 1-1-65

All distances must be from the outer boundaries of the Section.

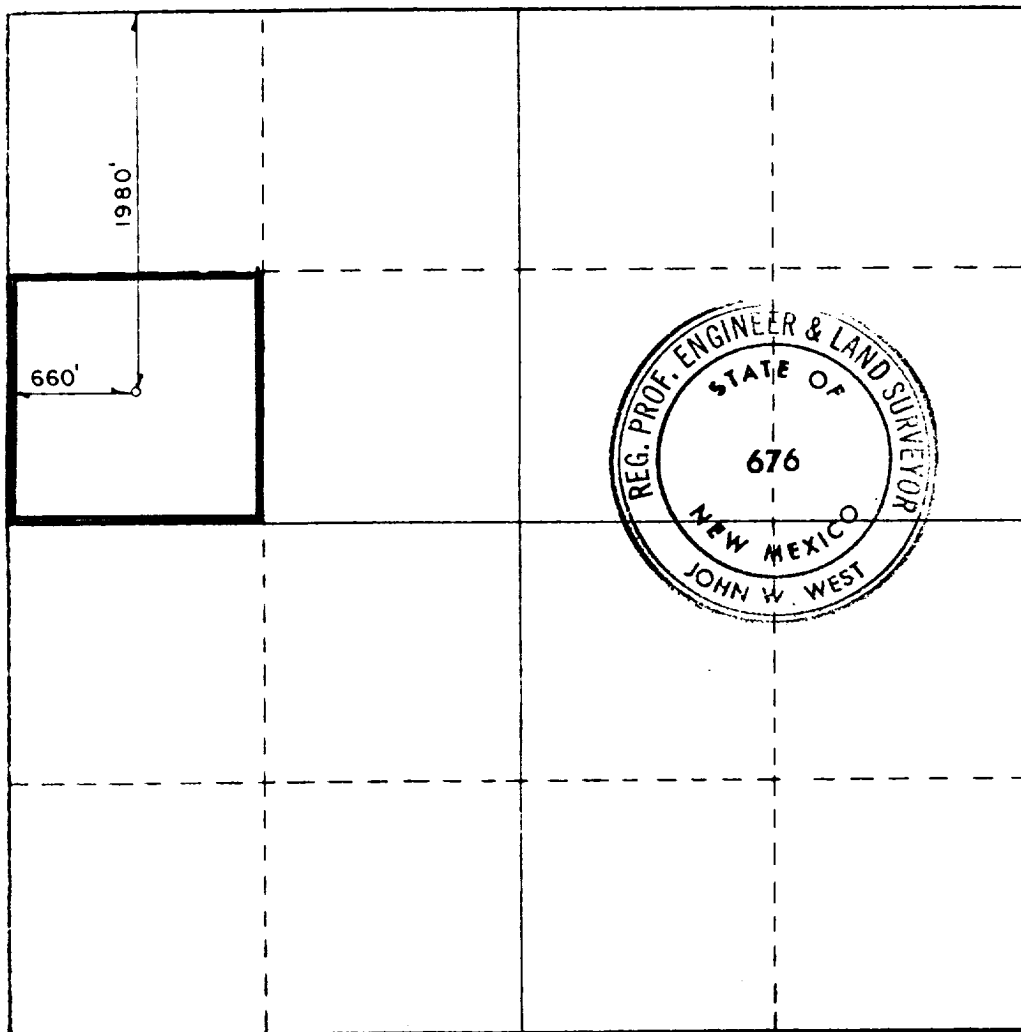
Operator J. RAY STEWART		Lease POKER LAKE UNIT		Well No. 61	
Tract Letter E	Section 17	Township 25S	Range 30E	County EDDY	
Actual Footage Location of Well:					
1980 feet from the NORTH line and		660 feet from the WEST line			
Ground Level Elev. 3195.6	Producing Formation Delaware		Pool <i>Corral Canyon Delaware</i> Poker Lake Unit	Dedicated Acreage: 40 Acres	

1. Outline the acreage dedicated to the subject well by colored pencil or hachure marks on the plat below.
2. If more than one lease is dedicated to the well, outline each and identify the ownership thereof (both as to working interest and royalty).
3. If more than one lease of different ownership is dedicated to the well, have the interests of all owners been consolidated by communitization, unitization, force-pooling, etc?

☐ Yes ☐ No If answer is "yes," type of consolidation _____

If answer is "no," list the owners and tract descriptions which have actually been consolidated (Use reverse side of this form if necessary.) _____

No allowable will be assigned to the well until all interests have been consolidated (by communitization, unitization, forced-pooling, or otherwise) or until a non-standard unit, eliminating such interests, has been approved by the Commission.



CERTIFICATION

I hereby certify that the information contained herein is true and complete to the best of my knowledge and belief.

Name *Curry W. Frankles*
Position _____
Agent _____
Company _____
J. Ray Stewart
Date
11/21/83

I hereby certify that the well location shown on this plat was plotted from field notes of actual surveys made by me or under my supervision, and that the same is true and correct to the best of my knowledge and belief.

Date Surveyed
11/18/83
Registered Professional Engineer and/or Land Surveyor

John W. West
Certificate No. JOHN W. WEST, 676
RONALD J. EIDSON, 3239



SUPPLEMENTAL DRILLING DATA

J. Ray Stewart
Poker Lake Unit No. 61
1980' FNL & 660' FWL
Sec. 17, T25S, R30E
Eddy County, N.M.

Lease No. LC - 064894 - A

1. Surface Formation: Alluvium

2. Estimated Geological Marker Tops:

Rustler	650'	Delaware 'SS'	3640'
Deleware 'LS'	3610'	Ramsey 'SS'	3670'

3. Mineral Bearing Formation: Delaware - oil

4. Proposed Casing and Cement Program:

8 5/8" Casing - Set approximately 750', 23.0#, J-55, ST&C casing and cement with 625 sacks cement to surface.

4 1/2" Casing - Set 4 1/2", 10.5#, J-55, ST&C casing to total depth and cement with 275 sacks of cement.

5. Pressure Control Equipment: A 2000 psi working pressure BOP will be installed after 8 5/8" casing is set and cemented.

6. Proposed Mud Program:

0 - 750'	Fresh water gel with lime
750 - 3500'	Brine water
3500 - 3800'	Brine water with starch to control water loss to less than 20 cc.

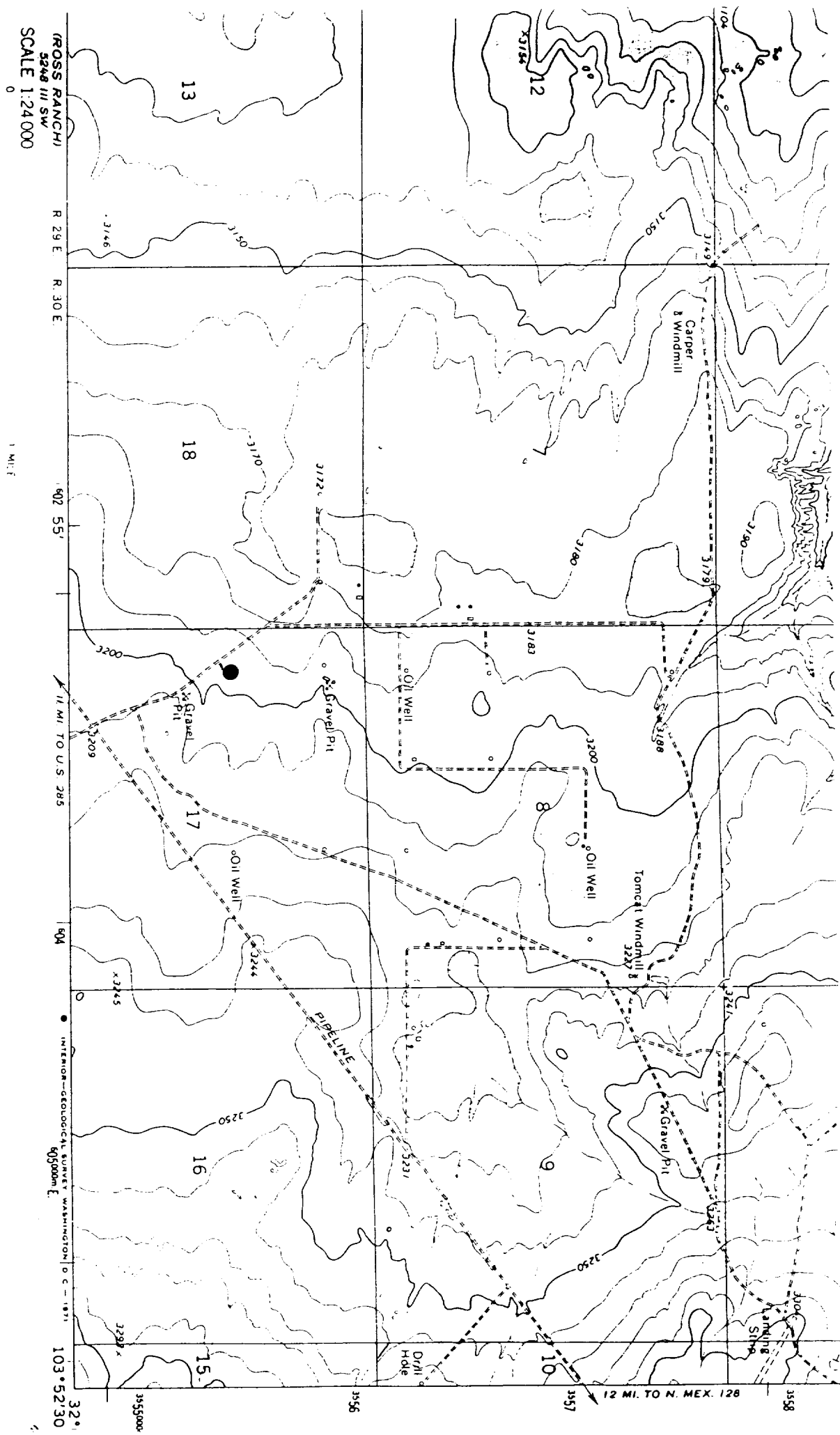
7. Auxiliary Equipment: A kelly cock will be installed on the rig floor while drilling operations are in progress.

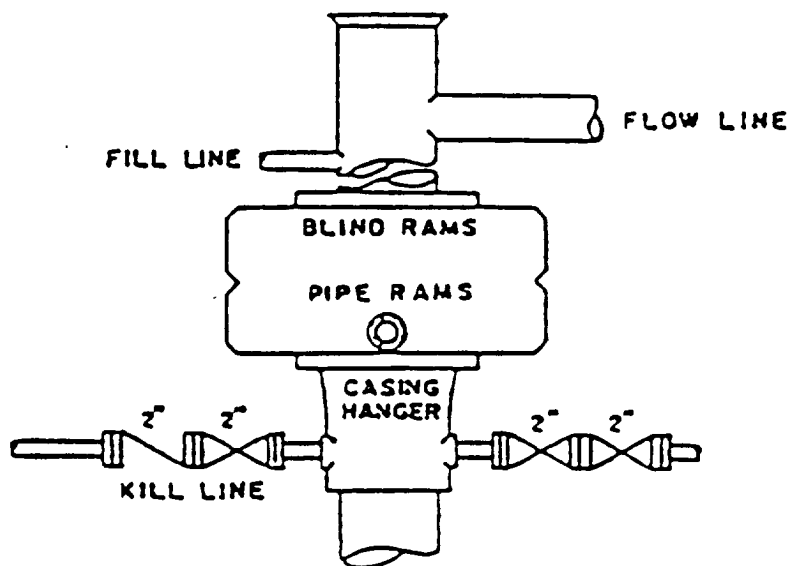
8. Testing, Logging, and Coring Program:

Testing: None anticipated
Logging: GR-BHC
Coring : None anticipated

9. Abnormal Pressures or Temperature Zones: No abnormal pressures or temperature zones are anticipated.

10. Anticipated Starting Date: Start drilling by November 26, 1983. Drilling should be completed within 7-8 days.





BOP STACK

SERIES 600
DEPTH INTERVAL
BELOW 8-5/8" CASING SEAT

BOP ARRANGEMENT

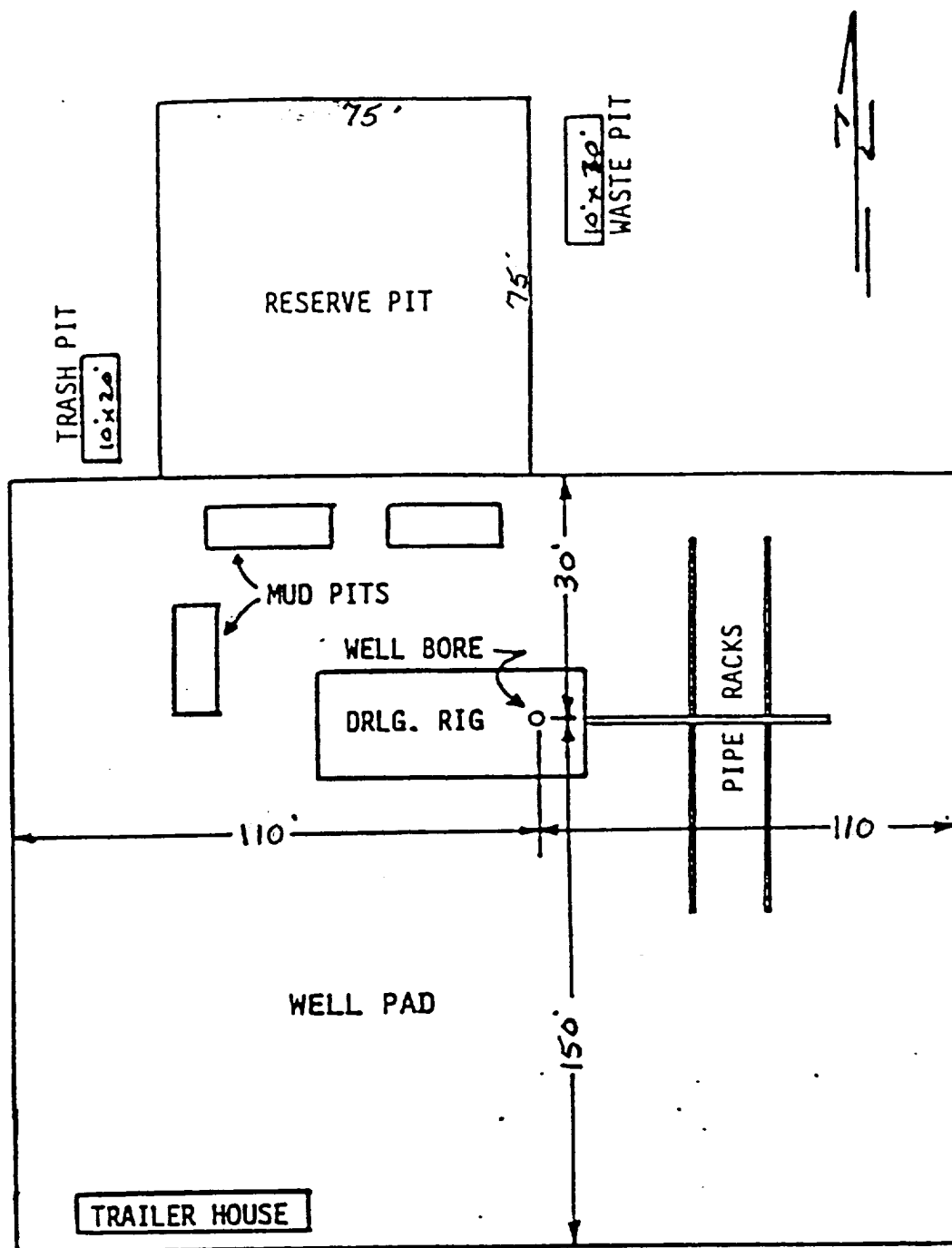


EXHIBIT "C"

DRILLING RIG LAYOUT
SCALE: None