

UNITED STATES
DEPARTMENT OF THE INTERIOR
GEOLOGICAL SURVEY
NEW OIL CONS. COMMISSION
Drawer DD
Artesia, NM 88210

APPLICATION FOR PERMIT TO DRILL, DEEPEN, OR PLUG BACK

1a. TYPE OF WORK

DRILL ☒DEEPEN ☐PLUG BACK ☐

b. TYPE OF WELL

OIL

WELL ☒

GAS

WELL ☐OTHER ☐

2. NAME OF OPERATOR

EXXON CORPORATION ✓

3. ADDRESS OF OPERATOR

P O Box 1600, Midland, TX 79702

4. LOCATION OF WELL (Report location clearly and in accordance with any State requirements.)

At surface

1980' FSL & 1980' FWL of Section

At proposed prod. zone

14. DISTANCE IN MILES AND DIRECTION FROM NEAREST TOWN OR POST OFFICE*

8 miles East from Loving

15. DISTANCE FROM PROPOSED*

LOCATION TO NEAREST

PROPERTY OR LEASE LINE, FT.

(Also to nearest drlg. unit line, if any) 1980' lse. line

18. DISTANCE FROM PROPOSED LOCATION*

TO NEAREST WELL, DRILLING COMPLETED,

OR APPLIED FOR, ON THIS LEASE, FT.

660' dlg. line

1.1 miles

NE to #3

16. NO. OF ACRES IN LEASE

2080

19. PROPOSED DEPTH

7000'

17. NO. OF ACRES ASSIGNED
TO THIS WELL

40

20. ROTARY OR CABLE TOOLS

Rotary

21. ELEVATIONS (Show whether DF, RT, GR, etc.)

3010' GR

22. APPROX. DATE WORK WILL START*

8-15-83

23.

PROPOSED CASING AND CEMENTING PROGRAM

SIZE OF HOLE	SIZE OF CASING	WEIGHT PER FOOT	SETTING DEPTH	QUANTITY OF CEMENT
17 1/2"	13 3/8"	54.5#	600'	500 SX CIRCULATE
11 or 12 1/4"	8 5/8"	24#	2900'	1000 SX CIRCULATE
7 7/8"	5 1/2"	17#	7000'	1700 SX

IN ABOVE SPACE DESCRIBE PROPOSED PROGRAM: If proposal is to deepen or plug back, give data on present productive zone and proposed new productive zone. If proposal is to drill or deepen directionally, give pertinent data on subsurface locations and measured and true vertical depths. Give blowout preventer program, if any.

24.

SIGNED

Melba Knippling

TITLE UNIT HEAD

DATE July 26, 1983

(This space for Federal or State office use)

PERMIT NO.

APPROVAL DATE

'Orig. Sgd.' Earl R. Cunningham

District Manager

APPROVED BY

TITLE

DATE

CONDITIONS OF APPROVAL, IF ANY:

DEC 20 1983

Application EXPIRED

APPROVAL SUBJECT TO
GENERAL REQUIREMENTS AND
SPECIAL STIPULATIONSRECEIVED
AUG 1 10 12 AM '83
BUREAU OF LAND MANAGEMENT
ROSSELL DISTRICTPosted A M
12-30-83

Exxon Lse. No. _____ MEXICO OIL CONSERVATION COMMISSION
State Lse. No. _____ WELL LOCATION AND ACREAGE DEDICATION PLAT
Federal Lse. No. _____ All distances must be from the outer boundaries of the Section.

RECEIVED BY

DEC 22 1983

Form C-102
Supersedes C-128
Effective 1-1-65

O. C. D.

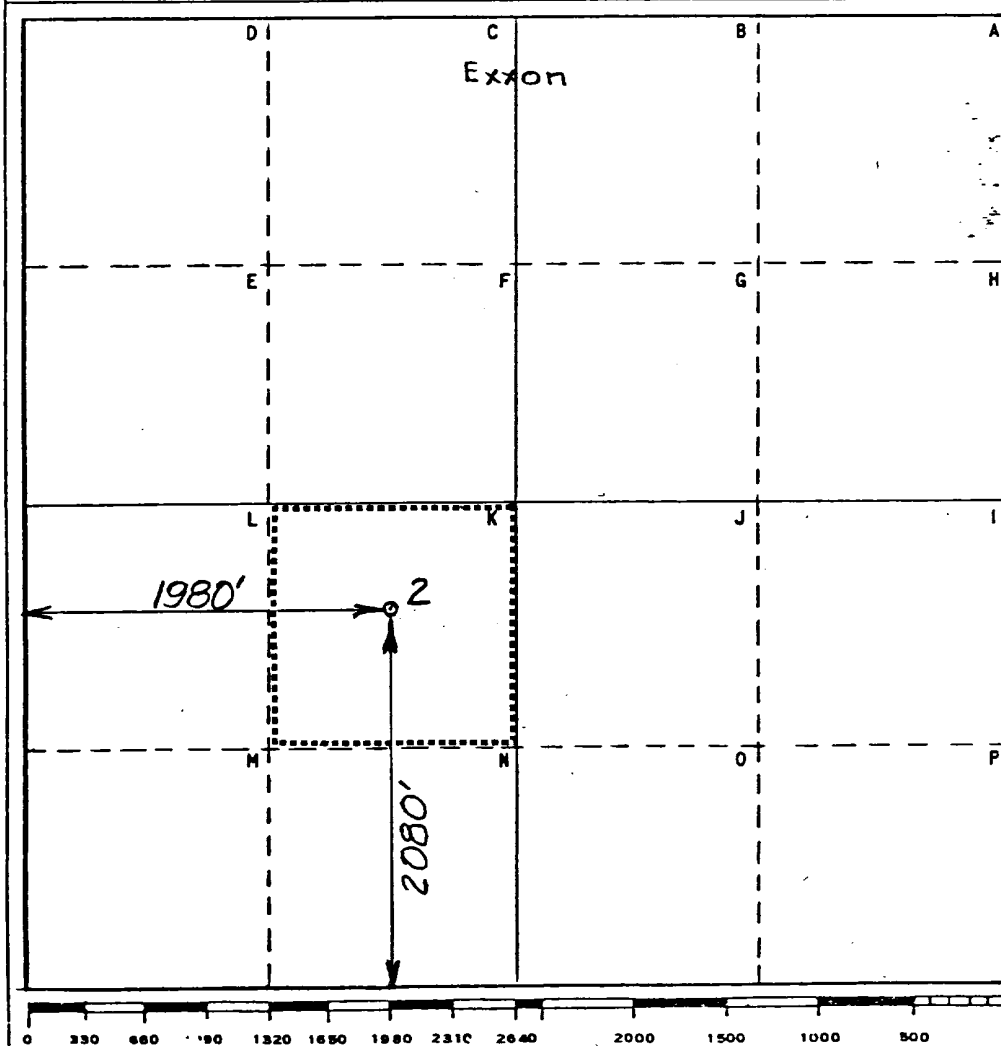
Operator Exxon Corporation		Lease BLAKEMORE ESTATE FEDERAL		Well No. #2	
Unit Letter K	Section 33	Township 23S	Range 29E	County EDDY	
Actual Footage Location of Well: 2080 feet from the SOUTH line and 1980 feet from the WEST line					
Ground Level Elev. 3010'	Producing Formation DELAWARE	Pool LAGUNA GRANDE	Dedicated Acreage: 40 Acres		

1. Outline the acreage dedicated to the subject well by colored pencil or hachure marks on the plat below.
2. If more than one lease is dedicated to the well, outline each and identify the ownership thereof (both as to working interest and royalty).
3. If more than one lease of different ownership is dedicated to the well, have the interests of all owners been consolidated by communitization, unitization, force-pooling, etc?

☐ Yes ☐ No If answer is "yes," type of consolidation _____

If answer is "no," list the owners and tract descriptions which have actually been consolidated. (Use reverse side of this form if necessary.) _____

No allowable will be assigned to the well until all interests have been consolidated (by communitization, unitization, forced-pooling, or otherwise) or until a non-standard unit, eliminating such interests, has been approved by the Commission.



CERTIFICATION

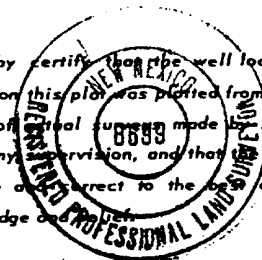
I hereby certify that the information contained herein is true and complete to the best of my knowledge and belief.

Name
Edgar Runkel
Position
UNIT HEAD

Company Exxon Corporation
Box 1600 Midland, Texas

Date
12-14-83

I hereby certify that the well location shown on this plat was plotted from field notes of actual survey made by me or under my supervision, and that the same is true and correct to the best of my knowledge and belief.



Date Surveyed
6-15-83

Registered Professional Engineer
and/or Land Surveyor

John Wallis

Certificate No.
8699

8 Miles EAST of LOVING, New Mexico

C.E. Sec. File No. WA-8166

BLOWOUT PREVENTER SPECIFICATION
EQUIPMENT DESCRIPTION

TYPE II-C

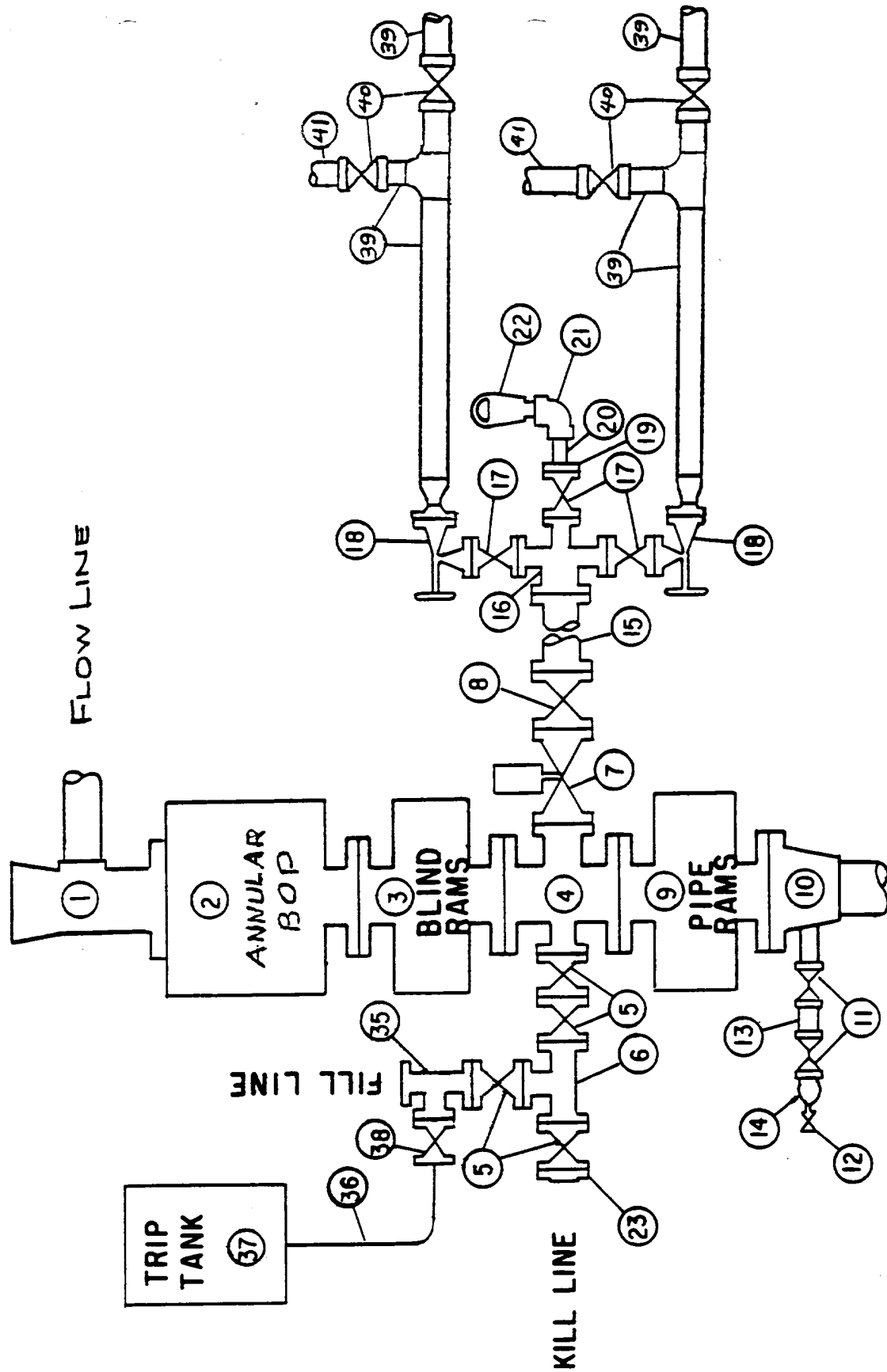
All equipment should be at least 2000 psi WP or higher unless otherwise specified.

1. Bell nipple.
2. Hydril or Shaffer bag type preventer.
3. Ram type pressure operated blowout preventer with blind rams.
4. Flanged spool with one 4-inch and one 2-inch (minimum) outlet.
5. 2-inch (minimum) flanged plug or gate valve.
6. 2-inch by 2-inch by 2-inch (minimum) flanged tee.
7. 4-inch pressure operated gate valve.
8. 4-inch flanged gate or plug valve.
9. Ram type pressure operated blowout preventer with pipe rams.
10. Flanged type casing head with one side outlet (furnished by Exxon).
11. 2-inch threaded (or flanged) plug or gate valve (furnished by Exxon).
Flanged on 5000# WP, threaded on 3000# WP or less.
12. Needle valve (furnished by Exxon).
13. 2-inch nipple (furnished by Exxon).
14. Tapped bull plug (furnished by Exxon).
15. 4-inch flanged spacer spool.
16. 4-inch by 2-inch by 2-inch by 2-inch flanged cross.
17. 2-inch flanged plug or gate valve.
18. 2-inch flanged adjustable choke.
19. 2-inch threaded flange.
20. 2-inch XXH nipple.
21. 2-inch forged steel 90° Ell.
22. Cameron (or equal.) threaded pressure gage.
23. Threaded flange.
35. 2-inch flanged tee.
36. 3-inch (minimum) hose. (Furnished by Exxon).
37. Trip tank. (Furnished by Exxon).
38. 2-inch flanged plug or gate valve.
39. 2-1/2-inch pipe, 300' to pit, anchored.
40. 2-1/2-inch SE valve.
41. 2-1/2-inch line to steel pit or separator.

NOTES:

1. Items 3, 4 and 9 may be replaced with double ram type preventer with side outlets between the rams.
2. The two valves next to the stack on the fill and kill line to be closed unless drill string is being pulled.
3. Kill line is for emergency use only. This connection shall not be used for filling.
4. Replacement pipe rams and blind rams shall be on location at all times.
5. Only type U, LWS and QRC ram type preventers with secondary seals are acceptable for 5000 psi WP and higher BOP stacks.
6. Type E ram-type BOP's with factory modified side outlets may be used on 3000 psi or lower WP BOP stacks.

MIDLAND DRILLING ORGANIZATION BLOWOUT PREVENTER SPECIFICATION TYPE II - C



10 POINT PLAN
Blakemore State Federal #2
Section 33, T23S, T29E
Eddy County, New Mexico
July 18, 1983

1. The geologic name of the surface formation: Recent

2. The estimated tops of important geologic markers:

Delaware Mt. Grp. : 2900'
Bone Spring : 6600'

3. The estimated depths at which anticipated water, oil, gas, or other mineral bearing formations are expected to occur:

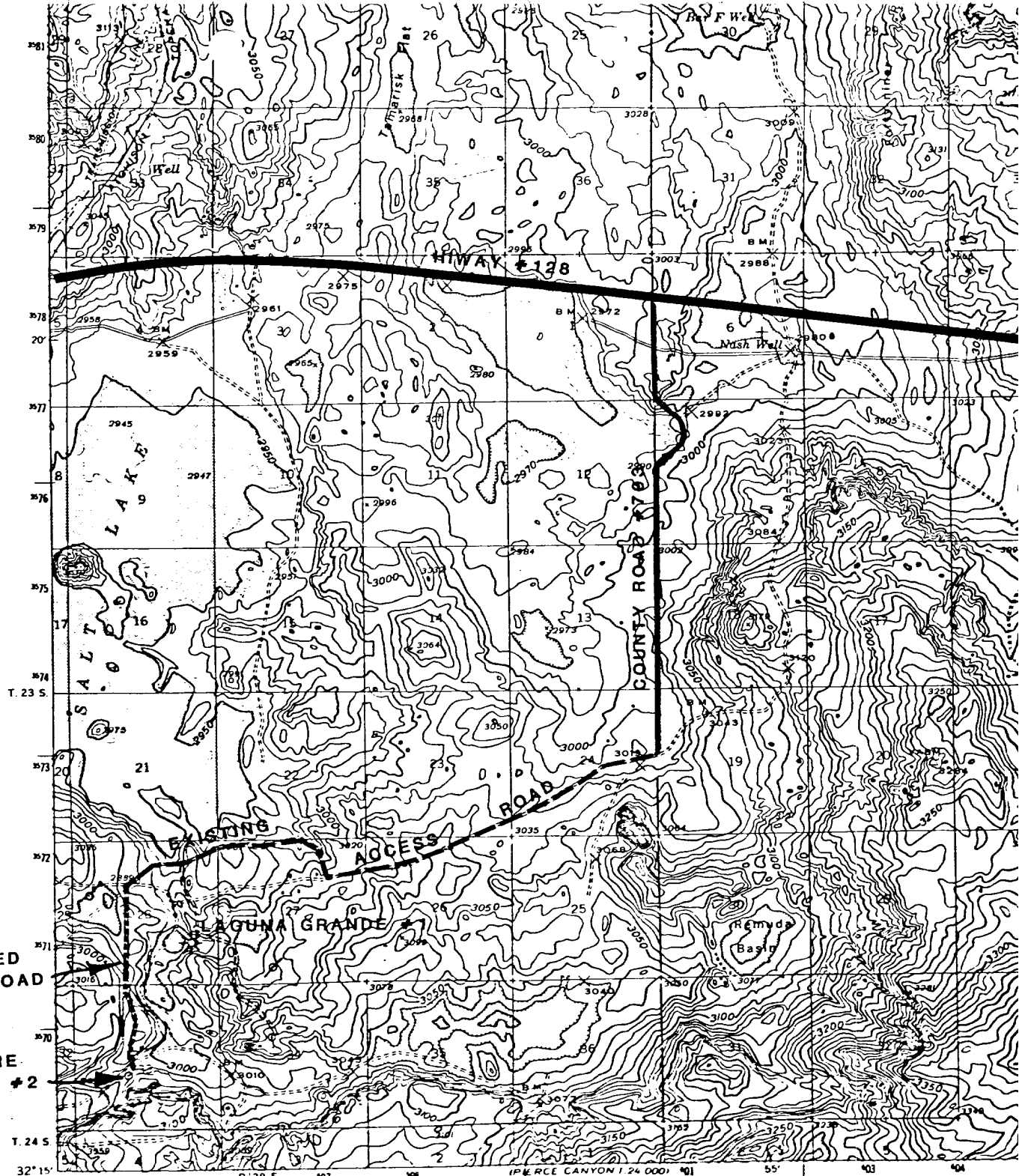
Deepest FW : 500'
Oil
Bone Spring : 6600'

4. Proposed casing program:

<u>STRING</u>	<u>SIZE</u>	<u>WEIGHT/GRADE</u>	<u>CONDITION</u>	<u>DEPTH INTERVAL</u>
Conductor	20"	94#/H-40	New	0- 40'
Surface	13-3/8"	54.5#/K-55	New	0- 600'
Intermediate	8-5/8"	32#/K-55	New	0-2900'
Production	5-1/2"	17#/K-55	New	0-7000'

5. Minimum specifications for pressure control equipment:

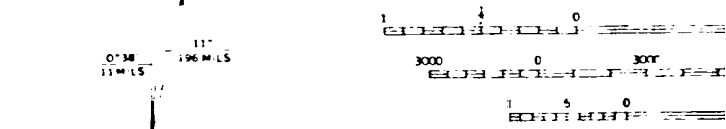
- A. Wellhead equipment - Threaded type, 2000 psi WP for 13-3/8" x 8-5/8" x 5-1/2" casing program with 2-7/8" tubing hanger.
- B. Blowout preventers - Refer to attached drawings and lists of equipment titled "Type II-C" for description of BOP stacks and choke manifold.
- C. BOP control unit - Unit will be hydraulically operated and have at least two control stations.
- D. Testing - Upon installation, the Type II-C BOP's for the 13-3/8" surface casing and the 8-5/8" intermediate casing will be tested to a low pressure (200-300 psi) and to a high pressure of 2000 psi. Casing rams will be body tested in a like manner. An operational test of the blowout preventers will be performed on each round trip, (but not more than once each day); the annular and pipe rams preventers will be closed on drill pipe and the blind rams will be closed while pipe is out of the hole.



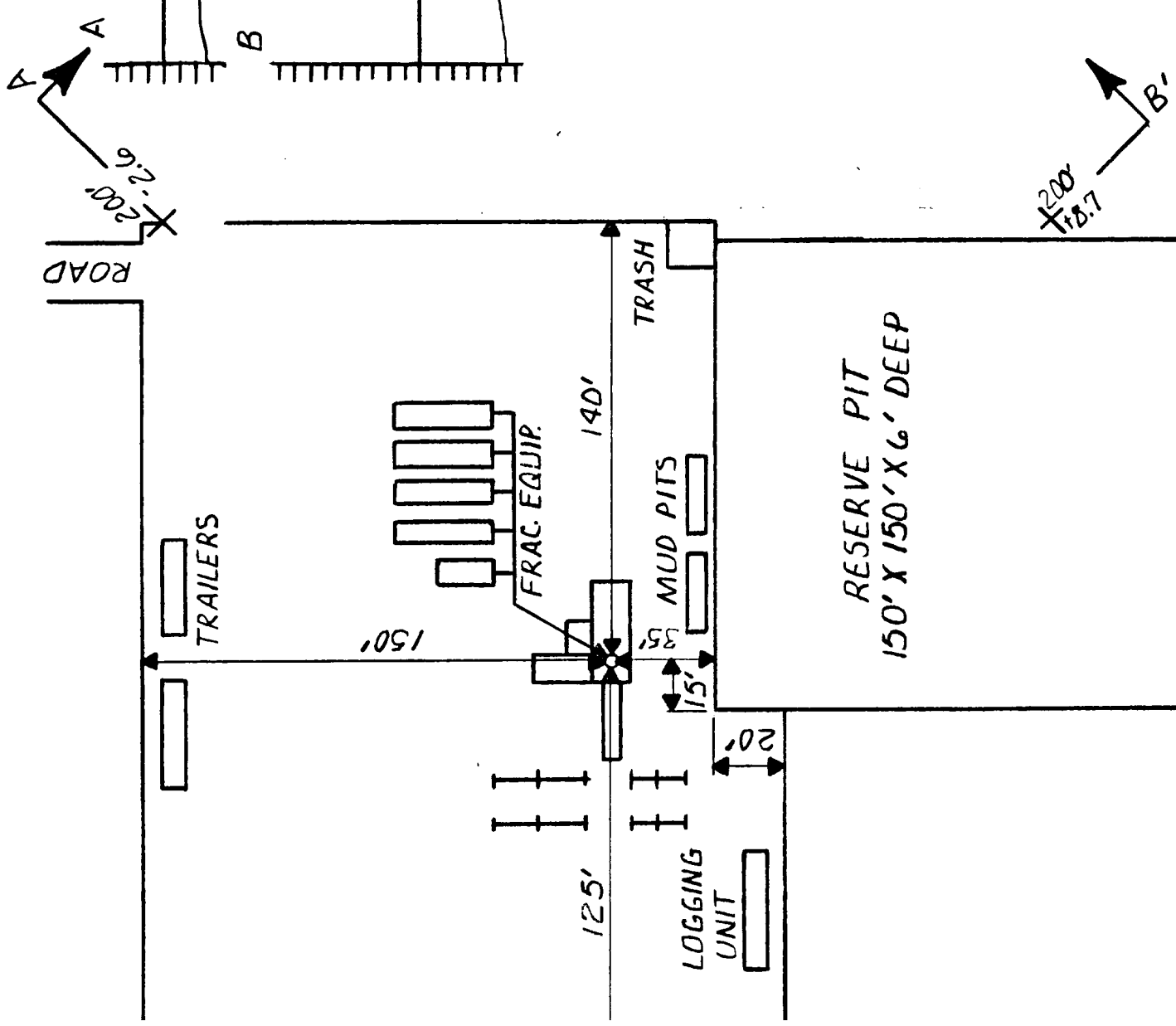
Topography by Max J. Gleissner, R. O. Davis,
M. C. McClellan, C. E. Walker, R. E. Isto, R. E. Mann,
N. B. Wright, J. A. Maier, Harry Parker,
and Lower Pecos River Survey

Surveyed in 1935 and 1939

EXHIBIT "A"
EXXON COMPANY, USA
BLAKEMORE ESTATE FEDERAL #2



FOR SALE BY U. S. GEOLOGICAL SURVEY
A FOLDER DESCRIBING THIS MAP



1980 FSL
1980 FWL

EXHIBIT "B"

WELL SITE LAYOUT

SCALE: 1"=50'

WEST

BI AKEMORE FSTATE FEDERAL #2

EXXON COMPANY, INC.



United States Department of the Interior

BUREAU OF LAND MANAGEMENT

Roswell District Office

P. O. Box 1397

Roswell, New Mexico 88201

IN REPLY
REFER TO:

December 20, 1983

RECEIVED BY

DEC 22 1983

O. C. D.

ARTESIA, OFFICE

Exxon Corporation
P.O. Box 1600
Midland, TX 79702

Dear Sir:

Your application for Permit to Drill well No. 2 Blakemore Estate Federal in the NE $\frac{1}{4}$ SW $\frac{1}{4}$, sec. 33, T. 23 S., R. 29 E., Eddy County, New Mexico, lease NM-19848, to a depth of 7,000 feet to test the Delaware formation in the oil - potash area, is hereby approved as amended by stipulations attached to the application.

One copy of the application is returned herewith. Please notify the Bureau of Land Management office checked on the attached special stipulation in sufficient time for a representative to witness all cementing operations.

Sincerely yours,

'Orig. Sgd.' Earl R. Cunningham

District Manager

Enclosure

cc:
NMOCD (2)