

UNITED STATES  
DEPARTMENT OF THE INTERIOR

## GEOLOGICAL SURVEY

## APPLICATION FOR PERMIT TO DRILL, DEEPEN, OR PLUG BACK

## 1a. TYPE OF WORK

DRILL ☒DEEPEN ☐PLUG BACK ☐

## b. TYPE OF WELL

OIL  
WELL ☒GAS  
WELL ☐OTHER ☐SINGLE  
ZONE ☐MULTIPLE  
ZONE ☐

## 2. NAME OF OPERATOR

H &amp; S Oil Company ✓

## 3. ADDRESS OF OPERATOR

216 American Home Bldg. - Artesia, N.M. 88210

## 4. LOCATION OF WELL (Report location clearly and in accordance with any State requirements.\*)

At surface

460' FNL 460' FWL Section 34-T18S-R30E

At proposed prod. zone

## 14. DISTANCE IN MILES AND DIRECTION FROM NEAREST TOWN OR POST OFFICE\*

Approximately 7 miles south of Loco Hills, NM

## 10. DISTANCE FROM PROPOSED\*

LOCATION TO NEAREST  
PROPERTY OR LEASE LINE, FT.  
(Also to nearest drlg. unit line, if any)

## 16. NO. OF ACRES IN LEASE

560

18. DISTANCE FROM PROPOSED LOCATION\*  
TO NEAREST WELL, DRILLING, COMPLETED,  
OR APPLIED FOR, ON THIS LEASE, FT.

## 19. PROPOSED DEPTH

4600'

17. NO. OF ACRES ASSIGNED  
TO THIS WELL

40

## 20. ROTARY OR CABLE TOOLS

Rotary

## 21. ELEVATIONS (Show whether DF, RT, GR, etc.)

3451.5' GA

## 22. APPROX. DATE WORK WILL START\*

December 1983

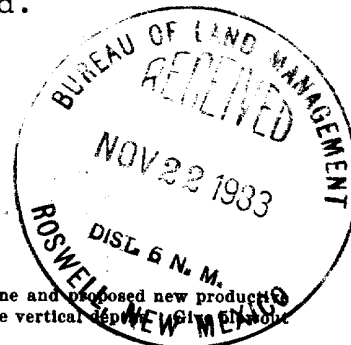
## 23.

## PROPOSED CASING AND CEMENTING PROGRAM

SIZE OF HOLE	SIZE OF CASING	WEIGHT PER FOOT	SETTING DEPTH	QUANTITY OF CEMENT
11 1/4"	8 5/8"	24#	600'	Circulate
7 7/8"	5 1/2"	14#	4600'	Circulate

Estimated formation tops: Queen 2800', Penrose 3020', Grayburg 3280' & Delaware 3820'. Drilling fluid will be brine water with small amount of mud additive from 1800' to assist in sample clarity. Well will be logged open hole with Compensated Gamma Ray Neutron. No abnormal pressures or hazards have been encountered in this field.

RECEIVED BY  
JAN 03 1984  
O. C. D.  
ARTESIA, OFFICE



IN ABOVE SPACE DESCRIBE PROPOSED PROGRAM: If proposal is to deepen or plug back, give data on present productive zone and proposed new productive zone. If proposal is to drill or deepen directionally, give pertinent data on subsurface locations and measured and true vertical depth. If proposal is to install a plugback or preventer program, if any.

## 24.

SIGNED

TITLE Partner

DATE 11/21/83

(This space for Federal or State office use)

PERMIT NO.

APPROVAL DATE

District Manager

APPROVED BY Orig. Sgd. Earl R. Cunningham

TITLE

DATE DEC 29 1983

CONDITIONS OF APPROVAL, IF ANY:

APPROVAL SUBJECT TO  
GENERAL REQUIREMENTS AND  
SPECIAL STIPULATIONS  
ATTACHED

Noted & P.D.  
JD-1 & W/Book  
1-6-84

**NEW MEXICO OIL CONSERVATION COMMISSION  
WELL LOCATION AND ACREAGE DEDICATION PLAT**

Form C-102  
Supersedes C-128  
Effective 1-1-65

All distances must be from the outer boundaries of the Section.

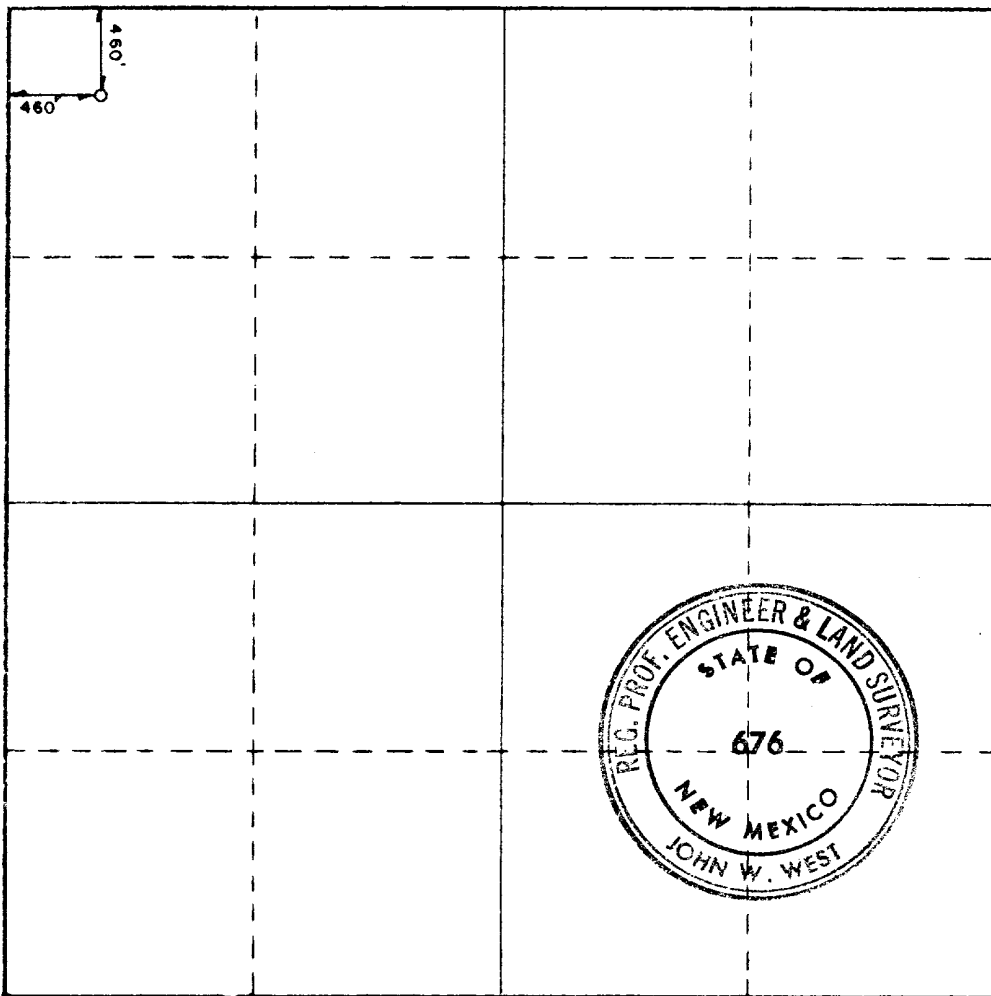
Operator <b>H &amp; S OIL CO.</b>			Lease <b>MC CLAY</b>		Well No. <b>14</b>
Unit Letter <b>D</b>	Section <b>34</b>	Township <b>18S</b>	Range <b>30E</b>	County <b>EDDY</b>	
Actual Footage Location of Well: <b>460</b> feet from the <b>NORTH</b> line and <b>460</b> feet from the <b>WEST</b> line					
Ground Level Elev. <b>3451.5</b>	Producing Formation <b>Delaware</b>		Pool <i>North</i> <b>Penon-8-G</b>		Dedicated Acreage: <b>40</b> Acres

1. Outline the acreage dedicated to the subject well by colored pencil or hatchure marks on the plat below.
2. If more than one lease is dedicated to the well, outline each and identify the ownership thereof (both as to working interest and royalty).
3. If more than one lease of different ownership is dedicated to the well, have the interests of all owners been consolidated by communitization, unitization, force-pooling, etc?

☐ Yes ☐ No If answer is "yes," type of consolidation \_\_\_\_\_

If answer is "no," list the owners and tract descriptions which have actually been consolidated. (Use reverse side of this form if necessary.) \_\_\_\_\_

No allowable will be assigned to the well until all interests have been consolidated (by communitization, unitization, forced-pooling, or otherwise) or until a non-standard unit, eliminating such interests, has been approved by the Commission.

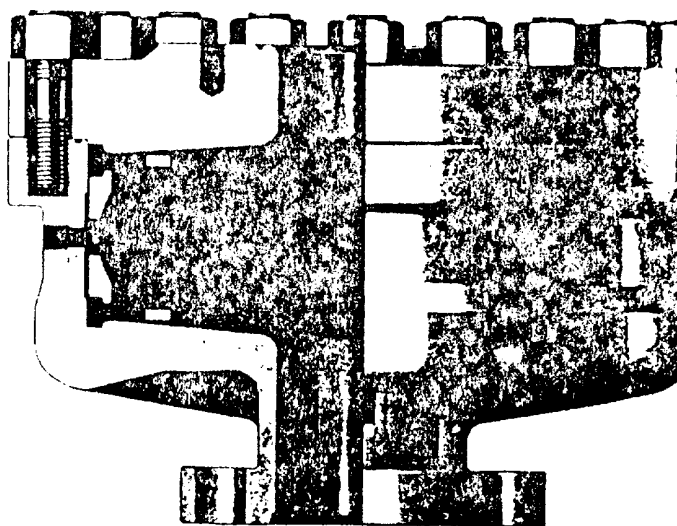


## REGAN BLOWOUT PREVENTERS

The Regan Torus Blowout Preventer is used primarily on production and workover rigs for well control up to 3000 PSI working pressure

### DESIGN FEATURES

- The Torus Preventer is designed for minimum height to facilitate its use with production and workover rigs.
- The rubber packer will conform to any object in the well bore. Sealing ability is not affected by minor damage to the inner bore.
- The packer will seal on open hole at full working pressure.
- The dual packer design increases the reliability of the preventer since the outer rubber is never exposed to the well bore. Under ordinary service, the outer packer is rarely replaced.



TORUS BLOWOUT PREVENTER  
PATENTED

### SPECIFICATIONS

Nominal Size	Test Pressure (psi)	DIMENSIONS (in.)			Weight (lb.)	End Flanges (1)	R/RX Ring Grooves	Side Outlet
		Outside Diameter	Thru Bore	Overall Height				
6	3000	27	7 1/4	19 1/4	1300	Nom. 6	45	None
	6000	29 1/4	7 1/4	21 1/4	1950	Nom. 6	45	2" L.P.
8	3000	34 1/4	9	25	2625	Nom. 8	49	None

(1) Bottom flange holes for use with either 2000 psi API-5B flange or used with obsolete 5000 psi flange. Top flange studded for 3000 psi flange unless otherwise noted.

### Exhibit 2

H & S Oil Company  
McClay No. 14  
Section 34-T18S-R30E  
Eddy County, NM  
LC-028978b

APPLICATION FOR DRILLING

H & S OIL COMPANY  
McClay No. 14  
460' FNL 460' FWL  
Section 34-T18S-R30E  
Eddy County, New Mexico

In conjunction with Form 9-331C, Application for Permit to Drill subject well, H & S Oil Company submits the following ten items of pertinent information in accordance with USGS requirements:

1. The geologic surface formation is Permian.
2. The estimated tops of geologic markers are as follows:

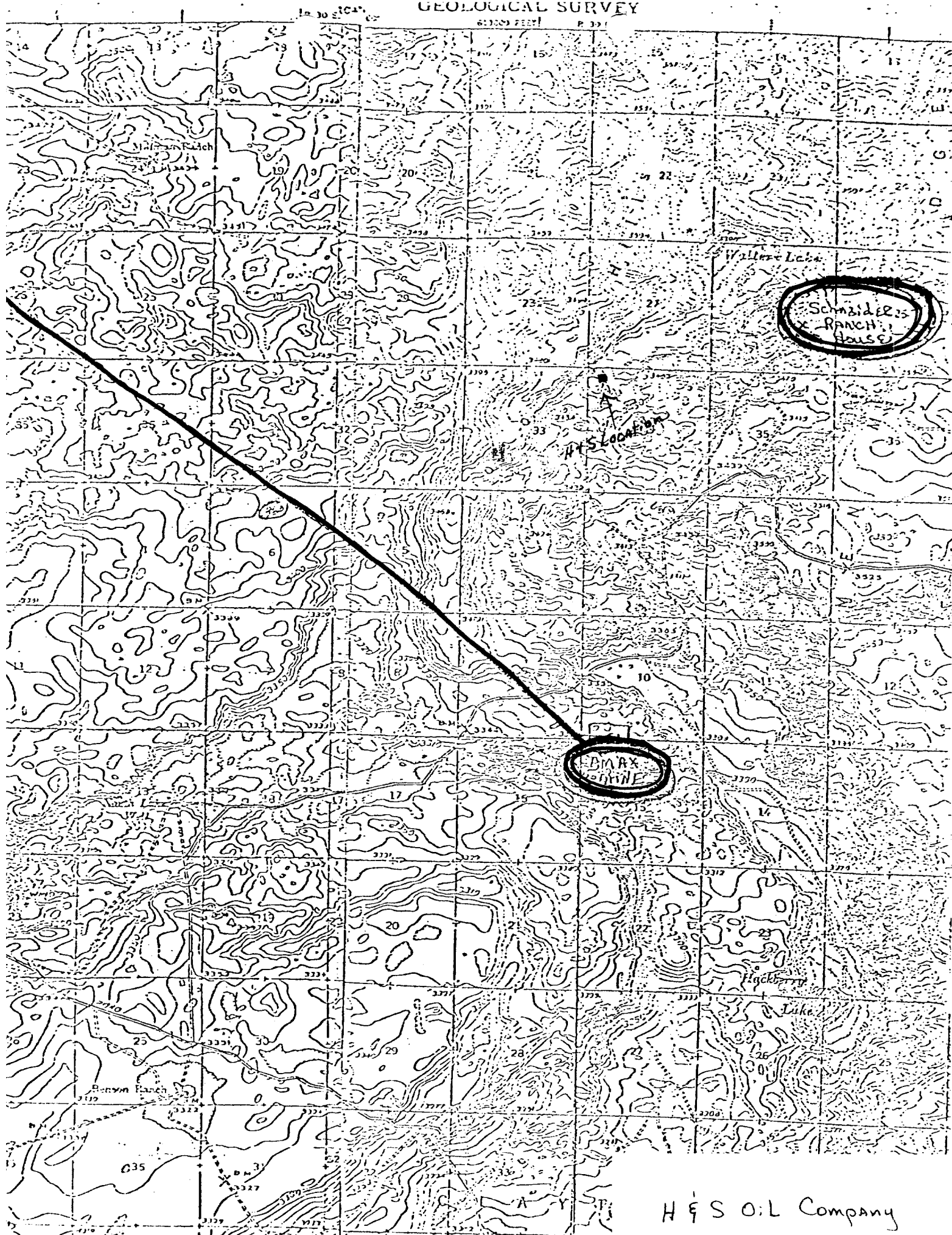
Queen	2790'
Grayburg	3148'
San Andres	3490'
Delaware	4540'
Base Delaware	5600'

3. The estimated depths at which anticipated water, oil or gas formations are expected to be encountered:

Water: Approximately 250' and 350'  
Oil or Gas: Queen: approximately 2790' to 3148'  
San Andres: approx. 3490' to 4540'  
Delaware: approx. 4540' to 5600'

4. Proposed Casing Program: See Form 9-331C
5. Pressure Control Equipment: See exhibit 2
6. Mud Program: See Form 9-331C
7. Auxiliary Equipment: See exhibit 3
8. Testing, Logging and Coring Programs:  

Logging: Electric Log Program, Compensated Neutron  
Compensated Density, & Micro Laterlog
9. No abnormal pressures or temperatures are anticipated.
10. Anticipated starting date: As soon as possible.



H & S Oil Company

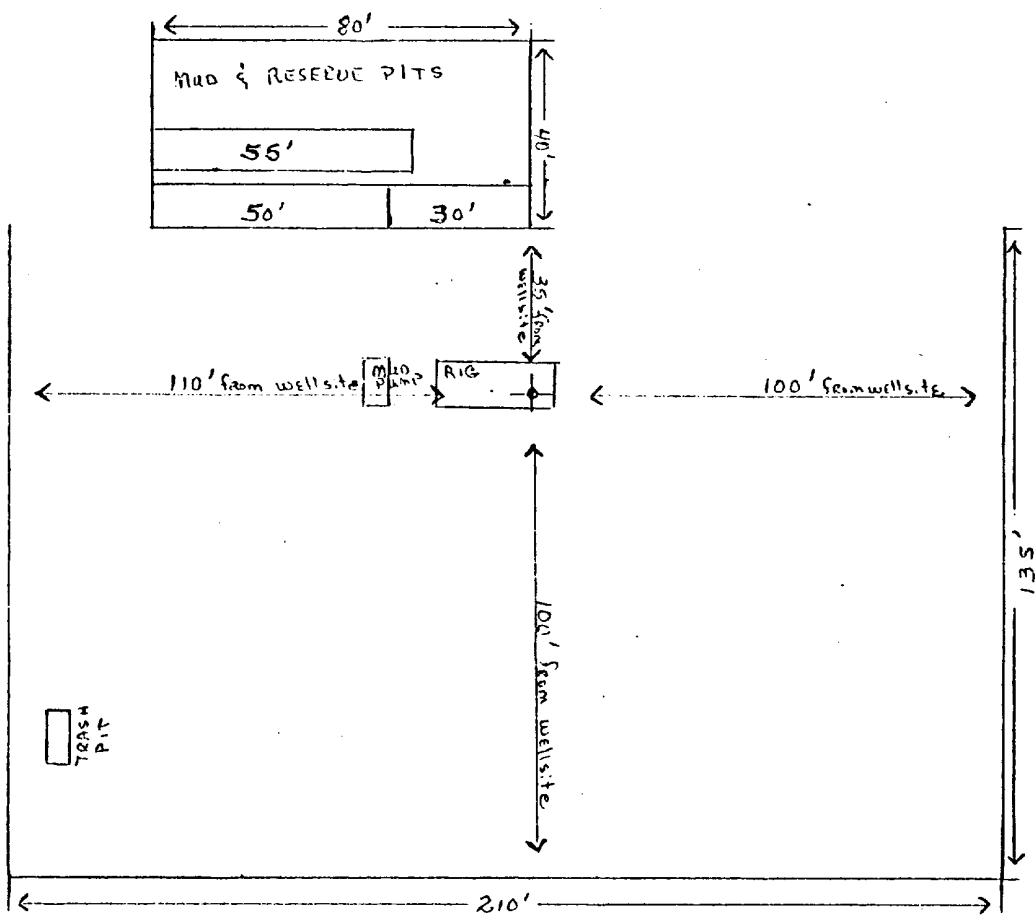
McClay No. 14  
LEASE No. NM 27276  
460' FNL 460' FWL  
Section 34-T18S-R30E  
Eddy County, New Mexico

Exhibit A

H & S Oil Company  
 McClay No. 14  
 LEASE No. NM27276  
 460' FNL 460' FWL  
 Section 34-T18S-R30E  
 Eddy County, New Mexico

Scale  $\frac{1}{2}" = 20'$

1N



DRILLING PAD - LEVELED AND CALICHD

PITS WILL BE DUG TO COVER GARBAGE AND TRASH, WHICH WILL BE KEPT IN CONTAINERS UNTIL WELL IS COMPLETED.

FIGURE 1