

NO. OF COPIES RECEIVED	
DISTRIBUTION	
SANTA FE	<input checked="" type="checkbox"/>
FILE	<input checked="" type="checkbox"/>
U.S.G.S.	<input checked="" type="checkbox"/>
LAND OFFICE	<input checked="" type="checkbox"/>
OPERATOR	<input checked="" type="checkbox"/>

P. O. BOX 2088
SANTA FE, NEW MEXICO 87501RECEIVED BY
FEB 24 1984
O. C. D.
ARTESIA, OFFICE

5A. Indicate Type of Lease

STATE ☒ FEE ☐5. State Oil & Gas Lease No.
V-690

APPLICATION FOR PERMIT TO DRILL, DEEPEN, OR PLUG BACK

a. Type of Work DRILL <input checked="" type="checkbox"/> DEEPEN <input type="checkbox"/> PLUG BACK <input type="checkbox"/>		7. Unit Agreement Name ---
b. Type of Well OIL WELL <input checked="" type="checkbox"/> GAS WELL <input type="checkbox"/> OTHER <input type="checkbox"/>		8. Farm or Lease Name New Mexico "DP" State
c. Name of Operator Exxon Corporation		9. Well No. 6
d. Address of Operator Box 1600, Midland, Texas 79702		10. Field and Pool, or Wildcat Hyalon Delaware Industrie - Avalon
e. Location of Well UNIT LETTER H LOCATED 1980 FEET FROM THE N LINE		11. Field and Pool, or Wildcat Hyalon Delaware Industrie - Avalon
f. Location of Well NO 660 FEET FROM THE E LINE OF SEC. 28 TWP. 20S RGE. 28E NMPM		12. County Eddy
19. Proposed Depth 5800'		19A. Formation Bone Spring
20. Rotary or C.T. Rotary		
21. Elevations (Show whether DF, RT, etc.) 3221.5' GR		21A. Kind & Status Plug. Bond Blanket
21B. Drilling Contractor Unknown		22. Approx. Date Work will start 3-15-84

3. PROPOSED CASING AND CEMENT PROGRAM

SIZE OF HOLE	SIZE OF CASING	WEIGHT PER FOOT	SETTING DEPTH	SACKS OF CEMENT	EST. TOP
26"	20"	94	40	25	Surface
17 1/2"	13 3/8"	48	600	350	Surface
11"	8 5/8"	24	2500	600	Surface
7 7/8"	5 1/2"	14 and 15.5	5800	700	Tie into inter- mediate csg.

Mud: 0-600' - FW Spud mud 8.4 - 8.6 ppg.
600-2500' - FW 8.4 - 8.8 ppg
2500 - 5800' - CBW 8.8 - 9.2 ppg

Diagrammatic sketch and specifications of BOP are attached.
BOP: Type IIC/2000 PSI

DRILLING UNDERWAY
150 DAYS
3-27-84

ABOVE SPACE DESCRIBE PROPOSED PROGRAM; IF PROPOSAL IS TO DEEPEN OR PLUG BACK, GIVE DATA ON PRESENT PRODUCTIVE ZONE AND PROPOSED NEW PRODUCTIVE ZONE. GIVE BLOWOUT PREVENTER PROGRAM, IF ANY.

I hereby certify that the information above is true and complete to the best of my knowledge and belief.

signed Michael Knippling Title Unit Head Date 2-21-84
(This space for State Use)

APPROVED BY Mike Walker TITLE OIL AND GAS INSPECTOR DATE FEB 27 1984

CONDITIONS OF APPROVAL, IF ANY:

None NMOCC in sufficient

3/8/84

Federal Lse. No. _____ All distances must be from the outer boundaries of the Section.

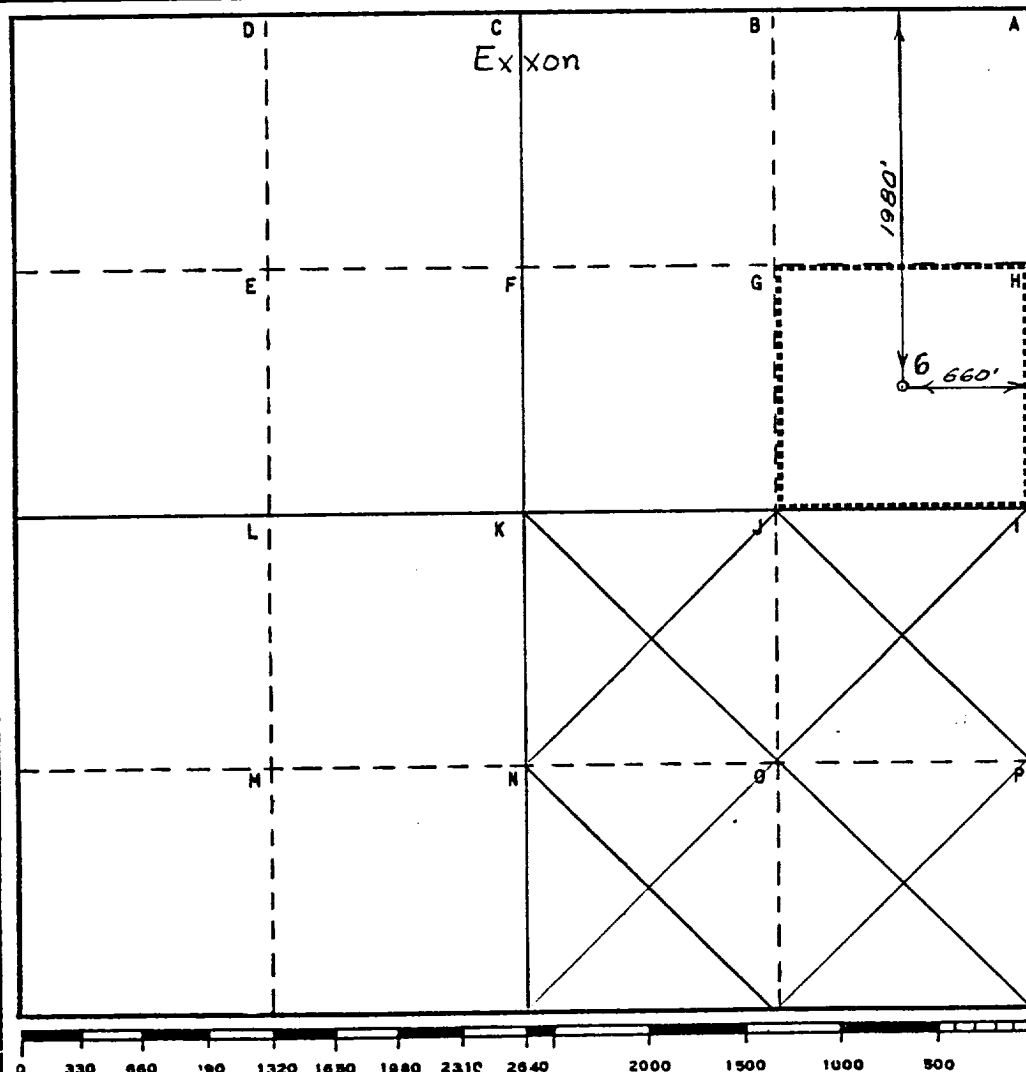
Operator Exxon Corporation		Lease NEW MEXICO "DP" STATE		Well No. 6
Unit Letter H	Section 28	Township 20S	Range 28E	County Eddy
Actual Footage Location of Well: 1980 feet from the North line and 660 feet from the East line				
Ground Level Elev. 3221.5'	Producing Formation Bone Spring	Pool Undesignated Avalon	Dedicated Acreage: 40 Acres	

1. Outline the acreage dedicated to the subject well by colored pencil or hachure marks on the plat below.
2. If more than one lease is dedicated to the well, outline each and identify the ownership thereof (both as to working interest and royalty).
3. If more than one lease of different ownership is dedicated to the well, have the interests of all owners been consolidated by communitization, unitization, force-pooling, etc?

☐ Yes ☐ No If answer is "yes," type of consolidation _____

If answer is "no," list the owners and tract descriptions which have actually been consolidated. (Use reverse side of this form if necessary.) _____

No allowable will be assigned to the well until all interests have been consolidated (by communitization, unitization, forced-pooling, or otherwise) or until a non-standard unit, eliminating such interests, has been approved by the Commission.



CERTIFICATION

I hereby certify that the information contained herein is true and complete to the best of my knowledge and belief.

Name
Debra Knippling

Position
UNIT HEAD

Company Exxon Corporation
Box 1600 Midland, Texas

Date
2-21-84

I hereby certify that the well location shown on this plat was plotted from field notes of actual surveys made by me or under my supervision, and that the same is true and correct to the best of my knowledge and belief.

Date Surveyed
1-31-84

Registered Professional Engineer
and/or Land Surveyor

W. J. Richmond
Certificate No.
6157

8 Miles North of Carlsbad, New Mexico

C.E. Sec. File No. WA-8140-E

BLOWOUT PREVENTER SPECIFICATION
EQUIPMENT DESCRIPTION

TYPE II-C

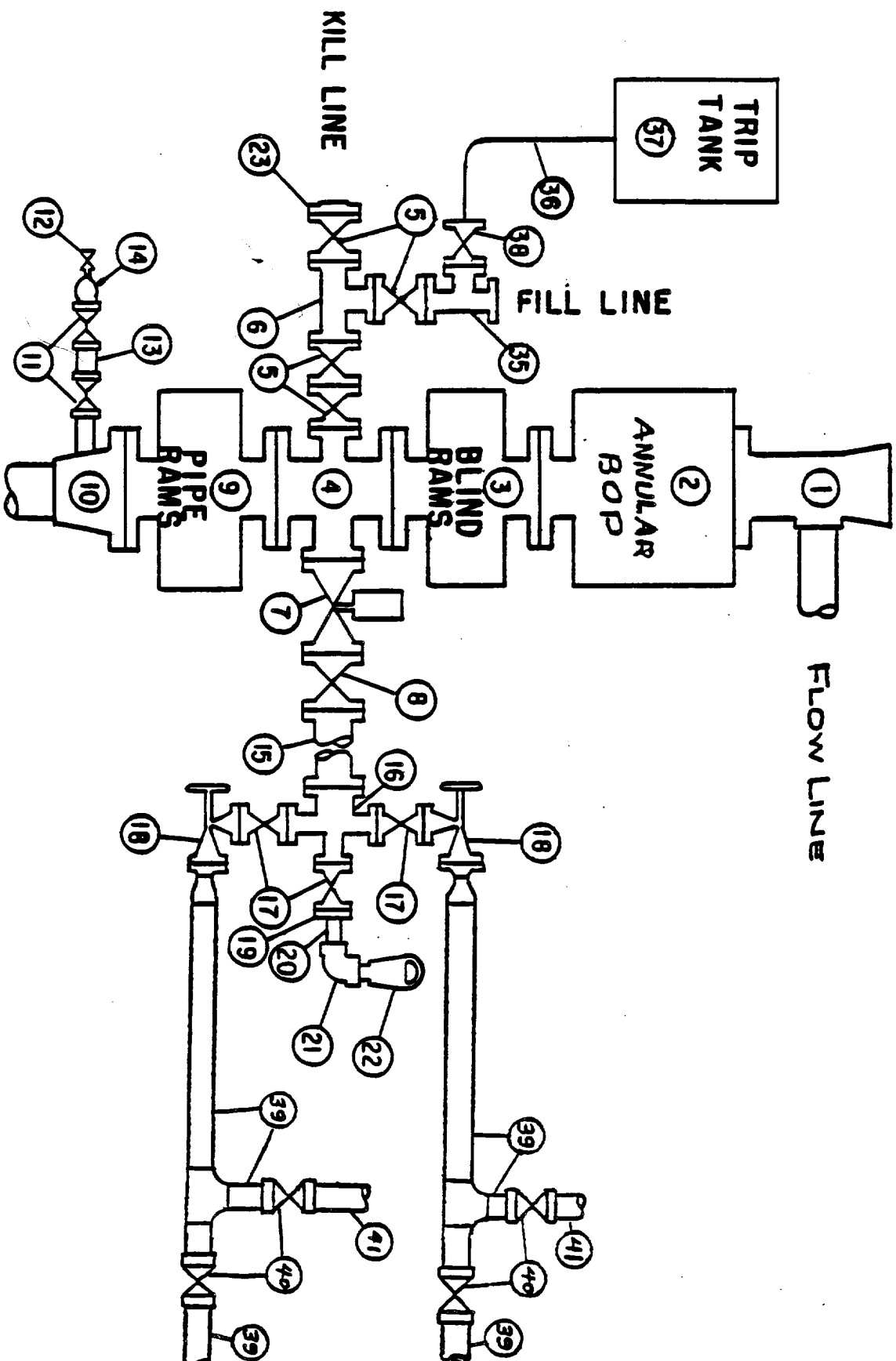
All equipment should be at least 2000 psi WP or higher unless otherwise specified.

1. Bell nipple.
2. Hydril or Shaffer bag type preventer.
3. Ram type pressure operated blowout preventer with blind rams.
4. Flanged spool with one 4-inch and one 2-inch (minimum) outlet.
5. 2-inch (minimum) flanged plug or gate valve.
6. 2-inch by 2-inch by 2-inch (minimum) flanged tee.
7. 4-inch pressure operated gate valve.
8. 4-inch flanged gate or plug valve.
9. Ram type pressure operated blowout preventer with pipe rams.
10. Flanged type casing head with one side outlet (furnished by Exxon).
11. 2-inch threaded (or flanged) plug or gate valve (furnished by Exxon).
Flanged on 5000# WP, threaded on 3000# WP or less.
12. Needle valve (furnished by Exxon).
13. 2-inch nipple (furnished by Exxon).
14. Tapped bull plug (furnished by Exxon).
15. 4-inch flanged spacer spool.
16. 4-inch by 2-inch by 2-inch by 2-inch flanged cross.
17. 2-inch flanged plug or gate valve.
18. 2-inch flanged adjustable choke.
19. 2-inch threaded flange.
20. 2-inch XXH nipple.
21. 2-inch forged steel 90° Ell.
22. Cameron (or equal.) threaded pressure gage.
23. Threaded flange.
35. 2-inch flanged tee.
36. 3-inch (minimum) hose. (Furnished by Exxon).
37. Trip tank. (Furnished by Exxon).
38. 2-inch flanged plug or gate valve.
39. 2-1/2-inch pipe, 300' to pit, anchored.
40. 2-1/2-inch SE valve.
41. 2-1/2-inch line to steel pit or separator.

NOTES:

1. Items 3, 4 and 9 may be replaced with double ram type preventer with side outlets between the rams.
2. The two valves next to the stack on the fill and kill line to be closed unless drill string is being pulled.
3. Kill line is for emergency use only. This connection shall not be used for filling.
4. Replacement pipe rams and blind rams shall be on location at all times.
5. Only type U, LWS and QRC ram type preventers with secondary seals are acceptable for 5000 psi WP and higher BOP stacks.
6. Type E ram-type BOP's with factory modified side outlets may be used on 3000 psi or lower WP BOP stacks.

MIDLAND DRILLING ORGANIZATION BLOWOUT PREVENTER SPECIFICATION TYPE II - C



9/15/73