

UNITED STATES
DEPARTMENT OF THE INTERIOR

GEOLOGICAL SURVEY

APPLICATION FOR PERMIT TO DRILL, DEEPEN, OR PLUG BACK

1a. TYPE OF WORK

DRILL ☒JUN 01 1984 ☐PLUG BACK ☐

b. TYPE OF WELL

OIL
WELL ☒GAS
WELL ☐

OTHER

O. C. D.

SINGLE
ZONE ☒MULTIPLE
ZONE ☐

2. NAME OF OPERATOR

Jubilee Energy Corporation

ARTESIA, OFFICE

3. ADDRESS OF OPERATOR

3100 North "A" St., Bldg. E, Suite 103, Midland, TX 79705

4. LOCATION OF WELL (Report location clearly and in accordance with any State requirements.)*

At surface

1650' FWL & 330" FNL, Sec. 17, T-25-S, R-30-E

At proposed prod. zone

Same

14. DISTANCE IN MILES AND DIRECTION FROM NEAREST TOWN OR POST OFFICE*

11 miles Southeast of Malaga, N.M.

15. DISTANCE FROM PROPOSED*

LOCATION TO NEAREST
PROPERTY OR LEASE LINE, FT.
(Also to nearest drig. unit line, if any)

330'

18. DISTANCE FROM PROPOSED LOCATION*
TO NEAREST WELL, DRILLING, COMPLETED,
OR APPLIED FOR, ON THIS LEASE, FT.

990'

16. NO. OF ACRES IN LEASE

80

19. PROPOSED DEPTH

3,800'

17. NO. OF ACRES ASSIGNED
TO THIS WELL

40

20. ROTARY OR CABLE TOOLS

Rotary

21. ELEVATIONS (Show whether DF, RT, GR, etc.)

3,210' GR

22. APPROX. DATE WORK WILL START*

May 30, 1984

23. PROPOSED CASING AND CEMENTING PROGRAM

SIZE OF HOLE	SIZE OF CASING	WEIGHT PER FOOT	SETTING DEPTH	QUANTITY OF CEMENT
12 3/4"	8 5/8"	28# S-80 & K-55	680 - 700'	Circulate
7 7/8"	5 1/2"	10.50# J-55	3,750'	200 SX

Cement Program: 8 5/8" csg. - 400 sx Halliburton Class "C" w/1# flocele and 2% CaCl₂
5 1/2" csg. - 200 sx Halliburton Class "C" 50/50 Poz w/6# salt, .3%
Halad 9 & 2% gel.

Mud Program: Fresh water mud from surface to 700'. Drill from 700' to 3,500'
with brine water, mud up with salt water gel and core and drill
to total depth.

Pressure Control Equipment: A 3,000# test blowout preventer will be used. See
Exhibit "C".

Gas not dedicated.

IN ABOVE SPACE DESCRIBE PROPOSED PROGRAM: If proposal is to deepen or plug back, give data on present productive zone and proposed new productive zone. If proposal is to drill or deepen directionally, give pertinent data on subsurface locations and measured and true vertical depths. Give blowout preventer program, if any.

24.

SIGNED

TITLE

President

DATE 5-22-84

(This space for Federal or State office use)

PERMIT NO.

APPROVAL DATE

APPROVED BY

TITLE

CONDITIONS OF APPROVAL, IF ANY:

DATE

Post and
JD-1-17/BR
6-8-84

APPROVAL SUBJECT TO
GENERAL REQUIREMENTS AND
SPECIAL STIPULATIONS
ATTACHED

NEW MEXICO OIL CONSERVATION COMMISSION
WELL LOCATION AND ACREAGE DEDICATION PLAT

Form C-102
Supersedes C-128
Effective 1-1-65

All distances must be from the outer boundaries of the Section

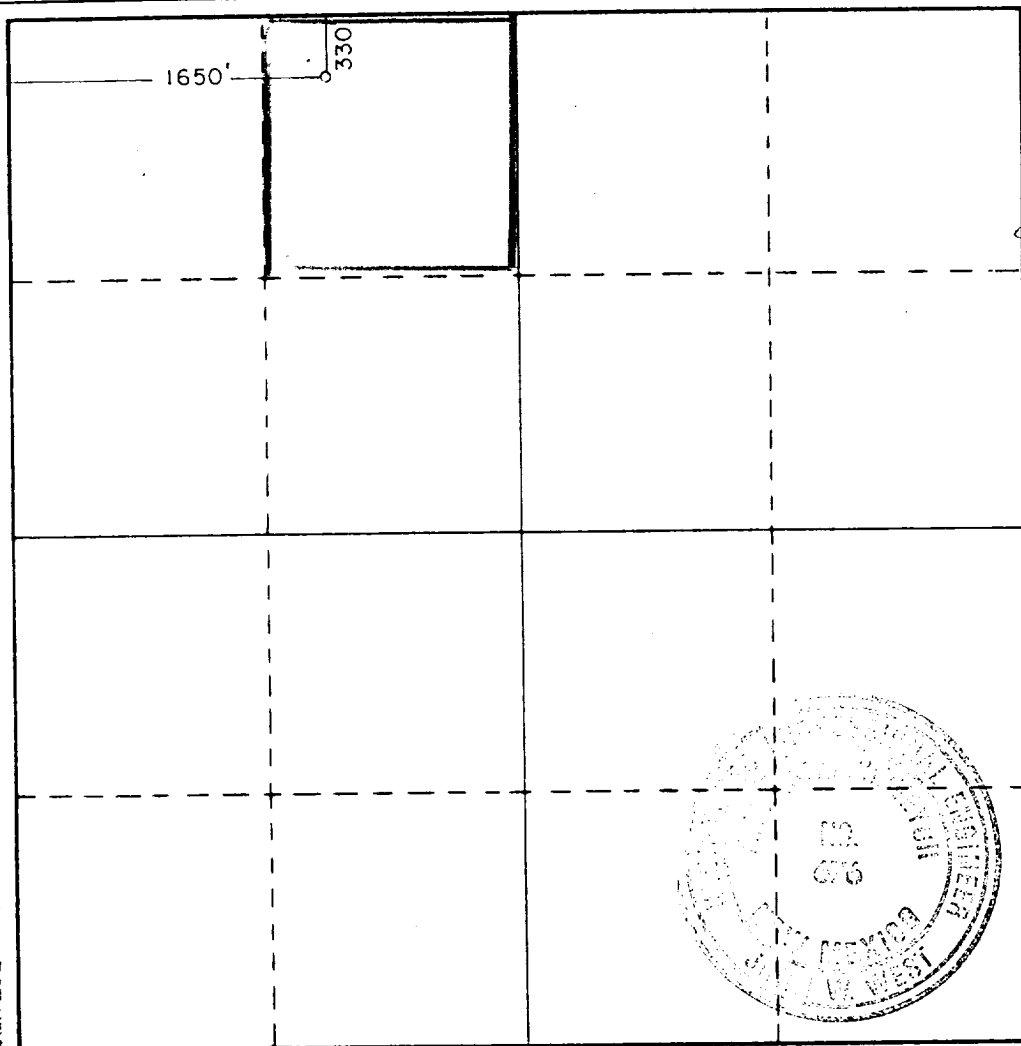
Operator JUBILEE ENERGY CORP.			Lease POKER LAKE UNIT		Well No. 64
Unit Letter C	Section 17	Township 25S	Range 30E	County EDDY	
Actual Footage Location of Well: 1650 feet from the WEST line and 330 feet from the NORTH line					
Ground Level Elev. 3210.5	Producing Formation Delaware Sand	Pool Corral Canyon - Delaware		Dedicated Acreage: 40 Acres	

1. Outline the acreage dedicated to the subject well by colored pencil or hachure marks on the plat below.
2. If more than one lease is dedicated to the well, outline each and identify the ownership thereof (both as to working interest and royalty). One lease only.
3. If more than one lease of different ownership is dedicated to the well, have the interests of all owners been consolidated by communitization, unitization, force-pooling, etc?

☐ Yes ☐ No If answer is "yes," type of consolidation _____

If answer is "no," list the owners and tract descriptions which have actually been consolidated. (Use reverse side of this form if necessary.) _____

No allowable will be assigned to the well until all interests have been consolidated (by communitization, unitization, forced-pooling, or otherwise) or until a non-standard unit, eliminating such interests, has been approved by the Commission.



CERTIFICATION

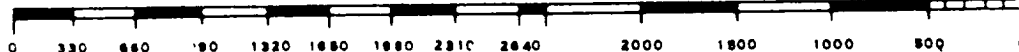
I hereby certify that the information contained herein is true and complete to the best of my knowledge and belief.

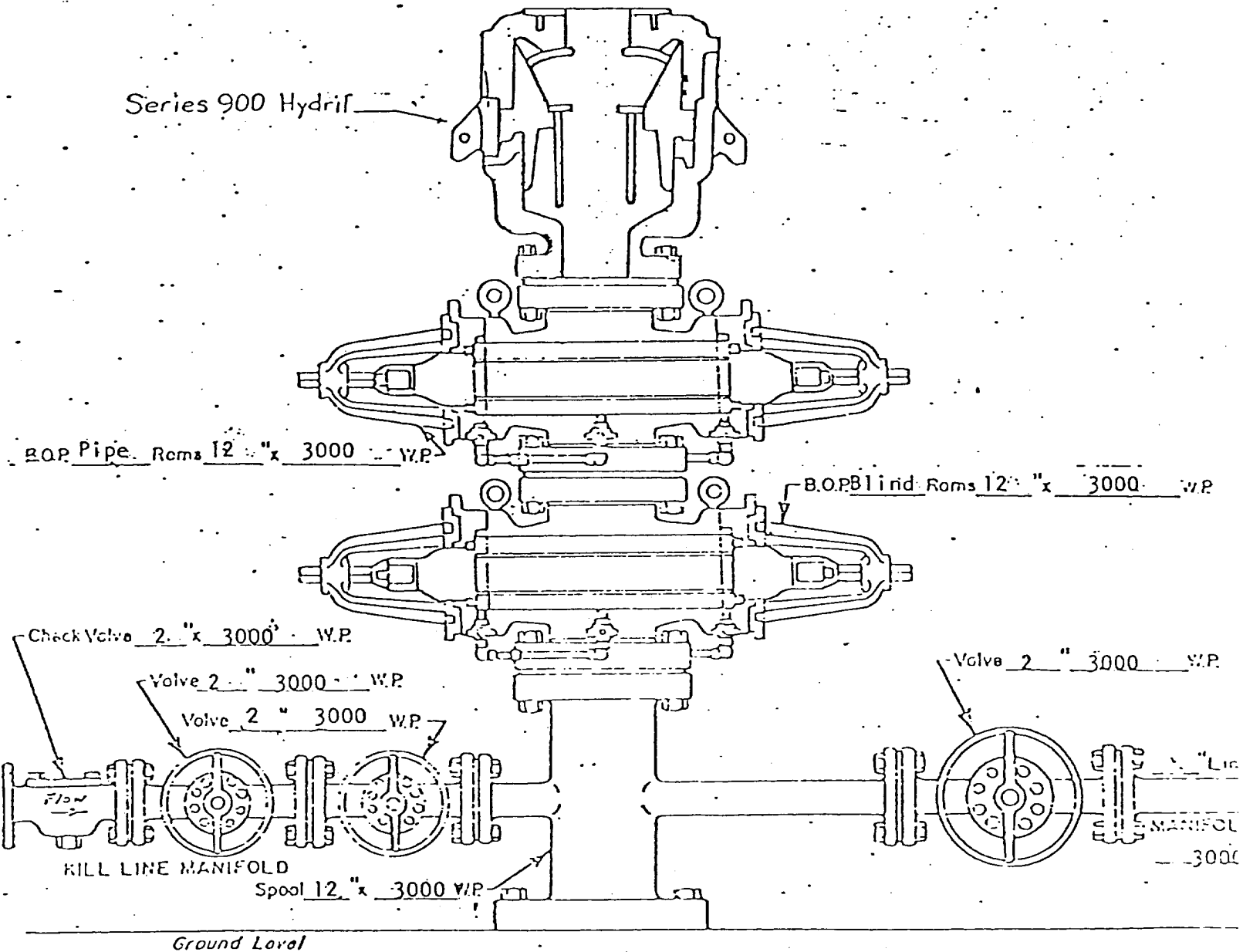
Name
T. B. Garber
Position
President
Company
Jubilee Energy Corporation
Date
May 18, 1984

I hereby certify that the well location shown on this plat was plotted from field notes of actual surveys made by me or under my supervision, and that the same is true and correct to the best of my knowledge and belief.

Date Surveyed
5/10/84
Registered Professional Engineer
and/or Land Surveyor

John W. West
Certificate No. JOHN W. WEST, 676
RONALD J. EIDSON, 3239





SURFACE
 WELL HEAD B.O.P.
 3000 W.P.

☐ Manual
☒ Hydraulic

APPLICATION FOR DRILLING

JUBILEE ENERGY CORPORATION - POKER LAKE UNIT WELL #64
1650' FWL & 330' FNL, Section 17, T-25-S, R-30-E
Eddy County, New Mexico

In conjunction with Form 9-331C, Application for Permit to Drill subject well, Jubilee Energy Corporation submits the following nine items of pertinent information in accordance with USGS requirements:

1. The geologic surface formation is Quaternary.
2. The estimated tops of geologic markers are as follows:

Triassic	175
Rustler	695
Castile	915
Lamar	3600
Delaware	3630

3. The estimated depths at which anticipated water, oil or gas formations are expected to be encountered:

Water	150 to 175 feet
Oil or Gas:	3,650 to 3,700 feet

4. Proposed Casing Program: See Form 9-331C
5. Pressure Control Equipment: See Form 9-331C and Exhibit "C"
6. Mud Program: See Form 9-331C.
7. Testing, Logging and Coring Programs:

Coring: Delaware Sand 3,650' to 3,700'

Drill Stem Tests: None

Mud Logging: None

Electric Logging: Sonic from T.D. to 200 feet above T.D.
Gamma Ray from T. D. to Surface

8. No abnormal pressures or temperatures are anticipated.
9. Anticipated starting date: May 30, 1984.

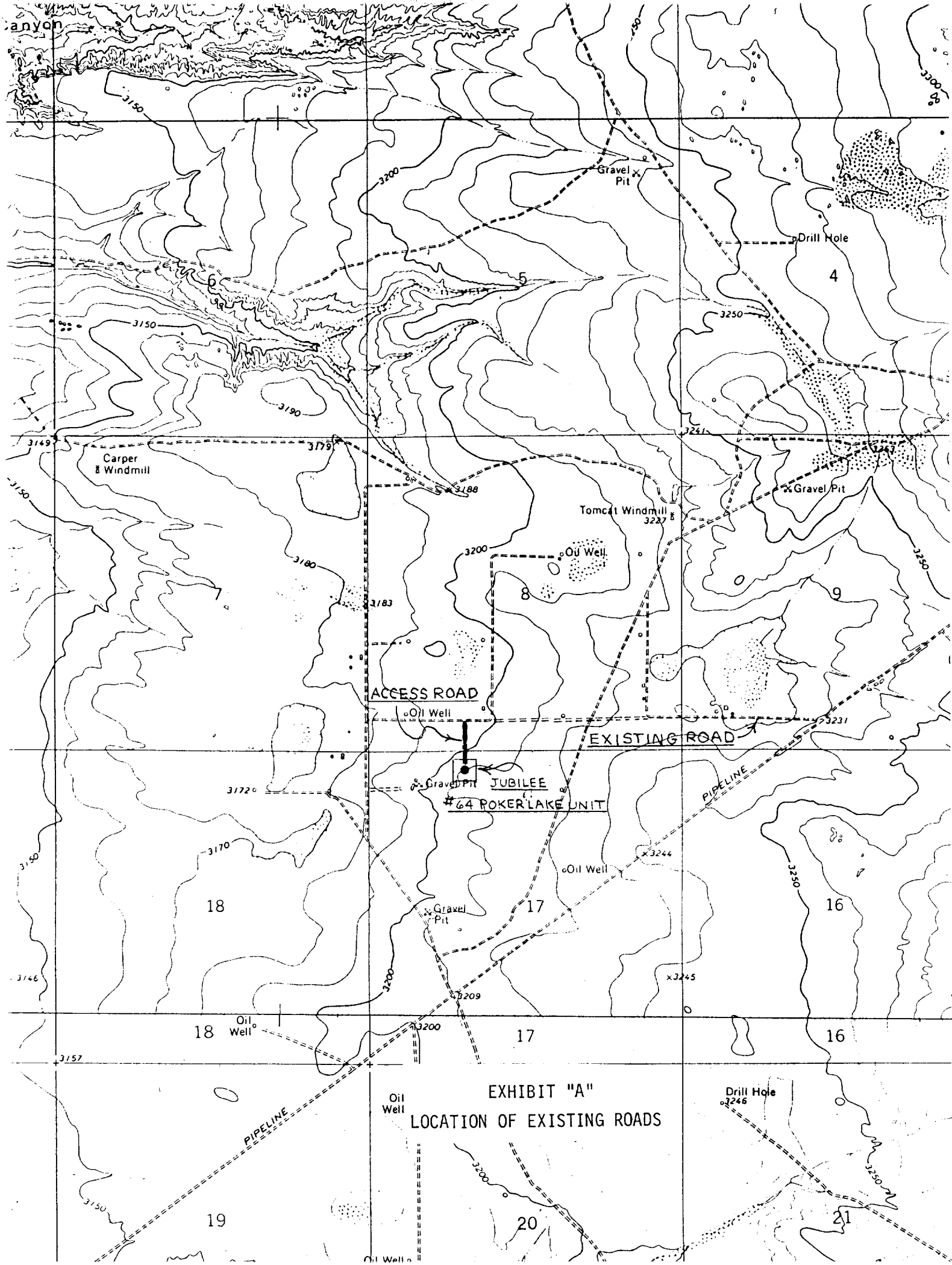


EXHIBIT "A"
LOCATION OF EXISTING ROADS

