

RECEIVED BY
DRAWER DD
ARIZONA, NM 88210
SUBMIT IN THE DATE*
(Other instructions on reverse side)

UNITED STATES
DEPARTMENT OF THE INTERIOR
GEOLOGICAL SURVEY
ARIZONA OFFICE

Form approved.
Budget Bureau No. 42-R1425.

30-015-24950

APPLICATION FOR PERMIT TO DRILL, DEEPEN, OR PLUG BACK

1a. TYPE OF WORK
DRILL ☒ DEEPEN ☐ PLUG BACK ☐

b. TYPE OF WELL
OIL WELL ☒ GAS WELL ☐ OTHER ☐ SINGLE ZONE ☐ MULTIPLE ZONE ☐

2. NAME OF OPERATOR
McClellan Oil Corporation ✓

3. ADDRESS OF OPERATOR
P.O. Drawer 730, Roswell, New Mexico 88202

4. LOCATION OF WELL (Report location clearly and in accordance with any State requirements.)*
At surface 1650' FSL & 1650' FEL
At proposed prod. zone

14. DISTANCE IN MILES AND DIRECTION FROM NEAREST TOWN OR POST OFFICE*
7 miles N.W. of Loco Hills

5. LEASE DESIGNATION AND SERIAL NO.
NM-0916

6. IF INDIAN, ALLOTTEE OR TRIBE NAME

7. UNIT AGREEMENT NAME

8. FARM OR LEASE NAME
Simmons Federal

9. WELL NO.
4

10. FIELD AND POOL, OR WILDCAT
W. Henshaw Grayburg-West

11. SEC., T., R., M., OR BLK. AND SURVEY OR AREA
Sec. 24-T16S-R29E

12. COUNTY OR PARISH
Eddy

13. STATE
N.M.

15. DISTANCE FROM PROPOSED* LOCATION TO NEAREST PROPERTY OR LEASE LINE, FT. (Also to nearest drlg. unit line, if any)
990'

16. NO. OF ACRES IN LEASE
1480

17. NO. OF ACRES ASSIGNED TO THIS WELL
40

18. DISTANCE FROM PROPOSED LOCATION* TO NEAREST WELL, DRILLING, COMPLETED, OR APPLIED FOR, ON THIS LEASE, FT.
3960' Apprx.

19. PROPOSED DEPTH
2700'

20. ROTARY OR CABLE TOOLS
Cable Tools

21. ELEVATIONS (Show whether DF, RT, GR, etc.)
3727'

22. APPROX. DATE WORK WILL START*
July 10, 1984

23. PROPOSED CASING AND CEMENTING PROGRAM

SIZE OF HOLE	SIZE OF CASING	WEIGHT PER FOOT	SETTING DEPTH	QUANTITY OF CEMENT
12-3/4"	8-5/8"	20 lb.	420'	175 sx (Circulate)
8 "	7 "	24 lb.	1950'	Set
6-3/4"	4-1/2"	9 1/2 lb.	2700'	200 sx

Will drill to approximately 2700' to test the Premier sand of the Graybury formation.
If production is indicated will run casing and attempt completion.

Estimated Geological Tops: Yates - 1080'
Queen - 1910'

Grayburg - 2308'
Premier - 2650'

IN ABOVE SPACE DESCRIBE PROPOSED PROGRAM: If proposal is to deepen or plug back, give data on present productive zone and proposed new productive zone. If proposal is to drill or deepen directionally, give pertinent data on subsurface locations and measured and true vertical depths. Give blowout preventer program, if any.

24. SIGNED Marb McClellan TITLE Operator DATE June 1, 1984
(This space for Federal or State office use)

PERMIT NO. _____ APPROVAL DATE _____
APPROVED BY Don Peterson AREA MANAGER
CONDITIONS OF APPROVAL, IF ANY: CF TITLE CARLSBAD RESOURCE AREA DATE 8-6-84

APPROVAL SUBJECT TO
GENERAL REQUIREMENTS AND
SPECIAL STIPULATIONS
ATTACHED

All Distances must be from the outer boundaries of the Section.

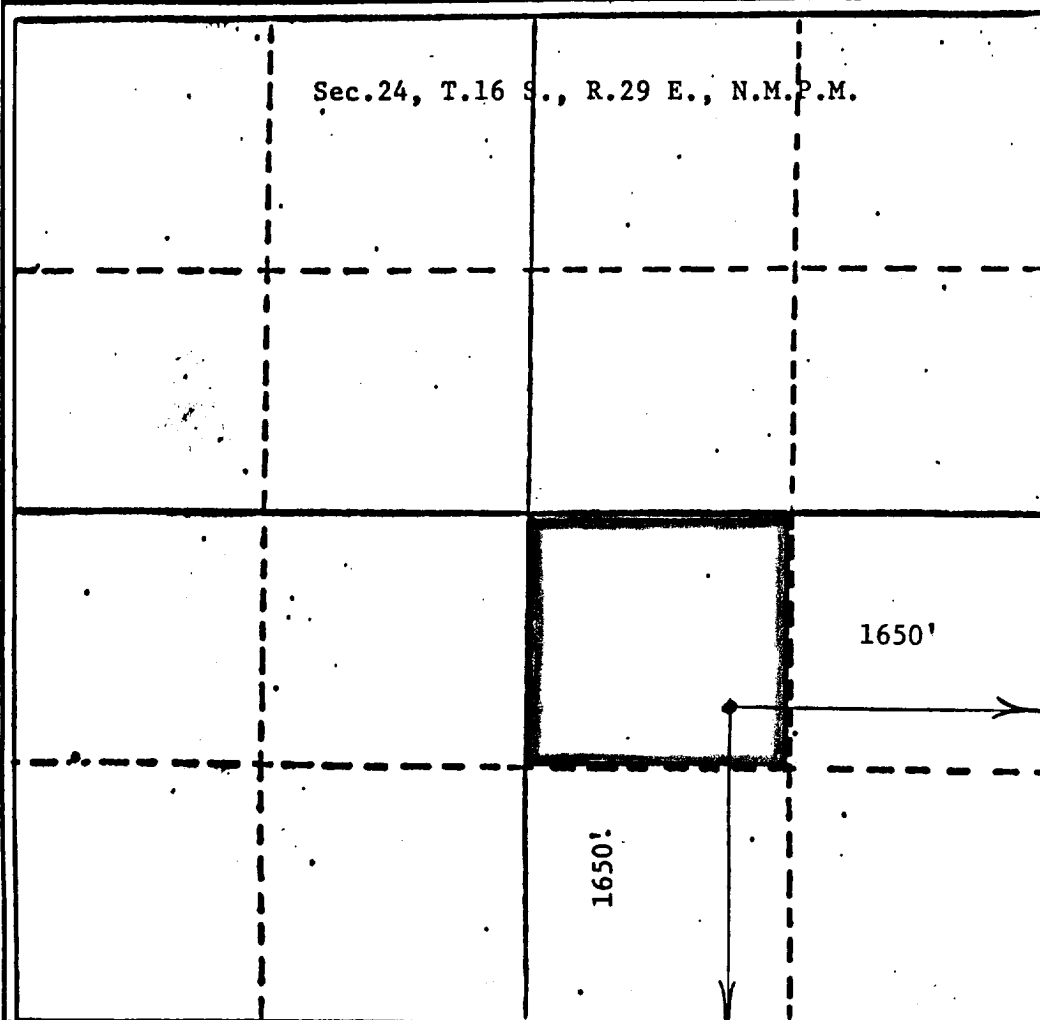
Operator McClellan Oil Corp.		Lease Simmons Federal		Well No. #4
Unit Letter J	Section 24	Township 16 South	Range 29 East	County Eddy
Actual Footage Location of Well 1650 feet from the South line and 1650 feet from the East line				
Ground Level Elev. 3727	Producing Formation Premier	Pool Henshaw Grayburg West	Dedicated Acreage 40 Acres	

1. Outline the acreage dedicated to the subject well by colored pencil or hatchure marks on the plat below.
2. If more than one lease is dedicated to the well, outline each and identify the ownership thereof (both as to working interest and royalty).
3. If more than one lease of different ownership is dedicated to the well, have the interests of all owners been consolidated by communitization, unitization, force-pooling, etc?

☐ Yes ☐ No If answer is "yes," type of consolidation _____

If answer is "no," list the owners and tract descriptions which have actually been consolidated. (Use reverse side of this form if necessary.) _____

No allowable will be assigned to the well until all interests have been consolidated (by communitization, unitization, forced-pooling, or otherwise) or until a non-standard unit, eliminating such interests, has been approved by the Division



CERTIFICATION

I hereby certify that the information contained herein is true and complete to the best of my knowledge and belief.

Mark McClellan

Name

Mark McClellan

Position

Geologist

Company

McClellan Oil Corporation

Date

June 13, 1984

I hereby certify that the well location shown on this plat was plotted from field notes of actual surveys made by me or under my supervision, and that the same is true and correct to the best of my knowledge and belief.

Date Surveyed

June 13, 1984

Registered Professional Engineer and/or Land Surveyor

6750

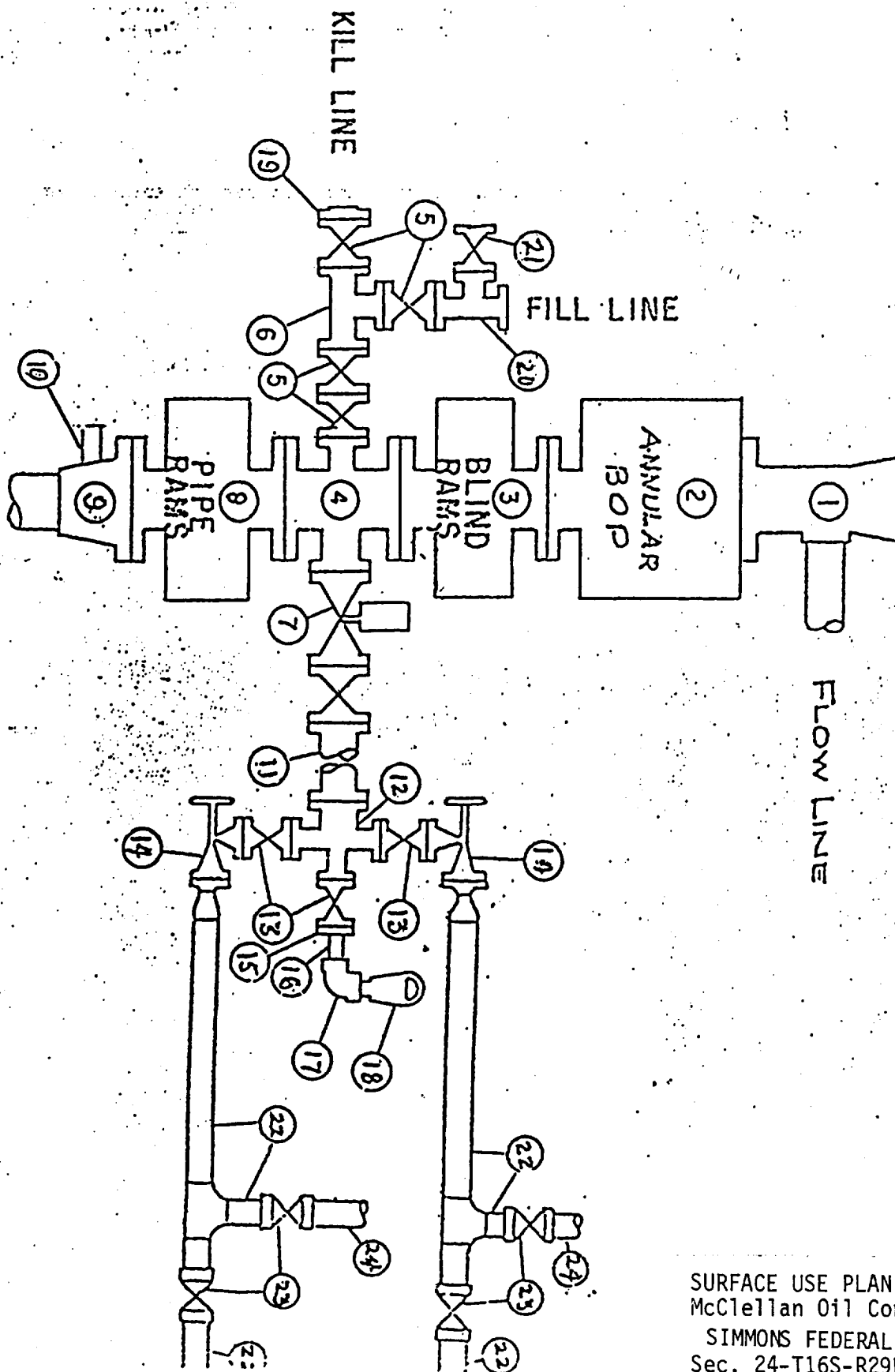
John A. Jacques, P.E. & L.S.

Certification No.

6750

PROFESSIONAL ENGINEER

BLOWOUT PREVENTER SPECIFICATION



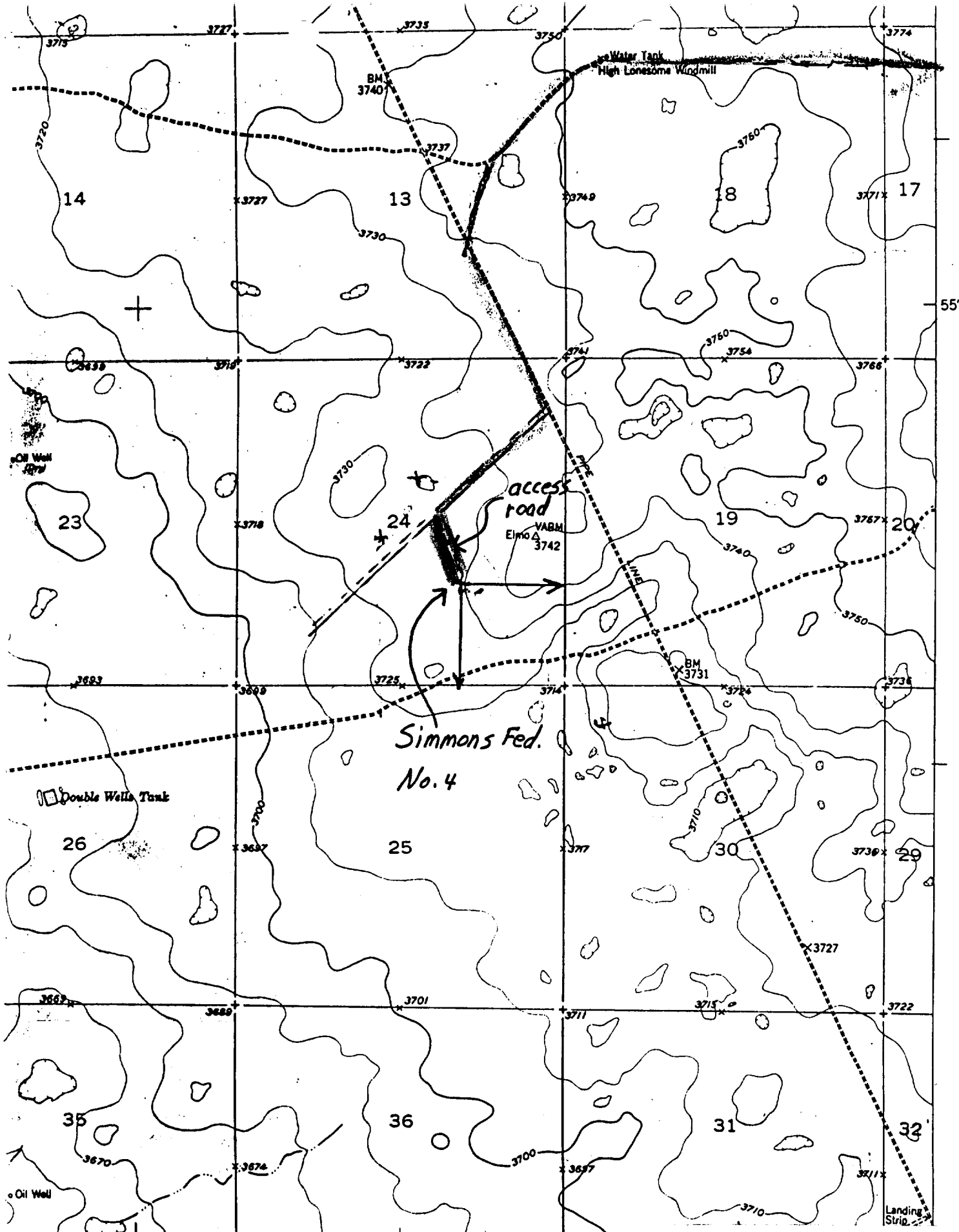
SURFACE USE PLAN EXHIBIT "E"
 McClellan Oil Corporation
 SIMMONS FEDERAL NO. 4
 Sec. 24-T16S-R29E
 Eddy County, NM

REQUIREMENTS
(NTL-6)

1. Location: Sec. 24-T16S-R29E, 1650' FSL & 1650 FEL
2. Elevation: 3727'
3. Geologic name of surface formation: See archaeological report
4. Type of drilling rig and associated equipment: Cable Tool
5. Proposed drilling depth and objective formation: 2700', Premier
6. Estimated tops of geologic markers:

Yates	<u>1080'</u>	Premier	<u>2650'</u>	Abo	<u> </u>
Queen	<u>1910'</u>	Glorieta	<u> </u>	Wolfcamp	<u> </u>
Grayburg	<u>2308'</u>	Tubb	<u> </u>		<u> </u>
7. Estimated depths of any oil, water, or gas: Possible oil at 2650'
- 8-9. Proposed casing program:

<u>8-5/8"</u>	@	<u>420'</u>	Grade	<u>J-55</u>	Wt.	<u>20 lb.</u>	Type Cement	<u>Class "C"</u>
<u>7"</u>	@	<u>1950'</u>	Grade	<u>J-55</u>	Wt.	<u>24 lb.</u>	Type Cement	<u>Set</u>
<u>4-1/2"</u>	@	<u>2700'</u>	Grade	<u>J-55</u>	Wt.	<u>9.5 lb.</u>	Type Cement	<u>Class "C"</u>
10. Specifications for pressure control equipment and testing procedures: None
11. Type and characteristics of drilling fluids: None (Cable Tool)
12. Testing, logging, and coring programs: Will bail test any shows
13. Anticipated abnormal pressures or temperature: None
14. Anticipated commencement and completion date: July 10, 1984 - August 20, 1984
15. Other pertinent information: None



1 MILE
5000'

R. 29 E. R. 30 E. INTERIOR

Heavy-duty

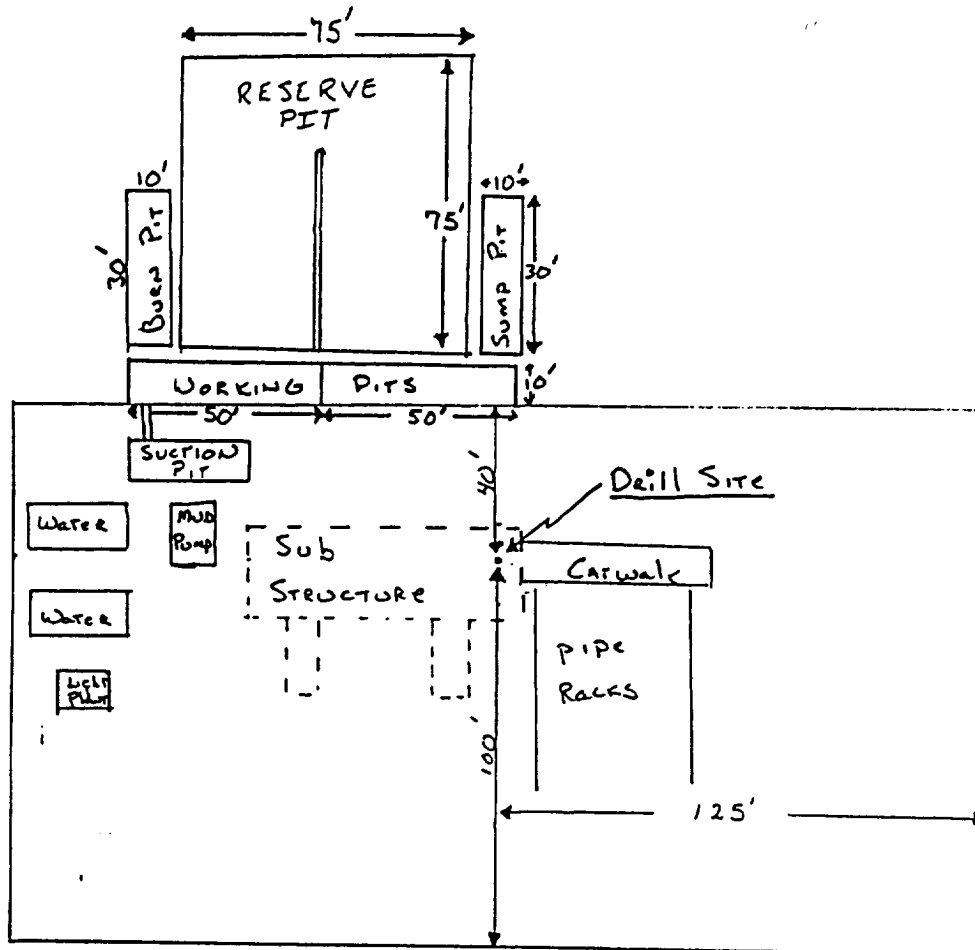
SURFACE USE PLAN EXHIBIT "B"
McClellan Oil Corporation
SIMMONS FEDERAL NO. 4
Sec. 24-T16S-T29E
Eddy County, NM

McCLELLAN OIL CORPORATION
SUGGESTED PAD DIMENSIONS

Reserve Pits 4 ft. deep, plastic lined

Working pits 5 ft. deep

No cellar



Scale 1" = 50'