

RECEIVED BY
AUG 30 1984
SUBMIT IN 1 APPLICATION
(Other instructions on reverse side)
UNITED STATES
DEPARTMENT OF THE INTERIOR
BUREAU OF LAND MANAGEMENT
ARTESIA, OFFICE

c/sf
Form approved 30-015-24988
Budget Bureau No. 1004-0136
Expires August 31, 1985

APPLICATION FOR PERMIT TO DRILL, DEEPEN, OR PLUG BACK

1a. TYPE OF WORK

DRILL ☒

DEEPEN ☐

PLUG BACK ☐

b. TYPE OF WELL

OIL WELL ☒

GAS WELL ☐

OTHER

SINGLE ZONE ☒

MULTIPLE ZONE ☐

2. NAME OF OPERATOR

J. Ray Stewart

3. ADDRESS OF OPERATOR

P.O. Box 451, Midland, Texas 79702

4. LOCATION OF WELL (Report location clearly and in accordance with any State requirements.)

At surface

1980' FSL & 330' FWL NW/4 SW/4 Unit L

At proposed prod. zone

Same

14. DISTANCE IN MILES AND DIRECTION FROM NEAREST TOWN OR POST OFFICE*

9 1/2 miles air miles southeast of Malaga, N.M.

15. DISTANCE FROM PROPOSED*

LOCATION TO NEAREST
PROPERTY OR LEASE LINE, FT.
(Also to nearest drlg. unit line, if any)

330'

16. NO. OF ACRES IN LEASE

960

17. NO. OF ACRES ASSIGNED
TO THIS WELL

40

18. DISTANCE FROM PROPOSED LOCATION*

TO NEAREST WELL, DRILLING, COMPLETED,
OR APPLIED FOR, ON THIS LEASE, FT.

1320'

19. PROPOSED DEPTH

3800'±

20. ROTARY OR CABLE TOOLS

Rotary

21. ELEVATIONS (Show whether DF, RT, GR, etc.)

3198' GR

22. APPROX. DATE WORK WILL START*

September 1, 1984

23.

PROPOSED CASING AND CEMENTING PROGRAM

SIZE OF HOLE	SIZE OF CASING	WEIGHT PER FOOT	SETTING DEPTH	QUANTITY OF CEMENT
12 1/4"	8 5/8"	24.0#	750'±	450 sx (Circulate)
7 7/8"	4 1/2"	10.5#	3800'±	200 sx

Proposed plans are to drill to the Delaware formation and test for possible commercial production of oil and gas.

BOP sketch is attached.

Designation of Agent from Perry R. Bass will be submitted under a separate cover.

IN ABOVE SPACE DESCRIBE PROPOSED PROGRAM: If proposal is to deepen or plug back, give data on present productive zone and proposed new productive zone. If proposal is to drill or deepen directionally, give pertinent data on subsurface locations and measured and true vertical depths. Give blowout preventer program, if any.

24.

SIGNED

Jerry W. Franklin

TITLE

Agent

DATE

8/24/84

(This space for Federal or State office use)

PERMIT NO.

APPROVAL DATE

APPROVED BY

TITLE

AREA MANAGER

CARLSBAD RESOURCE AREA

CONDITIONS OF APPROVAL, IF ANY:

APPROVAL SUBJECT TO
GENERAL REQUIREMENTS AND
SPECIAL STIPULATIONS
ATTACHED

*See Instructions On Reverse Side

All distances must be from the outer boundaries of the Section.

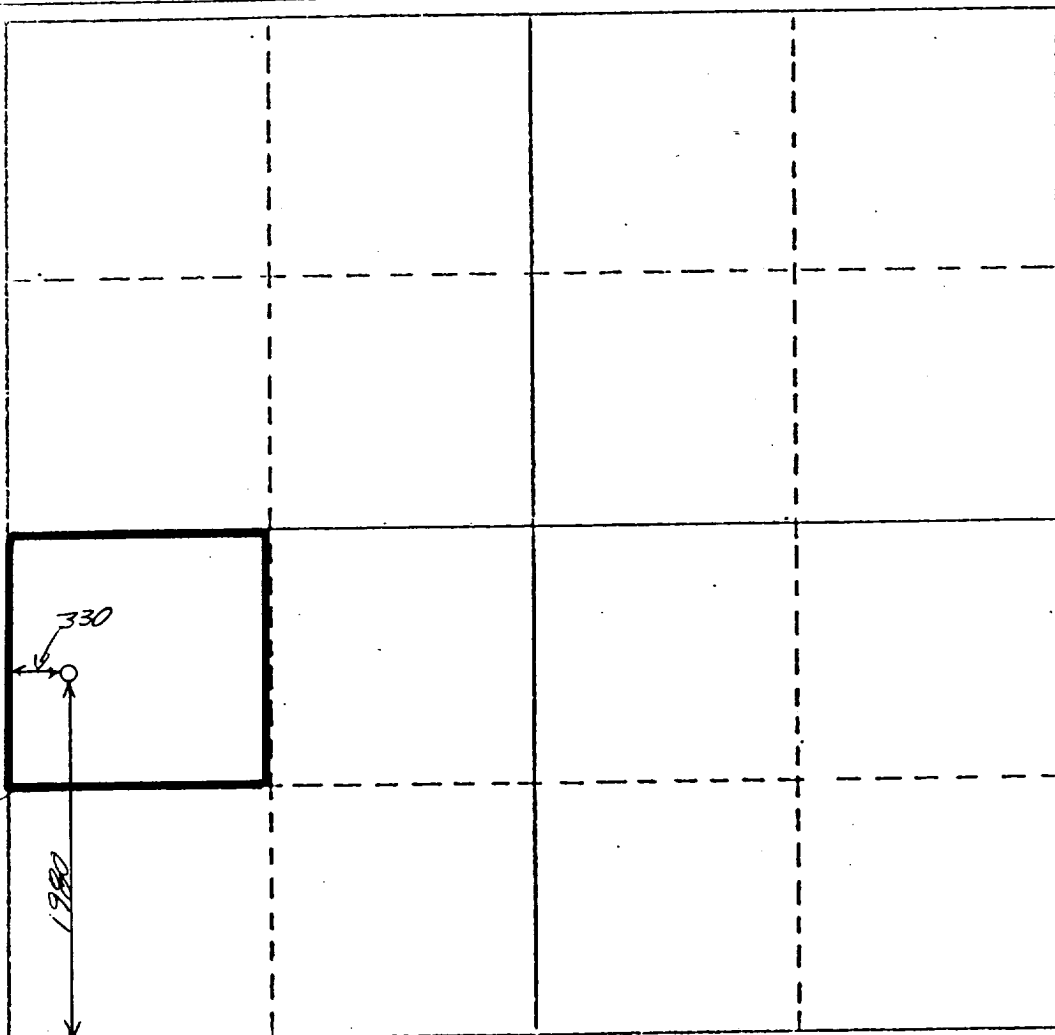
Operator J. Ray Stewart		Lease Poker Lake Unit		Well No. 66
Unit Letter L	Section 17	Township 25 South	Range 30 East	County Eddy
Actual Footage Location of Well: 1980 feet from the South line and 330 feet from the West line				
Ground Level Elev. 3198	Producing Formation Delaware		Pool Corral Canyon	Dedicated Acreage: 40 Acres

1. Outline the acreage dedicated to the subject well by colored pencil or hachure marks on the plat below.
2. If more than one lease is dedicated to the well, outline each and identify the ownership thereof (both as to working interest and royalty).
3. If more than one lease of different ownership is dedicated to the well, have the interests of all owners been consolidated by communitization, unitization, force-pooling, etc?

☐ Yes ☐ No If answer is "yes," type of consolidation _____

If answer is "no," list the owners and tract descriptions which have actually been consolidated. (Use reverse side of this form if necessary.) _____

No allowable will be assigned to the well until all interests have been consolidated (by communitization, unitization, forced-pooling, or otherwise) or until a non-standard unit, eliminating such interests, has been approved by the Division.



CERTIFICATION

I hereby certify that the information contained herein is true and complete to the best of my knowledge and belief.

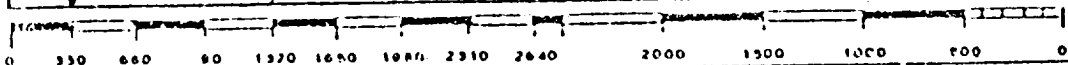
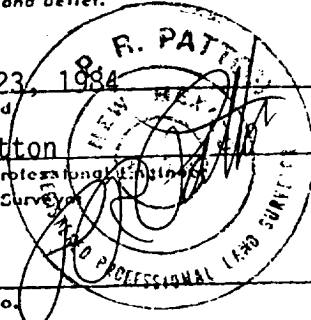
Name
Terry W. Franklin
Position
Agent
Company
J. Ray Stewart
Date
8/24/84

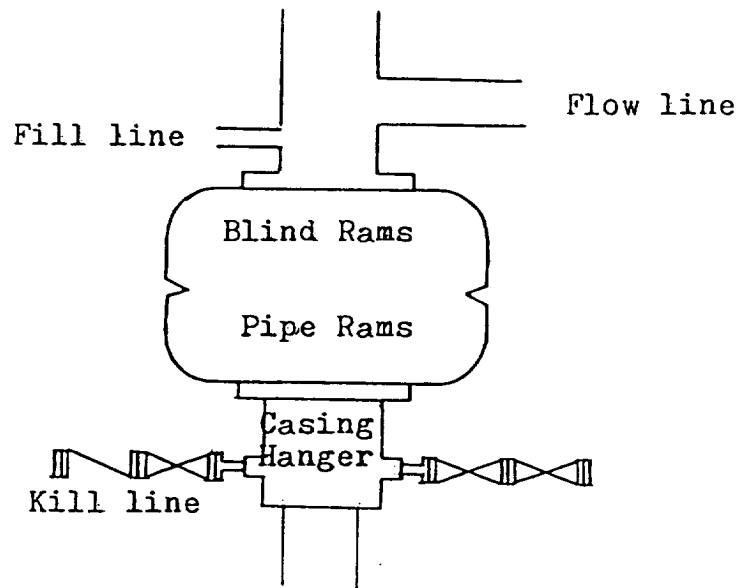
I hereby certify that the well location shown on this plat was plotted from field notes of actual surveys made by me or under my supervision, and that the same is true and correct to the best of my knowledge and belief.

August 23, 1984
Date Surveyed
P.R. Patton
Registered Professional Engineer
and/or Land Surveyor

8112

Certificate No.





Blowout Preventer
3000 psi working pressure

SUPPLEMENTAL DRILLING DATA

J. Ray Stewart
Poker Lake Unit No. 66
1980' FSL & 330' FWL
Sec. 17, T25S, R30E
Eddy County, N.M.
Lease No. LC-064894-A

1. Surface Formation: Aeolian
2. Estimated Geological Marker Tops:

Rustler	662'	Delaware 'SS'	3647'
Delaware 'LS'	3618'	Ramsey 'SS'	3677'
3. Mineral Bearing Formation: Delaware-oil.
4. Proposed Casing and Cement Program:

8 5/8" Casing - Set approximately 750', 24.0#, J-55, ST&C casing and cement with 450 sx cement to surface.

4 1/2" Casing - Set 10.5#, K-55, ST&C casing to 3800' and cement with 200 sx cement to isolate all oil, gas, and water zones.
5. Pressure Control Equipment: A 3000 psi working pressure BOP will be installed after 8 5/8" casing is set and cemented.
6. Proposed Mud Program:

0-750'	Fresh water gel with lime.
750-3500'	Brine water.
3500-3800'	Brine water with starch to control water loss to less than 20 cc.
7. Auxiliary Equipment: A kelly cock will be installed on the rig floor while drilling operations are in progress.
8. Testing, Logging, and Coring Program:

Testing:	None anticipated.
Logging:	GR-Borehole Compensated Sonic Log & CNL.
Coring :	None anticipated.

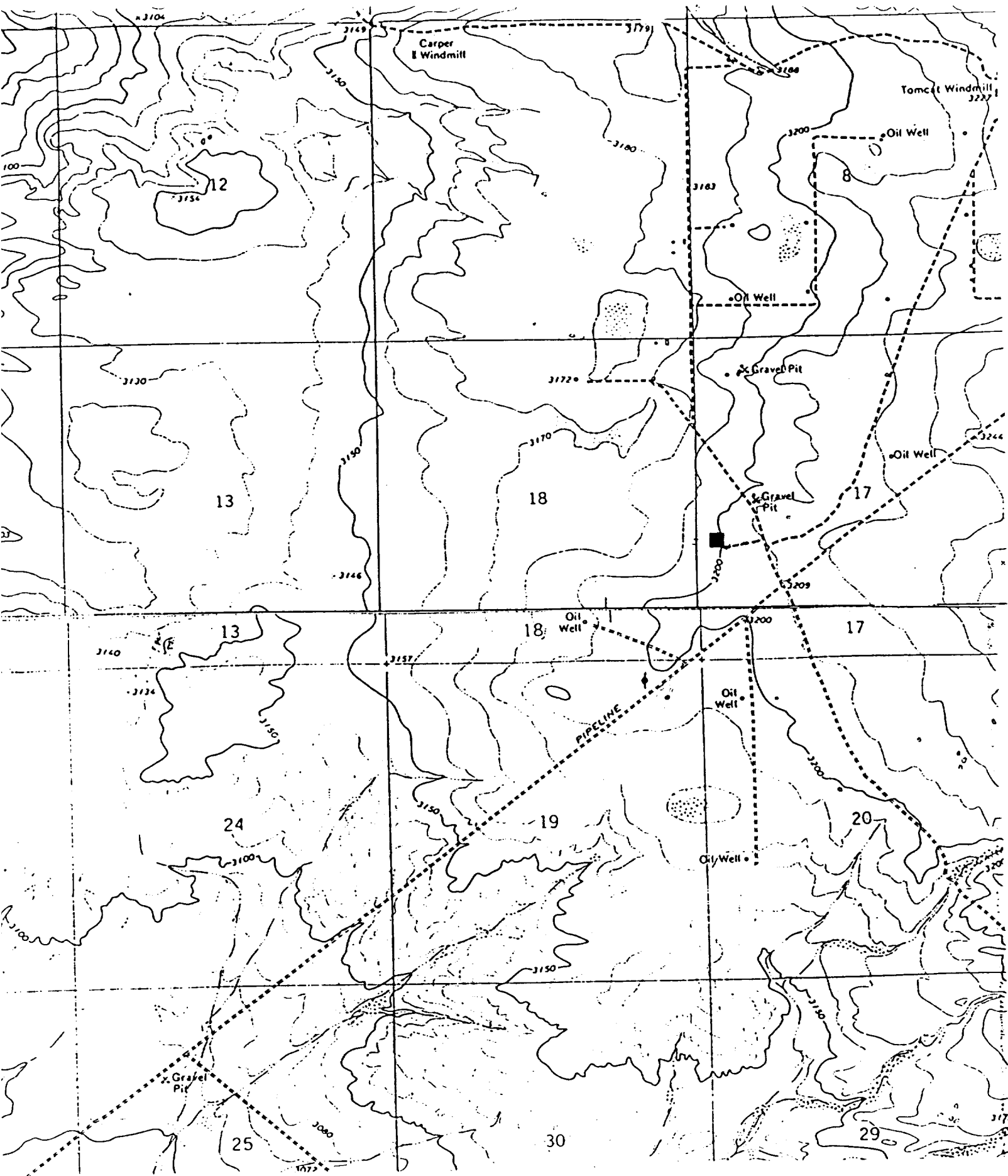
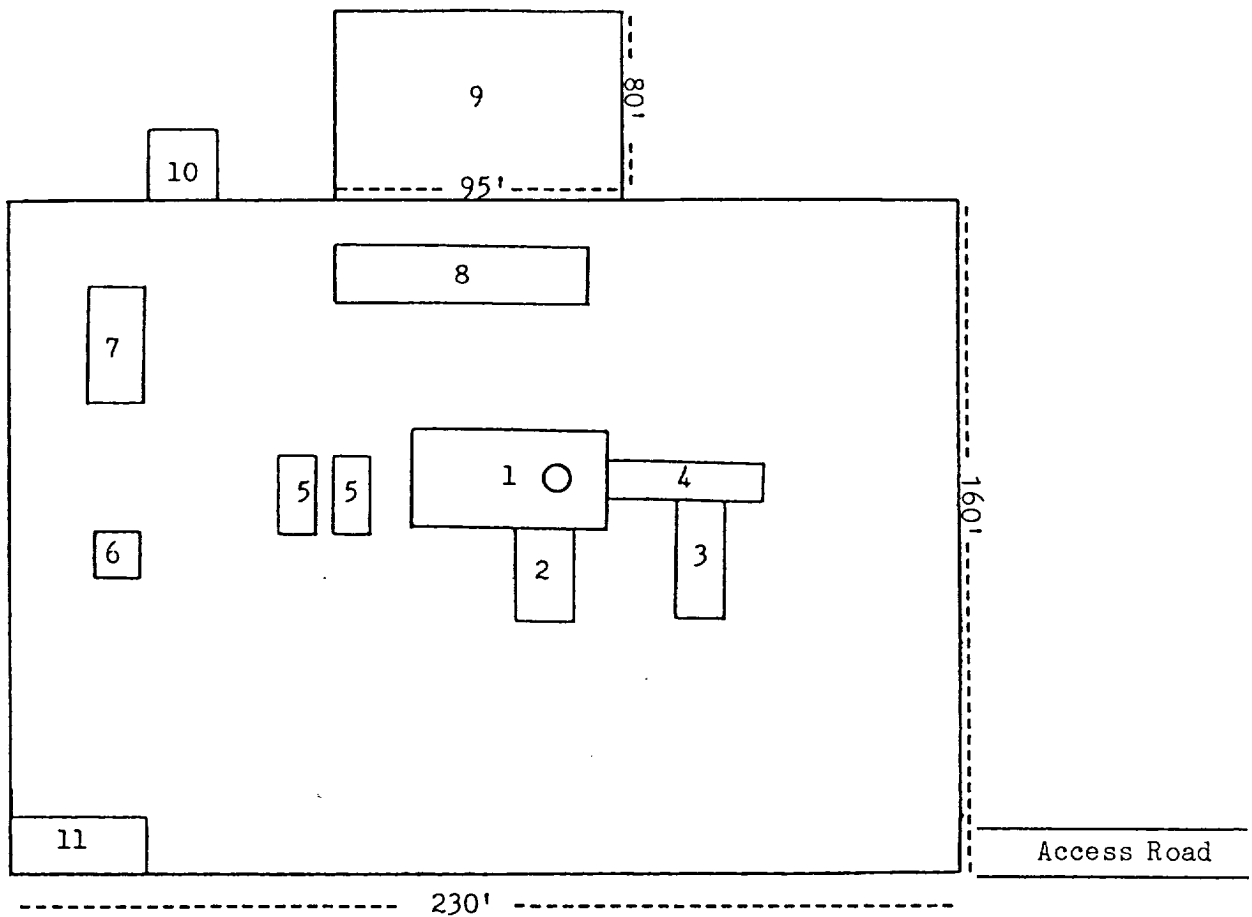


EXHIBIT 'B'

1
N



- | | |
|-----------------|-------------------|
| 1. Substructure | 7. Water Tank |
| 2. Doghouse | 8. Working Pits |
| 3. Piperacks | 9. Reserve Pit |
| 4. Catwalk | 10. Trash Pit |
| 5. Mud Pumps | 11. Trailer House |
| 6. Light Plant | |

EXHIBIT 'C'