

RECEIVED BY

Form 3160-3

(November 1983)

JUN 14 1985

NM OIL CONS. COMMISSION

DD

UNITED STATES

DEPARTMENT OF THE INTERIOR

BUREAU OF LAND MANAGEMENT

SUBMIT IN TR. CATE\*

(Other instructions on reverse side)

Form approved.

Budget Bureau No. 1004-0136

Expires August 31, 1985

O. C. D.

5. LEASE DESIGNATION AND SERIAL NO.

NM-44532

6. IF INDIAN, ALLOTTEE OR TRIBE NAME

7. UNIT AGREEMENT NAME

8. FARM OR LEASE NAME

Sosa Federal

9. WELL NO.

1

10. FIELD AND POOL, OR WILDCAT

Brushy Draw *Delaware*

11. SEC., T., R., M., OR BLK. AND SURVEY OR AREA

Sec. 15-T26S-R29E

12. COUNTY OR PARISH

Eddy

13. STATE

NM

1a. TYPE OF WORK

DRILL ☒DEEPEN ☐PLUG BACK ☐

b. TYPE OF WELL

OIL WELL ☒GAS WELL ☐

OTHER

SINGLE ZONE ☐MULTIPLE ZONE ☐

2. NAME OF OPERATOR

Exxon Corporation ☒

3. ADDRESS OF OPERATOR

P. O. Box 1600, Midland, Texas 79702

4. LOCATION OF WELL (Report location clearly and in accordance with any State requirements.)\*

At surface

332' FSL and 1693' FEL of Sec. (SW SE)

At proposed prod. zone

14. DISTANCE IN MILES AND DIRECTION FROM NEAREST TOWN OR POST OFFICE\*

20 miles SE of Malaga

15. DISTANCE FROM PROPOSED\*

LOCATION TO NEAREST

332'

PROPERTY OR LEASE LINE, FT.

(Also to nearest drig. unit line, if any)

332'

18. DISTANCE FROM PROPOSED LOCATION\*

TO NEAREST WELL, DRILLING, COMPLETED, OR APPLIED FOR, ON THIS LEASE, FT.

1363'

16. NO. OF ACRES IN LEASE

720

19. PROPOSED DEPTH

5200'

17. NO. OF ACRES ASSIGNED TO THIS WELL

40

20. ROTARY OR CABLE TOOLS

Rotary

21. ELEVATIONS (Show whether DF, RT, GR, etc.)

2925' GR

22. APPROX. DATE WORK WILL START\*

2nd quarter 1985

23. PROPOSED CASING AND CEMENTING PROGRAM

SIZE OF HOLE	SIZE OF CASING	WEIGHT PER FOOT	SETTING DEPTH	QUANTITY OF CEMENT
12 1/4"	8 5/8"	24#	600' 350'	200 sx <b>CIRCULATE</b>
7 7/8"	5 1/2"	14#	5200'	600 sx

IN ABOVE SPACE DESCRIBE PROPOSED PROGRAM: If proposal is to deepen or plug back, give data on present productive zone and proposed new productive zone. If proposal is to drill or deepen directionally, give pertinent data on subsurface locations and measured and true vertical depths. Give blowout preventer program, if any.

24.

SIGNED

*Edgar Runkel*

TITLE

Unit Head

DATE

5-22-85

(This space for Federal or State office use)

PERMIT NO.

APPROVAL DATE

APPROVED BY

*James H. H. H.*

TITLE

*Attorney*

DATE

6-19-85

CONDITIONS OF APPROVAL, IF ANY:

APPROVAL SUBJECT TO  
GENERAL REQUIREMENTS AND  
SPECIAL STIPULATIONS

ATTACHED

\*See Instructions On Reverse Side

Title 18 U.S.C. Section 1001, makes it a crime for any person knowingly and willfully to make to any department or agency of the United States any false, fictitious or fraudulent statements or representations or to any matter within its jurisdiction.

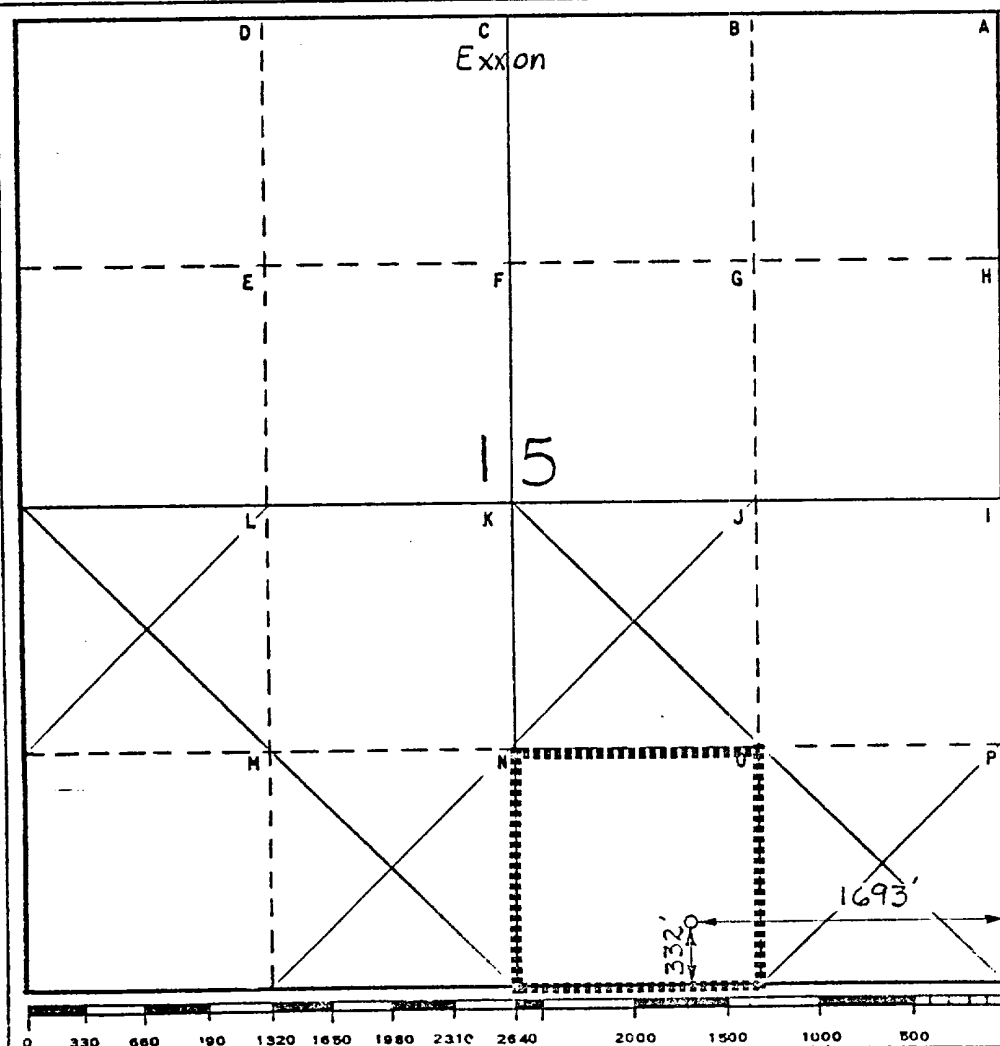
Operator Exxon Corporation			Lease Sosa Federal			Well No. 1		
Unit Letter 0	Section 15	Township 26 S	Range 29 E	County Eddy				
Actual Footage Location of Well: 332 feet from the South line and 1693 feet from the East line								
Ground Level Elev. 2925	Producing Formation Delaware		Pool Brushy Draw Undes.		Dedicated Acreage: 40 Acres			

1. Outline the acreage dedicated to the subject well by colored pencil or hatchure marks on the plat below.
2. If more than one lease is dedicated to the well, outline each and identify the ownership thereof (both as to working interest and royalty).
3. If more than one lease of different ownership is dedicated to the well, have the interests of all owners been consolidated by communitization, unitization, force-pooling, etc?

☐ Yes ☐ No If answer is "yes," type of consolidation \_\_\_\_\_

If answer is "no," list the owners and tract descriptions which have actually been consolidated. (Use reverse side of this form if necessary.) \_\_\_\_\_

No allowable will be assigned to the well until all interests have been consolidated (by communitization, unitization, forced-pooling, or otherwise) or until a non-standard unit, eliminating such interests, has been approved by the Commission.



#### CERTIFICATION

I hereby certify that the information contained herein is true and complete to the best of my knowledge and belief.

Name  
*Edgar Rumbel*

Position  
UNIT HEAD

Company Exxon Corporation  
Box 1600 Midland, Texas

Date  
5-13-85

I hereby certify that the well location shown on this plat was plotted from field notes of actual surveys made by me or under my supervision, and that the same is true and correct to the best of my knowledge and belief.

Date Surveyed  
4-25-85

Registered Professional Engineer  
and/or Land Surveyor

*Bruce R. Pennell*

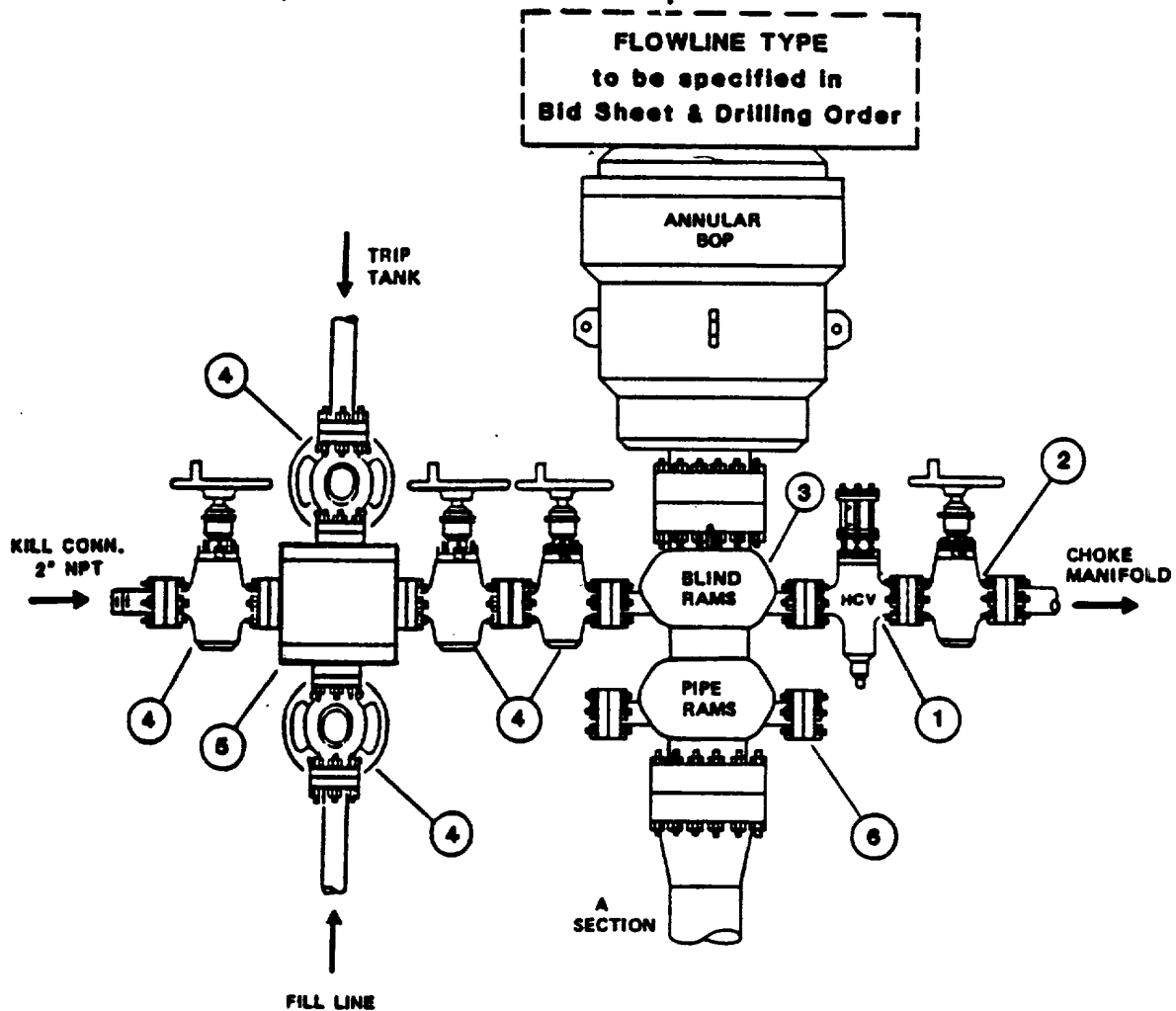
Certificate No.  
#9062

20 Miles SE of Malaga, New Mexico

C.E. Sec. File No. W-A-5407

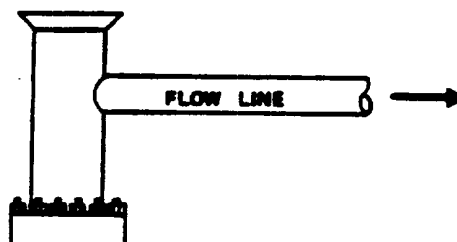
# TYPE RRA BOP STACK

## THREE PREVENTERS



## TYPE- BG

### BELL NIPPLE FOR GRAVITY TRIP TANK



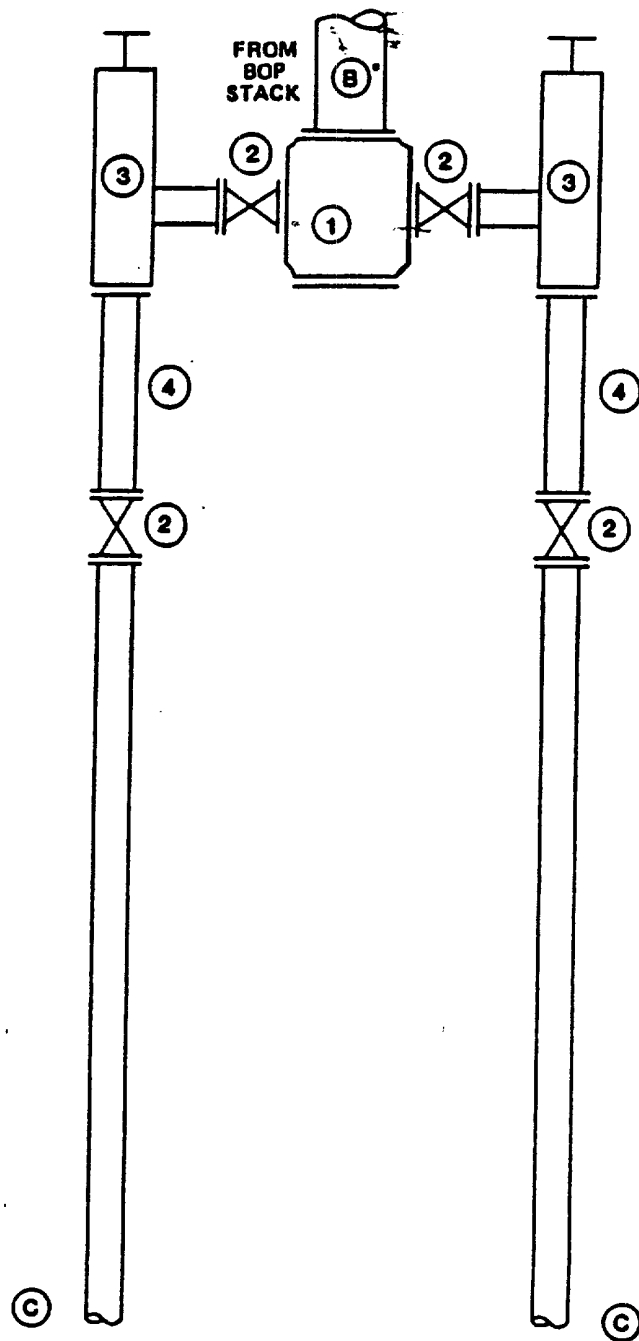
# **COMPONENT SPECIFICATIONS**

## **Type RRA BOP Stack**

1. Flanged hydraulically controlled gate valve -- 3" minimum nominal diameter -- same working pressure as BOP stack.
2. Flanged plug gate valve -- 3" minimum nominal diameter -- same working pressure as BOP stack.
3. BOP outlets must be 2" minimum nominal diameter for kill line and 3" minimum diameter for choke line.
4. Flanged plug or gate valve -- 2" minimum nominal diameter -- same working pressure as BOP stack.
5. Flanged cross or two (2) flanged tees.
6. Any BOP side outlet flange, located below the bottom ram, must be equipped with a blind flange.

NOTE: Each BOP stack must have separate side outlet connections for kill and choke lines, unless specific approval for a single side-outlet is obtained from the Exxon Division Drilling Manager prior to rig-up. Such approval will not be granted unless the equipment arrangement conforms to the specifications shown on pages 14 and 15 of this Section.

## TYPE- 2 CHOKE MANIFOLD



TO RESERVE PIT  
OR FLARE PIT

DRILLING PLAN  
Sosa Federal #1  
Section 15, T-26-S, R-29-E  
Eddy County, New Mexico

1. Estimated tops of important geological markers:

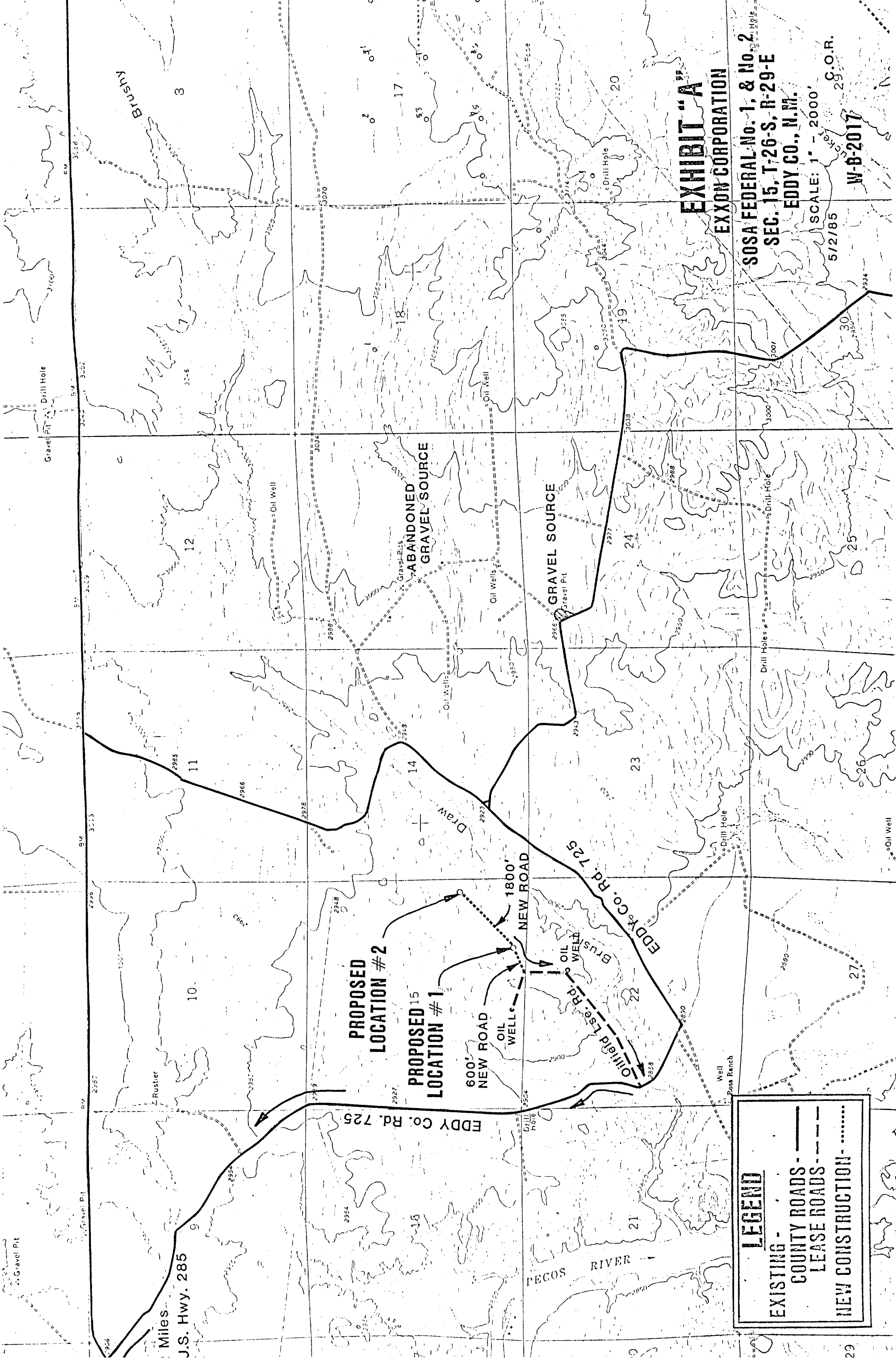
Salt and Anhydrite: 600'  
Delaware: 2900'

2. Estimated depths at which the top of anticipated water, oil, gas or other mineral-bearing formations are expected to be encountered and the plan for protecting such resources.

	<u>Depth</u>	<u>Protection</u>
Deepest FW	500'	Casing & Cement
Delaware Sand	2900'	Casing & Cement

3. Minimum specifications for pressure control equipment:

- A. Wellhead Equipment: Thread type, 2000 psi WP for 8-5/8" x 5-1/2" casing program with 2-7/8" tubing hanger.
- B. Blowout Preventers: Refer to attached drawings and lists of equipment titled "Type RRA" for description of BOP stacks and choke manifold.
- C. BOP Control Unit: Unit will be hydraulically operated and have two control systems.
- D. Testing: Upon installation, the type RRA BOP on the 8-5/8" surface casing will be tested to a low pressure (200-300 psi) and to a high pressure of 2000 psi. Casing rams will be tested in a like manner. An operational test of the blowout preventers will be performed on each round trip, (but not more than once each day); the annular and pipe ram preventers will be closed on drill pipe and the blind rams will be closed while pipe is out of the hole.



LEGEND

EXISTING -

COUNTY ROADS - ———

LEASE ROADS - - - - -

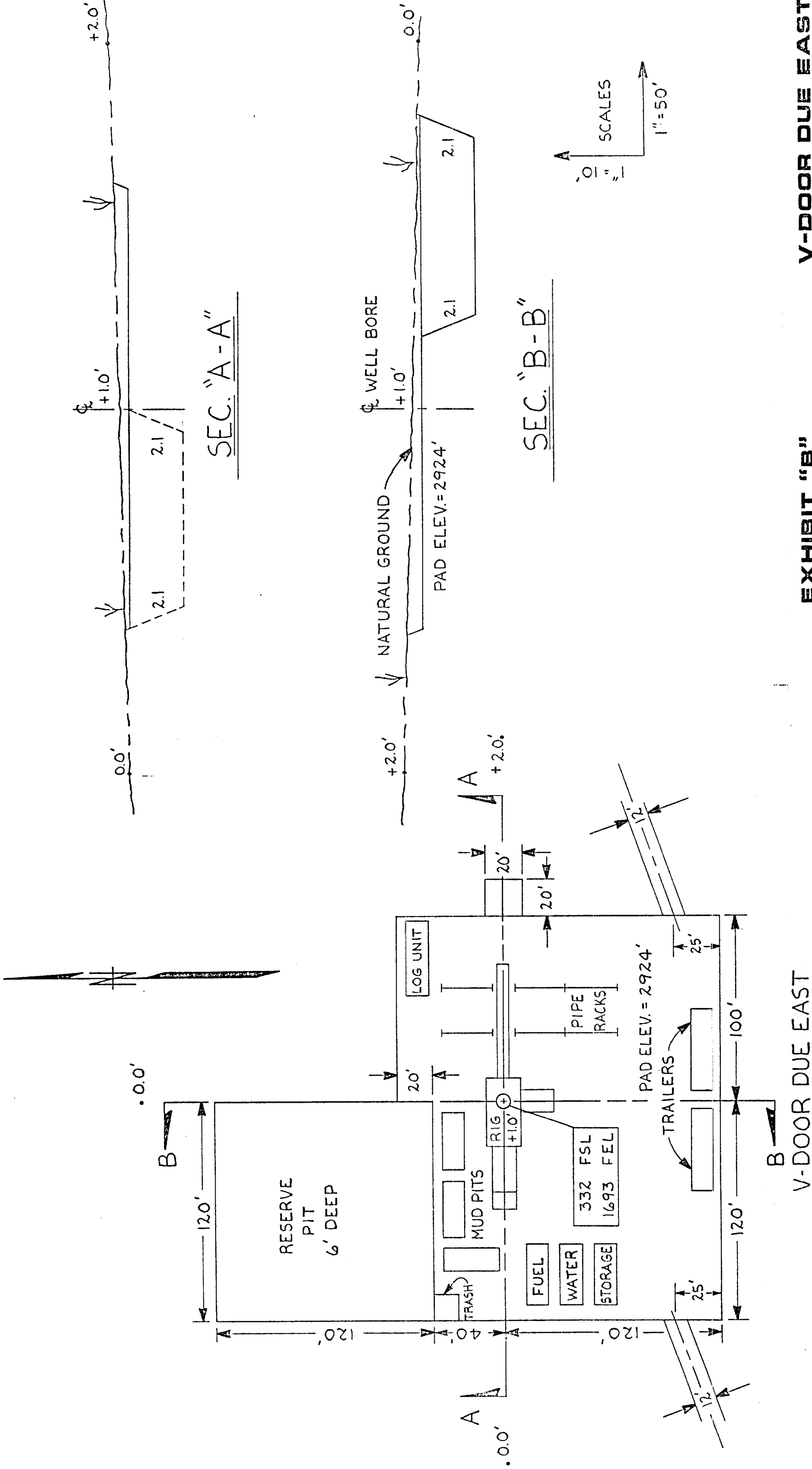
NEW CONSTRUCTION - ·····

EXHIBIT "A"  
EXXON CORPORATION

SOSA FEDERAL No. 1, & No. 2  
SEC. 15, T-26-S, R-29-E  
EDDY CO., N.M.

SCALE: 1" = 2000'  
5/2/85 C.O.R.

W-B-2017



V-DOOR DUE EAST

+2.0'

PLAN VIEW

SCALE: 1" = 50'

EXHIBIT "B"

V-DOOR DUE EAST

EXXON COMPANY, USA (a division of Exxon Corporation)  
PRODUCTION DEPARTMENT

WELLSITE LAYOUT TO SERVE SOSA  
FEDERAL No. 1 SEC. 15, T-26-S, R-29-E  
BRUSHY DRAW EDDY CO., N.M.

DRAWN C.O.R.	ENGR. SECTION	DATE 5-6-85	FILE NO.
CHECKED	APPROVED	SCALE SHOWN	W-B-2018