

UNITED STATES
DEPARTMENT OF THE INTERIOR
BUREAU OF LAND MANAGEMENT

APPLICATION FOR PERMIT TO DRILL, DEEPEN, OR PLUG BACK

1a. TYPE OF WORK

DRILL ☒

DEEPEN ☐

PLUG BACK ☐

b. TYPE OF WELL

OIL
WELL ☒

GAS
WELL ☐

OTHER

SINGLE
ZONE ☒

MULTIPLE
ZONE ☐

2. NAME OF OPERATOR

J.C. WILLIAMSON

3. ADDRESS OF OPERATOR

P.O. BOX 16 MIDLAND, TEXAS 79702

4. LOCATION OF WELL (Report location clearly and in accordance with any State requirements.)

At surface 998' FSL & 660' FWL

At proposed prod. zone 998' FSL & 660' FWL

14. DISTANCE IN MILES AND DIRECTION FROM NEAREST TOWN OR POST OFFICE*

14 miles SE of Malaga, New Mexico

15. DISTANCE FROM PROPOSED*

LOCATION TO NEAREST
PROPERTY OR LEASE LINE, FT.
(Also to nearest drig. unit line, if any)

660'

16. NO. OF ACRES IN LEASE

280

17. NO. OF ACRES ASSIGNED
TO THIS WELL

40

18. DISTANCE FROM PROPOSED LOCATION*
TO NEAREST WELL, DRILLING, COMPLETED,
OR APPLIED FOR, ON THIS LEASE, FT.

330'

19. PROPOSED DEPTH

4800'

20. ROTARY OR CABLE TOOLS

Rotary

21. ELEVATIONS (Show whether DF, RT, GR, etc.)

2892.5' GR

22. APPROX. DATE WORK WILL START*

December 30, 1985

23. PROPOSED CASING AND CEMENTING PROGRAM

SIZE OF HOLE	SIZE OF CASING	WEIGHT PER FOOT	SETTING DEPTH	QUANTITY OF CEMENT
12 1/4"	8-5/8"	24#	500'	500 sx sufficient to circulate
7-7/8"	4-1/2"	10.5#	3300'	250 sx

IN ABOVE SPACE DESCRIBE PROPOSED PROGRAM: If proposal is to deepen or plug back, give data on present productive zone and proposed new productive zone. If proposal is to drill or deepen directionally, give pertinent data on subsurface locations and measured and true vertical depths. Give blowout preventer program, if any.

24.

SIGNED

TITLE

Production

DATE

November 12, 1985

(This space for Federal or State office use)

PERMIT NO.

APPROVAL DATE

APPROVED BY

TITLE

DATE

1-2-86

CONDITIONS OF APPROVAL, IF ANY:

APPROVAL SUBJECT TO
GENERAL REQUIREMENTS AND
SPECIAL STIPULATIONS

*See Instructions On Reverse Side

Form 7-1
Supersedes 7-1-1
Effective 1-1-1

All distances must be from the outer boundaries of the Section.

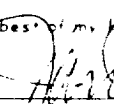
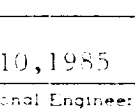
NAME		RANGE		SECTION		TOWNSHIP		COUNTY		STATE	
BRUSHY DRAW		RANGE 10 E		SECTION 10		TOWNSHIP 10 N		COUNTY 10		STATE 10	
Aerial photograph taken on _____ _____ feet from the _____ line _____ feet from the _____ line											
Ground Level Elevation				Producing Formation				Estimated Age (ages)			
1000				DELAWARE				BRUSHY DRAW DELAWARE			
								40			

1. Outline the acreage dedicated to the subject well by colored pencil or hachure marks on the plat below.
2. If more than one lease is dedicated to the well, outline each and identify the ownership thereof (both as to working interest and royalty).
N/A
3. If more than one lease of different ownership is dedicated to the well, have the interests of all owners been consolidated by communitization, unitization, force-pooling, etc?

Yes ☐ No ☒ If answer is "yes," type of consolidation: N/A

If answer is "no" list the teners and tract descriptions which have actually been consolidated. (Use reverse side of this form if necessary) N/A

No allowable will be assigned to the well until all interests have been consolidated (by communitization, unitization, forced-pooling, or otherwise) or until a non-standard unit, eliminating such interests, has been approved by the Commission.

CERTIFICATION		
I hereby certify that the information contained herein is true and complete to the best of my knowledge and belief.		
		
JAN PFISTER		
PRODUCTION		
J.C. WILLIAMSON		
DECEMBER 13, 1985		
I hereby certify that the well location shown on this plat was plotted from field notes of actual surveys made by me or under my supervision, and that the same is true and correct to the best of my knowledge and belief.		
Date Surveyed		
DECEMBER 10, 1985		
Registered Professional Engineer and/or Land Surveyor		
		
Certificate No.	JOHN W. WEST,	676
	RONALD J. EIDSON,	3239

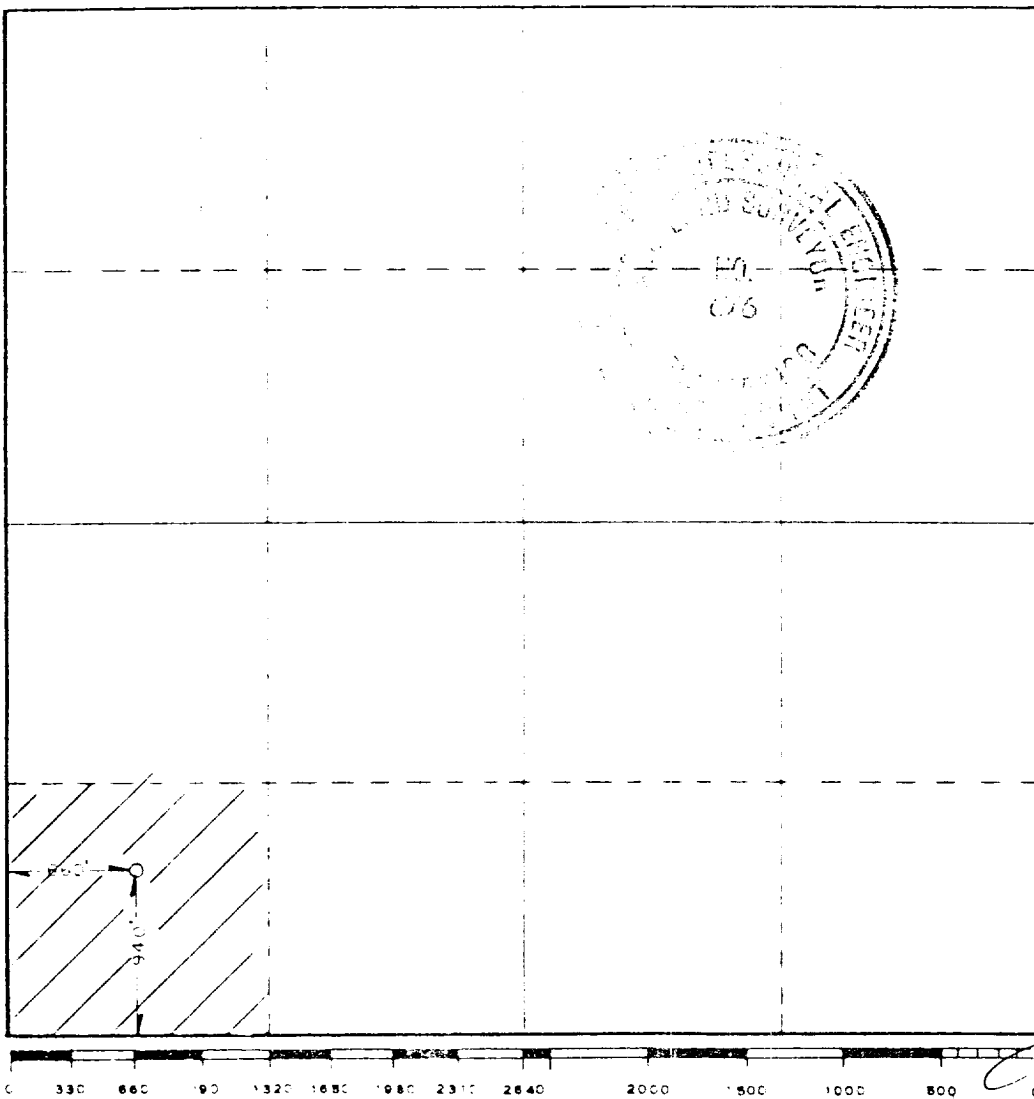
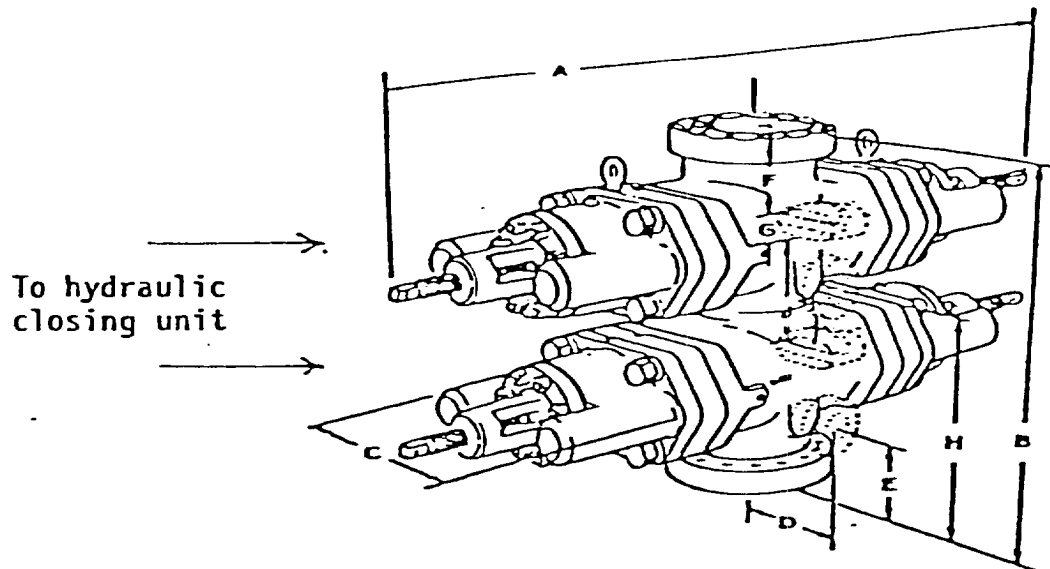


EXHIBIT "E"

BOP Diagram

After 8-5/8" intermediate casing has been set and cemented, an 11" double ram BOP, as shown below will be put on the hole. This blowout preventer will be connected to a hydraulically controlled closing unit. The pressure rating on this BOP is 3000#, and will have blank and 4-1/2" drill pipe rams.



J.C. WILLIAMSON
UCBHWV FEDERAL #8

SUPPLEMENTAL DRILLING DATA

J. C. WILLIAMSON
UCBHW FEDERAL # 8

1. SURFACE FORMATION: Quaternary Alluvium

2. ESTIMATED TOPS OF GEOLOGIC MARKERS:

Rustler Anhydrite	450'
Lamar Shale	3000'
Ramsey Sand	3025'
Olds Sand	3050'

3. ANTICIPATED POSSIBLE WATER AND HYDROCARBON BEARING ZONES:

Fresh Water	above 100'
Delaware (oil)	3025'-3075'

4. PROPOSED CASING AND CEMENTING PROGRAM:

Casing program is shown on Form 9-331 C.

Hole for surface casing will be drilled to a depth below fresh water zones. 8-5/8" Surface casing will be run to bottom and cemented to the surface to protect fresh water zones.

4-1/2" production casing will be cemented at a total depth if significant shows are encountered in the upper Delaware formation.

5. PRESSURE CONTROL EQUIPMENT:

Pressure control equipment will consist of a double ram hydraulically controlled blow out preventer. This BOP will be put on the hole after the setting of 8-5/8" surface casing.

6. CIRCULATING MEDIUM:

The circulating medium will be fresh water down to 500 feet and brine water in the rest of the hole.

J.C. WILLIAMSON
UCBHW FEDERAL #8

UCBHW FEDERAL #8

EXHIBIT "A"

JAL ORLA
HIGHWAY

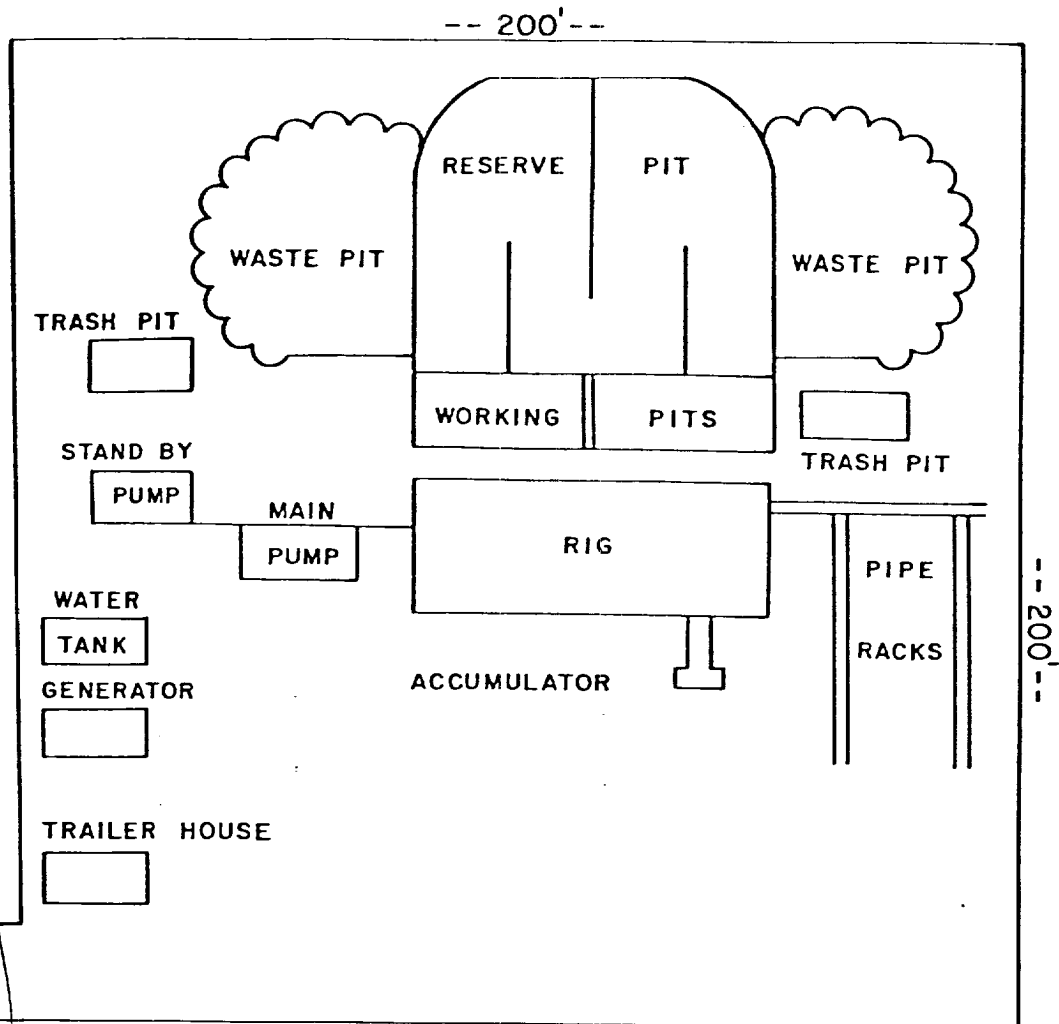
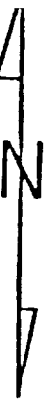


EXHIBIT "D"

J.C. WILLIAMSON

UCBHW FEDERAL #8

Sec. 25, T-26-S, R-29-E

EDDY CO., NM