

50-015-25541

STATE OF NEW MEXICO  
ENERGY AND MINERALS DEPARTMENT

## OIL CONSERVATION DIVISION

Form C-101  
Revised 10-1-78

NO. OF COPIES RECEIVED	
DISTRIBUTION	
SANTA FE	✓
FILE	✓
U.S.G.S.	✓
LAND OFFICE	✓
OPERATOR	✓

P. O. BOX 8688  
SANTA FE, NEW MEXICO 87501

JAN 20 1986

O. C. D.  
ARTESIA, OFFICE

5A. Indicate Type of Lease

STATE ☒ FEDERAL ☐

5. State Oil &amp; Gas Lease No.

L-6867-3

## APPLICATION FOR PERMIT TO DRILL, DEEPEN, OR PLUG BACK

a. Type of Work

DRILL ☒DEEPEN ☐PLUG BACK ☐

b. Type of Well

OIL WELL ☒GAS WELL ☐

OTHER

SINGLE ZONE ☒MULTIPLE ZONE ☐

c. Name of Operator

The Eastland Oil Company ✓

d. Address of Operator

P.O. Drawer 3488, Midland, Texas 79702

e. Location of Well

UNIT LETTER H

LOCATED 1703

FEET FROM THE North

LINE

AND 990 FEET FROM THE East

LINE OF SEC. 32

TWP. 22S

RGE. 28E

NMPM

7. Unit Agreement Name

8. Farm or Lease Name

State "32"

9. Well No.

6

10. Field and Pool, or Wildcat

Herradura Bend (Delaware)

12. County

Eddy

f. Elevations (show whether DF, RT, etc.)

3033' GR, 3034' DF

21A. Kind &amp; Status Plug. Bond

Blanket on file

21B. Drilling Contractor

Hopi Drilling Co.

19A. Formation

Delaware

20. History or C.T.

Cable Tool

22. Approx. Date Work will start

February 1, 1986

13.

## PROPOSED CASING AND CEMENT PROGRAM

SIZE OF HOLE	SIZE OF CASING	WEIGHT PER FOOT	SETTING DEPTH	SACKS OF CEMENT	EST. TOP
12 1/4"	8-5/8"	24#	375'	250 sx Class C	Circulate
8"	4-1/2"	9.5#	2500'	200 sx 50-50 poz mix 250 sx Lite	Circulate

Drill 8" hole to top of first Delaware sand at approximately 2500' and reduce to 6" before drilling in. Set 4 1/2" casing on top of sand with packer shoe and complete open hole.

Control head installed on 8-5/8" surface casing.

Gamma Ray Log will be run from total depth to surface.

Posted API  
ID3-NL  
1-24-86

APPROVAL VALID FOR 80 DAYS  
PERMIT EXPIRES 7-23-86  
UNLESS DRILLING UNDERWAY

ABOVE SPACE DESCRIBE PROPOSED PROGRAM; IF PROPOSAL IS TO DEEPEN OR PLUG BACK, GIVE DATA ON PRESENT PRODUCTIVE ZONE AND PROPOSED NEW PRODUCTION ZONE. GIVE BLOWOUT PREVENTER PROGRAM, IF ANY.

I hereby certify that the information above is true and complete to the best of my knowledge and belief.

Signed George D. Neal Title Vice President-Production Date Jan 17, 1986

(This space for State Use) Original Signed By

Mike Williams  
Oil & Gas Inspector

APPROVED BY \_\_\_\_\_ DATE \_\_\_\_\_

CONDITIONS OF APPROVAL, IF ANY:

JAN 23 1986

NEW MEXICO OIL CONSERVATION COMMISSION  
WELL LOCATION AND ACREAGE DEDICATION PLAT

Form C-102  
Supersedes C-128  
Effective 1-1-65

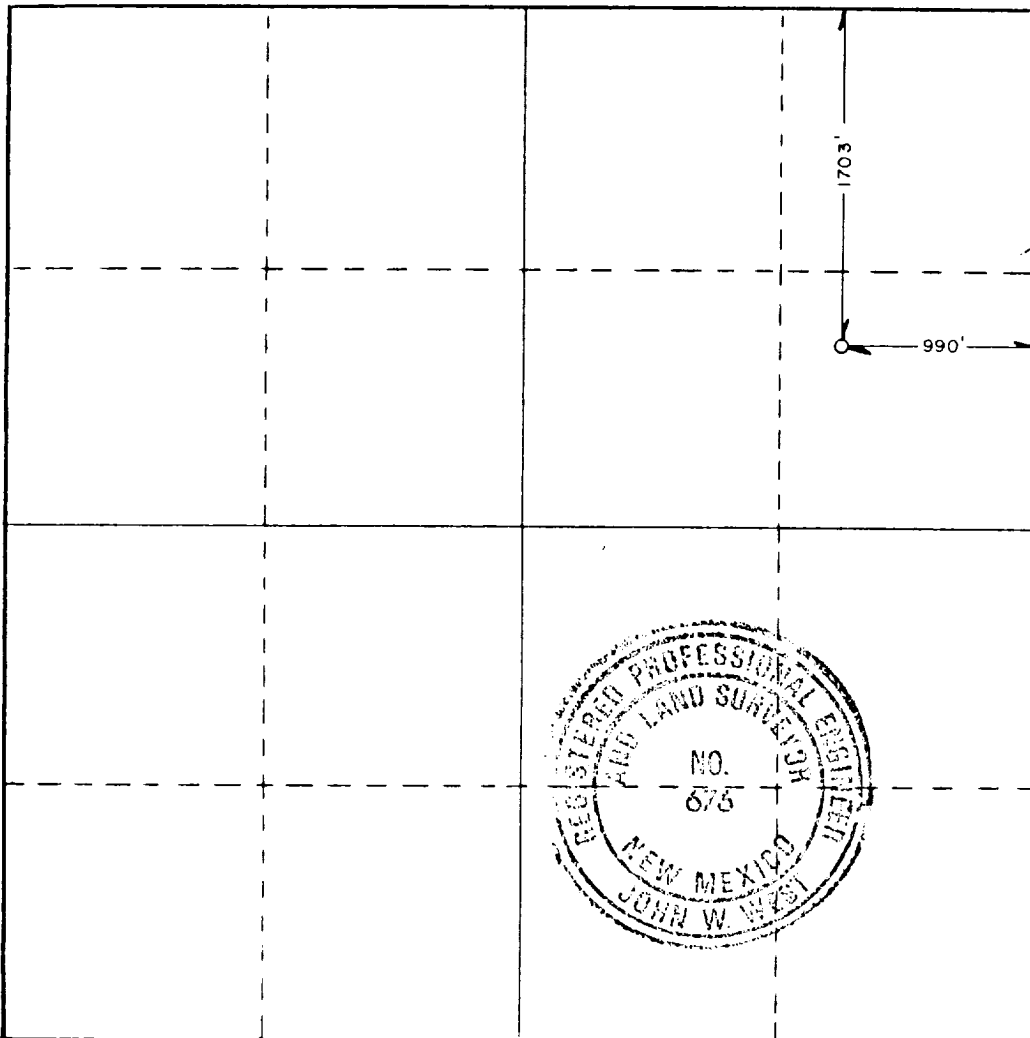
All distances must be from the outer boundaries of the Section

Operator THE EASTLAND OIL COMPANY		Lease STATE 32		Well No. 6
Unit Letter H	Section 32	Township 22 SOUTH	Range 28 EAST	County EDDY
Actual Footage Location of Well: 1703 feet from the NORTH line and 990 feet from the EAST line				
Ground Level Elev. 3033.1'	Producing Formation Delaware	Pool Herradura Bend	Dedicated Acreage: 40 Acres	

1. Outline the acreage dedicated to the subject well by colored pencil or hachure marks on the plat below.
  2. If more than one lease is dedicated to the well, outline each and identify the ownership thereof (both as to working interest and royalty).
  3. If more than one lease of different ownership is dedicated to the well, have the interests of all owners been consolidated by communitization, unitization, forced pooling, etc? N/A
- ☐ Yes ☐ No If answer is "yes," type of consolidation \_\_\_\_\_

If answer is "no," list the owners and tract descriptions which have actually been consolidated. (Use reverse side of this form if necessary.) \_\_\_\_\_

No allowable will be assigned to the well until all interests have been consolidated (by communitization, unitization, forced-pooling, or otherwise) or until a non-standard unit, eliminating such interests, has been approved by the Commission.



CERTIFICATION

I hereby certify that the information contained herein is true and complete to the best of my knowledge and belief.

*George D. Neal*  
Name

George D. Neal

Position

Vice President-Production

Company

The Eastland Oil Company

Date

January 17, 1986

I hereby certify that the well location shown on this plat was plotted from field notes of actual surveys made by me or under my supervision, and that the same is true and correct to the best of my knowledge and belief.

Date Surveyed

NOVEMBER 21, 1985

Registered Professional Engineer and/or Land Surveyor

*John W. West*

Certificate No. JOHN W. WEST, 676

RONALD J. FIDSON 3239