

SUPPLEMENTAL DRILLING DATA

J.C. WILLIAMSON
WELL ROSS DRAW #18

1. SURFACE FORMATION: Quaternary

2. ESTIMATED TOPS OF GEOLOGIC MARKERS:

Impervious Dewey Lake	300'
Rustler	600'
Salada	1310'
Castile	1550'
Delaware Lime	3430'
Bone Springs	7300'

3. ANTICIPATED POSSIBLE HYDROCARBON BEARING ZONES:

Delaware sand series 3450'-6850'

4. PROPOSED CASING AND CEMENTING PROGRAM:

Casing program is shown on Form 9-331 C.

Hole for surface casing will be drilled to a depth below fresh water zones. 13-3/8" surface casing will be run to 625 feet, below all fresh water zones and will be cemented to the surface with 650 sacks of Class "C" cement. Cement to circulate.

8-5/8" casing will be run and cemented at 3300 feet, prior to entering Delaware section and will be cemented with 250 sacks of Class "C" cement at 3300 feet, tying same back into salt section.

5-1/2" casing will be run to total depth and will be cemented with approximately 1000 sacks of Class "C" 50-50 poz.

5. PRESSURE CONTROL EQUIPMENT:

Pressure control equipment will consist of a 3000# double ram hydraulically controlled blow out preventer and a 3000# choke manifold.

6. CIRCULATING MEDIUM:

The circulating medium will be fresh water down to 625 feet and brine water in the rest of the hole, once the water saturates itself naturally with salt.

7. AUXILARY EQUIPMENT:

Drill string safety valves will be maintained on the rig floor while drilling operations are in progress.

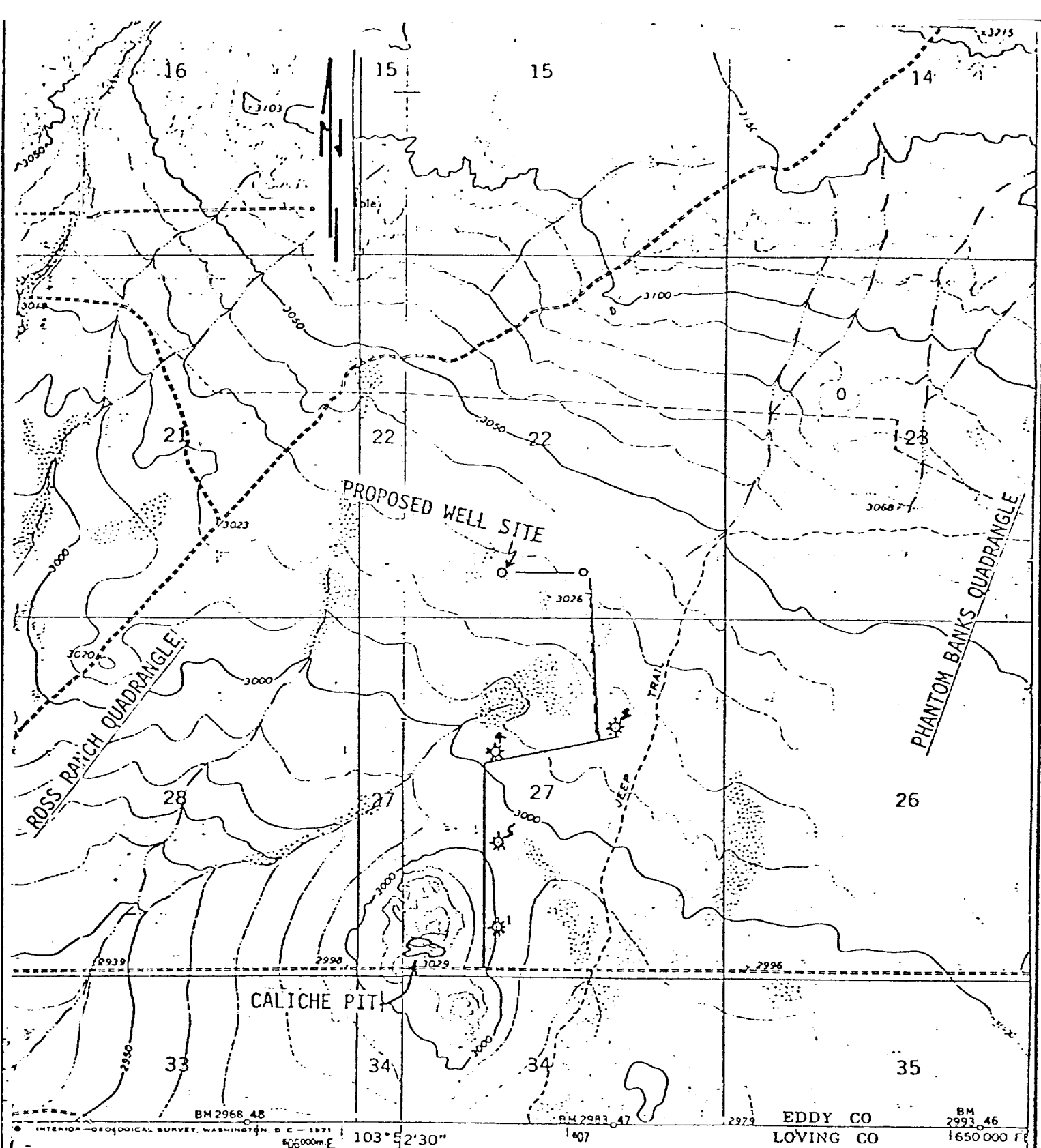
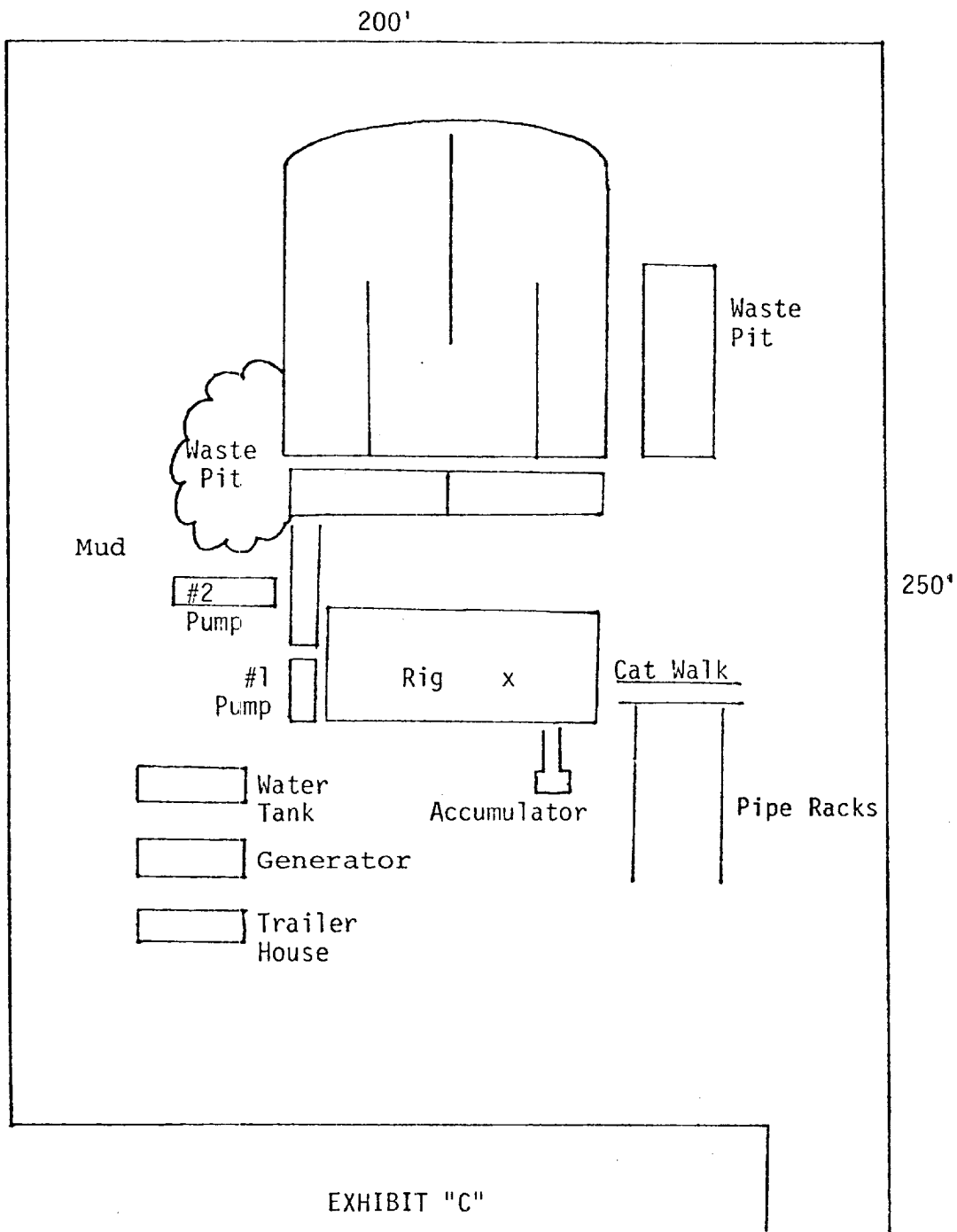


EXHIBIT "D"

J.C. WILLIAMSON
WELL NO. 18 ROSS DRAW UNIT
660' FSL & 1980' FWL SEC. 22, T. 26 S. R. 30 E.
EDDY COUNTY, N.M.

TOPO PLAT



J.C. WILLIAMSON
ROSS DRAW UNIT # 18
660' FSL & 1980' FWL
Section 22, T-26-S, R-30-E
Eddy County, New Mexico