

NEW OIL CONS. COMMISSION
SUBMIT IN TRI-CATE*
Drawer DD
(Other instructions on reverse side)
30-015-25550
Form approved.
Budget Bureau No. 1004-0136
Expires August 31, 1985

UNITED STATES
DEPARTMENT OF THE INTERIOR
BUREAU OF LAND MANAGEMENT

APPLICATION FOR PERMIT TO DRILL, DEEPEN, OR PLUG BACK

1a. TYPE OF WORK

DRILL ☒

DEEPEN ☐

PLUG BACK ☐

b. TYPE OF WELL

OIL WELL ☒

GAS WELL ☐

OTHER

SINGLE ZONE ☐

MULTIPLE ZONE ☐

2. NAME OF OPERATOR

J.C. WILLIAMSON ✓

3. ADDRESS OF OPERATOR

P.O. BOX 16 MIDLAND, TEXAS 79702

4. LOCATION OF WELL (Report location clearly and in accordance with any State requirements.)*

At surface

660' FNL & 660' FWL

At proposed prod. zone

660' FNL & 660' FWL

14. DISTANCE IN MILES AND DIRECTION FROM NEAREST TOWN OR POST OFFICE*

19 miles Southeast of Malaga, New Mexico

15. DISTANCE FROM PROPOSED*

LOCATION TO NEAREST

PROPERTY OR LEASE LINE, FT.

(Also to nearest drlg. unit line, if any)

660'

18. DISTANCE FROM PROPOSED LOCATION*

TO NEAREST WELL, DRILLING, COMPLETED,

OR APPLIED FOR, ON THIS LEASE, FT.

660'

16. NO. OF ACRES IN LEASE

194.62

19. PROPOSED DEPTH

7000'

17. NO. OF ACRES ASSIGNED TO THIS WELL

40

20. ROTARY OR CABLE TOOLS

Rotary

21. ELEVATIONS (Show whether DF, RT, GR, etc.)

2996.2' GR

22. APPROX. DATE WORK WILL START*

March 1, 1986

23. PROPOSED CASING AND CEMENTING PROGRAM

SIZE OF HOLE	SIZE OF CASING	WEIGHT PER FOOT	SETTING DEPTH	QUANTITY OF CEMENT
17-1/2"	13-3/8"	54.5#	600'	660 sx circulate
11"	8-5/8"	24# & 32#	3300'	250 sx tie back to base of salt
7-7/8"	5-1/2"	15.5#	7000'	1000 sx in 2 stages

RECEIVED BY

JAN 27 1986

O. C. D.
ARTESIA, OFFICE

IN ABOVE SPACE DESCRIBE PROPOSED PROGRAM: If proposal is to deepen or plug back, give data on present productive zone and proposed new productive zone. If proposal is to drill or deepen directionally, give pertinent data on subsurface locations and measured and true vertical depths. Give blowout preventer program, if any.

24.

SIGNED

Jan. Defister

TITLE

Production

DATE

11-26-85

(This space for Federal or State office use)

PERMIT NO.

APPROVAL DATE

APPROVED BY

TITLE

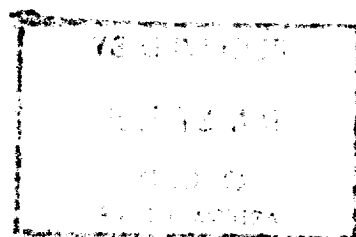
DATE

1-24-86

CONDITIONS OF APPROVAL, IF ANY:

*See Instructions On Reverse Side

APPROVAL SUBJECT TO
GENERAL REQUIREMENTS AND
SPECIAL STIPULATIONS



MEXICO OIL CONSERVATION COMMISSION
WELL LOCATION AND ACREAGE DEDICATION PLAT

Form C-102
Supersedes C-128
Effective 1-1-65

All distances must be from the outer boundaries of the Section

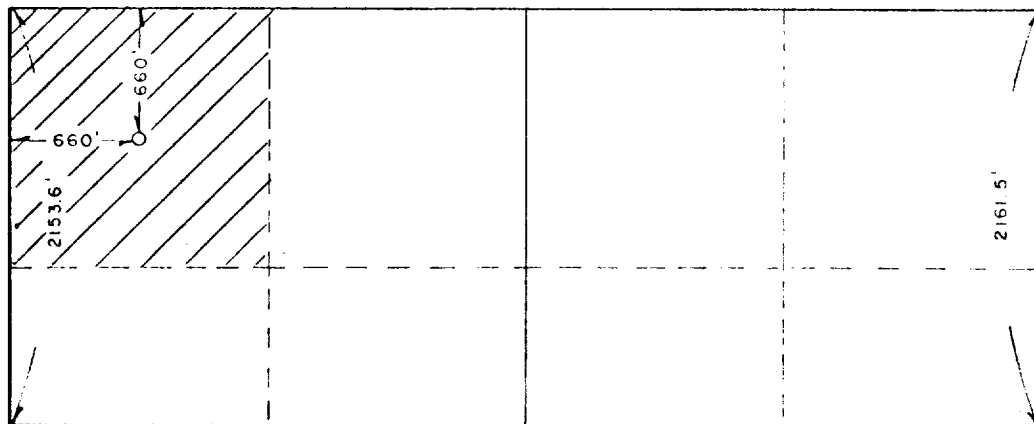
Operator J.C. WILLIAMSON			Lease ROSS DRAW UNIT			Well No. 19		
Unit Letter D	Section 34	Township 26 SOUTH	Range 30 EAST	County EDDY				
Actual Footage Location of Well: 660 feet from the NORTH line and 660 feet from the WEST line								
Ground Level Elev. 2996.2'		Producing Formation DELAWARE		Pool Undesignated Delaware			Dedicated Acreage: 40 Acres	

1. Outline the acreage dedicated to the subject well by colored pencil or hatchure marks on the plat below.
2. If more than one lease is dedicated to the well, outline each and identify the ownership thereof (both as to working interest and royalty). N/A
3. If more than one lease of different ownership is dedicated to the well, have the interests of all owners been consolidated by communization, unitization, force-pooling, etc?

☐ Yes ☐ No If answer is "yes," type of consolidation N/A

If answer is "no," list the owners and tract descriptions which have actually been consolidated. (Use reverse side of this form if necessary.) N/A

No allowable will be assigned to the well until all interests have been consolidated (by communization, unitization, forced-pooling, or otherwise) or until a non-standard unit, eliminating such interests, has been approved by the Commission.



SCALE: 1"=1000'

CERTIFICATION

I hereby certify that the information contained herein is true and complete to the best of my knowledge and belief.

[Signature]

Name
JAN PEISTER

Position
PRODUCTION

Company
J.C. WILLIAMSON

Date
NOVEMBER 26, 1985

I hereby certify that the well location shown on this plat was plotted from field notes of actual surveys made by me or under my supervision, and that the same is true and correct to the best of my knowledge and belief.

Date Surveyed
OCTOBER 12, 1985

Registered Professional Engineer and/or Land Surveyor
[Signature]

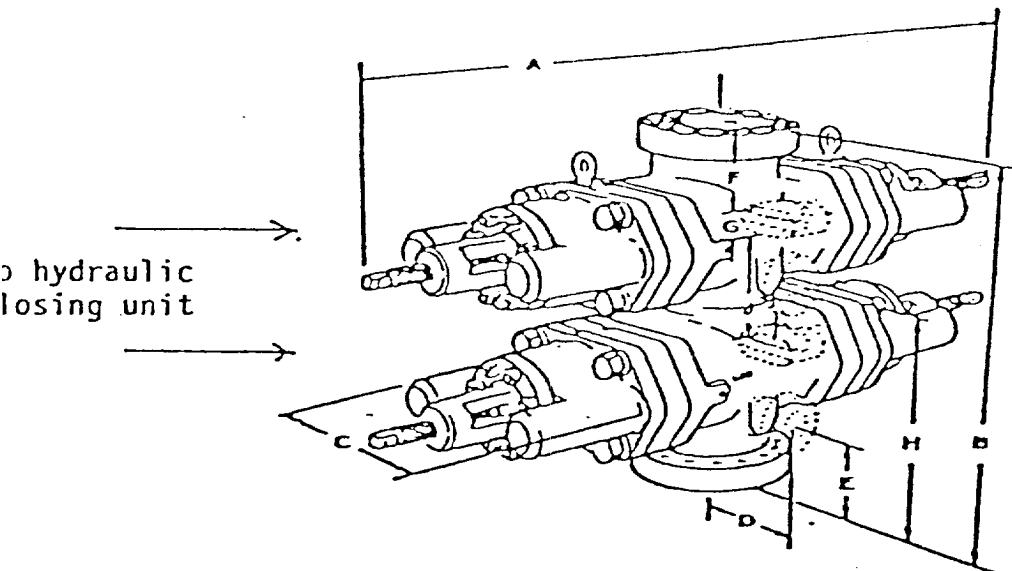
Certificate No. **JOHN W. WEST 678**

Ronald J. Eidson 3239

EXHIBIT "E"

BOP Diagram

After 8-5/8" intermediate casing has been set and cement placed around bottom of this pipe, the 13-3/8" casing will be orange peeled into the 8-5/8" casing and then an 11" double ram BOP, as shown below will be put on the hole. This blowout preventer will be connected to a hydraulically controlled closing unit. The pressure rating on this BOP is 3000#, and will have blank and 5-1/2" pipe.



J.C. WILLIAMSON
ROSS DRAW UNIT #19

SUPPLEMENTAL DRILLING DATA

J.C. WILLIAMSON
WELL ROSS DRAW #19

1. SURFACE FORMATION: Quaternary Alluvium

2. ESTIMATED TOPS OF GEOLOGIC MARKERS:

Rustler Anhydrite	575'
Lamar Shale	3500'
Ramsey Sand	3550'
Olds Sand	3400'
Top Cherry Canyon	4450'
Top Brushy Canyon	5500'

3. ANTICIPATED POSSIBLE WATER AND HYDROCARBON BEARING ZONES:

Fresh Water	above 200'
Delaware (oil)	3300' - 3400'
Brushy Canyon (oil)	5500' - 5800'

4. PROPOSED CASING AND CEMENTING PROGRAM:

Casing program is shown on Form 9-331 C.

Hole for surface casing will be drilled to a depth below fresh water zones. 13-3/8" surface casing will be run to 600 feet, below all fresh water zones and will be cemented to the surface with 660 sacks of Class "C" cement.

8-5/8" casing will be run and cemented at 3300 feet, prior to entering Delaware section and will be cemented with 250 sacks of Class "C" cement at 3300 feet, tying same back into salt section.

5-1/2" casing will be run to total depth and will be cemented at a total depth if significant shows are encountered in the Brushy Canyon formation.

5. PRESSURE CONTROL EQUIPMENT:

Pressure control equipment will consist of a 3000# double ram hydraulically controlled blow out preventer and a 3000# choke manifold.

6. CIRCULATING MEDIUM:

The circulating medium will be fresh water down to 600 feet and brine water in the rest of the hole, once the water saturates itself naturally with salt.

7. AUXILARY EQUIPMENT:

Not Applicable.

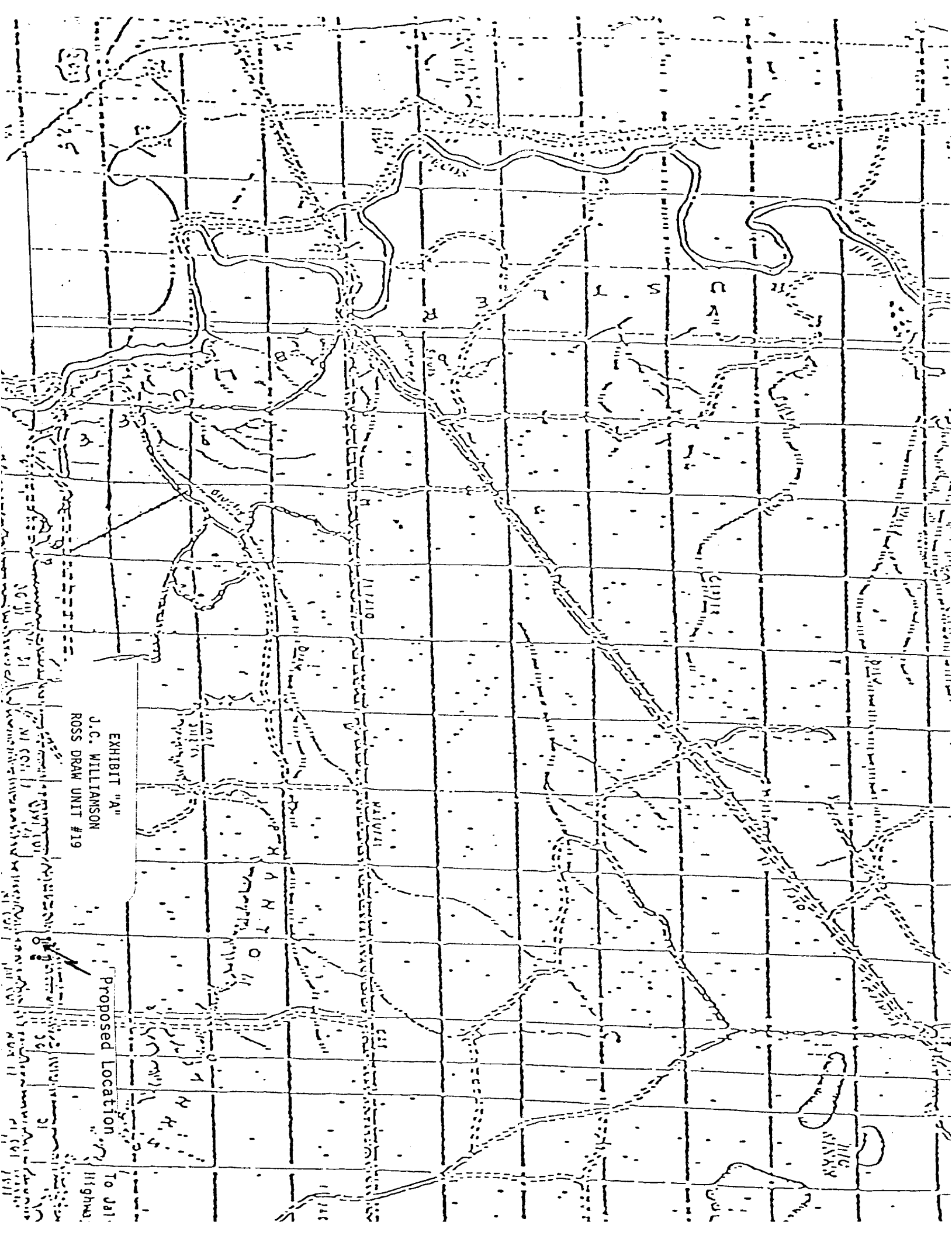


EXHIBIT "A"

J.C. WILLIAMSON
ROSS DRAW UNIT #19

Proposed Location

To Dal
Highway

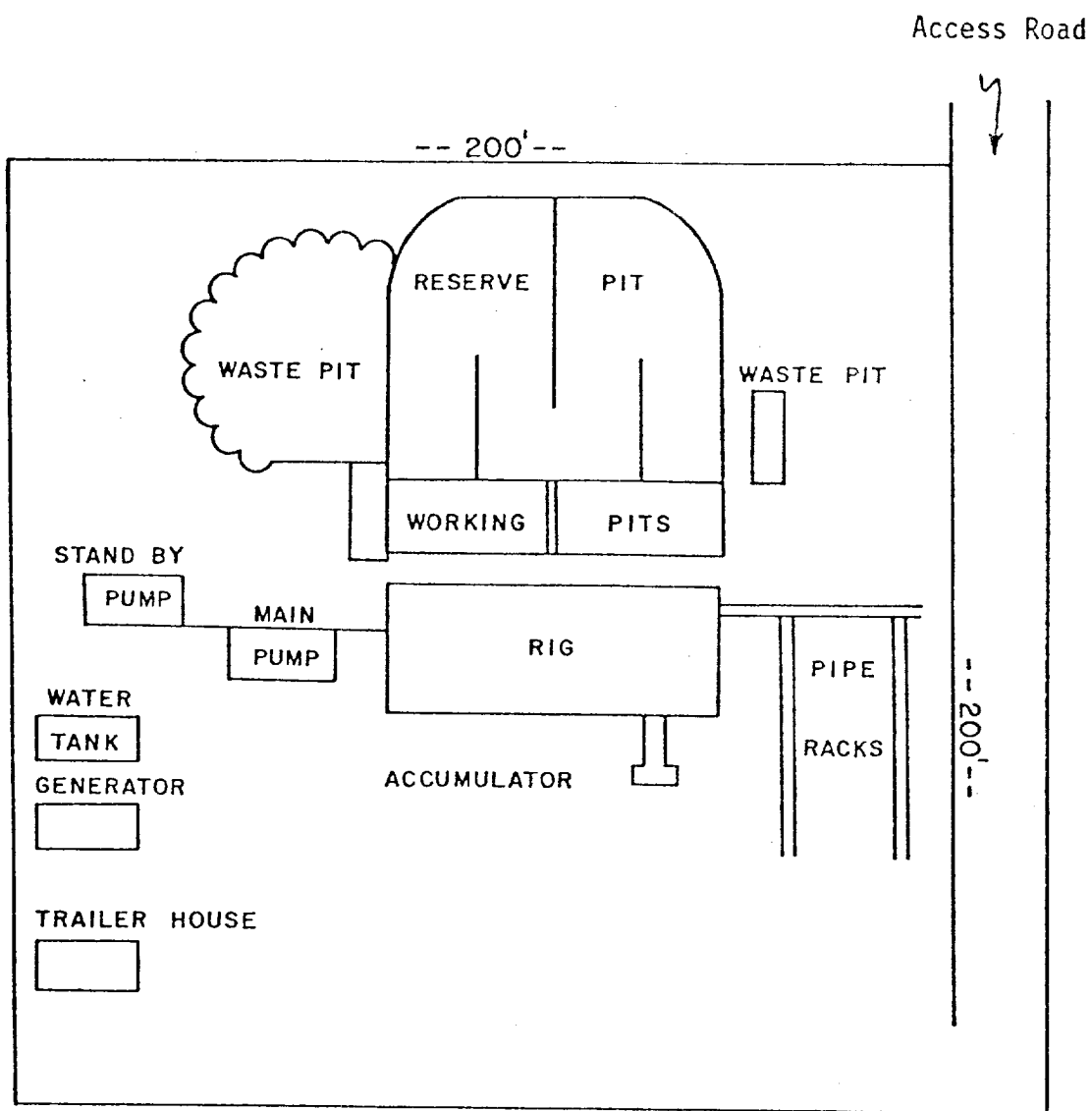


EXHIBIT "D"

J.C. WILLIAMSON
ROSS DRAW UNIT #19