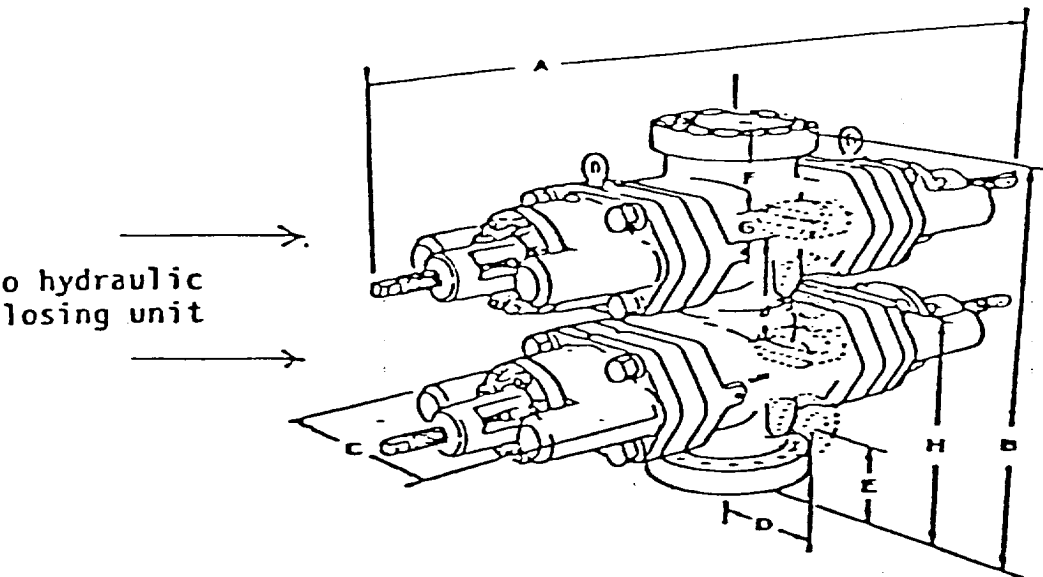


EXHIBIT "E"

BOP Diagram

After 8-5/8" intermediate casing has been set and cement placed around bottom of this pipe, the 13-3/8" casing will be orange peeled into the 8-5/8" casing and then an 11" double ram BOP, as shown below will be put on the hole. This blowout preventer will be connected to a hydraulically controlled closing unit. The pressure rating on this BOP is 3000#, and will have blank and 5-1/2" pipe.



J.C. WILLIAMSON
ROSS DRAW UNIT # 23
26-26-30
EDDY COUNTY, NEW MEXICO