

UNITED STATES  
DEPARTMENT OF THE INTERIOR  
BUREAU OF LAND MANAGEMENT

NM OIL CONS. COMMISSION  
Drawer DD  
Artesia, NM 88210

APPLICATION FOR PERMIT TO DRILL, DEEPEN, OR PLUG BACK

1a. TYPE OF WORK

DRILL ☒

DEEPEN ☐

PLUG BACK ☐

b. TYPE OF WELL

OIL  
WELL ☒

GAS  
WELL ☐

OTHER ☐

SINGLE  
ZONE ☒

MULTIPLE  
ZONE ☐

2. NAME OF OPERATOR

J.C. WILLIAMSON

3. ADDRESS OF OPERATOR

P.O. BOX 16 MIDLAND, TEXAS 79702

4. LOCATION OF WELL (Report location clearly and in accordance with any State requirements.)\*  
At surface

660' FSL & 990' FEL

At proposed prod. zone

660' FSL & 990' FEL

14. DISTANCE IN MILES AND DIRECTION FROM NEAREST TOWN OR POST OFFICE\*

34 miles southeast of Carlsbad, New Mexico

13. DISTANCE FROM PROPOSED\*

LOCATION TO NEAREST  
PROPERTY OR LEASE LINE, FT.  
(Also to nearest drlg. unit line, if any)

660'

16. NO. OF ACRES IN LEASE

640

17. NO. OF ACRES ASSIGNED  
TO THIS WELL

40

18. DISTANCE FROM PROPOSED LOCATION\*  
TO NEAREST WELL, DRILLING, COMPLETED,  
OR APPLIED FOR, ON THIS LEASE, FT.

1000'

19. PROPOSED DEPTH

6850'

20. ROTARY OR CABLE TOOLS

Rotary

21. ELEVATIONS (Show whether DF, RT, GR, etc.)

3034.4' GR

22. APPROX. DATE WORK WILL START\*

Upon Approval

23.

PROPOSED CASING AND CEMENTING PROGRAM

SIZE OF HOLE	SIZE OF CASING	WEIGHT PER FOOT	SETTING DEPTH	QUANTITY OF CEMENT
17-1/2"	13-3/8"	54.5#	625'	sufficient to circulate
11"	8-5/8"	24# & 23#	3300'	250 sx
7-7/8"	5-1/2"	15.5#	6850'	1000 sx in 2 stages

Producing zones will be perforated and stimulated as necessary

RECEIVED BY

JAN 30 1986

O. C. D.

ARTESIA, OFFICE

IN ABOVE SPACE DESCRIBE PROPOSED PROGRAM: If proposal is to deepen or plug back, give data on present productive zone and proposed new productive zone. If proposal is to drill or deepen directionally, give pertinent data on subsurface locations and measured and true vertical depths. Give blowout preventer program, if any.

24.

SIGNED

TITLE

Production

DATE

October 24, 1985

(This space for Federal or State office use)

PERMIT NO.

APPROVAL DATE

APPROVED BY

TITLE

DATE

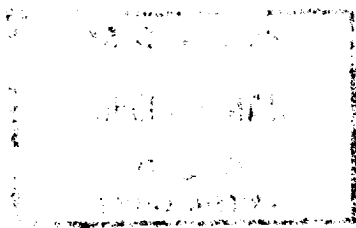
1-29-86

CONDITIONS OF APPROVAL, IF ANY:

APPROVAL SUBJECT TO  
GENERAL REQUIREMENTS AND  
SPECIAL STIPULATIONS

\*See Instructions On Reverse Side

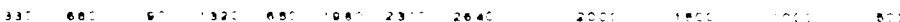
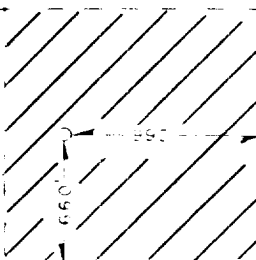
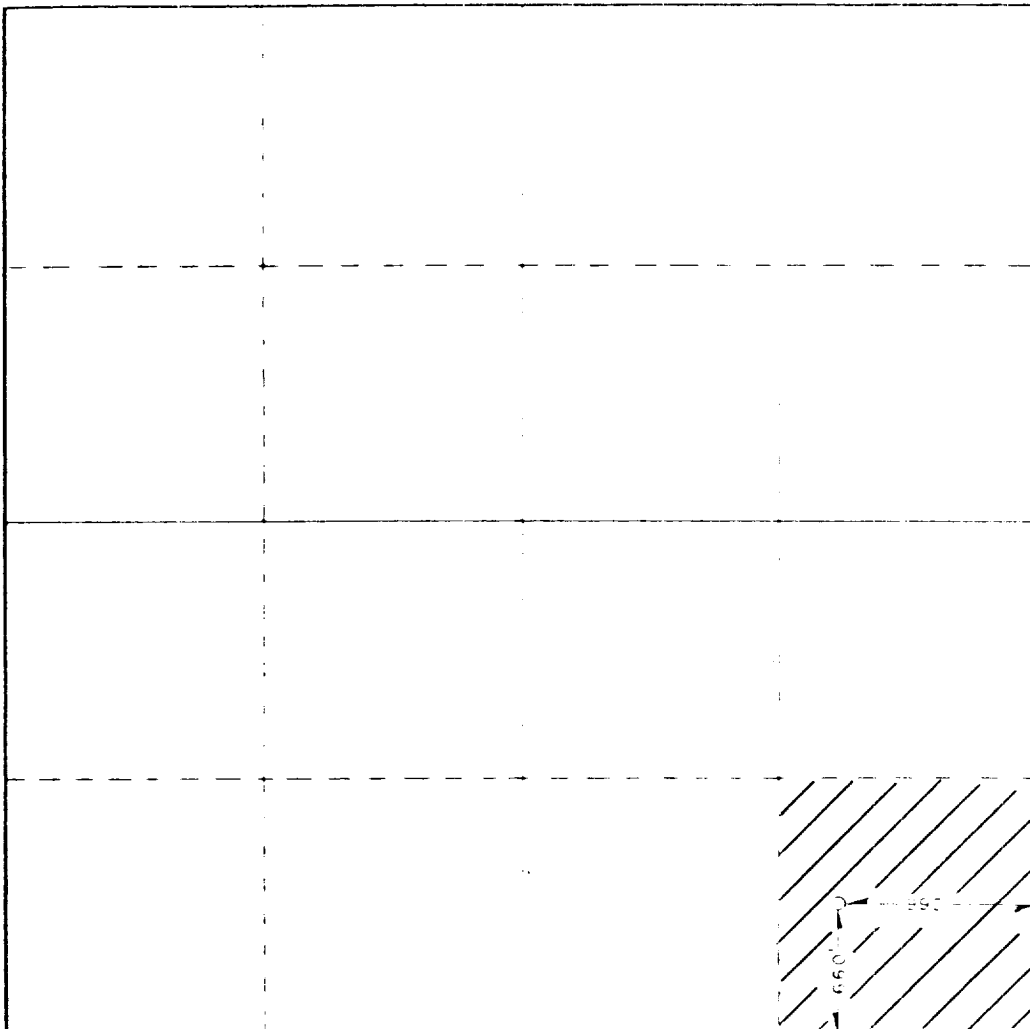
Title 18 U.S.C. Section 1001, makes it a crime for any person knowingly and willfully to make to any department or agency of the United States any false, fictitious or fraudulent statements or representations as to any matter within its jurisdiction.



[illegible][illegible]

- As an alternative will be assigned to the well until all interests have been consolidated. This is communitization or unitization, forced pooling, or otherwise, or until a non-standard unit, eliminating such interests, has been approved by the Commission.

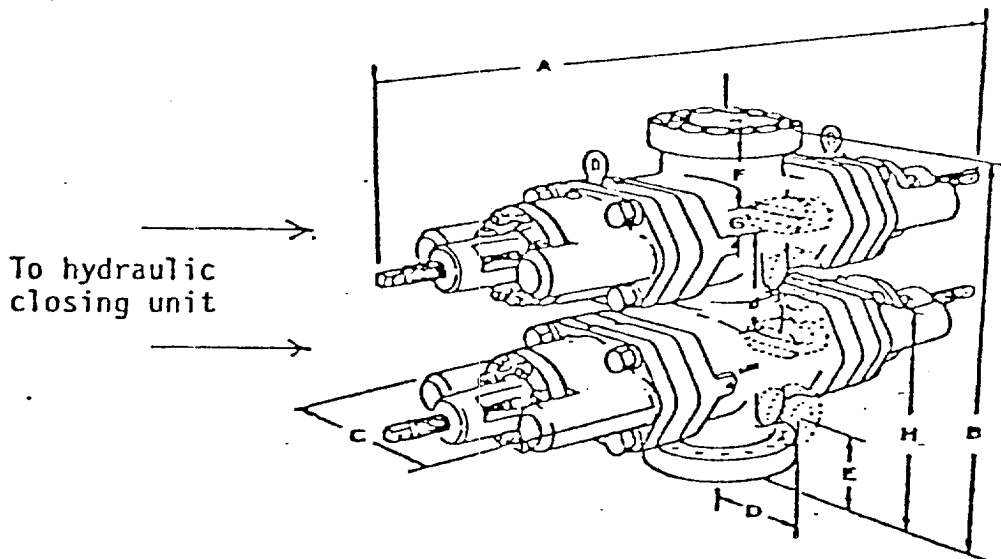
Certificate No JOHN W WEST 674  
RONALD J HOSIN 3234



## EXHIBIT "E"

### BOP Diagram

After 13-3/8" surface casing has been set and cement circulated to the surface, an 11" double ram BOP, as shown below will be put on the hole. This blowout preventer will be connected to a hydraulically controlled closing unit. The pressure rating on this BOP is 3000#, and will have blank and 4-1/2" pipe rams.



J.C. Williamson  
Ross Draw Unit #22  
660' FSL & 990' FEL  
Sec. 22 T-26-S R-30-E  
Eddy County, New Mexico

## SUPPLEMENTAL DRILLING DATA

J.C. WILLIAMSON  
WELL ROSS DRAW #22

1. SURFACE FORMATION: Quaternary

2. ESTIMATED TOPS OF GEOLOGIC MARKERS:

Impervious Dewey Lake	300'
Rustler	600'
Salada	1310'
Castile	1550'
Delaware Lime	3430'
Bone Springs	7300'

3. ANTICIPATED POSSIBLE HYDROCARBON BEARING ZONES:

Delaware sand series                      3450'-6850'

4. PROPOSED CASING AND CEMENTING PROGRAM:

Casing program is shown on Form 9-331 C.

Hole for surface casing will be drilled to a depth below fresh water zones. 13-3/8" surface casing will be run to 625 feet, below all fresh water zones and will be cemented to the surface with 650 sacks of Class "C" cement. Cement to circulate.

8-5/8" casing will be run and cemented at 3300 feet, prior to entering Delaware section and will be cemented with 250 sacks of Class "C" cement at 3300 feet, tying same back into salt section.

5-1/2" casing will be run to total depth and will be cemented with approximately 1000 sacks of Class "C" 50-50 poz.

5. PRESSURE CONTROL EQUIPMENT:

Pressure control equipment will consist of a 3000# double ram hydraulically controlled blow out preventer and a 3000# choke manifold.

6. CIRCULATING MEDIUM:

The circulating medium will be fresh water down to 625 feet and brine water in the rest of the hole, once the water saturates itself naturally with salt.

7. AUXILARY EQUIPMENT:

Drill string safety valves will be maintained on the rig floor while drilling operations are in progress.

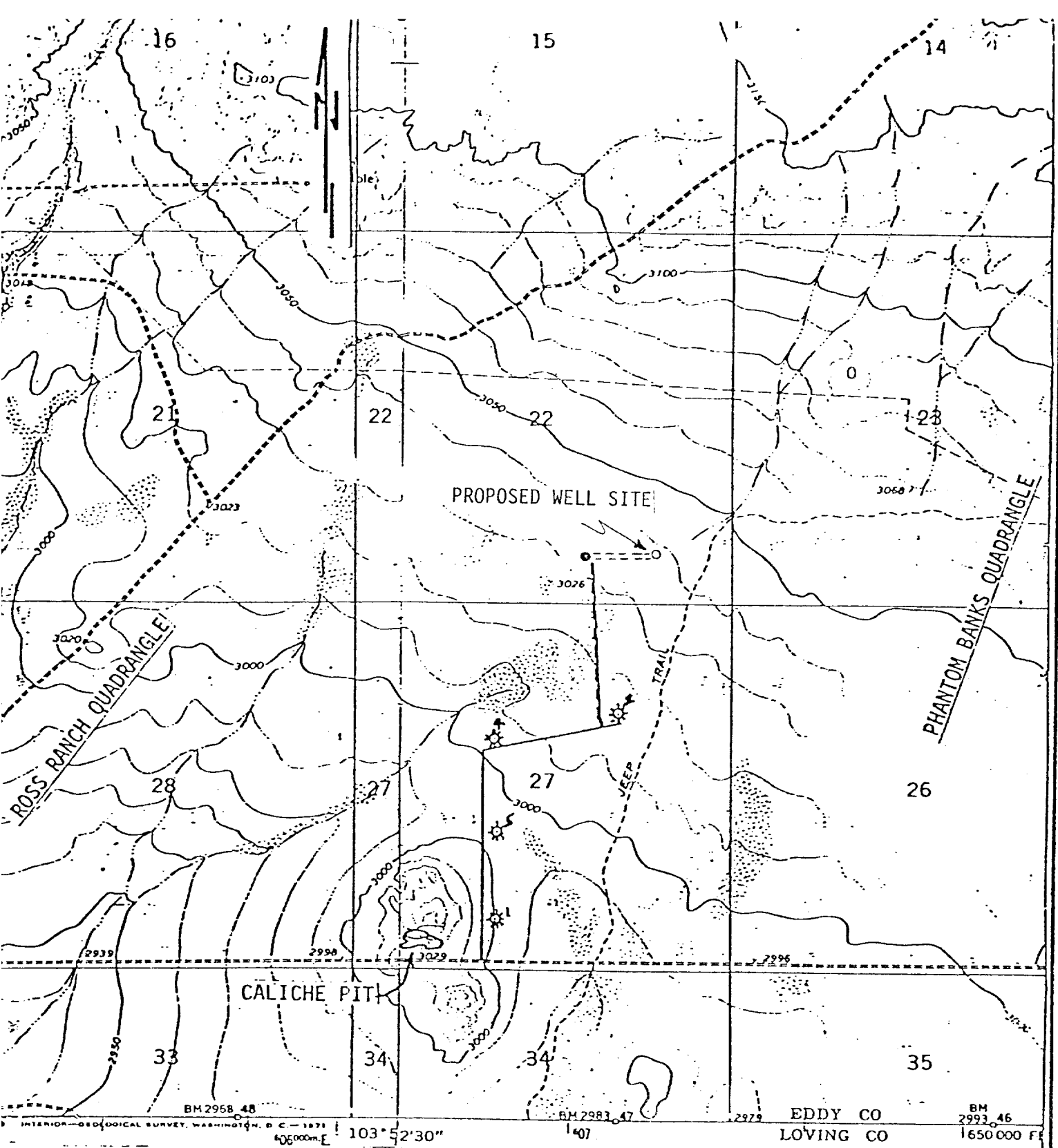


EXHIBIT "D"

J.C. WILLIAMSON  
WELL NO. 22 ROSS DRAW UNIT  
660' FSL & 990' FEL SEC. 22, T. 26 S. R. 30 E.  
EDDY COUNTY, N.M.

TOPO PLAT

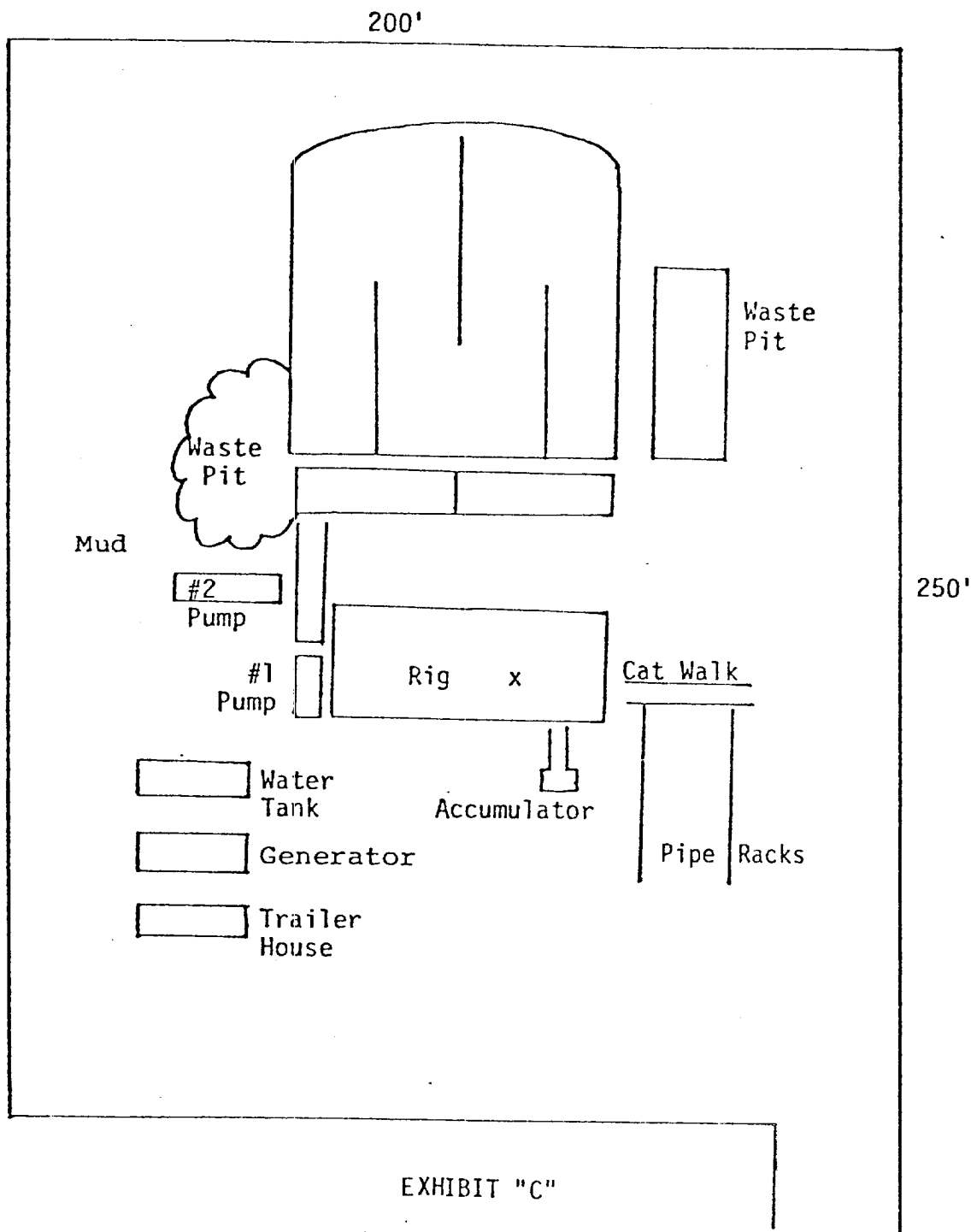


EXHIBIT "C"

J.C. WILLIAMSON  
ROSS DRAW UNIT # 22  
660' FSL & 990' FEL  
Section 22, T-26-S, R-30-E  
Eddy County, New Mexico