

UNITED STATES
DEPARTMENT OF THE INTERIOR
GEOLOGICAL SURVEYIN OIL COND. SUBMITTAL LICATE*
Budget Bureau No. 42-R1425.
(Other instructions on reverse side)Form approved.
Budget Bureau No. 42-R1425.

30-015-25608 C/SF

APPLICATION FOR PERMIT TO DRILL, DEEPEN, OR PLUG BACK			
1a. TYPE OF WORK DRILL <input checked="" type="checkbox"/> DEEPEN <input type="checkbox"/> PLUG BACK <input type="checkbox"/>			
b. TYPE OF WELL OIL WELL <input checked="" type="checkbox"/> GAS WELL <input type="checkbox"/> OTHER <input type="checkbox"/>			
2. NAME OF OPERATOR Manzano Oil Corporation			
3. ADDRESS OF OPERATOR P.O. Box 571 Roswell, New Mexico 88201			
4. LOCATION OF WELL (Report location clearly and in accordance with any State requirements.)* At surface 660' FSL & 1650 FWL At proposed prod. zone Same			
14. DISTANCE IN MILES AND DIRECTION FROM NEAREST TOWN OR POST OFFICE* 17 miles south of Artesia, NM			
15. DISTANCE FROM PROPOSED* LOCATION TO NEAREST PROPERTY OR LEASE LINE, FT. (Also to nearest drig. unit line, if any)		16. NO. OF ACRES IN LEASE	
660'		120	
18. DISTANCE FROM PROPOSED LOCATION* TO NEAREST WELL, DRILLING, COMPLETED, OR APPLIED FOR, ON THIS LEASE, FT.		19. PROPOSED DEPTH	
N/A		3120'	
21. ELEVATIONS (Show whether DF, RT, GR, etc.) 3409 GL		22. APPROX. DATE WORK WILL START* April 15, 1986	
23. PROPOSED CASING AND CEMENTING PROGRAM			
SIZE OF HOLE	SIZE OF CASING	WEIGHT PER FOOT	SETTING DEPTH
12 1/4"	8 5/8"	24#	1225'
7 7/8"	5 1/2"	15.5#	3120'
		QUANTITY OF CEMENT	
		450 Sx Howco lite +150 Sx "C" Circ.	
		200 Sx 50/50 Poz mix	

Mud Program:

- 0' - 1225' Drill with fresh water and native mud.
- 1225' - 2500' Drill with fresh water and native mud.
- 2500' - 3120' Mud up with coring quality mud.

BOP Program:

A 10" Series 900 Shaffer Type F double BOP and a 3000# Dual control Koomey BOP Closing unit will be installed and tested daily.

Posted ID-
API-NL
4-18-86

IN ABOVE SPACE DESCRIBE PROPOSED PROGRAM: If proposal is to deepen or plug back, give data on present productive zone and proposed new productive zone. If proposal is to drill or deepen directionally, give pertinent data on subsurface locations and measured and true vertical depths. Give blowout preventer program, if any.

24. SIGNED [Signature] Agent for
TITLE Manzano Oil Corporation DATE March 21, 1986
(This space for Federal or State office use)

PERMIT NO. Orig. Sgd. 30-015-25608 APPROVAL DATE _____
APPROVED BY [Signature] TITLE _____ DATE 4-8-86
CONDITIONS OF APPROVAL, IF ANY:

APPROVAL SUBJECT TO
GENERAL REQUIREMENTS AND
SPECIAL STIPULATIONS
ATTACHED

NEW MEXICO OIL CONSERVATION COMMISSION
WELL LOCATION AND ACREAGE DEDICATION PLAT

Form C-102
Supersedes C-128
Effective 1-1-65

All distances must be from the outer boundaries of the Section.

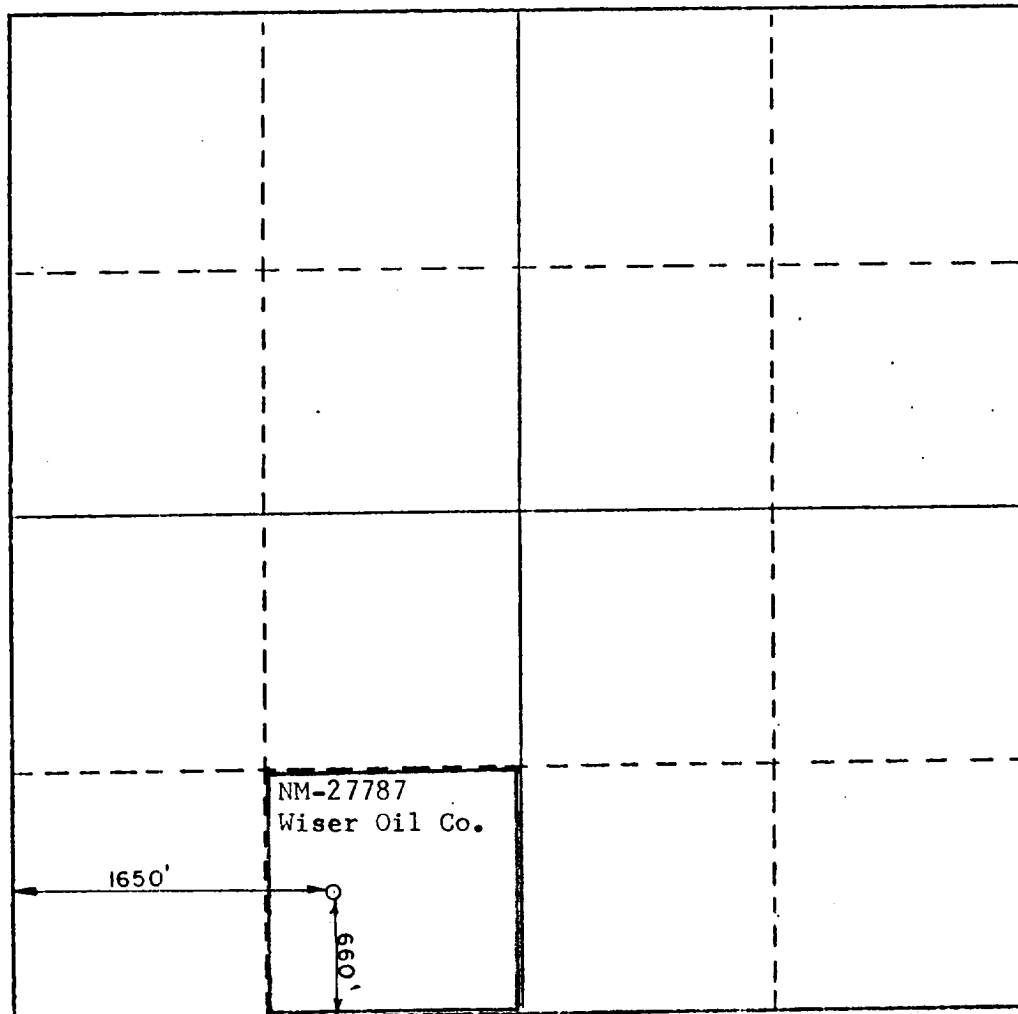
Operator Manzano Oil Corporation			Lease Wiser Federal		Well No. 1
Unit Letter N	Section 25	Township 19 South	Range 25 East	County Eddy	
Actual Footage Location of Well: 660 feet from the South line and 1650 feet from the West line					
Ground Level Elev. 3409	Producing Formation Yeso		Pool Undesignated		Dedicated Acreage 40

1. Outline the acreage dedicated to the subject well by colored pencil or hatchure marks on the plat below.
2. If more than one lease is dedicated to the well, outline each and identify the ownership thereof (both as to working interest and royalty).
3. If more than one lease of different ownership is dedicated to the well, have the interests of all owners been consolidated by communitization, unitization, force-pooling, etc?

☐ Yes ☐ No If answer is "yes," type of consolidation _____

If answer is "no," list the owners and tract descriptions which have actually been consolidated. (Use reverse side of this form if necessary.) _____

No allowable will be assigned to the well until all interests have been consolidated (by communitization, unitization, forced-pooling, or otherwise) or until a non-standard unit, eliminating such interests, has been approved by the Commission.



CERTIFICATION

I hereby certify that the information contained herein is true and complete to the best of my knowledge and belief.

George R. Smith

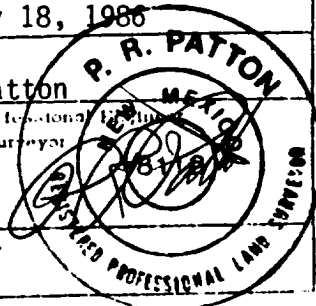
Name
George R. Smith
Position
Agent for
Company
Manzano Oil Corporation
Date
March 21, 1986

I hereby certify that the well location shown on this plat was plotted from field notes of actual surveys made by me or under my supervision, and that the same is true and correct to the best of my knowledge and belief.

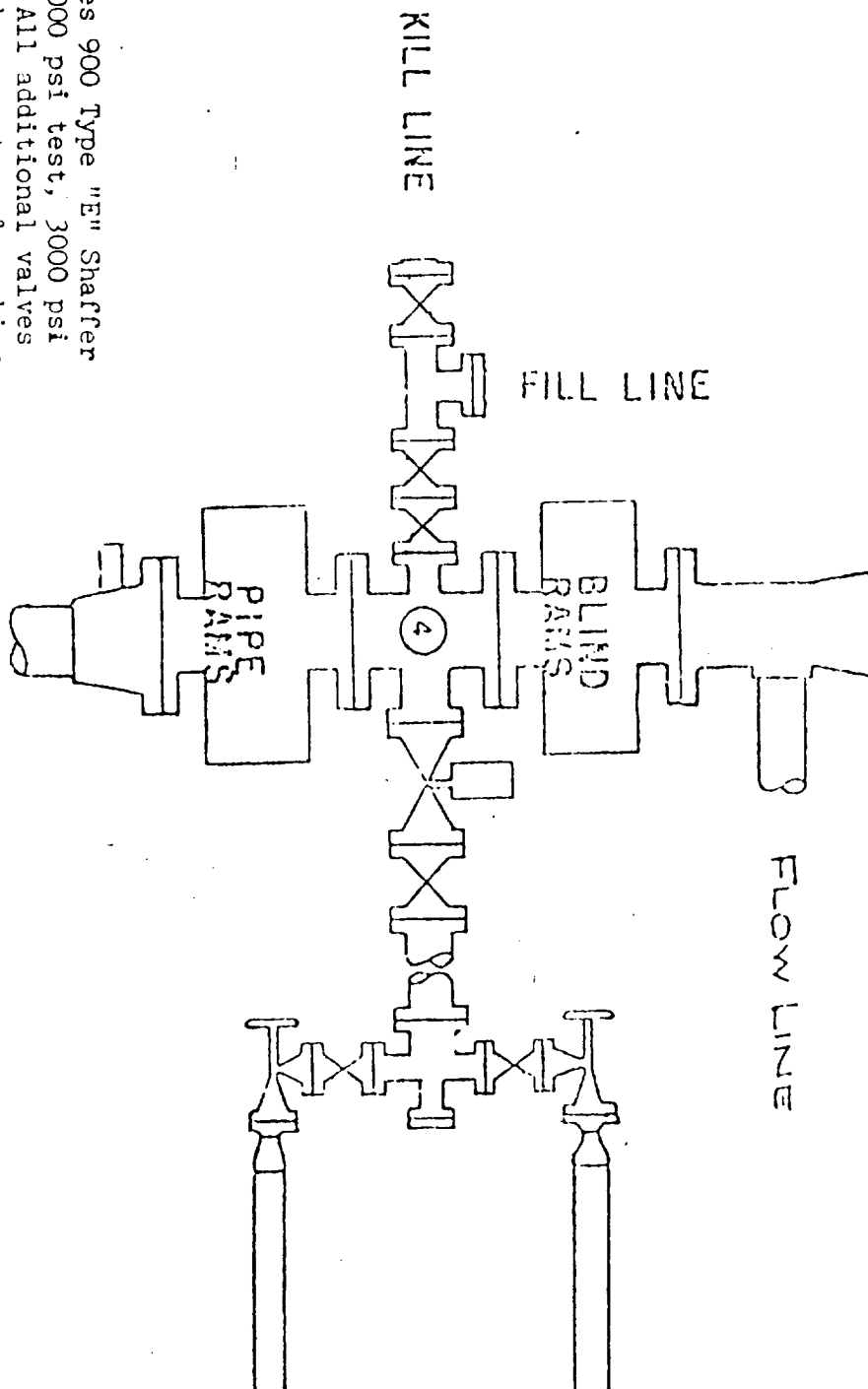
February 18, 1986

Date Surveyed
P. R. Patton
Registered Professional Engineer
and/or Land Surveyor

8112
Certificate No.



WEK DRILLING CO., INC. - Rig 1 & 3
BLOWOUT PREVENTER SPECIFICATION



BOP's are 10" Series 900 Type "E" Shaffer
 Double Hydraulic 6000 psi test, 3000 psi
 working pressure. All additional valves
 & connections are the same test & working
 pressures.

EXHIBIT "E"
 MANZANO OIL CORPORATION
 Wiser Federal, Well No. 1
 BOP Specifications

APPLICATION FOR DRILLING
MANZANO OIL CORPORATION
Wiser Federal, Well No. 1
660' FSL & 1650' FWL, Sec. 25-T19S-R25E
Eddy County, New Mexico
Lease No.: NM-27787
(Exploratory Well)

In conjunction with Form 9-331C, Application for Permit to Drill subject well, Manzano Oil Corporation submits the following items of pertinent information in accordance with BLM requirements:

1. The geologic surface formation is recent Permian with Quaternary alluvium and other surficial deposits.
2. The estimated tops of geologic markers are as follows:

San Andres	1110'
Glorieta	2400'
Yeso	2554'
T.D.	3120'
3. The estimated depths at which water, oil or gas formations are anticipated to be encountered:

Water: Fresh water from 100 to 300 feet.

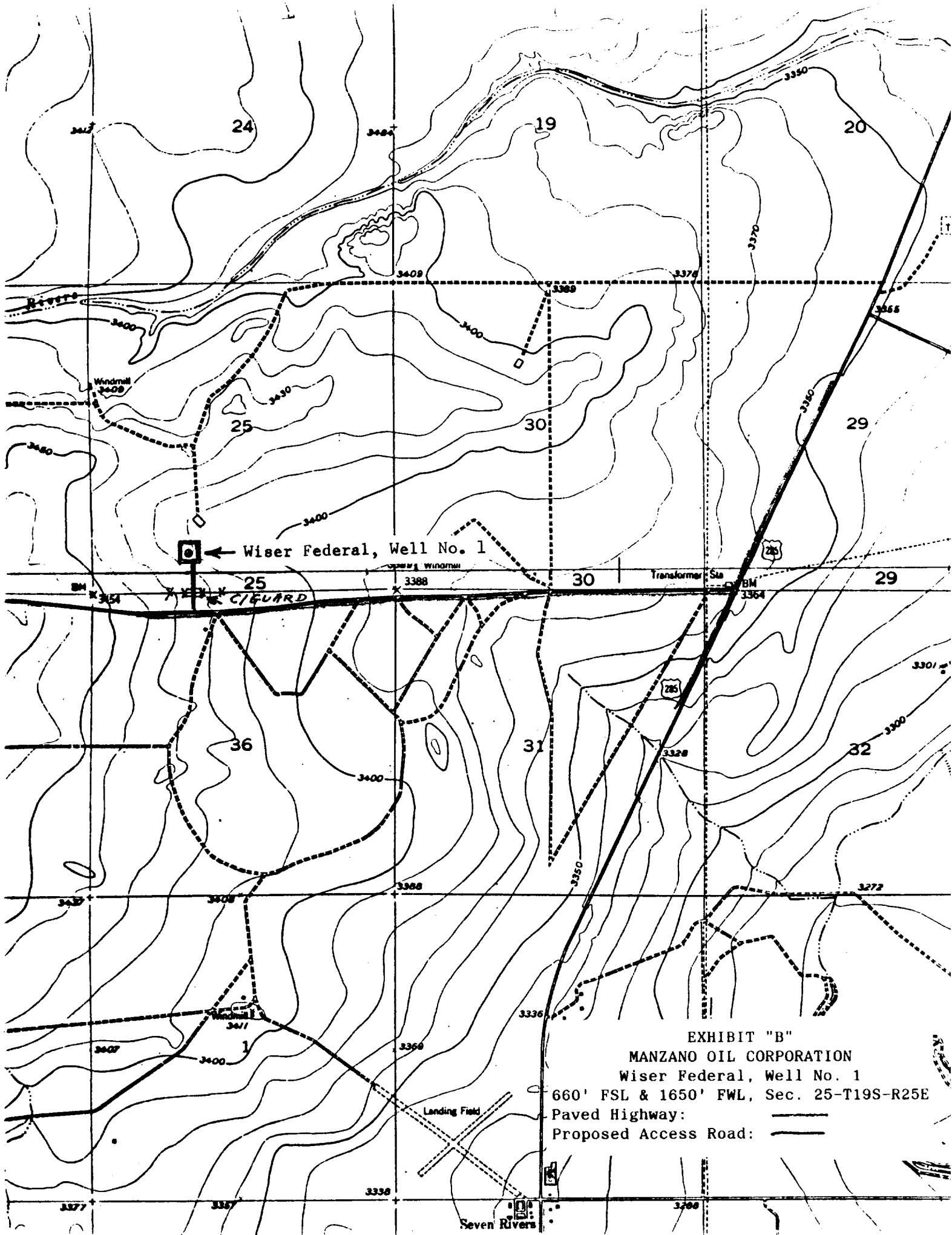
Gas: None expected, possible casinghead gas in Yeso.

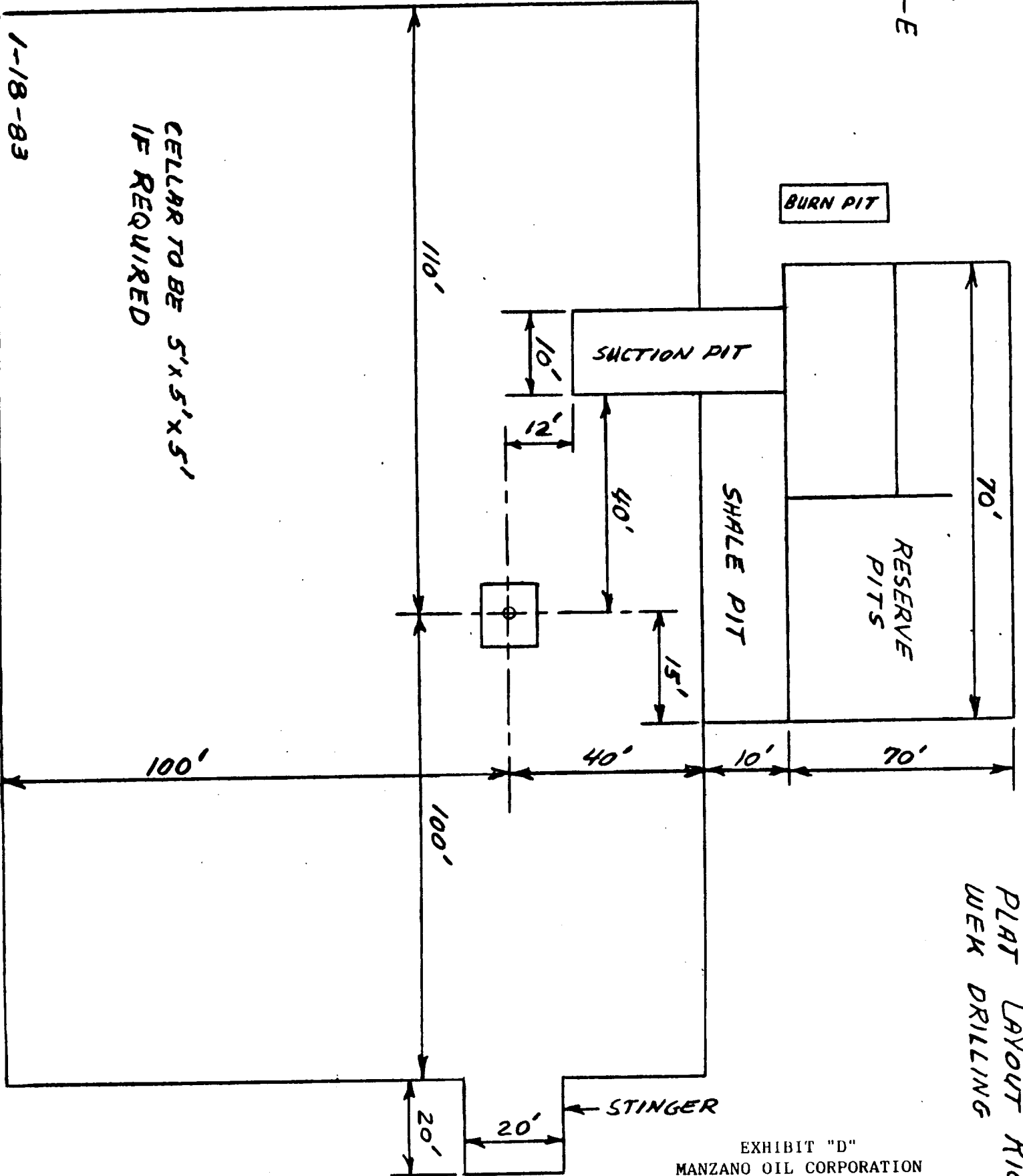
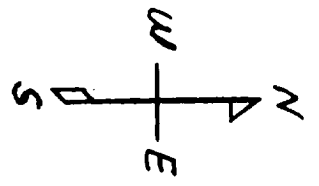
Oil: Remote chance for possible show in San Andres.
Possible in Yeso from 2554' to 3120.
4. Proposed Casing Program: See Form 9-331C.
5. Proposed Control Equipment: See form 9-331C and Exhibit "E".
6. Mud Program: See Form 9-331C.
7. Auxiliary Equipment: Blowout preventer, gas detector, kelly cock, pit level monitor, flow sensors and stabbing valve.
8. Testing, Logging and Coring Program:

Drill Stem Tests: None planned.

Logging: Run Gamma Ray log over cores before analysis.

Coring: Will core Yeso from approximately 2515' to 3120'.
9. No abnormal pressures or temperatures are anticipated. In the event abnormal pressures are encountered the proposed mud program will be modified to increase the mud weight.
10. Anticipated starting date: April 15, 1986.
Anticipated completion of drilling operations: Approximately 2 to 3 weeks.





CELLAR TO BE 5'X5'X5'
IF REQUIRED

1-18-83

PLAT LAYOUT RIG 1
WEEK DRILLING

EXHIBIT "D"
MANZANO OIL CORPORATION
Wiser Federal, Well No. 1
Rig Layout