

UNITED STATES
DEPARTMENT OF THE INTERIOR
BUREAU OF LAND MANAGEMENT

APPLICATION FOR PERMIT TO DRILL OR DEEPEN

1a. TYPE OF WORK

RE-ENTER ☒ DRILL ☒ DEEPEN ☐

b. TYPE OF WELL

OIL WELL ☐

GAS WELL ☐

OTHER SWD

SINGLE ZONE ☒

MULTIPLE ZONE ☐

2. NAME OF OPERATOR

Sonat Exploration Company - Midland

3. ADDRESS AND TELEPHONE NO.

110 W. Louisiana, Su. 500, Midland, TX 79701

4. LOCATION OF WELL (Report location clearly and in accordance with any State requirements.)*
At surface

660' FSL & 660' FEL, Section 11
At proposed prod. zone
same

14. DISTANCE IN MILES AND DIRECTION FROM NEAREST TOWN OR POST OFFICE*

20 miles east of Loving, New Mexico

15. DISTANCE FROM PROPOSED*

LOCATION TO NEAREST PROPERTY OR LEASE LINE, FT.
(Also to nearest drlg. unit line, if any) 660'

16. NO. OF ACRES IN LEASE

1280

17. NO. OF ACRES ASSIGNED TO THIS WELL

0

18. DISTANCE FROM PROPOSED LOCATION* TO NEAREST WELL, DRILLING, COMPLETED, OR APPLIED FOR, ON THIS LEASE, FT.

7108'

19. PROPOSED DEPTH

6794'

20. ROTARY OR CABLE TOOLS

Rotary

21. ELEVATIONS (Show whether DF, RT, GR, etc.)

3552' GL

22. APPROX. DATE WORK WILL START*

12/01/96

23. PROPOSED CASING AND CEMENTING PROGRAM

SIZE OF HOLE	GRADE, SIZE OF CASING	WEIGHT PER FOOT	SETTING DEPTH	QUANTITY OF CEMENT
12-1/4"	8-5/8" J55	24#	410' Existing	Circ Cmt By Bran Oil Corp
7-7/8"	5-1/2" J55	15.50#	4500'	Circ Cmt
7-7/8" Open Hole			4500' - 6794'	

The operator proposes to re-enter the subject well, and convert the well to a salt water disposal well in the Delaware formation. Specific programs are outlined in the following attachments:

Drilling Program

Surface Use and Operating Plan

Exhibit A - Road Map

Exhibit B - Existing Well Map

Exhibit C - Location and Acreage Dedication Plat

Exhibit C-1 - Topo Map

Exhibit D - Drilling and Rig Layout

Exhibit E - BOP Equipment

Formen; Bran Res.

Bran-Bett's Fed.

P&A 4-27-97

APPROVAL SUBJECT TO
GENERAL REQUIREMENTS AND
SPECIAL STIPULATIONS
ATTACHED

IN ABOVE SPACE DESCRIBE PROPOSED PROGRAM: If proposal is to deepen, give data on present productive zone and proposed new productive zone. If proposal is to drill or deepen directionally, give pertinent data on subsurface locations and measured and true vertical depths. Give blowout preventer program, if any.

24.

Sr. Drilling and

Production Engineer

DATE 10/03/96

SIGNED K. Glenn Carter

(This space for Federal or State office use)

PERMIT NO. _____

APPROVAL DATE _____

Application approval does not warrant or certify that the applicant holds legal or equitable title to those rights in the subject lease which would entitle the applicant to conduct operations thereon.
CONDITIONS OF APPROVAL, IF ANY:

APPROVED BY B/F Splendorin

TITLE Acting State Director

DATE 8-25-97

*See Instructions On Reverse Side

NEW MEXICO OIL CONSERVATION COMMISSION
WELL LOCATION AND ACREAGE DEDICATION PLAT

Form C-102
Supersedes C-128
Effective 1-1-65

All distances must be from the outer boundaries of the Section.

Operator BRAN OIL CORPORATION		Lease Bran-Bettis Federal		Well No. 1
Plat Letter P	Section 11	Township 24 South	Range 31 East	County Eddy
Location of Well: 660 feet from the East line and 660 feet from the South line				
Ground Level Elev. 3552.	Producing Formation Delaware	Pool Wildcat Und. Cotton Draw	Dedicated Acreage: 40 Acres	

1. Outline the acreage dedicated to the subject well by colored pencil or hatchure marks on the plat below.
2. If more than one lease is dedicated to the well, outline each and identify the ownership thereof (both as to working interest and royalty).
3. If more than one lease of different ownership is dedicated to the well, have the interests of all owners been consolidated by communitization, unitization, force-pooling, etc?

RECEIVED BY

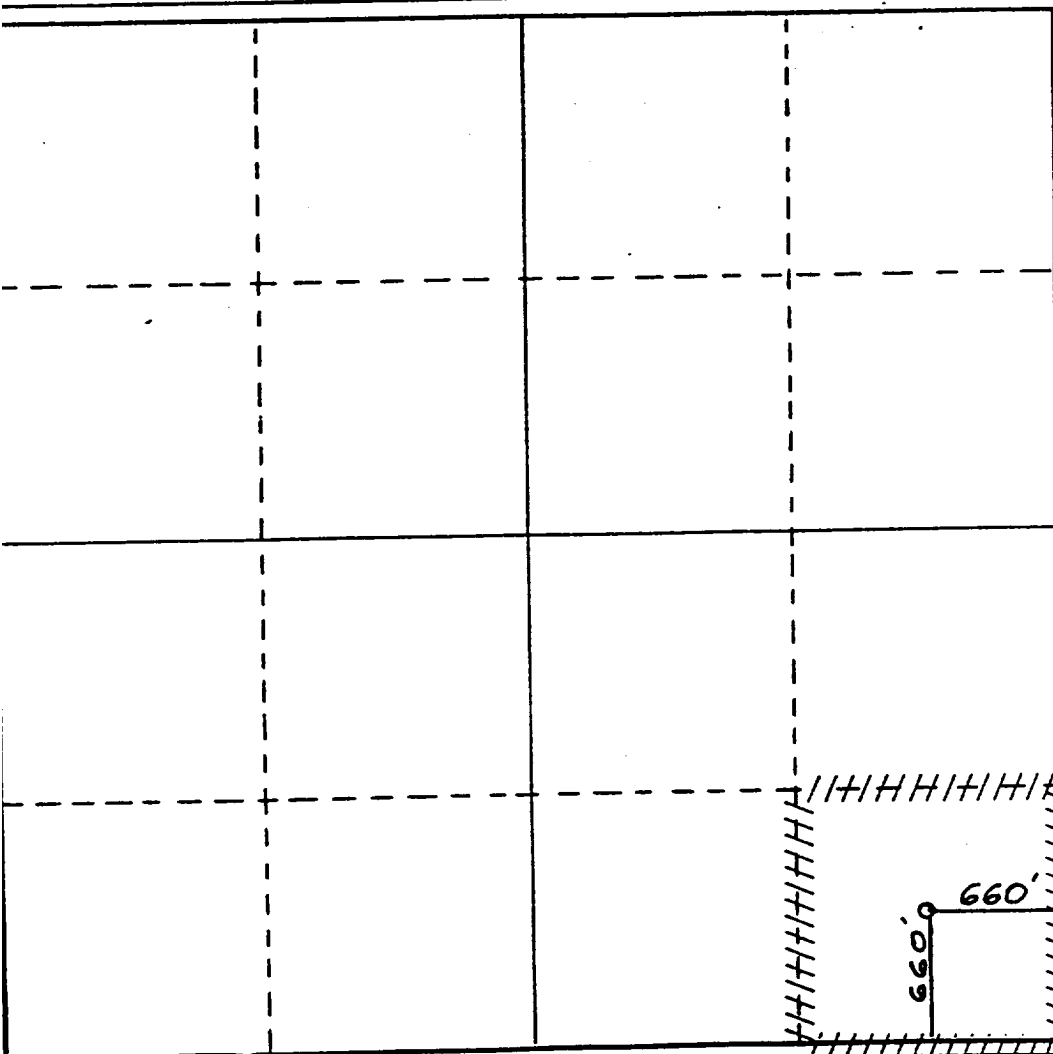
DEC -5 1986

ARTESIA, OFFICE

☐ Yes ☐ No If answer is "yes," type of consolidation _____

If answer is "no," list the owners and tract descriptions which have actually been consolidated. (Use reverse side of this form if necessary.) _____

No allowable will be assigned to the well until all interests have been consolidated (by communitization, unitization, forced-pooling, or otherwise) or until a non-standard unit, eliminating such interests, has been approved by the Commission.



CERTIFICATION

I hereby certify that the information contained herein is true and complete to the best of my knowledge and belief.

Terry W. Franklin

Name

Terry W. Franklin

Position

Agent

Company

Bran Oil Corporation

Date

November 11, 1986

I hereby certify that the well location shown on this plat was plotted from field notes of actual surveys made by me or under my supervision, and that the same are correct and true to the best of my knowledge and belief.

Date Surveyed

November 5, 1986

Registered Professional Engineer and/or Land Surveyor

Dan R. Reddy

Certificate No.

NM PE&LS NO. 5412

Operator - Sonat Exploration Company - Midland

Bran SWD No. 1

Outline of Proposed Re-entry Procedure

1. Blade location. Repair road if necessary. Dig and line a small reserve pit.
2. MIRU pulling unit and reverse unit. Weld on wellhead to 8-5/8" casing stub. NU/test BOP's.
3. Drill out cement plugs to 4500' (see attached current wellbore diagram for cement plug depths).
4. Run fluid caliper to determine exact cement volumes.
5. Run 5-1/2" 15.50 J55 LTC production casing. Cement. Circulate cement to surface. WOC 24 hrs.
6. Test 5-1/2" casing to 3,000 psi. Drill out float shoe. Clean well out to TD (6794').
7. Acidize the open hole with 7-1/2% HCL.
8. Run Guiberson G-6 (IPC) production packer or equivalent on 2-7/8" 6.5# J55 8rd EUE production tubing (IPC or cement lined). Circulate packer fluid. Set packer within 50' of the casing shoe at 4500'. NU wellhead. RD pulling unit.
9. Run mechanical integrity test with BLM and/or NMOCD witnesses present.
10. Place well in service as a salt water disposal well.

KGC

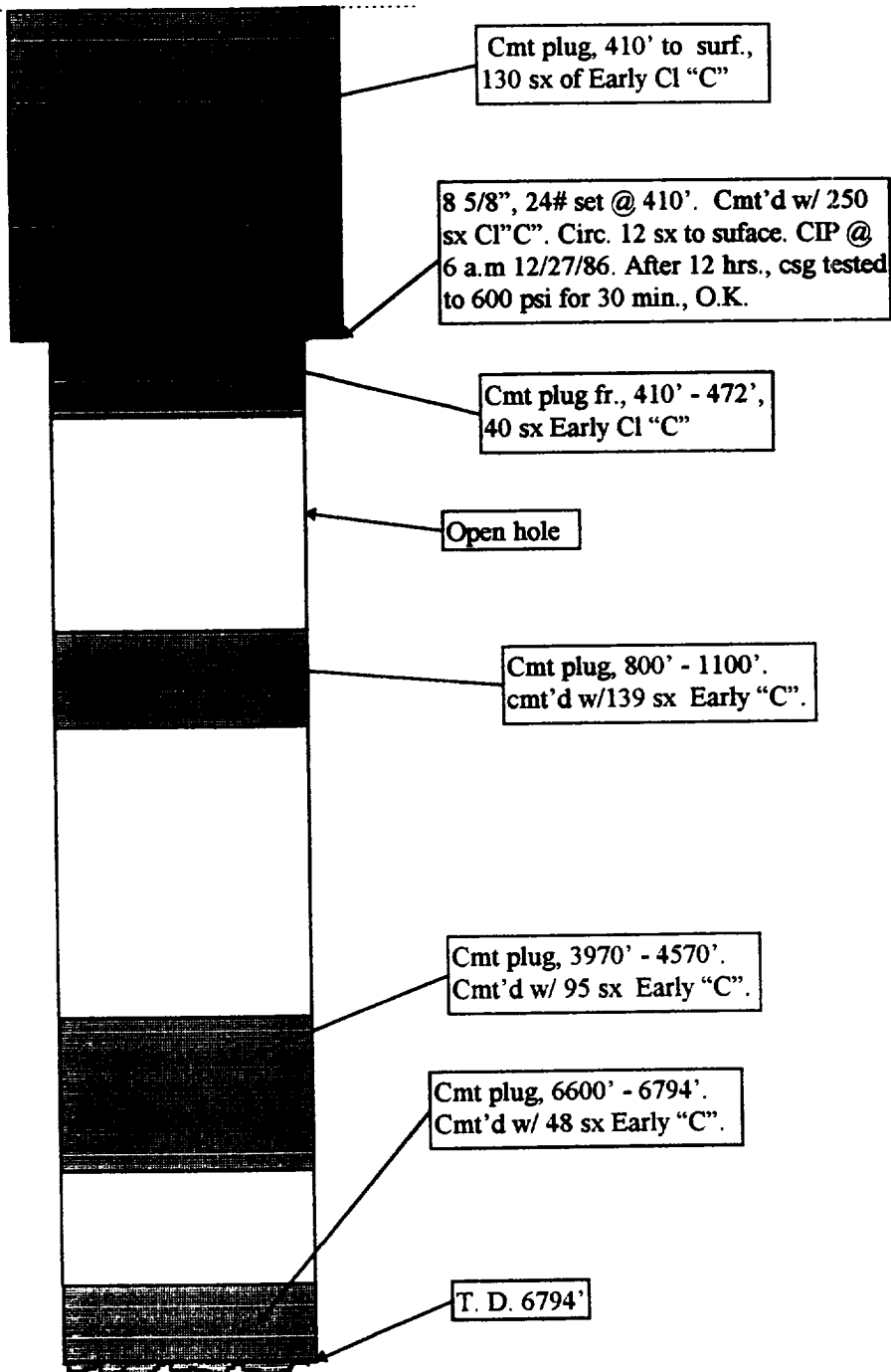
10/03/96

Present

BRAN-BETTIS FEDERAL #1
OPERATOR - BRAN OIL CORPORATION
660' FSL & 660' FEL, Section 11
T24S - R31E, NMPH
Eddy County, New Mexico

Spud - 12/26/86
P&A'D 1/9/87

Ground Level - 3552'



PROPOSED

To Re-enter & Complete As A SWD Well In The Delaware

Brad SWD Well No. 1

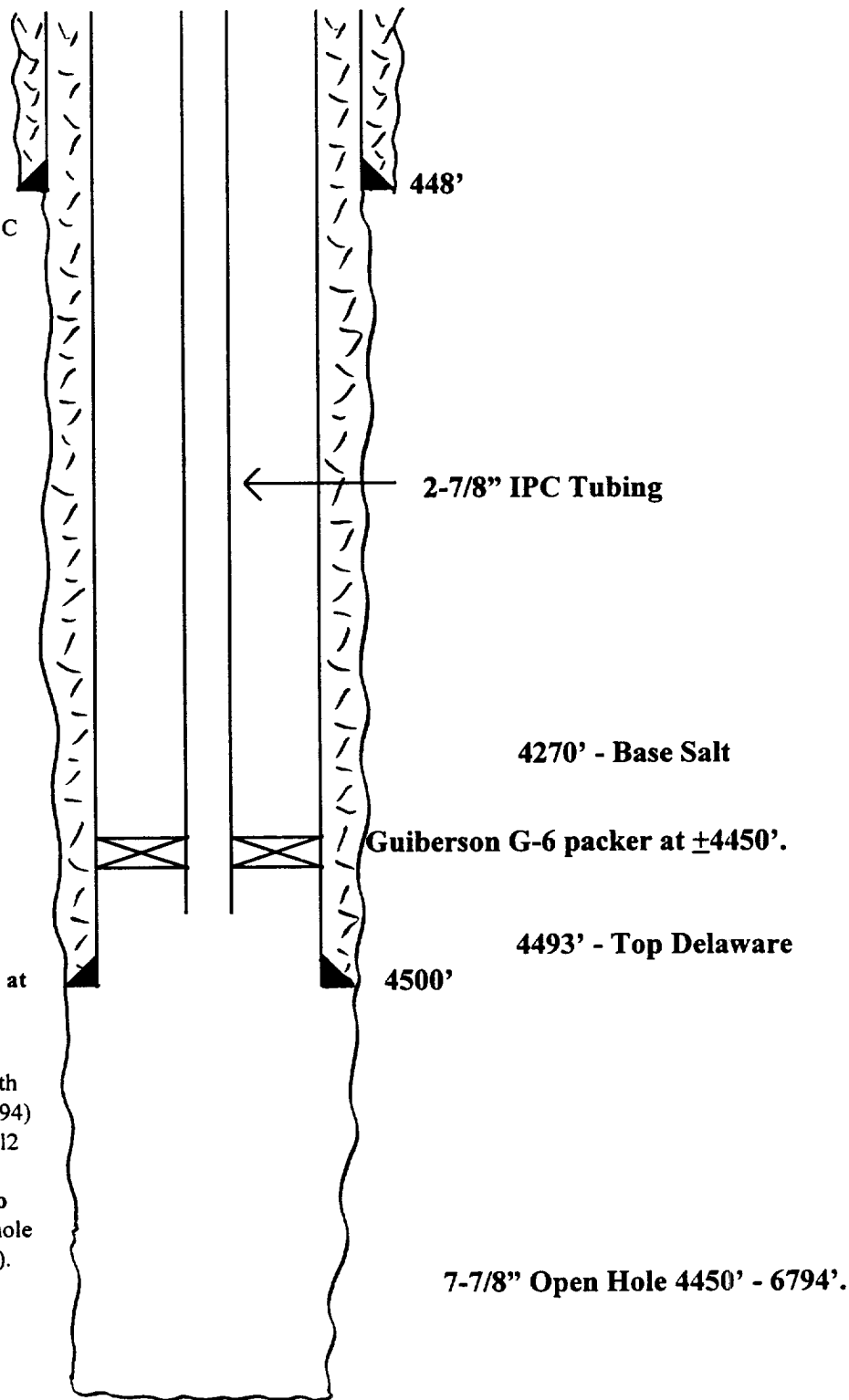
660' FSL & 660' FEL,

Section 11, Unit Letter P, T24S, R31E,

Eddy County, New Mexico

Elevation 3552' GL

8-5/8" 24# J55 STC
Surface Casing set at 410'
in 12-1/4" hole with 250 sx Class C
with 2% CaCl₂.
Circ 12 sx cmt to pit.

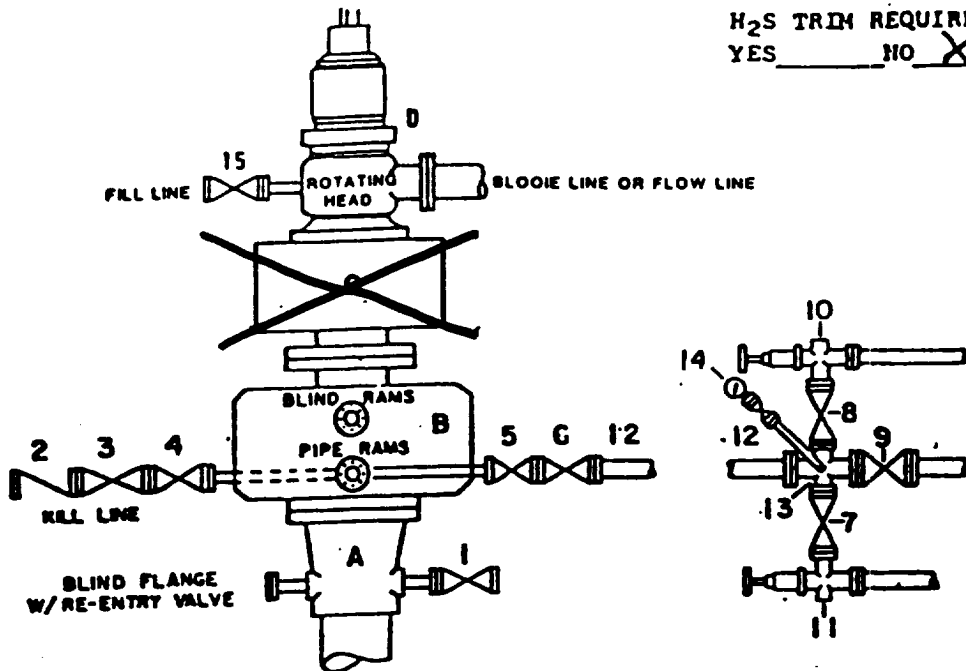


Proposed Production Casing:
5-1/2" 15.50 J55 STC casing set at
~~4450'~~ in 7-7/8" hole.

Proposed Cement Program:
Lead - 1560 sx 35/65 Poz "C" with
6% gel, 5# salt, 1/4# FC (12.8, 1.94)
Tail - 500 sx Class H w/ 2% CaCl₂
(15.6 ppg, 1.19 ft³/sx)
Calculated to circulate 300 sx to
pit. (30% excess over open hole
caliper plus 300 sx to circ 300 sx).

DRILLING CONTROL **CONDITION III-B 3000 PSI WP**

H₂S TRIM REQUIRED
 YES _____ NO X



DRILLING CONTROL

MATERIAL LIST - CONDITION III - B

- | | |
|----------------|---|
| A | Wellhead |
| B | 3000# W.P. Dual ram type preventer, hydraulic operated with 1" steel, 3000# W.P. control lines (where sub-structure height is adequate, 2 - 3000# W.P. single ram preventers may be utilized with 3000# W.P. drilling spool with 2" minimum flanged outlet for kill line and 3" minimum flanged outlet for choke line. The drilling spool is to be installed below the single ram type preventers). |
| C | 3000# W.P. Annular Preventer with 1" steel, 3000# W.P. control lines. |
| D | Rotating Head with fill up outlet and extended Bore line. |
| 1,3,4,
7,8, | 2" minimum 3000# W.P. flanged full opening steel gate valve, or Halliburton Lo Torc Plug valve. |
| 2 | 2" minimum 3000# W.P. back pressure valve. |
| 5,6,9 | 3" minimum 3000# W.P. flanged full opening steel gate valve, or Halliburton Lo Torc Plug valve. |
| 12 | 3" minimum Schedule 80, Grade B, seamless line pipe. |
| 13 | 2" minimum x 3" minimum 3000# W.P. flanged cross. |
| 10,11 | 2" minimum 3000# W.P. adjustable choke bodies. |
| 14 | Cameron Mud Gauge or equivalent (location optional in Choke line). |
| 15 | 2" minimum 3000# W.P. flanged or threaded full opening steel gate valve, or Halliburton Lo Torc Plug valve. |

SCALE	DATE	EST NO	DWG NO
DRAWN BY			
CHECKED BY			
APPROVED BY			

EXHIBIT E