

UNITED STATES
DEPARTMENT OF THE INTERIOR
BUREAU OF LAND MANAGEMENT

APPLICATION FOR PERMIT TO DRILL, DEEPEN, OR PLUG BACK

1a. TYPE OF WORK

DRILL ☒

DEEPEN ☐

PLUG BACK ☐

b. TYPE OF WELL

OIL
WELL ☒

GAS
WELL ☐

OTHER ☐

SINGLE
ZONE ☐

MULTIPLE
ZONE ☐

2. NAME OF OPERATOR

Yates Petroleum Corporation

3. ADDRESS OF OPERATOR

105 South Fourth Street - Artesia, NM 88210

4. LOCATION OF WELL (Report location clearly and in accordance with any State requirements.)

At surface

990' FNL & 660' FWL

At proposed prod. zone

Same

14. DISTANCE IN MILES AND DIRECTION FROM NEAREST TOWN OR POST OFFICE*

Approximately 31 miles southwest of Artesia, New Mexico

15. DISTANCE FROM PROPOSED*

LOCATION TO NEAREST
PROPERTY OR LEASE LINE, FT.
(Also to nearest drlg. unit line, if any)

660'

18. DISTANCE FROM PROPOSED LOCATION*

TO NEAREST WELL, DRILLING, COMPLETED,
OR APPLIED FOR, ON THIS LEASE, FT.

16. NO. OF ACRES IN LEASE

19. PROPOSED DEPTH

3600'

17. NO. OF ACRES ASSIGNED
TO THIS WELL

40

20. ROTARY OR CABLE TOOLS

Rotary

21. ELEVATIONS (Show whether DF, RT, GR, etc.)

3798' GR

22. APPROX. DATE WORK WILL START*

ASAP

23.

PROPOSED CASING AND CEMENTING PROGRAM

SIZE OF HOLE	SIZE OF CASING	WEIGHT PER FOOT	SETTING DEPTH	QUANTITY OF CEMENT
17-1/2"	13-3/8"	54.5# J-55	Approx. 350'	Circulate
12-1/4"	8-5/8"	24# J-55	" 1600'	Circulate
7-7/8"	5-1/2"	15.5# J-55	TD	300 sacks

We propose to drill and test the Yeso and intermediate formations. Approximately 350' of surface casing will be set to shut off gravel and cavings. Intermediate casing will be run to approximately 1600' with cement circulated. If commercial, 5-1/2" production casing will be run with adequate cement cover, perforated and stimulated as needed for production.

MUD PROGRAM: Spud mud to 350', fresh water from 350' to TD

BOP PROGRAM: BOP's to be installed on 8-5/8" casing and tested daily for operational.

Posted ID-1
NL, API
1-9-87

IN ABOVE SPACE DESCRIBE PROPOSED PROGRAM: If proposal is to deepen or plug back, give data on present productive zone and proposed new productive zone. If proposal is to drill or deepen directionally, give pertinent data on subsurface locations and measured and true vertical depths. Give blowout preventer program, if any.

24.

SIGNED

TITLE

Landman

DATE

Dec. 23, 1986

(This space for Federal or State office use)

PERMIT NO.

APPROVAL DATE

APPROVED BY

TITLE

DATE

12/23/86

CONDITIONS OF APPROVAL, IF ANY:

APPROVAL SUBJECT TO
GENERAL REQUIREMENTS AND
SPECIAL STIPULATIONS

*See Instructions On Reverse Side

**N. MEXICO OIL CONSERVATION COMMISSION
WELL LOCATION AND ACREAGE DEDICATION PLAT**

Form C-102
Supersedes C-128
Effective 1-1-65

All distances must be from the outer boundaries of the Section.

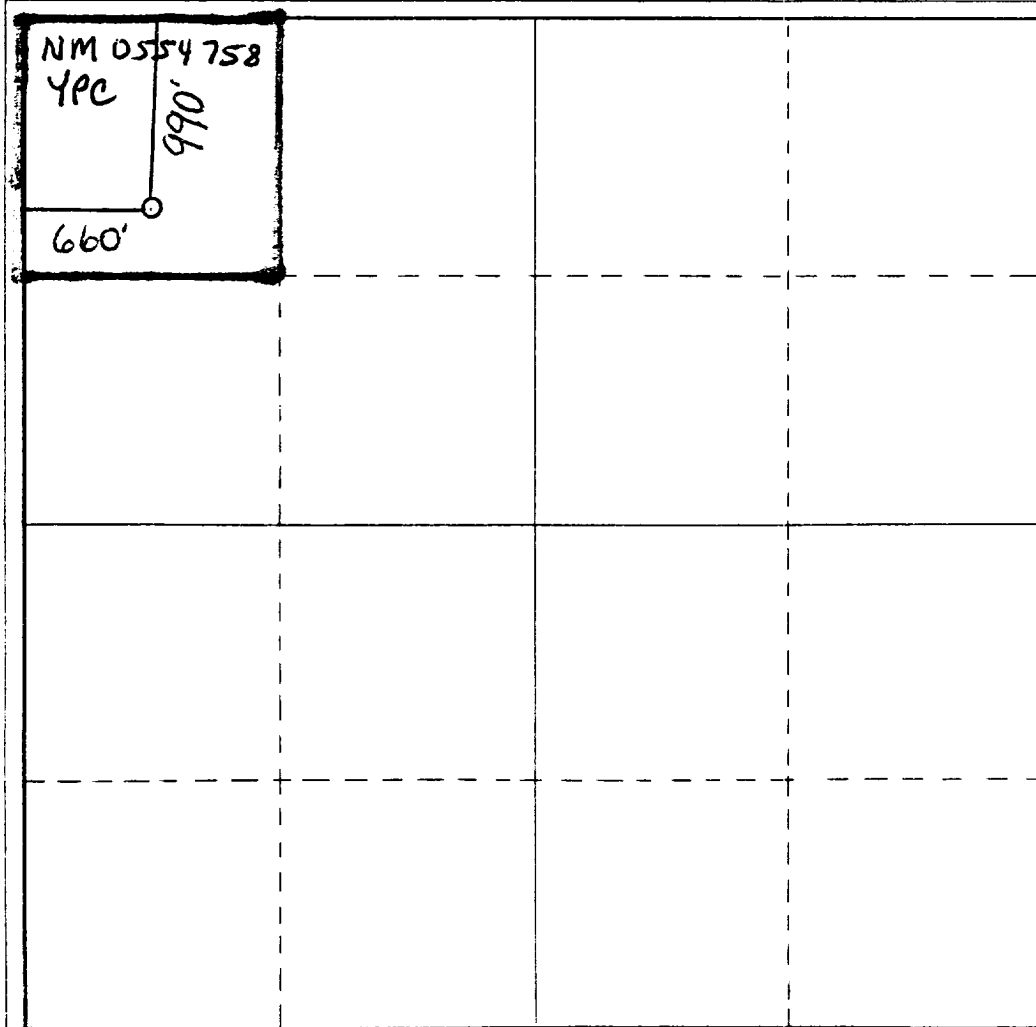
Operator YATES PETROLEUM CORPORATION			Lease AMBRA AEK FEDERAL		Well No. 2
Unit Letter D	Section 12	Township 21S	Range 24E	County EDDY	
Actual Footage Location of Well: 990 feet from the North line and 660 feet from the West line					
Ground Level Elev. 3798'	Producing Formation YESO		Pool wildcat	Dedicated Acreage: .40 Acres	

1. Outline the acreage dedicated to the subject well by colored pencil or hatchure marks on the plat below.
2. If more than one lease is dedicated to the well, outline each and identify the ownership thereof (both as to working interest and royalty).
3. If more than one lease of different ownership is dedicated to the well, have the interests of all owners been consolidated by communitization, unitization, force-pooling, etc?

☐ Yes ☒ No If answer is "yes," type of consolidation _____

If answer is "no," list the owners and tract descriptions which have actually been consolidated. (Use reverse side of this form if necessary.) _____

No allowable will be assigned to the well until all interests have been consolidated (by communitization, unitization, forced-pooling, or otherwise) or until a non-standard unit, eliminating such interests, has been approved by the Commission.



CERTIFICATION

I hereby certify that the information contained herein is true and complete to the best of my knowledge and belief.

Ken Beardemphl
Name

Ken Beardemphl
Position

Landman
Company

Yates Petroleum Corporation
Date

December 23, 1986



Date Surveyed
12-19-86

Registered Professional Engineer
and/or Land Surveyor

Dan R. Reddy
Certificate No.

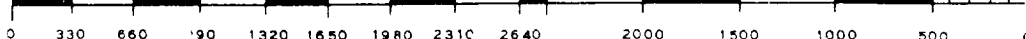
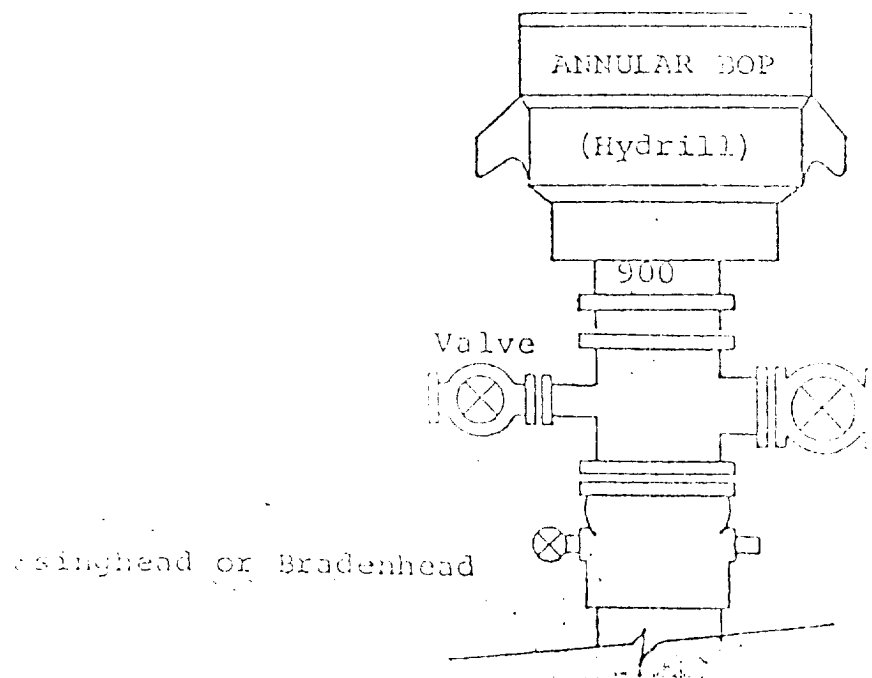


EXHIBIT B

BOP DIAGRAM

RATED 3000[#]



YATES PETROLEUM CORPORATION
Ambra AEK Federal #2
990' FNL and 660' FWL of
Section 12-T21S-R24E
Eddy County, New Mexico

In conjunction with Form 9-331C, Application for Permit to Drill subject well, Yates Petroleum Corporation submits the following ten items of pertinent information in accordance with BLM requirements.

1. The geological surface formation is quaternary alluvium with sparse vegetation.
2. The estimated tops of geologic markers are as follows:

San Andres	1200'
Glorieta	2870'
TD	3600'
3. The estimated depths at which anticipated water, oil or gas formations are expected to be encountered:

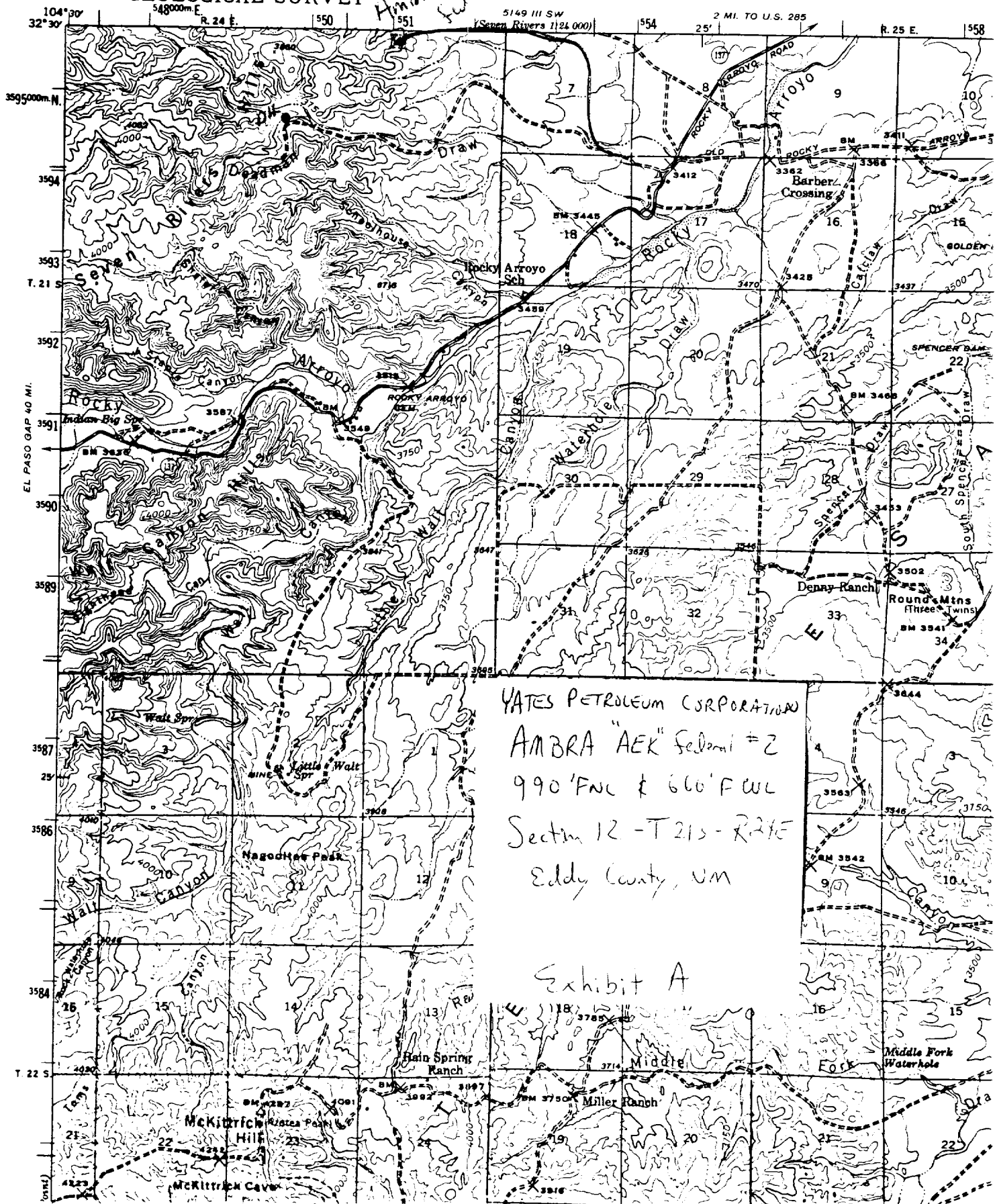
Water: Approximately 250'.
Oil or Gas: Oil - From 1600' to TD.
4. Proposed Casing Program: See Form 9-331C.
5. Pressure Control Equipment: See Form 9-331C.
6. Mud Program: See Form 9-331C.
7. Auxiliary Equipment: Nothing different than what is usually required.
8. Testing, Logging and Coring Program:

Testing:	None
Logging:	Gamma Ray Neutron
Samples:	10' out from under intermediate casing
Coring:	None
9. No abnormal pressures or temperatures are anticipated.
10. Anticipated starting date: As soon as possible after approval.

5049 11 SE
(Foster Ranch
1:24,000)

UNITED STATES
DEPARTMENT OF THE INTERIOR
GEOLOGICAL SURVEY

Ambra "AEK" Sec 12



YATES PETROLEUM CORPORATION
AMBRA "AEK" Sec 12
990' FWC & 660' FWC
Sectm 12 - T 21 S - R 24 E
Eddy County, NM

Exhibit A

YATES PETROLEUM CORPORATION

EXHIBIT C

