

UNITED STATES
DEPARTMENT OF THE INTERIOR
BUREAU OF LAND MANAGEMENT

APPLICATION FOR PERMIT TO DRILL, DEEPEN, OR PLUG BACK

1a. TYPE OF WORK

DRILL ☒

DEEPEN ☐

PLUG BACK ☐

b. TYPE OF WELL

OIL
WELL ☒

GAS
WELL ☐

OTHER

SINGLE
ZONE ☒

MULTIPLE
ZONE ☐

2. NAME OF OPERATOR

The Petroleum Corporation of Delaware

3. ADDRESS OF OPERATOR

3811 Turtle Creek Blvd., Suite 350., Dallas, TX 75219

4. LOCATION OF WELL (Report location clearly and in accordance with any State requirements)

At surface

760' FEL & 1980' FSL
At proposed prod. zone

Unit Letter I

NE 1/4 of SE

RECEIVED BY

MAR 16 1987

14. DISTANCE IN MILES AND DIRECTION FROM NEAREST TOWN OR POST OFFICE*

30 Air Miles So-So East of Carlsbad, N.M. O.C.D.

15. DISTANCE FROM PROPOSED*

LOCATION TO NEAREST
PROPERTY OR LEASE LINE, FT.
(Also to nearest drig. unit line, if any)

760

16. NO. OF ACRES ASSIGNED

200

18. DISTANCE FROM PROPOSED LOCATION*

TO NEAREST WELL, DRILLING, COMPLETED,
OR APPLIED FOR, ON THIS LEASE, FT.

only well
on lease

19. PROPOSED DEPTH

3500

20. ROTARY OR CABLE TOOLS

Rotary

21. ELEVATIONS (Show whether DF, RT, GR, etc.)

2961.5' GR 2965.1

22. APPROX. DATE WORK WILL START*

As soon as rig is
available

23. PROPOSED CASING AND CEMENTING PROGRAM

SIZE OF HOLE	SIZE OF CASING	WEIGHT PER FOOT	SETTING DEPTH	QUANTITY OF CEMENT
12 1/4	8 5/8	24#	720	Sufficient to Circ to Surf
7 7/8	5 1/2	15.5#	3500	125 SX Cement across Bell Canyon up into Salt Section

Pay Zone will be Selectively Perforated & Stimulated as Needed.

- Attached are:
1. Well Location & Acreage Dedication Plot
 2. Supplemental Drilling Plan.
 3. Surface Use Plan.
 4. Thirteen Point Program.

IN ABOVE SPACE DESCRIBE PROPOSED PROGRAM: If proposal is to deepen or plug back, give data on present productive zone and proposed new productive zone. If proposal is to drill or deepen directionally, give pertinent data on subsurface locations and measured and true vertical depths. Give blowout preventer program, if any.

24.

SIGNED

Ralph P. Watkins

TITLE District Engineer

DATE 2/25/87

(This space for Federal or State office use)

PERMIT NO.

010: 830: Charles S. Feltner

APPROVAL DATE

APPROVED BY

FROM BUREAU

TITLE

DATE

3-13-87

CONDITIONS OF APPROVAL, IF ANY:

*See Instructions On Reverse Side

Title 18 U.S.C. Section 1001, makes it a crime for any person knowingly and willfully to make to any department or agency of the United States any false, fictitious or fraudulent statements or representations as to any matter within its jurisdiction.

NEW MEXICO OIL CONSERVATION COMMISSION
WELL LOCATION AND ACREAGE DEDICATION PLAT

Form C-102
Supersedes C-128
Effective 1-1-65

All distances must be from the outer boundaries of the Section

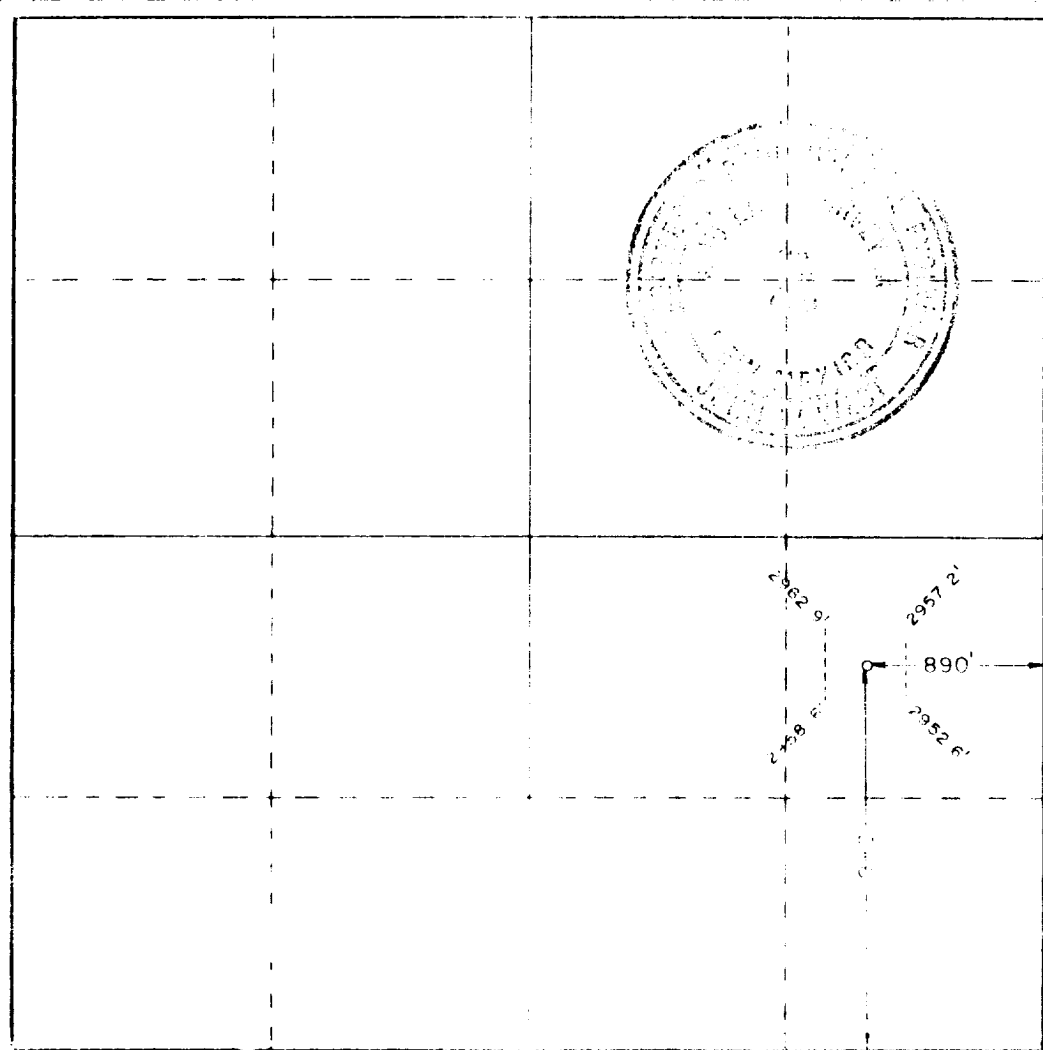
PETROLEUM CORPORATION OF DELAWARE ✓			Lease BRUSHY 11 FEDERAL		Well No. 1
Section 11	Tract 26	Range 29	East	Twp 7	

1980	feet from the	SOUTH	line and	890	feet from the	EAST	line
2965.1	Delaware		Brushy Draw Delaware		40		Acres

- Outline the acreage dedicated to the subject well by colored pencil or hatchure marks on the plat below.
- If more than one lease is dedicated to the well, outline each and identify the ownership thereof (both as to working interest and royalty)
- If more than one lease of different ownership is dedicated to the well, have the interests of all owners been consolidated by communitization, unitization, force-pooling, etc?

RECEIVED BY
MAR 16 1987
O. C. D.
ARTESIA, OFFICE

Yes No If answer is "yes" type of consolidation
If answer is "no" list the owners and tract descriptions which have actually been consolidated (Use reverse side of this form if necessary)
No allowable will be assigned to the well until all interests have been consolidated (by communitization, unitization, forced-pooling, or otherwise) or until a non-standard unit, eliminating such interests, has been approved by the Commission.



CERTIFICATION

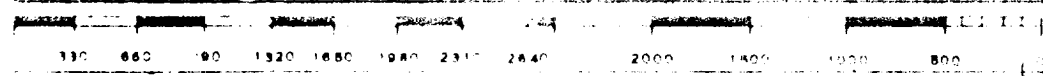
I hereby certify that the information contained herein is true and complete to the best of my knowledge and belief

Raph P. Watkins
District Engineer
Petroleum Corp. of Delaware
3/12/86

I hereby certify that the well location shown on this plat was plotted from field notes of actual surveys made by me or under my supervision and that the same is true and correct to the best of my knowledge and belief.

John V. White

Testified to by JOHN W. WEST, FTE
RONALD J. EIDSON, FTE



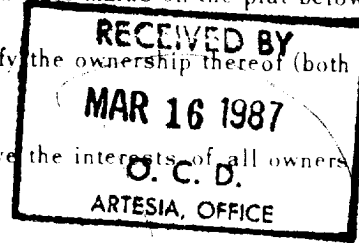
**1 MEXICO OIL CONSERVATION COMMISSION
WELL LOCATION AND ACREAGE DEDICATION PLAT**

Form C-102
Supersedes C-128
Effective 1-1-65

All distances must be from the outer boundaries of the Section

Operator The Petroleum Corporation of Delaware			Lease Brushy 11 Fed.		Well No. #1
Unit Letter 1	Section 11	Township 26 South	Range 29 East	County Delaware	
Actual Footage Location of Well: <div style="display: flex; justify-content: space-between;"> 1980 feet from the South line and 760 feet from the East line </div>					
Ground Level Elev. 2961.5	Producing Formation Delaware	Pool Brushy Draw Delaware		Dedicated Acreage: 40 Acres	

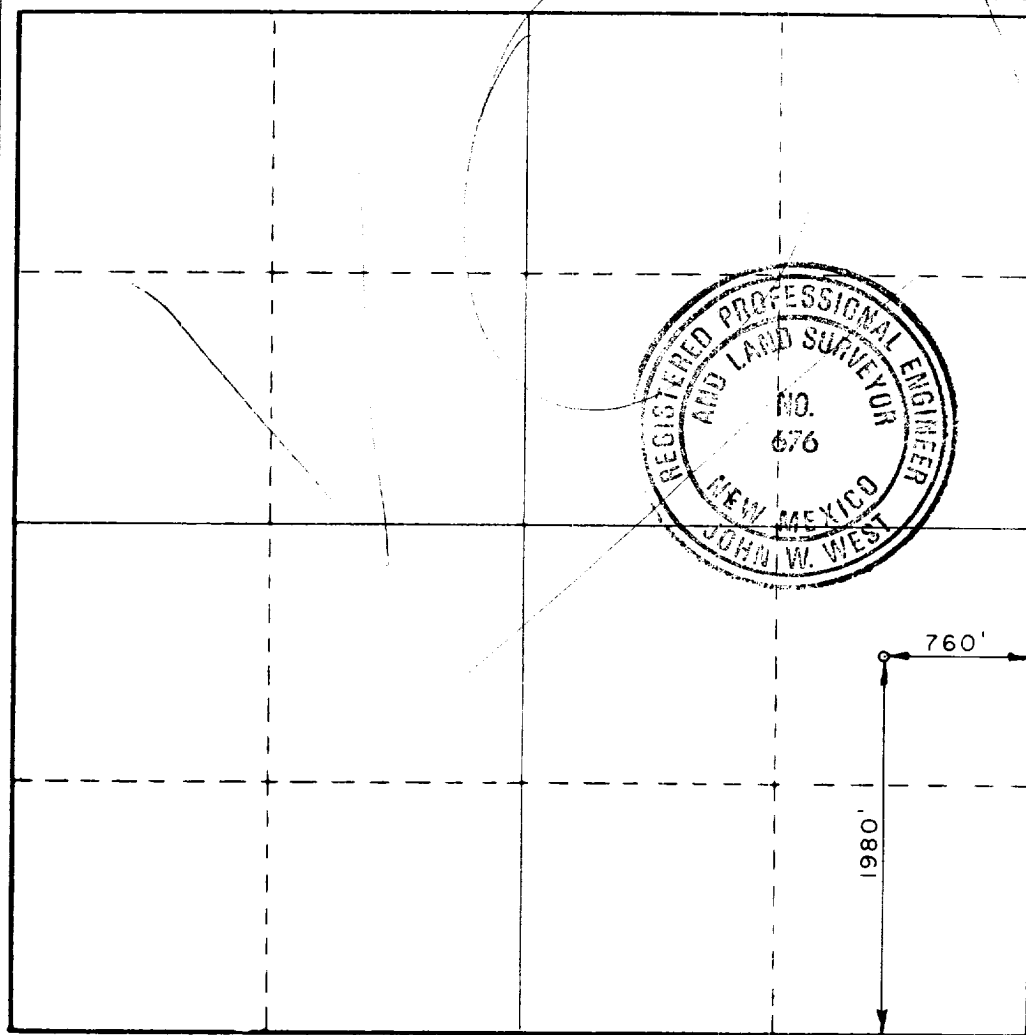
1. Outline the acreage dedicated to the subject well by colored pencil or hatchure marks on the plat below.
2. If more than one lease is dedicated to the well, outline each and identify the ownership thereof (both as to working interest and royalty).
3. If more than one lease of different ownership is dedicated to the well, have the interests of all owners been consolidated by communitization, unitization, force-pooling, etc?



☐ Yes ☐ No If answer is "yes," type of consolidation _____

If answer is "no," list the owners and tract descriptions which have actually been consolidated. (Use reverse side of this form if necessary.) _____

No allowable will be assigned to the well until all interests have been consolidated (by communitization, unitization, forced-pooling, or otherwise) or until a non-standard-unit, eliminating such interests, has been approved by the Commission.

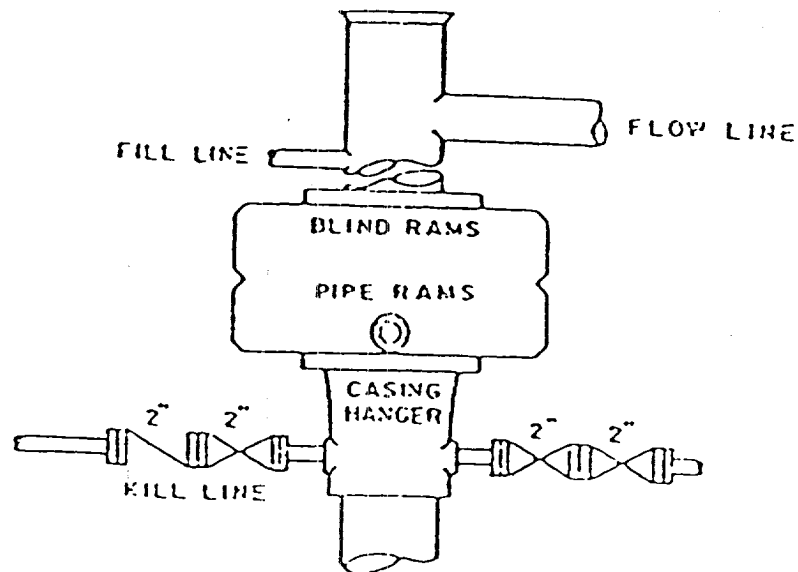


CERTIFICATION <i>Ralph P. Watkins</i> I hereby certify that the information contained herein is true and complete to the best of my knowledge and belief.	
Ralph P. Watkins District Engineer	
The Petroleum Corp. of Delaware February 25, 1987	
I hereby certify that the well location shown on this plat was plotted from field notes of actual surveys made by me or under my supervision, and that the same is true and correct to the best of my knowledge and belief.	
Date Surveyed February 12, 1987 Registered Professional Engineer and Land Surveyor <i>John W. West</i>	
Certificate No.	JOHN W. WEST, 676
	RONALD J. EIDSON, 3239

BLOWOUT PREVENTER ARRANGEMENT

THE PETROLEUM CORPORATION
OF DELAWARE

BRUSHY 11 FEDERAL #1
NE 1/4, SE 1/4, Sec. 11, T-26-S, R-29-E



900 Series

SUPPLEMENTAL DRILLING PLAN

THE PETROLEUM CORPORATION

OF DELAWARE

BRUSHY II FEDERAL #1

NE/4, SE/4, Sec. 11, T-26-S, R-29-E

1. SURFACE FORMATION: Unconsolidated Sands of Quaternary Age.

2. ESTIMATED TOPS OF GEOLOGIC MARKERS (G.L. Elevation 2962'):

Anhydrite	340'	Delaware Sand	3175'
Salado	460'		
Base Lower Salt	2940'		
Delaware Lime	3140'		

3. POSSIBLE HYDROCARBON BEARING ZONES:

Bell Canyon: Oil & Gas
Brushy Canyon: Oil

4. CASING DESIGN:

<u>Size</u>	<u>Interval</u>	<u>Weight</u>	<u>Grade</u>	<u>Joint</u>
8 5/8"	0 - 720'	24.0#	J-55	STC
5 1/2"	0 - 3500'	15.5#	J-55	STC

Cement across Bell Canyon up into salt section.

5. PRESSURE CONTROL EQUIPMENT: Two Ram-Type Preventors. A sketch of BOP arrangement is attached.

6. CIRCULATING MEDIUM:

0' - 700'	Fresh water with gel or lime as needed for viscosity.
700' - 3000'	Brine.
3001' - 3500'	Cut brine conditioned as necessary for control of viscosity and water loss.

7. AUXILIARY EQUIPMENT: Drill string safety valve.

8. TESTING, LOGGING AND CORING PROGRAMS: No coring or DST's are planned. Electric logs will include a compensated Neutron Log with Gamma Ray.

9. ABNORMAL PRESSURES, TEMPERATURES OF GAS: None anticipated.

10. ANTICIPATED STARTING DATE: It is planned that operations will commence as soon as possible. Duration of drilling, completion and testing operations should be two to six weeks.

Topographic Map

— Proposed Road
 — Existing Road

**THE PETROLEUM CORPORATION
 OF DELAWARE**

BRUSHY 11 FEDERAL #1
 NE 1/4, SE 1/4, Sec. 11, T-26-S, R-29-E

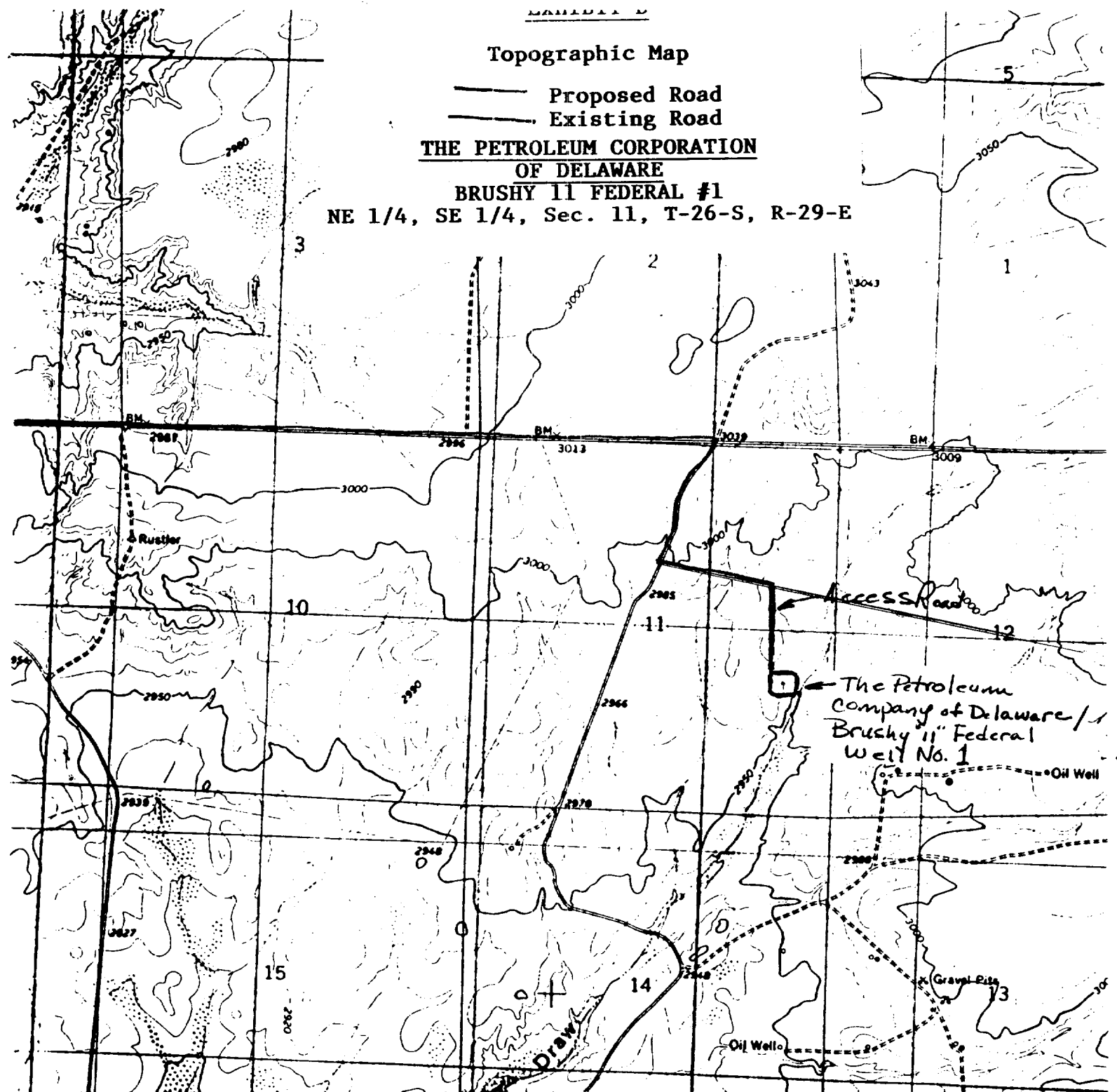


Fig. 1. USGS ROSS RANCH QUADRANGLE, 7.5 Minute Series, 1:24,000, 1968, showing THE PETROLEUM CORPORATION OF DELAWARE's proposed Brushy "11" Federal Well No. 1, 1980 FSL, 760 FEL, and access road, Section 11, T26S, R29E, NMPM, Eddy County, New Mexico.

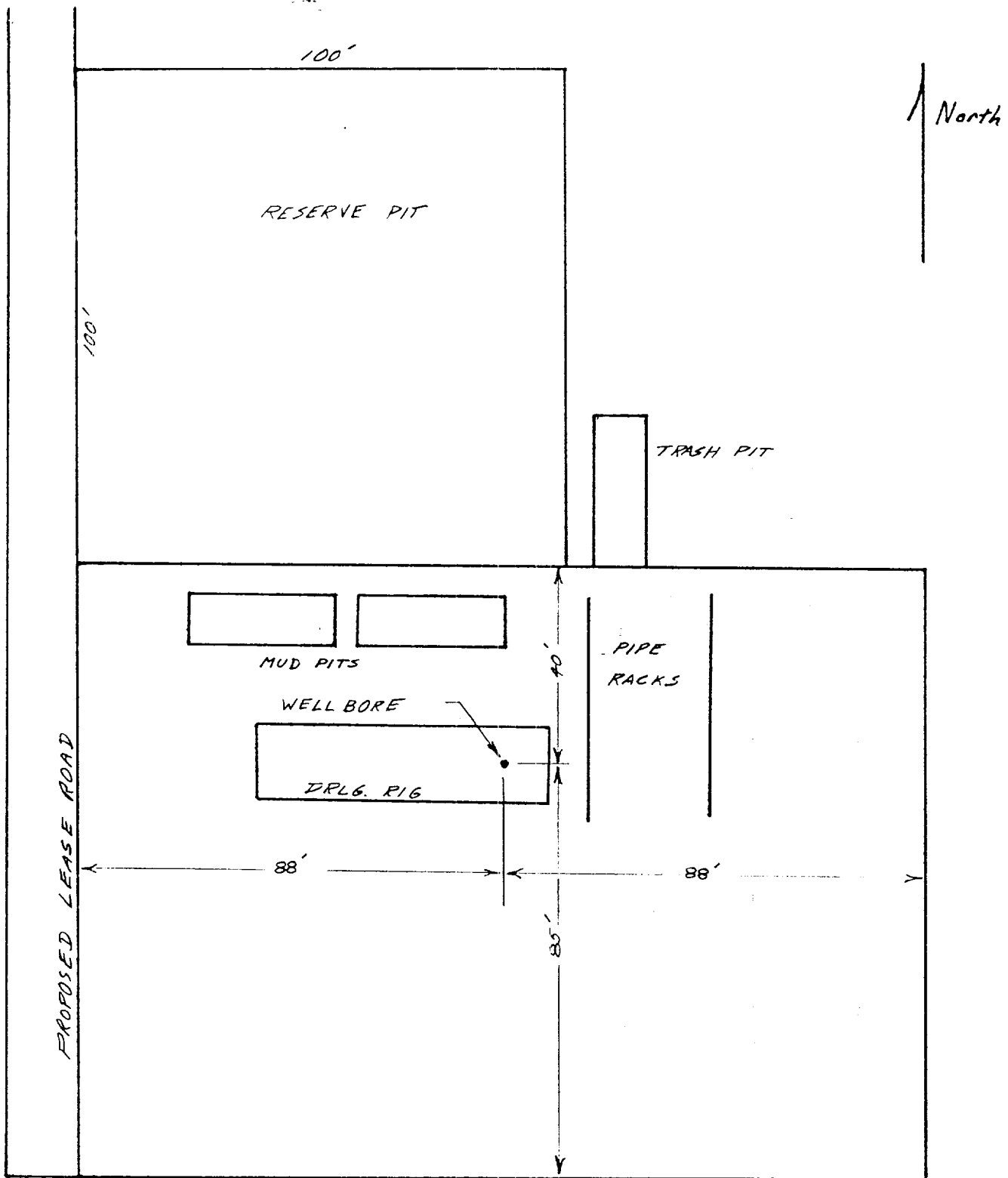


EXHIBIT D

Sketch of Well Pad

THE PETROLEUM CORPORATION
OF DELAWARE

BRUSHY 11 FEDERAL #1

NE 1/4, SE 1/4, Sec. 11, T-26-S, R-29-E