

UNITED STATES  
DEPARTMENT OF THE INTERIOR  
GEOLOGICAL SURVEY

SEP 08 '87

30-015-25802

5. LEASE DESIGNATION AND SERIAL NO.

LC-028731(b)

6. IF INDIAN, ALLOTTEE OR TRIBE NAME

7. UNIT AGREEMENT NAME

8. FARM OR LEASE NAME

M. Dodd "B"

9. WELL NO.

62

10. FIELD AND POOL, OR WILDCAT

Grbg Jackson SR Q Gb SA

11. SEC., T., R., M., OR BLK.  
AND SURVEY OR AREA

Sec. 10-T17S-R29E

12. COUNTY OR PARISH 13. STATE

Eddy

NM

APPLICATION FOR PERMIT TO DRILL, DEEPEN, OR PLUG BACK

1A. TYPE OF WORK

DRILL ☒

DEEPEN ☐

PLUG BACK ☐

b. TYPE OF WELL

OIL WELL ☒

GAS WELL ☐

OTHER

SINGLE ZONE ☒

MULTIPLE ZONE ☐

2. NAME OF OPERATOR

Marbob Energy Corporation

3. ADDRESS OF OPERATOR

P.O. Drawer 217, Artesia, NM 88210

4. LOCATION OF WELL (Report location clearly and in accordance with any State requirements.)\*

At surface

1345 FSL 500 FEL

At proposed prod. zone

same

14. DISTANCE IN MILES AND DIRECTION FROM NEAREST TOWN OR POST OFFICE\*

20 air miles east of Artesia, NM 88210

15. DISTANCE FROM PROPOSED\*

LOCATION TO NEAREST  
PROPERTY OR LEASE LINE, FT.  
(Also to nearest drlg. unit line, if any)

25'

16. NO. OF ACRES IN LEASE

1480

17. NO. OF ACRES ASSIGNED

TO THIS WELL

40

18. DISTANCE FROM PROPOSED LOCATION\*  
TO NEAREST WELL, DRILLING, COMPLETED,  
OR APPLIED FOR, ON THIS LEASE, FT.

640'

19. PROPOSED DEPTH

5000'

20. ROTARY OR CABLE TOOLS

Rotary

21. ELEVATIONS (Show whether DF, RT, GR, etc.)

3614.5 GR

22. APPROX. DATE WORK WILL START\*

8/27/87

23. PROPOSED CASING AND CEMENTING PROGRAM

SIZE OF HOLE	SIZE OF CASING	WEIGHT PER FOOT	SETTING DEPTH	QUANTITY OF CEMENT
12 1/4"	8 5/8"	24.0#	350'	Sufficient to circulate
7 7/8"	5 1/2"	15.5#	5000'	1500 sx. to base of salt.

Pay zone will be selectively perforated and stimulated as needed for optimum production.

Attached are: 1. Location and acreage dedication plat  
2. Supplemental drilling data  
3. Surface use plan

RECEIVED  
AUG 21 10 48 AM '87  
CARLETON RESOURCE  
AREA HEADQUARTERS

POST ID #1  
9-11-87  
API NEW LOC.

IN ABOVE SPACE DESCRIBE PROPOSED PROGRAM: If proposal is to deepen or plug back, give data on present productive zone and proposed new productive zone. If proposal is to drill or deepen directionally, give pertinent data on subsurface locations and measured and true vertical depths. Give blowout prevention program, if any.

24.

SIGNED

Phonda Nelson

TITLE Production Clerk

DATE 8/20/87

(This space for Federal or State office use)

PERMIT NO.

APPROVAL DATE

APPROVED BY

TITLE

DATE

9-2-87

CONDITIONS OF APPROVAL, IF ANY:

\*See Instructions On Reverse Side

NSL-2391

NEW MEXICO OIL CONSERVATION COMMISSION  
WELL LOCATION AND ACREAGE DEDICATION PLAT

Form O-102  
Supersedes O-128  
Effective 10-65

All distances must be from the outer boundaries of the Section

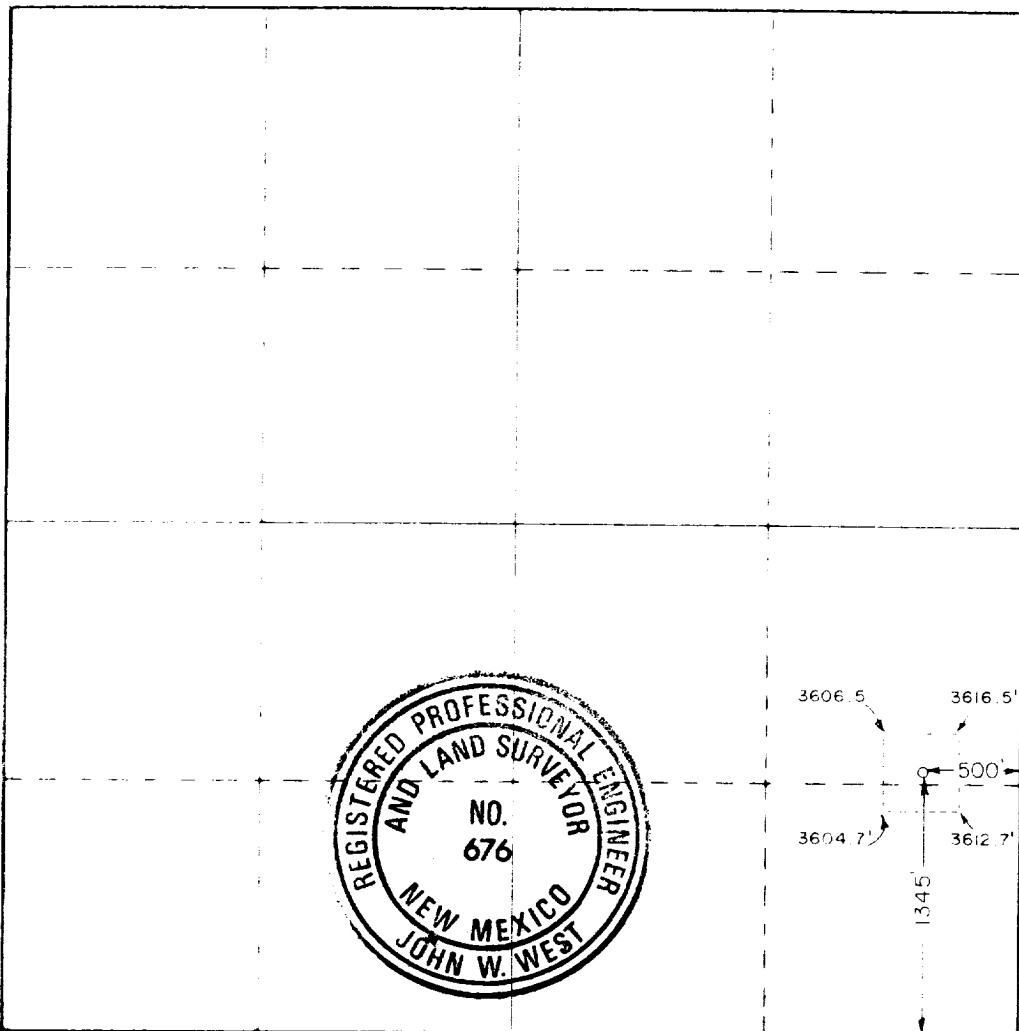
Owner MARBOB ENERGY INC.			Lease MARY DODD "B"			Well No. 62
Section 16	Township 17 SOUTH	Range 29 EAST	County EDDY			
Section Line and feet from the SOUTH		500		Section Line and feet from the EAST		
Section Line and feet from the WEST		Grbg Jackson SR Q Gb SA		Section Line and feet from the NORTH		40

- Outline the acreage dedicated to the subject well by colored pencil or hatchure marks on the plat below.
- If more than one lease is dedicated to the well, outline each and identify the ownership thereof (both as to working interest and royalty).
- If more than one lease of different ownership is dedicated to the well, have the interests of all owners been consolidated by communitization, unitization, force-pooling, etc?

Yes ☐ No ☐ If answer is "yes" type of consolidation \_\_\_\_\_

If answer is "no" list the owners and tract descriptions which have actually been consolidated (Use reverse side of this form if necessary) \_\_\_\_\_

No allowable will be assigned to the well until all interests have been consolidated (by communitization, unitization, force-pooling, or otherwise) or until a non-standard unit, eliminating such interests, has been approved by the Commission.



CERTIFICATION

I hereby certify that the information contained herein is true and complete to the best of my knowledge and belief.

*Ron Head*

Ron Head

Landman

Marbob Energy Corporation

8/19/87

I hereby certify that the well location shown on this plat was plotted from field notes of actual surveys made by me or under my supervision and that the same is true and correct to the best of my knowledge and belief.

Date Surveyed

AUGUST 7, 1987

Registered Professional Engineer and Land Surveyor

*John W. West*

Certificate No. JOHN W. WEST, 676  
RONALD J. EIDSON, 3239

0560

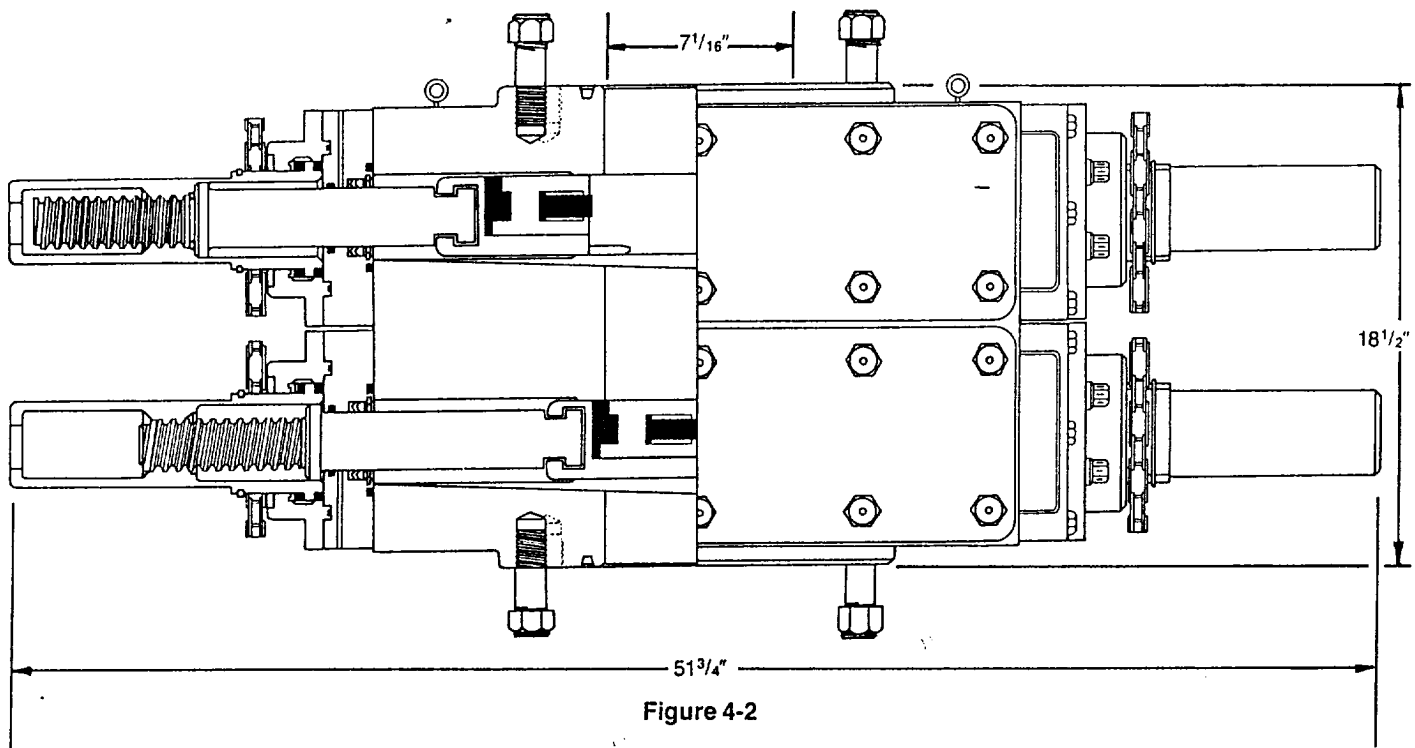


Figure 4-2

## DIMENSIONS AND WEIGHTS

		Manual
Weight	Single (pounds)	1,272
	Double (pounds)	2,335
Overall height, less studs	Single (inches)	10
	Double (inches)	18 1/2
Overall length (inches)		51 3/4
Overall width, less handwheel (inches)		20 1/4
Opening through preventer (inches)		7 1/16
Working pressure (psi)		3,000
Test pressure (psi)		6,000
Handwheel diameter (inches)		20
Ring joint gasket API number		R-45

SUP Exhibit "E"  
 Sketch of B.O.P.  
 Marbob Energy Corporation  
 M. Dodd "B" #62  
 NW1/4SE1/4, Section 10  
 T-17S, R-29E

## SUPPLEMENTAL DRILLING DATA

MARBOB ENERGY CORPORATION  
WELL #62 M. DODD "B" FEDERAL  
NW1/4SE1/4 SEC. 10-17S-29E  
EDDY COUNTY, NEW MEXICO  
(DEVELOPMENT WELL)

1. SURFACE FORMATION: Quaternary.

2. ESTIMATED TOPS OF GEOLOGIC MARKERS:

Salt	360'	Queen	1815'
Base Salt	780'	Grayburg	2140'
Yates	930'	San Andres	2510'
Seven Rivers	1145'	Glorietta	3900'

3. ANTICIPATED POROSITY ZONES:

Water	Above 180'
Oil	2350 - 5000'

4. CASING DESIGN:

SIZE	INTERVAL	WEIGHT	GRADE	JOINT	CONDITION
8 5/8"	0-350'	24.0#	K-55	STC	New
5 1/2"	0-5000'	15.5#	K-55	STC	New

5. SURFACE CONTROL EQUIPMENT: A double ram-type BOP will be used. (See diagram attached as Exhibit "E")

6. CIRCULATING MEDIUM:

0 - 350' Fresh water mud with gel or lime as needed for viscosity control.

350' - 5000' Salt water mud, conditioned as necessary for control of viscosity and water loss or gain.

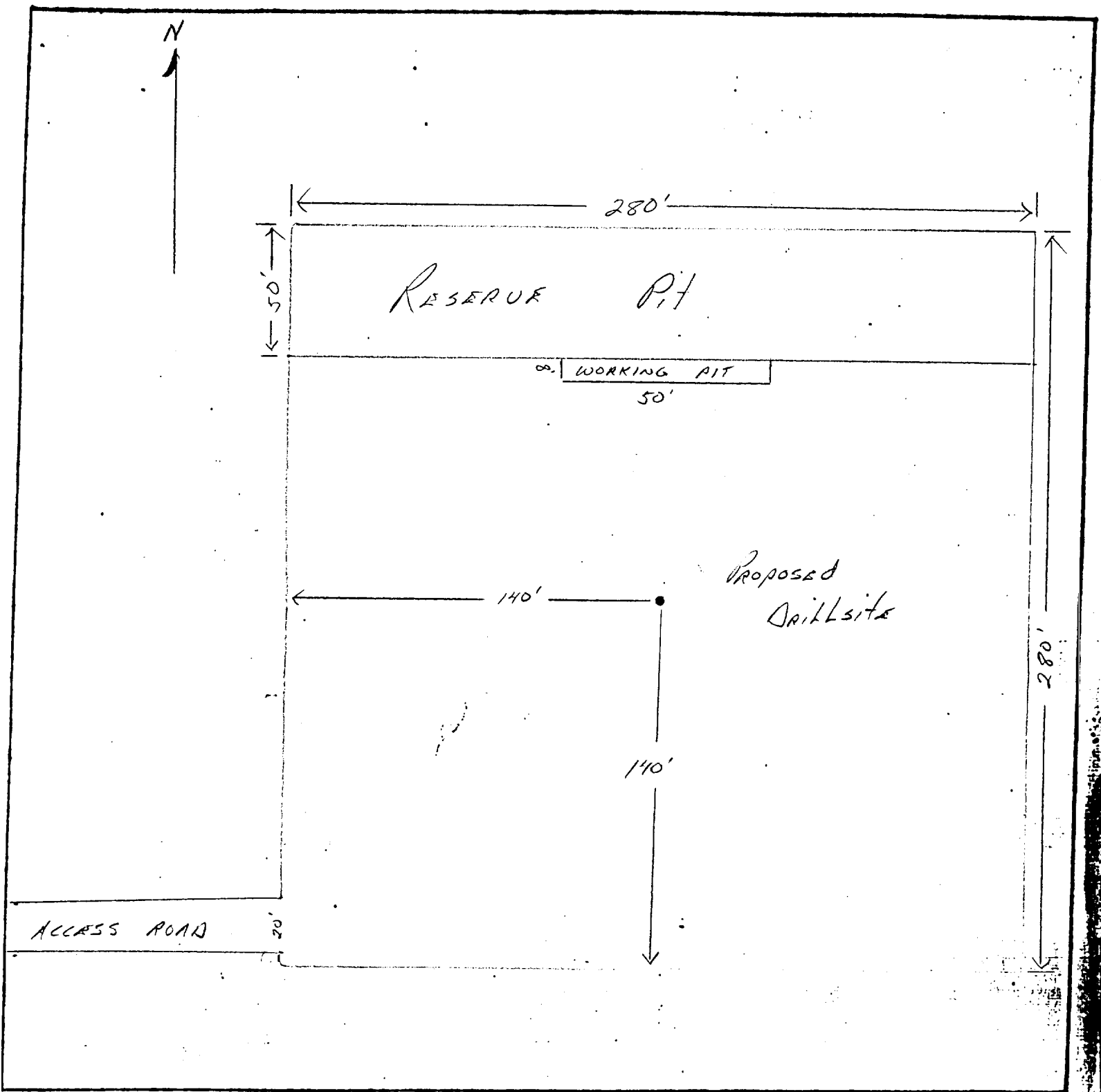
7. AUXILIARY EQUIPMENT: Drill string safety valve.

8. LOGGING PROGRAM: CNL-FDC W/GR Log will be run to TD.

9. ABNORMAL PRESSURES, TEMPERATURES OR GASES: A water flow may be encountered in the salt section.

10. ANTICIPATED STARTING DATE: It is planned that operations will commence about August 24, 1987. Duration of drilling, testing and completion operations should be one to four weeks.





LEGEND

1cm = 20 ft.

SUP Exhibit "D"

SKETCH OF PROPOSED WELL PAD  
 Marbob Energy Corporation  
 M.Dodd "B", Federal #62  
 NE1/4SE1/4, Section 10  
 T17S, R29E