

UNITED STATES
DEPARTMENT OF THE INTERIOR
GEOLOGICAL SURVEY(Other instructions on
reverse side)

30-015-23849

5. LEASE DESIGNATION AND SERIAL NO.

NM 27919

6. IF INDIAN, ALLOTTEE OR TRIBE NAME

7. UNIT AGREEMENT NAME

8. FARM OR LEASE NAME

Dewey

9. WELL NO.

#3

10. FIELD AND POOL, OR WILDCAT

Malaga Delaware

11. SEC., T., R., M., OR BLK.
AND SURVEY OR AREA

Sec. 24, T-24-S, R-28-F

12. COUNTY OR PARISH

Eddy

13. STATE

New Mexico

14. NO. OF ACRES ASSIGNED
TO THIS WELL

40

15. ROTARY OR CABLE TOOLS

Rotary

22. APPROX. DATE WORK WILL START*

December 15, 1987

APPLICATION FOR PERMIT TO DRILL, DEEPEN, OR PLUG BACK

1a. TYPE OF WORK

DRILL ☒DEEPEN ☐PLUG BACK ☐

b. TYPE OF WELL

OIL ☒GAS ☐OTHER ☐SINGLE ☐MULTIPLE ☐

2. NAME OF OPERATOR

DINERO OPERATING COMPANY

DEC 21 '87

3. ADDRESS OF OPERATOR

P.O. Drawer 10505, Midland, Texas 79702

O. C. D.

4. LOCATION OF WELL (Report location clearly and in accordance with any State requirements)

At surface
710 860' from the North line and 2310' from the West lineAt proposed prod. zone
710 860' from the North line and 2310' from the West line

14. DISTANCE IN MILES AND DIRECTION FROM NEAREST TOWN OR POST OFFICE*

Malaga, New Mexico 1.7 miles Southeast

15. DISTANCE FROM PROPOSED*

LOCATION TO NEAREST
PROPERTY OR LEASE LINE, FT.
(Also to nearest drlg. unit line, if any)

330'

16. NO. OF ACRES IN LEASE

40

18. DISTANCE FROM PROPOSED LOCATION*
TO NEAREST WELL, DRILLING, COMPLETED,
OR APPLIED FOR, ON THIS LEASE, FT.

810'

19. PROPOSED DEPTH

4600'

21. ELEVATIONS (Show whether DF, RT, GR, etc.)

G.L. 2970.3

23.

PROPOSED CASING AND CEMENTING PROGRAM

SIZE OF HOLE	SIZE OF CASING	WEIGHT PER FOOT	SETTING DEPTH	QUANTITY OF CEMENT
12 1/4	8 5/8	24 #	400	400 Circulate
7 7/8	4 1/2	11.6	4600	1100 65s

IN ABOVE SPACE DESCRIBE PROPOSED PROGRAM: If proposal is to deepen or plug back, give data on present productive zone and proposed new productive zone. If proposal is to drill or deepen directionally, give pertinent data on subsurface locations and measured and true vertical depths. Give blowout preventer program, if any.

24.

SIGNED

Deana Galston

TITLE

Production Clerk

DATE

12/1/87

(This space for Federal or State office use)

PERMIT NO.

APPROVAL DATE

APPROVED BY

TITLE

DATE

12-18-87

CONDITIONS OF APPROVAL, IF ANY:

*See Instructions On Reverse Side

NEW MEXICO OIL CONSERVATION COMMISSION
WELL LOCATION AND ACREAGE DEDICATION PLAT

Form C-102
Supersedes C-128
Effective 1-1-65

RECEIVED

All distances must be from the outer boundaries of the Section

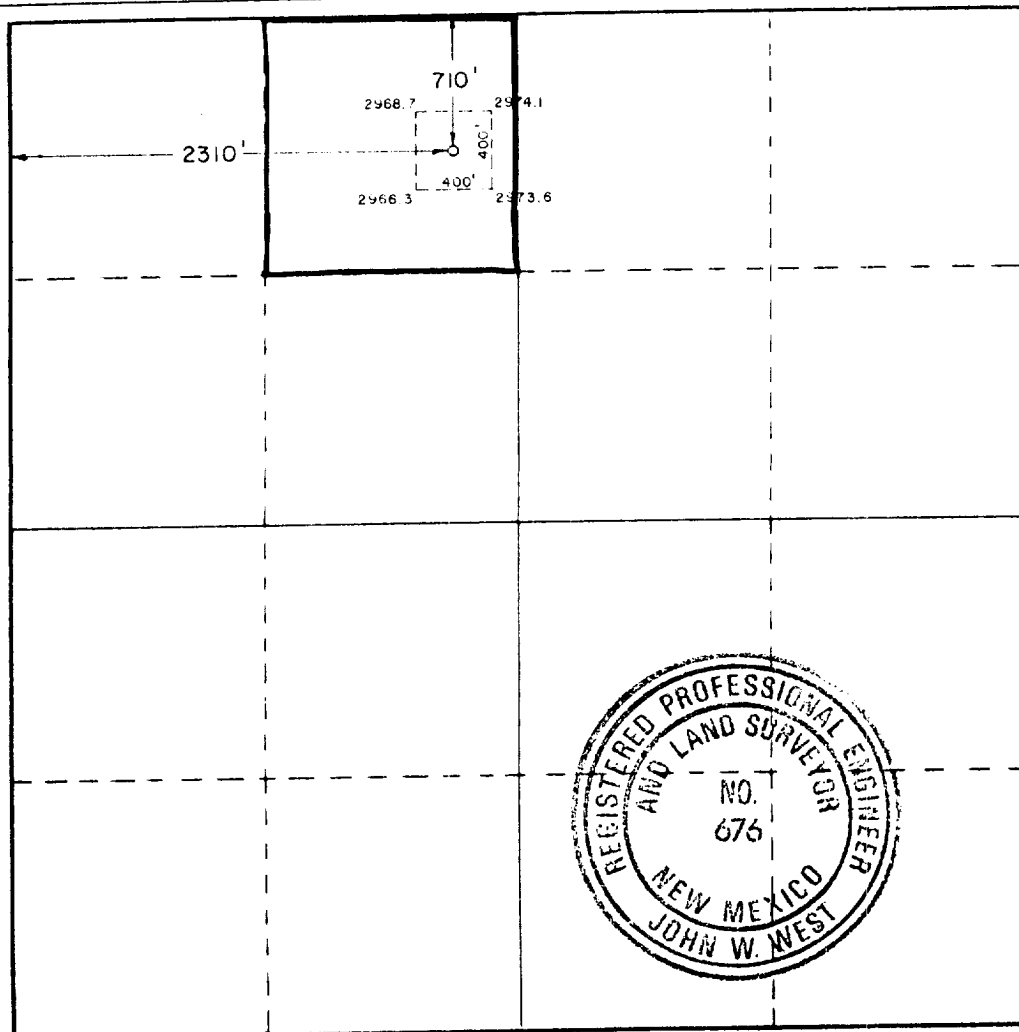
Operator Dinero Operating Company			Lease Dewey			Well No. 3		
Unit Letter C	Section 24	Township 24 South	Range 28 East	County Eddy	Dec 17 10 33 AM '87			
Actual Footage Location of Well: 710 feet from the north line and 2310 feet from the west line								
Ground Level Elev. 2970.3		Producing Formation Delaware		Pool Malaga Delaware		Dedicated Acreage: 40 Acres		

1. Outline the acreage dedicated to the subject well by colored pencil or hachure marks on the plat below.
2. If more than one lease is dedicated to the well, outline each and identify the ownership thereof (both as to working interest and royalty).
3. If more than one lease of different ownership is dedicated to the well, have the interests of all owners been consolidated by communitization, unitization, force-pooling, etc?

☐ Yes ☐ No If answer is "yes," type of consolidation _____

If answer is "no," list the owners and tract descriptions which have actually been consolidated. (Use reverse side of this form if necessary.) _____

No allowable will be assigned to the well until all interests have been consolidated (by communitization, unitization, forced-pooling, or otherwise) or until a non-standard unit, eliminating such interests, has been approved by the Commission.



CERTIFICATION

I hereby certify that the information contained herein is true and complete to the best of my knowledge and belief.

Diana Ralston

Production Clerk

Dinero Operating Company

Dec. 16, 1987

Date

I hereby certify that the well location shown on this plat was plotted from field notes of actual surveys made by me or under my supervision, and that the same is true and correct to the best of my knowledge and belief.

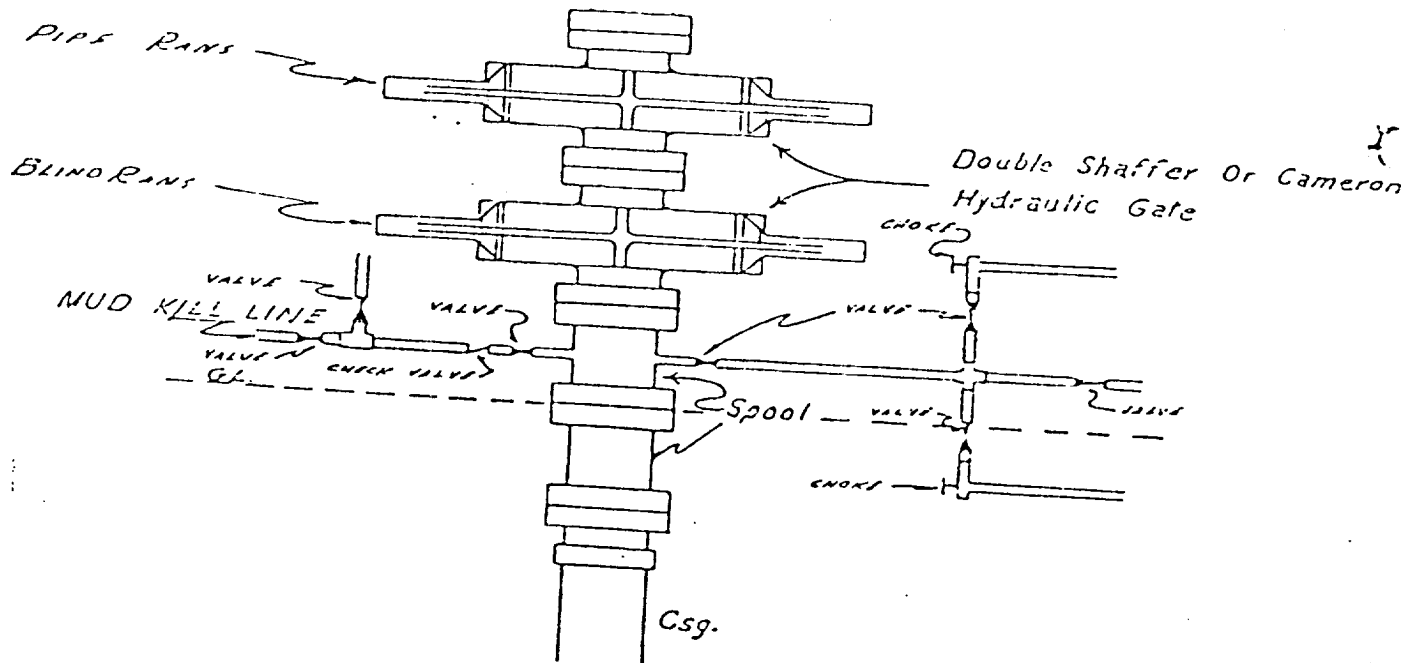
December 10, 1987

Registered Professional Engineer and/or Land Surveyor

John W. West

Certificate No. JOHN W. WEST, 676
RONALD J. EIDSON, 3239

EXHIBIT "B"
BLOW-OUT PREVENTER



NOTE:

MANUAL AND HYDRAULIC CONTROLS WITH
CLOSING UNIT NO LESS THAN 75' FROM
WELL HEAD. REMOTE CONTROLS ON RIG
FLOOR.

10" - 3000

APPLICATION FOR DRILLING
DINERO OPERATING COMPANY
DEWEY #3
860' FNL & 2310 FWL
Section 24, Eddy County, New Mexico

In conjunction with Form 9-331C, Application for Permit to Drill subject well, DINERO OPERATING COMPANY submits the following ten items of pertinent information in accordance with USGS requirements:

1. The geologic surface formation is Permian.
2. The estimated tops of geologic markers are as follows:

Fresh Water	150' (Windmill only)
Salt-Anhydrite	Redbeds to 2,600'
Delaware	
Bell Canyon	
Cherry Canyon	
Brushy Canyon	
3. The estimated depths at which anticipated water, oil or gas formation are expected to be encountered:

Water:	Approximately 150'
Oil or gas:	2850' to 3875'
4. Proposed Casing Program: See Form 9-331C.
5. Pressure Control Equipment: See Exhibit "B".
6. Mud Program: See Exhibit "A".
7. Auxiliary Equipment: None
8. Testing, Logging and Coring Programs:

Electric Logs:	Compensated Neutron- Formation Density
Drill Stem Testing:	Dual Laterolog-Gamma Ray Good Shows
9. We will mud up at approximately 2000' for sample control.
Do not expect high pressure.
10. Anticipated starting date: December 15, 1987.

Exhibit "A"

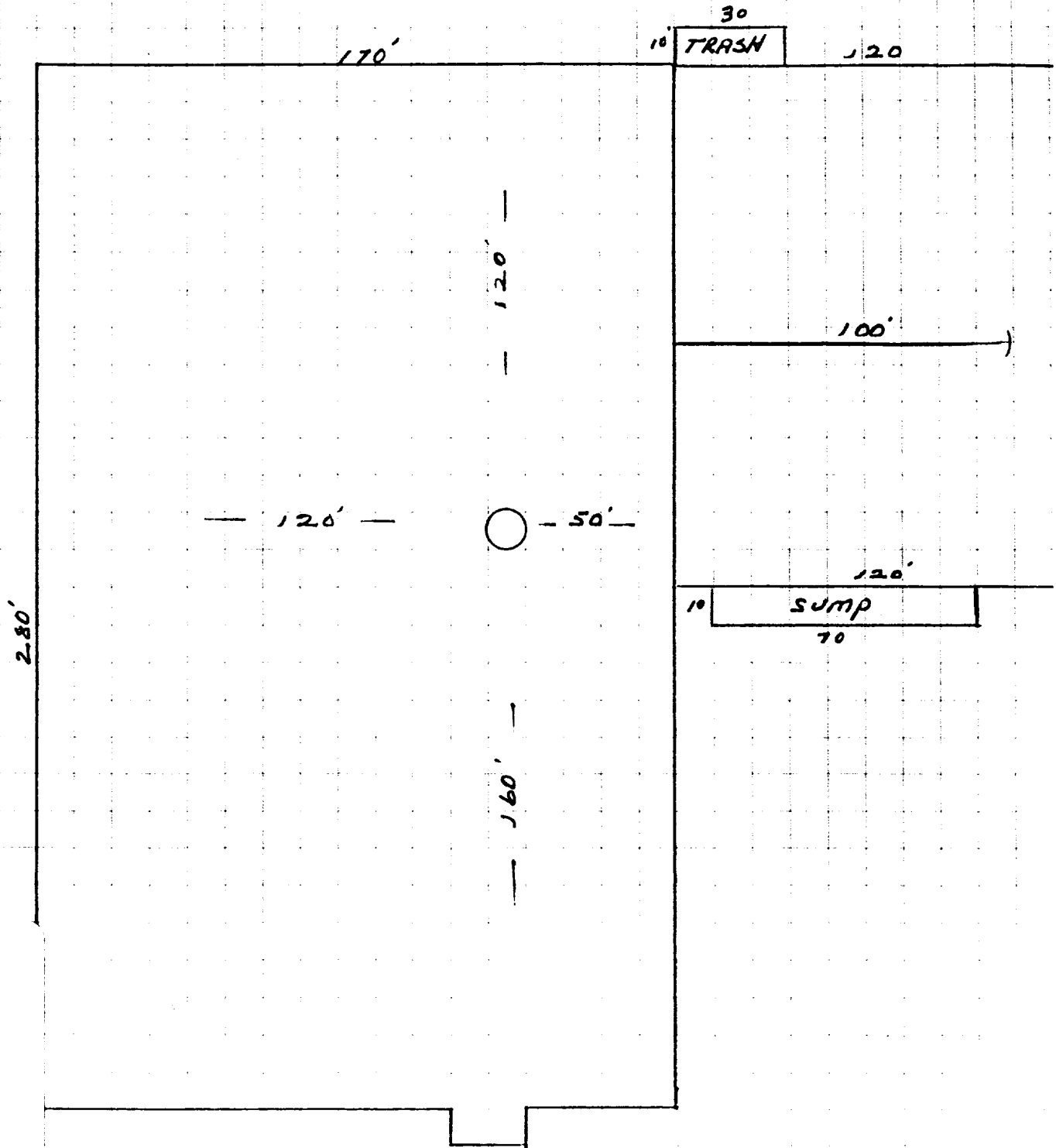
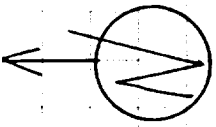
KENAC MUD, INC.

P. O. Box 11287 • Odessa, Texas 79760 • Tel. 915 / 563-5061 or 367-5010

ESTIMATED FORMATION TOPS

Salt	@	1800'
Lamar	@	2500'
Delaware Sd.	@	2600'
Cherry Canyon	@	3600'
P.T.D.	@	4500'

EXHIBIT "G"



Dewey #3
 860' FNL & 2310' FWL
 Sec. 24, T-24-S, R-28-E
 Eddy County, New Mexico

NEW MEXICO
(EDDY COUNTY)
MALAGA QUADRANGLE
15-MINUTE SERIES

