

UNITED STATES  
DEPARTMENT OF THE INTERIOR  
BUREAU OF LAND MANAGEMENT

APPLICATION FOR PERMIT TO DRILL, DEEPEN, OR PLUG BACK

1a. TYPE OF WORK

DRILL ☒

DEEPEN ☐

PLUG BACK ☐

b. TYPE OF WELL

OIL WELL ☒

GAS WELL ☐

OTHER

SINGLE ZONE ☒

MULTIPLE ZONE ☐

2. NAME OF OPERATOR

PETROPLEX EQUIPMENT, INC.

3. ADDRESS OF OPERATOR

DEC 29 '87

P. O. BOX 30432, MIDLAND, TEXAS 79712

4. LOCATION OF WELL (Report location clearly and in accordance with any State requirements.)

At surface

O. C. D.

330' FSL AND 1253' FWL OF SECTION 31

At proposed well site

14. DISTANCE IN MILES AND DIRECTION FROM NEAREST TOWN OR POST OFFICE\*

8 MILES WEST-NORTHWEST OF LOCO HILLS, NEW MEXICO

15. DISTANCE FROM PROPOSED\*

LOCATION TO NEAREST

PROPERTY OR LEASE LINE, FT.

(Also to nearest drlg. unit line, if any)

330'

16. NO. OF ACRES IN LEASE

331.18

17. NO. OF ACRES ASSIGNED

TO THIS WELL

40

18. DISTANCE FROM PROPOSED LOCATION\*

TO NEAREST WELL, DRILLING, COMPLETED,

OR APPLIED FOR, ON THIS LEASE, FT.

-

19. PROPOSED DEPTH

2600'

20. ROTARY OR CABLE TOOLS

ROTARY

21. ELEVATIONS (Show whether DF, RT, GR, etc.)

3665.6' GL

22. APPROX. DATE WORK WILL START\*

UPON APPROVAL

23.

PROPOSED CASING AND CEMENTING PROGRAM

SIZE OF HOLE	SIZE OF CASING	WEIGHT PER FOOT	SETTING DEPTH	QUANTITY OF CEMENT
16"	13-3/8" CONDUCTOR CASING		20'	READY-MIX
11"	8-5/8"	24#	250'	SUFFICIENT TO CIRCULATE
7-7/8"	5-1/2"	14#	2600'	SUFFICIENT TO CIRCULATE

AFTER SETTING PRODUCTION CASING, PAY ZONE WILL BE PERFORATED AND STIMULATED AS NECESSARY.

SEE ATTACHED FOR: SUPPLEMENTAL DRILLING DATA  
BOP SKETCH  
SURFACE USE AND OPERATIONS PLAN

IN THE EVENT OF INCLEMENT WEATHER OR A DELAY IN THE AVAILABILITY OF DRILLING RIG, THIS WELL MAY BE SPUDDED WITH A RAT-MACHINE.

POST ID#1  
NL & API  
1-1-88

IN ABOVE SPACE DESCRIBE PROPOSED PROGRAM: If proposal is to deepen or plug back, give data on present productive zone and proposed new productive zone. If proposal is to drill or deepen directionally, give pertinent data on subsurface locations and measured and true vertical depths. Give blowout preventer program, if any.

24.

SIGNED

Arthur R. Brown

TITLE

Agent

DATE

12-23-87

(This space for Federal or State office use)

PERMIT NO.

APPROVAL DATE

APPROVED BY

TITLE

DATE

12-28-87

CONDITIONS OF APPROVAL, IF ANY:

\*See Instructions On Reverse Side

Title 18 U.S.C. Section 1001, makes it a crime for any person knowingly and willfully to make to any department or agency of the United States any false, fictitious or fraudulent statements or representations as to any matter within its jurisdiction.

NEW MEXICO OIL CONSERVATION COMM. ON  
WELL LOCATION AND ACREAGE DEDICATION PLAT

Form C-102  
Supersedes C-128  
Effective 1-1-65

All distances must be from the outer boundaries of the Section

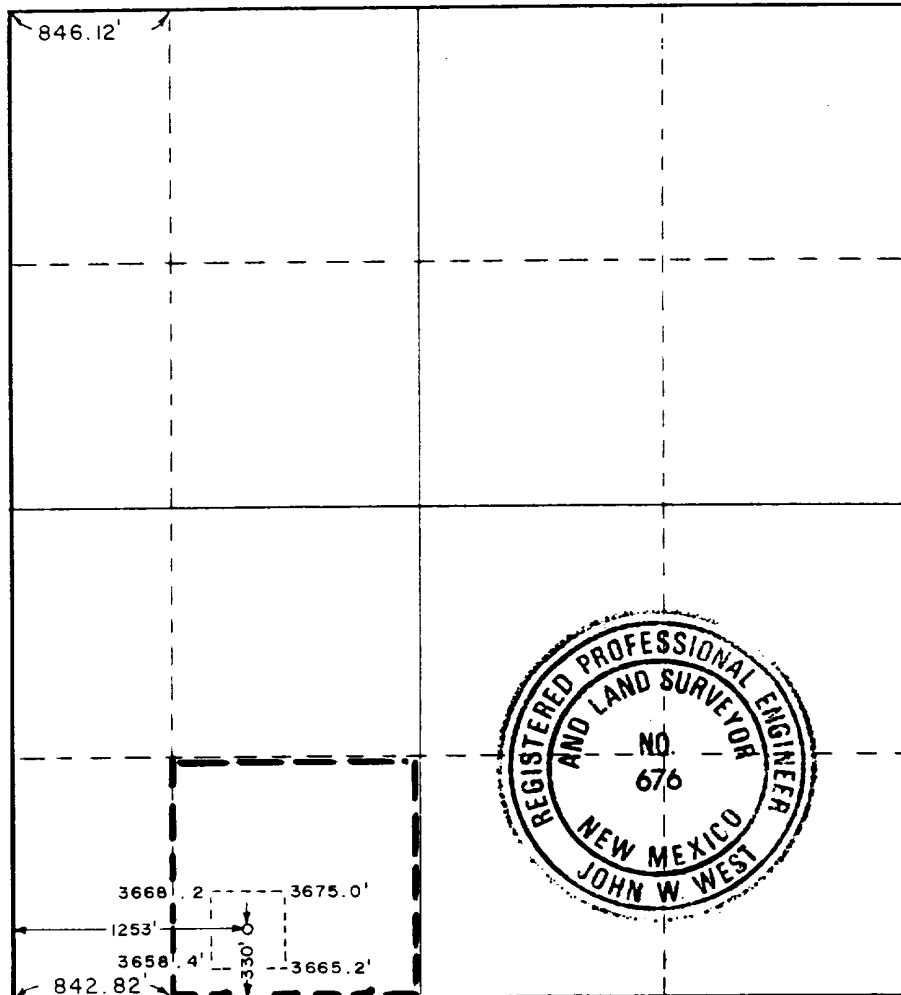
Operator PETROPLEX EQUIPMENT INC.		Lease TENNECO FEDERAL		Well No. 1
Unit Letter N	Section 31	Township 16 SOUTH	Range 29 EAST	County EDDY
Actual Footage Location of Well: 330 feet from the SOUTH line and 1253 feet from the WEST line				
Ground Level Elev. 3665.6	Producing Formation GRAYBURG-SAN ANDRES	Pool GRAYBURG JACKSON SR-Q-GB-SA	Dedicated Acreage: 40 Acres	

1. Outline the acreage dedicated to the subject well by colored pencil or hachure marks on the plat below.
2. If more than one lease is dedicated to the well, outline each and identify the ownership thereof (both as to working interest and royalty).
3. If more than one lease of different ownership is dedicated to the well, have the interests of all owners been consolidated by communitization, unitization, force-pooling, etc?

☐ Yes ☐ No If answer is "yes," type of consolidation \_\_\_\_\_

If answer is "no," list the owners and tract descriptions which have actually been consolidated. (Use reverse side of this form if necessary.) \_\_\_\_\_

No allowable will be assigned to the well until all interests have been consolidated (by communitization, unitization, forced-pooling, or otherwise) or until a non-standard unit, eliminating such interests, has been approved by the Commission.



CERTIFICATION

I hereby certify that the information contained herein is true and complete to the best of my knowledge and belief.

*Arthur R. Brown*  
Arthur R. Brown

Position

Agent

Company

PETROPLEX EQUIPMENT, INC.

Date

DECEMBER 23, 1987

I hereby certify that the well location shown on this plat was plotted from field notes of actual surveys made by me or under my supervision, and that the same is true and correct to the best of my knowledge and belief.

Date Surveyed

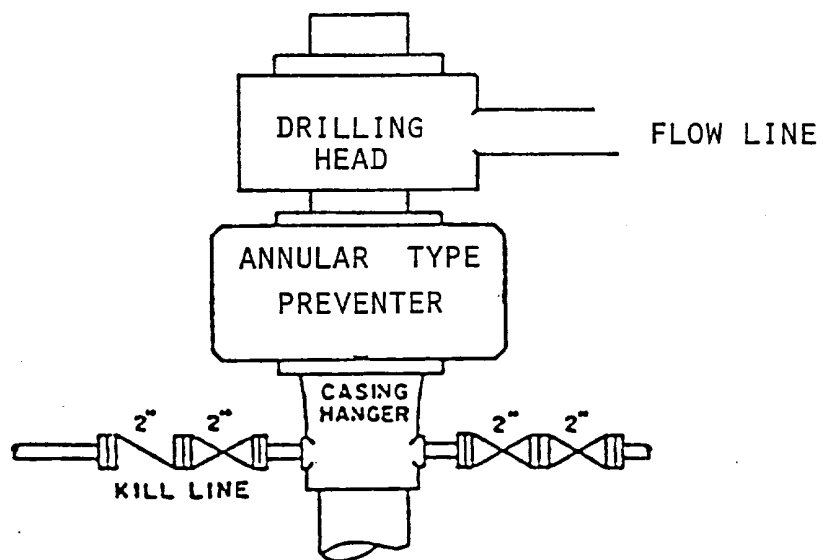
December 22, 1987

Registered Professional Engineer and/or Land Surveyor

*John W. West*

Certificate No. JOHN W. WEST, 676

RONALD J. EIDSON, 3239



BOP STACK

3000 PSI WORKING PRESSURE

BOP ARRANGEMENT

## SUPPLEMENTAL DRILLING DATA

PETROPLEX EQUIPMENT, INC.

WELL NO.1 TENNECO FEDERAL

1. SURFACE FORMATION: Quaternary.

2. ESTIMATED TOPS OF GEOLOGIC MARKERS:

Yates	800'
Seven Rivers	1060'
Queen	1620'
Grayburg	2020'
San Andres	2400'

3. ANTICIPATED POSSIBLE HYDROCARBON BEARING ZONES:

Grayburg	Oil
San Andres	Oil

4. PROPOSED CASING AND CEMENTING PROGRAM:

CASING SIZE	SETTING DEPTH		WEIGHT	GRADE	JOINT
	FROM	TO			
8-5/8"	0	250'	24#	J-55	STC
5-1/2"	0	2600'	14#	J-55	STC

8-5/8" casing will be cemented with approximately 250 sacks of Class "C" cement. Cement to circulate.

5-1/2" casing will be cemented with sufficient Light cement, tailed-in with 200 sacks of Class "C", to circulate.

5. PRESSURE CONTROL EQUIPMENT:

Pressure control equipment, while drilling below the 8-5/8" casing seat, will consist of a 3000 psi working pressure annular type preventer with a drilling head on top.

A BOP sketch is attached.

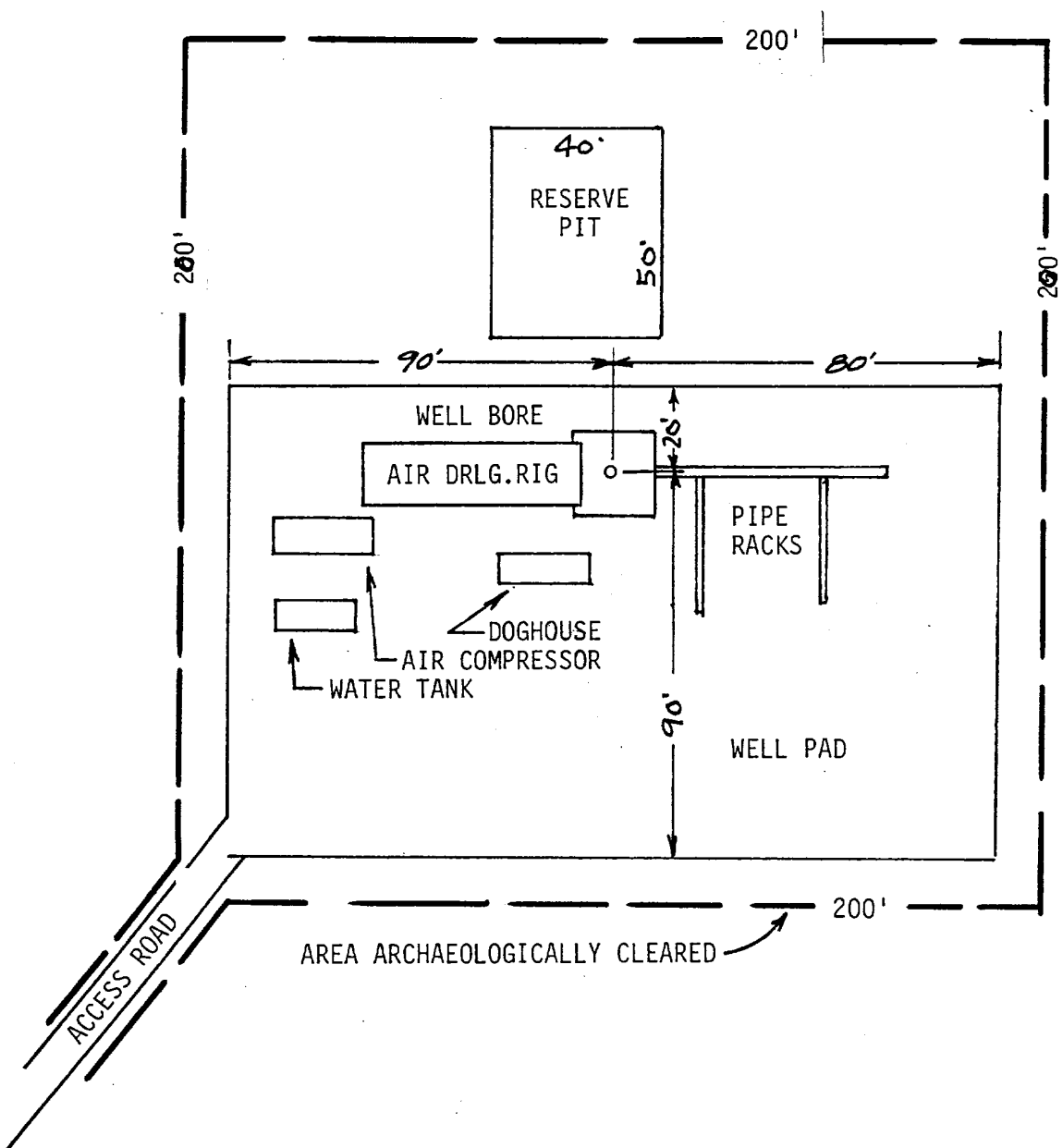


EXHIBIT "C"  
PETROPLEX EQUIPMWNT, INC.  
WELL NO.1 TENNECO FEDERAL  
DRILLING RIG LAYOUT  
SCALE: None

