

UNITED STATES  
DEPARTMENT OF THE INTERIOR  
BUREAU OF LAND MANAGEMENT

APPLICATION FOR PERMIT TO DRILL, DEEPEN, OR PLUG BACK

1a. TYPE OF WORK

DRILL ☒

DEEPEN ☐

RECEIVED  
PLUG BACK ☐

b. TYPE OF WELL

OIL  
WELL ☒

GAS  
WELL ☐

OTHER

SINGLE  
ZONE ☒

MULTIPLE  
ZONE ☐

JAN 05 '88

2. NAME OF OPERATOR

MALLON OIL COMPANY

3. ADDRESS OF OPERATOR

1099 18TH STREET, SUITE 2750, DENVER, COLORADO 80202

4. LOCATION OF WELL (Report location clearly and in accordance with any State requirements.)\*

At surface

660' FSL AND 2105' FWL OF SECTION 28

At proposed prod. zone

14. DISTANCE IN MILES AND DIRECTION FROM NEAREST TOWN OR POST OFFICE\*

16 AIR MILES SOUTH-SOUTHEAST OF MALAGA, NEW MEXICO

15. DISTANCE FROM PROPOSED\*

LOCATION TO NEAREST  
PROPERTY OR LEASE LINE, FT.  
(Also to nearest drig. unit line, if any)

660'

16. NO. OF ACRES IN LEASE

1318.02

17. NO. OF ACRES ASSIGNED  
TO THIS WELL

40

18. DISTANCE FROM PROPOSED LOCATION\*

TO NEAREST WELL, DRILLING, COMPLETED,  
OR APPLIED FOR, ON THIS LEASE, FT.

1145'

19. PROPOSED DEPTH

5200'

20. ROTARY OR CABLE TOOLS

ROTARY

21. ELEVATIONS (Show whether DF, RT, GR, etc.)

2874' GL

22. APPROX. DATE WORK WILL START\*

UPON APPROVAL

23.

PROPOSED CASING AND CEMENTING PROGRAM

SIZE OF HOLE	SIZE OF CASING	WEIGHT PER FOOT	SETTING DEPTH	QUANTITY OF CEMENT
12-1/4"	8-5/8"	24#	400'	SUFFICIENT TO CIRCULATE 300 SACKS
7-7/8"	5-1/2"	14#	5200'	

AFTER SETTING PRODUCTION CASING, PAY ZONE WILL BE PERFORATED AND  
STIMULATED AS NECESSARY.

SEE ATTACHED FOR: SUPPLEMENTAL DRILLING DATA  
BOP SKETCH  
SURFACE USE AND OPERATIONS PLAN

RECEIVED  
DEC 30 10 13 AM '87  
BUREAU OF LAND MANAGEMENT  
WASHINGTON, D.C.

IN ABOVE SPACE DESCRIBE PROPOSED PROGRAM: If proposal is to deepen or plug back, give data on present productive zone and proposed new productive zone. If proposal is to drill or deepen directionally, give pertinent data on subsurface locations and measured and true vertical depths. Give blowout preventer program, if any.

24.

SIGNED

Arthur R. Brown

TITLE

Agent

DATE

12-23-87

(This space for Federal or State office use)

PERMIT NO.

APPROVAL DATE

APPROVED BY

TITLE

DATE

1-4-88

CONDITIONS OF APPROVAL, IF ANY:

\*See Instructions On Reverse Side

Title 18 U.S.C. Section 1001, makes it a crime for any person knowingly and willfully to make to any department or agency of the United States any false, fictitious or fraudulent statements or representations as to any matter within its jurisdiction.

NEW MEXICO OIL CONSERVATION COMMISSION  
WELL LOCATION AND ACREAGE DEDICATION PLAT

Form O-112  
Supersedes O-126  
Effective 1-1-65

All distances must be from the outer boundaries of the Section

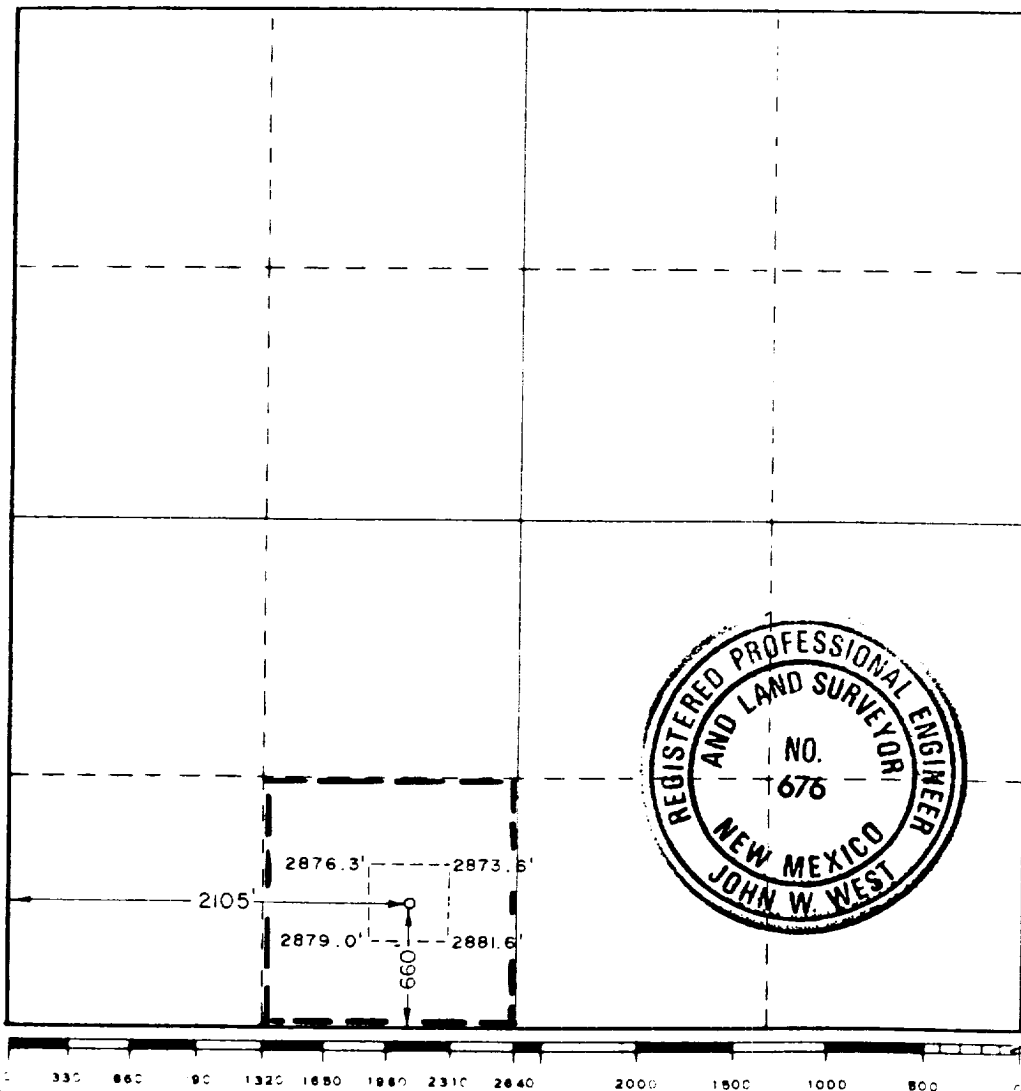
Operator <b>MALLON OIL CO.</b>		Lease <b>AMOCO FEDERAL</b>		Acres <b>15</b>
Section <b>28</b>	Township <b>26 SOUTH</b>	Range <b>29 EAST</b>	County <b>EDDY</b>	
Actual Surface Location of Well: 660 feet from the <b>SOUTH</b> line and 2105 feet from the <b>WEST</b> line				
Ground Level Elev. <b>2874.0</b>	Producing Formation <b>DELAWARE</b>	Pool <b>UNDES. BRUSHY DRAW DELAWARE</b>	Estimated Acreage <b>40</b>	

1. Outline the acreage dedicated to the subject well by colored pencil or hatchure marks on the plat below.
2. If more than one lease is dedicated to the well, outline each and identify the ownership thereof (both as to working interest and royalty).
3. If more than one lease of different ownership is dedicated to the well, have the interests of all owners been consolidated by communitization, unitization, force-pooling, etc?

☐ Yes ☐ No If answer is "yes," type of consolidation \_\_\_\_\_

If answer is "no," list the owners and tract descriptions which have actually been consolidated (Use reverse side of this form if necessary.) \_\_\_\_\_

No allowable will be assigned to the well until all interests have been consolidated (by communitization, unitization, forced-pooling, or otherwise) or until a non-standard unit, eliminating such interests, has been approved by the Commission.



CERTIFICATION

I hereby certify that the information contained herein is true and complete to the best of my knowledge and belief.

*Arthur R. Brown*  
Arthur R. Brown

Agent

MALLON OIL COMPANY

DECEMBER 23, 1987

I hereby certify that the well location shown on this plat was plotted from field notes of actual surveys made by me or under my supervision and that the same is true and correct to the best of my knowledge and belief.

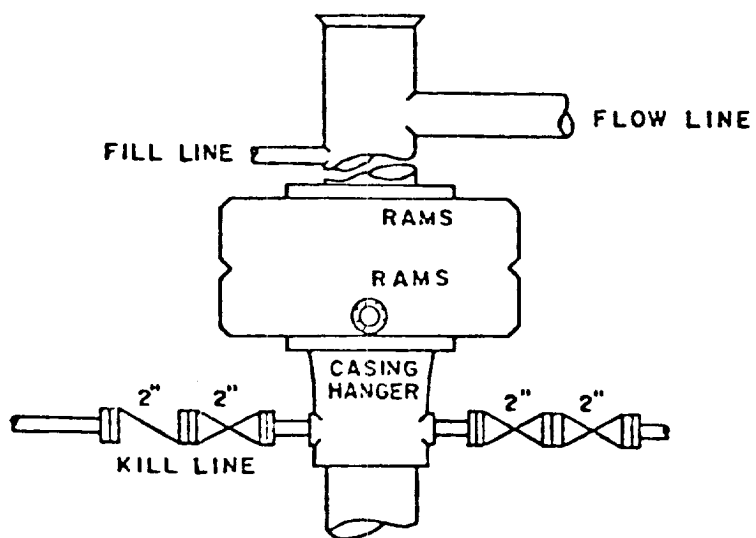
Date Surveyed

December 8, 1987

Registered Professional Engineer and Land Surveyor

*John W. West*

Certificate No. **JOHN W. WEST** 676  
RONALD J. EIDSON, 3239



BOP STACK

3000 PSI WORKING PRESSURE

BOP ARRANGEMENT

## SUPPLEMENTAL DRILLING DATA

### MALLON OIL COMPANY WELL NO.15 AMOCO FEDERAL

1. SURFACE FORMATION: Quaternary.

2. ESTIMATED TOPS OF GEOLOGIC MARKERS:

Rustler Anhydrite	300'
Delaware	2870'
Bell Canyon	2900'
Cherry Canyon	3700'
Brushy Canyon	5150'

3. ANTICIPATED POSSIBLE HYDROCARBON BEARING ZONES:

Cherry Canyon	Oil
---------------	-----

4. PROPOSED CASING AND CEMENTING PROGRAM:

CASING SIZE	SETTING DEPTH		WEIGHT	GRADE	JOINT
	FROM	TO			
8-5/8"	0	400'	24#	K-55	STC
5-1/2"	0	5200'	14#	K-55	STC

8-5/8" casing will be cemented with approximately 250 sacks of Class "C" cement. Cement to circulate.

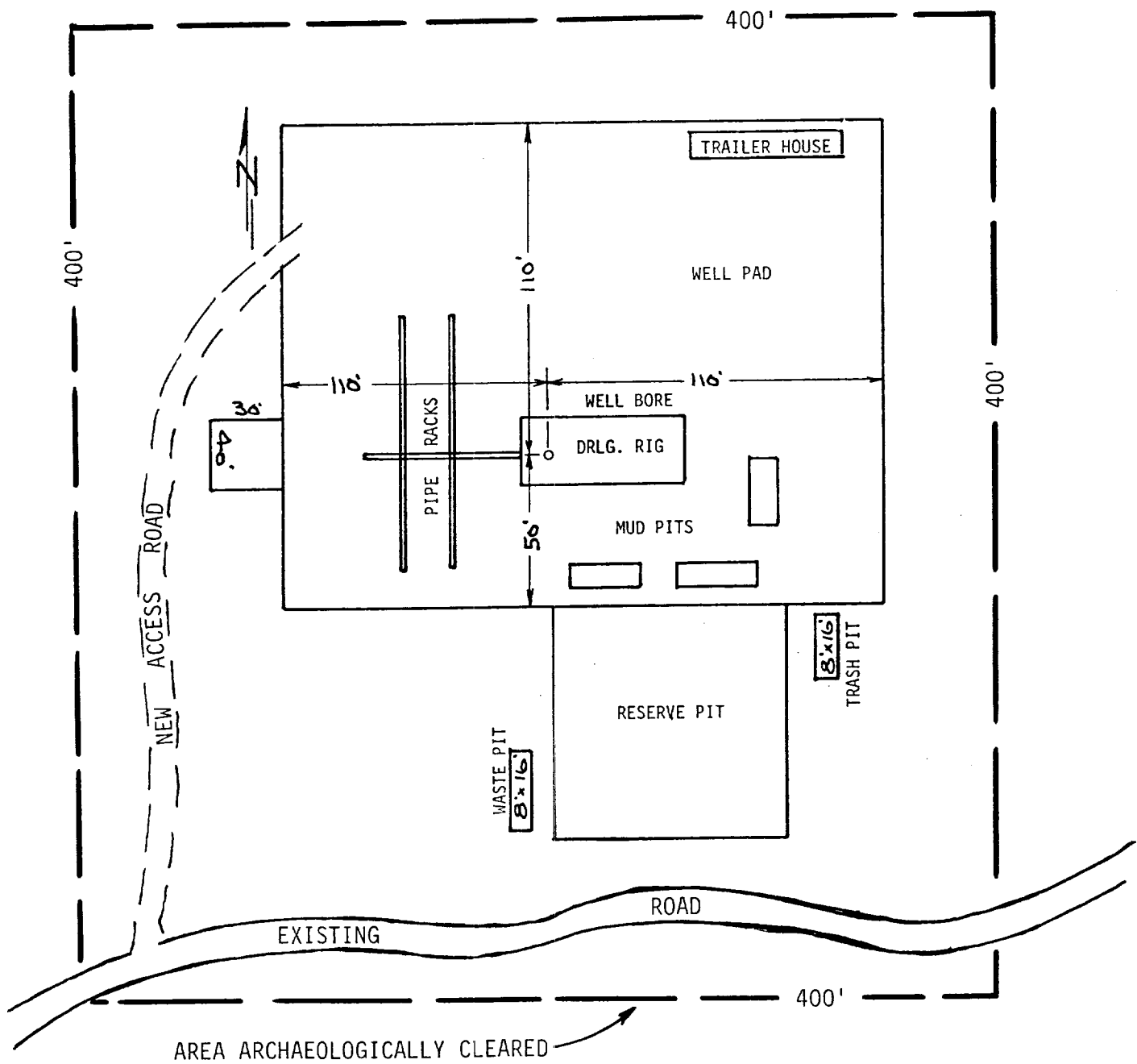
5-1/2" casing will be cemented with approximately 300 sacks of cement.

Equivalent or adequate grades and weights of casing may be substituted at time casing is run, depending on availability.

5. PRESSURE CONTROL EQUIPMENT:

A 3000 psi working pressure, double ram type preventer will be in use while drilling below the surface casing.

A BOP sketch is attached.



### EXHIBIT "C"

MALLON OIL COMPANY  
WELL NO.15 AMOCO FEDERAL  
DRILLING RIG LAYOUT  
SCALE: None

