

UNITED STATES
DEPARTMENT OF THE INTERIOR
BUREAU OF LAND MANAGEMENT

APPLICATION FOR PERMIT TO DRILL, DEEPEN, OR PLUG BACK

1A. TYPE OF WORK

DRILL ☒

DEEPEN ☐

PLUG BACK ☐

B. TYPE OF WELL

OIL
WELL ☒

GAS
WELL ☐

OTHER

SINGLE
ZONE

MULTIPLE
ZONE ☐

2. NAME OF OPERATOR

Chisos Operating, Inc.

3. ADDRESS OF OPERATOR

P.O. Box 10865, Midland, Texas 79702

4. LOCATION OF WELL (Report location clearly and in accordance with any State requirements.)

At surface

660' FSL & FWL of Sec. 13

710 FS & 610 FWL

O. C. D.

At proposed prod. zone

660' FSL & FWL of Sec. 13

14. DISTANCE IN MILES AND DIRECTION FROM NEAREST TOWN OR POST OFFICE*

35 miles Southeast of Carlsbad, New Mexico

15. DISTANCE FROM PROPOSED*

LOCATION TO NEAREST

PROPERTY OR LEASE LINE, FT.

(Also to nearest drlg. unit line, if any)

660'

18. DISTANCE FROM PROPOSED LOCATION*

TO NEAREST WELL, DRILLING, COMPLETED,

OR APPLIED FOR, ON THIS LEASE, FT.

NA

16. NO. OF ACRES IN LEASE

1280

19. PROPOSED DEPTH

7,000'

17. NO. OF ACRES ASSIGNED

TO THIS WELL

40

20. ROTARY OR CABLE TOOLS

Rotary

21. ELEVATIONS (Show whether DF, RT, GR, etc.)

3149 G.L.

22. APPROX. DATE WORK WILL START*

June 30, 1988

23.

PROPOSED CASING AND CEMENTING PROGRAM

SIZE OF HOLE	SIZE OF CASING	WEIGHT PER FOOT	SETTING DEPTH	QUANTITY OF CEMENT
17 1/2"	12-3/4"	42#	800'	See Exhibit "G" CIRCULATE
11"	8 5/8"	24 # 32#	3800'	tie cmt. back
7 7/8"	5 1/2"	15.5# & 17.0#	7000'	

BOP Program - Exhibit "D"

Mud Program - Exhibit "E"

IN ABOVE SPACE DESCRIBE PROPOSED PROGRAM: If proposal is to deepen or plug back, give data on present productive zone and proposed new productive zone. If proposal is to drill or deepen directionally, give pertinent data on subsurface locations and measured and true vertical depths. Give blowout preventer program, if any.

24.

SIGNED

Ron Silbrant

TITLE Vice President-Operations

DATE May 23, 1988

(This space for Federal or State office use)

PERMIT NO.

APPROVAL DATE

APPROVED BY

TITLE

DATE

CONDITIONS OF APPROVAL, IF ANY:

*See Instructions On Reverse Side

Title 18 U.S.C. Section 1001, makes it a crime for any person knowingly and willfully to make to any department or agency of the United States any false, fictitious or fraudulent statements or representations as to any matter within its jurisdiction.

**NEW MEXICO OIL CONSERVATION COMMISSION
WELL LOCATION AND ACREAGE DEDICATION PLAT**

Form C-102
Supersedes C-128
Effective 1-1-65

All distances must be from the outer boundaries of the Section.

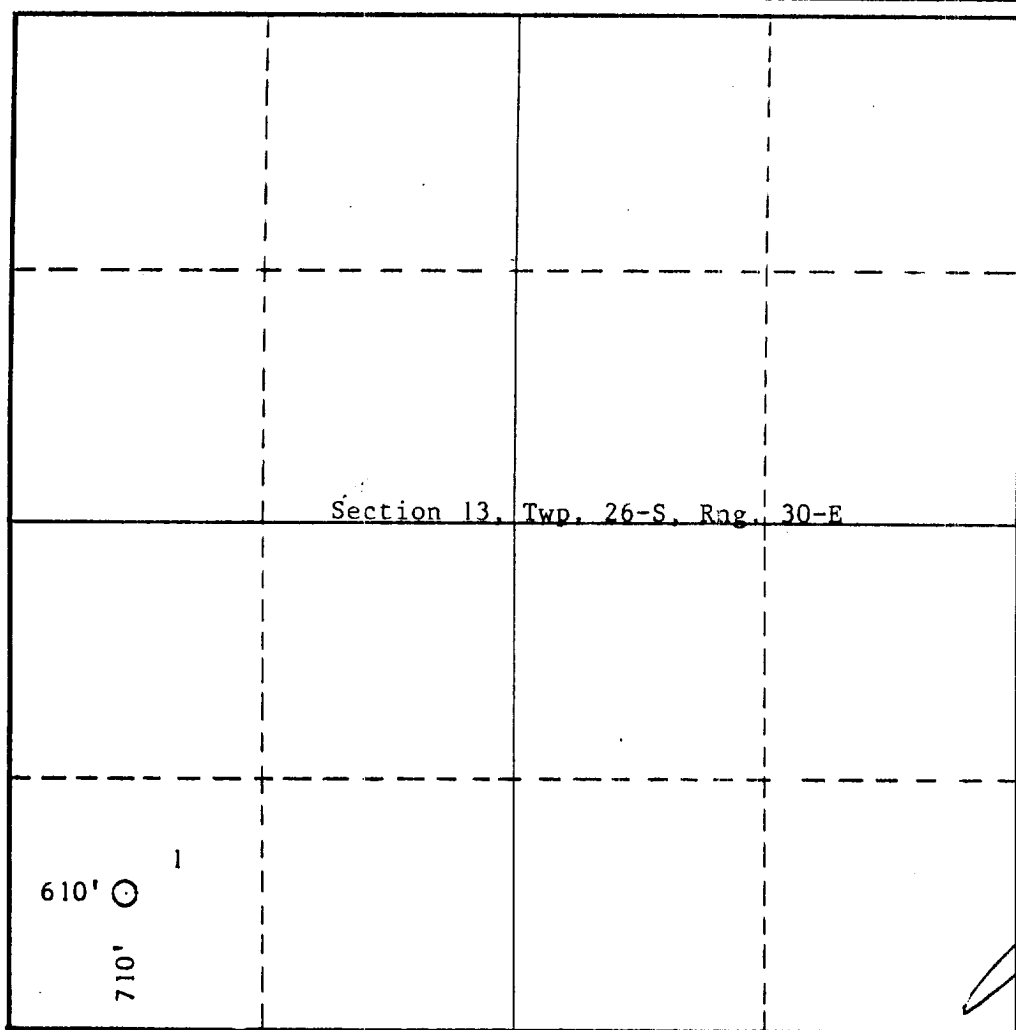
Operator CHISOS OPERATING INC.			Lease Sun-Federal		Well No. 1
Unit Letter M	Section 13	Township 26-S	Range 30-E	County Eddy	
Actual Footage Location of Well: 710 feet from the South line and 610 feet from the West line					
Ground Level Elev. 3149	Producing Formation Delaware		Pool N. Ross Draw Delaware		Dedicated Acreage: 40 Acres

1. Outline the acreage dedicated to the subject well by colored pencil or hachure marks on the plat below.
2. If more than one lease is dedicated to the well, outline each and identify the ownership thereof (both as to working interest and royalty).
3. If more than one lease of different ownership is dedicated to the well, have the interests of all owners been consolidated by communitization, unitization, force-pooling, etc?

☐ Yes ☐ No If answer is "yes," type of consolidation _____

If answer is "no," list the owners and tract descriptions which have actually been consolidated. (Use reverse side of this form if necessary.) _____

No allowable will be assigned to the well until all interests have been consolidated (by communitization, unitization, forced-pooling, or otherwise) or until a non-standard unit, eliminating such interests, has been approved by the Commission.



CERTIFICATION

I hereby certify that the information contained herein is true and complete to the best of my knowledge and belief.

Ron Gilbreath

Name

Ron Gilbreath

Position

V.P. of Operations

Company

Chisos Operating Inc.

Date

5/27/88

I hereby certify that the well location shown on this plat was plotted from field notes of actual surveys made by me or under my supervision, and that the same is true and correct to the best of my knowledge and belief.

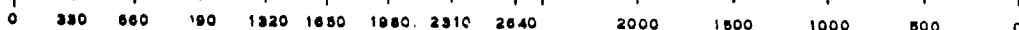
May 16, 1988

Date Surveyed

[Signature]
Registered Professional Engineer
and/or Land Surveyor

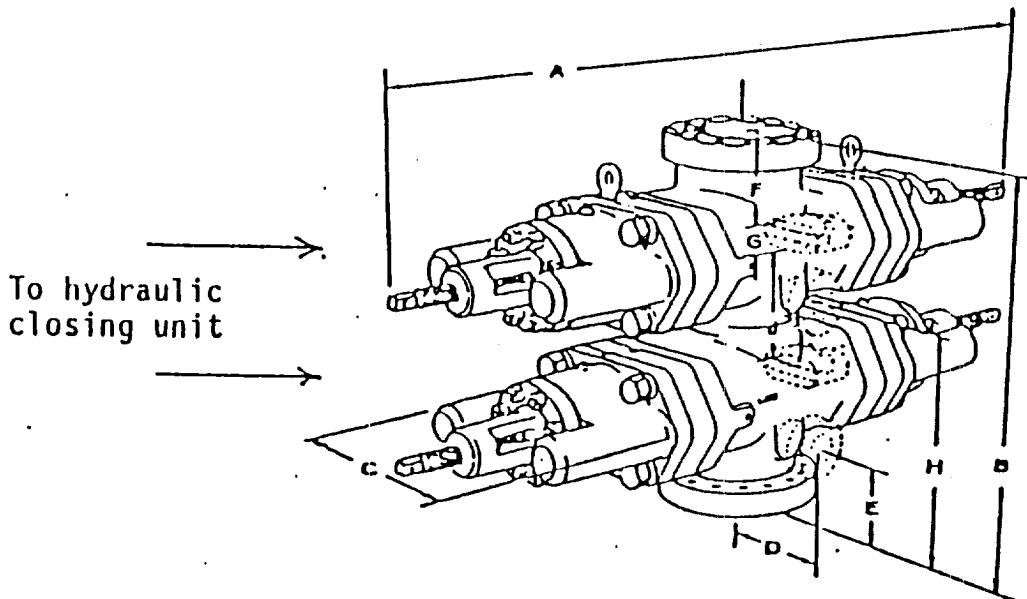
Certificate No.

754



BOP Diagram

After 12-3/4 surface casing has been set and cement circulated to the surface, an 11" double ram BOP, as shown below will be put on the hole. This blowout preventer will be connected to a hydraulically controlled closing unit. The pressure rating on this BOP is 3000#, and will have blank and 4-1/2" pipe rams.



Chisos Operating Inc.
Sun-Federal Ross Draw Unit No. 1

1. SURFACE FORMATION: Quaternary

2. ESTIMATED TOPS OF GEOLOGIC MARKERS:

Impervious Dewey Lake	300'
Rustler	650'
Salada	1350'
Castile	1600'
Delaware Lime	3600'
Bone Springs	7600'

3. ANTICIPATED POSSIBLE HYDROCARBON BEARING ZONES

Delaware Sand Series	3600'-7000'
----------------------	-------------

4. PROPOSED CASING AND CEMENTING PROGRAM:

The proposed casing program is shown on Form 3160-3.

Hole for surface casing will be drilled to a depth below fresh water zones. Surface casing will be run to a depth sufficient to cover all fresh water sands. This depth is anticipated to be 800' and will be cemented with approximately 800 sacks of Class "C" cement which is designed to circulate.

The intermediate casing will be run and cemented at 3800', prior to entering the Delaware Section. 380 sacks of Class "C" cement will tie it back into the surface casing.

The production casing will be run to total depth and will be cemented with approximately 1370 sacks of cement in two stages.

5. PRESSURE CONTROL EQUIPMENT:

Pressure control equipment will consist of a 3000# double ram hydraulically controlled blow out preventer and a 3000# choke manifold.

6. CIRCULATING MEDIUM:

The circulating medium will be fresh water down to the depth

of setting the surface casing at approximately 800'. Brine water of sufficient weight to control the hole will be used in the remainder of the drilling operations.

7. AUXILIARY EQUIPMENT:

Drill string safety valves will be maintained on the rig floor while drilling operations are in progress.

8. TESTING, LOGGING, AND CORING PROGRAM:

Drill stem tests will be made when drilling time, samples, and other data indicate a test is warranted.

It is planned that a gamma ray compensated neutron-density with caliper and a gamma ray dual laterolog will be run when total depth is reached.

No coring is planned for this well.

9. ABNORMAL PRESSURES, TEMPERATURES OR HYDROGEN SULFIDE GAS:

None Anticipated.

10. ANTICIPATED STARTING DATE:

It is planned that operations will commence on approval of this application, with drilling and completion operations lasting about 30 days.

SUN-FEDERAL ROSS DRAWING #1
SE 13, T26S-R30E
EDDA COUNTY, NEW MEXICO
EXHIBIT "A"

REEVES CO. LOVING COUNTY

