

UNITED STATES
DEPARTMENT OF THE INTERIOR
BUREAU OF LAND MANAGEMENT

APPLICATION FOR PERMIT TO DRILL, DEEPEN, OR PLUG BACK

1a. TYPE OF WORK

DRILL ☒

DEEPEN ☐

PLUG BACK ☐

b. TYPE OF WELL

OIL
WELL ☒

GAS
WELL ☐

OTHER

SINGLE
ZONE ☐

MULTIPLE
ZONE ☐

2. NAME OF OPERATOR

Manzano Oil Corporation

RECEIVED

3. ADDRESS OF OPERATOR

P. O. Box 2107 Roswell, NM 88202

4. LOCATION OF WELL (Report location clearly and in accordance with any State requirements.)

At surface

1880' FSL & 560' FEL

At proposed prod. zone

SAME

SEP 01 '88

O. C. D.
ARTESIA, OFFICE

14. DISTANCE IN MILES AND DIRECTION FROM NEAREST TOWN OR POST OFFICE*

7 miles south of Loco Hills, NM

15. DISTANCE FROM PROPOSED*

LOCATION TO NEAREST
PROPERTY OR LEASE LINE, FT.
(Also to nearest drlg. unit line, if any)

560'

16. NO. OF ACRES IN LEASE

1751.53

17. NO. OF ACRES ASSIGNED
TO THIS WELL

80

18. DISTANCE FROM PROPOSED LOCATION*

TO NEAREST WELL, DRILLING, COMPLETED,
OR APPLIED FOR, ON THIS LEASE, FT..

1,424'

19. PROPOSED DEPTH

8350'

20. ROTARY OR CABLE TOOLS

Rotary

21. ELEVATIONS (Show whether DF, RT, GR, etc.)

3454' GL

22. APPROX. DATE WORK WILL START*

Sept. 10, 1988

23.

PROPOSED CASING AND CEMENTING PROGRAM

SIZE OF HOLE	SIZE OF CASING	WEIGHT PER FOOT	SETTING DEPTH	QUANTITY OF CEMENT
17 1/2"	13 3/8"	54.5#	400'	350 sx "C" circulated
12 1/4"	8 5/8"	32 #	2100'	1350 sx circulated
7 7/8"	5 1/2"	17 & 20#	8350'	350 sx 50/50 poz

Mud Program:

0' - 400' Spud mud with native mud.
400' - 2950' Brine water native mud, 9-9.5 ppg, Vis. 30-35, no W/L control.
2950' - 7000' Fresh water mud, 9-9.5 ppg, Vis. 30-35, no W/L control.
7000' - 8350' Cut brine water mud, 9-9.5 ppg, Vis. 30-35, W/L 20 cc or less.

BOP Program:

A 3,000 psi Series 900 Shaffer double hydraulic operated BOP will be used and tested daily. See Exhibit "E".

IN ABOVE SPACE DESCRIBE PROPOSED PROGRAM: If proposal is to deepen or plug back, give data on present productive zone and proposed new productive zone. If proposal is to drill or deepen directionally, give pertinent data on subsurface locations and measured and true vertical depths. Give blowout preventer program, if any.

24.

Agent for:

SIGNED

[Signature]

TITLE

Manzano Oil Corporation

DATE

August 11, 1988

(This space for Federal or State office use)

PERMIT NO.

APPROVAL DATE

APPROVED BY

[Signature]

TITLE

AREA MANAGER

DATE

8-31-88

CONDITIONS OF APPROVAL, IF ANY:

*See Instructions On Reverse Side

Title 18 U.S.C. Section 1001, makes it a crime for any person knowingly and willfully to make to any department or agency of the United States any false, fictitious or fraudulent statements or representations as to any matter within its jurisdiction.

All distances must be from the outer boundaries of the Section.

Operator Manzano Oil Corporation		Lease Elliott Federal		Well No. 4
Unit Letter I	Section 30	Township 18 South	Range 30 East	County Eddy
Actual Footage Location of Well: 1880 feet from the South line and 560 feet from the East line				
Ground Level Elev. 3454	Producing Formation Bone Spring	Pool UND. Santo Nino-Bone Spring	Dedicated Acreage: 80 Acres	

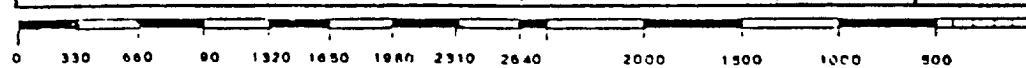
1. Outline the acreage dedicated to the subject well by colored pencil or hachure marks on the plat below.
2. If more than one lease is dedicated to the well, outline each and identify the ownership thereof (both as to working interest and royalty).
3. If more than one lease of different ownership is dedicated to the well, have the interests of all owners been consolidated by communitization, unitization, force-pooling, etc?

☐ Yes ☐ No If answer is "yes," type of consolidation _____

If answer is "no," list the owners and tract descriptions which have actually been consolidated. (Use reverse side of this form if necessary.) _____

No allowable will be assigned to the well until all interests have been consolidated (by communitization, unitization, forced-pooling, or otherwise) or until a non-standard unit, eliminating such interests, has been approved by the Division.

		NM-27279 Frank O. Elliott-Trust = 50% Edna I. Hall-Trust = 50%	



CERTIFICATION

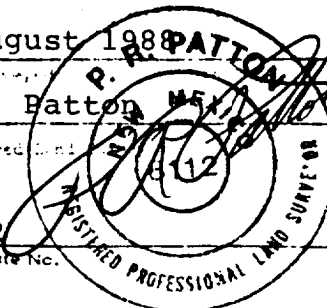
I hereby certify that the information contained herein is true and complete to the best of my knowledge and belief.

George R. Smith

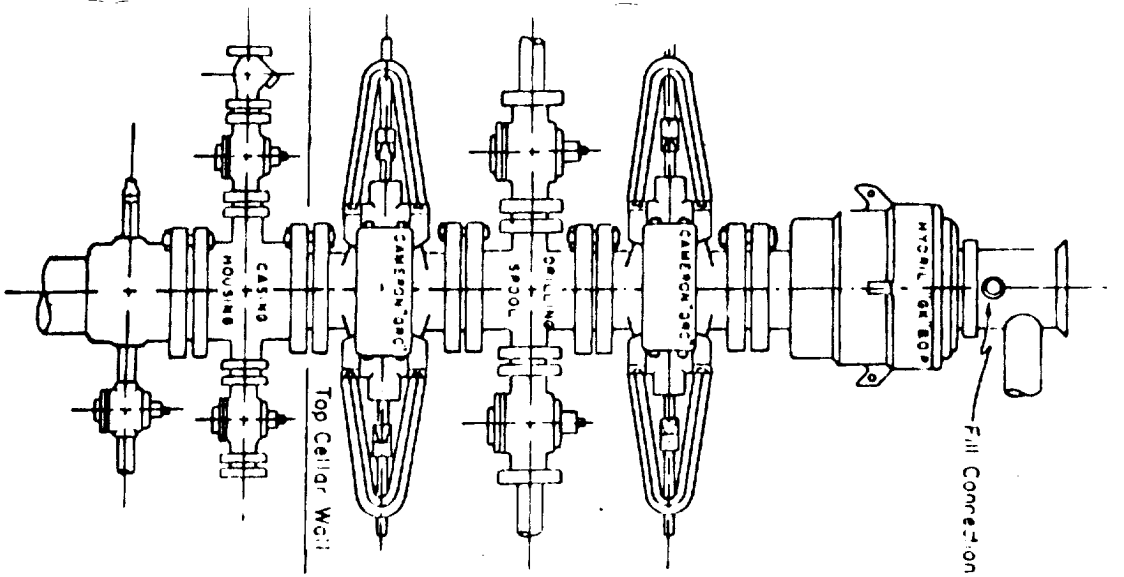
Name	George R. Smith
Position	
Agent for:	
Company	Manzano Oil Corporation
Date	August 11, 1988

I hereby certify that the well location shown on this plat was plotted from field notes of actual surveys made by me or under my supervision, and that the same is true and correct to the best of my knowledge and belief.

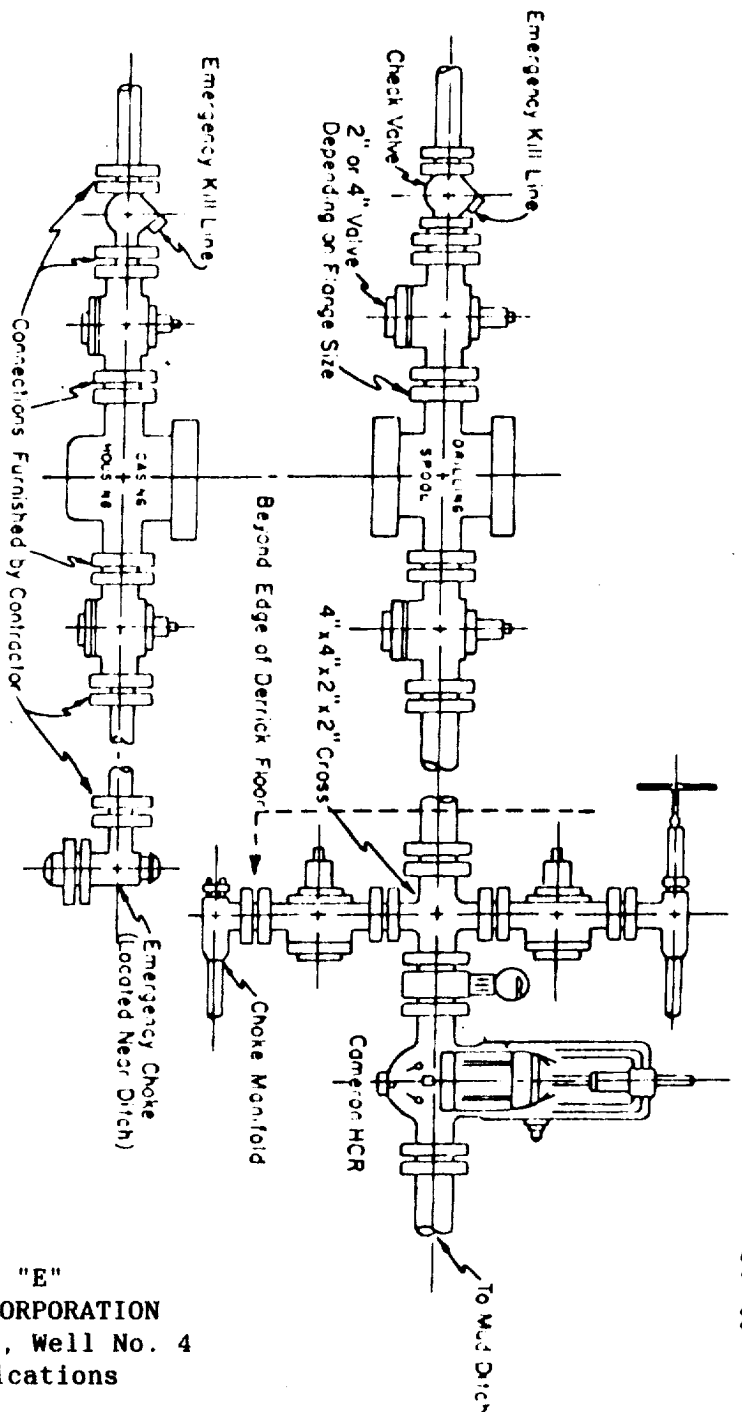
Date Surveyed	4 August 1988
Surveyor	P.R. Patton
Registered No.	8112
Certificate No.	



Blow-out Preventers hydril and choke manifold are all 900 Series



3000 PSI WORKING PRESSURE
BLOW-OUT PREVENTER HOOK-UP
See Detail of 4" Flow Line
and Choke Assembly



Minimum assembly for 3000 PSI working pressure will consist of three preventers.

3000 PSI WORKING PRESSURE
KILL, CHOKE, AND FILL CONNECTIONS

DETAIL OF 4" FLOW LINE CHOKE ASSEMBLY

EXHIBIT "E"
MANZANO OIL CORPORATION
ELLIOTT Federal, Well No. 4
BOP Specifications

APPLICATION FOR DRILLING

MANZANO OIL CORPORATION
Elliott Federal, Well No. 4
1880' FSL & 560' FEL, Sec. 30-T18S-R30E
Eddy County, New Mexico
Lease No.: NM-27279
(Development Well)

In conjunction with Form 3160-3, Application for Permit to Drill subject well, Manzano Oil Corporation submits the following items of pertinent information in accordance with BLM requirements:

1. The geologic surface formation is recent Permian with quaternary alluvium and other surficial deposits.
2. The estimated tops of geologic markers are as follows:

Rustler	450'	San Andres	3410'
Base of Salt	1275'	1st Bone Springs	7150'
Queen	2550'	2nd Bone Springs	7860'
N. Benson pay	3050'	T.D.	8350'
3. The estimated depths at which water, oil or gas formations are anticipated to encountered:

Water: Fresh water from 100' to 300'.

Oil: Possible in Bone Spring: 7175' - 7375'
7875' - 7975'
8225' - 8275'

Gas: Possible in Bone Springs.
4. Proposed Casing Program: See Form 3160-3.
5. Proposed Control Equipment: See Form 3160-3 and Exhibit "E".
6. Mud Program: See Form 3160-3.
7. Auxiliary Equipment: Blowout preventer, gas detector, kelly cock, pit level monitor, flow sensors and stabbing valve.
8. Testing, Logging, and Coring Program:

Drill Stem Tests: One possible in the Bone Springs.

Logging: Surface casing to T.D.: Gamma Ray.
Inter. Casing to T.D.: DLL, CNL-FDC, MSFL

Coring: None planned.
9. No abnormal pressures or temperatures are anticipated. In the event abnormal pressures are encountered the proposed mud program will be modified.
10. Anticipated starting date: September 10, 1988.
Anticipated completion of drilling operations: Approximately 35 days.

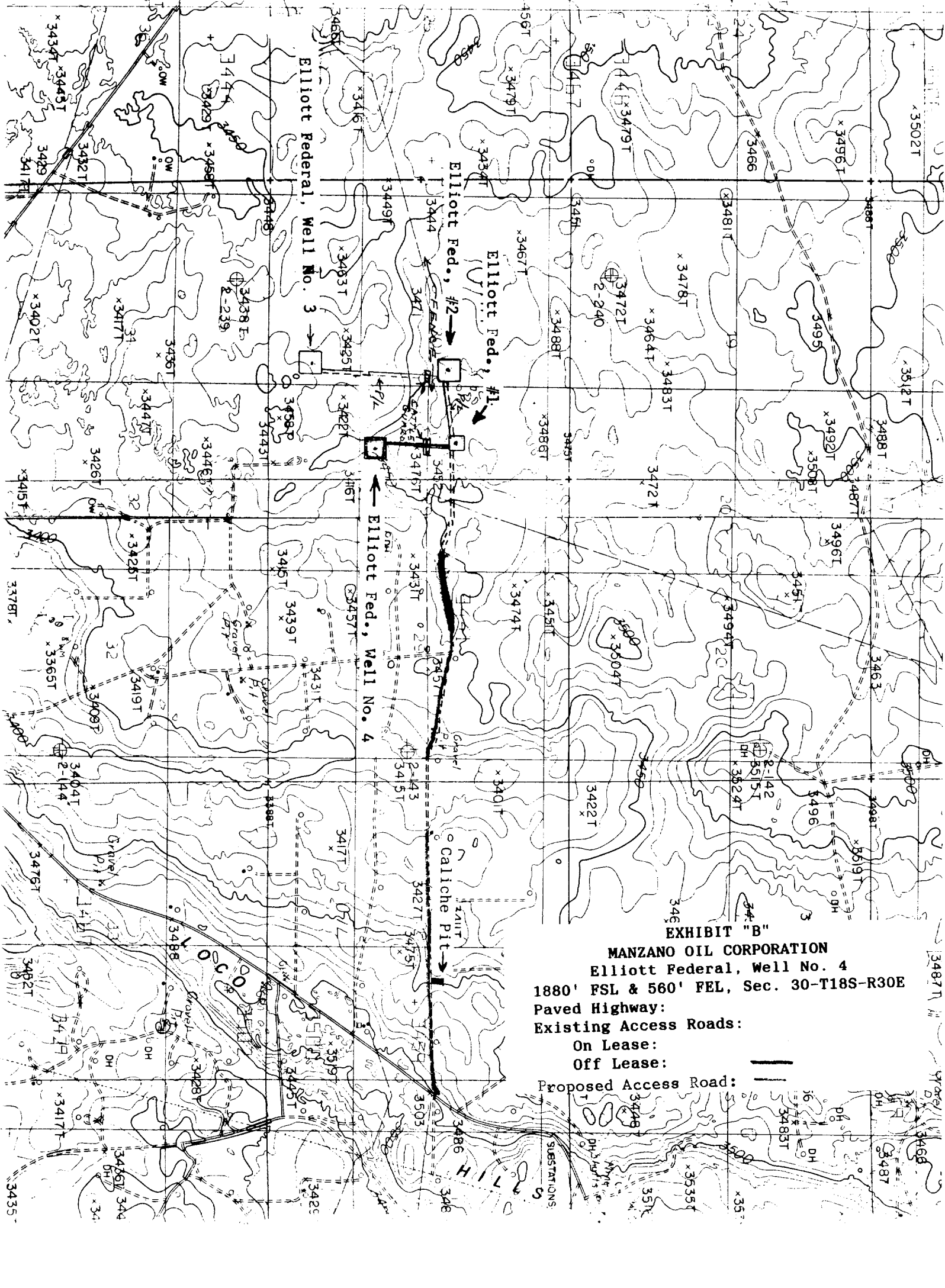
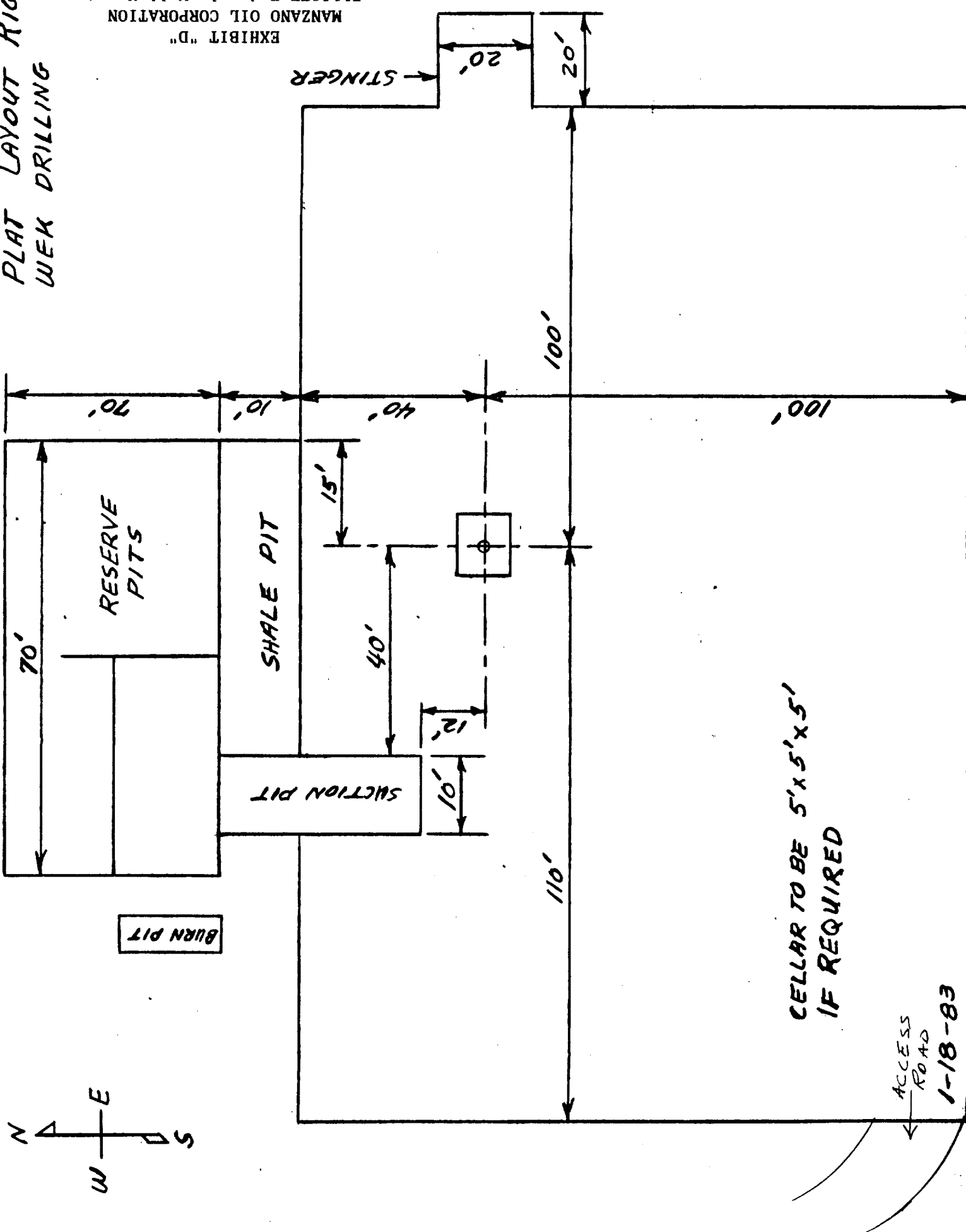


EXHIBIT "B"
MANZANO OIL CORPORATION
Elliott Federal, Well No. 4
1880' FSL & 560' FEL, Sec. 30-T18S-R30E
Paved Highway:
Existing Access Roads:
On Lease:
Off Lease:
Proposed Access Road:

PLAT LAYOUT RIG 1
WEK DRILLING

MANZANO OIL CORPORATION
ELLIOTT Federal, Well No. 4
Rig Layout
EXHIBIT "D"



CELLAR TO BE 5'x5'x5'
IF REQUIRED

ACCESS ROAD
1-18-83

