

UNITED STATES
DEPARTMENT OF THE INTERIOR
GEOLOGICAL SURVEY

SUBMIT IN TRIPLICATE*
(Other instructions on reverse side)

Form approved.
Budget Bureau No. 42-R1425.

RECEIVED
30-015-26039

APPLICATION FOR PERMIT TO DRILL, DEEPEN, OR PLUG BACK

1a. TYPE OF WORK

DRILL ☒

DEEPEN ☐

PLUG BACK ☐

b. TYPE OF WELL

OIL WELL ☒

GAS WELL ☐

OTHER

SINGLE ZONE ☒

RECEIVED

2. NAME OF OPERATOR

Bass Enterprises Production Co.

3. ADDRESS OF OPERATOR

P O Box 2760 Midland TX 79702

DEC 16 '88

4. LOCATION OF WELL (Report location clearly and in accordance with any State requirements.)
At surface

660' FNL & 1980' FEL, Sec.30, T25S-R31E, Eddy County, New Mexico

At proposed prod. zone

same

14. DISTANCE IN MILES AND DIRECTION FROM NEAREST TOWN OR POST OFFICE*

+ 40 miles NE Jal, New Mexico

15. DISTANCE FROM PROPOSED*

LOCATION TO NEAREST
PROPERTY OR LEASE LINE, FT.
(Also to nearest drlg. unit line, if any)

660'

16. NO. OF ACRES IN LEASE

1,560.6

17. NO. OF ACRES ASSIGNED

TO THIS WELL 40

18. DISTANCE FROM PROPOSED LOCATION*

TO NEAREST WELL, DRILLING COMPLETED,
OR APPLIED FOR, ON THIS LEASE, FT.

+ 1 1/2 miles

19. PROPOSED DEPTH

+4,300'

20. ROTARY OR CABLE TOOLS

Rotary

21. ELEVATIONS (Show whether DF, RT, GR, etc.)

3397.8'

22. APPROX. DATE WORK WILL START*

ASAP after approval

23. PROPOSED CASING AND CEMENTING PROGRAM

SIZE OF HOLE	SIZE OF CASING	WEIGHT PER FOOT	SETTING DEPTH	QUANTITY OF CEMENT
12 1/4"	8-5/8" 24#/ft	24	1,100'	560 sx CIRCULATE
7 7/8"	5-1/2" 14#/ft	14	4,300'	125 sx

IN ABOVE SPACE DESCRIBE PROPOSED PROGRAM: If proposal is to deepen or plug back, give data on present productive zone and proposed new productive zone. If proposal is to drill or deepen directionally, give pertinent data on subsurface locations and measured and true vertical depths. Give blowout preventer program, if any.

24.

SIGNED

Troy L. Beavers

TITLE

Engineering Assistant

DATE

11-11-88

(This space for Federal or State office use)

PERMIT NO.

APPROVAL DATE

APPROVED BY

Sandra Prentiss

TITLE

LAND AND RESOURCES

DATE

12-15-88

CONDITIONS OF APPROVAL, IF ANY:

APPROVAL SUBJECT TO
GENERAL REQUIREMENTS AND
SPECIAL STIPULATIONS
ATTACHED

POST ID-1
N & API
12-23-88

MEXICO OIL CONSERVATION COMMISSION
WELL LOCATION AND ACREAGE DEDICATION PLAT

Form C-102
Supersedes C-128
Effective 1-1-65

All distances must be from the outer boundaries of the Section.

EXHIBIT "A"

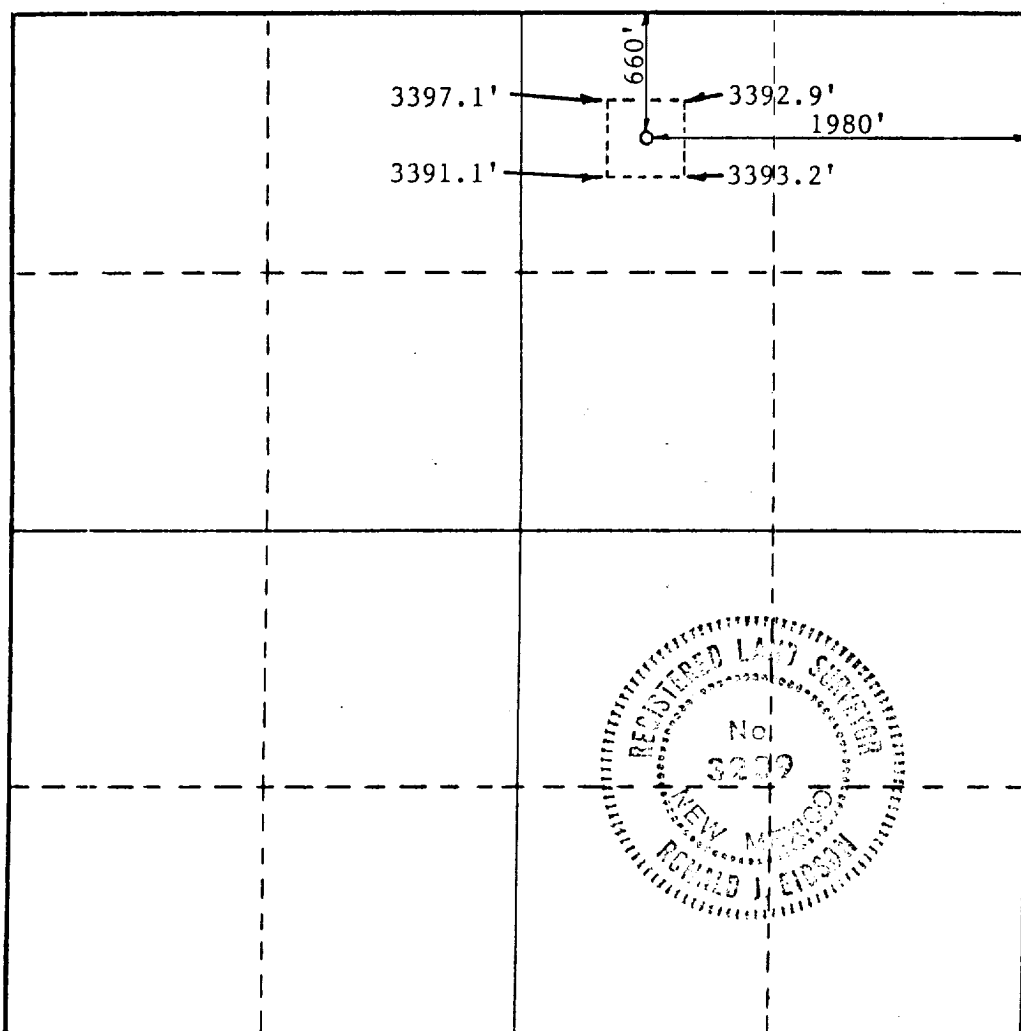
Operator BASS ENTERPRISES PRODUCTION COMPANY			Lease POKER LAKE UNIT		Well No. 70 71
Unit Letter B	Section 30	Township 25 SOUTH	Range 31 EAST	County EDDY	
Actual Footage Location of Well: <div style="display: flex; justify-content: space-between;"> 660 feet from the NORTH line and 1980 feet from the EAST line </div>					
Ground Level Elev. 3397.8'	Producing Formation Delaware	Pool Wildcat Delaware		Dedicated Acreage: 1506.6 40 Acres	

1. Outline the acreage dedicated to the subject well by colored pencil or hachure marks on the plat below.
2. If more than one lease is dedicated to the well, outline each and identify the ownership thereof (both as to working interest and royalty).
3. If more than one lease of different ownership is dedicated to the well, have the interests of all owners been consolidated by communitization, unitization, force-pooling, etc?

☒ Yes ☐ No If answer is "yes," type of consolidation Unitization

If answer is "no," list the owners and tract descriptions which have actually been consolidated. (Use reverse side of this form if necessary.) _____

No allowable will be assigned to the well until all interests have been consolidated (by communitization, unitization, forced-pooling, or otherwise) or until a non-standard unit, eliminating such interests, has been approved by the Commission.



CERTIFICATION

I hereby certify that the information contained herein is true and complete to the best of my knowledge and belief.

Troy L. Bevers
Name

Troy L. Bevers

Position

Engineering Assistant

Company Bass Enterprises
Production Co.

Date

November 11, 1988

I hereby certify that the well location shown on this plat was plotted from field notes of actual surveys made by me or under my supervision, and that the same is true and correct to the best of my knowledge and belief.

Date Surveyed

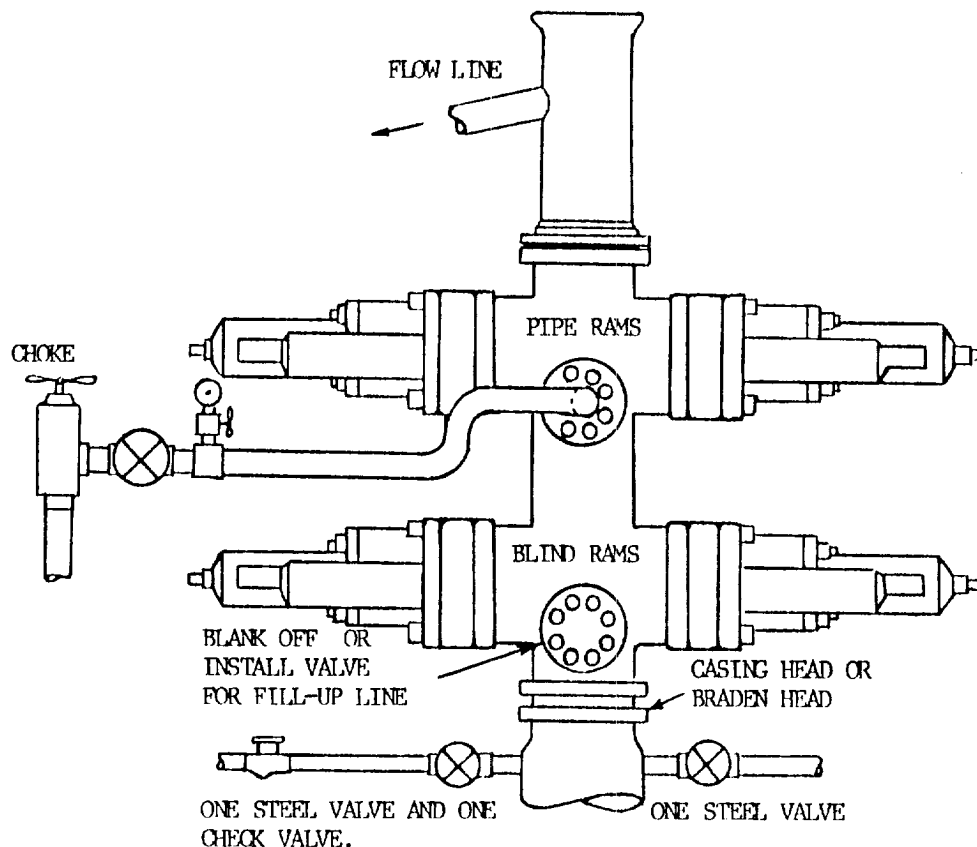
NOVEMBER 4, 1988

Registered Professional Engineer
and/or Land Surveyor

Ronald J. Eidson

Certificate No. JOHN W. WEST, 676

RONALD J. EIDSON, 3239



THE FOLLOWING CONSTITUTE MINIMUM BLOWOUT PREVENTER REQUIREMENTS

- A. One double gate blowout preventer with lower rams blind and upper rams for pipe, all hydraulically controlled.
- B. Opening on preventers between rams to be flanged, studded or clamped and at least two inches diameter.
- C. All connections from operating manifold to preventers to be all steel hose or tube a minimum of one inch in diameter.
- D. The available closing pressure shall be at least 15% in excess of that required with sufficient volume to operate (close, open, and re-close) the preventers.
- E. All connections to and from preventers to have a pressure rating equivalent to that of the BOP's.
- F. Manual controls to be installed before drilling cement plug.
- G. Valve to control flow through drill pipe to be located on rig floor.
- H. Choke may be either positive or adjustable. Choke spool may be used between rams.

EIGHT POINT PROGRAM

NAME OF WELL: POKER LAKE UNIT #70

LOCATION: 660' FNL & 1980' FEL, SECTION 30, T25S, R31E, EDDY CO. NEW MEXICO

POINT 1: ESTIMATED FORMATION TOPS

See Point 2 below.

POINT 2: Water, Oil, Gas and/or Mineral Bearing Formations

Anticipated Formation Tops: Estimated KB 3403'

Estimated Graded GL 3391'

<u>FORMATION</u>	<u>ESTIMATED SUBSEA TOP</u>	<u>ESTIMATED TOP FROM KB</u>	<u>BEARING</u>
T/Rustler	+2360'	1043'	water
T/Salt	+2035'	1368'	-
B/Salt	- 515'	3918'	-
T/Lamar	- 735'	4138'	-
T/Ramsey	- 767'	4170'	Oil/Gas
T/Ramsey			
Reservoir Sand	- 783'	4186'	Oil/Gas
TD	- 897'	4300'	Oil/Gas

POINT 3: CASING PROGRAM

<u>TYPE</u>	<u>INTERVALS</u>	<u>PURPOSE</u>	<u>CONDITION</u>
16"	0 -40	Conductor	Contractor's Discretion
8 5/8" 24#/ft K-55 ST&C	0-1100'	Surface	New and/or Used
5 1/2" 14#/ft K-55 ST&C	0-4300'	Production	New

POINT 4: PRESSURE CONTROL EQUIPMENT (See attached)

A BOP equivalent to a BEPCo II (copy attached), furnished by the contractor will be nipped up on the surface casinghead. The entire BOP stack, choke, kill lines, kelly cock, kelly safety valve, inside blowout preventer, etc. will be tested to the rated working pressure of the preventer or casinghead, whichever is less. Both a low pressure (200 psi) and a working pressure test will be required:

- a) Upon initial installation
- b) After any component changes

A function test to insure that the preventers are operating correctly will be performed on each trip, but not more than once per day.

POINT 5: MUD PROGRAM

<u>Depth</u>	<u>Weight</u>	<u>F V</u>	<u>P V</u>	<u>YP</u>	<u>Fluid Loss</u>	<u>Ph</u>
0'-1100'	8.4-8.8	35-40	NC	NC	NC	NC

Drill the Surface hole using a 12 1/4" bit and FW spud mud. Maintain a funnel viscosity of 35-40 sec for adequate hole cleaning. Maintain a drilling weight of 8.4-8.8 ppg. Use ground paper to prevent seepage and filter cake buildup through FW sands. If circulation is lost, drill blind to casing point.

<u>Depth</u>	<u>Weight</u>	<u>F V</u>	<u>P V</u>	<u>YP</u>	<u>Fluid Loss</u>	<u>Ph</u>
1100'-4100'	9.9-10.1	28-29	NC	NC	NC	NC

Drill out the surface casing with clear BW. Run paper and/or gel sweeps for adequate hole cleaning.

<u>Depth</u>	<u>Weight</u>	<u>F V</u>	<u>P V</u>	<u>YP</u>	<u>Fluid Loss</u>	<u>Ph</u>
4100'-TD	9.9-10.1	34-40	NC	NC	10 cc	9-10

Mud up @ 4100' with salt gel and starch. Bring API fluid loss down to 10 cc and viscosity up to 34-40 sec for evaluation of pay sand and a possible DST.

POINT 6: TECHNICAL STAGES OF OPERATION**A: TESTING**

It is anticipated that a DST will be run in the top 10' of the objective sand.

B: LOGGING

<u>Run No.</u>	<u>Tool</u>	<u>Interval</u>	<u>Status</u>
1	BHCS with caliper and GR	TD to Surface Csg. TD to Surface	Definite Definite

C: CORING

No cores are anticipated on this well.

D. CEMENT

<u>Interval</u>	<u>Amount</u>	<u>Fill</u>	<u>Type</u>	<u>Gal/sx</u>	<u>PPG</u>	<u>CU.Ft/sk</u>
Surface Lead	*360 sx(100% excess)	495'	Lite w/1/4#/sk LCM	9.9	12.7	1.84
Tail	200 sx	605'	Class "C" Neat with 1/4#/sk LCM	6.3	14.8	1.32

*Cement must circulate or be topped off.

Production	125 sx(25% excess)	762'	Class "C" neat	6.3	14.8	1.32
------------	--------------------	------	----------------	-----	------	------

POINT 7: ANTICIPATED RESERVOIR CONDITIONS

No abnormal pressures or temperatures are anticipated.

POINT 8: AUXILIARY EQUIPMENT

A: Auxiliary Equipment

A Kelly cock will be utilized and a full opening stab in valve will be on the rig floor.

B: Anticipated Starting Date

As Soon As Possible after Approval.

C. SURFACE OWNERSHIP:

The well site and new access road is on Federally owned land.

D. Well signs will be posted at the drilling site.

E. Open pits:

All pits containing liquid or mud will be fenced.

POINT 9: OPERATOR'S FIELD REPRESENTATIVE

(Field personnel responsible for compliance with development plan for surface use).

DRILLING

John Smitherman
Box 2760
Midland, Texas 79702
(915) 688-3300

PRODUCTION

Abe Collins
P O Box 889
Monahans, Texas 79756-0889
(915) 561-8573

John Smitherman
Box 2760
(915) 688-3300

POINT 10: CERTIFICATION

I hereby certify that I, or persons under my direct supervision have inspected the proposed drill site and access route; that I am familiar with the conditions which currently exist; that the statements made in the plan are, to the best of my knowledge, true and correct; and that the work associated with operations proposed herein will be performed by Bass Enterprises production Co. and its contractors and subcontractors in conformity with this plan and the terms and conditions under which it is approved. This statement is subject to the provisions of 18 U.S.C. 1001 for the filing of a false statement.

November 14, 1988
Date

Troy L. Bevers
Troy L. Bevers

TLB/ea

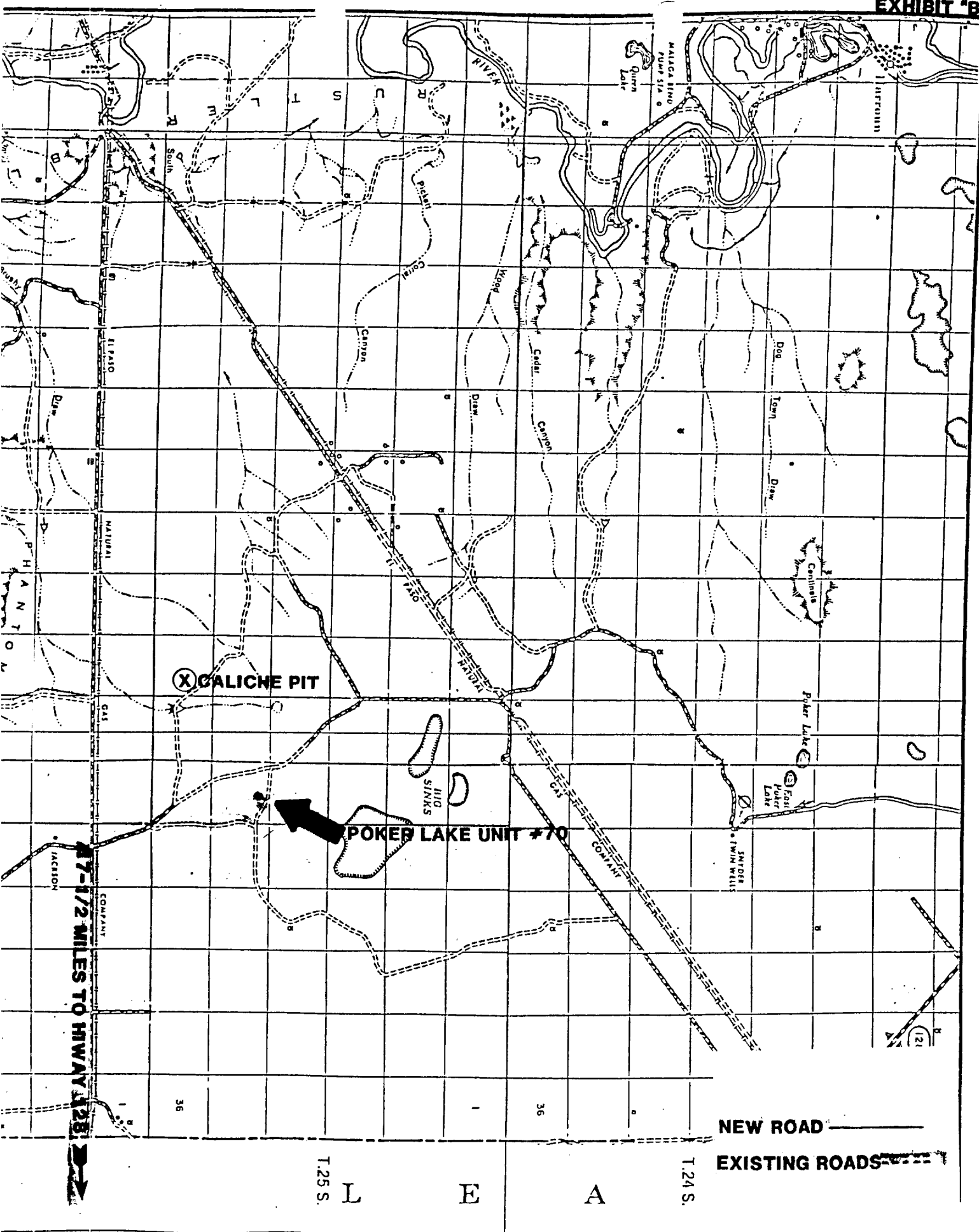


EXHIBIT "D"

