



# United States Department of the Interior

BUREAU OF LAND MANAGEMENT  
ROSWELL DISTRICT OFFICE  
P.O. BOX 1397  
ROSWELL, NEW MEXICO 88201

TAKE  
PRIDE IN  
AMERICA

NM-0144698  
3162.41 (065)

RECEIVED

MAR 22 1989

O.C.D.  
ARTESIA OFFICE

The Petroleum Corporation of Delaware  
3131 Turtle Creek Blvd., Suite 400  
Dallas, Texas 75219-5415

Gentlemen:

Your application for Permit to Drill the Superior Federal No. 1 well in the SW $\frac{1}{4}$ SW $\frac{1}{4}$  sec. 1, T. 20 S., R. 29 E., Eddy County, New Mexico, lease NM-0144698, to a depth of 12,100 feet to test the Morrow formation in the oil-potash area is hereby approved as amended by stipulations attached to the application.

One copy of the application is returned herewith. Please notify the Bureau of Land Management office checked on the attached special stipulation, in sufficient time for a representative to witness all cementing operations.

Approval of this application does not warrant or certify that the applicant holds legal or equitable title to those rights in the subject lease which would entitle the applicant to conduct operations thereon.

Sincerely,

Francis R. Cherry, Jr.  
District Manager

1 Enclosure

cc:

NMOCD - Artesia - 2

UNITED STATES  
DEPARTMENT OF THE INTERIOR  
BUREAU OF LAND MANAGEMENT

RECEIVED

FIELD DESIGNATION AND SERIAL NO.

NM-0144698

6. IF INDIAN, ALLOTTEE OR TRIBE NAME

10 55 AM '89

7. UNIT AGREEMENT NAME

Superior-Federal

8. FARM OR LEASE NAME

Superior-Federal

9. WELL NO.

1-1

10. LAND AND POOL, OR WILDCAT

East Burton Flat (Morrow)

11. SEC., T., R., M., OR BLK.  
AND SURVEY OR AREA

Sec. 1, T-20-S, R-29-E

12. COUNTY OR PARISH

Eddy

13. STATE

New Mexico

APPLICATION FOR PERMIT TO DRILL, DEEPEN, OR PLUG BACK

1a. TYPE OF WORK

DRILL ☒

DEEPEN ☐

PLUG BACK ☐

b. TYPE OF WELL

OIL  
WELL ☐

GAS  
WELL ☒

OTHER

SINGLE  
ZONE ☐

MULTIPLE  
ZONE ☐

2. NAME OF OPERATOR

The Petroleum Corporation of Delaware

3. ADDRESS OF OPERATOR

3131 Turtle Creek Blvd. Ste 400, Dallas, Texas 75219-5415

4. LOCATION OF WELL (Report location clearly and in accordance with any State requirements.)\*

At surface

Unit Letter M. 660' FSL and 660' FWL

At proposed prod. zone

14. DISTANCE IN MILES AND DIRECTION FROM NEAREST TOWN OR POST OFFICE\*

18 Miles E-NE of Carlsbad, New Mexico

15. DISTANCE FROM PROPOSED\*

LOCATION TO NEAREST  
PROPERTY OR LEASE LINE, FT.  
(Also to nearest drlg. unit line, if any)

660'

16. NO. OF ACRES IN LEASE

1743.54

17. NO. OF ACRES ASSIGNED

TO THIS WELL  
320 S/2 Sec. 1

18. DISTANCE FROM PROPOSED LOCATION\*  
TO NEAREST WELL, DRILLING, COMPLETED,  
OR APPLIED FOR, ON THIS LEASE, FT.

None

19. PROPOSED DEPTH

12,100

20. ROTARY OR CABLE TOOLS

Rotary

21. ELEVATIONS (Show whether DF, RT, GR, etc.)

3297.0

22. APPROX. DATE WORK WILL START\*

March 15, 1989

23.

PROPOSED CASING AND CEMENTING PROGRAM

SIZE OF HOLE	SIZE OF CASING	WEIGHT PER FOOT	SETTING DEPTH	QUANTITY OF CEMENT
15" or 17 1/2"	11 3/4" or 13 3/8"	42# or 62#	350'	Circ. to surface
11" od 12 1/4"	8 5/8"	24# & 32#	3200'	Circ. to surface
7 7/8"	5 1/2"	17# & 20#	12,100'	500 SX., Exact quantity to be determined from caliper

Adequate BOP to be installed from 350' to TD.

Mud program outlined in Exhibit F.

Subject to  
Like Approval  
by State

POST ID-1  
N & APE  
3-31-89

IN ABOVE SPACE DESCRIBE PROPOSED PROGRAM: If proposal is to deepen or plug back, give data on present productive zone and proposed new productive zone. If proposal is to drill or deepen directionally, give pertinent data on subsurface locations and measured and true vertical depths. Give blowout preventer program, if any.

24.

SIGNED

Thomas P. Anderson

TITLE

OPERATIONS ENGINEER

DATE

2/10/89

(This space for Federal or State office use)

PERMIT NO.

APPROVAL DATE

3-22-89

APPROVED BY

TITLE

DATE

CONDITIONS OF APPROVAL, IF ANY:

\*See Instructions On Reverse Side

Title 18 U.S.C. Section 1001, makes it a crime for any person knowingly and willfully to make to any department or agency of the United States any false, fictitious or fraudulent statements or representations as to any matter within its jurisdiction.

**N MEXICO OIL CONSERVATION COMMISSION  
WELL LOCATION AND ACREAGE DEDICATION PLAT**

Form C-102  
Supersedes C-128  
Effective 1-1-65

All distances must be from the outer boundaries of the Section.

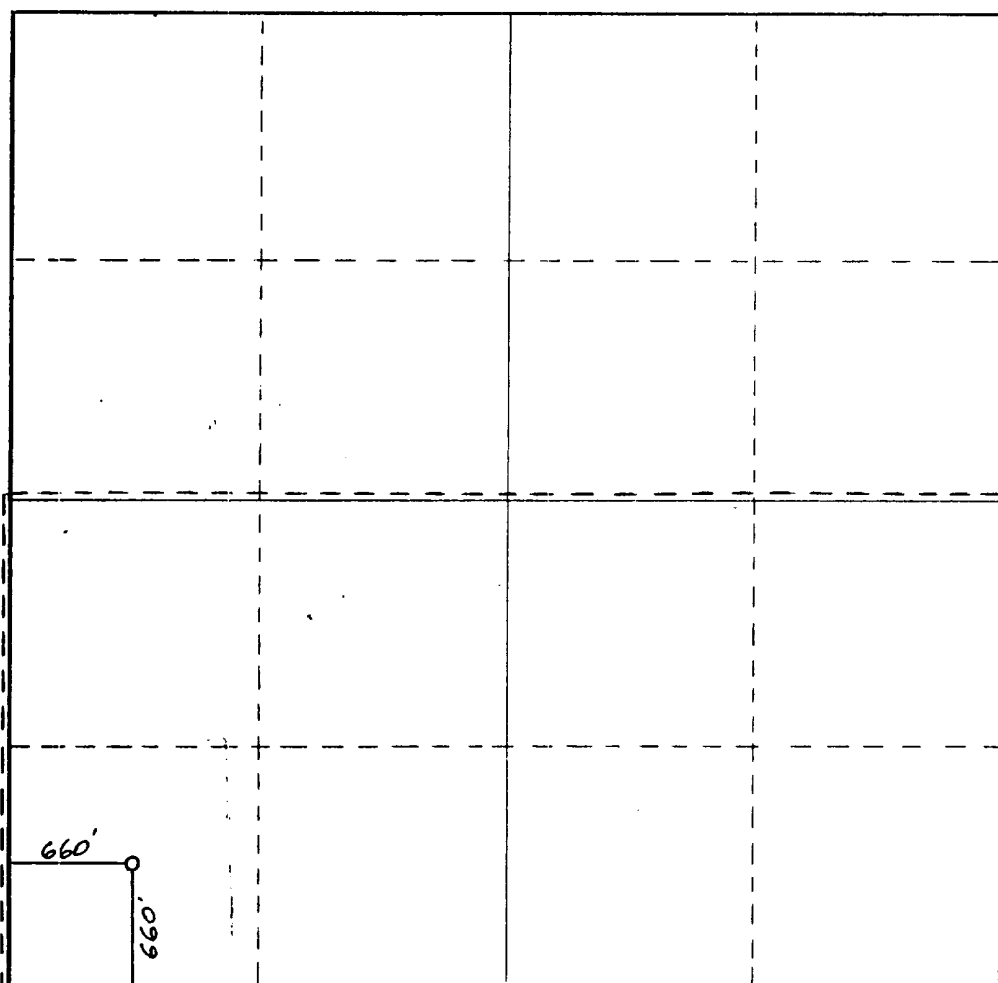
Operator <b>The Petroleum Corp. of Delaware</b>			Lease <b>Superior Federal</b>		Well No. <b>1</b>
Unit Letter <b>M</b>	Section <b>1</b>	Township <b>20 South</b>	Range <b>29 East</b>	County <b>Eddy County, N.M.</b>	
Actual Footage Location of Well: <b>660</b> feet from the <b>West</b> line and <b>660</b> feet from the <b>South</b> line					
Ground Level Elev. <b>3297.</b>	Producing Formation <b>Morrow</b>		Pool <b>East Burton Flat (Morrow)</b>		Dedicated Acreage: <b>320</b> Acres

1. Outline the acreage dedicated to the subject well by colored pencil or hachure marks on the plat below.
2. If more than one lease is dedicated to the well, outline each and identify the ownership thereof (both as to working interest and royalty).
3. If more than one lease of different ownership is dedicated to the well, have the interests of all owners been consolidated by communitization, unitization, force-pooling, etc?

☐ Yes    ☐ No    If answer is "yes," type of consolidation N/A

If answer is "no," list the owners and tract descriptions which have actually been consolidated. (Use reverse side of this form if necessary.) \_\_\_\_\_

No allowable will be assigned to the well until all interests have been consolidated (by communitization, unitization, forced-pooling, or otherwise) or until a non-standard unit, eliminating such interests, has been approved by the Commission.



**CERTIFICATION**

*I hereby certify that the information contained herein is true and complete to the best of my knowledge and belief.*

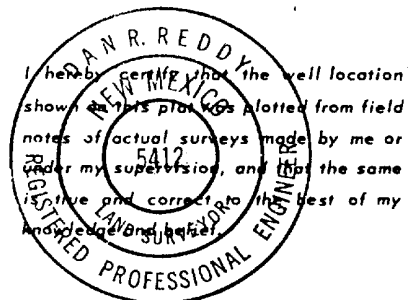
*Ronald P. Henderson*

Name  
**R. P. Henderson**

Position  
**Operations Engineer**

Company  
**The Petroleum Corp.**

Date  
**February 3, 1989**



Date Surveyed  
**January 23, 1989**

Registered Professional Engineer  
and/or Land Surveyor

*Dan R. Reddy*

Certificate No.  
**NM PE&LS NO. 5412**

APPLICATION FOR DRILLING  
The Petroleum Corporation  
Superior Federal Well No. 14-1  
660' FSL and 660'FWL  
Section 1-T20S-R29E  
Eddy County, New Mexico

In conjunction with Form 3160-3, Application for Permit to Drill, subject well in Section 1, Township 20 South, Range 29 East, Eddy County, New Mexico, The Petroleum Corporation submits the following ten items of pertinent information in accordance with U.S.G.S. requirements:

1. The geologic surface formation is Alluvium and Bolson deposits.
2. The estimated tops of geologic markers are as follows:

Yates	1,400'
Seven Rivers	1,700'
Delaware	3,200'
Bone Springs	5,900'
Wolfcamp	9,600'
Strawn	10,650'
Atoka	11,000'
Morrow	11,550'
Barnett Shale	12,150'

3. The estimated depths at which anticipated water, oil or gas formations are expected to be encountered are:

Water:	At approximately 240 feet.
Oil or Gas:	Wolfcamp at approximately 9,600'
	Strawn at approximately 10,650'
	Atoka at approximately 11,000'
	Morrow at approximately 11,550'

4. Proposed casing program: See Form 3160-3 and Exhibit F (Page 2)
5. Pressure control equipment: See Form 3160-3 and Exhibit E
6. Mud Program: See Exhibit F (Page 3)
7. Testing, logging and coring programs: See Exhibit F (Page 2)
8. No abnormal pressures or temperatures are anticipated.
9. Anticipated starting date: As soon as possible.

THE PETROLEUM CORPORATION  
of Delaware  
3131 Turtle Creek Blvd.  
Suite 400  
Dallas, Texas 75219

The Petroleum Corporation  
Superior Federal Well No. 14-1  
660' FSL and 660' FWL  
Section 1-T20S-R29E  
Eddy County, New Mexico

DRILLING PROGRAM

SUPERIOR FEDERAL NO. 14-1  
Section 1, T-20-S, R-29-E  
Eddy County, New Mexico

LOCATION	660 feet FSL and 660' feet FWL of Section 1, T-20-S, R-29-E, Eddy County, New Mexico	
ELEVATION	3,297 feet G. L.	
GENERAL	Drill a 15 inch hole to approximately 350 feet, and run 11-3/4 inch casing Drill a 11 inch hole to approximately 3,200 feet and run 8-5/8 inch casing Drill a 7-7/8 inch hole to approximately 12,100 feet for total depth	
LOCATION	This will be located on a federal lease and the Bureau of Land Management must be notified prior to any dirt work being done. Also, prior to cementing any casing the BLM office in Carlsbad must be notified (505/887-6544). The man in this office is Vince Balderaz. They also require a slush pit and burn pit in addition to the reserve pit. The BLM should also be notified prior to testing the BOP's just before drilling the Wolfcamp formation.	
MUD PROGRAM	15 inch hole	Spud mud
	11 inch hole	Brine water, circulating the reserve pit
	7-7/8 inch hole	Drill with fresh water until reaching 10,000 feet if hole condition will permit; then discontinue circulating reserve pit and use brine water; at 10,000 feet add polymer for control; drill to total depth

Drilling Program  
Superior Federal No. 14-1  
Page 2

The Petroleum Corporation  
Superior Federal Well No. 14-1  
660' FSL and 660' FWL  
Section 1-T20S-R29E  
Eddy County, New Mexico

ANTICIPATED FORMATIONS  
AND  
WELL DEPTHS

Top of Yates	1,400'
Top of Seven Rivers	1,700'
Top of Delaware	3,200'
Top of Bone Springs	5,900'
Top of Wolfcamp	9,600'
Top of Strawn	10,650'
Top of Atoka	11,000'
Top of Morrow	11,550'
Top of Barnett Shale	12,150'

Open hole drill stem tests will be made of all significant shows of hydrocarbons dependent upon satisfactory hole conditions

SAMPLE PROGRAM

Ten foot (10') samples from base of intermediate casing to total depth

ELECTRICAL LOGGING  
PROGRAM

Dual Laterolog will be run from 3,200' to total depth

Compensated Neutron, Density Log and Borhole Compensated Sonic over all potential zones

SAFETY EQUIPMENT

PVT and flow line sensor from 3,200' to total depth. SWACO hydraulic choke from 3,200' to total depth. Rotating head, hydril and double ram preventors from 3,200' to total depth. Hydril and double ram preventors from 400 feet to 3,200'. Blow-out preventors to be pressure tested by Yellow Jacket prior to drilling into the Wolfcamp formation.

CASING PROGRAM

11-3/4 inch	350 feet of 47#/ft, K-55, ST&C
8-5/8 inch	2,200 feet of 24#/ft. K-55, ST&C
	1,000 feet of 32#/ft, K-55, ST&C
5-1/2 inch	1,000 feet of 17#/ft, N-80, Buttress
	9,200 feet of 17#/Ft. N-80, LT&C
	1,900 feet of 20#/ft. N-80,LT&C

THE PETROLEUM CORPORATION  
Of Delaware  
3131 Turtle Creek Blvd.  
Suite 400  
Dallas, Texas 75219

The Petroleum Corporation  
Superior Federal Well No. 14-1  
660' FSL and 660' FWL  
Section 1-T20S-R29E  
Eddy County, New Mexico

PROPOSED DRILLING FLUIDS PROGRAM

Superior Federal No. 14-1  
Section 1, T-20-S, R-29-E  
Eddy County, New Mexico

<u>DEPTH</u>	<u>DRILLING FLUIDS</u>
Surface to 350 feet	Spud mud with fresh water gel and lime; 9.2#/gal; 28 to 32 viscosity
Run 11-3/4 or 13-3/8 inch casing set at 350 feet	
350 feet to 3,200 feet	Brine water with salt gel and lost circulation material as required; 9.3#/gal; 28 to 30 viscosity
Run 8-5/8 inch casing set at 3,200 feet	
3,200 feet to 10,000 feet	Drill out with existing brine water system, circulating reserve pit, maintaining chlorides at 90,000 ppm. Control ph with lime. Mud weight 9.2-9.4#/gal, viscosity 28-32, ph 9-10.
10,000 feet to 12,100 feet	Discontinue reserve pit circulation, return to working pits, mud up with salt gel, lower water loss to 6 cc before drilling the Morrow formation. Water loss to be controlled by increasing oil content. 9.4-9.7#/gal 38-46 viscosity.

MULTI-POINT SURFACE USE AND OPERATIONS PLAN  
The Petroleum Corporation  
Superior Federal Well No. 14-1  
660' FSL and 660' FWL  
Section 1-T20S-R29E  
Eddy County, New Mexico  
(Development Well)

The plan is submitted with Form 3160-3, Application for Permit to Drill, covering the above described well. The purpose of this plan is to describe the location of the proposed well, the proposed construction activities and operations plan, the magnitude of necessary surface disturbance involved, and the procedures to be followed in rehabilitating the surface after completion of the operations, so that a complete appraisal can be made of the environmental effects associated with the operation.

1. EXISTING ROADS.

A. Exhibit A is a portion of BLM quad color map no. SE-24, on a scale of  $\frac{1}{2}$  inch to a mile, showing the area of the proposed wellsite and the roads in the vicinity. The location is situated approximately 18 miles northeast of Carlsbad, New Mexico, via the access road shown in red. Directions to the location are as follows:

- (1) Starting from the intersection of 62/180 east of Carlsbad and the Pecos River, proceed east on 62/180 toward Hobbs for 13.7 miles.
- (2) Turn left (north) on County Road #238 and go 2.1 miles to fork in the road.
- (3) Take right hand fork and proceed on oil road for 2.1 miles to another fork in the road.
- (4) Take right hand fork (east) and follow oil road approximately 1 mile to the Slinkard U.R. Federal #2 location pad.
- (5) Take road from northwest corner of pad to location for Superior Federal 14-1 (3000')

2. PLANNED ACCESS ROAD.

- A. The proposed new access road will be approximately 3000' from the northwest corner of the pad for the Slinkard U.R. Federal #2.
- B. The new road will be 12 feet in width (driving surface) except at the point of origin, adjacent to the existing road, at which point enough additional width will be provided to allow heavy trucks and equipment to turn.
- C. The new road will be covered with the necessary depth of caliche. The surface will be crowned, with drainage on both sides. No turnouts will be necessary.
- D. The center line of the new road has been staked and flagged, and the route of the road is clearly visible.

3. LOCATION OF EXISTING WELLS.

- A. Exhibit B shows the locations of the four (4) currently active producing wells on the lease; however, there are no active wells in the Section 1 acreage portion of the lease.



- B. Exhibit B also shows the location of the currently active production adjacent to the Section 1 acreage.

#### 4. LOCATION OF EXISTING AND/OR PROPOSED FACILITIES.

- A. In the event that the well is productive, the necessary production facilities will be installed on the drilling pad. If the well is productive of oil, a gas or diesel self-contained unit will be used to provide the necessary power. No power will be required if the well is productive of gas.

#### 5. LOCATION AND TYPE OF WATER SUPPLY.

- A. It is planned to drill the proposed well with a fresh water system. The water will be obtained from commercial sources and will be hauled to the location by truck over the existing and proposed roads shown in Exhibit A.

#### 6. SOURCE OF CONSTRUCTION MATERIALS.

- A. Any caliche required for construction of the drilling pad and the new access road will be obtained from an existing caliche pit located on State-owned surface in Section 29-T19S-R29E.

#### 7. METHODS OF HANDLING WASTE DISPOSAL.

- A. Drill cuttings will be disposed of in the reserve pits.
- B. Drilling fluids will be allowed to evaporate in the reserve pits until the pits are dry.
- C. Water produced during operations will be collected in tanks until hauled to an approved disposal system or a separate disposal application will be submitted to the USGS for appropriate approval.
- D. Oil produced during operations will be stored in tanks until sold.
- E. Current laws and regulations pertaining to the disposal of human waste will be complied with.
- F. Trash, waste paper, garbage and junk will be buried in a separate trash pit and covered with a minimum of 24 inches of dirt. All waste material will be contained to prevent scattering by the wind.
- G. All trash and debris will be buried or removed from the wellsite within 30 days after finishing drilling and/or completion operations.

#### 8. ANCILLARY FACILITIES.

- A. None required.

#### 9. WELLSITE LAYOUT.

- A. Exhibit D shows the dimensions of the well pad and reserve pits, and the location of major rig components.

- B. The ground surface at the drilling location is relatively flat, with a gentle knoll toward the west. The pad area will be covered with six inches of compacted caliche.
- C. The reserve pits will be plastic lined.
- D. The pad and pit area has been staked and flagged.

#### 10. PLANS FOR RESTORATION OF THE SURFACE

- A. After finishing drilling and/or completion operations, all equipment and other material no needed for further operations will be removed. The location will be cleared of all trash and junk, to leave the wellsite in as aesthetically pleasing a condition as possible.
- B. Unguarded pits, if any, containing fluids will be fenced until they have been filled.
- C. If the proposed well is non-productive, all rehabilitation and/or vegetation requirements of the Bureau of Land Management and the United States Geological Survey will be complied with and will be accomplished as expeditiously as possible. All pits will be filled and leveled within 90 days after abandonment.

#### 11. TOPOGRAPHY. (Exhibit C)

- A. The wellsite and access route are located in a relatively flat area.
- B. The topsoil at the wellsite is moderately soft sand.
- C. The E/2 NE/4 of Section 1 is a potash surface mining operation, located approximately 2800 feet NE of the proposed location.
- D. The vegetation cover at the wellsite is moderately sparse, consisting primarily of prairie grass, some yucca and cacti, and miscellaneous weeds. No wildlife was observed, but it is likely that typical semi-arid desert wildlife inhabit the area. The area is used for cattle grazing.
- E. There are no ponds, lakes, streams or rivers within several miles of the wellsite.
- F. There are no occupied dwellings in the vicinity of the location. The nearest windmills are located about two miles south and two miles east of the wellsite.
- G. The wellsite is located on federal surface.
- H. There is no evidence of any archaeological, historical, or cultural sites in the vicinity of the location.

#### 12. OPERATOR'S REPRESENTATIVE

- A. The field representative responsible for assuring compliance with the approved surface use plan is:

Jim Lunday  
Engineer  
3105 Haynes  
Midland, Texas 79705  
Telephone:  
Office: 915/697-3326

### 13. CERTIFICATION

I hereby certify that I, or persons under my direct supervision, have inspected the proposed drillsite and access route; that I am familiar with the conditions which presently exist; that the statements made in this plan are to the best of my knowledge true and correct; and that the work associated with the operations proposed herein will be performed by The Petroleum Corporation and its contractors and subcontractors in conformity with this plan and the terms and conditions under which it is approved.

2/10/89  
DATE

Ronald P. Henderson  
Ronald P. Henderson  
Operations Engineer  
The Petroleum Corp. of Delaware

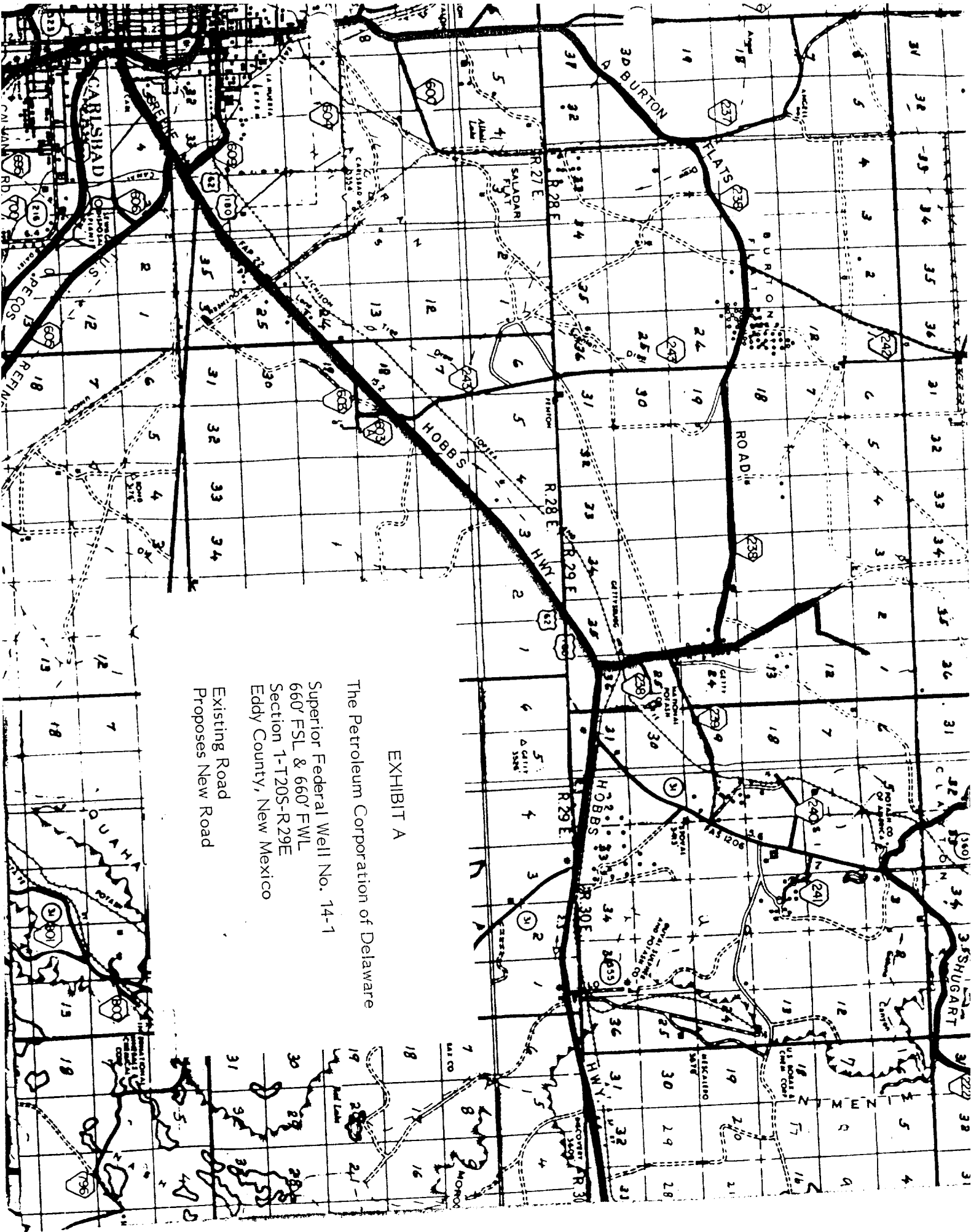


EXHIBIT A

The Petroleum Corporation of Delaware

Superior Federal Well No. 14-1

660' FSL & 660' FWL

Section 1-T20S-R29E

Eddy County, New Mexico

Existing Road

Proposes New Road

PRESIDIO OIL CO.  
SUPERIOR FED 14-1 (ALT.)  
660' FS & WL

R-29-E

2

ROAD

1/4 Corner

11 12

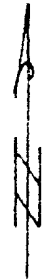
12

T  
20  
S

PROPOSED  
3000'

Existing  
Road

YATES PETROLEUM CORP  
SLINKARD FEDERAL UR NO 2  
1980' FNL 660' FEL



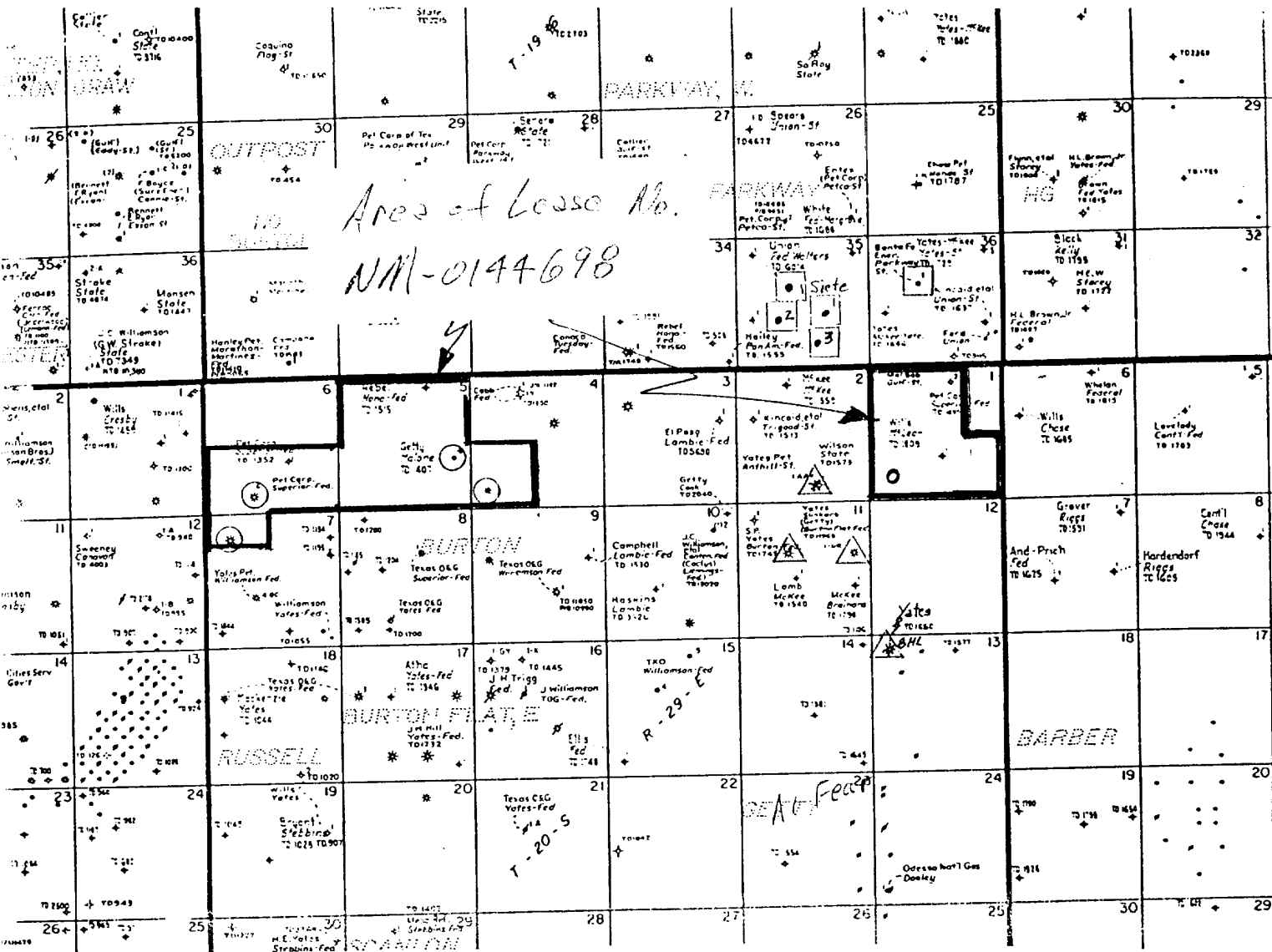
1" = 1000'

11 12

14 13

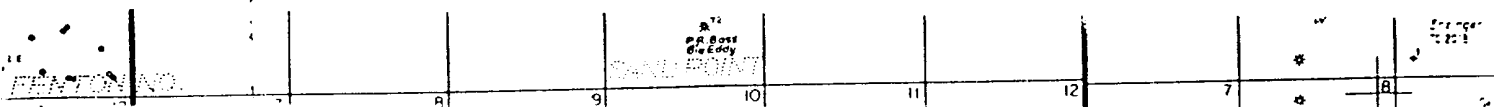
ROAD LOCATION PLAT:

ALT. LOCATION



- - Active Wells on Lse. No. NM-0144698
- - Proposed Location-Section 1-T20S-R59E
- - Offset Delaware (± 4000') Production
- △ - Offset Strawn (± 10,700') Production

EXHIBIT B  
The Petroleum Corporation  
of Delaware  
Superior Federal No. 14-1  
Section 1-T20S-R29E  
Eddy County, New Mexico





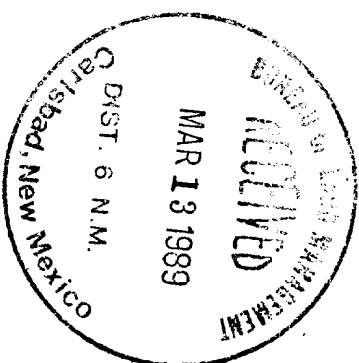
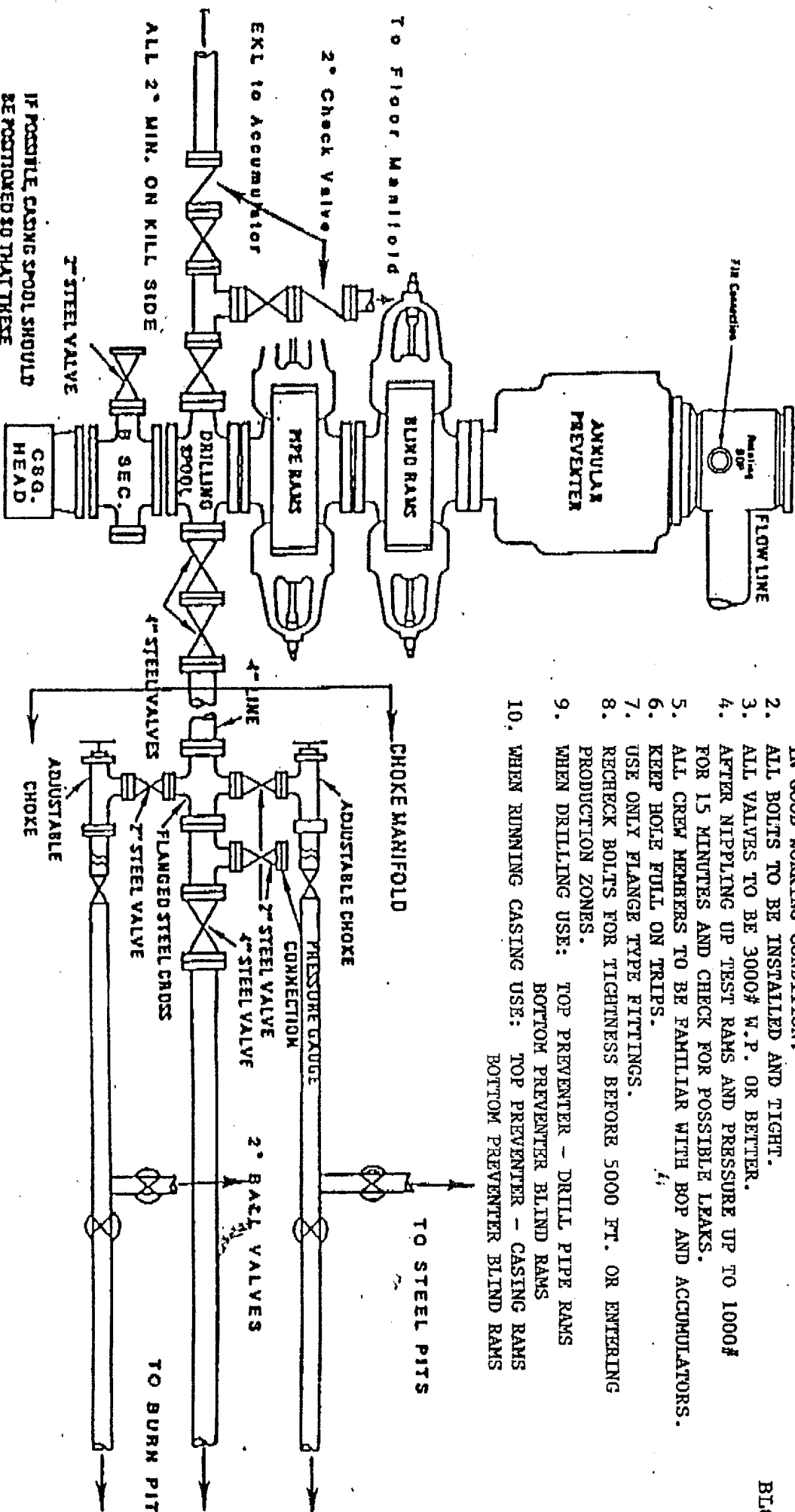
# EXHIBIT E-1

The Petroleum Corporation  
Superior Federal Well #1  
660' FSL and 660' FWL  
Section 1-T20S-R29E  
Eddy County, New Mexico

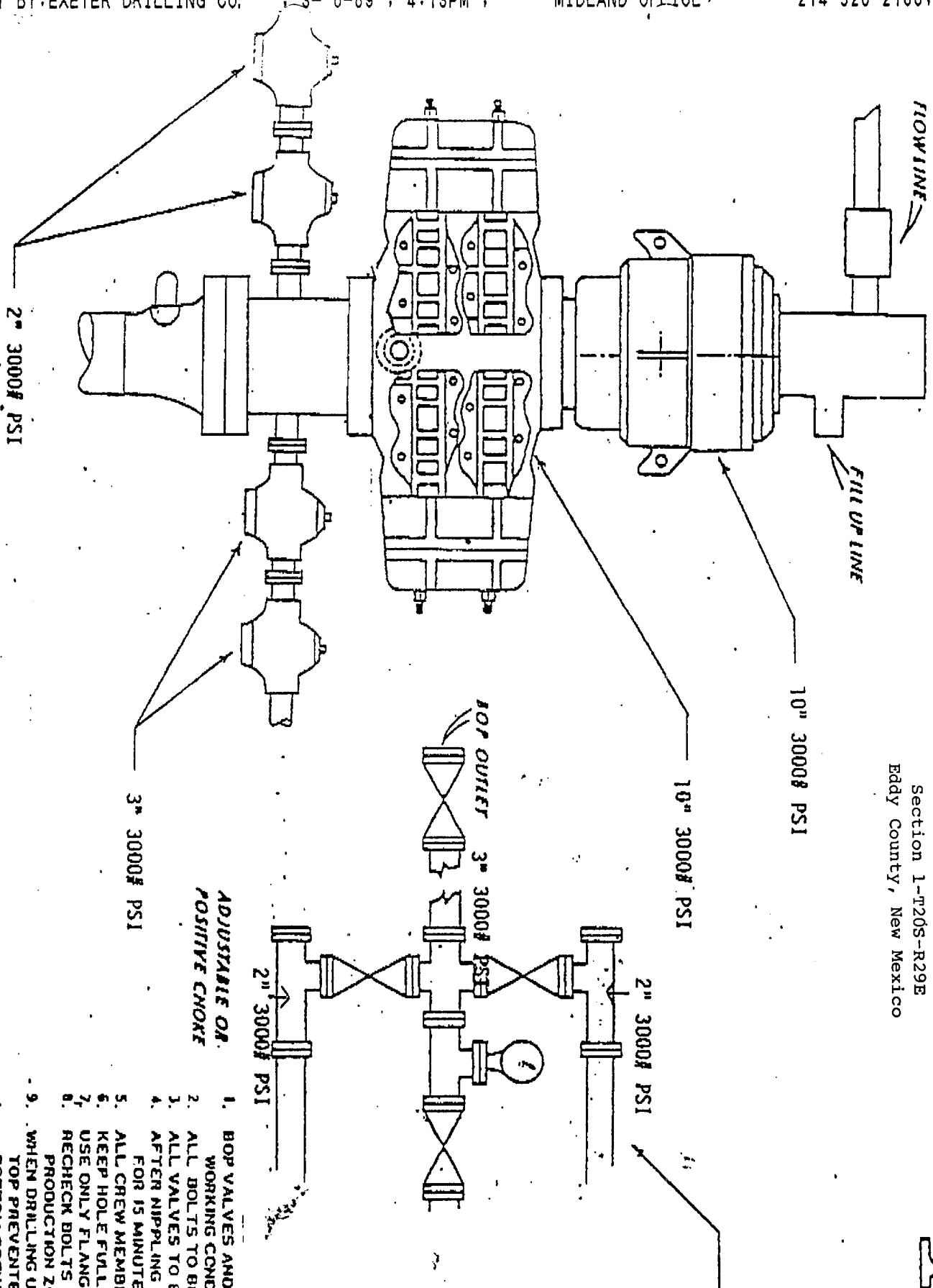


BLOW OUT PREVENTER EQUIPMENT

1. BOP VALVES AND ALL WORKING FITTINGS SHOULD BE IN GOOD WORKING CONDITION.
2. ALL BOLTS TO BE INSTALLED AND TIGHT.
3. ALL VALVES TO BE 3000# W.P. OR BETTER.
4. AFTER NIPPLING UP TEST RAMS AND PRESSURE UP TO 1000# FOR 15 MINUTES AND CHECK FOR POSSIBLE LEAKS.
5. ALL CREW MEMBERS TO BE FAMILIAR WITH BOP AND ACCUMULATORS.
6. KEEP HOLE FULL ON TRIPS.
7. USE ONLY FLANGE TYPE FITTINGS.
8. RECHECK BOLTS FOR TIGHTNESS BEFORE 5000 FT. OR ENTERING PRODUCTION ZONES.
9. WHEN DRILLING USE: TOP PREVENTER - DRILL PIPE RAMS  
BOTTOM PREVENTER - BLIND RAMS
10. WHEN RUNNING CASING USE: TOP PREVENTER - CASING RAMS  
BOTTOM PREVENTER - BLIND RAMS







## EXHIBIT E-2.

The Petroleum Corporation  
Superior Federal Well #1  
660' FSL and 660' FWL  
Section 1-T20S-R29E  
Eddy County, New Mexico

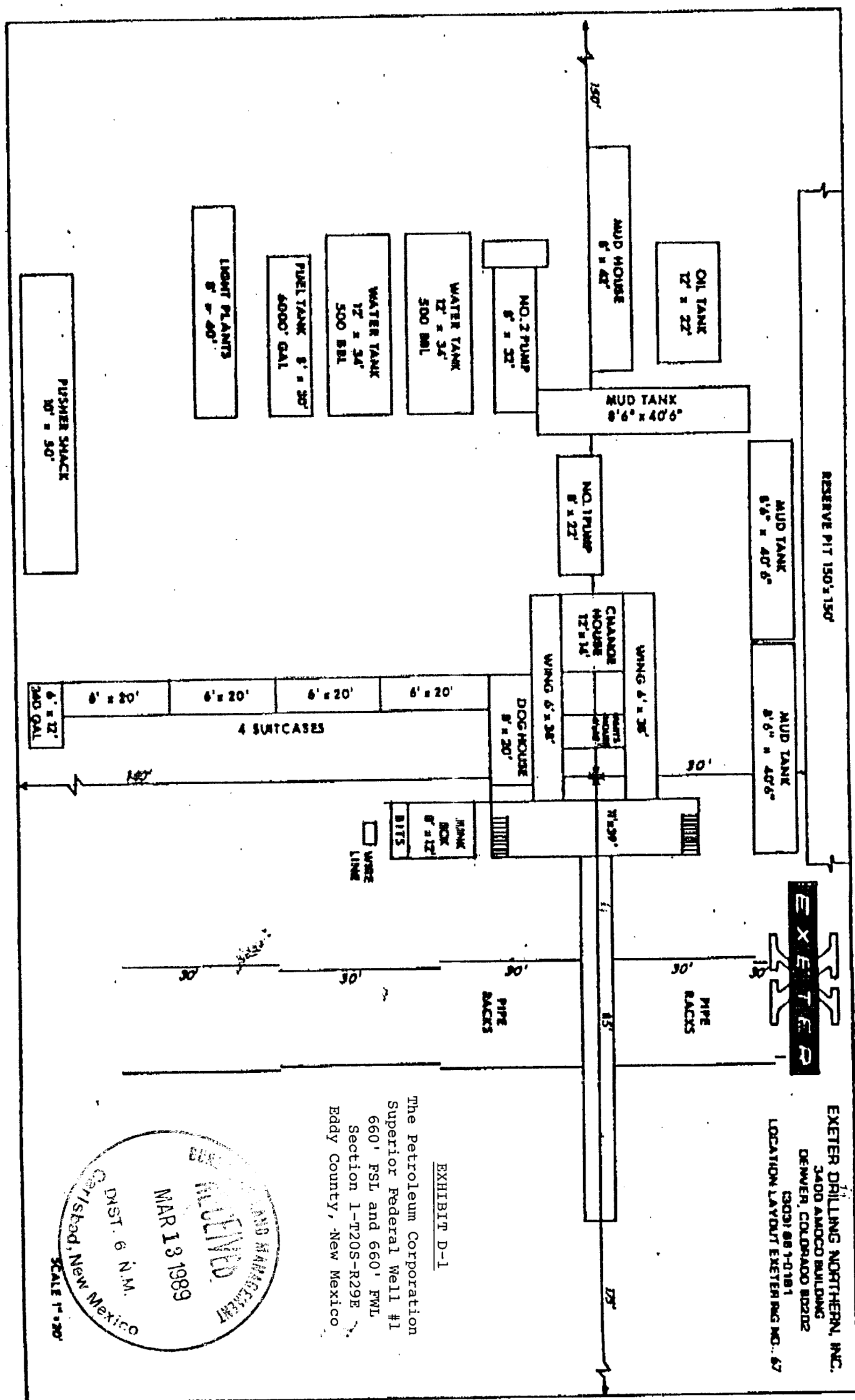


## BLOW OUT PREVENTER EQUIPM

EXETER DRILLING NORTHERN, INC  
3400 AMOCO BUILDING  
DENVER, COLORADO 80202  
(303) 801-0181

ADJUSTABLE OR  
POSITIVE CHOKE

1. BOP VALVES AND ALL WORKING FITTINGS SHOULD BE IN GOOD WORKING CONDITION.
2. ALL BOLTS TO BE INSTALLED AND TIGHT.
3. ALL VALVES TO BE 3000# W.P. OR BETTER.
4. AFTER NIPPLING UP TEST RAMS AND PRESSURE UP TO 4000# FOR 15 MINUTES AND CHECK FOR POSSIBLE LEAKS.
5. ALL CREW MEMBERS TO BE FAMILIAR WITH BOP AND ACCUMULATORS.
6. KEEP HOLE FULL ON TRIPS.
7. USE ONLY FLANGE TYPE FITTINGS.
8. RECHECK BOLTS FOR TIGHTNESS BEFORE 5000 FT. OR ENTERING PRODUCTION ZONES.
9. WHEN DRILLING USE:  
TOP PREVENTER - DRILL PIPE RAMS  
BOTTOM PREVENTER - BLIND RAMS
10. WHEN RUNNING CASING USE:  
TOP PREVENTER - CASING RAMS  
BOTTOM PREVENTER - BLIND RAMS



EXETER DRILLING NORTHERN, INC.  
3400 AMCO BUILDING  
DENVER, COLORADO 80202  
(303) 887-0181  
LOCATION LAYOUT EXETER INC. 67

EXHIBIT D-1

The Petroleum Corporation  
Superior Federal Well #1  
660' FSL and 660' FWL  
Section 1-T20S-R29E  
Eddy County, New Mexico

A circular postmark from Carlisbad, New Mexico. The text "CARLISBAD, NEW MEXICO" is curved along the bottom inner edge. The date "MAR 13 1989" is stamped in the center. The text "POST OFFICE" is curved along the top inner edge. A scale of "1.70" is printed at the bottom of the image.