

NEW MEXICO OIL CONSERVATION COMMISSION
WELL LOCATION AND ACREAGE DEDICATION PLAT

Form C-102
Supersedes C-128
Effective 1-1-65

All distances must be from the outer boundaries of the Section.

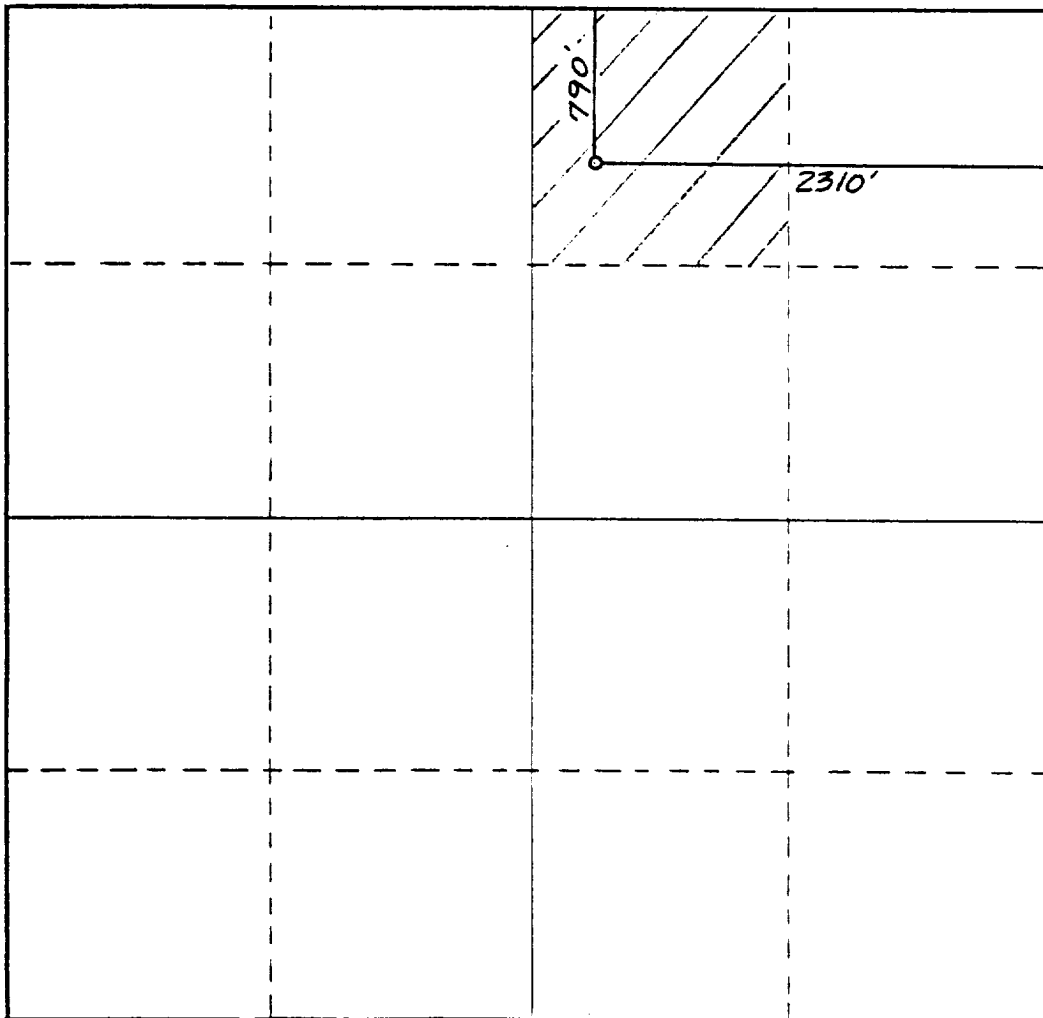
Operator SENDERO PETROLEUM INC.			Lease Toles Federal		Well No. 1
Unit Letter B	Section 13	Township 16 South	Range 30 East	County Eddy County, N.M.	
Actual Footage Location of Well: 2310 feet from the East line and 790 feet from the North line					
Ground Level Elev. 3895.	Producing Formation QW, GGG, San Andres		Pool HENSHAW	Dedicated Acreage: 40 Acres	

1. Outline the acreage dedicated to the subject well by colored pencil or hachure marks on the plat below.
2. If more than one lease is dedicated to the well, outline each and identify the ownership thereof (both as to working interest and royalty). **ONE LEASE, ONE WELL**
3. If more than one lease of different ownership is dedicated to the well, have the interests of all owners been consolidated by communitization, unitization, force-pooling, etc?

☐ Yes ☐ No If answer is "yes," type of consolidation _____

If answer is "no," list the owners and tract descriptions which have actually been consolidated. (Use reverse side of this form if necessary.) **THE TOLES COMPANY, ROSWELL NM OWNS THE N1/2, NE1/4 SEC 13**

No allowable will be assigned to the well until all interests have been consolidated (by communitization, unitization, forced-pooling, or otherwise) or until a non-standard unit, eliminating such interests, has been approved by the Commission.



CERTIFICATION

I hereby certify that the information contained herein is true and complete to the best of my knowledge and belief.

KURT BOLEY

Name

Kurt Boley

Position

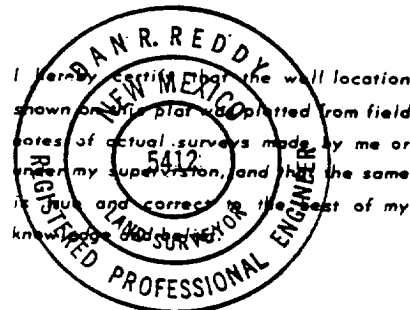
VICE PRESIDENT

Company

SENDERO PETROLEUM, INC.

Date

10-10-90



Date Surveyed

October 4, 1990

Registered Professional Engineer
and/or Land Surveyor

Dan R. Reddy

Certificate No.

NM PE&PS NO. 5412

