



**NEW MEXICO OIL CONSERVATION COMMISSION  
WELL LOCATION AND ACREAGE DEDICATION PLAT**

Form C-102  
Supersedes C-128  
Effective 1-1-65

All distances must be from the outer boundaries of the Section.

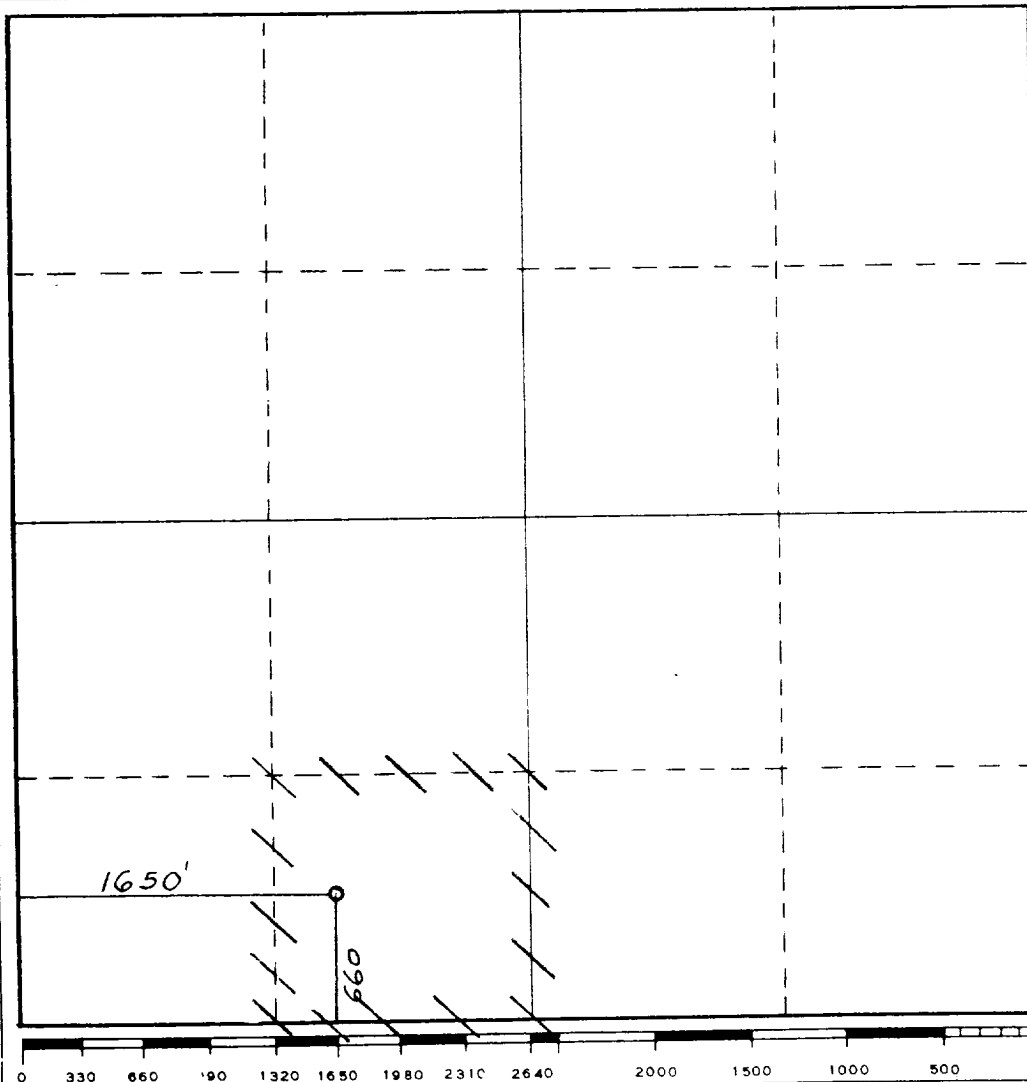
Operator <b>SIETE OIL &amp; GAS CORPORATION</b>			Lease <b>Indigo Federal</b>		Well No. <b>2</b>
Unit Letter <b>N</b>	Section <b>13</b>	Township <b>20 South</b>	Range <b>28 East</b>	County <b>Eddy County, N.M.</b>	
Actual Footage Location of Well: <b>660</b> feet from the <b>South</b> line and <b>1650</b> feet from the <b>West</b> line					
Ground Level Elev. <b>3244.</b>	Producing Formation <b>Bone Spring</b>		Pool <b>Wildcat</b>		Dedicated Acreage: <b>40</b> Acres

1. Outline the acreage dedicated to the subject well by colored pencil or hachure marks on the plat below.
2. If more than one lease is dedicated to the well, outline each and identify the ownership thereof (both as to working interest and royalty).
3. If more than one lease of different ownership is dedicated to the well, have the interests of all owners been consolidated by communitization, unitization, force-pooling, etc?

☐ Yes    ☐ No    If answer is "yes," type of consolidation \_\_\_\_\_

If answer is "no," list the owners and tract descriptions which have actually been consolidated. (Use reverse side of this form if necessary.) \_\_\_\_\_

No allowable will be assigned to the well until all interests have been consolidated (by communitization, unitization, forced-pooling, or otherwise) or until a non-standard unit, eliminating such interests, has been approved by the Commission.



**CERTIFICATION**

*I hereby certify that the information contained herein is true and complete to the best of my knowledge and belief.*

*Cathy Gatley-Geely*  
Name  
**Drilling Technician**

Position  
**Siete Oil and Gas Corp.**

Company  
**December 19, 1990**

Date

*I hereby certify that the well location shown on this plat was plotted from field notes of actual surveys made by me or under my supervision, and that the same is true and correct to the best of my knowledge and belief.*

Date Surveyed

**December 4, 1990**

Registered Professional Engineer  
and/or Land Surveyor

*Don R. Reddy*  
Certificate No.

**NM PE&PS NO. 5412**

SUPPLEMENTAL DRILLING DATA  
SIETE OIL AND GAS CORPORATION  
INDIGO FEDERAL #2  
660' FSL & 1650' FWL  
Section 13: T20S, R28E  
Eddy County, New Mexico  
Lease Number: LC-050797

The following items supplement "Onshore Oil and Gas Order No. 1":

1. The geologic surface is rustler anhydrite.
2. The estimated geological marker tops:

Del. Sand	3000'
Bone Spring	5400'

3. Estimated depths to water, oil or gas:

Water:	Approx. 150'
Oil or Gas:	3200'

4. Proposed casing program:

<u>Size</u>	<u>Interval</u>	<u>Weight</u>	<u>Grade</u>	<u>Joint</u>	<u>New or Used</u>
13 3/8"	0 - 300'	48#	J-55	LT&C	New
8 5/8"	0 - 2900'	32#&24#	J-55	LT&C	New
5 1/2"	0 - 8000'	15.5#	J-55	LT&C	New

5. Pressure Control Equipment: The blowout preventer will be a double ram type preventer. A sketch is attached.
6. Mud Program:  
0-250': Fresh water & native mud adding gel & lime for sufficient viscosity to insure clean hole for running casing.  
250-2900': Cut brine.  
2900-8000': Drill out with native becoming brine, add starch and salt gel to maintain a viscosity of 30, @ TD 40; mud weight 9.3#.
7. Auxiliary Equipment: A kelly cock will be installed on the rig floor while drilling operations are in progress.
8. Testing, logging & coring programs: Possible DST and/or coring is not planned.
9. No abnormal pressures or temperature zones are anticipated.
10. Anticipated starting date: Commence drilling operations ASAP.

SURFACE USE PLAN  
FOR  
DRILLING, COMPLETING AND PRODUCING

SIETE OIL AND GAS CORPORATION  
Indigo Federal No. 2  
660' FSL & 1650' FWL  
Section 13: T20S, R28E  
Eddy County, New Mexico  
Lease Number: NM-050797

LOCATED: 22 miles Southeast of Artesia, New Mexico

FEDERAL LEASE NUMBER: NM-050797

LEASE ISSUED: January 1, 1940

RECORD LESSEE: Collier Petroleum

BOND COVERAGE: \$25,000 Bond of Siete Oil and Gas Operator

ACRES IN LEASE: 720

SURFACE OWNERSHIP: Federal

POOL: Wildcat Bone Spring

EXHIBITS:

- A. Area Road Map
- B. Topographic Map Showing Access Route
- C. Lease Map Showing Well Tests
- D. Sketch of Well Pad

### ROAD LOG TO PROPOSED DRILLSITE

Starting point is at the intersection of US Highway 206 and US Highway 82 East of Artesia, NM:

- 0.00      Proceed South on County Road 206 8.5 miles.
- 8.50      Turn East-Southeast on County Road 237 and proceed 2.4 miles to County Road 238.
- 11.90     Turn East on County Road 238 and go 3.4 miles past Indigo Fed. #1.
- 12.30     Turn South and go .4 miles to Indigo Fed. #3.
- 12.70     Turn East and go .2 miles.
- 12.90     Location.

### THIRTEEN POINT PROGRAM

1. EXISTING ROADS:

- A. Existing roads, which lead to the proposed drillsite, are shown on Exhibits "A" & "B".

2. PROPOSED NEW ROAD:

- A. The new access road will be approx. 14' wide and approx. 660' long. It will enter the proposed location from the Southwest corner. The new access road is shown on Exhibit "B".

B. Surfacing Materials: Caliche

C. Maximum Grade: Less than 1%

D. Turnouts: None required

E. Drainage Design: None required

F. Culverts: None required

G. Cuts and Fills: Less than 3'

H. Gates and Cattleguards: None required

3. LOCATION OF EXISTING WELLS:

- A. Existing wells are shown on Exhibit "C".

4. LOCATION OF EXISTING AND/OR PROPOSED FACILITIES:

- A. If well is productive, we will lay approx 2000' of 2" polyurethane flowline from the proposed location to the Indigo Federal #1 tank battery (NW $\frac{1}{4}$ SW $\frac{1}{4}$ ).

5. LOCATION AND TYPE OF WATER SUPPLY:

- A. A water supply well is not planned. Water will be purchased and hauled to the well site over existing roads.

6. SOURCE OF CONSTRUCTION MATERIALS:

- A. Construction materials will be obtained from a federal pit located in Sec. 17, T20S, R29E (SE $\frac{1}{4}$ SW $\frac{1}{4}$ ).

7. METHODS OF HANDLING WASTE DISPOSAL:

- A. Drill cuttings will be disposed of in the drilling pits.

- B. Drilling fluids will be allowed to evaporate in the drilling pits until the pits are dry.
- C. Water produced during tests will be disposed of in the drilling pits.
- D. Oil produced during tests, will be put into frac tanks.
- E. Trash, waste paper, garbage and junk will be buried in a trash pit and covered with a minimum of 24" of dirt. All waste material will be contained to prevent scattering by the wind. Location of the trash pit is shown on Exhibit "D".

8. ANCILLARY FACILITIES:

- A. If needed, an electric line will be ran to an existing electrical line located at the Indigo Fed. #1.

9. WELLSITE LAYOUT:

- A. The drill site has been surveyed, staked and flagged.
- B. The dimensions and relative location of the drill pad, mud pits and the trash pits with respect to the wellbore are shown on Exhibit "D".
- C. The wellsite is nearly level and will not require any cut or fill. The drill pad will be surfaced with caliche.

10. PLANS FOR RESTORATION OF THE SURFACE:

- A. After completion of drilling and/or completion operations, all equipment and other materials not needed for operations will be removed. Pits will be filled and the location cleansed of all trash and junk to leave the wellsite in an aesthetically pleasing condition as possible.
- B. Any unguarded pits containing fluids will be fenced until they are filled.
- C. After abandonment, all equipment, trash and junk will be removed and the location cleaned. Any special rehabilitation and/or special revegetation requirements of the surface management agency will be complied with and accomplished as expeditiously as possible.

11. OTHER INFORMATION:

- A. Topography: The surface is relatively flat, drainage to the Southwest.
- B. Soil: The top soil at the well site is a chalky, white gypsum soil.

- C. Flora and Fauna: Vicinity surrounding the drillsite is semi-arid desert rangeland. Vegetation is thinly scattered with desert shrubs interspersed with a small amount of native grasses. No wildlife was observed, rodents, coyotes, dove or quail.
- D. Ponds and Streams: None in the area.
- E. Residences and other structures: None in the immediate area.
- F. Archaeological, Historical and Other Cultural Sites: None were observed in this area. The pad area was archaeologized on December 4, 1990.
- G. Land Use: Grazing and occasional hunting.

12. OPERATOR'S REPRESENTATIVE:

Representative responsible for assuring compliance with the approved Surface Use Plan:

Harold D. Justice  
Petroleum Building, Suite 200  
200 West First  
Roswell, New Mexico 88202  
Office: 622-2202  
Home: 625-0072

13. CERTIFICATION:

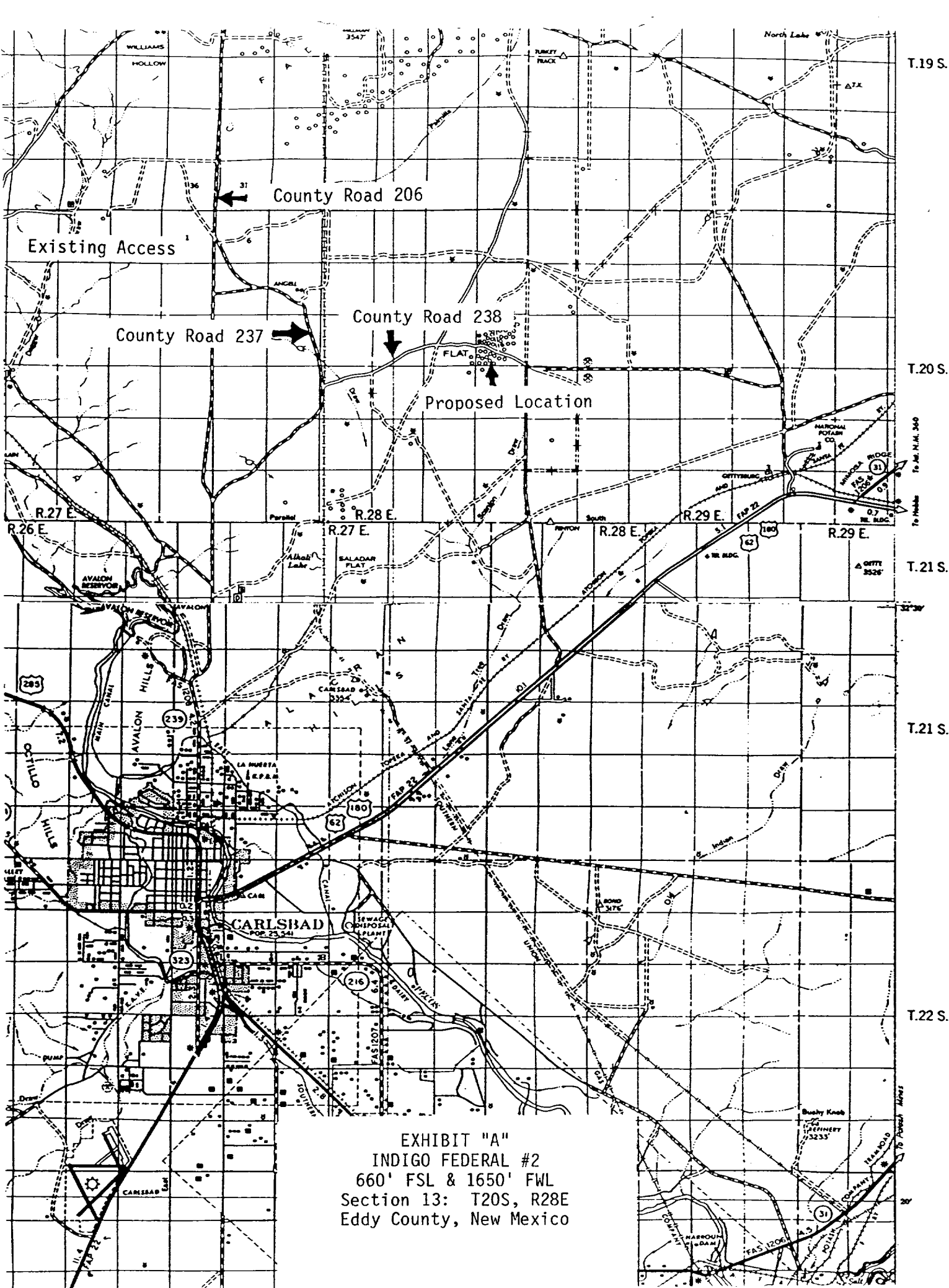
I hereby certify that I, or persons under my supervision have inspected the proposed drillsite and access road; that I am familiar with the conditions which presently exist; that the statements made in this plan are, to the best of my knowledge true and correct; and that the work associated with operations proposed herein will be performed by SIETE OIL AND GAS CORPORATION, and its subcontractors in conformity with this plan and the terms and conditions under which it is approved.

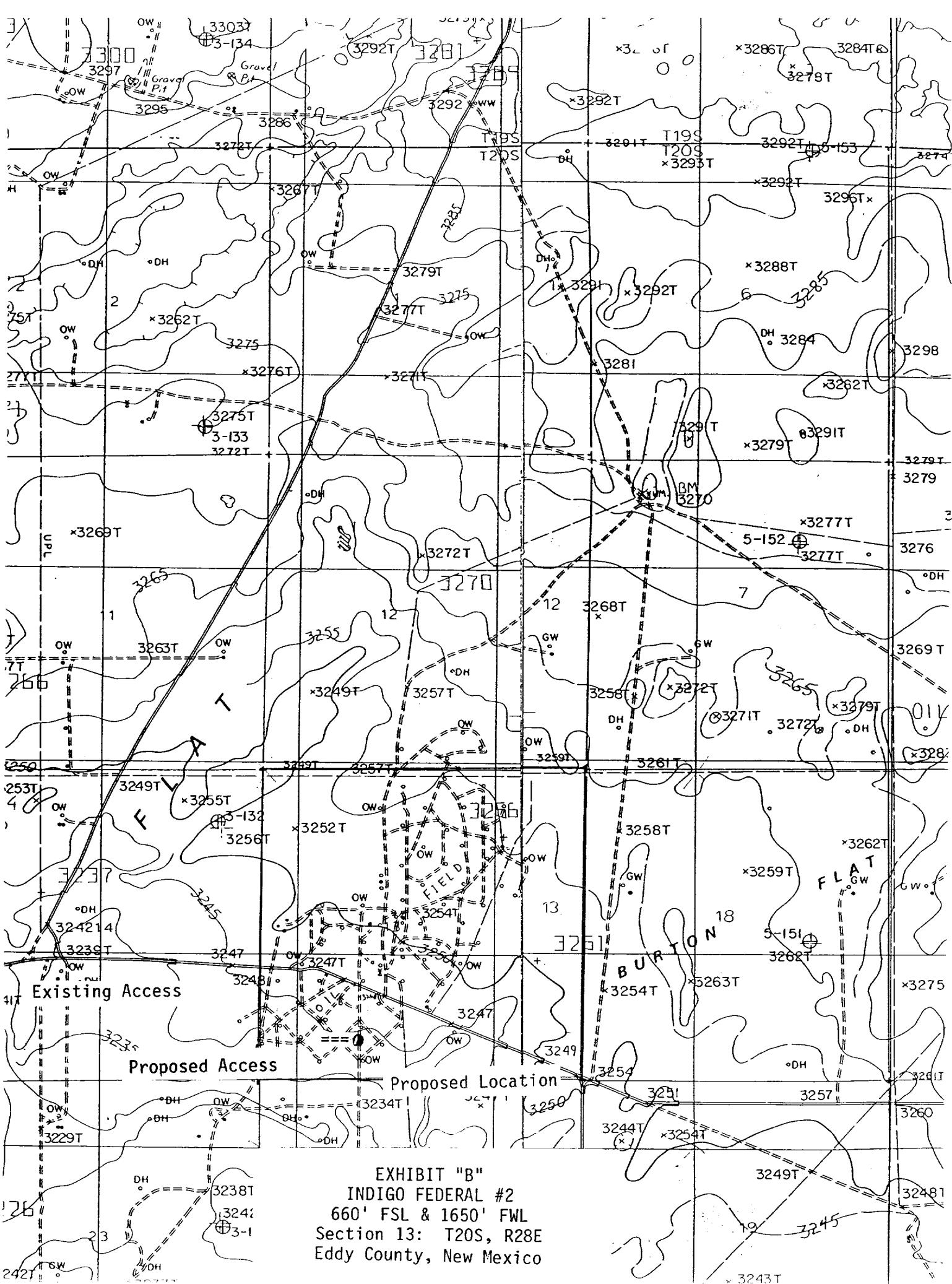
**SIETE OIL AND GAS CORPORATION**

Date: 12/19/90

BY: Harold D. Justice CS  
Harold D. Justice  
V.P. Drilling & Production









WEK Drilling Co., Inc.  
Plat Rig #2  
Location & Pit Specs  
1-1-89

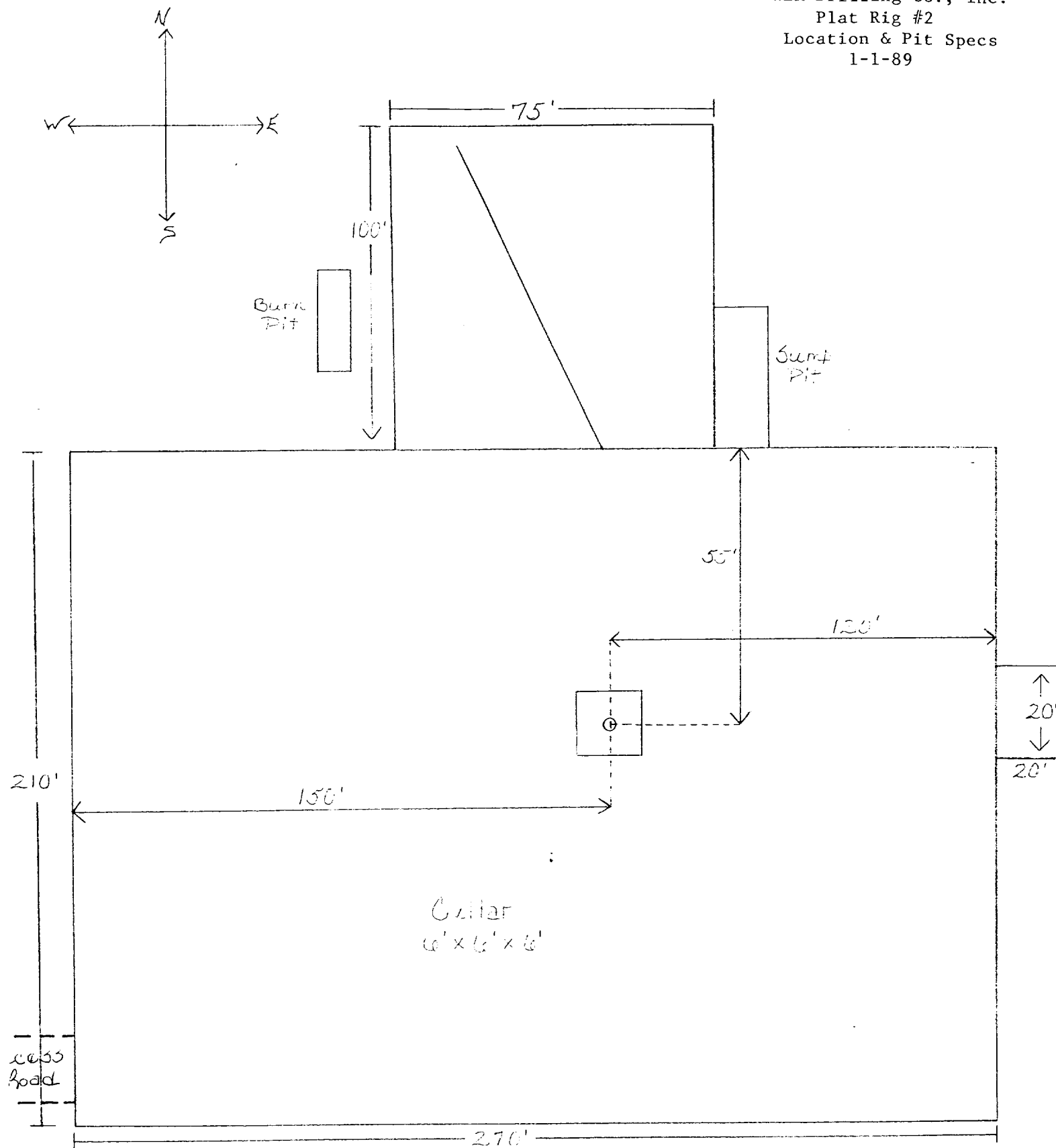


EXHIBIT "D"  
INDIGO FEDERAL #2  
660' FSL & 1650' FWL  
Section 13: T20S, R28E  
Eddy County, New Mexico