

Submit to Appropriate
District Office
State Lease - 6 copies
Fee Lease - 5 copies

State of New Mexico
Energy, Minerals and Natural Resources Department

Form C-101
Revised 1-1-89

OIL CONSERVATION DIVISION

DISTRICT I
P.O. Box 1980, Hobbs, NM 88240

DISTRICT II
P.O. Drawer DD, Artesia, NM 88210

DISTRICT III
1000 Rio Brazos Rd., Aztec, NM 87410

P.O. Box 2088
Santa Fe, New Mexico 87504-2088

API NO. (assigned by OCD on New Wells)

30-015-26636

5. Indicate Type of Lease

STATE ☒

FEE ☐

6. State Oil & Gas Lease No.

7. Lease Name or Unit Agreement Name

Dee State

8. Well No.

4

9. Pool name or Wildcat

X North Dagger Draw Upper Penn

1a. Type of Work:

DRILL ☒

RE-ENTER ☐

DEEPEN ☐

PLUG BACK ☐

b. Type of Well:

OIL
WELL ☒

GAS
WELL ☐

OTHER ☐

SINGLE
ZONE ☒

MULTIPLE
ZONE ☐

2. Name of Operator

Conoco Inc. ✓

3. Address of Operator

10 Desta Drive West, Midland, TX 79705

4. Well Location

Unit Letter

L

1880
1980

Feet From The

south

Line and

860
560

Feet From The

west

Line

Section 36

Township

19S

Range

24E

NMPM

Eddy

County

10. Proposed Depth

8100'

11. Formation

Cisco Canyon

12. Rotary or C.T.

Rotary

13. Elevations (Show whether DF, RT, GR, etc.)

GR 3636'

14. Kind & Status Plug. Bond

Blanket

15. Drilling Contractor

16. Approx. Date Work will start

17. PROPOSED CASING AND CEMENT PROGRAM

SIZE OF HOLE	SIZE OF CASING	WEIGHT PER FOOT	SETTING DEPTH	SACKS OF CEMENT	EST. TOP
14-3/4"	9-5/8"	40#	1200'	2000 sxs	Surface
8-3/4"	7"	26#	8100'	2100 sxs	Surface

This well is proposed to be drilled as a Cisco oil producer.

Attached are:

- 1) Well Location and acreage dedication plat.
- 2) Proposed well plan outline.
- 3) Cementing program outline.
- 4) BOP Specifications.

APPROVAL VALID FOR 180 DAYS
PERMIT EXPIRES 7/9/91
UNLESS DRILLING UNDERWAY

IN ABOVE SPACE DESCRIBE PROPOSED PROGRAM: IF PROPOSAL IS TO DEEPEN OR PLUG BACK, GIVE DATA ON PRESENT PRODUCTIVE ZONE AND PROPOSED NEW PRODUCTIVE ZONE. GIVE BLOWOUT PREVENTER PROGRAM, IF ANY.

I hereby certify that the information above is true and complete to the best of my knowledge and belief.

SIGNATURE Gerry W. Hoover TITLE Regulatory Coordinator DATE 2/5/91

TYPE OR PRINT NAME Gerry W. Hoover TELEPHONE NO. 915-686-6548

(This space for State Use) ORIGINAL SIGNED BY
MIKE WILLIAMS
SUPERVISOR, DISTRICT II

APPROVED BY _____ TITLE _____ DATE FEB 8 1991

CONDITIONS OF APPROVAL, IF ANY:

NOTIFY N.M.O.C.D. IN SUFFICIENT
TIME TO WITNESS CEMENTING THE
95/8 CASING

Submit to Appropriate
District Office
State Lease - 4 copies
Fee Lease - 3 copies

State of New Mexico
Energy, Minerals and Natural Resources Department

Form C-102
Revised 1-1-89

OIL CONSERVATION DIVISION

P.O. Box 2088
Santa Fe, New Mexico 87504-2088

DISTRICT I
P.O. Box 1980, Hobbs, NM 88240

DISTRICT II
P.O. Drawer DD, Artesia, NM 88210

DISTRICT III
1000 Rio Brazos Rd., Aztec, NM 87410

WELL LOCATION AND ACREAGE DEDICATION PLAT

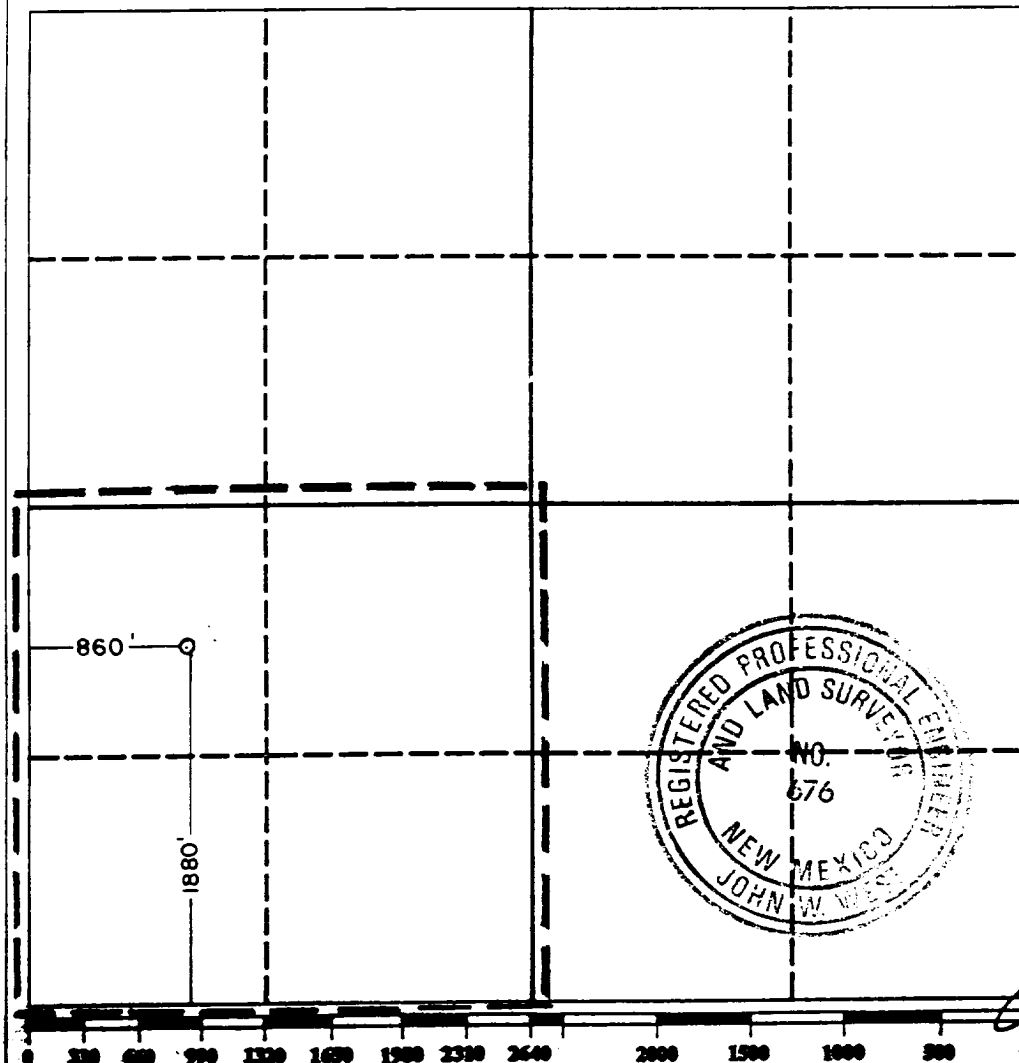
All Distances must be from the outer boundaries of the section

Operator CONOCO, INC.		Lease DEE STATE		Well No. 4
Unit Letter L	Section 36	Township 19 SOUTH	Range 24 EAST NMPM	County EDDY
Actual Footage Location of Well: 1880 feet from the SOUTH line and 860 feet from the WEST line				
Ground level Elev. 3636.4	Producing Formation Cisco	Pool North Dagger Draw Upper Penn.	Dedicated Acreage: 160 Acres	

1. Outline the acreage dedicated to the subject well by colored pencil or hatchure marks on the plat below.
2. If more than one lease is dedicated to the well, outline each and identify the ownership thereof (both as to working interest and royalty).
3. If more than one lease of different ownership is dedicated to the well, have the interest of all owners been consolidated by communitization, unitization, force-pooling, etc.?
☐ Yes ☐ No If answer is "yes" type of consolidation _____

If answer is "no" list the owners and tract descriptions which have actually been consolidated. (Use reverse side of this form if necessary.) _____

No allowable will be assigned to the well until all interests have been consolidated (by communitization, unitization, forced-pooling, or otherwise) or until a non-standard unit, eliminating such interest, has been approved by the Division.



OPERATOR CERTIFICATION

I hereby certify that the information contained herein is true and complete to the best of my knowledge and belief.

Jerry W. Hoover
Signature

Jerry W. Hoover
Printed Name
Regulatory Coordinator
Position

Conoco Inc.
Company

2/4/91
Date

SURVEYOR CERTIFICATION

I hereby certify that the well location shown on this plat was plotted from field notes of actual surveys made by me or under my supervision, and that the same is true and correct to the best of my knowledge and belief.

Date Surveyed

1-16-91

Signature & Seal of
Professional Surveyor

John W. West
Signature

Certificate No. JOHN W. WEST, 676

RONALD J. EIDSON, 8290

PROPOSED WELL PLAN OUTLINE

WELL NAME: Dee State No.4 COUNTY: Eddy STATE: NM

LOCATION: 1880' FSL & 860' FWL EST. KB: 3651'

Section 36, T19S, R24E EST. GL: 3636'

DEPTH	FORMATION TOPS & TYPE	DRILLING PROBLEMS	TYPE OF FORMATION EVALUATION	HOLE SIZE	CASING SIZE-DEPTH	FRAC GRAD	FORM PRESS GRAD	(PPG) MUD WT & TYPE	DAYS
	Surface water 300'	Possible waterflow to 900'	0'-1200' Deviation survey each 250' not to exceed 3°					Spud 8.33	
1000		Known lost circulation	Install H2S monitor @1200'	14-3/4	9-5/8 @1200'		<8.33	Cut Brine 8.8- 9.2	4
	Glorieta 1989'	H2S poss. to TD	Install a 2- man mudlogger 1200' - TD		w/2000 sx "lite" & "C" (to protect from surface waterflows and severe lost circ.)				6
2000			1200'-3000'						
	Yeso 2145'	Deviations from 4-6° likely from 3000'-6000' (ZW#1 & Parish IV #1)	Deviation survey each 250' not to exceed 5°					pH>10 to TD	8
3000			3000'-6000'						
4000	Abo 4198'		Deviation survey each 100' - 150' not to exceed 5°						10
					DV Tool above lower Abo LC zone (if nec.) 4500'				13
5000									
	Wolfcamp 5100'								17
6000			6000'-TD Deviation survey each 250' not to exceed 5°						
		H2S possible in Cisco						Mud up with salt gel and starch @7500'	20
7000									
	Cisco 7600'								
8000				8-3/4"					
	Target TD 8100'		GR-CNL-LDT- DLL-MSFL-CAL from 8100' - 1200'		7" @8100'	>15	8.3- 9.0		25
					w/2100 sx "H" & "C" lite				
9000			Image Log from 8100'-7600'						

WELL NAME: Dee State No. 4

LOCATION : (Dagger Draw Field) Eddy County, New Mexico

Casing Program

Surface 9-5/8 inch in 14 3/4 hole at 1200 ft.
Inter inch in hole at ft.
Prod 7 inch in 8 3/4 hole at 8100 ft.

Cementing Program

Surface

Lead 800 sxs Class Thixad Mixed at 12.2 ppg
Additives 12# Calsonite
Tail 1200 sxs Class C Mixed at 13.9 ppg
Additives 2% CaCl

Intermediate (first stage)

Lead sxs Class Mixed at ppg
Additives
Tail sxs Class Mixed at ppg
Additives
Percent free water Water loss cc

(second stage)

Lead sxs Class Mixed at ppg
Additives
Tail sxs Class Mixed at ppg
Additives
Percent free water Water loss cc

Production (first stage)

Lead 1100 sxs Class "C" Lite Mixed at 12.4 ppg
Additives 6% GEL FLA as needed
Tail 300 sxs Class H Mixed at ppg
Additives 3% KCl FLA as needed for zero free water and 250 cc
Percent free water Water loss cc

(second stage)

Lead 1000 sxs Class "C" Lite Mixed at ppg
Additives 6% GEL FLA as needed
Tail 300 sxs Class H Mixed at ppg
Additives 3% KCl FLA as needed
Percent free water Water loss cc

BOP SPECIFICATIONS

