

UNITED STATES
DEPARTMENT OF THE INTERIOR
BUREAU OF LAND MANAGEMENT

CONTACT RECEIVING
OFFICE F NUMBER
OF COPIES REQUIRED
(Other instructions on
reverse side)

30-015-26721
BLM Roswell District
Modified Form No.
NMO60-3160-2

APPLICATION FOR PERMIT TO DRILL, DEEPEN, OR PLUG BACK

1a. TYPE OF WORK

DRILL ☒

DEEPEN ☐

PLUG BACK ☐

b. TYPE OF WELL

OIL
WELL ☒

GAS
WELL ☐

OTHER

SINGLE
ZONE ☒

MULTIPLE
ZONE ☐

2. NAME OF OPERATOR

Marbob Energy Corporation ✓

3a. Area Code & Phone No.

505-748-3303

3. ADDRESS OF OPERATOR

P. O. Drawer 217, Artesia, NM 88210

4. LOCATION OF WELL (Report location clearly and in accordance with any State requirements.)

At surface

18501650 FSL 2310 FWL

At proposed prod. zone
same

14. DISTANCE IN MILES AND DIRECTION FROM NEAREST TOWN OR POST OFFICE*

Approximately 20 air miles east of Artesia, NM

O. C. D.
ARTESIA, OFFICE

15. DISTANCE FROM PROPOSED*
LOCATION TO NEAREST
PROPERTY OR LEASE LINE, FT.
(Also to nearest drlg. unit line, if any)

1650

16. NO. OF ACRES IN LEASE

80

17. NO. OF ACRES ASSIGNED
TO THIS WELL

40

18. DISTANCE FROM PROPOSED LOCATION*
TO NEAREST WELL, DRILLING, COMPLETED,
OR APPLIED FOR, ON THIS LEASE, FT.

19. PROPOSED DEPTH

5000'

20. ROTARY OR CABLE TOOLS

Rotary

21. ELEVATIONS (Show whether DF, RT, GR, etc.)

3649.7 GR 3646.6

22. APPROX. DATE WORK WILL START*

3/11/91

23. PROPOSED CASING AND CEMENTING PROGRAM

HOLE SIZE	CASING SIZE	WEIGHT/FOOT	GRADE	THREAD TYPE	SETTING DEPTH	QUANTITY OF CEMENT
12 1/4"	8 5/8"	24#	J-55	LTC	350'	to circulate
7 7/8"	5 1/2"	17#	J-55	LTC	5000'	Sufficiently
					attempt to circulate.	

Pay zone will be selectively perforated and stimulated as needed
for optimum production.

Attached are: 1. Location & acreage dedication plat
2. Supplemental drilling data
3. Surface Use Plan

NOTE: On production string, a fluid caliber will be run, will
figure cement w/25% excess, attempt to circulate.

IN ABOVE SPACE DESCRIBE PROPOSED PROGRAM: If proposal is to deepen or plug back, give data on present productive zone and proposed new productive zone. If proposal is to drill or deepen directionally, give pertinent data on subsurface locations and measured and true vertical depths. Give blowout preventer program, if any.

24.

SIGNED

Rhonda Nelson

TITLE

Production Clerk

DATE

2/14/91

(This space for Federal or State office use)

PERMIT NO.

APPROVAL DATE

APPROVED BY

TITLE

DATE

4-17-91

CONDITIONS OF PERMIT SUBJECT TO

GENERAL REQUIREMENTS AND
SPECIAL STIPULATIONS

ATTACHED

*See Instructions On Reverse Side

Abstract

1990

1000

1-25-64
17-1-64
19-1-64

2024-2025

25830

SUPPLEMENTAL DRILLING DATA

MARBOB ENERGY CORPORATION
PATRIOT FEDERAL NO. 1
NE/4SW/4 SEC. 12, T-17-S, R-29-E
EDDY COUNTY, NEW MEXICO
(DEVELOPMENT WELL)

1. SURFACE FORMATION: Quaternary.

2. ESTIMATED TOPS OF GEOLOGIC MARKERS:

Salt	360'	Queen	1815'
Base Salt	780'	Grayburg	2140'
Yates	930'	San Andres	2510'
Seven Rivers	1145'	Glorietta	3900'

3. ANTICIPATED POROSITY ZONES:

Water	Above 180'
Oil	2350' - 5000'

4. CASING DESIGN:

SIZE	INTERVAL	WEIGHT	GRADE	JOINT	CONDITION
8 5/8"	0-350'	24.0#	J-55	LTC	New
5 1/2"	0-5000'	17.0#	J-55	LTC	New

5. SURFACE CONTROL EQUIPMENT: A double ram-type or annular BOP will be used. (See diagram attached as Exhibit "E")

6. CIRCULATING MEDIUM:

0' - 350' Fresh water mud with gel or lime as needed for viscosity control.

350' - 5,000' Salt water mud, conditioned as necessary for control of viscosity and water loss or gain.

7. AUXILIARY EQUIPMENT: Drill string safety valve.

8. LOGGING PROGRAM: CNL-FDC W/GR Log will be run to TD.

9. ABNORMAL PRESSURES, TEMPERATURES OR GASES: A water flow may be encountered in the salt section.

10. ANTICIPATED STARTING DATE: It is planned that operations will commence about March 11, 1991. Duration of drilling, testing and completion operations should be one to four weeks.

SURFACE USE PLAN
FOR
DRILLING, COMPLETION AND PRODUCTION

MARBOB ENERGY CORPORATION
PATRIOT FEDERAL NO. 1
NE/4SW/4 SEC. 12, T-17-S, R-29-E
EDDY COUNTY, NEW MEXICO
(DEVELOPMENT WELL)

This plan is submitted with the application for permit to drill the above described well. The purpose of the plan is to describe the location of the proposed development well, the proposed construction activities and operations plan, the magnitude of surface disturbance involved, and the procedures to be followed in rehabilitating the surface after completion of the operation so that a complete appraisal can be made of the environmental affects associated with the operation.

LOCATED: Approximate 20 air miles east of Artesia,
New Mexico.

FEDERAL LEASE NUMBER: LC-065591

LEASE ISSUED: August 1, 1968

RECORD LESSEE: Davoil Incorporated and Great Western
Drilling

OPERATOR'S AUTHORITY: Operating rights owned by Marbob Energy
Corporation.

BOND COVERAGE: Lessees \$150,000 nation-wide bond.

ACRES IN LEASE: 80 acres

SURFACE OWNERSHIP: U.S. Government with a grazing permit
issued to Bogle Farms, Inc., P.O. Box 358,
Dexter, New Mexico 88230.

POOL: Square Lake, San Andres
(40-acre spacing)

FOOTAGE LOCATION OF DRILLSITE: 1650 FSL and 2310 FWL

EXHIBITS:

- A. Portion of Eddy County Map
- B. Oil & Gas Map
- C. Road Map & Wells in vicinity of
Proposed Drillsite
- D. Sketch of Well Pad
- E. Sketch of BOP

THIRTEEN POINT PROGRAM

1. EXISTING ROADS: From Artesia go approximately 20 miles east on Federal Highway US-82 4/10 of a mile beyond Mile Post 129. (This point is approximately 3.1 miles west of Loco Hills, New Mexico). From this starting point turn left (North) on County Road 215 and proceed in a northerly direction for a distance of 1.4 miles. Next turn right and proceed east for a distance of .1 miles. Then turn left and proceed in a Northeast direction for a distance of .2 miles. The road forks. Take the right fork and continue Northeast for a distance of .3 miles. The proposed location is directly to the east.
2. PROPOSED NEW ROAD: No new roads are necessary since existing road is adjacent to the drillsite.
3. LOCATION OF EXISTING WELLS: The nearest production to the proposed well is the S.L. Federal No. 1 well located southwest of the proposed drillsite. This well and all existing wells in the vicinity of the proposed drillsite are shown on Exhibits "B" and "C".
4. LOCATION OF EXISTING AND/OR PROPOSED FACILITIES:
 - A. A tank battery will be built on the well pad located in the NE/4SW/4, Sec 12, T-17S, R-29E.
 - B. There are powerlines on the lease, the closest pole being located approximately 605 feet west of the well location. The proposed electric powerline would be approximately 300 feet in length and run from the above referenced pole to a pole in the northwest corner of the well pad, which will have to be inserted. See Exhibit "E".
5. WATER SUPPLY: It is not planned to drill a water supply well. Water for leasehold operations will be purchased from a commercial water hauler.
6. CONSTRUCTION MATERIALS: Material for construction of the proposed new road and well pad will be obtained from either an existing approved caliche pit located on federal land in the SE/4 NE/4 of Section 14-17S-29E, or from the reserve pit.
7. WASTE DISPOSAL:
 - A. Drill cutting will be disposed of in the drilling pits.
 - B. Drilling fluids will be allowed to evaporate in the drilling pits until the pits are dry.

- C. Water produced during tests will be disposed of in the pits.
- D. Oil produced during tests will be produced into temporary test tanks.
- E. Trash, water, paper, garbage, and junk will be buried in a trash pit and covered with a minimum of 24 inches of dirt. All waste material will be contained to prevent scattering by the wind. Location of the trash pit is shown on Exhibit "D".
- F. All trash and debris will be buried or removed from the wellsite within 45 days after finishing each drilling and/or completion operation.

8. ANCILLARY FACILITIES: None anticipated.

9. WELLSITE LAYOUT: Refer to Exhibit "D" for direction orientation and access.

- A. The wellsite has been surveyed and an area has been staked and flagged.
- B. The dimensions and relative location of the drill pad and pit with respect to the well bore are shown on Exhibit "D".
- C. The location contains numerous sand dunes which will need to be leveled.
- D. The well pad will be surfaced with caliche.

10. RESTORATION OF SURFACE:

- A. After completion of drilling and/or completion operations, all equipment and other material not needed for operations will be removed. Pits will be filled and the location cleaned of all trash and junk to leave the wellsite in as aesthetically pleasing a condition as possible.
- B. Any unguarded pits containing fluids will be fenced until they are filled.
- C. After abandonment, all equipment, trash and junk will be removed and the location cleaned. Any special rehabilitation and/or special revegetation requirements of the BLM will be complied with and accomplished as expeditiously as possible.

11. OTHER INFORMATION:

- A. Topography: The undisturbed wellsite is at an elevation of 3649.1 feet. The terrain of the area surrounding the location is relatively flat. Regional slope is to the southwest toward the Pecos River.
- B. Soil: Top soil at the wellsite is silty loam.
- C. Land Use & Type: The vicinity surrounding the drillsite is semiarid rangeland and its primary use is for production of oil and gas.
- D. Flora: Flora in the vicinity surrounding the drillsite is sparse. It consists primarily of javalina, saltbush, broomweed and mesquite.
- E. Fauna: No wildlife was observed, however fauna for this type of habitat normally consists of lizards, snakes, rabbits, rodents, coyotes, skunks, quail, dove, and other small birds.
- F. Ponds & Streams: None.
- G. Water Wells: The nearest known water well is over 1 mile to the west.
- H. Residences & Other Structures: There are no occupied dwellings within one (1) mile of the proposed drillsite.
- I. Archaeological, Historical & Cultural Sites: An archaeological survey has been conducted by Pecos Archaeology Consultants and a formal report has been or will be furnished directly to BLM upon its completion.

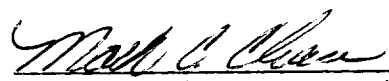
12. OPERATOR'S REPRESENTATIVE: Representatives responsible for assuring compliance with the approved Surface Use Plan:

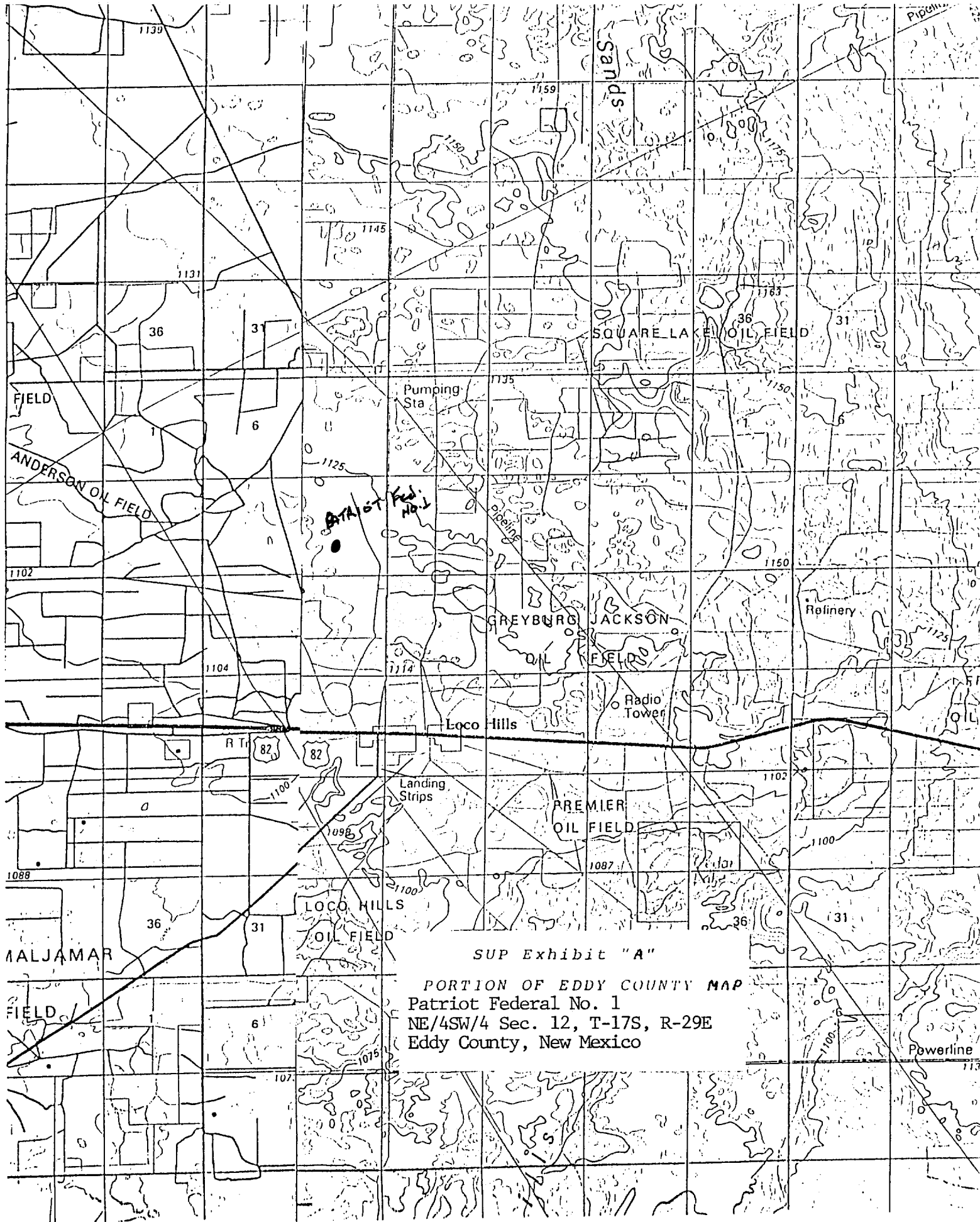
Mack Chase or John R. Gray
P. O. Drawer 217
Artesia, New Mexico 88210
Phone 505-748-3303

13. CERTIFICATION:

I hereby certify that I, or persons under my direct supervision, have inspected the proposed drillsite and access route; that I am familiar with the conditions which presently exist; that the statements made in this plan are, to the best of my knowledge true and correct; and, that the work associated with the operations proposed herein will be performed by MARBOB ENERGY CORPORATION and its sub-contractors in conformity with this plan and the terms and conditions under which it is approved.

2/14/91
Date


Mack C. Chase, President
MARBOB ENERGY CORPORATION



SUP Exhibit "A"

PORTION OF EDDY COUNTY MAP
Patriot Federal No. 1
NE/4SW/4 Sec. 12, T-17S, R-29E
Eddy County, New Mexico

[illegible]

lf)



PIPE RECOVERY
24 HOUR SERVICE

746-2753

2 Miles South Of Artesia On The Carlsbad Hwy.
Rt. 1, Box 182
Artesia, N.M. 88210

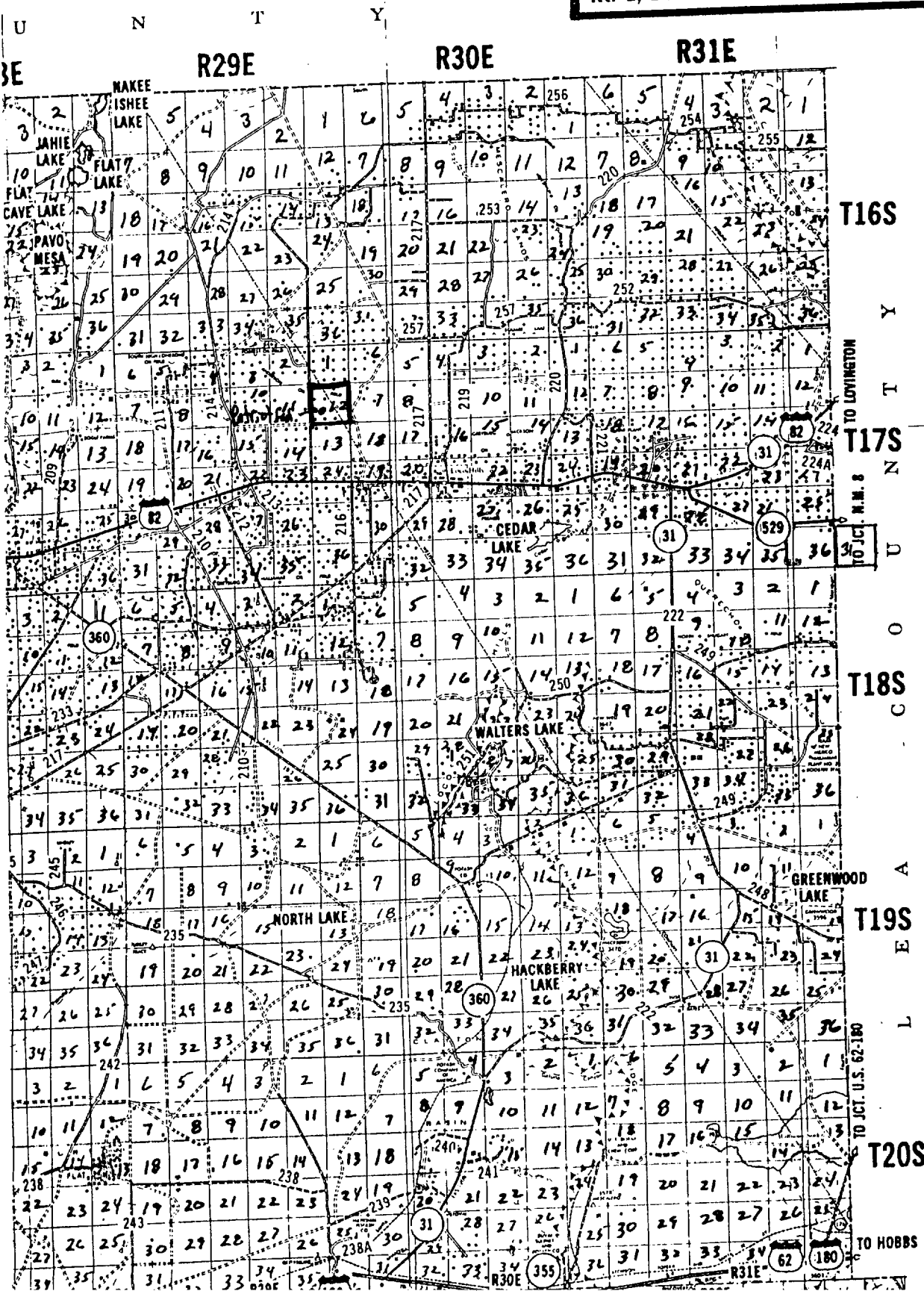
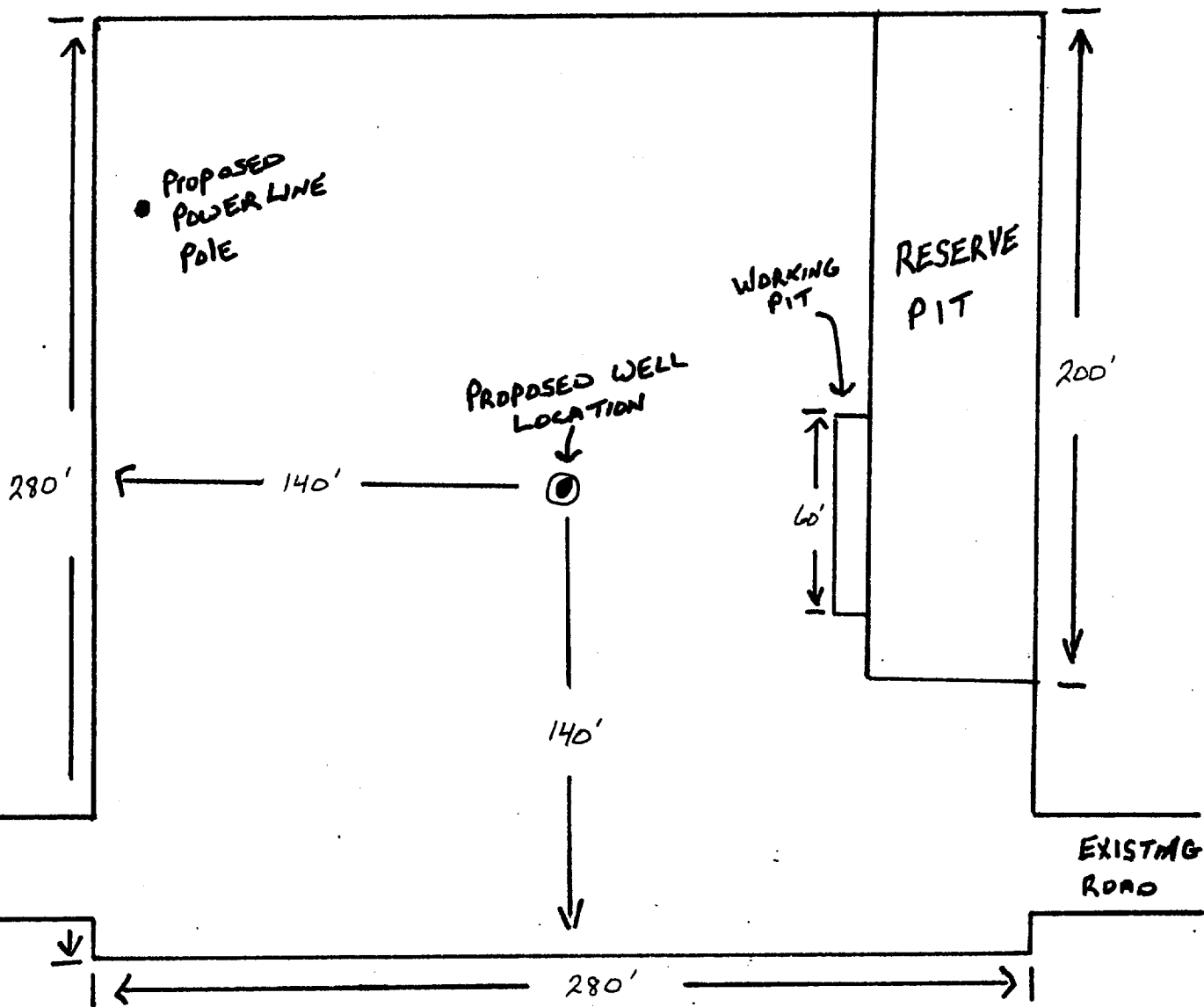
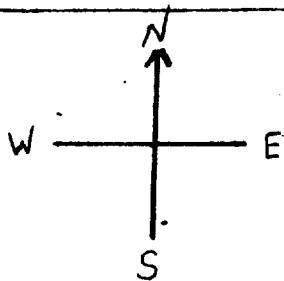


EXHIBIT C

Marbob Energy Corp
Patriot Federal No 1
NE/4SW/4, Sec. 12
T-17S, R-29E
Eddy County,
New Mexico



LEGEND

1 cm = 20 ft.

SUP Exhibit "D"

SKETCH OF PROPOSED WELL PAD
Marbob Energy Corporation
Patriot Federal No. 1
NE/4SW/4 Sec. 7, T-17S, R-29E
Eddy County, New Mexico

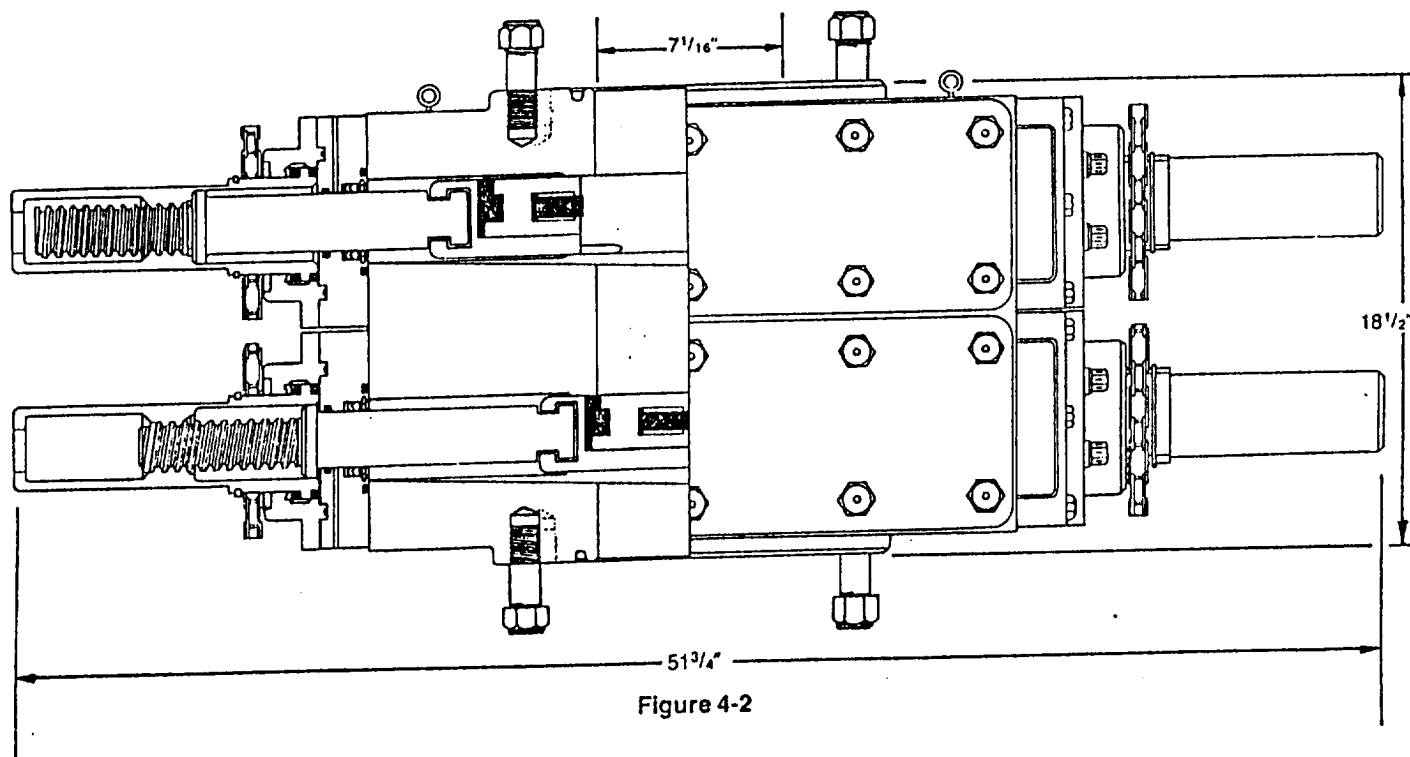


Figure 4-2

DIMENSIONS AND WEIGHTS

		Manual
Weight	Single (pounds)	1,272
	Double (pounds)	2,335
Overall height, less studs	Single (inches)	10
	Double (inches)	18 1/2
Overall length (inches)		51 3/4
Overall width, less handwheel (inches)		20 1/4
Opening through preventer (inches)		7 1/16
Working pressure (psi)		3,000
Test pressure (psi)		6,000
Handwheel diameter (inches)		20
Ring joint gasket API number		R-45

SUP Exhibit "E"
 Marbob Energy Corporation
 Patriot Federal No. 1
 NE/4SW/4, Sec. 7, T-17S,
 R-29E
 Eddy County, New Mexico