

Submit to Appropriate
District Office
State Lease - 4 copies
Fee Lease - 3 copies

State of New Mexico
Energy, Minerals and Natural Resources Department

Form C-102
Revised 1-1-89

OIL CONSERVATION DIVISION
P.O. Box 2088
Santa Fe, New Mexico 87504-2088

DISTRICT I
P.O. Box 1980, Hobbs, NM 88240

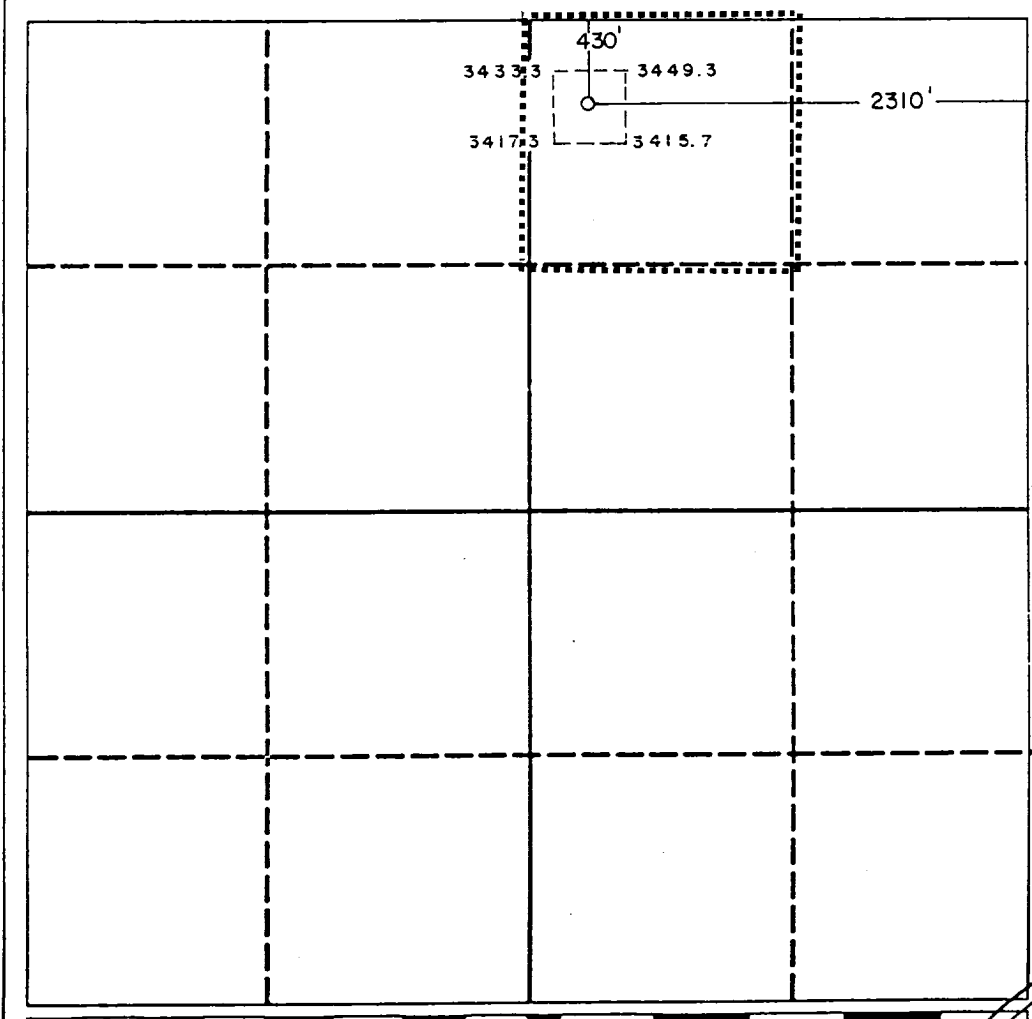
DISTRICT II
P.O. Drawer DD, Artesia, NM 88210

DISTRICT III
1000 Rio Brazos Rd., Aztec, NM 87410

WELL LOCATION AND ACREAGE DEDICATION PLAT
All Distances must be from the outer boundaries of the section

Operator GREAT WESTERN DRILLING CO.			Lease MABEL MABLE HALE FEDERAL		Well No. 8
Unit Letter B	Section 11	Township 19 SOUTH	Range 30 EAST	County EDDY	
Actual Footage Location of Well: 430 feet from the NORTH line and 2310 feet from the EAST line					
Ground level Elev. 3431.3	Producing Formation Yates-SR-Q-Grayburg		Pool Shugart	Dedicated Acreage: 40 Acres	

- Outline the acreage dedicated to the subject well by colored pencil or hatch marks on the plat below.
- If more than one lease is dedicated to the well, outline each and identify the ownership thereof (both as to working interest and royalty).
SINGLE LEASE
- If more than one lease of different ownership is dedicated to the well, have the interest of all owners been consolidated by communitization, unitization, force-pooling, etc.?
 Yes No If answer is "yes" type of consolidation NA
If answer is "no" list the owners and tract descriptions which have actually been consolidated. (Use reverse side of this form if necessary).
No allowable will be assigned to the well until all interests have been consolidated (by communitization, unitization, forced-pooling, or otherwise) or until a non-standard unit, eliminating such interest, has been approved by the Division.

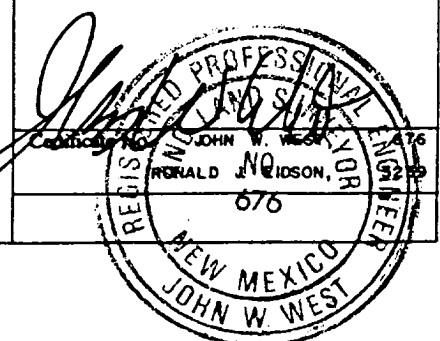


OPERATOR CERTIFICATION
I hereby certify that the information contained herein is true and complete to the best of my knowledge and belief.

Signature: *Jerry W. Long*
Printed Name: JERRY W. LONG
Position: Permit Agent
Company: GREAT WESTERN DRILLING CO.
Date: June 15, 1991

SURVEYOR CERTIFICATION
I hereby certify that the well location shown on this plat was plotted from field notes of actual surveys made by me or under my supervision, and that the same is true and correct to the best of my knowledge and belief.

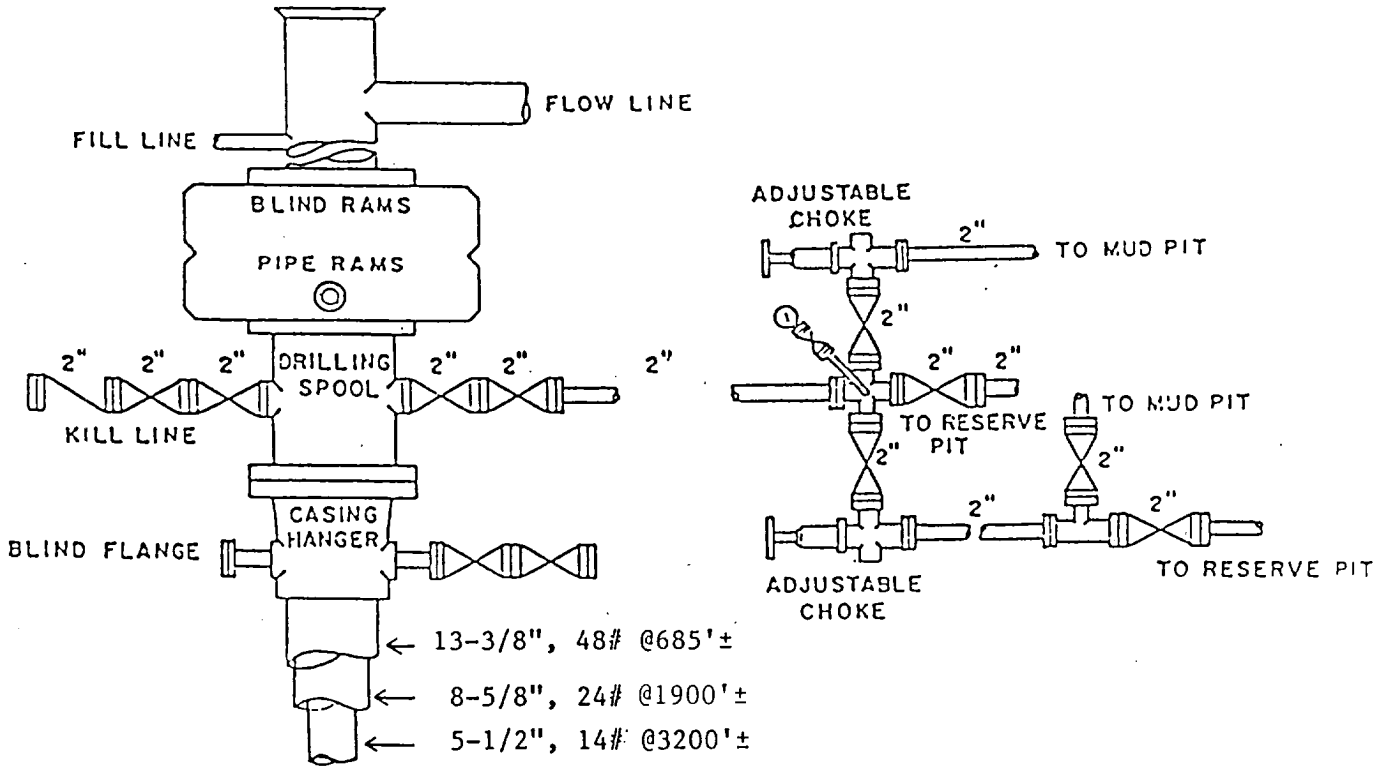
Date Surveyed: 5-28-91
Signature & Seal of Professional Surveyor: *[Signature]*



128630

GREAT WESTERN DRILLING COMPANY
 No.8 Mabel Hale Federal
 NWN Sec.11-19S-30E
 Eddy County, N.M.

NM-0560353

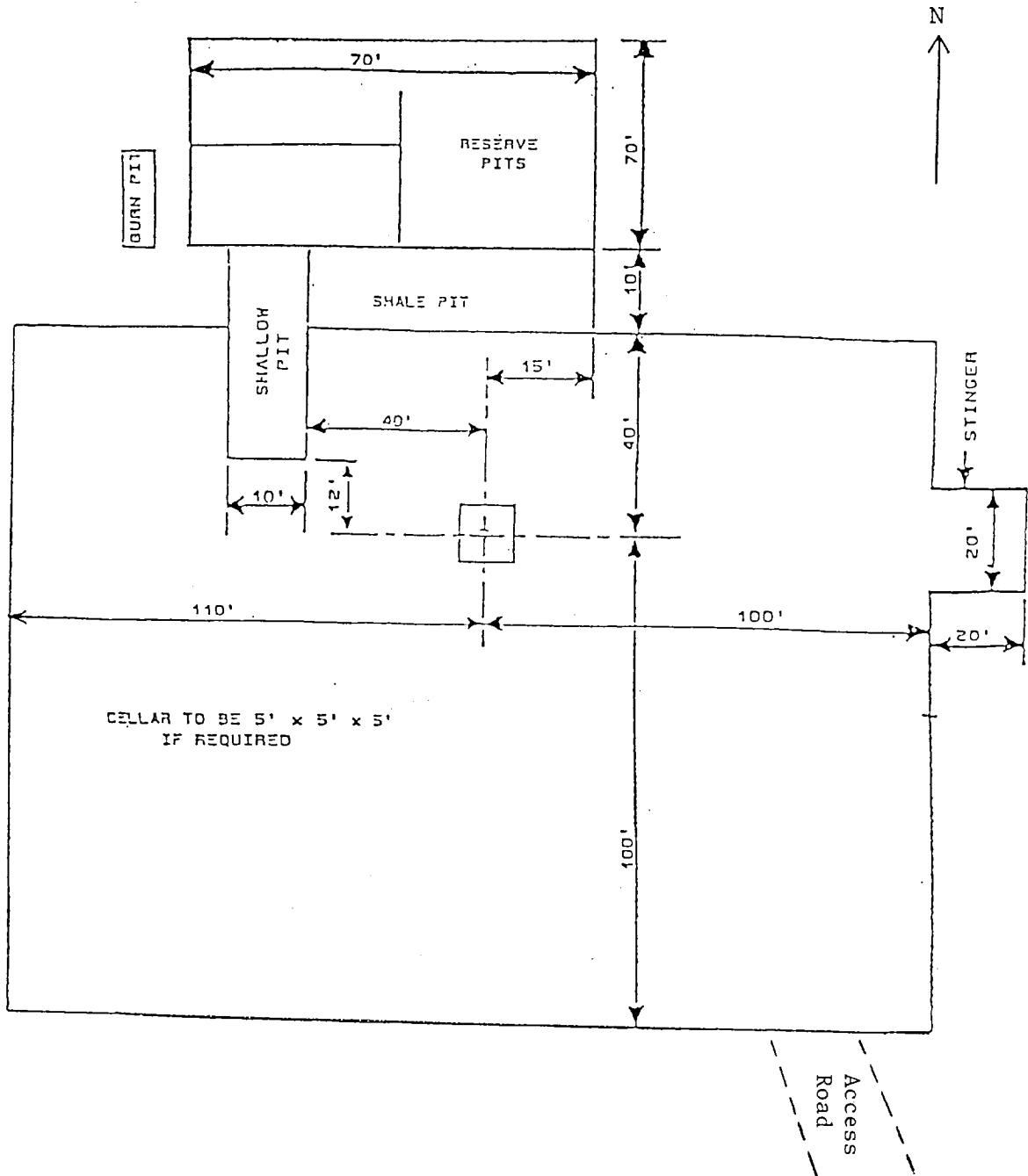


BOP DIAGRAM

2000# Working Pressure
 Rams Operated Daily

GREAT WESTERN DRILLING COMPANY
No.8 Mabel Hale Federal
NWNE Sec.11-19S-30E
Eddy County, N.M.

NM-0560353



DRILLPAD LAYOUT