

UNITED STATES  
DEPARTMENT OF THE INTERIOR  
BUREAU OF LAND MANAGEMENT

APPLICATION FOR PERMIT TO DRILL, DEEPEN, OR PLUG BACK

1a. TYPE OF WORK

DRILL ☒

DEEPEN ☐

PLUG BACK ☐

b. TYPE OF WELL

OIL WELL ☒

GAS WELL ☐

OTHER ☐

SINGLE ZONE ☐

MULTIPLE ZONE ☐

2. NAME OF OPERATOR

Yates Petroleum Corporation

3. ADDRESS OF OPERATOR

105 South Fourth Street, Artesia, New Mexico 88210

4. LOCATION OF WELL (Report location clearly and in accordance with any State requirements.)\*

At surface  
1780' FSL and 760' FWL; Unit Letter L

At proposed prod. zone

Same

14. DISTANCE IN MILES AND DIRECTION FROM NEAREST TOWN OR POST OFFICE\*

Approximately 32 miles southwest of Artesia, New Mexico

15. DISTANCE FROM PROPOSED\*

LOCATION TO NEAREST  
PROPERTY OR LEASE LINE, FT.  
(Also to nearest drlg. unit line, if any)

18. DISTANCE FROM PROPOSED LOCATION\*

TO NEAREST WELL, DRILLING, COMPLETED,  
OR APPLIED FOR, ON THIS LEASE, FT.

16. NO. OF ACRES IN LEASE

19. PROPOSED DEPTH

8200'

17. NO. OF ACRES ASSIGNED  
TO THIS WELL

320

20. ROTARY OR CABLE TOOLS

Rotary

21. ELEVATIONS (Show whether DF, RT, GR, etc.)

3678' GR

22. APPROX. DATE WORK WILL START\*

ASAP

23.

PROPOSED CASING AND CEMENTING PROGRAM

SIZE OF HOLE	SIZE OF CASING	WEIGHT PER FOOT	SETTING DEPTH	QUANTITY OF CEMENT
14 3/4"	9 5/8"	36# J-55	1100'	1100 sacks (circulated)
8 3/4"	7"	23 & 26#	TD	As warranted (see slips)
		J-55 & N-80		

Yates Petroleum Corporation proposes to drill and test the Canyon and intermediate formations. Approximately 1100' of surface casing will be set and cement circulated to shut off gravel and cavings. If commercial, production casing will be run and cemented, will perforate and stimulate as needed for production.

MUD PROGRAM: FW Gel/LCM to 1100'; FW to 5000'; cut Brine to 7200'; SW gel/Starch to TD.

BOP PROGRAM: BOP's and hydril will be installed on the 9 5/8" casing and tested daily.

Location moved to 1780' FSL and 760' FWL per BLM inspection by BLM and Yates.

IN ABOVE SPACE DESCRIBE PROPOSED PROGRAM: If proposal is to deepen or plug back, give data on present productive zone and proposed new productive zone. If proposal is to drill or deepen directionally, give pertinent data on subsurface locations and measured and true vertical depths. Give blowout preventer program, if any.

24.

SIGNED

*[Signature]*

TITLE

Landman

DATE

8-13-92

(This space for Federal or State office use)

PERMIT NO.

APPROVAL DATE

APPROVED BY

TITLE

DATE

10-1-92

CONDITIONS OF APPROVAL, IF ANY:

APPROVAL SUBJECT TO

GENERAL REQUIREMENTS AND

SPECIAL STIPULATIONS

ATTACHED

\*See Instructions On Reverse Side

Title 18 U.S.C. Section 1001, makes it a crime for any person knowingly and willfully to make to any department or agency of the United States any false, fictitious or fraudulent statements or representations as to any matter within its jurisdiction.

## OIL CONSERVATION DIVISION

DISTRICT I  
P.O. Box 1980, Hobbs, NM 88240

P.O. Box 2088  
Santa Fe, New Mexico 87504-2088

**DISTRICT II**  
P.O. Drawer DD, Artesia, NM 88210

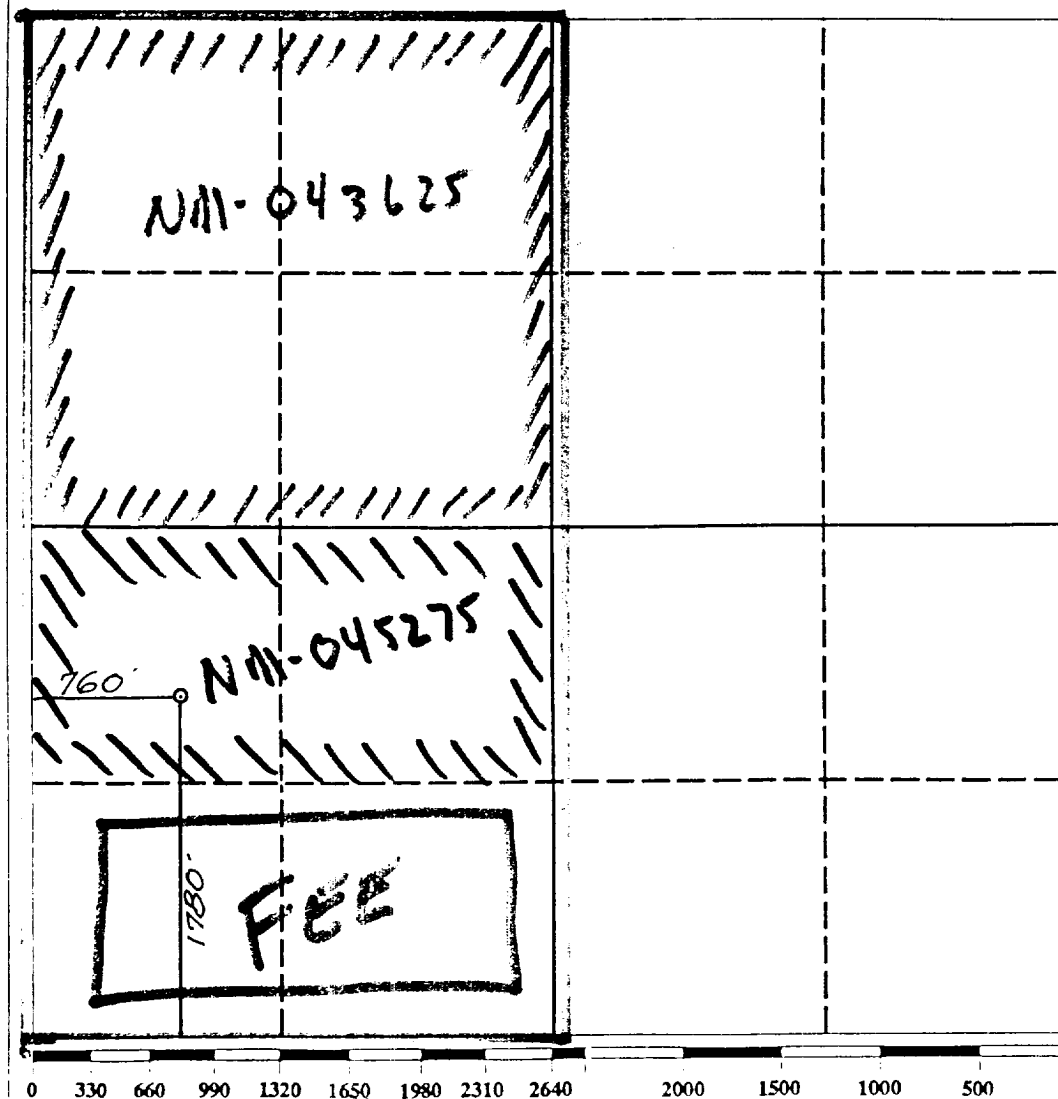
**DISTRICT III**  
1000 Rio Brazos Rd., Aztec, NM 87410

# WELL LOCATION AND ACREAGE DEDICATION PLAT

**All Distances must be from the outer boundaries of the section**

Operator <b>YATES PETROLEUM CORPORATION</b>			Lease <b>CONOCO "AGK" FEDERAL COM</b>		Well No. <b>13</b>
Unit Letter <b>L</b>	Section <b>26</b>	Township <b>20 SOUTH</b>	Range <b>24 EAST</b>	County <b>NMPM</b>	<b>EDDY COUNTY, NM</b>
Actual Footage Location of Well:					
<b>1780</b> feet from the <b>SOUTH</b> line and		<b>760</b> feet from the <b>WEST</b> line			
Ground level Elev. <b>3678.</b>	Producing Formation <b>CISCO CANYON</b>		Pool <b>S. DAGGER DRAW UPPER PENN</b>		Dedicated Acreage: <b>320</b> Acres

1. Outline the acreage dedicated to the subject well by colored pencil or hatchure marks on the plat below.
2. If more than one lease is dedicated to the well, outline each and identify the ownership thereof (both as to working interest and royalty).
3. If more than one lease of different ownership is dedicated to the well, have the interest of all owners been consolidated by communitization, unitization, force-pooling, etc.?
- ☒ Yes      ☐ No      If answer is "yes" type of consolidation Communitization
- If answer is "no" list the owners and tract descriptions which have actually been consolidated. (Use reverse side of this form if necessary.)
- No allowable will be assigned to the well until all interests have been consolidated (by communitization, unitization, forced-pooling, or otherwise) or until a non-standard unit, eliminating such interest, has been approved by the Division.



### OPERATOR CERTIFICATION

I hereby certify that the information contained herein is true and complete to the best of my knowledge and belief.

Signature

Printed Name \_\_\_\_\_

Position

Company	
---------	--

Date \_\_\_\_\_

### SURVEYOR CERTIFICATION

I hereby certify that the well location shown on this plat was plotted from field notes of actual surveys made by me or under my supervision, and that the same is true and correct to the best of my knowledge and belief.

Date Surveyed \_\_\_\_\_

AUGUST 5, 1992

Signature & Seal of Professional Surveyor

NEW MEX



11

5119

RE 5412

1931

1322

Certificate No. SURV

CONFIDENTIAL SURV

NM ~~RE&PS~~ NO.

CONFESS

**YATES PETROLEUM CORPORATION**

**Conoco "AGK" Federal #13**  
**1780' FSL and 760' FWL**  
**Section 26-T20S-R24E**  
**Eddy County, New Mexico**

In conjunction with Form 3160-3, Application for Permit to Drill subject well, Yates Petroleum Corporation submits the following ten items of pertinent information in accordance with BLM requirements.

1. The geological surface formation is Alluvium:
2. The estimated tops of geologic markers are as follows:

San Andres	577'
Glorieta	2,119'
Bone Spring Lime	3,465'
3rd Bone Springs Sand	5,590'
Abo Green	5,900'
Wolfcamp Lime	6,190'
Canyon Lime	7,519'
Dolomite	7,566'
Base Dolomite	7,807'
TD	8,150'
3. The estimated depths at which anticipated water, oil or gas formations are expected to be encountered:

Water:	Approximately 250'
Oil or Gas:	Canyon
4. Proposed Casing Program: See Form 3160-3.
5. Pressure Control Equipment: See Form 3160-3 and Exhibit B.
6. Mud Program: See Form 3160-3.
7. Auxiliary Equipment: Kelly Cock; pit level indicators and flow sensor equipment; sub with full-opening valve on floor, drill pipe connections.
8. Testing, Logging and Coring Program:

Samples: 10' samples from 400' to TD.

DST's: As warranted by drilling breaks and shows.

Coring: As warranted.

Logging: CNL-LDT from TD to casing, with GR-CNL up to surface;  
DLL with RxO from TD to casing.
9. No abnormal pressures or temperatures are anticipated. No H<sub>2</sub>S expected during drilling operations.
10. Anticipated starting date: As soon as possible after approval.

**Drilling Plan**  
**YATES PETROLEUM CORPORATION**  
**Conoco AGK Federal #13**  
**1780' FSL and 760' FWL**  
**Section 26-T20S-R24E**  
**Eddy County, New Mexico**

Anticipated Drilling Time 17 days.

Hole Size: 14 3/4"      Depth To: 1150'      Casing Size: 9 5/8"      Setting Depth: 1150'

Casing Description: 9 5/8", 36#, 8R, J55, ST&C.

Cement Slurry: 700 sx. "Class C Lite" w/1/2# Cellocel, 10# Gilsonite and 3% CaCl<sub>2</sub>. Wt 12.7 yield 1.84 + 200 sx. "Class C" and 2% CaCl<sub>2</sub>. Wt. 14.8 yield 1.32. Cement circulated to surface.

All casing in New Minimum Design Factors: Collapse 1.125, Burst 1.0, Tensile Str. 1.80.

Hole size: 8 3/4"      Depth To: 8200'      Casing Size 7"      Setting Depth: 8200'

Casing Description: 0 - 600', 7", 26#, N-80, 8R, LT&C, 600' - 3200', 7", 26#, J55, 8R, LT&C, 3200' - 6950', 7", 23#, J-55, 8R, LT&C, 6950' - 8200', 7", 26#, J55, 8R, LT&C.

All casing is New Minimum Design Factors: Tensile Strength 1.8, collapse 1.125, Burst 1.0

Cement Slurry: Will be cemented in two stages. Stage Tool set approximately 5500'.

First stage: 500 gals sure bond, 500 gals - WMWI, 700 sx. "Class H" w/5# sack CSE, .659.

CF-14, 1/2# Cellocel & 10# Gilsonite. Wt. 15.1, yield 1.34. Calculated to fill 2700 linear feet.

Second stage: 775 sx "Lite C" w/4% CF-14, 5# sack Salt. Wt. 12.4 yield 1.98. Tail w/100 sx. "H" neat Wt. 15.6. Yield 1.18, circulated to surface.

All casing is New Minimum Design Factors: Collapse 1.125, Burst 1.0, Tensile 1.80.

**Anticipated Drilling Mud Program:**

From spud to 1150' Minimum Properties: Mud Weight 8.6 - 9.6. Viscosity 32 sec./1000cc. Water loss N/C cc. Mud will be checked tourly by rig personnel. Sufficient quantities of mud will be kept on location to maintain minimum properties.

From 1150' to 4500' Fresh Water. Mud weight 8.4. Viscosity 28 sec./1000 cc mud. Water loss - No control. Mud to be checked tourly by rig personnel. Sufficient quantities of mud on hand to maintain mud properties listed.

From 4500' to 8200' Cut Brine, Mud weight 9.1 - 9.4 ppg. Viscosity 28 sec./1000cc. WL - No control. Mud to be checked tourly by rig personnel. Sufficient quantities of mud on hand to maintain minimum properties listed.

**Drilling Plan**  
**Conoco AGK Federal #13**  
**Page 2**

**Anticipated BHP:**

From:	<u>-0-</u>	TO	<u>1150</u>	Anticipated Max. BHP:	<u>500</u>	PSI
From:	<u>1150</u>	TO	<u>8200</u>	Anticipated Max. BHP:	<u>2500</u>	PSI

Abnormal Pressures Anticipated: None

Lost Circulation zones anticipated: Spud - 1150'.

H2S Zones Anticipated: H2S present in Canyon formation. Mud hydrastatic suppresses H2S during drilling.

Maximum Bottom Hole Temperature: 145<sup>o</sup> F

## **MULTI-POINT SURFACE USE AND OPERATIONS PLAN**

**Yates Petroleum Corporation**

**Conoco "AGK" Federal #13**

**1780' FSL and 760' FWL**

**Section 26-T20S-R24E**

**Eddy County, New Mexico**

This plan is submitted with Form 3160-3, Application for Permit to Drill, covering the above described well. The purpose of this plan is to describe the location of the proposed well, the proposed construction activities and operations plan, the magnitude of the surface disturbance involved and the procedures to be followed in rehabilitating the surface after completion of the operations, so that a complete appraisal can be made of the environmental effect associated with the operations.

### **1. EXISTING ROADS:**

Exhibit A is a portion of BLM map showing the well and roads in the vicinity of the proposed location. The proposed wellsite is located approximately 32 miles southwest of Artesia, New Mexico, and the access route to the location is indicated in red and green on Exhibit A.

#### **DIRECTIONS:**

1. Go south of Artesia on Highway 285 for approximately 15 miles.
2. Turn west on Rock Daisy Road for 8.2 miles..
3. Turn south on Sawbucks Road for approximately 3.4 miles to Pickett Road..
4. Turn east for approximately 1 mile.
5. Turn south on lease road for approximately 1.2 miles.
6. Turn west for .2 of a mile.
7. New road starts here.

### **2. PLANNED ACCESS ROAD**

- A. The proposed new access will be approximately 1500' in length from point of origin to the southeast edge of drilling pad. The road will lie in a north to south direction.
- B. The new road will be 14 feet in width (driving surface) and will be adequately drained to control runoff and soil erosion.
- C. The new road will be bladed with drainage on sone side. No traffic turnout will be built.
- D. The route of the road is visible.

### **3. LOCATION OF EXISTING WELL**

- A. There is drilling activity within a one-mile radius of the wellsite.
- B. Exhibit D shows existing wells within a one-mile radius of the proposed wellsite.

### **4. LOCATION OF EXISTING AND/OR PROPOSED FACILITIES**

- A. There are production facilities on this lease at the present time.
- B. In the event that the well is productive oil, a gas or diesel self-contained unit will be used to provide the necessary power. No power will be required if the well is productive of gas.

5. LOCATION AND TYPE OF WATER SUPPLY:

- A. It is planned to drill the proposed well with a fresh water system. The water will be obtained from commercial sources and will be hauled to the location by truck over the existing and proposed roads shown in Exhibit A.

6. SOURCE OF CONSTRUCTION MATERIALS:

Private pit located in Section 22-T20S-R24E or the dirt contractor will acquire any material needed for location and road.

7. METHODS OF HANDLING WASTE DISPOSAL:

- A. Drill cuttings will be disposed of in the reserve pits.
- B. Drilling fluids will be allowed to evaporate in the reserve pits until the pits are dry.
- C. Water produced during operations will be collected in tanks until hauled to an approved disposal system, or separate disposal application will be submitted.
- D. Oil produced during operations will be stored in tanks until sold.
- E. Current laws and regulations pertaining to the disposal of human waste will be complied with.
- F. All trash, junk, and other waste materials will be contained in trash cages or bins to prevent scattering and will be removed and deposited in an approved sanitary land fill. Burial on site is not approved.

8. ANCILLARY FACILITIES:

- A. A 3" steel buried flowline to the Saguaro #3 battery, approximately 3000' in length, 30' wide right-of-way. (On Plat)
- B. A 3 phase, 480 volt, raptor proof powerline, 25' wide and approximately 3000' in length. (On Plat)

9. WELLSITE LAYOUT:

- A. Exhibit C shows the relative location and dimensions of the well pad, the reserve pits, the location of the drilling equipment, rig orientation and access road approach. A cross section of a drill pad with approximate cuts, fills and pad orientation is shown on Exhibit E.
- B. The reserve pits will be plastic lined.
- C. A 400' x 400' area has been staked and flagged.

10. PLANS FOR RESTORATION

- A. After finishing drilling and/or completion operations, all equipment and other material not needed for further operations will be removed. The location will be cleaned of all trash and junk to leave the wellsite in as aesthetically pleasing a condition as possible.
- B. Unguarded pits, if any, containing fluids will be fenced until they have dried and been levelled.
- C. If the proposed well is non-productive, all rehabilitation and/or vegetation requirements of the BLM will be complied with and will be accomplished as expeditiously as possible. All pits will be filled level within 90 days after abandonment.

11. SURFACE OWNERSHIP: BLM (Carlsbad, NM)

12. OTHER INFORMATION:

- A. Topography: Refer to the existing archaeological report for a description of the topography, flora, fauna, soil characteristics, dwellings, historical and cultural sites.
- B. The primary surface use is for grazing.

13. OPERATOR'S REPRESENTATIVE

A. Through A.P.D. Approval:

Ken Beardemphi, Landman  
Yates Petroleum Corporation  
105 South Fourth Street  
Artesia, New Mexico 88210  
Phone (505) 748-1471

B. Through Drilling Operations,  
Completions and Production:

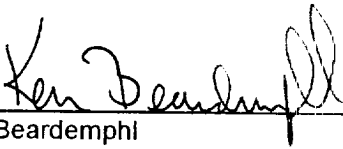
Mike Slater, Operations Manager  
Yates Petroleum Corporation  
105 South Fourth Street  
Artesia, New Mexico 88210  
Phone (505) 748-1471

14. CERTIFICATION:

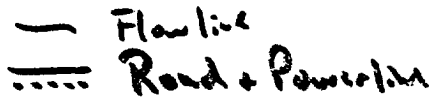
I hereby certify that I, or persons under my direct supervision, have inspected the proposed drillsite and access route, that I am familiar with the conditions which presently exist; that the statements made in this plan are to the best of my knowledge, true and correct; and , that the work associated with the operations proposed herein will be performed by Yates Petroleum Corporation and its contractors and subcontractors in conformity with this plan and the terms and conditions under which it is approved. This statement is subject to the provisions of 18 U.S.C. 1001 for the filing of a false statement.

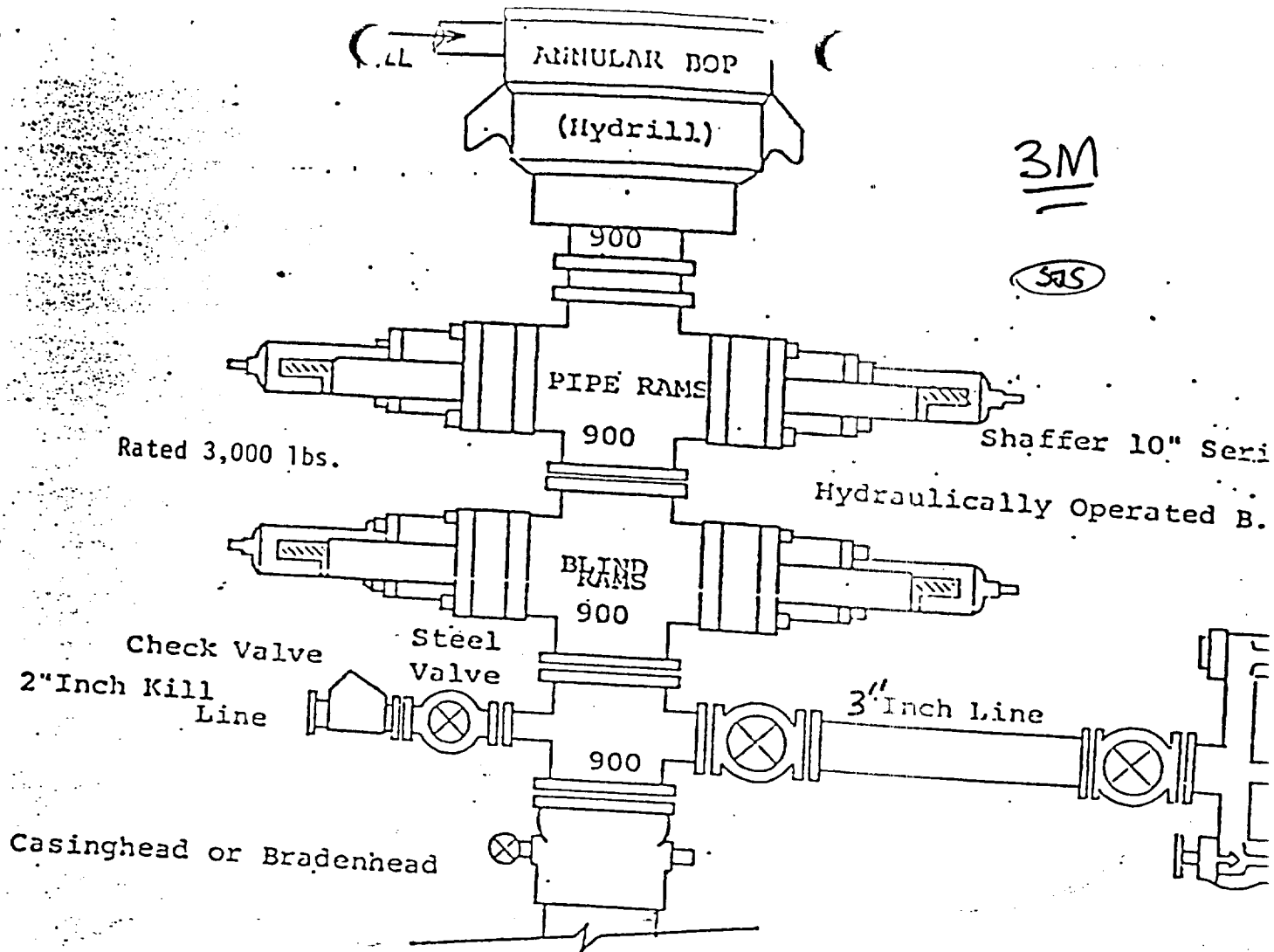
8-13-92

\_\_\_\_\_  
Date

  
\_\_\_\_\_  
Ken Beardemphi  
Landman





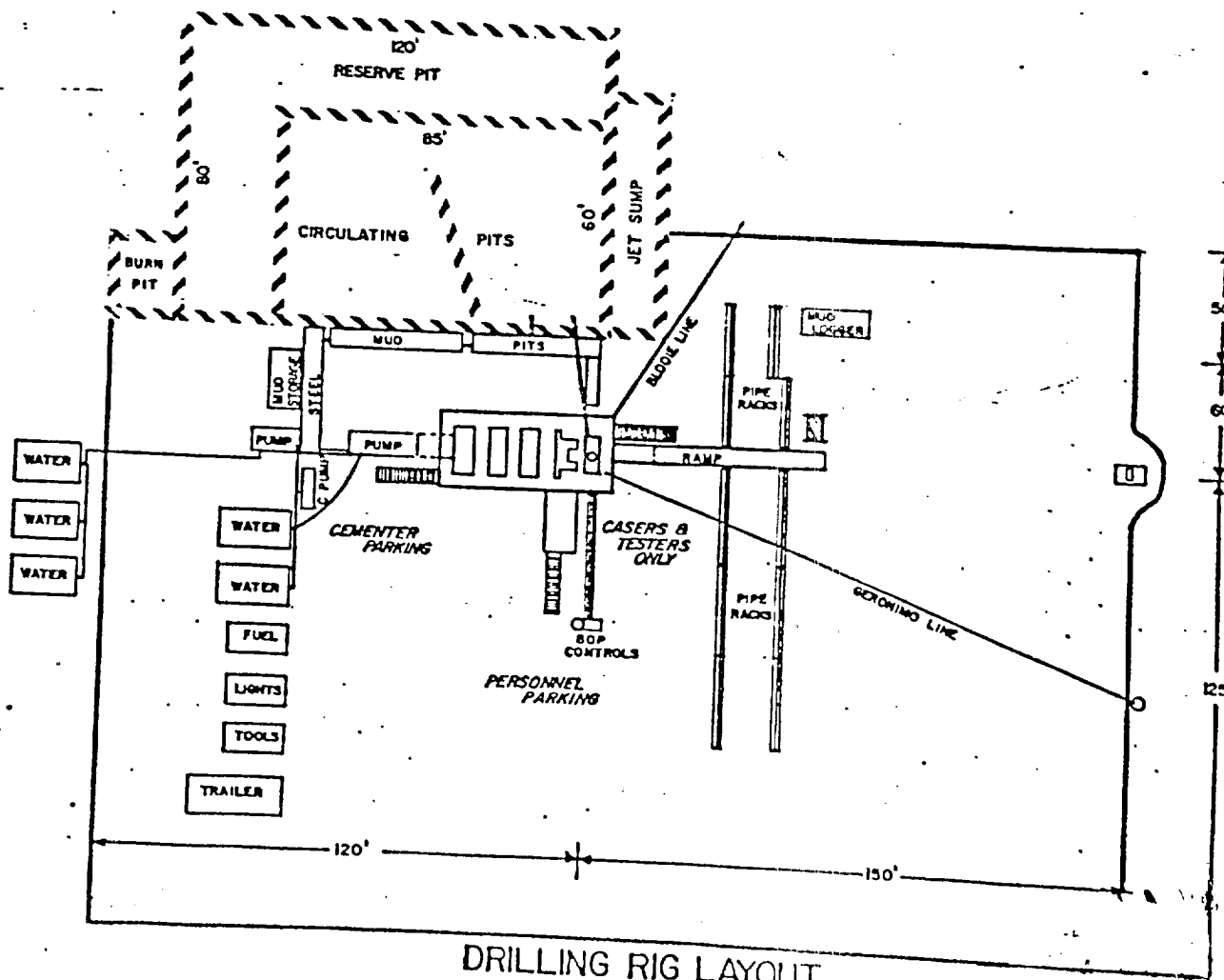


THE FOLLOWING CONSTITUTE MINIMUM BLOWOUT PREVENTER REQUIREMENTS

1. All preventers to be hydraulically operated with secondary manual installed prior to drilling out from under casing.
2. Choke outlet to be a minimum of 3" diameter.
3. Kill line to be of all steel construction of 2" minimum diameter.
4. All connections from operating manifolds to preventers to be all steel hole or tube a minimum of one inch in diameter.
5. The available closing pressure shall be at least 15% in excess of that required with sufficient volume to operate the B.O.P.'s.
6. All connections to and from preventer to have a pressure rating equal to that of the B.O.P.'s.
7. Inside blowout preventer to be available on rig floor.
8. Operating controls located a safe distance from the rig floor.
9. Hole must be kept filled on trips below intermediate casing.

EXHIBIT  
B

# YATES PETROLEUM CORPORATION



DRILLING RIG LAYOUT

Scale: 1 inch = 50 feet

Exhibit C

**Yates Petroleum Corporation**  
105 SOUTH 4th STREET  
ARTESIA, NEW MEXICO 88210

Conoco "AGK" Federal #13  
1780' FSL and 760' FWL  
Section 26-T20S-R24E  
Eddy County, New Mexico

Exhibit D

