

Submit to Appropriate
District Office
State Lease - 6 copies
Fee Lease - 5 copies

State of New Mexico
Energy, Minerals and Natural Resources Department

Form C-101
Revised 1-1-89

OIL CONSERVATION DIVISION

DISTRICT I
P.O. Box 1980, Hobbs, NM 88240

DISTRICT II
P.O. Drawer DD, Artesia, NM 88210

DISTRICT III
1000 Rio Brazos Rd., Aztec, NM 87410

P.O. Box 2088
Santa Fe, New Mexico 87504-2088

Application Expired

A.C.D.

API NO. (assigned by OCD on New Wells)
30-015-27183

5. Indicate Type of Lease
STATE ☒ FEE ☐

6. State Oil & Gas Lease No.
VB-407

APPLICATION FOR PERMIT TO DRILL, DEEPEN, OR PLUG BACK					
1a. Type of Work: DRILL <input checked="" type="checkbox"/> RE-ENTER <input type="checkbox"/> DEEPEN <input type="checkbox"/> PLUG BACK <input type="checkbox"/>			7. Lease Name or Unit Agreement Name Warthog "2" State		
b. Type of Well: OIL WELL <input checked="" type="checkbox"/> GAS WELL <input type="checkbox"/> OTHER <input type="checkbox"/> SINGLE ZONE <input type="checkbox"/> MULTIPLE ZONE <input type="checkbox"/>			8. Well No. 5		
2. Name of Operator Santa Fe Energy Operating Partners, L.P. ✓			9. Pool name or Wildcat Loving, East (Delaware)		
3. Address of Operator 550 W. Texas, Suite 1330, Midland, Texas 79701			10. Proposed Depth 6500'		
4. Well Location Unit Letter 0 : 660 Feet From The South Line and 1980 Feet From The East Line Section 2 Township 23S Range 28E NMPM Eddy County			11. Formation Delaware		
13. Elevations (Show whether DF, RT, GR, etc.) 3075.0' GR			12. Rotary or C.T. Rotary		
14. Kind & Status Plug Bond Blanket - current			15. Drilling Contractor To be determined		
16. Approx. Date Work will start 11/15/92			17. PROPOSED CASING AND CEMENT PROGRAM		
SIZE OF HOLE	SIZE OF CASING	WEIGHT PER FOOT	SETTING DEPTH	SACKS OF CEMENT	EST. TOP
12-1/4"	8-5/8"	24.0	400'	200 sx	Circulate
7-7/8"	5-1/2"	15.5	6500'	1500 sx	Surface

Move on location and rig up. Spud 12-1/4" hole and drill to ±400'. Run 8-5/8" casing and cement with sufficient Class "C" containing 2% CaCl₂ to circulate to surface. WOC 4 hours prior to cut-off and weld on 8-5/8" casing head and NU 11" x 3000 psi BOP stack to consist of an annular preventer, double ram preventer and choke manifold. Test casing to 600 psi and BOP stack to 1500 psi. Drill 7-7/8" hole to 6500'. Log, run 5-1/2" casing and cement in two stages with stage collar at ±3000' utilizing Class "C" cement to bring cement top to the surface.

Post ID-1
11-6-92
New loc & API

APPROVAL VALID FOR 180 DAYS
PERMIT EXPIRES 6-4-93
UNLESS DRILLING UNDERWAY

IN ABOVE SPACE DESCRIBE PROPOSED PROGRAM: IF PROPOSAL IS TO DEEPEN OR PLUG BACK, GIVE DATA ON PRESENT PRODUCTIVE ZONE AND PROPOSED NEW PRODUCTIVE ZONE. GIVE BLOWOUT PREVENTER PROGRAM, IF ANY.

I hereby certify that the information above is true and complete to the best of my knowledge and belief.

SIGNATURE Darrell Roberts TITLE Sr. Drilling Engineer DATE Nov. 3, 1992
TYPE OR PRINT NAME Darrell Roberts TELEPHONE NO. 915/687-3551

(This space for State Use)

APPROVED BY Mark Bohlen TITLE Permit ID-1 DATE NOV 4 1992
CONDITIONS OF APPROVAL, IF ANY:

Application Expired

Submit to Appropriate
District Office
State Lease - 4 copies
Fee Lease - 3 copies

State of New Mexico
Energy, Minerals and Natural Resources Department

Form C-102
Revised 1-1-89

OIL CONSERVATION DIVISION

P.O. Box 2088
Santa Fe, New Mexico 87504-2088

DISTRICT I
P.O. Box 1980, Hobbs, NM 88240

DISTRICT II
P.O. Drawer DD, Artesia, NM 88210

DISTRICT III
1000 Rio Brazos Rd., Artec, NM 87410

WELL LOCATION AND ACREAGE DEDICATION PLAT

All Distances must be from the outer boundaries of the section

Operator SANTA FE ENERGY OPERATING PARTNERS L.P.			Lease WARTHOG "2" STATE		Well No. 5
Unit Letter 0	Section 2	Township 23 SOUTH	Range 28 EAST	County EDDY	
Actual Footage Location of Well: 660 feet from the SOUTH line and 1980 feet from the EAST line					
Ground Level Elev. 3075.0'	Producing Formation Delaware		Pool Loving, East (Delaware)		Dedicated Acreage: 40 Acres

1. Outline the acreage dedicated to the subject well by colored pencil or hachure marks on the plat below.

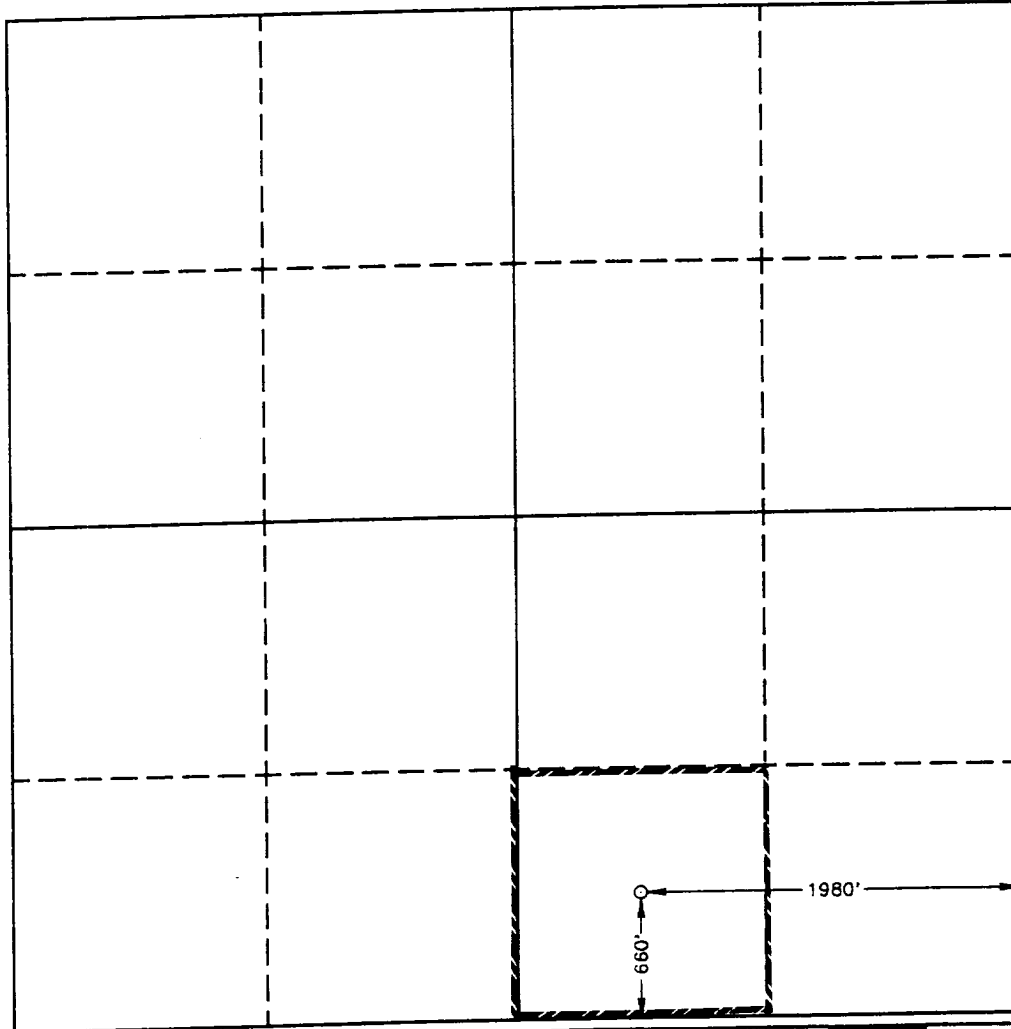
2. If more than one lease is dedicated to the well, outline each and identify the ownership thereof (both as to working interest and royalty).

3. If more than one lease of different ownership is dedicated to the well, have the interest of all owners been consolidated by communitization, unitization, force-pooling, etc.?

☐ Yes ☐ No If answer is "yes" type of consolidation _____

If answer is "no" list of owners and tract descriptions which have actually been consolidated. (Use reverse side of this form necessary.) _____

No allowable will be assigned to the well unit all interests have been consolidated (by communitization, unitization, forced-pooling, otherwise) or until a non-standard unit, eliminating such interest, has been approved by the Division.



OPERATOR CERTIFICATION

I hereby certify the the information contained herein is true and complete to the best of my knowledge and belief.

Signature

Darrell Roberts

Printed Name

Darrell Roberts

Position

Sr. Drilling Engineer

Company Santa Fe Energy Operating Partners, L.P.

Date

November 3, 1992

SURVEYOR CERTIFICATION

I hereby certify that the well location shown on this plat was plotted from field notes of actual surveys made by me or under my supervision, and that the same is true and correct to the best of my knowledge and belief.

Date Surveyed

OCTOBER 27, 1992

Signature & Seal of Professional Surveyor

