

UNITED STATES  
DEPARTMENT OF THE INTERIOR  
BUREAU OF LAND MANAGEMENT

SUBMIT IN TRIPLICATE\*  
(Other instructions on  
reverse side)

Form approved.  
Budget Bureau No. 1004-0136  
Expires: December 31, 1991

30-015-27230

APPLICATION FOR PERMIT TO DRILL OR DEEPEN

1a. TYPE OF WORK DRILL <input checked="" type="checkbox"/> DEEPEN <input type="checkbox"/>			5. LEASE DESIGNATION AND SERIAL NO. NMNM 89053		
b. TYPE OF WELL OIL WELL <input checked="" type="checkbox"/> GAS WELL <input type="checkbox"/> OTHER <input type="checkbox"/>			6. IF INDIAN, ALLOTTED OR TRIBE NAME		
2. NAME OF OPERATOR BTA Oil Producers			7. UNIT AGREEMENT NAME		
3. ADDRESS AND TELEPHONE NO. 104 S. Pecos, Midland, TX 79701 915-682-3753			8. FARM OR LEASE NAME, WELL NO., Lusk, -B-, 9209 #1		
4. LOCATION OF WELL (Report location clearly and in accordance with any State requirements.) At surface 1980' FSL & 1980' FEL At proposed prod. zone			9. API WELL NO.		
14. DISTANCE IN MILES AND DIRECTION FROM NEAREST TOWN OR POST OFFICE* 55 miles west from Hobbs			10. FIELD AND POOL, OR WILDCAT Lusk, Delaware		
10. DISTANCE FROM PROPOSED* LOCATION TO NEAREST PROPERTY OR LEASE LINE, FT. (Also to nearest drlg. unit line, if any) 660'			11. SEC., T., R., M., OR BLK. AND SURVEY OR AREA Sec 15, T19S, R31E		
16. NO. OF ACRES IN LEASE 160			12. COUNTY OR PARISH Eddy		
17. NO. OF ACRES ASSIGNED TO THIS WELL 40			13. STATE N.M.		
18. DISTANCE FROM PROPOSED LOCATION* TO NEAREST WELL, DRILLING, COMPLETED, OR APPLIED FOR, ON THIS LEASE, FT. None			20. ROTARY OR CABLE TOOLS Rotary		
21. ELEVATIONS (Show whether DF, RT, GR, etc.) 3523' GR 3535' RT			22. APPROX. DATE WORK WILL START* Upon Approval		

PROPOSED CASING AND CEMENTING PROGRAM

SIZE OF HOLE	GRADE, SIZE OF CASING	WEIGHT PER FOOT	SETTING DEPTH	QUANTITY OF CEMENT
17-1/2	13-3/8 J55	54.5	500	500 sx - Circ
11	8-5/8 J55	24	2200	700 sx - Circ
7-7/8	5-1/2 J55	15.5 & 17	7000	1100 sx - TOC @ + 2000'

BOP - 3000 psi - Attached Schematic

Part FD-1  
12-11-92  
New Lee & API

EXP. INT.  
5-14-93

APPROVAL SUBJECT TO  
GENERAL REQUIREMENTS AND  
SPECIAL STIPULATIONS  
ATTACHED

IN ABOVE SPACE DESCRIBE PROPOSED PROGRAM: If proposal is to deepen, give data on present productive zone and proposed new productive zone. If proposal is to drill or deepen directionally, give pertinent data on subsurface locations and measured and true vertical depths. Give blowout preventer program, if any.

24. SIGNED Dorothy Neufeldt TITLE Regulatory Administrator DATE 11-3-92

(This space for Federal or State office use)

PERMIT NO. APPROVAL DATE

Application approval does not warrant or certify that the applicant holds legal or equitable title to those rights in the subject lease which would entitle the applicant to conduct operations thereon.  
CONDITIONS OF APPROVAL, IF ANY:

APPROVED BY TITLE DATE 12-3-92

Submit to Appropriate  
District Office  
State Lease - 4 copies  
Fee Lease - 3 copies

State of New Mexico  
Energy, Minerals and Natural Resources Department

Form C-102  
Revised 1-1-89

OIL CONSERVATION DIVISION

P.O. Box 2088  
Santa Fe, New Mexico 87504-2088

DISTRICT I

P.O. Box 1960, Hobbs, NM 88240

DISTRICT II

P.O. Drawer DD, Artesia, NM 88210

DISTRICT III

1000 Rio Brazos Rd., Artec, NM 87410

WELL LOCATION AND ACREAGE DEDICATION PLAT

All Distances must be from the outer boundaries of the section

Operator BTA OIL PRODUCERS			Lease 9209 JV-P LUSK "B"		Well No. 1
Unit Letter J	Section 15	Township 19 SOUTH	Range 31 EAST	County NMPM	EDDY
Actual Footage Location of Well: 1980 feet from the SOUTH line and 1980 feet from the EAST line					
Ground Level Elev. 3523.1	Producing Formation Delaware	Pool Lusk	Dedicated Acreage: 40 Acres		

1. Outline the acreage dedicated to the subject well by colored pencil or hachure marks on the plat below.

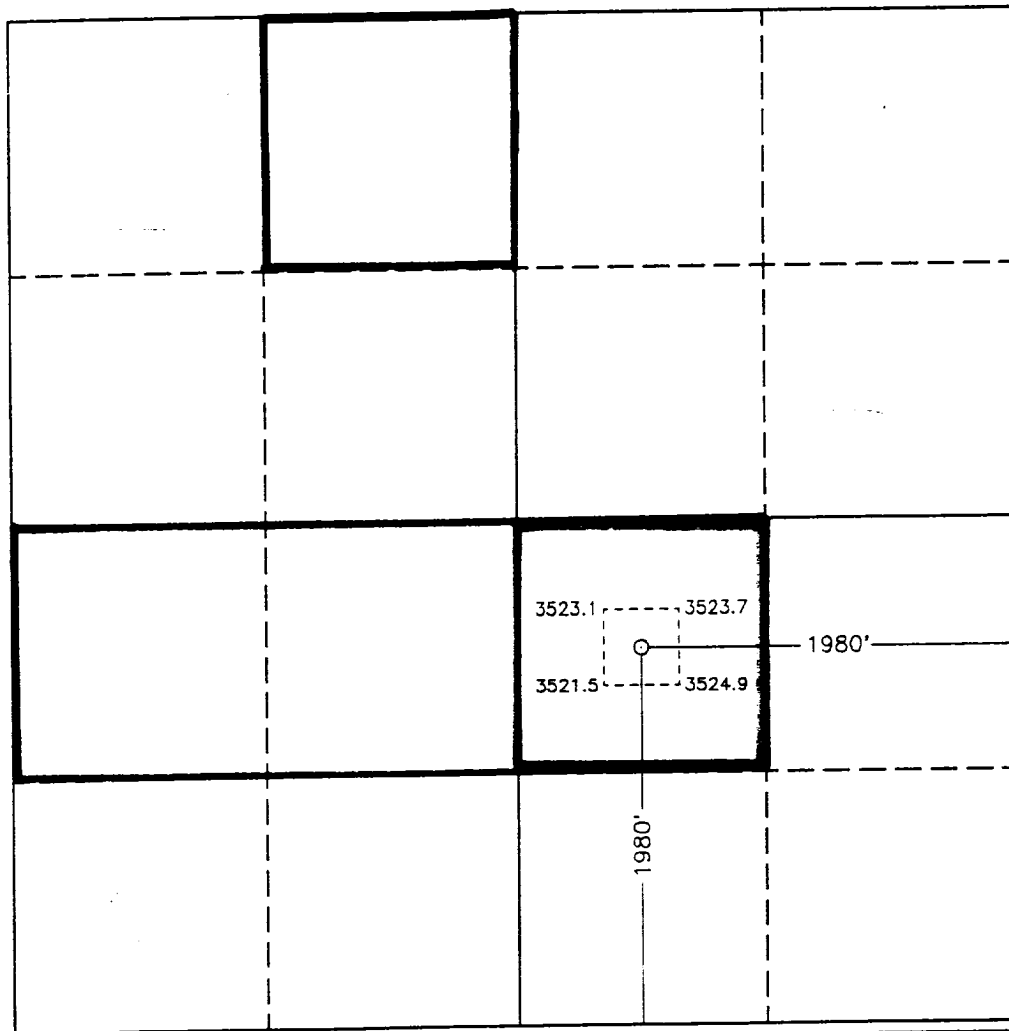
2. If more than one lease is dedicated to the well, outline each and identify the ownership thereof (both as to working interest and royalty).

3. If more than one lease of different ownership is dedicated to the well, have the interest of all owners been consolidated by communitization, unitization, force-pooling, etc.?

☐ Yes ☐ No If answer is "yes" type of consolidation \_\_\_\_\_

If answer is "no" list of owners and tract descriptions which have actually been consolidated. (Use reverse side of this form necessary.)

No allowable will be assigned to the well unit all interests have been consolidated (by communitization, unitization, forced-pooling, otherwise) or until a non-standard unit, eliminating such interest, has been approved by the Division.



OPERATOR CERTIFICATION

I hereby certify the the information contained herein is true and complete to the best of my knowledge and belief.

Signature

Printed Name  
Dorothy Houghton

Position

Regulatory Administrator  
Company

BTA Oil Producers

Date

11-3-92

SURVEYOR CERTIFICATION

I hereby certify that the well location shown on this plat was plotted from field notes of actual surveys made by me or under my supervision, and that the same is true and correct to the best of my knowledge and belief.

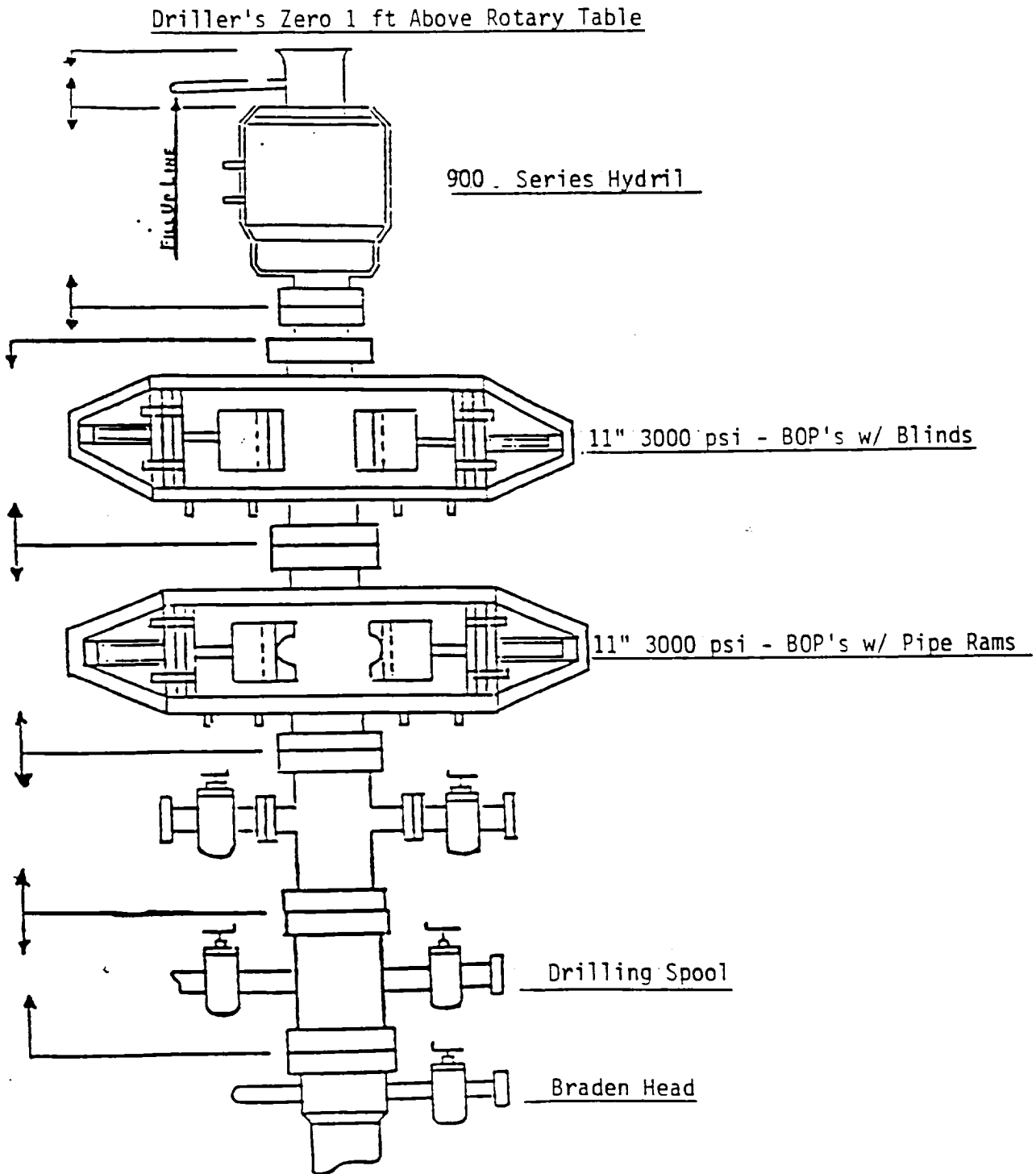
Date Surveyed

OCTOBER 28, 1992

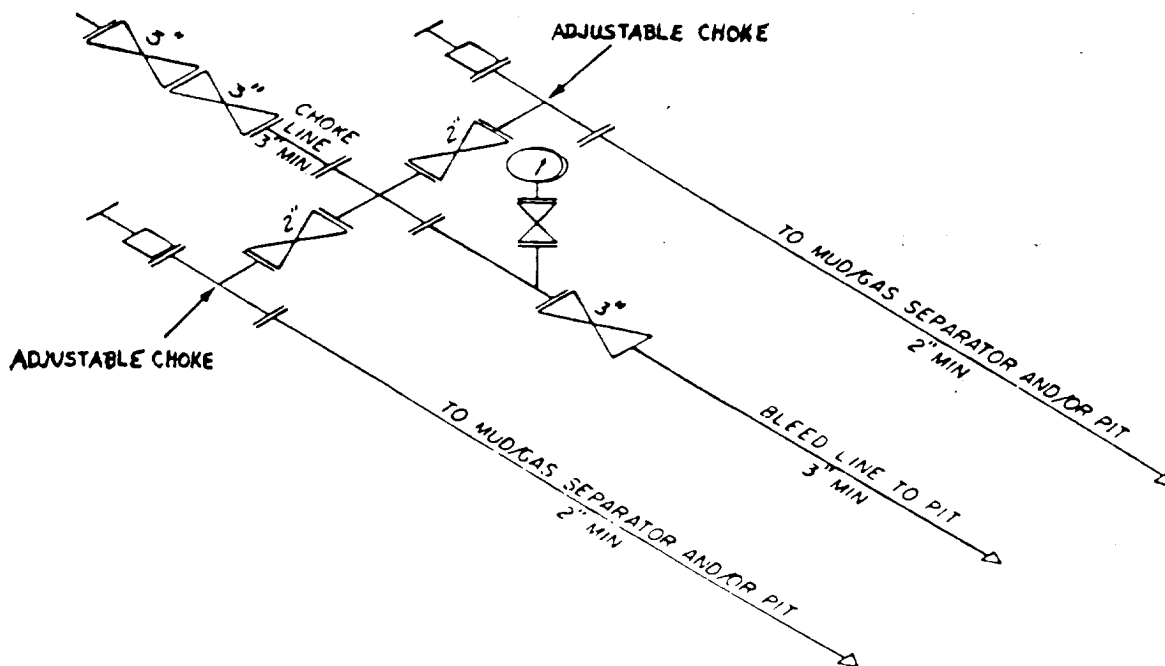
Signature & Seal of  
Professional Surveyor

Certificate No. JONES W. WEST, 878  
RONALD W. JONES, 8230  
GARY L. JONES, 7677  
92-11-1636

B T A O I L P R O D U C E R S



BTA Oil Producers  
9209 JV-P Lusk --B--  
Well #1  
1,980' FSL & 1,980' FEL  
Section 15, T-19-S, R-31-E  
Eddy County, New Mexico  
Lusk (Delaware) Field



3M CHOKE MANIFOLD EQUIPMENT — CONFIGURATION MAY VARY

BTA Oil Producers  
 9209 JV-P Lusk --B-  
 Well #1  
 1,980' FSL & 1,980' FEL  
 Section 15, T-19-S, R-31-E  
 Eddy County, New Mexico  
 Lusk (Delaware) Field

## DRILLING PROGRAM

BTA OIL PRODUCERS  
Lusk -B-, 9209 JV-P, Well No. 1  
1980' FSL and 1980' FEL  
Sec. 15, T-19-S, R-31-E  
Eddy County, New Mexico

In conjunction with Form 3160-3, Application for Permit to Drill, BTA Oil Producers submits the following 10 items for pertinent information in accordance with BLM requirements:

1. The geologic surface formation is Quaternary.
2. The estimated top of geologic marker are as follows:

Yates	2,405'
Delaware	4,400'
L. Brushy Canyon	6,575'
Bone Spring	6,875'

3. The estimated depth at which anticipated water, oil or gas formations are expected to be encountered:

Delaware	4,400'
Brushy Canyon	6,575'

All shows of fresh water and minerals will be reported and protected. A sample will be taken of any water flows and furnished to the BLM, Division of Minerals. All oil and gas shows will be adequately tested for commercial possibilities reported and protected.

4. Proposed Casing and Cementing program:

<u>Casing Size</u>	<u>Setting From</u>	<u>Depth to</u>	<u>Weight</u>	<u>Grade</u>	<u>Joint</u>
13-3/8"	0	500'	54.5#	J-55	STC
8-5/8"	0	2,200'	24.0#	J-55	STC
5-1/2"	0	5,000'	15.5#	J-55	LTC
5-1/2"	5,000'	7,000'	17.0#	J-55	LTC

13-3/8" casing will be cemented with 500 sx Class "C" cement containing 2% CaCl to circulate to surface.

8-5/8" casing will be cemented with sufficient light cement, tailed-in with 400 sx Class "C" cement, to circulate to surface.

5-1/2" casing will be cemented back up above the bottom of the 8-5/8" casing.

Note: All casing strings will be pressure tested to 0.22 psi/ft. of setting depth or 1500 psi (whichever is greater) after cementing and prior to drillout.

5. Pressure Control Equipment: See Attached Diagram

6. Mud Program:

Surface to 500': Fresh water spud with 35 to 45 sec/1000 cc viscosity. Will keep mud weight as low as possible using solids separation equipment and water. Will maintain fresh gel in system.

500' to 2,200': 10.0 ppg saturated brine water. Circulate to reserve pit. Will use lime for pH control in range 10 to 11. Will sweep hole with salt gel slugs as required for hole cleaning.

2,200' to 7,000': Fresh water. Will sweep hole with gel slugs as required for hole cleaning. Mud up with fresh water gel to run logs.

7. Auxiliary Equipment:

- a. Upper kelly cock valve with handle available
- b. Safety valves and subs to fit all drill string connections in use
- c. Monitoring of mud system will be visual

3. Testing, Logging and Coring Program:

Drill Stem Tests will be made when samples, drilling time and other data indicate a test is warranted.

It is planned that electric logs will include Gamma Ray-CNL, FDC logs and dual laterologs.

No coring is planned.

9. Anticipated Abnormal Pressure: None

10. Anticipated Starting Date: It is planned to commence drilling operations on or before December 1, 1992 to last a period of 60 days.

SURFACE USE PLAN

FOR

BTA OIL PRODUCERS  
LUSK -B-, 9209 JV-P, Well No. 1  
1980' FSL & 1980' FEL  
SEC. 15, T-19-S, R-31-E  
EDDY COUNTY, NEW MEXICO

LOCATED: 55 miles West from Hobbs

FEDERAL LEASE NUMBER: NM 89053

RECORD LESSEE: BTA Oil Producers

SURFACE OWNERSHIP: Federal

GRAZING LEASEE: Ellison Tom  
P. O. Box 1053  
Andrews, Texas 79714  
(915) 523-2374

POOL: Lusk, Delaware

POOL RULES: 40 NW/SE

EXHIBITS:

- A. Access Road
- B. Topographic Area Map
- C. Well Pad Detail
- D. County Map

## MULTI-POINT SURFACE USE & OPERATIONS PLAN

BTA Oil Producers

Lusk -B-, 9209 JV-P, Well No. 1  
1980' FSL & 1980' FEL  
Sec. 15, T19S, R31E  
Eddy County, New Mexico

This plan is submitted with Form 3160-3, Application for Permit to Drill, covering the referenced well. The plan describes the location of the proposed well, the proposed construction activities and operations plan, the magnitude of necessary surface disturbance, and the procedures to be followed in rehabilitating the surface after completion of the operation so that complete appraisal can be made concerning the environmental effects associated with the operations.

### 1. Existing Roads

- A. Exhibit -A- is a topographic map showing the location of the proposed well as staked with existing roads and conditions within the one mile area. The proposed location is approximately 55 miles west from Hobbs, New Mexico as shown on Exhibit -B-.
- B. From Hobbs, take Highway 62/180 west for 37 miles to Highway 243, turning right and go northwest 4.5 miles. Turn right on County Road 126 and go north 5.5 miles. Turn left and go west on county road 248 for 5 miles, then south on 222, then back east on BTA access road to the wellsite.

### 2. Access Road

- A. Our access road will be 975 feet east from the county road 222 as shown on Exhibit -A-.
- B. Caliche will be used for the access road; watered, compacted and graded.
- C. The access road will be crowned for drainage and maintained during drilling operations and, if productive, as long as producing.

### 3. Location of Existing Wells

- A. All existing wells within a one mile radius of our proposed well are shown on Exhibit -D-.

MULTI-POINT SURFACE USE AND OPERATION PLAN

Lusk -B-, 9209 JV-P, Well No. 1

Page 2

4. Location of Existing and/or Proposed Facilities if Well is Productive
  - A. If well is productive, we will use the well pad for all necessary production facilities.
  - B. Should the well be successfully completed for production, the BLM will be notified when the well is placed in producing status within five days.
  - C. All facilities will be painted a flat, non-reflective, earthtone color to match the standard environmental colors within six months of installation.
5. Location and Type of Water Supply
  - A. Water for drilling and completion operations will be purchased and trucked to the well site, or transported by a plastic temporary "fas-line" laid on the surface alongside existing roads.
6. Source of Construction Materials
  - A. Caliche used for construction of the drilling pad and access road will be obtained from the wellsite.
  - B. If there is not sufficient material available in that pit, it will be purchased from the area designated by the BLM.
7. Methods of Handling Waste Disposal
  - A. Drill cuttings will be disposed of in the reserve pits located on the north side of the rig.
  - B. Drilling fluids will be allowed to evaporate in the reserve pits until the pits are dry enough for backfilling.
  - C. Water produced during operations will be collected in tanks until hauled to an approved disposal system or a separate disposal application will be submitted to the BLM for appropriate approval.
  - D. Oil produced during test will be stored in test tanks until sold.
  - E. Current laws and regulations pertaining to the disposal of human waste will be complied with.
  - F. Trash, waste paper and garbage will be disposed of by hauling to an available disposal. All waste material will be contained in a totally enclosed trash basket with a fine wire mesh, to prevent wind scattering during collection. The road and pad will be kept litter free.

Lusk -B-, 9209 JV-P, Well No. 1

Page 3

8. Ancillary Facilities

- A. It is possible that a mobile home will be used at the well site during drilling operations.

9. Wellsite Layout

- A. Exhibit -C- shows the well pad detail.
- B. No cut and fill will be required at the well site, however, it will require clearing and levelling.
- C. The reserve pits will be fenced.

10. Plans for Restoration of Surface

- A. Following drilling and/or completion operations, all equipment and material not needed for further operations will be removed. The location will be cleaned of all trash and junk to leave the well site as clean as possible.
- B. Any unguarded pits containing fluids will be fenced until they are filled. Oil in the mud pit will necessitate either removal or installation of overhead flagging. The pit will be allowed to dry prior to the commencement of backfilling operations. Fill material will be pushed back into the cuts and up over the backslope, recontouring the area so that there are no large depressions that will trap water or form ponds. Topsoil will be evenly distributed over the entire location. The seedbed will be prepared by disking to a depth of four to six inches following the contour.
- C. If the proposed well is non-productive, all rehabilitation and/or vegetation requirements of the BLM will be complied with and will be accomplished as expeditiously as possible.
- D. All disturbed areas will be seeded on the contour at a depth of one-half inch using the seed mixture required by the BLM.
- E. Seeding will be completed after September 15 and prior to November 15th before freeze up or as early as possible the following spring to take advantage of available ground moisture.
- F. Newly constructed access road will be recontoured, disked, and seeded as specified above. All rehabilitation work, including seeding, will be completed as specified by the BLM, or sooner if conditions permit.

MULTI-POINT SURFACE    2 AND OPERATION PLAN

Lusk -B-, 9209 JV-P, Well No. 1

Page 4

11. Surface Topography

- A. The surface ownership is Federal. The grazing leasee is Ellison Tom.
- B. The wellsite and access route are located just southwest of the Querecho Plains as shown on Exhibit 'A', Topographic map of area. The area is flat sandy pasture land.
- C. There are no houses or building within one mile of drillsite.
- D. Signs identifying and locating our well will be maintained at the drillsite and principle entrance, commencing with the spudding of the well.
- E. An Archaeological Survey is being prepared and will be mailed directly to the Carlsbad office.

12. Operator's Representative

- A. The field representatives that is responsible for assuring compliance with the approved surface use plan is:

Drilling Superintendent:

Mr. L. G. Johnson

Phone: 915/682-3753 (Office)

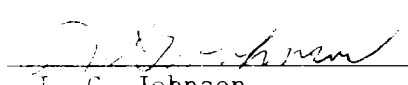
915/682-5149 (Home)

915/683-4090 (Mobile)

13. Certification:

I hereby certify that I, or persons under my direct supervision, have inspected the proposed drill site and access route; that I am familiar with the conditions which presently exist; that the statements made in this plan are, to the best of my knowledge, true and correct; and that the work associated with the operations proposed herein will be performed by BTA Oil Producers and its contractors and sub-contractors in conformity with this plan and the terms and conditions under which it is approved. This statement is subject to the provisions of 18 U.S.C. 1001 for the filing of a false statement.

Dated this 5th day of November, 1992.

  
\_\_\_\_\_  
L. G. Johnson

Drilling Superintendent

For BTA Oil Producers



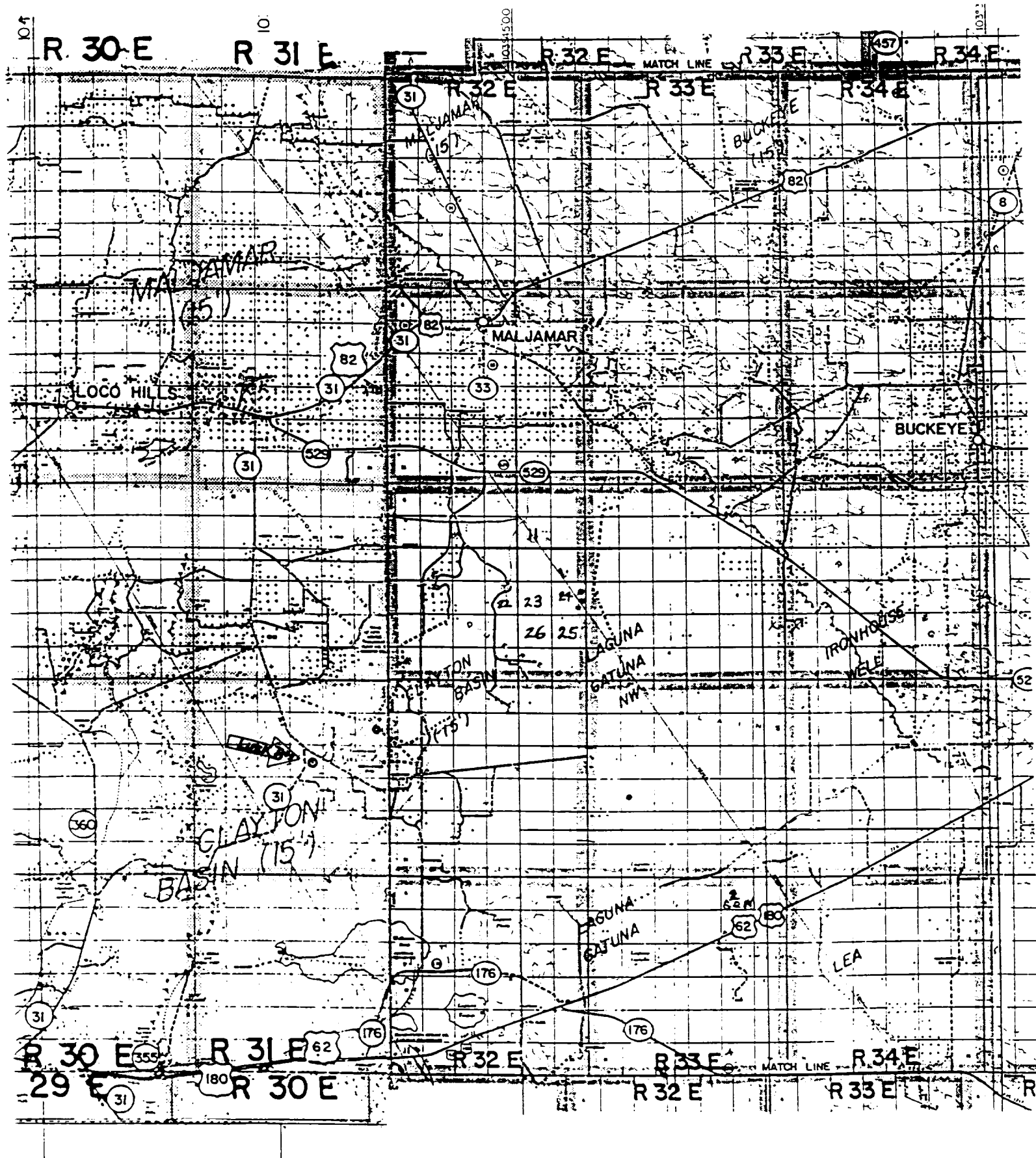


EXHIBIT -B-  
 BTA Oil Producers  
 9209 JV-P Lusk --B-  
 Well #1  
 1,980' FSL & 1,980' FEL  
 Section 15, T-19-S, R-31-E  
 Eddy County, New Mexico  
 Lusk (Delaware) Field

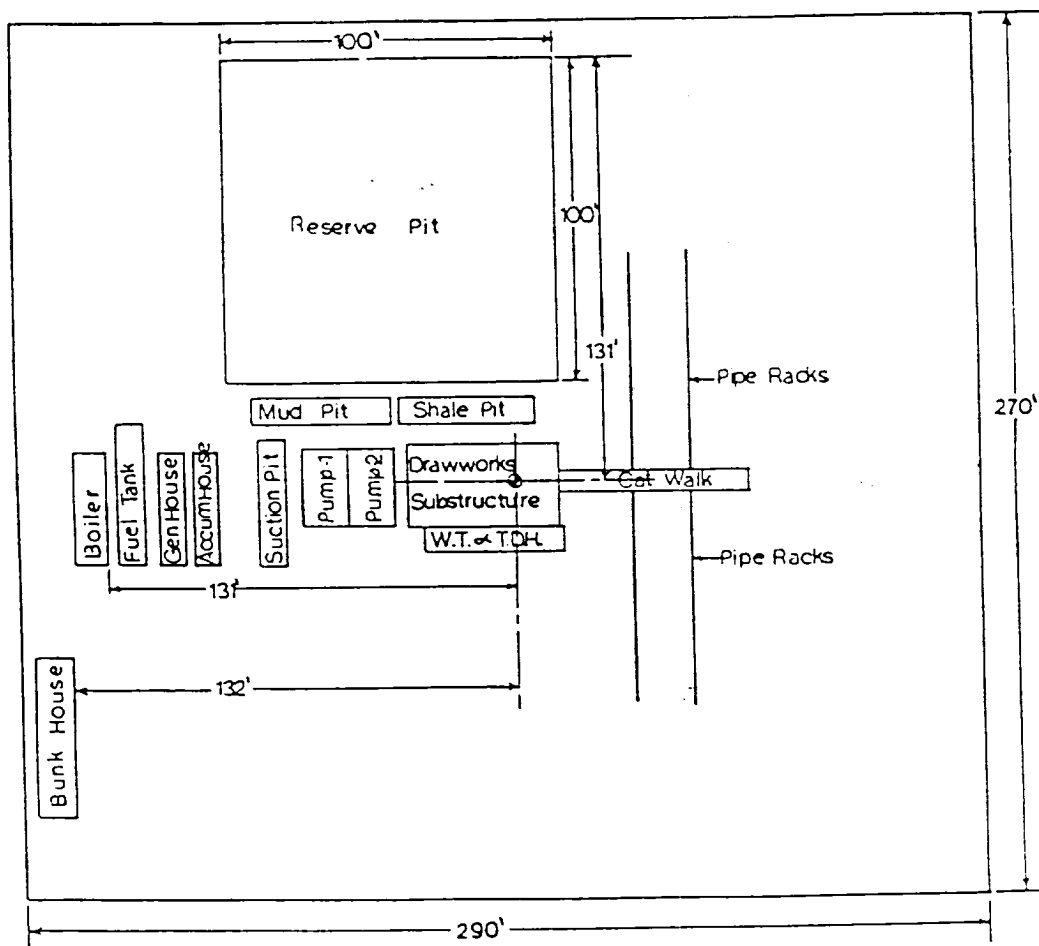


EXHIBIT -C-

BTA Oil Producers  
9209 JV-P Lusk --B-

Well #1

1,980' FSL & 1,980' FEL  
Section 15, T-19-S, R-31-E  
Eddy County, New Mexico  
Lusk (Delaware) Field

