

Submit to Appropriate
District Office
State Lease - 6 copies
Fee Lease - 5 copies

State of New Mexico
Energy, Minerals and Natural Resources Department

Form C-101
Revised 1-1-89

OIL CONSERVATION DIVISION

P.O. Box 2088
Santa Fe, New Mexico 87504-2088

DISTRICT I
P.O. Box 1980, Hobbs, NM 88240

DISTRICT II
P.O. Drawer DD, Artesia, NM 88210

DISTRICT III
1000 Rio Brazos Rd., Aztec, NM 87410

API NO. (assigned by OCD on New Wells)

5. Indicate Type of Lease

STATE ☒

FEE ☐

6. State Oil & Gas Lease No.

648

APPLICATION FOR PERMIT TO DRILL, DEEPEN, OR PLUG BACK

1a. Type of Work:

DRILL ☒

RE-ENTER ☐

DEEPEN ☐

PLUG BACK ☐

b. Type of Well:

OIL
WELL ☒

GAS
WELL ☐

OTHER ☐

SINGLE
ZONE ☐

MULTIPLE
ZONE ☒

7. Lease Name or Unit Agreement Name

East Millman

8. Well No.

200

9. Pool name or Wildcat

E. Millman Q-G-SA

2. Name of Operator

SDX RESOURCES, INC.

3. Address of Operator

P.O. BOX 5061 Midland, TX. 79704-5061

4. Well Location

Unit Letter C

: 1330

Feet From The West

Line and 1261

Feet From The North

Line

Section 14

Township 19-S

Range 28-E

NMPM Eddy

County

10. Proposed Depth

2600

11. Formation

Grayburg

12. Rotary or C.T.

Rot

13. Elevations (Show whether DF, RT, GR, etc.)
3432 GR

14. Kind & Status Plug. Bond
Blanket

15. Drilling Contractor
Capstar

16. Approx. Date Work will start
Feb. 01

17. PROPOSED CASING AND CEMENT PROGRAM

SIZE OF HOLE	SIZE OF CASING	WEIGHT PER FOOT	SETTING DEPTH	SACKS OF CEMENT	EST. TOP
12-1/4"	8-5/8"	24#	350' +	300	surf
7-7/8"	5-1/2"	15.50#	2600'	500	surf

Plan to drill a 12-1/4" hole to approx. 350'; set 8-5/8" surface casing. Circulate "C" cement. Drill 7-7/8" hole to TD. Run open hole logs (LDT-CNL-GR & DLL). Run 5-1/2" casing and circulate 50/50 POZ "C" cement. Perforate the Grayburg-Queen and stimulate as necessary for optimum production.

Mud Program: Fresh water mud 0'-350'
Salt water mud 350'-TD.

APPROVAL VALID FOR 30 DAYS
PERMIT EXPIRES 3-3-93
UNLESS DRILLING UNDERWAY

IN ABOVE SPACE DESCRIBE PROPOSED PROGRAM: IF PROPOSAL IS TO DEEPEN OR PLUG BACK, GIVE DATA ON PRESENT PRODUCTIVE ZONE AND PROPOSED NEW PRODUCTIVE ZONE. GIVE BLOWOUT PREVENTER PROGRAM, IF ANY.

I hereby certify that the information above is true and complete to the best of my knowledge and belief.

SIGNATURE

Chuck Morgan

TITLE

Engr

DATE

1/29/93

TYPE OR PRINT NAME

Chuck Morgan

TELEPHONE NO. 748-9911

(This space for State Use)

APPROVED BY

Mark Bailey

TITLE

Geologist

DATE

2-3-93

CONDITIONS OF APPROVAL IF ANY:

Submit to Appropriate
District Office
State Lease - 4 copies
Fee Lease - 3 copies

State of New Mexico
Energy, Minerals and Natural Resources Department

Form C-102
Revised 1-1-89

OIL CONSERVATION DIVISION

DISTRICT I
P.O. Box 1980, Hobbs, NM 88240

P.O. Box 2088
Santa Fe, New Mexico 87504-2088

DISTRICT II
P.O. Drawer DD, Artesia, NM 88210

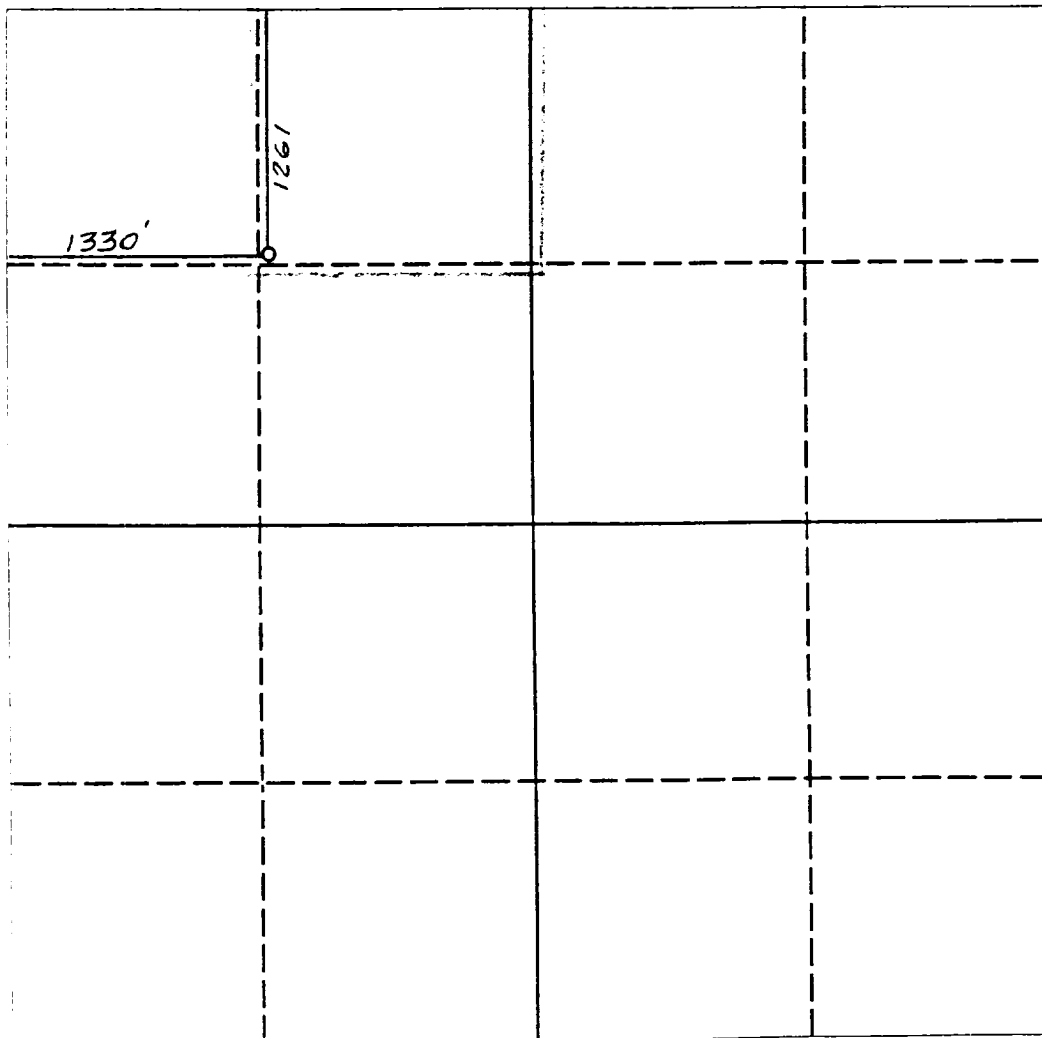
DISTRICT III
1000 Rio Brazos Rd., Aztec, NM 87410

WELL LOCATION AND ACREAGE DEDICATION PLAT

All Distances must be from the outer boundaries of the section

Operator SDX RESOURCES, INC.			Lease EAST MILLMAN UNIT		Well No. 200
Unit Letter C	Section 14	Township 19 SOUTH	Range 28 EAST	County EDDY COUNTY, NM	
Actual Footage Location of Well: 1261 feet from the NORTH line and 1330 feet from the WEST line					
Ground level Elev. 3432.	Producing Formation Q-Gb		Pool East Millman Q-G-SA	Dedicated Acreage: 40 Acres	

- Outline the acreage dedicated to the subject well by colored pencil or hatchure marks on the plat below.
- If more than one lease is dedicated to the well, outline each and identify the ownership thereof (both as to working interest and royalty).
- If more than one lease of different ownership is dedicated to the well, have the interest of all owners been consolidated by communitization, unitization, force-pooling, etc.?
☐ Yes ☐ No If answer is "yes" type of consolidation _____
If answer is "no" list the owners and tract descriptions which have actually been consolidated. (Use reverse side of this form if necessary).
No allowable will be assigned to the well until all interests have been consolidated (by communitization, unitization, forced-pooling, or otherwise) or until a non-standard unit, eliminating such interest, has been approved by the Division.



OPERATOR CERTIFICATION

I hereby certify that the information contained herein is true and complete to the best of my knowledge and belief.

Signature *Chuck Morgan*

Printed Name *Chuck Morgan*

Position *Engl.*

Company *SDX Resources, Inc.*

Date *1/29/93*

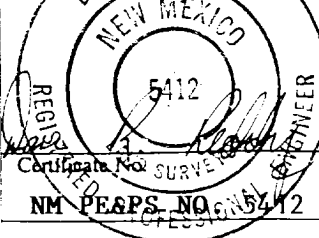
SURVEYOR CERTIFICATION

I hereby certify that the well location shown on this plat was plotted from field notes of actual surveys made by me or under my supervision, and that the same is true and correct to the best of my knowledge and belief.

Date Surveyed

JANUARY 28, 1993

Signature *ASB*
Professional Surveyor



0 330 660 990 1320 1650 1980 2310 2640 2000 1500 1000 500 0

